



1           **Section 1.** The City Manager is hereby authorized to enter into a Memorandum of Agreement with  
2 Pulaski County, Arkansas, regarding the development and construction of Phases 2 and 3 of the Southeast  
3 Trail, extending from its current end at East 6<sup>th</sup> Street to the Clinton National Airport Terminal.

4           **Section 2.** The Memorandum of Agreement shall provide that Pulaski County, Arkansas, will bear  
5 all costs associated with the development and construction of Phases 2 and 3 of the Southeast Trail.

6           **Section 3.** Pulaski County, Arkansas, shall retain ownership of the trail upon completion of  
7 construction until the expiration of the construction maintenance bond for that portion of the trail.

8           **Section 4.** Upon expiration of the maintenance bond, Pulaski County, Arkansas, shall transfer  
9 ownership of the trail to the City of Little Rock, which shall thereafter be responsible for the long-term  
10 maintenance of the trail.

11           **Section 5.** Funding for the construction of Phases 2 and 3 of the Southeast Trail shall be provided  
12 entirely by Pulaski County, Arkansas, and this Resolution has no fiscal impact on the City of Little Rock  
13 for the construction of these phases.

14           **Section 6. Severability.** In the event any title, section, paragraph, item, sentence, clause, phrase,  
15 or word of this resolution is declared or adjudged to be invalid or unconstitutional, such declaration or  
16 adjudication shall not affect the remaining portions of the resolution which shall remain in full force and  
17 effect as if the portion so declared or adjudged invalid or unconstitutional was not originally a part of the  
18 resolution.

19           **Section 7. Repealer.** All laws, ordinances, resolutions, or parts of the same, that are inconsistent  
20 with the provisions of this resolution, are hereby repealed to the extent of such inconsistency.

21 **ADOPTED: July 7, 2026**

22 **ATTEST:**

**APPROVED:**

23  
24 \_\_\_\_\_  
25 **Allison Segars, City Clerk**

23  
24 \_\_\_\_\_  
25 **Frank Scott, Jr., Mayor**

26 **APPROVED AS TO FORM:**

27  
28  
29 \_\_\_\_\_  
30 **Thomas M. Carpenter, City Attorney**

31 //

32 //

33 //



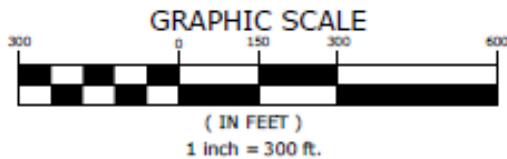
PERMANENT CONSTRUCTION EASEMENT #1

A TRACT OF LAND BEING A PART OF SECTION 6, TOWNSHIP 1 NORTH, RANGE 11 WEST, AND ALSO BEING PART OF THE BAPTISTE IMBEAU SPANISH LAND GRANT, ALL IN PULASKI COUNTY, ARKANSAS, AND BEING MORE PARTICULARLY DESCRIBED AS FOLLOWS:

COMMENCING AT THE SOUTHEAST CORNER OF SAID SECTION 6, THENCE ALONG THE SOUTH LINE THEREOF N88°38'36"W 416.10' TO A POINT; THENCE LEAVING SAID SOUTH LINE N10°04'26"E 30.30' TO A POINT ON THE SOUTH LINE OF A TRACT OF LAND BEING PARCEL# 24L0020000200 PULASKI COUNTY RECORDS, THENCE ALONG SAID SOUTH LINE N88°19'34"W 225.90' TO THE EAST LINE OF INDUSTRIAL PARK ADDITION TO THE CITY OF LITTLE ROCK, THENCE ALONG SAID EAST LINE N08°07'09"E 1124.86' TO A POINT; THENCE CONTINUE ALONG SAID EAST LINE N08°07'09"E 5.83' TO THE POINT OF BEGINNING; THENCE CONTINUE ALONG SAID EAST LINE N08°07'09"E 62.35' TO A POINT; THENCE LEAVING SAID EAST LINE N55°54'43"E 102.60' TO A POINT; THENCE N85°49'26"E 424.96' TO A POINT; THENCE N71°00'40"E 127.52' TO A POINT; THENCE N47°16'55"E 182.86' TO A POINT ON THE NORTH LINE OF THE SAID TRACT; THENCE ALONG SAID NORTH LINE S64°14'27"E 51.82' TO A POINT; THENCE LEAVING SAID NORTH LINE S43°45'59"W 157.95' TO A POINT; THENCE ALONG A CURVE TO THE RIGHT A DISTANCE OF 205.08' WITH A RADIUS OF 281.35' AND A CHORD BEARING A DISTANCE OF S68°20'49"W 200.57'; THENCE S86°25'02"W 313.56' TO A POINT; THENCE S81°19'27"W 44.94' TO A POINT; THENCE S74°58'09"W 45.14' TO A POINT; THENCE S66°23'43"W 80.22' TO A POINT; THENCE S54°32'51"W 60.20' TO THE POINT OF BEGINNING CONTAINING 0.98 ACRES (42,881.00 SQUARE FEET), MORE OR LESS.

P.C.E.#1		
Line Table		
Line #	Direction	Length
L1	N88°38'36"W	416.10'
L2	N10°04'26"E	30.30'
L3	N88°19'34"W	225.90'
L4	N8°07'09"E	1124.86'
L5	N8°07'09"E	5.83'
L6	N8°07'09"E	62.35'
L7	N55°54'43"E	102.60'
L8	N85°49'26"E	424.96'
L9	N71°00'40"E	127.52'
L10	N47°16'55"E	182.86'
L11	S64°14'27"E	51.82'
L12	S43°45'59"W	157.95'
L13	S86°25'02"W	313.56'
L14	S81°19'27"W	44.94'
L15	S74°58'09"W	45.14'
L16	S66°23'43"W	80.22'
L17	S54°32'51"W	60.20'

P.C.E.#1				
Curve Table				
Curve #	Chord Direction	Chord Length	Length	Radius
C1	S68°20'49"W	200.57'	205.08'	281.35'



		PERMANENT CONSTRUCTION EASEMENT & TEMPORARY CONSTRUCTION EASEMENT		
		LITTLE ROCK MUNICIPAL AIRPORT COMMISSION LITTLE ROCK, AR		
1380 N. Osborn Street Fayetteville, AR 72701 Phone: 479-781-2277	2100 Harris Road Little Rock, AR 72204 Phone: 479-771-2200	1120 W. 80th Ave., Suite 101 Fort Smith, AR 72903 Phone: 479-644-3333	APPROVED BY: [Signature] DATE: 5/1/2020 SCALE: 1" = 300' JOB NO.: 20-0776	SHEET NO.: 2 OF 4
<a href="http://www.mce.us.com">http://www.mce.us.com</a>				

**PERMANENT CONSTRUCTION EASEMENT #2**

A TRACT OF LAND BEING A PART OF THE BAPTISTE IMBEAU SPANISH LAND GRANT, PULASKI COUNTY, ARKANSAS, AND BEING MORE PARTICULARLY DESCRIBED AS FOLLOWS:

COMMENCING AT THE SOUTHWEST CORNER OF SAID LAND GRANT, THENCE ALONG THE SOUTH LINE THEREOF S88°27'03"E 69.64' TO A POINT ON THE SOUTH LINE OF A TRACT OF LAND BEING PARCEL# 24L0020000200 PULASKI COUNTY RECORDS, THENCE ALONG SAID SOUTH LINE S83°33'17"E 778.27' TO THE POINT OF BEGINNING; THENCE LEAVING SAID SOUTH LINE ALONG A CURVE TO THE RIGHT A DISTANCE OF 92.54' WITH A RADIUS OF 352.64' AND A CHORD BEARING AND DISTANCE OF N25°57'03"E 92.28'; THENCE CONTINUING ALONG A CURVE TO THE RIGHT A DISTANCE OF 64.16' WITH A RADIUS OF 526.35' AND A CHORD BEARING AND DISTANCE OF N39°26'13"E 64.12' TO A POINT ON THE EAST LINE OF THE SAID TRACT; THENCE S01°06'06"W 138.26' TO THE SOUTHEAST CORNER OF SAID TRACT; THENCE N85°49'19"W 78.66' ALONG THE SOUTH LINE OF SAID TRACT TO THE POINT OF BEGINNING CONTAINING 0.15 ACRES (6,348.47 SQUARE FEET), MORE OR LESS.

P.C.E.#2				
Curve Table				
Curve #	Chord Direction	Chord Length	Length	Radius
C4	N25°57'03"E	92.28'	92.54'	352.64'
C5	N39°26'13"E	64.12'	64.16'	526.35'

P.C.E.#2		
Line Table		
Line #	Direction	Length
L29	S88°27'03"E	69.64'
L30	S83°33'17"E	778.27'
L31	S1°06'06"W	138.26'
L32	N85°49'19"W	78.66'

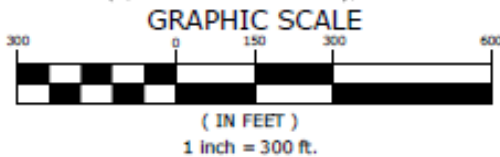
T.C.E.#1				
Curve Table				
Curve #	Chord Direction	Chord Length	Length	Radius
C2	N78°47'19"E	101.97'	102.53'	281.35'
C3	S76°09'39"W	103.04'	103.48'	322.39'

T.C.E.#1		
Line Table		
Line #	Direction	Length
L1	N88°38'36"W	416.10'
L2	N10°04'26"E	30.30'
L3	N88°19'34"W	225.90'
L4	N8°07'09"E	1124.86'
L5	N8°07'09"E	5.83'
L17	N54°32'51"E	60.20'
L16	N66°23'43"E	80.22'
L15	N74°58'09"E	45.14'
L14	N81°19'27"E	44.94'
L13	N86°25'02"E	313.56'
L18	S86°23'03"W	313.55'
L19	S81°35'31"W	42.61'
L20	S75°02'31"W	47.48'
L21	S66°05'20"W	78.17'
L22	S55°09'59"W	63.25'

**TEMPORARY CONSTRUCTION EASEMENT #1**

A TRACT OF LAND BEING A PART OF SECTION 6, TOWNSHIP 1 NORTH, RANGE 11 WEST, AND ALSO BEING PART OF THE BAPTISTE IMBEAU SPANISH LAND GRANT, ALL IN PULASKI COUNTY, ARKANSAS, AND BEING MORE PARTICULARLY DESCRIBED AS FOLLOWS:

COMMENCING AT THE SOUTHEAST CORNER OF SAID SECTION 6, THENCE ALONG THE SOUTH LINE THEREOF N88°38'36"W 416.10' TO A POINT; THENCE LEAVING SAID SOUTH LINE N10°04'26"E 30.30' TO A POINT ON THE SOUTH LINE OF A TRACT OF LAND BEING PARCEL# 24L0020000200 PULASKI COUNTY RECORDS, THENCE ALONG SAID SOUTH LINE N88°19'34"W 225.90' TO THE EAST LINE OF INDUSTRIAL PARK ADDITION TO THE CITY OF LITTLE ROCK, THENCE ALONG SAID EAST LINE N08°07'09"E 1124.86' TO THE POINT OF BEGINNING; THENCE CONTINUE ALONG SAID EAST LINE N08°07'09"E 5.83' TO A POINT; THENCE LEAVING SAID EAST LINE N54°32'51"E 60.20' TO A POINT; THENCE N66°23'43"E 80.22' TO A POINT; THENCE N74°58'09"E 45.14' TO A POINT; THENCE N81°19'27"E 44.94' TO A POINT; THENCE N86°25'02"E 313.56' TO A POINT; THENCE ALONG A CURVE TO THE LEFT A DISTANCE OF 102.53' WITH A RADIUS OF 281.35' AND A CHORD BEARING A DISTANCE OF N78°47'19"E 101.97'; THENCE ALONG A CURVE TO THE RIGHT A DISTANCE OF 103.48' WITH A RADIUS OF 322.39' AND A CHORD BEARING AND DISTANCE OF S76°09'39"W 103.04'; THENCE S86°23'03"W 313.55' TO A POINT; THENCE S81°35'31"W 42.61' TO A POINT; THENCE S75°02'31"W 47.48' TO A POINT; THENCE S66°05'20"W 78.17' TO A POINT; THENCE S55°09'59"W 63.25' TO THE POINT OF BEGINNING CONTAINING 0.06 ACRES (2,843.59 SQUARE FEET), MORE OR LESS.



	PERMANENT CONSTRUCTION EASEMENT & TEMPORARY CONSTRUCTION EASEMENT LITTLE ROCK MUNICIPAL AIRPORT COMMISSION LITTLE ROCK, AR		
	APPROVED BY: [Signature] SCALE: 1" = 300' DATE: 5/1/2028	DRAWN BY: [Signature] JOB NO.: 20-0778 REV:	SHEET NO.: 3 TOTAL SHEETS: 4
http://www.mce.us.com			

TEMPORARY CONSTRUCTION EASEMENT #2

A TRACT OF LAND BEING A PART OF SECTION 6, TOWNSHIP 1 NORTH, RANGE 11 WEST, AND ALSO BEING PART OF THE BAPTISTE IMBEAU SPANISH LAND GRANT, ALL IN PULASKI COUNTY, ARKANSAS, AND BEING MORE PARTICULARLY DESCRIBED AS FOLLOWS:

COMMENCING AT THE SOUTHEAST CORNER OF SAID SECTION 6, THENCE ALONG THE SOUTH LINE THEREOF N88°38'36"W 416.10' TO A POINT; THENCE LEAVING SAID SOUTH LINE N10°04'26"E 30.30' TO A POINT ON THE SOUTH LINE OF A TRACT OF LAND BEING PARCEL # 24L0020000200 PULASKI COUNTY RECORDS, THENCE ALONG SAID SOUTH LINE N88°19'34"W 225.90' TO THE EAST LINE OF INDUSTRIAL PARK ADDITION TO THE CITY OF LITTLE ROCK, THENCE ALONG SAID EAST LINE N08°07'09"E 1124.86' TO A POINT, THENCE CONTINUE ALONG SAID EAST LINE N08°07'09"E 5.83' TO A POINT, THENCE CONTINUE ALONG SAID EAST LINE N08°07'09"E 62.35' TO THE POINT OF BEGINNING; THENCE CONTINUE ALONG SAID EAST LINE N08°07'09"E 6.94'; THENCE LEAVING SAID EAST LINE N56°28'57"E 100.74' TO A POINT; THENCE N85°49'24"E 424.30' TO A POINT; THENCE N70°57'58"E 126.55' TO A POINT; THENCE N47°14'05"E 179.16' TO A POINT ON THE NORTH LINE OF THE SAID TRACT; THENCE ALONG SAID NORTH LINE S62°08'25"E 5.00' TO A POINT; THENCE LEAVING SAID NORTH LINE S47°16'55"W 182.86' TO A POINT; THENCE S71°00'40"W 127.52' TO A POINT; THENCE S85°49'26"W 424.96' TO A POINT; THENCE S55°54'43"W 102.60' TO THE POINT OF BEGINNING CONTAINING 0.09 ACRES (4,061.48 SQUARE FEET), MORE OR LESS.

T.C.E.#2		
Line Table		
Line #	Direction	Length
L1	N88°38'36"W	416.10'
L2	N10°04'26"E	30.30'
L3	N88°19'34"W	225.90'
L4	N8°07'09"E	1124.86'
L5	N8°07'09"E	5.83'
L6	N8°07'09"E	62.35'
L23	N8°07'09"E	6.94'
L24	N56°28'57"E	100.74'
L25	N85°49'24"E	424.30'
L26	N70°57'58"E	126.55'
L27	N47°14'05"E	179.16'
L28	S62°08'25"E	5.00'
L10	S47°16'55"W	182.86'
L9	S71°00'40"W	127.52'
L8	S85°49'26"W	424.96'
L7	S55°54'43"W	102.60'

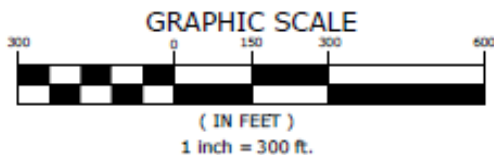
TEMPORARY CONSTRUCTION EASEMENT #3

A TRACT OF LAND BEING A PART OF THE BAPTISTE IMBEAU SPANISH LAND GRANT, PULASKI COUNTY, ARKANSAS, AND BEING MORE PARTICULARLY DESCRIBED AS FOLLOWS:

COMMENCING AT THE SOUTHWEST CORNER OF SAID LAND GRANT, THENCE ALONG THE WEST LINE THEREOF N02°18'55"E 1267.37' TO A POINT, THENCE LEAVING SAID WEST LINE ALONG A CURVE TO THE LEFT A DISTANCE OF 201.37' WITH A RADIUS OF 323.12' AND A CHORD BEARING AND DISTANCE OF N66°40'51"E 198.13' TO THE POINT OF BEGINNING; THENCE N43°45'59"E 157.95' TO A POINT ON THE EAST LINE OF A TRACT OF LAND BEING PARCEL # 24L0020000200 PULASKI COUNTY RECORDS, THENCE ALONG SAID EAST LINE S64°14'27"E 5.31' TO A POINT; THENCE LEAVING SAID EAST LINE S45°34'49"W 159.68' TO THE POINT OF BEGINNING CONTAINING 0.01 ACRES (399.20 SQUARE FEET), MORE OR LESS.

T.C.E.#3		
Line Table		
Line #	Direction	Length
L33	N2°18'55"E	1267.37'
L12	N43°45'59"E	157.95'
L34	S64°14'27"E	5.31'
L35	S45°34'49"W	159.68'

T.C.E.#3				
Curve Table				
Curve #	Chord Direction	Chord Length	Length	Radius
C6	N66°40'51"E	198.13'	201.37'	323.12'



	PERMANENT CONSTRUCTION EASEMENT & TEMPORARY CONSTRUCTION EASEMENT LITTLE ROCK MUNICIPAL AIRPORT COMMISSION LITTLE ROCK, AR		
	APPROVED BY: DATE: 5/1/2008	DRAWN BY: DATE: 5/1/2008	CHECKED BY: DATE: 5/1/2008
SCALE: 1" = 300'		JOB NO.: 20-5726	
http://www.mce.us.com			



**PERMANENT CONSTRUCTION EASEMENT**

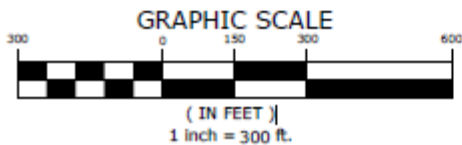
A TRACT OF LAND BEING PART OF THE BAPTISTE IMBEAU SPANISH LAND GRANT, PULASKI COUNTY, ARKANSAS, AND BEING MORE PARTICULARLY DESCRIBED AS FOLLOWS:

COMMENCING AT THE SOUTHWEST CORNER OF SAID LAND GRANT, THENCE ALONG THE WEST LINE THEREOF N02°18'55"E 2344.48' TO A POINT; THENCE LEAVING SAID WEST LINE S71°33'58"E 45.82' TO A POINT, THENCE N14°17'58"E 143.76 TO THE SOUTHWEST CORNER OF A TRACT OF LAND BEING PARCEL# 24L0010000400 PULASKI COUNTY RECORDS, THENCE ALONG THE SOUTH LINE OF SAID TRACT S64°14'27"E 171.26' TO A POINT, THENCE CONTINUE ALONG SAID SOUTH LINE S64°14'27"E 5.07' TO THE POINT OF BEGINNING; THENCE LEAVING SAID SOUTH LINE N48°26'57"E 211.27' TO A POINT; THENCE N58°42'13"E 128.88' TO A POINT; THENCE N82°30'17"E 158.82' TO A POINT; THENCE S81°23'47"E 112.70' TO A POINT; THENCE S63°38'31"E 60.39' TO A POINT; THENCE S53°10'46"E 56.19' TO A POINT; THENCE S44°24'49"E 94.66' TO A POINT; THENCE S46°57'38"E 78.50' TO A POINT; THENCE S43°22'21"E 56.48' TO A POINT; THENCE S32°27'15"E 60.86' TO A POINT; THENCE S41°58'09"E 102.11' TO A POINT; THENCE S43°23'13"E 174.75' TO A POINT; THENCE S44°49'06"E 192.59' TO A POINT; THENCE S60°08'59"E 59.41' TO A POINT; THENCE S48°58'53"E 39.09' TO A POINT; THENCE S33°58'51"E 40.97' TO A POINT; THENCE S16°23'23"E 145.10' TO A POINT; THENCE S15°10'59"E 37.09' TO A POINT; THENCE S04°37'25"W 56.12' TO A POINT; THENCE S41°03'32"W 24.82' TO A POINT; THENCE S07°01'21"W 80.51' TO A POINT ON THE SOUTH LINE OF SAID TRACT; THENCE ALONG SAID SOUTH LINE N54°46'56"W 42.89' TO A POINT; THENCE LEAVING SAID SOUTH LINE N10°10'03"E 83.94' TO A POINT; THENCE N01°00'48"W 72.03' TO A POINT; THENCE N13°57'30"W 81.07' TO A POINT; THENCE N25°22'13"W 60.56' TO A POINT; THENCE N36°40'39"W 63.40' TO A POINT; THENCE N44°26'14"W 152.27' TO A POINT; THENCE N46°45'33"W 131.60' TO A POINT; THENCE N43°47'06"W 128.86' TO A POINT; THENCE N40°07'58"W 53.07' TO A POINT; THENCE N40°03'02"W 171.89' TO A POINT; THENCE N44°56'46"W 159.69' TO A POINT; THENCE N53°03'58"W 76.89' TO A POINT; THENCE N67°28'43"W 64.60' TO A POINT; THENCE N80°48'00"W 66.24' TO A POINT; THENCE S86°37'00"W 57.37' TO A POINT; THENCE S80°12'01"W 60.92' TO A POINT; THENCE S69°11'40"W 76.56' TO A POINT; THENCE S55°16'42"W 60.07' TO A POINT; THENCE S45°47'43"W 48.20' TO A POINT; THENCE S46°07'33"W 165.28' TO A POINT; THENCE N64°14'27"W 51.82' TO THE POINT OF BEGINNING CONTAINING 1.47 ACRES (64,189.91 SQUARE FEET), MORE OR LESS.

**TEMPORARY CONSTRUCTION EASEMENT #1**

A TRACT OF LAND BEING PART OF THE BAPTISTE IMBEAU SPANISH LAND GRANT, PULASKI COUNTY, ARKANSAS, AND BEING MORE PARTICULARLY DESCRIBED AS FOLLOWS:

COMMENCING AT THE SOUTHWEST CORNER OF SAID LAND GRANT, THENCE ALONG THE WEST LINE THEREOF N02°18'55"E 2344.48' TO A POINT; THENCE LEAVING SAID WEST LINE S71°33'58"E 45.82' TO A POINT, THENCE N14°17'58"E 143.76 TO THE SOUTHWEST CORNER OF A TRACT OF LAND BEING PARCEL# 24L0010000400 PULASKI COUNTY RECORDS, THENCE ALONG THE SOUTH LINE OF SAID TRACT S64°14'27"E 171.26' TO THE POINT OF BEGINNING; THENCE LEAVING SAID SOUTH LINE N48°29'25"E 215.36' TO A POINT; THENCE N58°37'45"E 127.72' TO A POINT; THENCE N82°23'08"E 161.38' TO A POINT; THENCE S81°24'11"E 112.79' TO A POINT; THENCE S64°02'56"E 61.90' TO A POINT; THENCE S53°20'55"E 56.89' TO A POINT; THENCE S44°32'25"E 96.81' TO A POINT; THENCE S46°58'11"E 78.41' TO A POINT; THENCE S43°18'05"E 55.13' TO A POINT; THENCE S32°29'28"E 60.97' TO A POINT; THENCE S42°01'06"E 102.98' TO A POINT; THENCE S43°23'13"E 174.71' TO A POINT; THENCE S44°48'31"E 193.03' TO A POINT; THENCE S60°29'53"E 57.91' TO A POINT; THENCE S48°56'28"E 40.49' TO A POINT; THENCE S32°54'32"E 44.27' TO A POINT; THENCE S16°26'47"E 144.46' TO A POINT; THENCE S14°59'11"E 37.73' TO A POINT; THENCE S04°43'03"W 56.63' TO A POINT; THENCE S41°05'44"W 24.60' TO A POINT; THENCE S07°25'44"W 83.17' TO A POINT ON THE SOUTH LINE OF SAID TRACT; THENCE ALONG SAID SOUTH LINE N54°46'56"W 5.01' TO A POINT; THENCE LEAVING SAID SOUTH LINE N07°01'21"E 80.51' TO A POINT; THENCE N41°03'32"E 24.82' TO A POINT; THENCE N04°37'25"E 56.12' TO A POINT; THENCE N15°10'59"W 37.09' TO A POINT; THENCE N16°23'23"W 145.10' TO A POINT; THENCE N33°58'51"W 40.97' TO A POINT; THENCE N48°58'53"W 39.09' TO A POINT; THENCE N60°08'59"W 59.41' TO A POINT; THENCE N44°49'06"W 192.59' TO A POINT; THENCE N43°23'13"W 174.75' TO A POINT; THENCE N41°58'09"W 102.11' TO A POINT; THENCE N32°27'15"W 60.86' TO A POINT; THENCE N43°22'21"W 56.48' TO A POINT; THENCE N46°57'38"W 78.50' TO A POINT; THENCE N44°24'49"W 94.66' TO A POINT; THENCE N53°10'46"W 56.19' TO A POINT; THENCE N63°38'31"W 60.39' TO A POINT; THENCE N81°23'47"W 112.70' TO A POINT; THENCE S82°30'17"E 158.82' TO A POINT; THENCE S58°42'13"W 128.88' TO A POINT; THENCE S48°26'57"W 211.27' TO A POINT; THENCE N64°14'27"W 5.07' TO THE POINT OF BEGINNING CONTAINING 0.22 ACRES (9,581.55 SQUARE FEET), MORE OR LESS

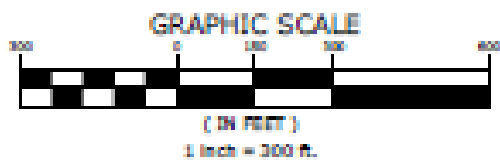



		PERMANENT CONSTRUCTION EASEMENT & TEMPORARY CONSTRUCTION EASEMENT									
		LITTLE ROCK MUNICIPAL AIRPORT COMMISSION LITTLE ROCK, AR									
<small>1380 S. Shreve Street Fayetteville, AR 72703 501-781-4321</small>	<small>2303 Oakleaf Road Little Rock, AR 72204 501-321-1400</small>	<small>2122 Walden Hill, Hwy. 6, Box 1 Fort Smith, AR 72613 501-424-1333</small>	<table border="1"> <tr> <td>APPROVED DATE 11-2-2021</td> <td>DRAWN BY WW</td> <td>CHECKED BY 5/1/2022</td> <td>SHEET NO. 2</td> </tr> <tr> <td>TOTAL 1" = 300'</td> <td>JOB NO. 21-5775</td> <td colspan="2">6</td> </tr> </table>	APPROVED DATE 11-2-2021	DRAWN BY WW	CHECKED BY 5/1/2022	SHEET NO. 2	TOTAL 1" = 300'	JOB NO. 21-5775	6	
APPROVED DATE 11-2-2021	DRAWN BY WW	CHECKED BY 5/1/2022	SHEET NO. 2								
TOTAL 1" = 300'	JOB NO. 21-5775	6									
<a href="http://www.mce.us.com">http://www.mce.us.com</a>											

P.C.E.		
Line Table		
Line #	Direction	Length
L36	N218°55'E	2344.48'
L37	S71°33'58"E	45.82'
L38	N141°17'58"E	143.76'
L39	S64°14'27"E	171.26'
L40	S64°14'27"E	5.07'
L41	N48°28'57"E	211.27'
L42	N58°42'13"E	128.88'
L43	N82°30'17"E	158.82'
L44	S81°23'47"E	112.70'
L45	S63°38'31"E	60.39'
L46	S53°10'46"E	56.19'
L47	S44°24'49"E	94.66'
L48	S48°57'38"E	78.50'
L49	S43°22'21"E	56.48'
L50	S32°27'15"E	60.86'
L51	S41°58'09"E	102.11'
L52	S43°23'13"E	174.75'
L53	S44°49'06"E	192.59'
L54	S60°08'59"E	59.41'
L55	S48°58'53"E	39.09'

P.C.E.		
Line Table		
Line #	Direction	Length
L56	S33°58'51"E	40.97'
L57	S18°23'23"E	145.10'
L58	S15°10'56"E	37.08'
L59	S4°37'25"W	56.12'
L60	S41°03'32"W	24.82'
L61	S7°01'21"W	80.51'
L62	N54°48'58"W	42.89'
L63	N10°10'03"E	83.94'
L64	N1°00'46"W	72.03'
L65	N13°57'30"W	81.07'
L66	N25°22'13"W	60.56'
L67	N36°40'39"W	63.40'
L68	N44°28'14"W	152.27'
L69	N48°45'33"W	131.80'
L70	N43°47'06"W	128.86'
L71	N40°07'58"W	53.07'
L72	N40°03'02"W	171.89'
L73	N44°56'46"W	159.59'
L74	N53°03'58"W	76.89'
L75	N67°28'43"W	64.80'

P.C.E.		
Line Table		
Line #	Direction	Length
L76	N80°48'00"W	68.24'
L77	S88°37'00"W	57.37'
L78	S80°12'01"W	60.82'
L79	S69°11'40"W	76.56'
L80	S55°16'42"W	60.07'
L81	S45°47'43"W	48.20'
L82	S48°07'33"W	165.28'
L83	N84°14'27"W	51.82'

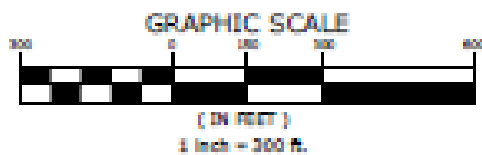



 <b>McCLELLAND CONSULTING ENGINEERS, INC.</b> <small>CONSULTING ENGINEERS AND ARCHITECTS          1000 W. UNIVERSITY BLVD., SUITE 100          LITTLE ROCK, AR 72202          (501) 225-1100  <a href="http://www.mce.us.com">http://www.mce.us.com</a> </small>	<b>DESIGNED BY CONSTRUCTION EXPERT &amp; TEMPORARY CONSTRUCTION EXPERT</b> <b>LITTLE ROCK REGIONAL AIRPORT CORRIDOR</b> <b>LITTLE ROCK, AR</b>	
	<small>DATE: 11/11/11          DRAWN BY: JMM          CHECKED BY: JMM          SCALE: AS SHOWN</small>	<small>DATE: 11/11/11          DRAWN BY: JMM          CHECKED BY: JMM          SCALE: AS SHOWN</small>

T.O.E.#		
Line Table		
Line #	Direction	Length
L36	N2°18'55"E	2344.48'
L37	S71°33'58"E	45.82'
L38	N14°17'58"E	143.79'
L39	S84°14'27"E	171.28'
L84	N48°29'25"E	315.36'
L85	N58°37'45"E	127.72'
L86	N82°23'08"E	161.38'
L87	S81°24'11"E	112.79'
L88	S84°02'56"E	81.90'
L89	S53°20'55"E	56.89'
L90	S44°32'25"E	95.81'
L91	S46°58'11"E	78.41'
L92	S43°18'06"E	55.13'
L93	S32°29'28"E	60.97'
L94	S42°01'08"E	102.98'
L95	S43°23'13"E	174.71'
L96	S44°48'31"E	183.03'
L97	S60°29'53"E	57.91'
L98	S48°56'28"E	40.49'
L99	S32°54'32"E	44.27'

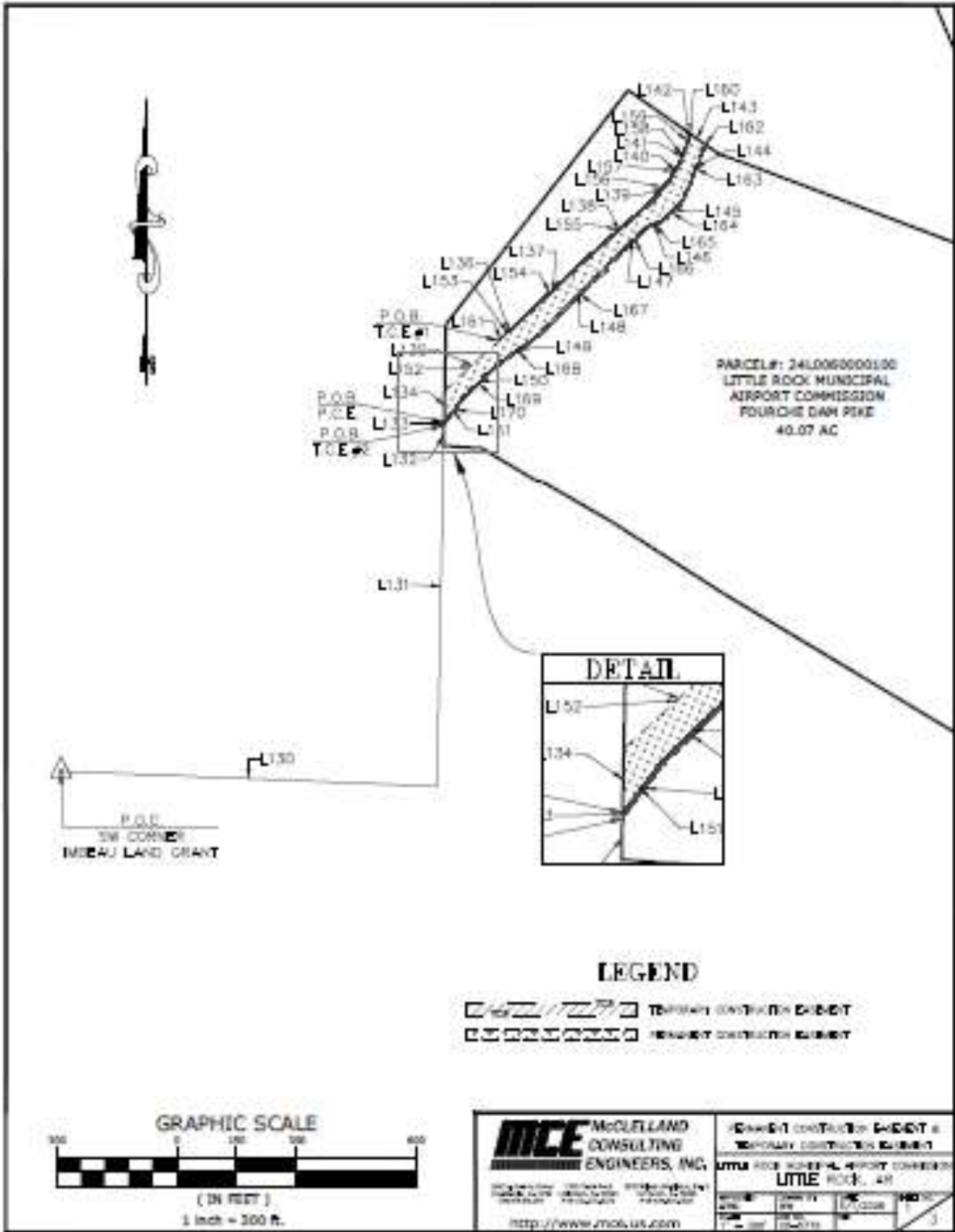
T.O.E.#		
Line Table		
Line #	Direction	Length
L100	S16°26'47"E	144.46'
L101	S14°59'11"E	37.73'
L102	S4°43'03"W	58.83'
L103	S41°05'44"W	24.60'
L104	S7°25'44"W	83.17'
L105	N54°46'56"W	5.01'
L81	N7°01'21"E	80.51'
L90	N41°03'32"E	24.82'
L59	N4°37'25"E	58.12'
L58	N15°10'58"W	37.09'
L57	N16°33'23"W	145.10'
L56	N33°58'51"W	40.87'
L55	N48°58'53"W	39.09'
L54	N60°08'59"W	59.41'
L53	N44°49'06"W	192.59'
L52	N43°23'13"W	174.75'
L51	N41°58'09"W	102.11'
L50	N32°27'15"W	60.86'
L49	N43°22'21"W	56.48'
L48	N48°57'38"W	78.50'

T.O.E.#		
Line Table		
Line #	Direction	Length
L47	N44°24'49"W	94.66'
L46	N53°10'46"W	56.19'
L45	N83°38'31"W	60.39'
L44	N81°23'40"W	112.70'
L43	S82°30'17"W	158.82'
L42	S58°42'13"W	128.88'
L41	S48°26'57"W	211.27'
L40	N84°14'27"W	5.07'



 <b>MCE</b> McLELLAND CONSULTING ENGINEERS, INC. <small>MEMBER OF THE MCE GROUP</small> <small>MEMBER OF THE MCE GROUP</small> <a href="http://www.mce.us.com">http://www.mce.us.com</a>	<b>REGISTERED CONSULTING ENGINEER &amp;          TEMPORARY CONTRACTOR LICENSED</b>	
	<b>LITTLE ROCK REGIONAL AIRPORT CONVERSION          LITTLE ROCK, AR</b>	
<small>DATE:</small> <small>BY:</small> <small>SCALE:</small>	<small>DATE:</small> <small>BY:</small> <small>SCALE:</small>	<small>DATE:</small> <small>BY:</small> <small>SCALE:</small>





**PERMANENT CONSTRUCTION EASEMENT**

A TRACT OF LAND BEING PART OF THE BAPTISTE IMBEAU SPANISH LAND GRANT, PULASKI COUNTY, ARKANSAS, AND BEING MORE PARTICULARLY DESCRIBED AS FOLLOWS:

COMMENCING AT THE SOUTHWEST CORNER OF SAID LAND GRANT, THENCE ALONG THE SOUTH LINE THEREOF S87°41'05"E 942.57' TO A POINT, THENCE LEAVING SAID SOUTH LINE N01°06'06"E 852.66' TO THE SOUTHWEST CORNER OF A TRACT OF LAND BEING PARCEL# 24L0060000100 PULASKI COUNTY RECORDS, THENCE ALONG THE WEST LINE OF SAID TRACT N01°06'06"E 50.80' TO A POINT, THENCE CONTINUE ALONG SAID WEST LINE N01°06'06"E 8.10' TO THE POINT OF BEGINNING; THENCE CONTINUE ALONG SAID WEST LINE N01°06'06"E 79.35' TO A POINT; THENCE LEAVING SAID WEST LINE N47°23'12"E 191.10' TO A POINT; THENCE N49°53'26"E 57.10' TO A POINT; THENCE N46°50'35"E 231.62' TO A POINT; THENCE N48°31'15"E 232.13' TO A POINT; THENCE N38°56'30"E 62.49' TO A POINT; THENCE N30°24'38"E 43.40' TO A POINT; THENCE N23°54'20"E 43.47' TO A POINT; THENCE N14°45'57"E 38.56' TO A POINT ON THE NORTH LINE OF SAID TRACT; THENCE ALONG SAID NORTH LINE S54°46'56"E 42.89' TO A POINT; THENCE LEAVING SAID NORTH LINE S21°42'48"W 150.70' TO A POINT; THENCE S45°29'28"W 75.99' TO A POINT; THENCE S72°02'51"W 33.47' TO A POINT; THENCE S46°19'22"W 106.04' TO A POINT; THENCE S44°39'52"W 279.64' TO A POINT; THENCE S54°15'13"W 132.73' TO A POINT; THENCE S46°11'08"W 111.06' TO A POINT THENCE S36°56'20"W 82.40' TO THE POINT OF BEGINNING CONTAINING 0.96 ACRES (41,929.01 SQUARE FEET), MORE OR LESS.

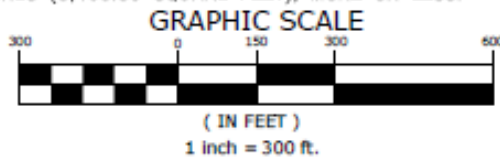
P.C.E.		
Line Table		
Line #	Direction	Length
L130	S87°41'05"E	942.57'
L131	N1°06'06"E	852.66'
L132	N1°06'15"E	50.80'
L133	N1°05'10"E	8.10'
L134	N1°06'06"E	79.35'
L135	N47°23'12"E	191.10'
L136	N49°53'26"E	57.10'
L137	N46°50'35"E	231.62'
L138	N48°31'15"E	232.13'
L139	N38°56'30"E	62.49'
L140	N30°24'38"E	43.40'

P.C.E.		
Line Table		
Line #	Direction	Length
L141	N23°54'20"E	43.47'
L142	N14°45'57"E	38.56'
L143	S54°46'56"E	42.89'
L144	S21°42'48"W	150.70'
L145	S45°29'28"W	75.99'
L146	S72°02'51"W	33.47'
L147	S46°19'22"W	106.04'
L148	S44°39'52"W	279.64'
L149	S54°15'13"W	132.73'
L150	S46°11'08"W	111.06'
L151	S36°56'20"W	82.40'

**TEMPORARY CONSTRUCTION EASEMENT #1**

A TRACT OF LAND BEING PART OF THE BAPTISTE IMBEAU SPANISH LAND GRANT, PULASKI COUNTY, ARKANSAS, AND BEING MORE PARTICULARLY DESCRIBED AS FOLLOWS:

COMMENCING AT THE SOUTHWEST CORNER OF SAID LAND GRANT, THENCE ALONG THE SOUTH LINE THEREOF S87°41'05"E 942.57' TO A POINT, THENCE LEAVING SAID SOUTH LINE N01°06'06"E 852.66' TO THE SOUTHWEST CORNER OF A TRACT OF LAND BEING PARCEL# 24L0060000100 PULASKI COUNTY RECORDS, THENCE ALONG THE WEST LINE OF SAID TRACT N01°06'06"E 50.80' TO A POINT, THENCE CONTINUE ALONG SAID WEST LINE N01°06'06"E 8.10' TO A POINT, THENCE CONTINUE ALONG SAID WEST LINE N01°06'06"E 79.35' TO A POINT, THENCE LEAVING SAID WEST LINE N47°23'12"E 183.95' TO THE POINT OF BEGINNING; THENCE N45°11'44"E 66.19' TO A POINT; THENCE N46°50'46"E 230.15' TO A POINT; THENCE N48°31'29"E 231.42' TO A POINT; THENCE N38°51'06"E 61.77' TO A POINT; THENCE N30°27'21"E 42.93' TO A POINT; THENCE N23°52'50"E 43.01' TO A POINT; THENCE N14°59'24"E 39.37' TO A POINT ON THE NORTH LINE OF SAID TRACT; THENCE ALONG SAID NORTH LINE S54°39'01"E 5.08' TO A POINT; THENCE LEAVING SAID NORTH LINE S14°45'57"W 38.56' TO A POINT; THENCE S23°54'20"W 43.47' TO A POINT; THENCE S30°24'38"W 43.40' TO A POINT; THENCE S38°56'30"W 62.49' TO A POINT; THENCE S48°31'15"W 232.13' TO A POINT; THENCE S46°50'35"W 231.62' TO A POINT; THENCE S49°53'26"W 57.10' TO A POINT; THENCE S47°26'59"W 7.15' TO THE POINT OF BEGINNING CONTAINING 0.08 ACRES (3,403.59 SQUARE FEET), MORE OR LESS.



		PERMANENT CONSTRUCTION EASEMENT & TEMPORARY CONSTRUCTION EASEMENT	
		LITTLE ROCK MUNICIPAL AIRPORT COMMISSION LITTLE ROCK, AR	
1000 & Orange Street Little Rock, AR 72204 501-781-4327	200 West 84th Little Rock, AR 72204 501-781-2120	1000 & Orange Street, Ste 3 Little Rock, AR 72204 501-781-4327	DATE: 5/1/2028 SCALE: 1" = 300' SHEET NO.: 2/3

T.C.E.#1		
Line Table		
Line #	Direction	Length
L130	S87°41'05"E	942.57'
L131	N1°06'06"E	852.66'
L132	N1°06'06"E	50.80'
L133	N1°06'06"E	8.10'
L134	N1°06'06"E	79.35'
L152	N47°23'12"E	183.95'
L153	N45°11'44"E	66.19'
L154	N46°50'46"E	230.15'
L155	N48°31'29"E	231.42'
L156	N38°51'06"E	61.77'
L157	N30°27'21"E	42.93'

T.C.E.#1		
Line Table		
Line #	Direction	Length
L158	N23°52'50"E	43.01'
L159	N14°59'24"E	39.37'
L160	S54°39'01"E	5.08'
L142	S14°45'57"W	38.56'
L141	S23°54'20"W	43.47'
L140	S30°24'38"W	43.40'
L139	S38°56'30"W	62.49'
L138	S48°31'15"W	232.13'
L137	S46°50'35"W	231.62'
L136	S49°53'26"W	57.10'
L161	S47°26'59"W	7.15'

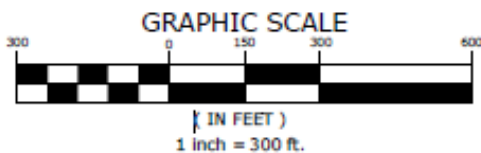
T.C.E.#2		
Line Table		
Line #	Direction	Length
L130	S87°41'05"E	942.57'
L131	N1°06'06"E	852.66'
L132	N1°06'06"E	50.80'
L133	N1°06'06"E	8.10'
L151	N36°56'20"E	82.40'
L150	N46°11'08"E	111.06'
L149	N54°15'13"E	132.73'
L148	N44°39'52"E	279.64'
L147	N46°19'22"E	106.04'
L146	N72°02'51"E	33.47'
L145	N45°29'28"E	75.99'

**TEMPORARY CONSTRUCTION EASEMENT #2**

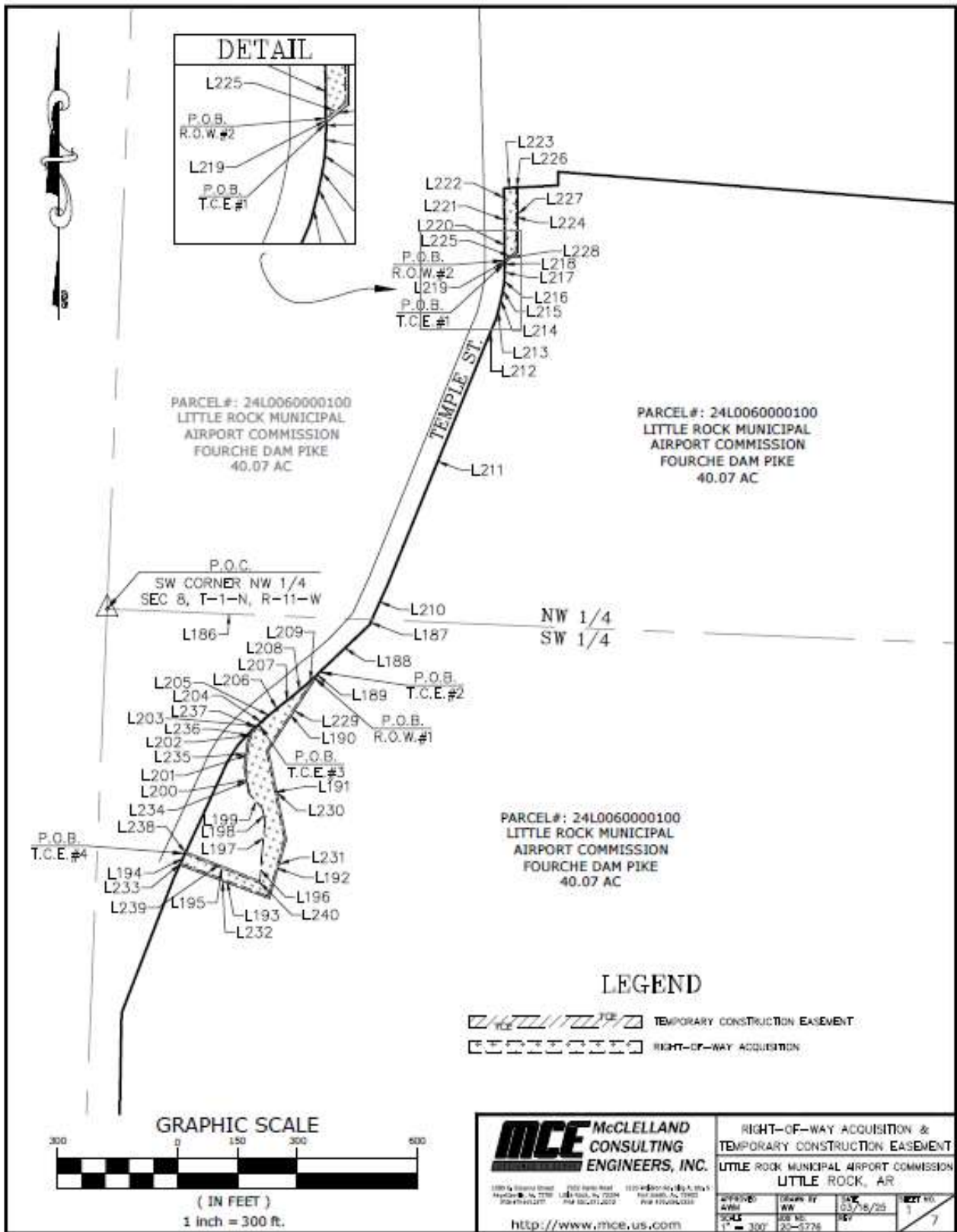
A TRACT OF LAND BEING PART OF THE BAPTISTE IMBEAU SPANISH LAND GRANT, PULASKI COUNTY, ARKANSAS, AND BEING MORE PARTICULARLY DESCRIBED AS FOLLOWS:

COMMENCING AT THE SOUTHWEST CORNER OF SAID LAND GRANT, THENCE ALONG THE SOUTH LINE THEREOF S87°41'05"E 942.57' TO A POINT, THENCE LEAVING SAID SOUTH LINE N01°06'06"E 852.66' TO THE SOUTHWEST CORNER OF A TRACT OF LAND BEING PARCEL# 24L0060000100 PULASKI COUNTY RECORDS, THENCE ALONG THE WEST LINE OF SAID TRACT N01°06'06"E 50.80' TO THE POINT OF BEGINNING; THENCE CONTINUE ALONG SAID WEST LINE N01°06'06"E 8.10' TO A POINT, THENCE LEAVING SAID WEST LINE N36°56'20"E 82.40' TO A POINT; THENCE N46°11'08"E 111.06' TO A POINT; THENCE N54°15'13"E 132.73' TO A POINT; THENCE N44°39'52"E 279.64' TO A POINT; THENCE N46°19'22"E 106.04' TO A POINT; THENCE N72°02'51"E 33.47' TO A POINT; THENCE N45°29'28"E 75.99' TO A POINT; THENCE N21°42'48"E 150.70' TO A POINT ON THE NORTH LINE OF SAID TRACT; THENCE ALONG SAID NORTH LINE S54°46'56"E 5.00' TO A POINT; THENCE LEAVING SAID NORTH LINE S21°40'12"W 149.96' TO A POINT; THENCE S45°46'50"W 80.10' TO A POINT; THENCE S72°02'10"W 33.01' TO A POINT; THENCE S46°06'55"W 104.71' TO A POINT; THENCE S44°39'45"W 279.58' TO A POINT; THENCE S54°15'17"W 132.61' TO A POINT; THENCE S46°10'26"W 110.33' TO A POINT; THENCE S37°04'40"W 88.38' TO THE POINT OF BEGINNING CONTAINING 0.11 ACRES (4,771.56 SQUARE FEET), MORE OR LESS.

T.C.E.#2		
Line Table		
Line #	Direction	Length
L144	N21°42'48"E	150.70'
L162	S54°46'56"E	5.00'
L163	S21°40'12"W	149.96'
L164	S45°46'50"W	80.10'
L165	S72°02'10"W	33.01'
L166	S46°06'55"W	104.71'
L167	S44°39'45"W	279.58'
L168	S54°15'17"W	132.61'
L169	S46°10'26"W	110.33'
L170	S37°04'40"W	88.38'



	RIGHT-OF-WAY ACQUISITION & TEMPORARY CONSTRUCTION EASEMENT	
	LITTLE ROCK MUNICIPAL AIRPORT COMMISSION LITTLE ROCK, AR	
<small>1209 N. Grand Street Little Rock, AR 72204 501-781-4227</small>	<small>2500 North West Little Rock, AR 72204 501-781-2010</small>	<small>12111 Beechley Blvd., Ste 1 Fort Smith, AR 72304 479-676-0333</small>
<small>APPROVED AWW SCALE 1" = 300'</small>	<small>DRAWN BY WW JOB NO. 25-5776</small>	<small>DATE 03/11/25 BY [Signature]</small>
<a href="http://www.mce.us.com">http://www.mce.us.com</a>		<small>SHEET NO. 3 3</small>



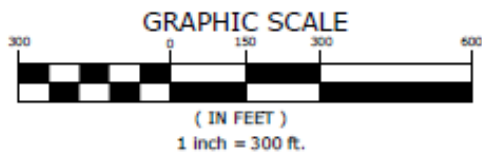
PERMANENT CONSTRUCTION EASEMENT #1

A TRACT OF LAND BEING A PART OF THE SOUTHWEST QUARTER OF SECTION 8, TOWNSHIP 1 NORTH, RANGE 11 WEST, PULASKI COUNTY, ARKANSAS, AND BEING MORE PARTICULARLY DESCRIBED AS FOLLOWS:

COMMENCING AT THE NORTHWEST CORNER OF THE SAID SOUTHWEST QUARTER OF SECTION 8, THENCE ALONG THE NORTH LINE THEREOF S87°41'05"E 663.10' TO A POINT ON THE EXISTING EAST RIGHT-OF-WAY LINE OF TEMPLE ST., THENCE ALONG SAID RIGHT-OF-WAY THE FOLLOWING COURSES AND DISTANCES: THENCE S24°31'41"W 14.47' TO A POINT; THENCE S46°26'30"W 171.30' TO A POINT; THENCE S46°34'01"W 19.76' TO THE POINT OF BEGINNING; THENCE LEAVING SAID RIGHT-OF-WAY S33°05'06"W 217.91' TO A POINT; THENCE S11°27'18"E 227.28' TO A POINT; THENCE S15°52'35"W 147.71' TO A POINT; THENCE N69°30'45"W 234.91' TO A POINT; THENCE N24°52'20"E 26.81' TO A POINT; THENCE S68°29'07"E 201.20' TO A POINT; THENCE N04°05'45"E 75.94' TO A POINT; THENCE N06°01'27"E 77.54' TO A POINT; THENCE N11°24'35"W 35.30' TO A POINT; THENCE N42°35'54"W 50.00' TO A POINT; THENCE N06°24'39"W 65.17' TO A POINT; THENCE N06°44'57"E 64.37' TO A POINT; THENCE N26°52'58"E 41.07' TO A POINT; THENCE N37°54'10"E 9.52' TO A POINT ON THE SAID EXISTING EAST RIGHT-OF-WAY OF TEMPLE ST.; THENCE ALONG SAID RIGHT-OF-WAY THE FOLLOWING COURSES AND DISTANCES: THENCE N46°05'41"E 21.48' TO A POINT; THENCE N50°17'00"E 28.34' TO A POINT; THENCE N49°40'20"E 22.34' TO A POINT; THENCE N52°00'23"E 41.22' TO A POINT; THENCE N50°02'31"E 42.17' TO A POINT; THENCE N47°29'42"E 26.12' TO THE POINT OF BEGINNING CONTAINING 0.68 ACRES (29,659.46 SQUARE FEET), MORE OR LESS.

P.C.E.#1		
Line Table		
Line #	Direction	Length
L186	S87°41'05"E	663.10'
L187	S24°31'41"W	14.47'
L188	S46°26'30"W	171.30'
L189	S46°34'01"W	19.76'
L190	S33°05'06"W	217.91'
L191	S11°27'18"E	227.28'
L192	S15°52'35"W	147.71'
L193	N69°30'45"W	234.91'
L194	N24°52'20"E	26.81'
L195	S68°29'07"E	201.20'
L196	N4°05'45"E	75.94'
L197	N6°01'27"E	77.54'

P.C.E.#1		
Line Table		
Line #	Direction	Length
L198	N11°24'35"W	35.30'
L199	N42°35'54"W	50.00'
L200	N6°24'39"W	65.17'
L201	N6°44'57"E	64.37'
L202	N26°52'58"E	41.07'
L203	N37°54'10"E	9.52'
L204	N46°05'41"E	21.48'
L205	N50°17'00"E	28.34'
L206	N49°40'20"E	22.34'
L207	N52°00'23"E	41.22'
L208	N50°02'31"E	42.17'
L209	N47°29'42"E	26.12'



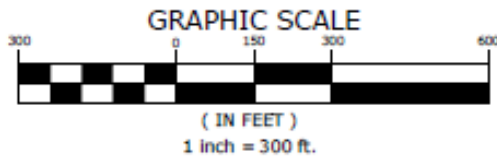
	PERMANENT CONSTRUCTION EASEMENT & TEMPORARY CONSTRUCTION EASEMENT	
	LITTLE ROCK MUNICIPAL AIRPORT COMMISSION LITTLE ROCK, AR	
<small>1500 N. Grand Street Little Rock, AR 72204 Phone 485-2277</small>	<small>2500 North West Little Rock, AR 72204 Phone 485-2112072</small>	<small>1120 N. 4th Ave., Ste 5 Little Rock, AR 72205 Phone 475-04333</small>
APPROVED AWN SCALE 1" = 300'	DRAWN BY WW JOB NO. 20-0726	DATE 5/1/2028 REV 2 SHEET NO. 2 7
<a href="http://www.mce.us.com">http://www.mce.us.com</a>		

PERMANENT CONSTRUCTION EASEMENT #2

A TRACT OF LAND BEING A PART OF THE NORTHWEST QUARTER OF SECTION 8, TOWNSHIP 1 NORTH, RANGE 11 WEST, PULASKI COUNTY, ARKANSAS, AND BEING MORE PARTICULARLY DESCRIBED AS FOLLOWS:

COMMENCING AT THE SOUTHWEST CORNER OF THE SAID NORTHWEST QUARTER OF SECTION 8, THENCE ALONG THE SOUTH LINE THEREOF S87°41'05"E 663.10' TO A POINT ON THE EXISTING EAST RIGHT-OF-WAY LINE OF TEMPLE ST., THENCE ALONG SAID RIGHT-OF-WAY THE FOLLOWING COURSES AND DISTANCES: THENCE N24°31'41"E 95.99' TO A POINT; THENCE N22°07'14"E 652.69' TO A POINT; THENCE N22°35'46"E 67.37' TO A POINT; THENCE N14°46'04"E 36.40' TO A POINT; THENCE N11°55'38"E 22.27' TO A POINT; THENCE N11°01'05"E 24.59' TO A POINT; THENCE N06°35'55"E 23.32' TO A POINT; THENCE N01°10'36"E 27.62' TO A POINT; THENCE N00°23'43"W 6.90' TO A POINT; THENCE CONTINUE N00°23'43"W 6.42' TO THE POINT OF BEGINNING; THENCE CONTINUE N00°23'43"W 75.67' TO A POINT; THENCE N01°00'42"W 50.79' TO A POINT; THENCE N01°26'44"W 54.15' TO THE NORTHWEST CORNER OF A TRACT OF LAND BEING PARCEL# 24L0060000100 PULASKI COUNTY RECORDS; THENCE ALONG THE NORTH LINE OF SAID TRACT N86°54'36"E 30.09' TO A POINT; THENCE LEAVING SAID NORTH LINE S00°00'08"E 159.92' TO A POINT; THENCE S50°44'36"W 35.21' TO THE POINT OF BEGINNING CONTAINING 0.11 ACRES (4,820.84 SQUARE FEET), MORE OR LESS.

P.C.E. #2		
Line Table		
Line #	Direction	Length
L186	S87°41'05"E	663.10'
L210	N24°31'41"E	95.99'
L211	N22°07'14"E	652.69'
L212	N22°35'46"E	67.37'
L213	N14°46'04"E	36.40'
L214	N11°55'38"E	22.27'
L215	N11°01'05"E	24.59'
L216	N6°35'55"E	23.32'
L217	N1°10'36"E	27.62'
L218	N0°23'43"W	6.90'
L219	N0°23'43"W	6.42'
L220	N0°23'43"W	75.67'
L221	N1°00'42"W	50.79'
L222	N1°26'44"W	54.15'
L223	N86°54'36"E	30.09'
L224	S0°00'08"E	159.92'
L225	S50°44'36"W	35.21'



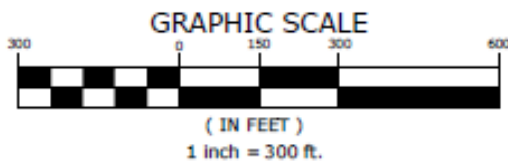
		PERMANENT CONSTRUCTION EASEMENT & TEMPORARY CONSTRUCTION EASEMENT				
		LITTLE ROCK MUNICIPAL AIRPORT COMMISSION LITTLE ROCK, AR				
<small>1200 S. Science Center Fayetteville, AR 72703 936-476-0270</small>	<small>2200 North West Little Rock, AR 72204 501-221-2000</small>	<small>1227 W. 83rd St., Ste. 5 Fort Smith, AR 72903 479-676-0333</small>	APPROVED AWB DATE 17 = 300'	DRAWN BY WW DATE NO. 20-0726	DATE 5/1/2020	SHEET NO. 3 7
<a href="http://www.mce.us.com">http://www.mce.us.com</a>						

TEMPORARY CONSTRUCTION EASEMENT #1

A TRACT OF LAND BEING A PART OF THE SOUTHWEST QUARTER OF SECTION 8, TOWNSHIP 1 NORTH, RANGE 11 WEST, PULASKI COUNTY, ARKANSAS, AND BEING MORE PARTICULARLY DESCRIBED AS FOLLOWS:

COMMENCING AT THE NORTHWEST CORNER OF THE SAID SOUTHWEST QUARTER OF SECTION 8, THENCE ALONG THE NORTH LINE THEREOF S87°41'05"E 663.10' TO A POINT ON THE EXISTING EAST RIGHT-OF-WAY LINE OF TEMPLE ST., THENCE ALONG SAID RIGHT-OF-WAY THE FOLLOWING COURSES AND DISTANCES: THENCE N24°31'41"E 95.99' TO A POINT; THENCE N22°07'14"E 652.69' TO A POINT; THENCE N22°35'46"E 67.37' TO A POINT; THENCE N14°46'04"E 36.40' TO A POINT; THENCE N11°55'38"E 22.27' TO A POINT; THENCE N11°01'05"E 24.59' TO A POINT; THENCE N06°35'55"E 23.32' TO A POINT; THENCE N01°10'36"E 27.62' TO A POINT; THENCE N00°23'43"W 6.90' TO THE POINT OF BEGINNING; THENCE CONTINUE N00°23'43"W 6.42' TO A POINT; THENCE LEAVING SAID RIGHT-OF-WAY N50°44'36"E 35.21' TO A POINT; THENCE N00°00'08"W 159.92' TO THE NORTH LINE OF A TRACT OF LAND BEING PARCEL# 24L0060000100 PULASKI COUNTY RECORDS; THENCE ALONG THE NORTH LINE OF SAID TRACT N86°54'36"E 5.01' TO A POINT; THENCE LEAVING SAID NORTH LINE S00°00'08"E 162.56' TO A POINT; THENCE S50°44'36"W 41.61' TO THE POINT OF BEGINNING CONTAINING 0.02 ACRES (998.27 SQUARE FEET), MORE OR LESS.

T.C.E.#1		
Line Table		
Line #	Direction	Length
L186	S87°41'05"E	663.10'
L210	N24°31'41"E	95.99'
L211	N22°07'14"E	652.69'
L212	N22°35'46"E	67.37'
L213	N14°46'04"E	36.40'
L214	N11°55'38"E	22.27'
L215	N11°01'05"E	24.59'
L216	N6°35'55"E	23.32'
L217	N1°10'36"E	27.62'
L218	N0°23'43"W	6.90'
L219	N0°23'43"W	6.42'
L225	N50°44'36"E	35.21'
L224	N0°00'08"W	159.92'
L226	N86°54'36"E	5.01'
L227	S0°00'08"E	162.56'
L228	S50°44'36"W	41.61'



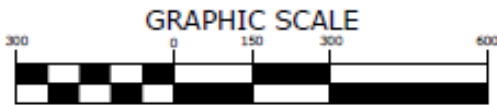
		PERMANENT CONSTRUCTION EASEMENT & TEMPORARY CONSTRUCTION EASEMENT	
		LITTLE ROCK MUNICIPAL AIRPORT COMMISSION LITTLE ROCK, AR	
APPROVED: AWM	DRAWN BY: WW	DATE: 5/17/2028	SHEET NO. 4
SCALE: 1" = 300'	JOB NO. 20-0726	REV	7
<a href="http://www.mce.us.com">http://www.mce.us.com</a>			

TEMPORARY CONSTRUCTION EASEMENT #2

A TRACT OF LAND BEING A PART OF THE NORTHWEST QUARTER OF SECTION 8, TOWNSHIP 1 NORTH, RANGE 11 WEST, PULASKI COUNTY, ARKANSAS, AND BEING MORE PARTICULARLY DESCRIBED AS FOLLOWS:

COMMENCING AT THE SOUTHWEST CORNER OF THE SAID NORTHWEST QUARTER OF SECTION 8, THENCE ALONG THE SOUTH LINE THEREOF S87°41'05"E 663.10' TO A POINT ON THE EXISTING EAST RIGHT-OF-WAY LINE OF TEMPLE ST., THENCE ALONG SAID RIGHT-OF-WAY THE FOLLOWING COURSES AND DISTANCES: THENCE S24°31'41"W 14.47' TO A POINT; THENCE S46°26'30"W 171.30' TO THE POINT OF BEGINNING; THENCE LEAVING SAID RIGHT-OF-WAY S33°05'06"W 235.15' TO A POINT; THENCE S11°26'54"E 226.44' TO A POINT; THENCE S15°52'35"W 154.42' TO A POINT; THENCE N69°30'25"W 240.30' TO A POINT ON THE SAID EAST RIGHT-OF-WAY; THENCE ALONG SAID RIGHT-OF-WAY N24°52'20"E 5.06' TO A POINT; THENCE LEAVING SAID RIGHT-OF-WAY S69°30'45"E 234.91' TO A POINT; THENCE N15°52'35"E 147.71' TO A POINT; THENCE N11°27'18"W 227.28' TO A POINT; THENCE N33°05'06"E 217.91' TO A POINT ON THE SAID EAST RIGHT-OF-WAY; THENCE ALONG SAID RIGHT-OF-WAY N46°34'01"E 19.76' TO THE POINT OF BEGINNING CONTAINING 0.09 ACRES (3,994.26 SQUARE FEET), MORE OR LESS.

T.C.E.#2		
Line Table		
Line #	Direction	Length
L186	S87°41'05"E	663.10'
L187	S24°31'41"W	14.47'
L188	S46°26'30"W	171.30'
L229	S33°05'06"W	235.15'
L230	S11°26'54"E	226.44'
L231	S15°52'35"W	154.42'
L232	N69°30'25"W	240.30'
L233	N24°52'20"E	5.06'
L193	S69°30'45"E	234.91'
L192	N15°52'35"E	147.71'
L191	N11°27'18"W	227.28'
L190	N33°05'06"E	217.91'
L189	N46°34'01"E	19.76'



( IN FEET )  
1 inch = 300 ft.

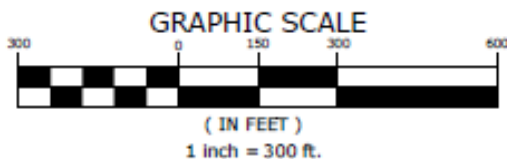
		PERMANENT CONSTRUCTION EASEMENT & TEMPORARY CONSTRUCTION EASEMENT	
		LITTLE ROCK MUNICIPAL AIRPORT COMMISSION LITTLE ROCK, AR	
<small>1500 W. 1000th Street Pulaski, AR 72454 PH: 479-441-2277</small>	<small>2100 WARD ROAD LITTLE ROCK, AR 72204 PH: 479-271-2270</small>	<small>1120 W. 100th Ave., Box 1 Pulaski, AR 72454 PH: 479-441-2277</small>	APPROVED DATE 5/1/2028 SCALE 1" = 300'
<a href="http://www.mce.us.com">http://www.mce.us.com</a>			SHEET NO. 5 / 7

TEMPORARY CONSTRUCTION EASEMENT #3

A TRACT OF LAND BEING A PART OF THE SOUTHWEST QUARTER OF SECTION 8, TOWNSHIP 1 NORTH, RANGE 11 WEST, PULASKI COUNTY, ARKANSAS, AND BEING MORE PARTICULARLY DESCRIBED AS FOLLOWS:

COMMENCING AT THE NORTHWEST CORNER OF THE SAID SOUTHWEST QUARTER OF SECTION 8, THENCE ALONG THE NORTH LINE THEREOF S87°41'05"E 663.10' TO A POINT ON THE EXISTING EAST RIGHT-OF-WAY LINE OF TEMPLE ST., THENCE ALONG SAID RIGHT-OF-WAY THE FOLLOWING COURSES AND DISTANCES: THENCE S24°31'41"W 14.47' TO A POINT; THENCE S46°26'30"W 171.30' TO A POINT; THENCE S46°34'01"W 19.76' TO A POINT; THENCE S47°29'42"W 26.12' TO A POINT; THENCE S50°02'31"W 42.17' TO A POINT; THENCE S52°00'23"W 41.22' TO A POINT; THENCE S49°40'20"W 22.34' TO A POINT; THENCE S50°17'00"W 28.34' TO A POINT; THENCE S46°05'41"W 21.48' TO A POINT TO THE POINT OF BEGINNING; THENCE LEAVING SAID RIGHT-OF-WAY S37°54'10"W 9.52' TO A POINT; THENCE S26°52'58"W 41.07' TO A POINT; THENCE S06°44'57"W 64.37' TO A POINT; THENCE S06°24'39"E 65.17' TO A POINT; THENCE N11°05'51"W 66.10' TO A POINT; THENCE N07°09'18"E 65.57' TO A POINT; THENCE N24°40'07"E 33.78' TO A POINT ON THE SAID EAST RIGHT-OF-WAY; THENCE ALONG SAID RIGHT-OF-WAY N51°10'38"E 19.46' TO THE POINT OF BEGINNING CONTAINING 0.02 ACRES (701.14 SQUARE FEET), MORE OR LESS.

T.C.E.#3		
Line Table		
Line #	Direction	Length
L186	S87°41'05"E	663.10'
L187	S24°31'41"W	14.47'
L188	S46°26'30"W	171.30'
L189	S46°34'01"W	19.76'
L209	S47°29'42"W	26.12'
L208	S50°02'31"W	42.17'
L207	S52°00'23"W	41.22'
L206	S49°40'20"W	22.34'
L205	S50°17'00"W	28.34'
L204	S46°05'41"W	21.48'
L203	S37°54'10"W	9.52'
L202	S26°52'58"W	41.07'
L201	S6°44'57"W	64.37'
L200	S6°24'39"E	65.17'
L234	N11°05'51"W	66.10'
L235	N7°09'18"E	65.57'
L236	N24°40'07"E	33.78'
L237	N51°10'38"E	19.46'



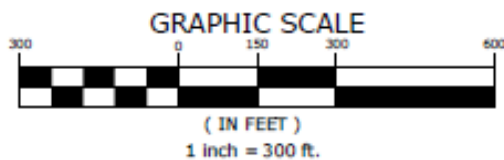
		PERMANENT CONSTRUCTION EASEMENT & TEMPORARY CONSTRUCTION EASEMENT	
		LITTLE ROCK MUNICIPAL AIRPORT COMMISSION LITTLE ROCK, AR	
APPROVED AWM	DRAWN BY WW	DATE 5/17/2028	SHEET NO. 6
SCALE 1" = 300'	JOB NO. 20-5726	REV	7
<a href="http://www.mce.us.com">http://www.mce.us.com</a>			

TEMPORARY CONSTRUCTION EASEMENT #4

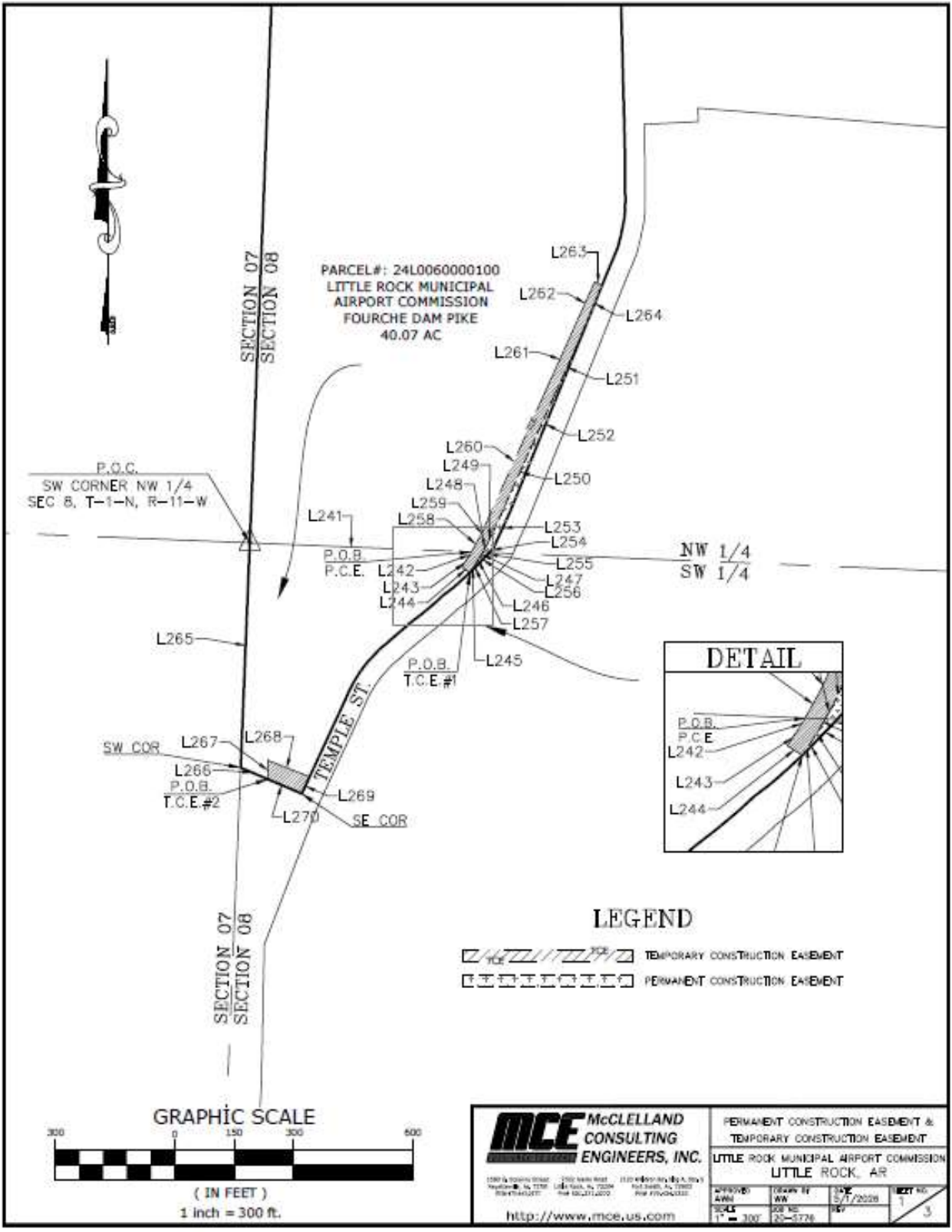
A TRACT OF LAND BEING A PART OF THE SOUTHWEST QUARTER OF SECTION 8, TOWNSHIP 1 NORTH, RANGE 11 WEST, PULASKI COUNTY, ARKANSAS, AND BEING MORE PARTICULARLY DESCRIBED AS FOLLOWS:

COMMENCING AT THE NORTHWEST CORNER OF THE SAID SOUTHWEST QUARTER OF SECTION 8, THENCE ALONG THE NORTH LINE THEREOF S87°41'05"E 663.10' TO A POINT ON THE EXISTING EAST RIGHT-OF-WAY LINE OF TEMPLE ST., THENCE ALONG SAID RIGHT-OF-WAY THE FOLLOWING COURSES AND DISTANCES: THENCE S24°31'41"W 14.47' TO A POINT; THENCE S46°26'30"W 171.30' TO A POINT; THENCE S46°34'01"W 19.76' TO A POINT; THENCE LEAVING SAID RIGHT-OF-WAY S33°05'06"W 217.91' TO A POINT; THENCE S11°27'18"E 227.28' TO A POINT; THENCE S15°52'35"W 147.71' TO A POINT; THENCE N69°30'45"W 234.91' TO A POINT ON THE SAID EAST RIGHT-OF-WAY; THENCE ALONG SAID RIGHT-OF-WAY N24°52'20"E 26.81' TO THE POINT OF BEGINNING; THENCE CONTINUE ALONG SAID RIGHT-OF-WAY N24°52'20"E 5.06' TO A POINT; THENCE LEAVING SAID RIGHT-OF-WAY S68°27'28"E 199.35' TO A POINT; THENCE S04°05'45"W 5.19' TO A POINT; THENCE N68°29'07"W 201.20' TO THE POINT OF BEGINNING CONTAINING 0.02 ACRES (1,001.43 SQUARE FEET), MORE OR LESS.

T.C.E.#4		
Line Table		
Line #	Direction	Length
L186	S87°41'05"E	663.10'
L187	S24°31'41"W	14.47'
L188	S46°26'30"W	171.30'
L189	S46°34'01"W	19.76'
L190	S33°05'06"W	217.91'
L191	S11°27'18"E	227.28'
L192	S15°52'35"W	147.71'
L193	N69°30'45"W	234.91'
L194	N24°52'20"E	26.81'
L238	N24°52'20"E	5.06'
L239	S68°27'28"E	199.35'
L240	S4°05'45"W	5.19'
L195	N68°29'07"W	201.20'



	PERMANENT CONSTRUCTION EASEMENT & TEMPORARY CONSTRUCTION EASEMENT										
	LITTLE ROCK MUNICIPAL AIRPORT COMMISSION LITTLE ROCK, AR										
<small>1200 E. 20th Street Fayetteville, AR 72703 501-473-6327</small>	<small>2700 North Road Little Rock, AR 72204 501-371-2070</small>	<small>1120 W. 4th Street, Suite 101 Little Rock, AR 72202 501-473-6327</small>	<table border="1"> <tr> <td>APPROVED AWB</td> <td>DRAWN BY WW</td> <td>DATE 5/1/2028</td> <td>SHEET NO. 7</td> </tr> <tr> <td>SCALE 1" = 300'</td> <td>JOB NO. 25-5726</td> <td colspan="2"></td> </tr> </table>	APPROVED AWB	DRAWN BY WW	DATE 5/1/2028	SHEET NO. 7	SCALE 1" = 300'	JOB NO. 25-5726		
APPROVED AWB	DRAWN BY WW	DATE 5/1/2028	SHEET NO. 7								
SCALE 1" = 300'	JOB NO. 25-5726										
<a href="http://www.mce.us.com">http://www.mce.us.com</a>											

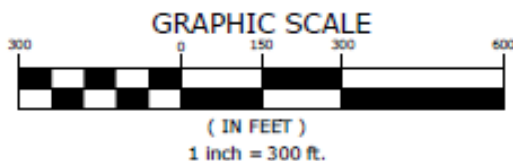


PERMANENT CONSTRUCTION EASEMENT

A TRACT OF LAND BEING A PART OF THE SOUTHWEST QUARTER AND THE NORTHWEST QUARTER OF SECTION 8, TOWNSHIP 1 NORTH, RANGE 11 WEST, PULASKI COUNTY, ARKANSAS, AND BEING MORE PARTICULARLY DESCRIBED AS FOLLOWS:

COMMENCING AT THE SOUTHWEST CORNER OF THE SAID NORTHWEST QUARTER, THENCE ALONG THE SOUTH LINE THEREOF S87°41'05"E 558.95' TO A POINT; THENCE LEAVING SAID SOUTH LINE S32°08'13"W 19.63' TO A POINT; THENCE S33°36'05"W 26.02' TO A POINT; THENCE S56°16'33"E 25.14' TO A POINT ON THE WEST RIGHT-OF-WAY LINE OF TEMPLE ST., SAID POINT BEING THE POINT OF BEGINNING; THENCE LEAVING SAID RIGHT-OF-WAY N33°22'15"E 25.07' TO A POINT; THENCE N31°57'08"E 24.85' TO A POINT; THENCE N29°16'13"E 10.43' TO A POINT ON THE SAID SOUTH LINE OF THE NORTHWEST QUARTER; THENCE CONTINUE N29°16'13"E 20.50' TO A POINT; THENCE N26°05'03"E 32.49' TO A POINT; THENCE N24°12'30"E 380.57' TO A POINT; THENCE N24°14'09"E 185.87' TO A POINT ON THE SAID WEST RIGHT-OF-WAY OF TEMPLE ST.; THENCE CONTINUE ALONG SAID RIGHT-OF-WAY THE FOLLOWING COURSES AND DISTANCES: THENCE S22°07'14"W 496.11' TO A POINT; THENCE S24°31'41"W 101.60' TO A POINT; THENCE S42°16'56"W 16.64' TO A POINT ON THE SAID SOUTH LINE OF THE NORTHWEST QUARTER; THENCE CONTINUE S42°16'56"W 10.92' TO A POINT; THENCE S44°13'12"W 26.70' TO A POINT; THENCE S43°31'23"W 27.10' TO A POINT; THENCE S47°18'58"W 5.30' TO THE POINT OF BEGINNING CONTAINING 0.16 ACRES (7,080.62 SQUARE FEET), MORE OR LESS.

P.C.E..		
Line Table		
Line #	Direction	Length
L241	S87°41'05"E	558.95'
L242	S32°08'13"W	19.63'
L243	S33°36'05"W	26.02'
L244	S56°16'33"E	25.14'
L245	N33°22'15"E	25.07'
L246	N31°57'08"E	24.85'
L247	N29°16'13"E	10.43'
L248	N29°16'13"E	20.50'
L249	N26°05'03"E	32.49'
L250	N24°12'30"E	380.57'
L251	N24°14'09"E	185.87'
L252	S22°07'14"W	496.11'
L253	S24°31'41"W	101.60'
L254	S42°16'56"W	16.64'
L255	S42°16'56"W	10.92'
L256	S44°13'12"W	26.70'
L257	S43°31'23"W	27.10'
L258	S47°18'58"W	5.30'



	PERMANENT CONSTRUCTION EASEMENT & TEMPORARY CONSTRUCTION EASEMENT	
	LITTLE ROCK MUNICIPAL AIRPORT COMMISSION LITTLE ROCK, AR	
<small>2389 S. Grand Street Raytown, Mo. 63128 816-431-1217</small>	<small>7200 North Road Little Rock, Ar. 72204 501-971-2020</small>	<small>1127 W. 80th Street, Ste. A, Box 5 Fort Smith, Ar. 72303 479-624-0333</small>
APPROVED AWM	DRAWN BY WW	DATE 5/1/2028
SCALE 1" = 300'	JOB NO. 20-0728	REVISION 2
<a href="http://www.mce.us.com">http://www.mce.us.com</a>		SHEET NO. 2 3

TEMPORARY CONSTRUCTION EASEMENT #1

A TRACT OF LAND BEING A PART OF THE SOUTHWEST QUARTER AND THE NORTHWEST QUARTER OF SECTION 8, TOWNSHIP 1 NORTH, RANGE 11 WEST, PULASKI COUNTY, ARKANSAS, AND BEING MORE PARTICULARLY DESCRIBED AS FOLLOWS:

COMMENCING AT THE SOUTHWEST CORNER OF THE SAID NORTHWEST QUARTER, THENCE ALONG THE SOUTH LINE THEREOF S87°41'05"E 558.95' TO THE POINT OF BEGINNING; THENCE LEAVING SAID SOUTH LINE N28°54'56"E 44.41' TO A POINT; THENCE N25°12'40"E 17.65' TO A POINT; THENCE N24°13'59"E 382.23' TO A POINT; THENCE N24°10'37"E 175.25' TO A POINT; THENCE N24°13'54"E 127.82' TO A POINT; THENCE S63°13'17"E 20.77' TO A POINT ON THE EXISTING WEST RIGHT-OF-WAY LINE OF TEMPLE ST.; THENCE ALONG SAID RIGHT-OF-WAY S22°07'14"W 116.52' TO A POINT; THENCE LEAVING SAID RIGHT-OF-WAY S24°14'09"W 185.87' TO A POINT; THENCE S24°12'30"W 380.57' TO A POINT; THENCE S26°05'03"W 32.49' TO A POINT; THENCE S29°16'13"W 20.50' TO A POINT ON THE SAID SOUTH LINE OF THE NORTHWEST QUARTER; THENCE CONTINUE S29°16'13"W 10.43' TO A POINT; THENCE S31°57'08"W 24.85' TO A POINT; THENCE S33°22'15"W 25.07' TO A POINT ON THE SAID WEST RIGHT-OF-WAY; THENCE LEAVING SAID RIGHT-OF-WAY N56°16'33"W 25.14' TO A POINT; THENCE N33°36'05"E 26.02' TO A POINT; THENCE N32°08'13"E 19.63' TO THE POINT OF BEGINNING CONTAINING 0.45 ACRES (19,561.44 SQUARE FEET), MORE OR LESS.

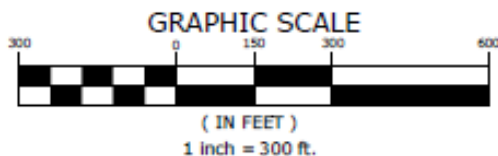
T.C.E.#1		
Line Table		
Line #	Direction	Length
L241	S87°41'05"E	558.95'
L258	N28°54'56"E	44.41'
L259	N25°12'40"E	17.65'
L260	N24°13'59"E	382.23'
L261	N24°10'37"E	175.25'
L262	N24°13'54"E	127.82'
L263	S63°13'17"E	20.77'
L264	S22°07'14"W	116.52'
L251	S24°14'09"W	185.87'
L250	S24°12'30"W	380.57'
L249	S26°05'03"W	32.49'
L248	S29°16'13"W	20.50'
L247	S29°16'13"W	10.43'
L246	S31°57'08"W	24.85'
L245	S33°22'15"W	25.07'
L244	N56°16'33"W	25.14'
L243	N33°36'05"E	26.02'
L242	N32°08'13"E	19.63'

TEMPORARY CONSTRUCTION EASEMENT #2

A TRACT OF LAND BEING A PART OF THE SOUTHWEST QUARTER OF SECTION 8, TOWNSHIP 1 NORTH, RANGE 11 WEST, PULASKI COUNTY, ARKANSAS, AND BEING MORE PARTICULARLY DESCRIBED AS FOLLOWS:

COMMENCING AT THE NORTHWEST CORNER OF THE SAID SOUTHWEST QUARTER, THENCE ALONG THE WEST LINE THEREOF S02°18'55"W 566.00' TO THE SOUTHWEST CORNER OF A TRACT OF LAND BEING PARCEL# 24L0060000100 PULASKI COUNTY RECORDS; THENCE ALONG THE SOUTH LINE OF SAID TRACT S66°49'24"E 73.83' TO THE POINT OF BEGINNING; THENCE LEAVING SAID SOUTH LINE N01°09'37"E 47.10' TO A POINT; THENCE S68°28'24"E 112.76' TO A POINT ON THE EXISTING WEST RIGHT-OF-WAY LINE OF TEMPLE ST.; THENCE ALONG SAID RIGHT-OF-WAY S24°53'05"W 46.93' TO THE SOUTHEAST CORNER OF SAID TRACT; THENCE ALONG THE SOUTH LINE OF SAID TRACT N66°49'24"E 93.66' TO THE POINT OF BEGINNING CONTAINING 0.11 ACRES (4,686.15 SQUARE FEET), MORE OR LESS.

T.C.E.#2		
Line Table		
Line #	Direction	Length
L265	S2°18'55"W	566.00'
L266	S66°49'24"E	73.83'
L267	N1°09'37"E	47.10'
L268	S68°28'24"E	112.76'
L269	S24°53'05"W	46.93'
L270	N66°49'24"W	93.66'



		PERMANENT CONSTRUCTION EASEMENT & TEMPORARY CONSTRUCTION EASEMENT	
		LITTLE ROCK MUNICIPAL AIRPORT COMMISSION LITTLE ROCK, AR	
<small>1380 N. Orange Street Fayetteville, AR 72701 936-634-2221</small>	<small>2100 North Road Little Rock, AR 72204 501-333-1000</small>	<small>1125 W. 40th Ave., Ste A, Box 1 Fort Smith, AR 72903 479-634-2221</small>	APPROVED BY: [Signature] DATE: 5/1/2028 SCALE: 1" = 300' SHEET NO.: 3
<a href="http://www.mce.us.com">http://www.mce.us.com</a>			SHEET NO.: 3