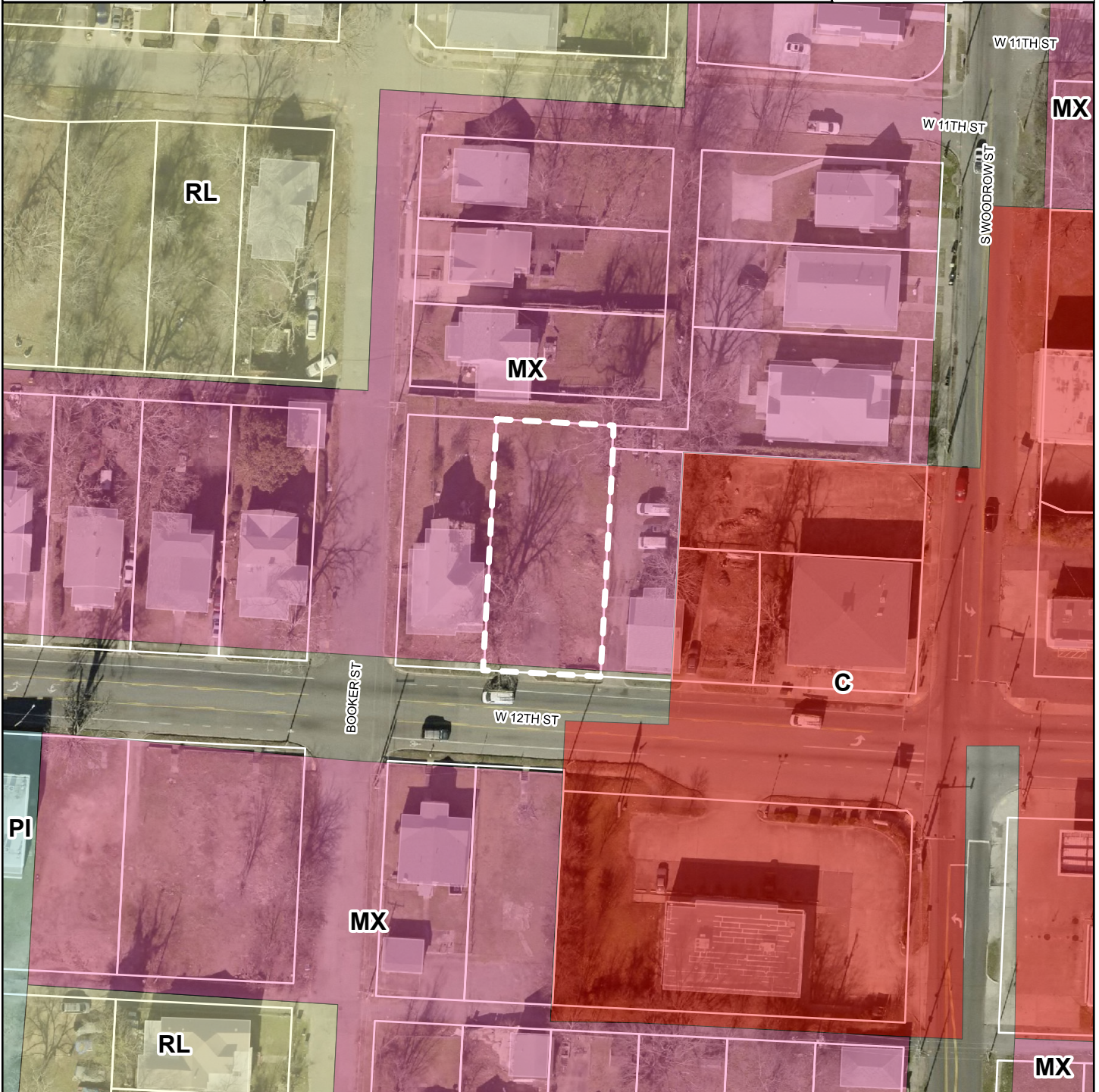


Z-9650-A






2916 W. 12TH ST.

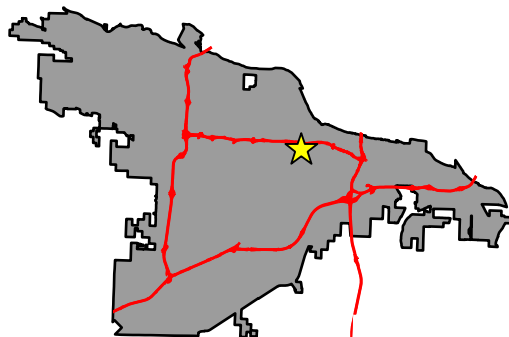
Planning Commission
MAY 14, 2026

Land Use



Legend

-  Parcel Lines
-  PUBLIC INSTITUTION
-  RESIDENTIAL LOW DENSITY
-  COMMERCIAL
-  MIXED USE



DEPARTMENT OF
**PLANNING &
DEVELOPMENT**