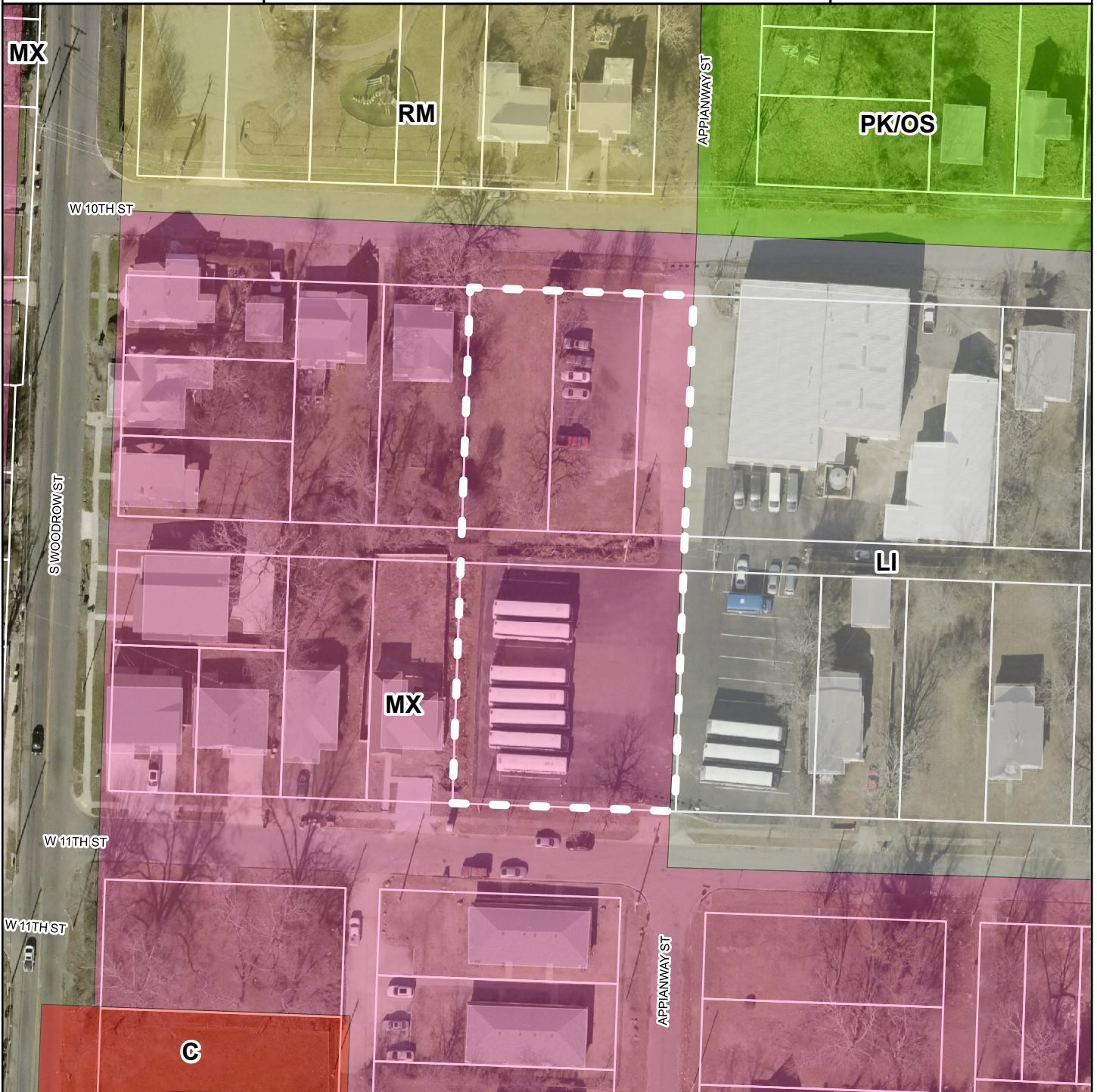


Z-10295

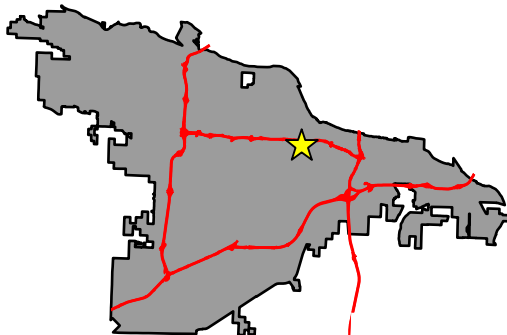
N. SIDE of W. 11th ST., APPROX.
200' E. of S. WOODROW ST.

Land Use



Legend

- Parcel Lines
- LIGHT INDUSTRIAL
- PARK / OPEN SPACE
- RESIDENTIAL MEDIUM DENSITY
- MIXED USE



DEPARTMENT OF
**PLANNING &
DEVELOPMENT**