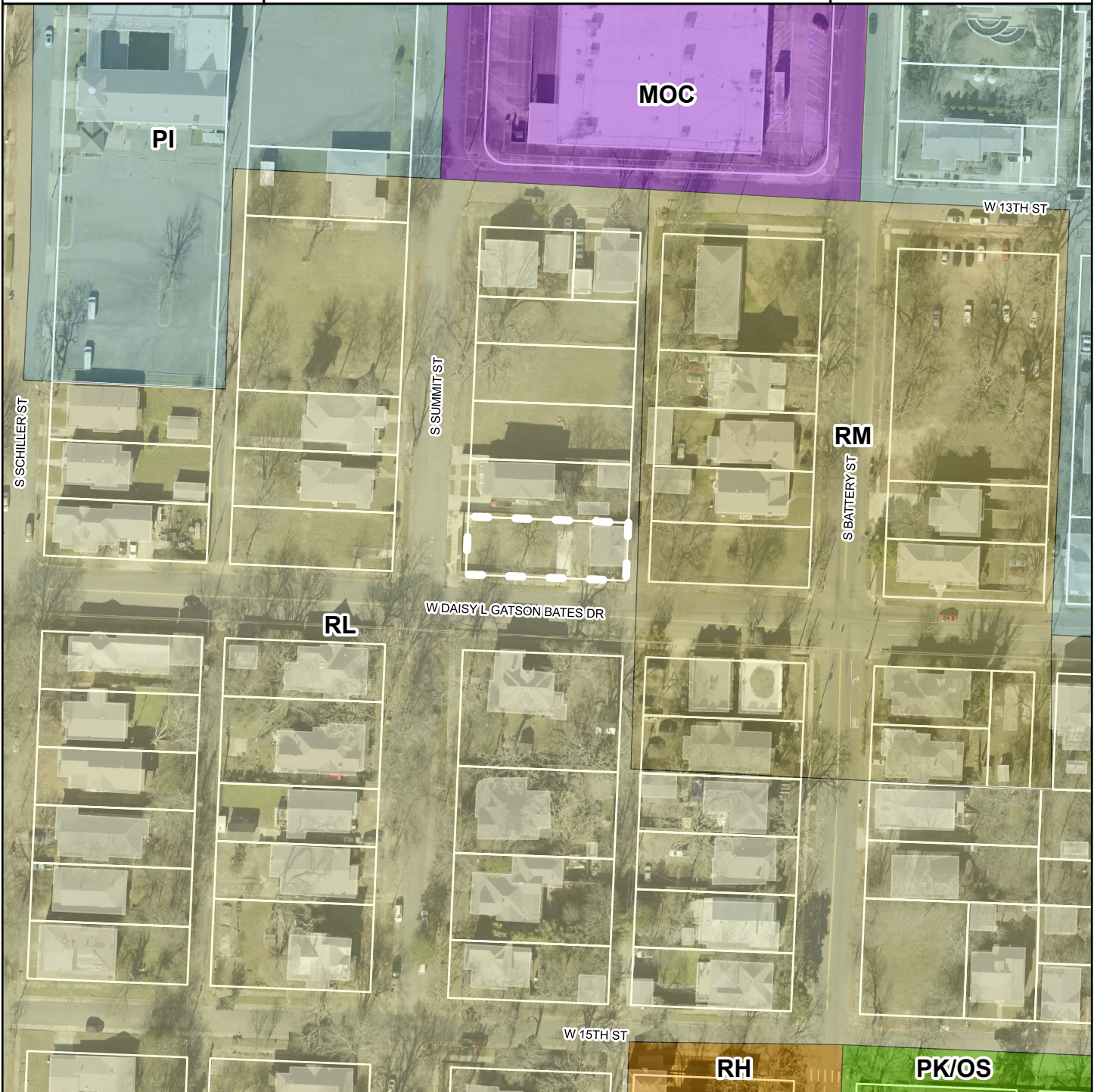


Z-10284








1912 W. DAISY G. BATES DR.

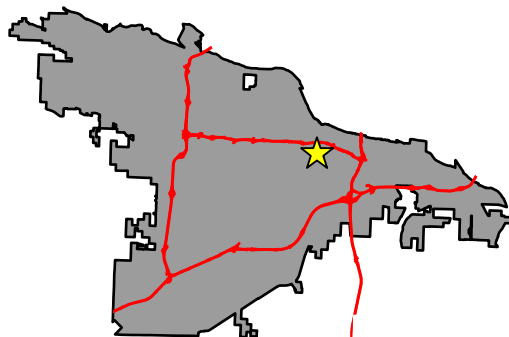
PLANNING COMMISSION  
MAY 14, 2026

Land Use



**Legend**

-  Parcel Lines
-  PUBLIC INSTITUTION
-  PARK / OPEN SPACE
-  RESIDENTIAL LOW DENSITY
-  RESIDENTIAL MEDIUM DENSITY
-  RESIDENTIAL HIGH DENSITY
-  MIXED OFFICE AND COMMERCIAL



DEPARTMENT OF  
**PLANNING &  
DEVELOPMENT**