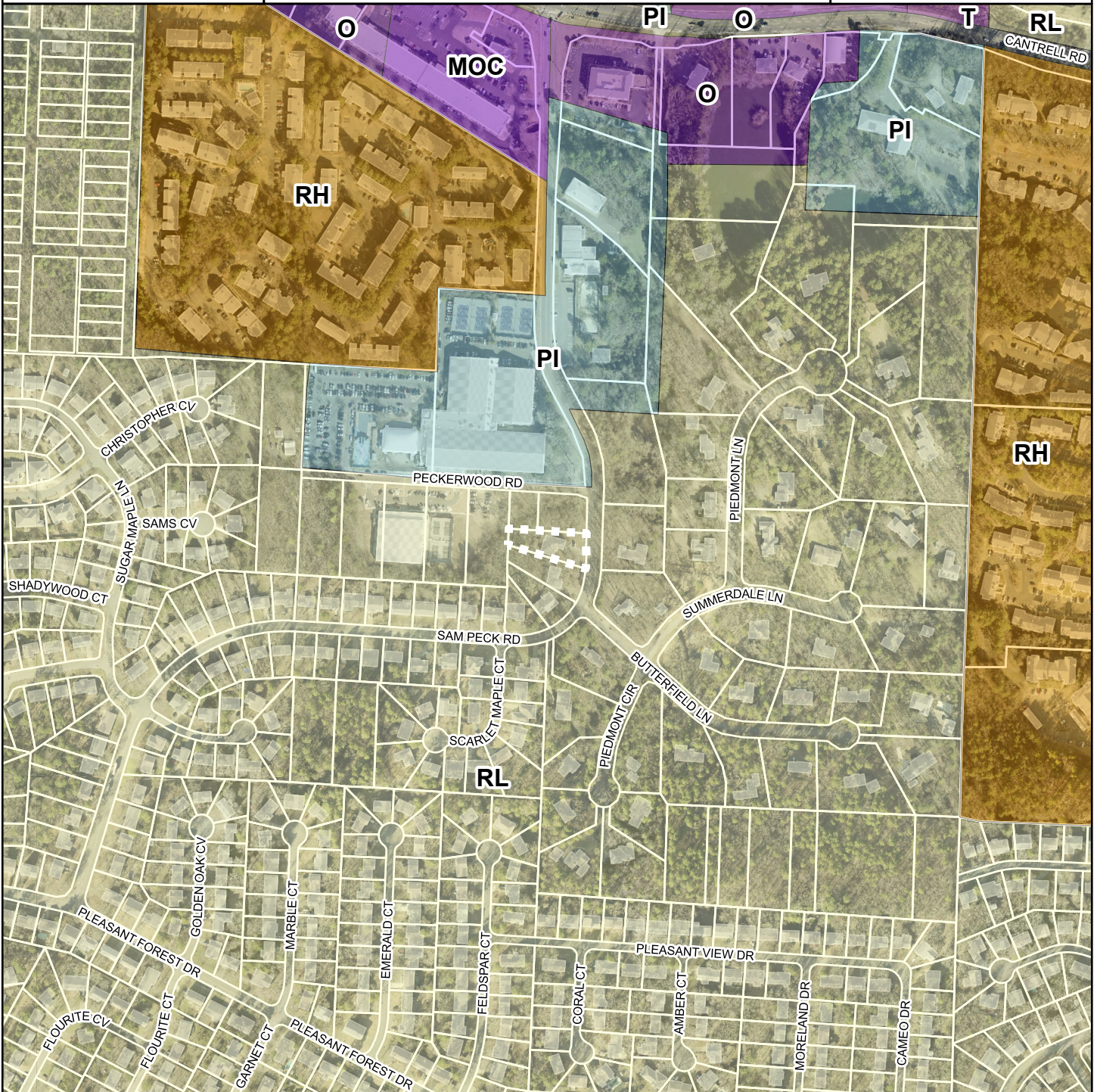


LU2026-01-01

LOCATED AT 4410 SAM PECK RD.

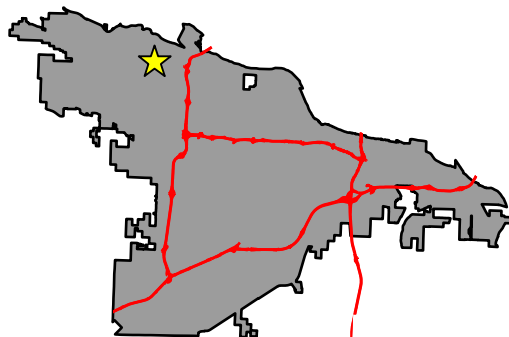
Planning Commission
MAY 14, 2026

Land Use



Legend

- Parcel Lines
- PUBLIC INSTITUTION
- RESIDENTIAL LOW DENSITY
- RESIDENTIAL HIGH DENSITY
- TRANSITION
- MIXED OFFICE AND COMMERCIAL
- OFFICE



DEPARTMENT OF
**PLANNING &
DEVELOPMENT**