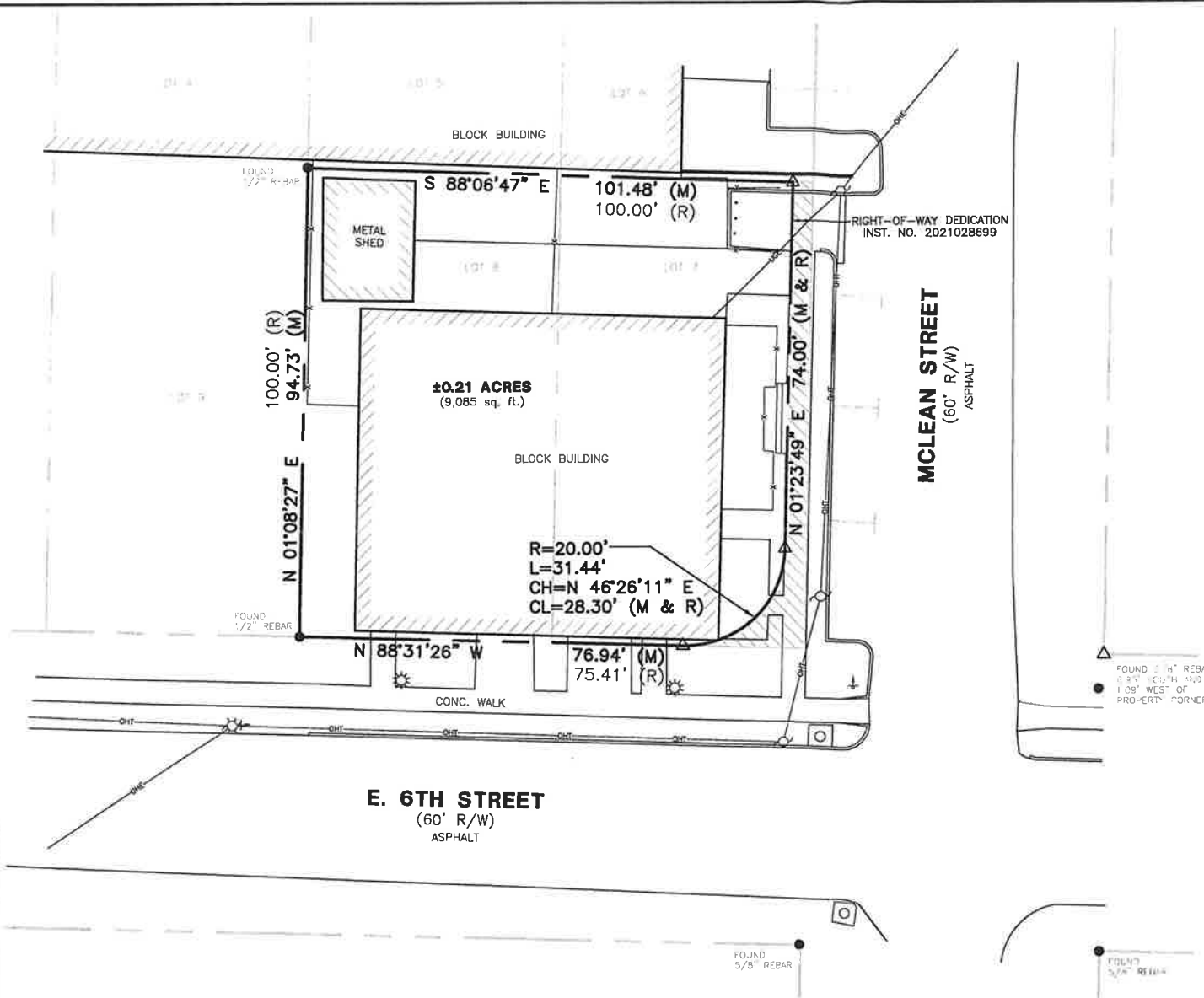


Z-9509-A



Description: Instrument No. 2020030922
 The South 100 feet of Lots 7 and 8, Block 14, Rectortown Addition to the City of Little Rock, Pulaski County, Arkansas.
 LESS & EXCEPT
 Right-of-Way Dedication filed for record as Instrument No. 2021028699, in the Pulaski County, Arkansas Courthouse.

LEGEND	
●	FOUND MONUMENT
○	SET 1/2" REBAR
△	COMPUTED POINT
⊕	FIRE HYDRANT
⊗	WATER VALVE
⊙	WATER METER
⊙	GAS METER
⊞	GAS VALVE
⊕	POWER POLE
⊕	POWER POLE W/ LIGHT
⊕	GUY WIRE
⊕	LIGHT POLE
⊞	TELEPHONE PEDESTAL
⊞	ELECTRIC METER
⊕	SANITARY SEWER MANHOLE
⊕	SIGN
(M)	MEASURED
(R)	RECORD
—WA—	WATER LINE
—GAS—	GAS LINE
—OHE—	OVERHEAD ELECTRIC
—UGT—	UNDERGROUND TELEPHONE
—UGE—	UNDERGROUND ELECTRIC

ZONING
 PID; Planned Industrial District

Certification

I, Todd A. Shettles certify that a Boundary Survey was performed on the Property shown hereon under my direct supervision and this drawing is an accurate representation of the Survey results. All property corners not found are set or calculated in accordance with existing found monuments in the area.

Todd A. Shettles
 Todd A. Shettles
 Professional Land Surveyor
 Arkansas No. 1527

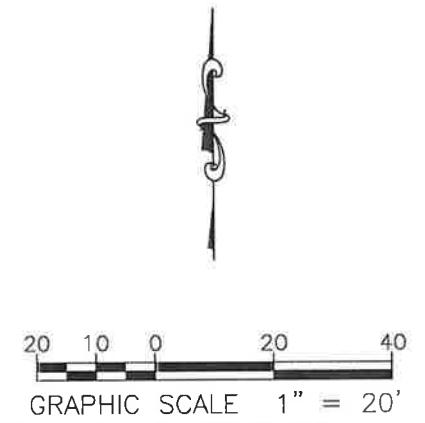
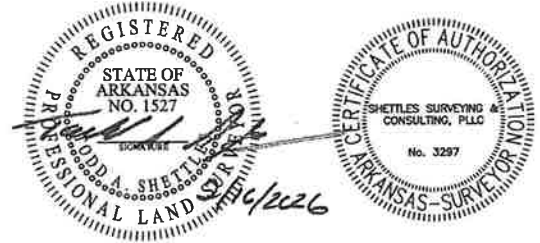
Date 2/16/2026

Rights of way and Easements are shown hereon as per documents provided to the surveyor. Additional Rights of way and Easements, recorded or not a part of the public record, may exist that affect the Subject Property.

The locations of utilities as shown hereon are based on aboveground structures and record documents. Locations of underground utilities may vary from locations shown hereon. Additional buried utilities/structures may be encountered. No excavations were made during the progress of the survey to locate buried utilities/structures.

Based on scaled map location and graphic plotting only, the property shown hereon is in Flood Zone X, which is not in the designated 100 Year Floodplain according to Flood Insurance Rate Map, Pulaski County, Arkansas and Incorporated Areas, Community Panel Number 05119C0457G, Map Revised July 6, 2015.

Bearings are based on Grid North NAD83 (2011), State Plane Coordinates Arkansas North Zone (301) as per GPS observation.



SHETTLES SURVEYING & CONSULTING, PLLC
 PO Box 20161, Little Rock, AR 72211
 (501) 785-6186
 LICENSED PROFESSIONAL SURVEYOR
 CONSTRUCTION PLANS AND ELEVATION CERTIFICATES

COPYRIGHT 2026
 SCALE 1" = 20'
 DRAWN BY: TAS
 CHECKED BY:
 APPROVED BY: TAS
 DATE: 2/13/2026

REVISIONS:

PROJECT TITLE: 1020 E. 6TH STREET, LITTLE ROCK, ARKANSAS
 SHEET TITLE: BOUNDARY SURVEY

PROJECT NO. 26-104
 SHEET NO. B-1