



# WAR MEMORIAL PARK

aerials



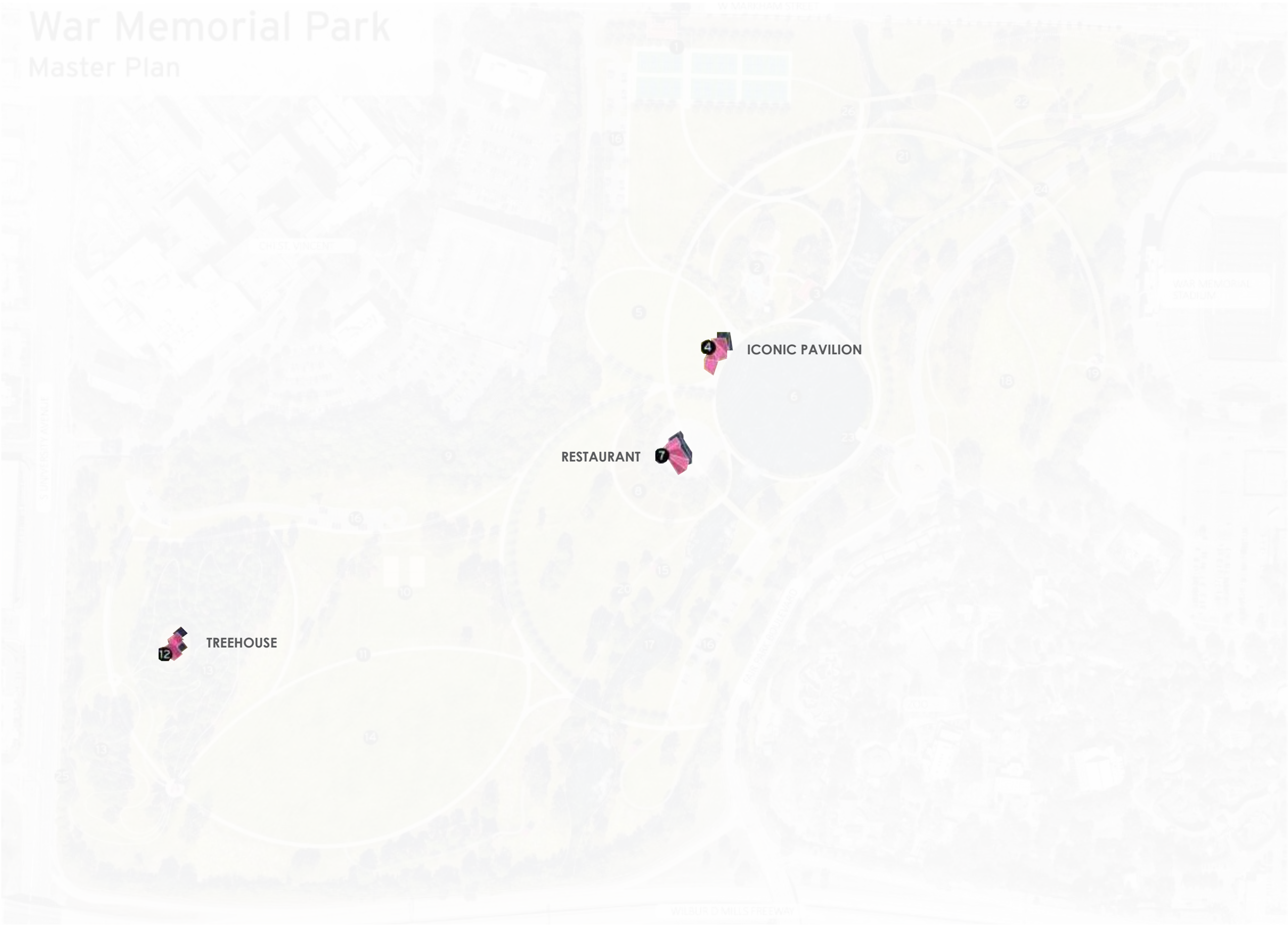
site images



master plan by EDG



focus elements



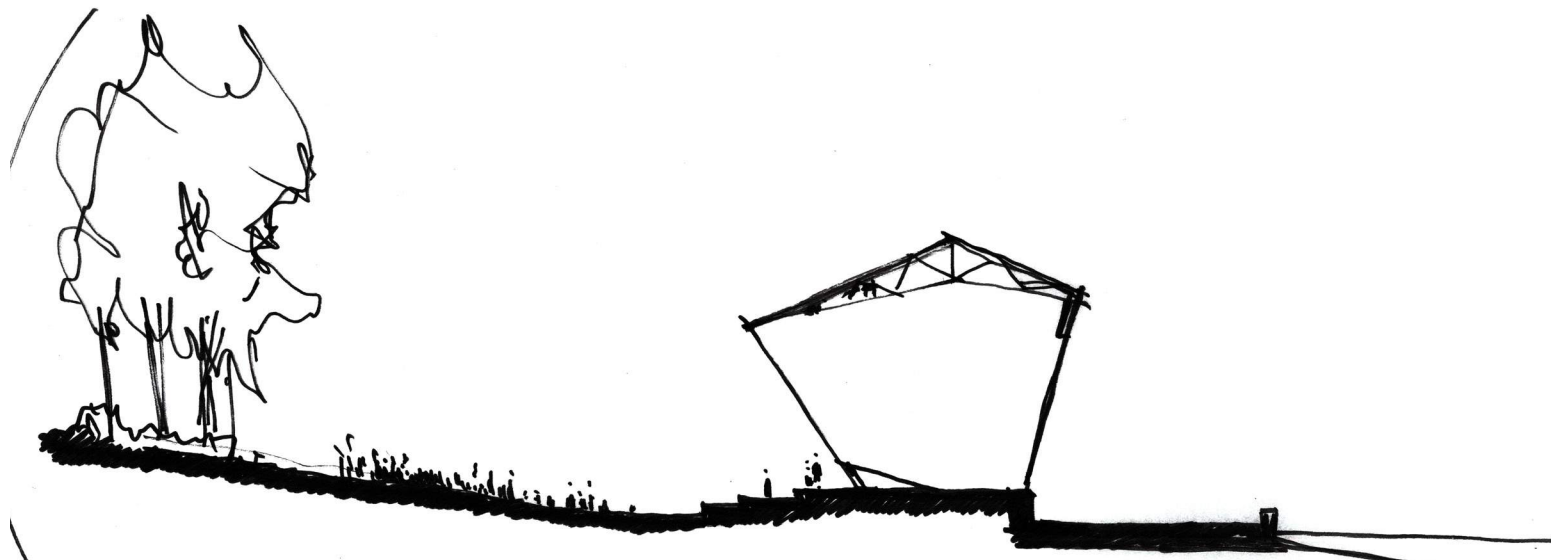
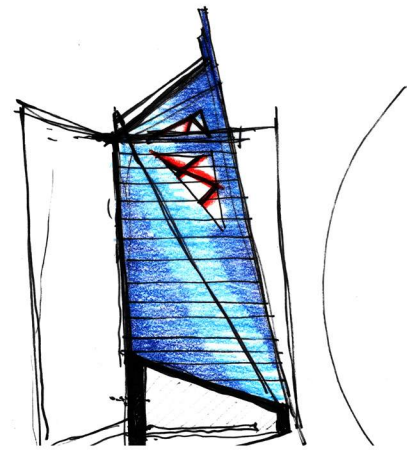
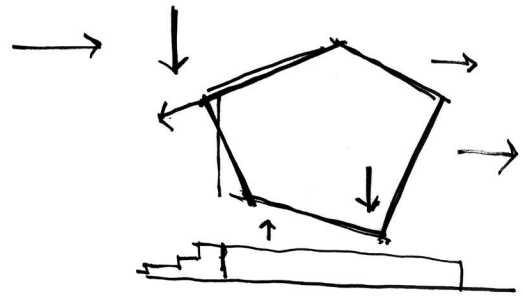
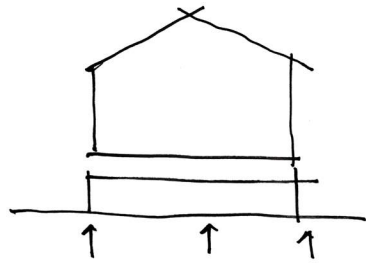
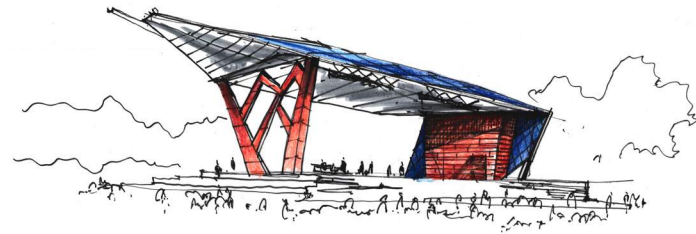
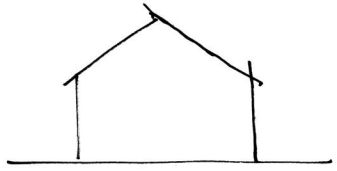
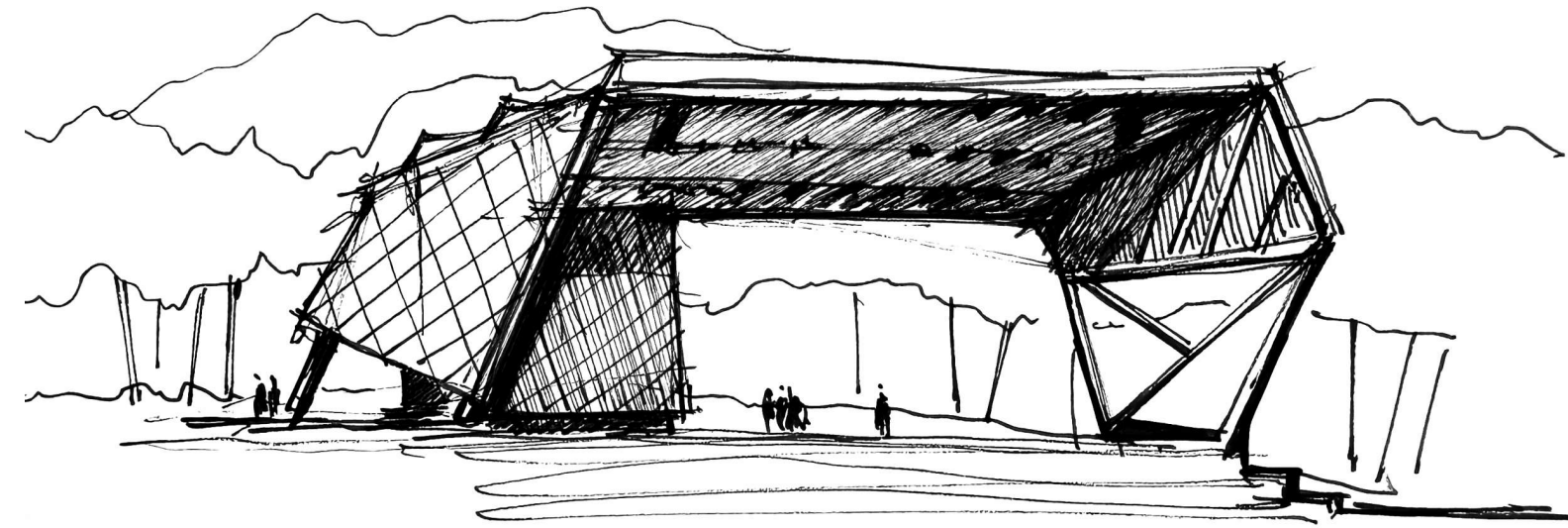
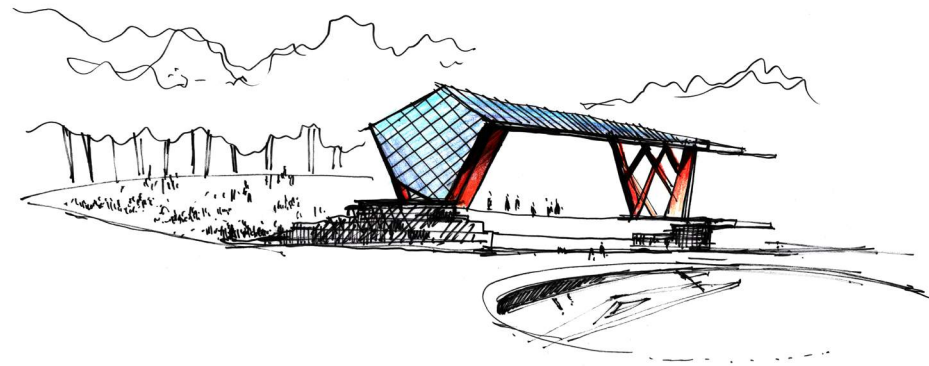
Program

- 1 PICKLEBALL COURTS + CLUBHOUSE
- 2 SPLASH PAD + PLAYGROUND
- 3 TRAIL ZONE + RESTROOM
- 4 ICONIC PAVILION
- 5 RECREATED LAWN
- 6 FORD
- 7 RESTAURANT
- 8 URBAN FARM
- 9 FOOD FOREST
- 10 FLEXIBLE COMMUNITY FIELD + SAND VOLLEYBALL
- 11 WALKING PATHS
- 12 TREEHOUSE
- 13 MOUNTAIN BIKE DOWNHILL AREA
- 14 OPEN LAWN SPACE
- 15 SMALL PAVILIONS
- 16 PARKING
- 17 STREAM RESTORATION
- 18 POLLINATOR MEADOW
- 19 OVERLOOK PAVILION
- 20 EXISTING PATHS
- 21 WETLAND SEDIMENT FORESHORE
- 22 DOG PARK
- 23 FISHING PIER
- 24 PEDESTRIAN FLYOVER BRIDGE
- 25 TRUCKS GREENWAY CONVICTION
- 26 PLOT

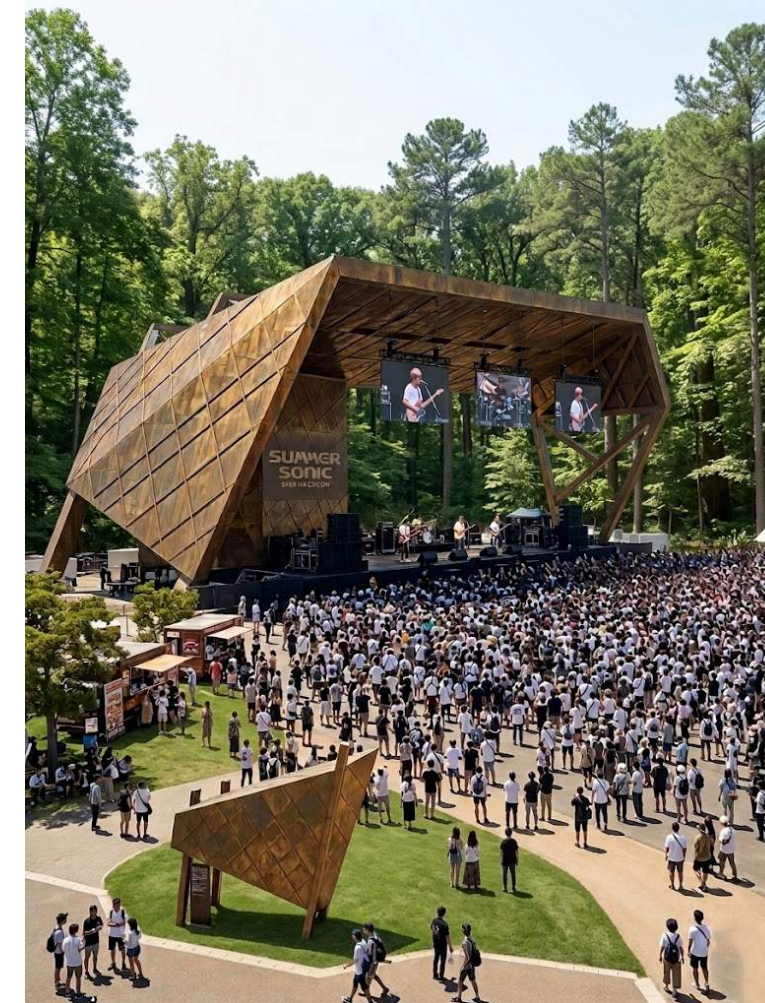


E | D | G

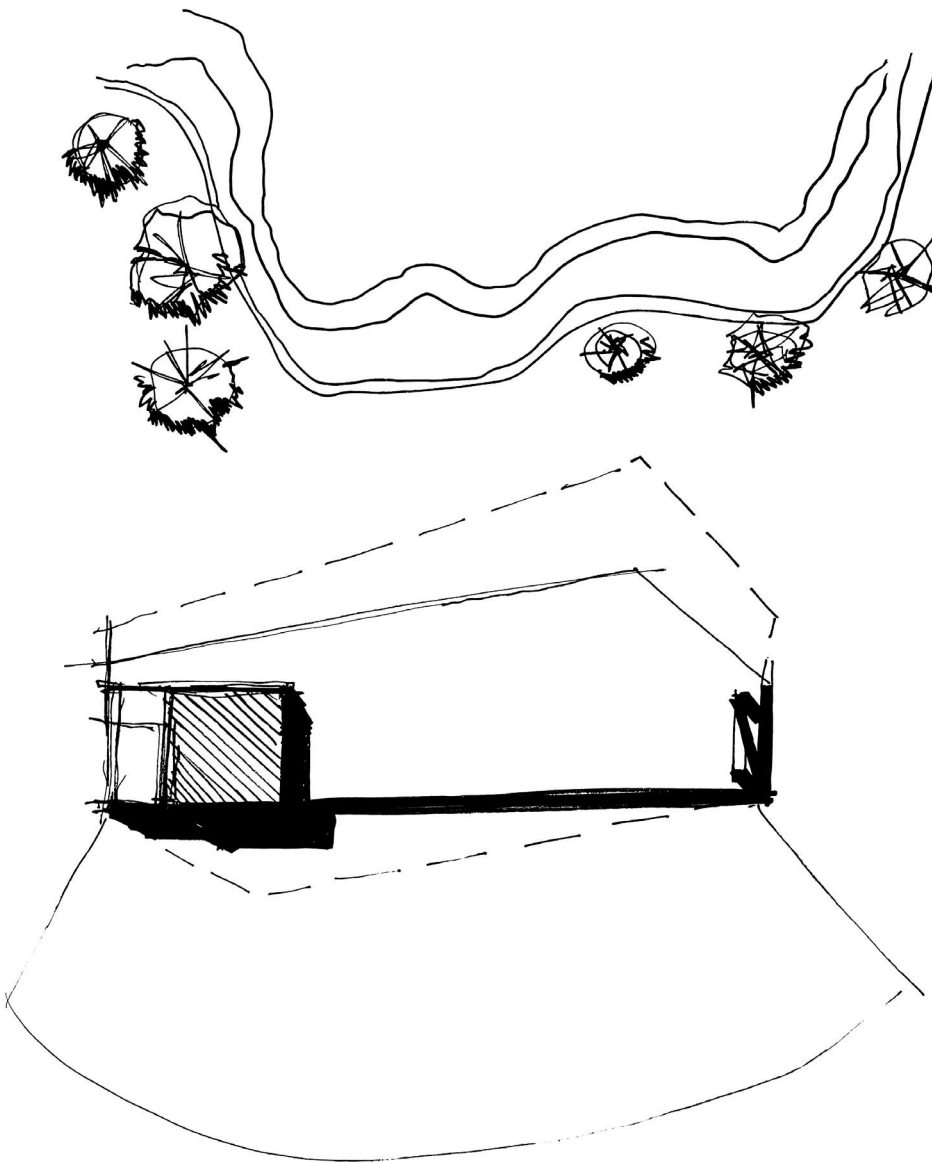
#4 - iconic pavilion



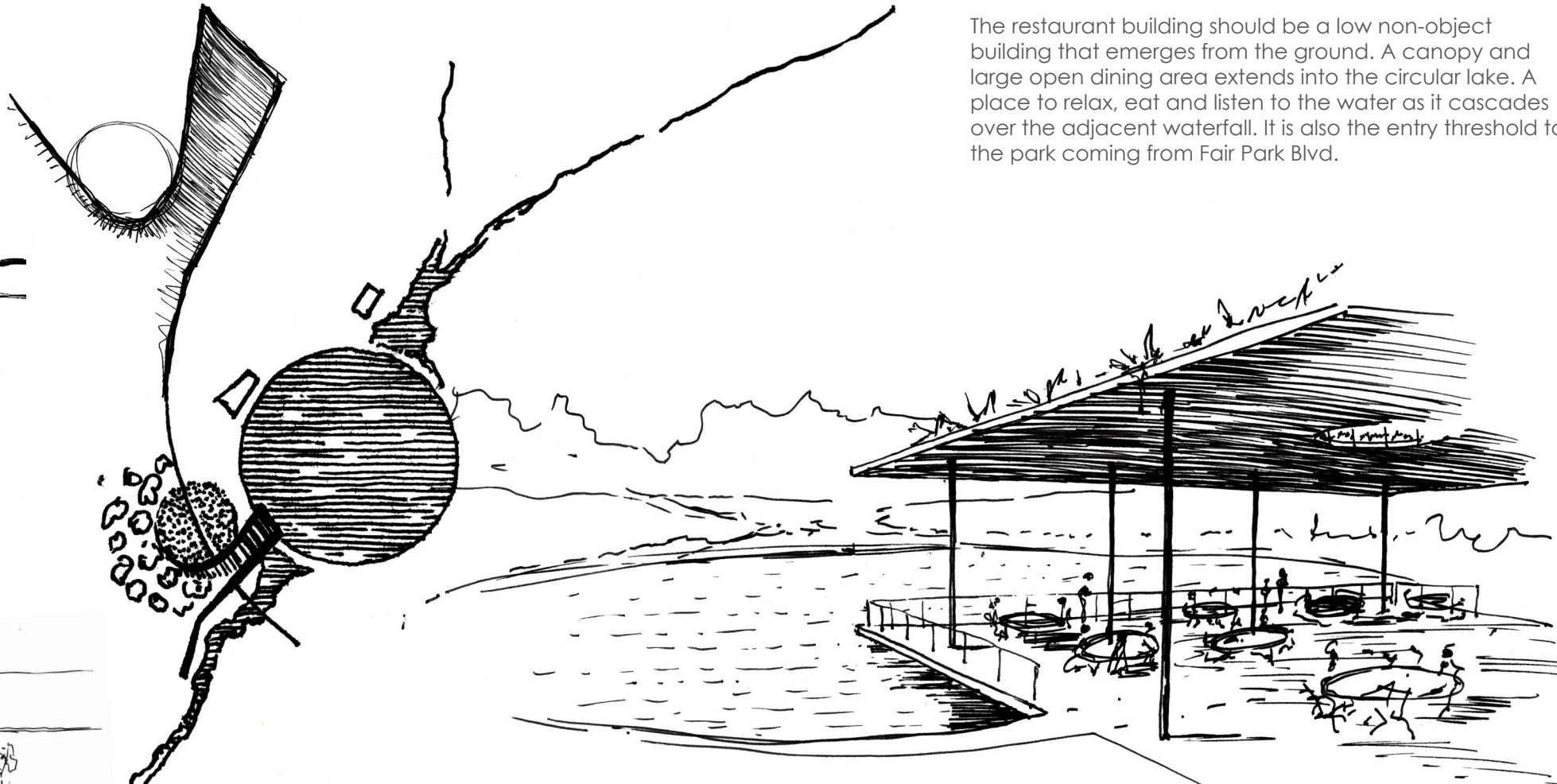
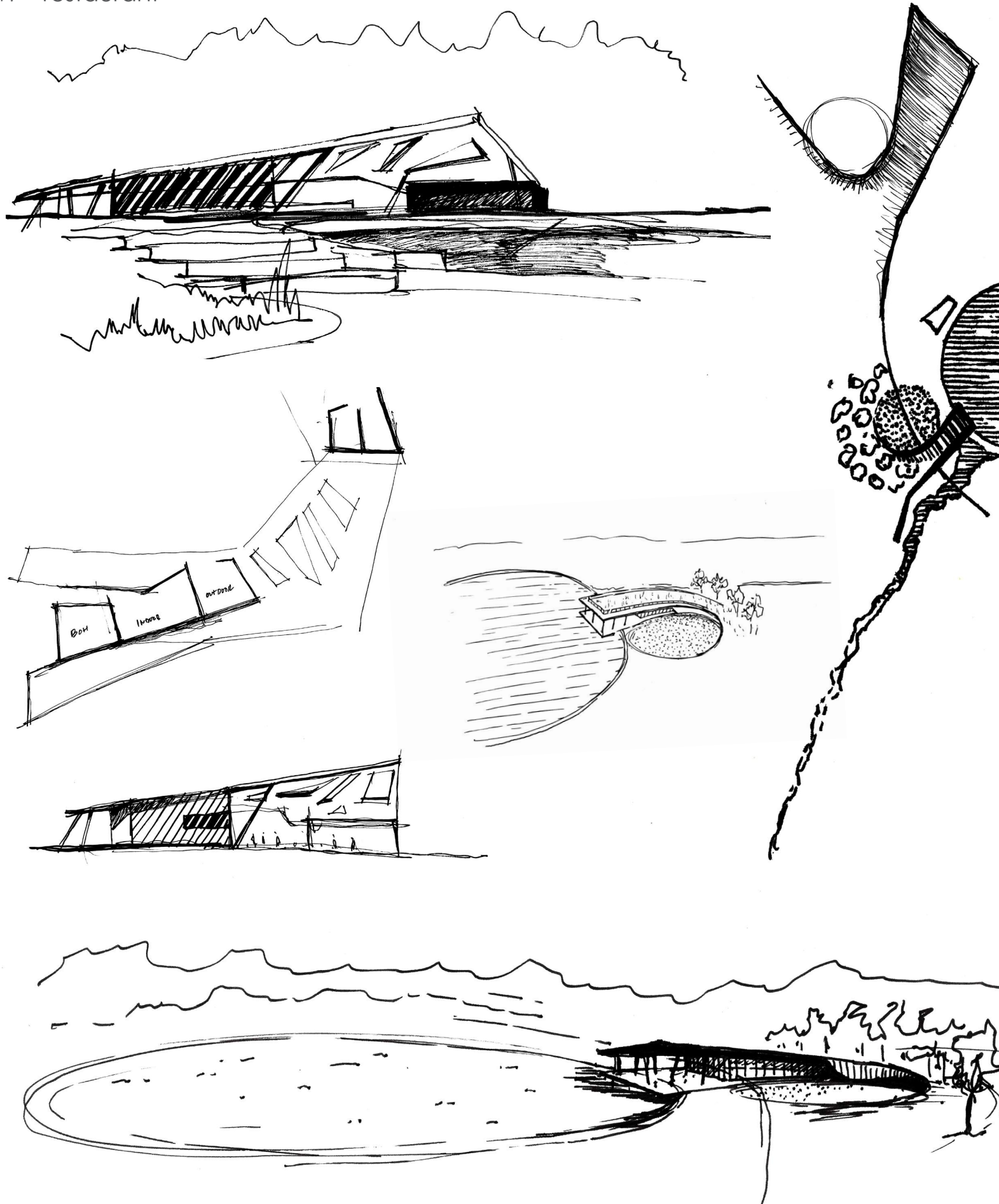
The iconic pavilion has a commanding presence, anchoring the large expanse of the great lawn. Its large scale is suited to large gatherings and events in the park.



#4 - iconic pavilion



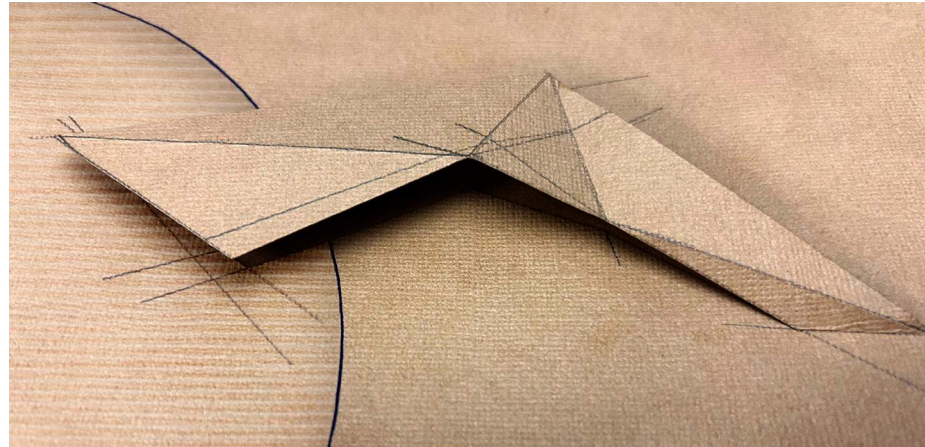
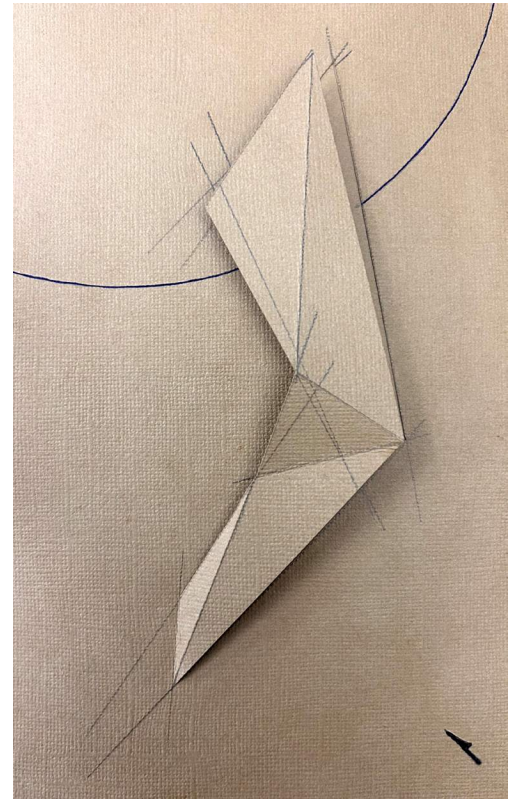
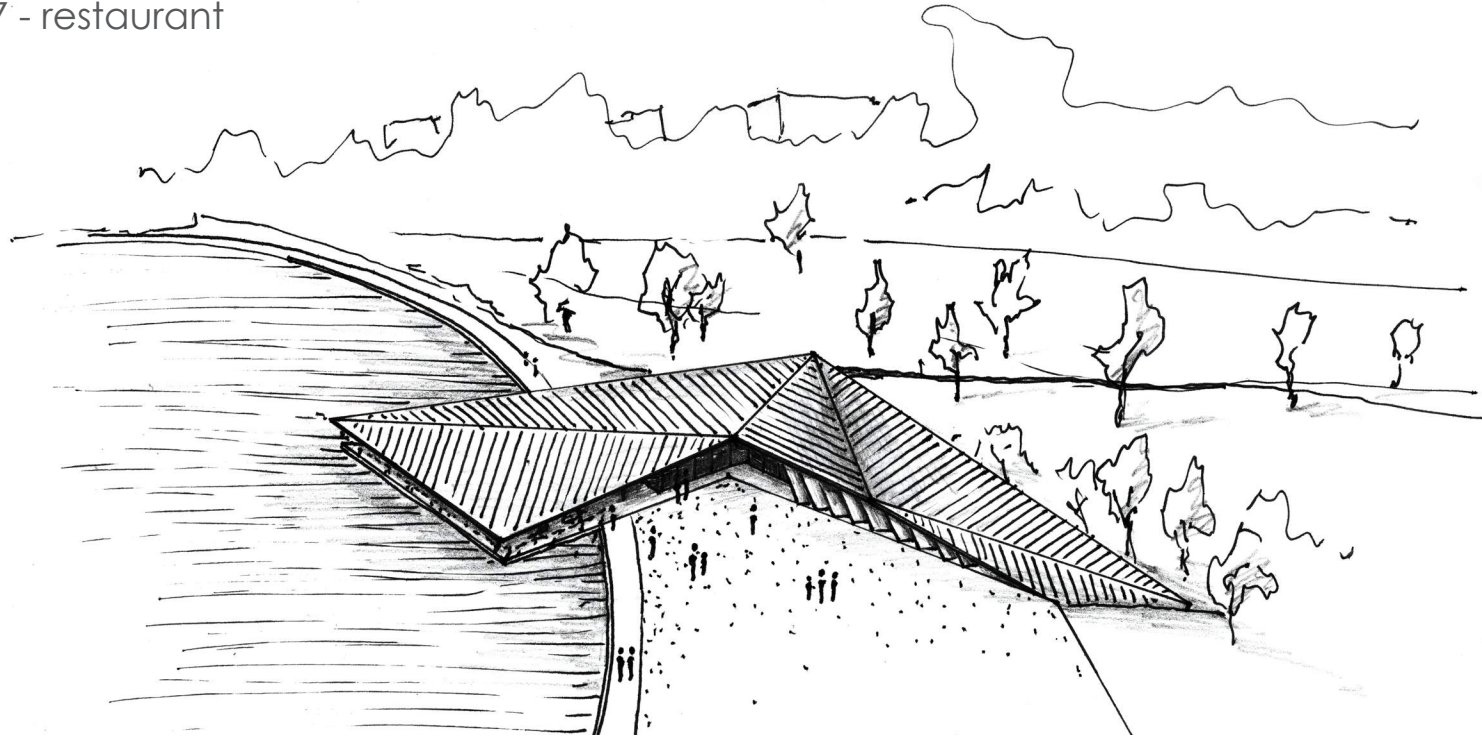
#7 - restaurant



The restaurant building should be a low non-object building that emerges from the ground. A canopy and large open dining area extends into the circular lake. A place to relax, eat and listen to the water as it cascades over the adjacent waterfall. It is also the entry threshold to the park coming from Fair Park Blvd.



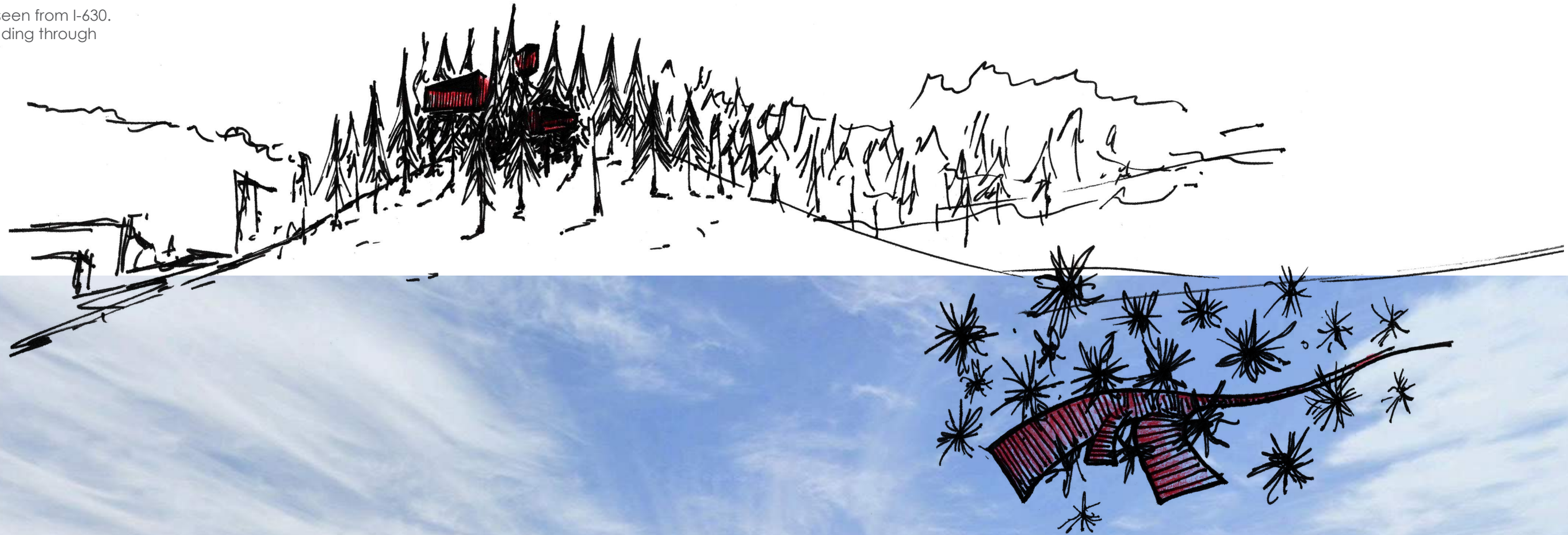
#7 - restaurant



War Memorial Park : Little Rock, Arkansas

#12 - treehouse

The "treehouse" amenity as seen from I-630.  
A series of view portals protruding through  
the canopy of pine trees



# War Memorial Park : Little Rock, Arkansas

## #12 - treehouse

The "treehouse" amenity is an extension of the trail system. The walkway gradually rises above the ground and meanders through the grove of pine trees at the highest point in the park. The walkway terminates in three different portals, each a different elevation and each framing a different view of the city.

One portal is a gathering place for a larger group of people, large family picnics, corporate leadership meetings or just a place to sit and enjoy the view. The second portal is a vertical proportion, only accommodating three to four people at a time, a destination for a solitary lunch time walk, a place for proposals, an intimate space. The third portal is lower to the ground and a medium size, big enough for a family to eat lunch in the park with excellent views of the park and city beyond.



# War Memorial Park : Little Rock, Arkansas

## #12 - treehouse

exploring phenomenal transparency through the pines.

