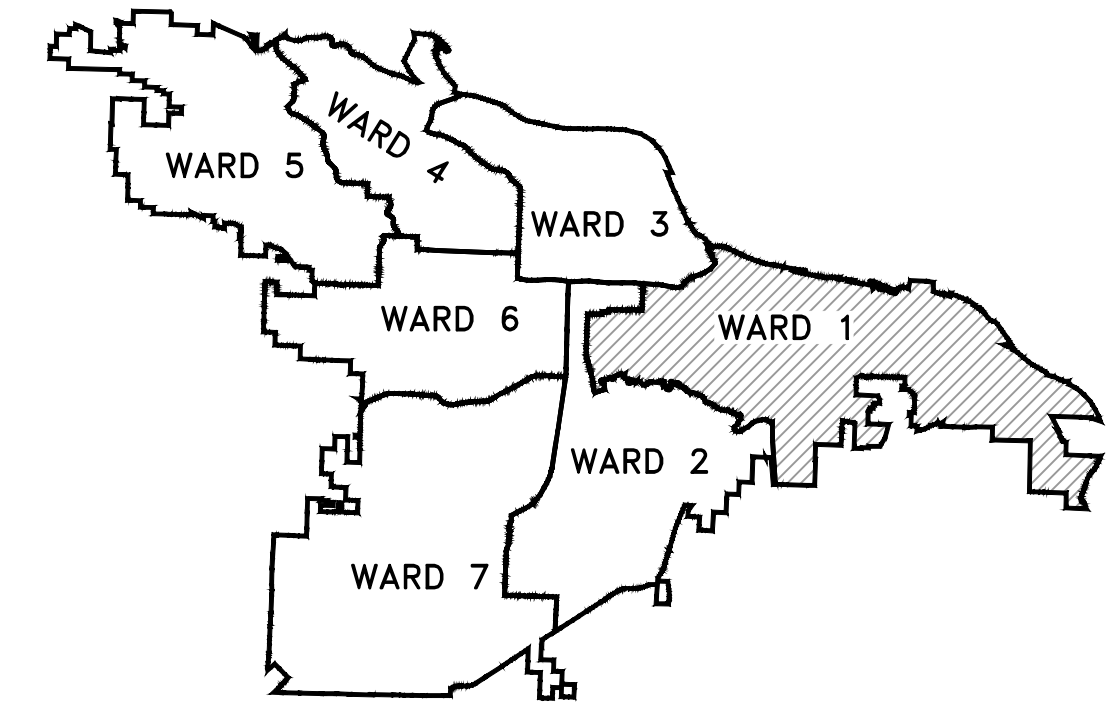
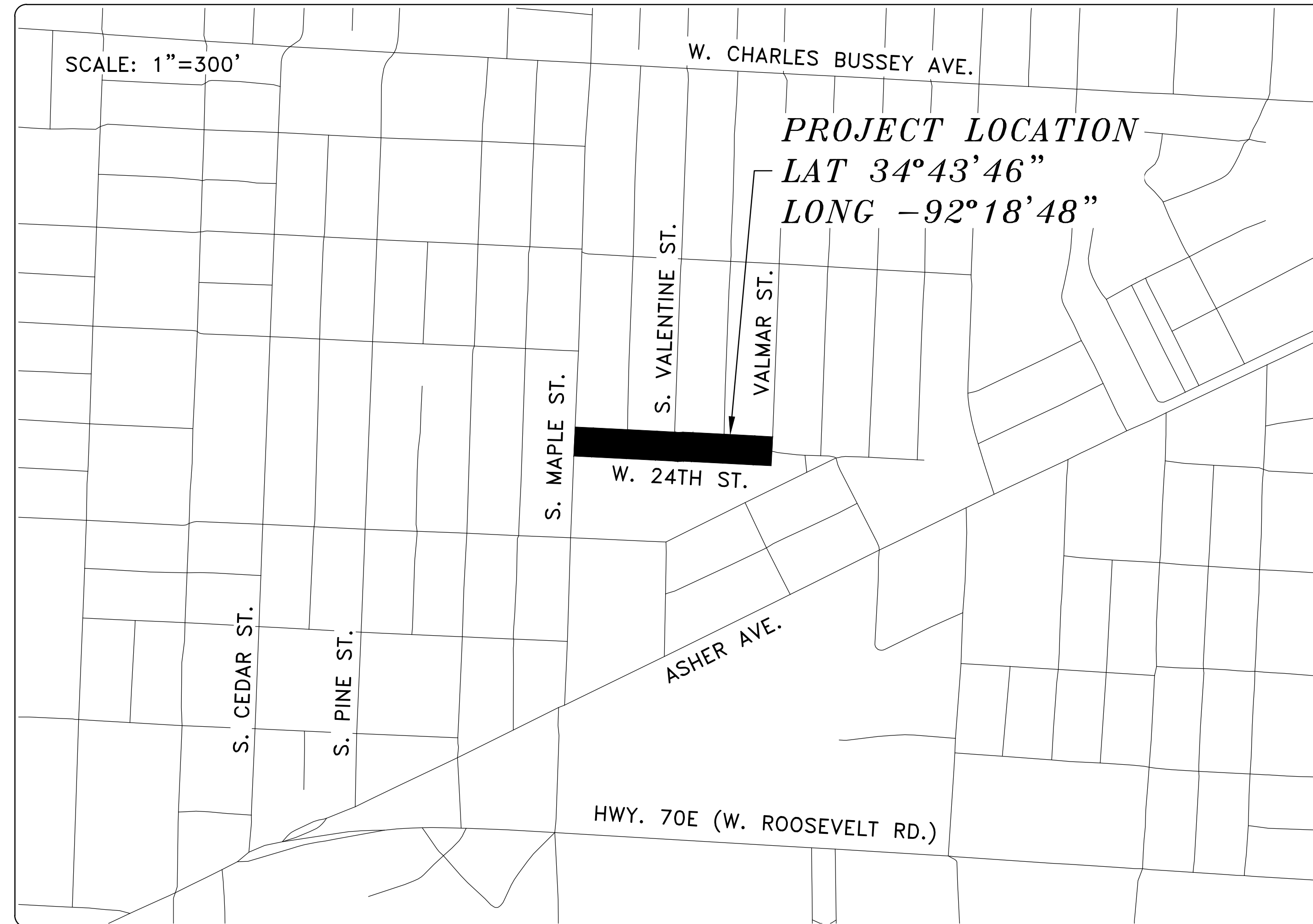
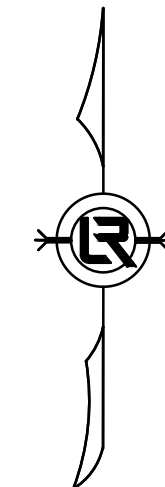
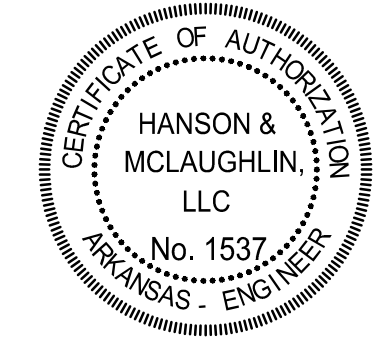


W. 24TH ST. VALMAR ST. TO VALENTINE ST.



PROJECT LOCATION - WARD 1


SHEET NO.	TITLE
C1	COVER SHEET
C2	LEGEND AND QUANTITIES
C3	TYPICAL SECTIONS
C4	EXISTING CONDITIONS
C5	PLAN AND PROFILE
C6	PLAN AND PROFILE
C7	DRIVEWAY PLANS
C8	CROSS SECTIONS
C9	SURVEY CONTROL PLAN
C10	EROSION CONTROL PHASE 1
C11	EROSION CONTROL PHASE 2
C12	EROSION CONTROL PHASE 3



REVISIONS	DATE

W. 24TH ST. VALMAR ST. TO VALENTINE ST.
CITY OF LITTLE ROCK, ARKANSAS
COVER SHEET

DEPARTMENT OF PUBLIC WORKS
CIVIL ENGINEERING
701 W. MARKHAM
LITTLE ROCK, ARKANSAS 72201




DEPARTMENT OF PUBLIC WORKS
CIVIL ENGINEERING
701 WEST MARKHAM STREET
LITTLE ROCK, ARKANSAS 72201

HANSON & MCLAUGHLIN, LLC
320 EXECUTIVE COURT, SUITE 202
LITTLE ROCK, ARKANSAS 72205
(501) 716-2850

DRAWN BY	KMH
DESIGNED	KMH
CHECKED	FJS
DATE	01-17-2025
SCALE	N.T.S.
PROJECT NO.	01-17-ST-41
SHEET NO.	C1

CLR PROJECT 01-17-ST-41
W. 24TH ST. VALMAR ST. TO VALENTINE ST.
JANUARY 17, 2025

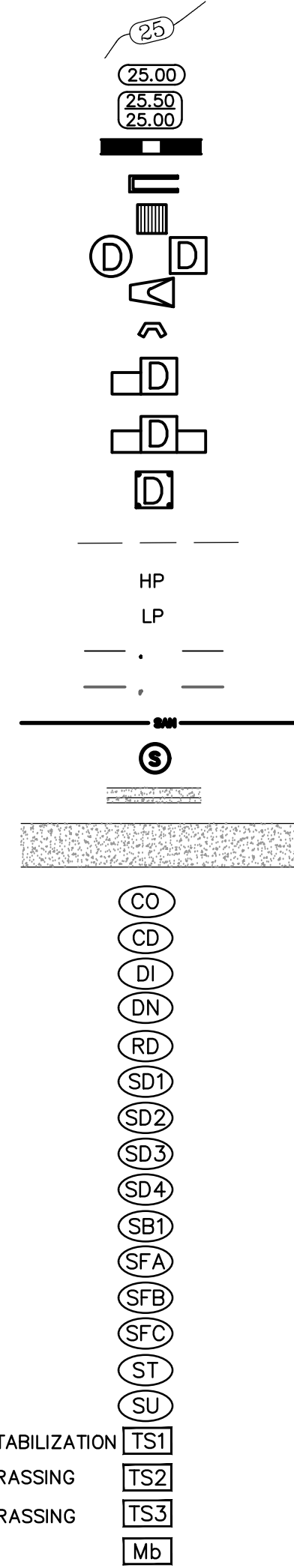
ITEM #	ITEM DESCRIPTION	UNIT	QUANTITY
2.01	Site Preparation (Incl. Mobilization)	LS	1
3.01	Unclassified Excavation	CY	298
3.06	Borrow Material	CY	174
4.01	Aggregate Base Course	TON	270
5.01	Tack Coat	GAL	53
6.01	ACHM Surface Course	TON	143
7.04	Concrete Driveway (6" Thick), Standard Finish	SF	551
7.08	Alley Turnout (8" Thick)	SF	178
8.03	Concrete Curb and Gutter (Class 3)	LF	920
9.04	Concrete Sidewalk (4" Thick)	SF	497
10.04	Curb Inlet - 4' Box	EA	1
10.04	Curb Inlet - 6'x4' Box	EA	2
10.07	Wing 3' Extension	EA	3
10.80	Rebuild Inlet Top	EA	2
13.61	Tie Into Existing Curb Inlet	EA	1
13.18C	Storm Drain Pipes, 18", Cross Drain	LF	25
13.18A	Storm Drain Pipes, 18"x12" Arch Pipe Side Drain	LF	128
14.01	Solid Sodding (Bermuda) Includes 4" Topsoil	SY	511
16.01	Maintenance of Traffic	LS	1
17.01	Pavement Repairs	SY	30
18.50	Access Ramp	SF	452
18.55	Water for Dust Control	GAL	10,000
19.01	Final Clean-Up	LS	1
22.10	Mailbox Relocation	EA	1
23.01	B Stone	TON	100
24.01	Construction Entrance (CO)	EA	2
24.06	Sediment Barrier, Silt Fence (SD1)	EA	5
24.09	Sediment Barrier, Block (SD4)	EA	5
24.11	Silt Fence - Type A (SFA)	LF	908
24.18	Disturbed Area Stabilization - Permanent Grassing (TS3)	AC	0.10
25.04	Fence Chain Link (4')	LF	70
25.16	Fence Wood (6')	LF	95
26.10	Trench & Excavation Safety	LS	1
27.10	Cold Milling Asphalt Pavement	SY	53
30.01	Remove Existing Sign	EA	4
30.02	Relocate Existing Sign	EA	2
719.12W	Thermoplastic Pavement Marking White (12")	LF	80
SP	As-Built Survey	LS	1

EXISTING

- IRON ROD ○ IR
- PK NAIL ○ PK
- R.R. SPIKE ○ RR(Sp)
- CONC. MONUMENT □ CM
- WATER VALVE X WV
- WATER METER □ WM
- FIRE HYDRANT □ FH
- GAS METER □ GM
- GAS VALVE ⊗ GV
- CLEAN-OUT ○ CO
- GUARD POST (BOLLARD) ● GP
- SIGN POST
- BENCHMARK
- STORM SEWER MANHOLE (D)
- SANITARY SEWER MANHOLE (S)
- TELEPHONE MANHOLE (T)
- ELECTRIC MANHOLE (E)
- TELEPHONE BOX (TB)
- ELECTRIC BOX (EB)
- CABLE BOX (CB)
- UTILITY POLE (UP)
- GUY WIRE (GW)
- LIGHT POLE (LP)
- POST OR POLE (TYPE AS NOTED)
- MAILBOX (MB)
- DECIDUOUS TREE (DT)
- EVERGREEN/CONIFEROUS TREE (ET)
- BUSH (BT)
- PROPERTY LINE (---)
- SETBACK LINE (---)
- EASEMENT LINE (---)
- CURB (---)
- FENCE (--- X --- X ---)
- OVERHEAD UTILITY (---)
- UNDERGROUND TELEPHONE (---)
- UNDERGROUND ELECTRIC (---)
- WATER LINE (---)
- SEWER LINE (--- SAN ---)
- GAS LINE (---)
- STORM SEWER/CULVERT (--- 24" CMP/RCP/DIP ---)
- CONTOUR LINE (--- 650 ---)

PROPOSED

- CONTOUR (25)
- SPOT ELEVATION (25.00, 25.50, 25.00)
- SPOT CURB ELEVATION
- STORM SEWER - PIPE
- STORM SEWER - MITERED END SECTION
- STORM SEWER - GRATE INLET
- STORM SEWER - JUNCTION BOX
- STORM SEWER - FLARED END SECTION
- STORM SEWER - HEADWALL
- STORM SEWER - INLET WITH SINGLE EXTENSION
- STORM SEWER - INLET WITH DOUBLE EXTENSION
- STORM SEWER - AREA INLET
- GRADE BREAK LINE
- HIGH POINT (HP)
- LOW POINT (LP)
- CUT LINE
- FILL LINE
- SANITARY SEWER PIPE
- SANITARY SEWER MANHOLE
- CURB
- CONCRETE
- CONSTRUCTION - ENTRANCE/EXIT
- CHECK DAM
- DIVERSION BERM
- DOWNDRAIN STRUCTURE - TEMPORARY
- ROCK DAM
- SEDIMENT BARRIER - SILT FENCE
- SEDIMENT BARRIER - GRAVEL RING
- SEDIMENT BARRIER - BLOCK & GRAVEL
- SEDIMENT BARRIER - BLOCK
- TEMPORARY SEDIMENT BASIN
- SILT FENCE - TYPE A
- SILT FENCE - TYPE B
- SILT FENCE - TYPE C
- STORM DRAIN OUTLET PROTECTION
- SURFACE ROUGHENING
- DISTURBED AREA STABILIZATION - TEMPORARY STABILIZATION (TS1)
- DISTURBED AREA STABILIZATION - TEMPORARY GRASSING (TS2)
- DISTURBED AREA STABILIZATION - PERMANENT GRASSING (TS3)
- MATTING/BLANKETS (Mb)



REVISIONS	DATE

W. 24TH ST. VALMAR ST. TO VALENTINE ST.
CITY OF LITTLE ROCK, ARKANSAS
LEGEND AND QUANTITIES

DEPARTMENT OF PUBLIC WORKS
CIVIL ENGINEERING
701 W. MARKHAM
LITTLE ROCK, ARKANSAS 72201



DRAWN BY
KMH
DESIGNED
KMH
CHECKED
FJS
DATE
01-17-2025
SCALE
N.T.S.
PROJECT NO.
01-17-ST-41
SHEET NO.
C2

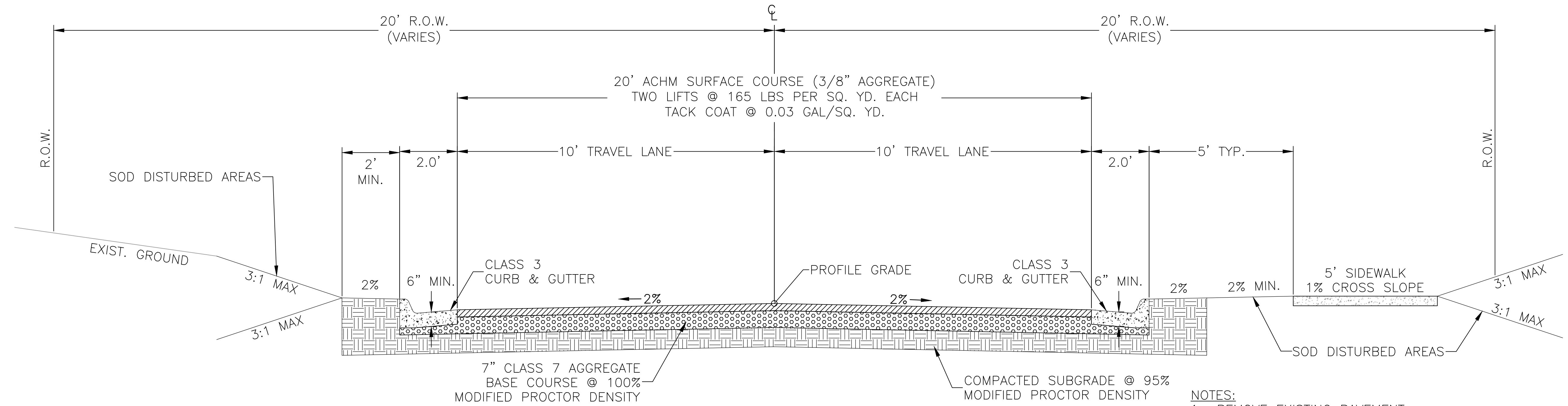
REVISIONS	DATE

W. 24TH ST. VALMAR ST. TO VALENTINE ST.
CITY OF LITTLE ROCK, ARKANSAS
TYPICAL SECTIONS

DEPARTMENT OF PUBLIC WORKS
CIVIL ENGINEERING
701 W. MARKHAM
LITTLE ROCK, ARKANSAS 72201



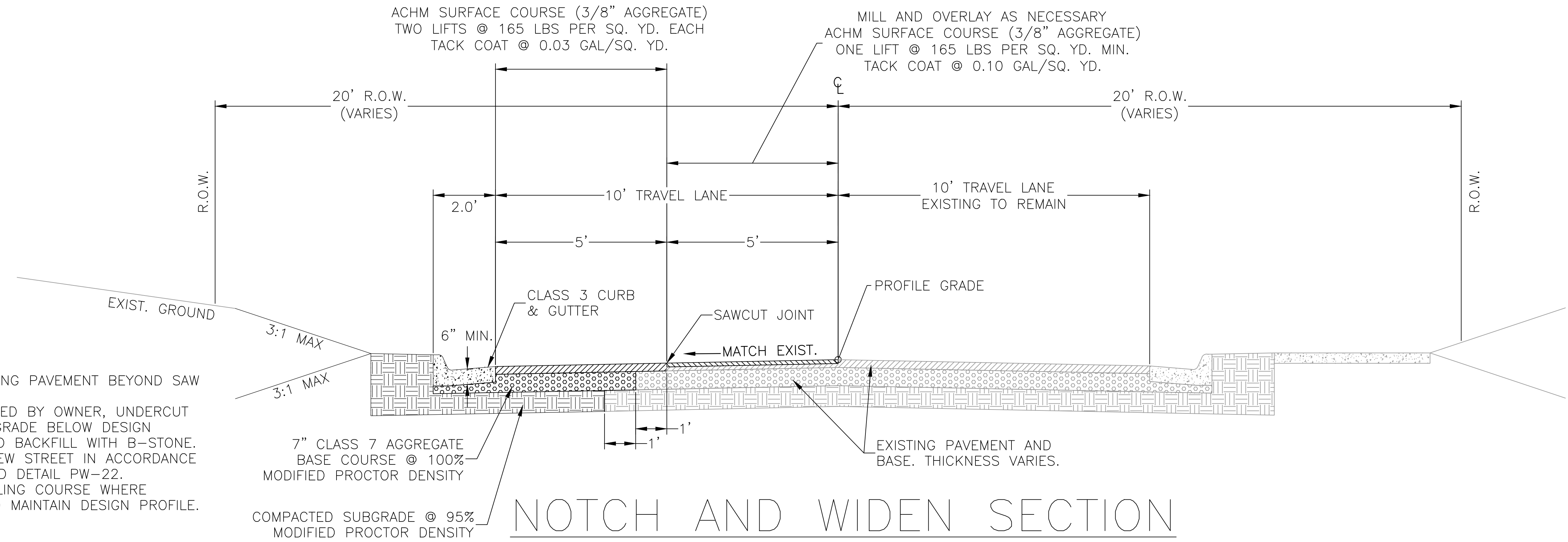
DRAWN BY
KMH
DESIGNED
KMH
CHECKED
FJS
DATE
01-17-2025
SCALE
N.T.S.
PROJECT NO.
01-17-ST-41
SHEET NO.
C3



RECONSTRUCTION SECTION

STA 12+84 TO 13+36
 STA 15+25 TO STA 16+74

- NOTES:**
1. REMOVE EXISTING PAVEMENT.
 2. UNDERCUT EXISTING SUBGRADE TO 24" BELOW DESIGN SUBGRADE.
 3. BACKFILL WITH APPROVED BORROW IN 8" MAXIMUM LIFTS COMPACTED TO 95% MODIFIED PROCTOR.
 4. CONSTRUCT NEW STREET IN ACCORDANCE WITH STANDARD DETAIL PW-22.
 5. TRANSITION LANE CROSS SLOPE TO MATCH EXISTING CURBS FOR 50' UNLESS STATED OTHERWISE.



NOTCH AND WIDEN SECTION

STA 10+00 TO STA 12+84
 STA 13+36 TO 15+25

- NOTES:**
1. REMOVE EXISTING PAVEMENT BEYOND SAW CUT.
 2. WHERE DIRECTED BY OWNER, UNDERCUT EXISTING SUBGRADE BELOW DESIGN SUBGRADE AND BACKFILL WITH B-STONE.
 3. CONSTRUCT NEW STREET IN ACCORDANCE WITH STANDARD DETAIL PW-22.
 4. PROVIDE LEVELING COURSE WHERE NECESSARY TO MAINTAIN DESIGN PROFILE.

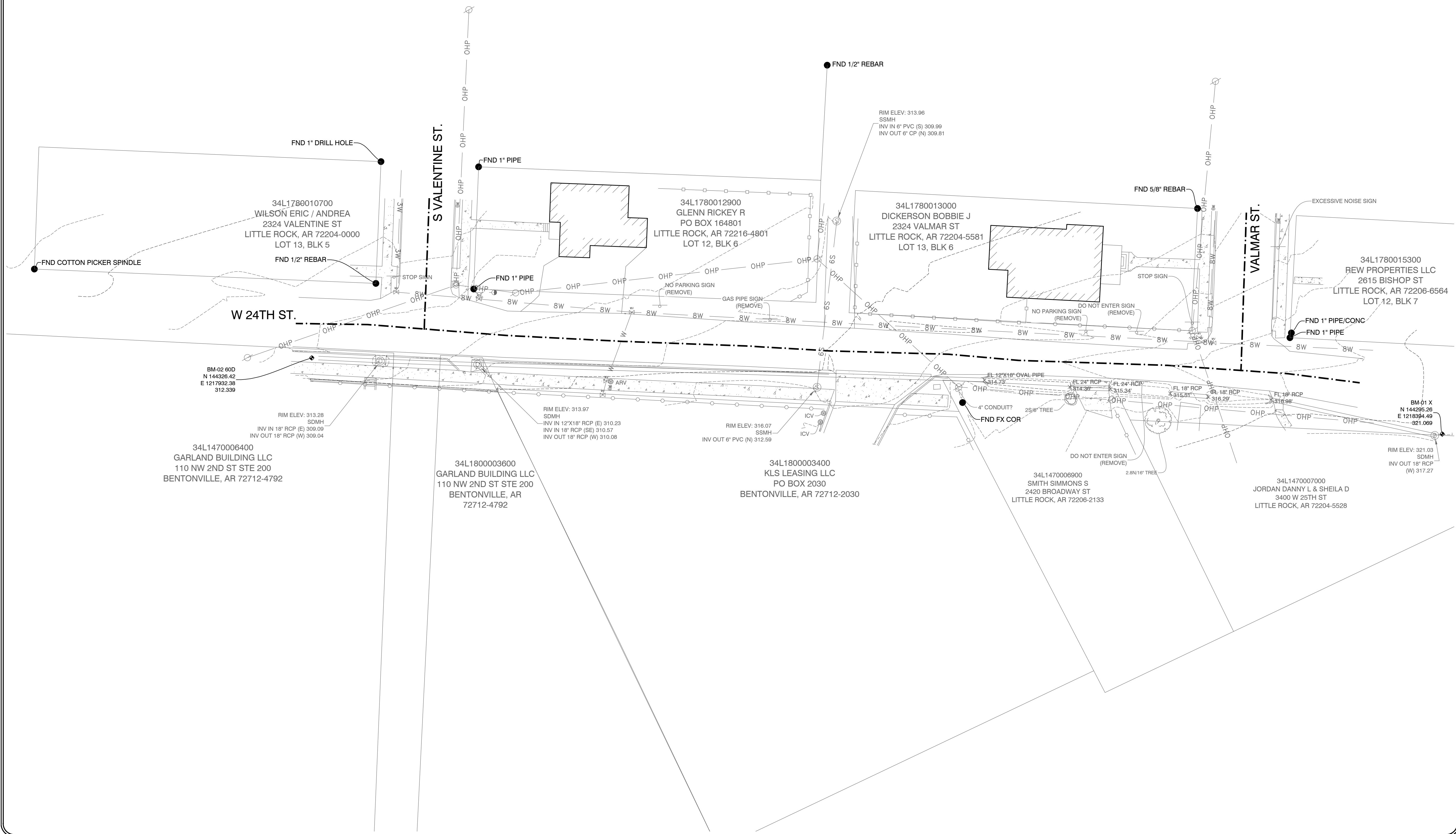
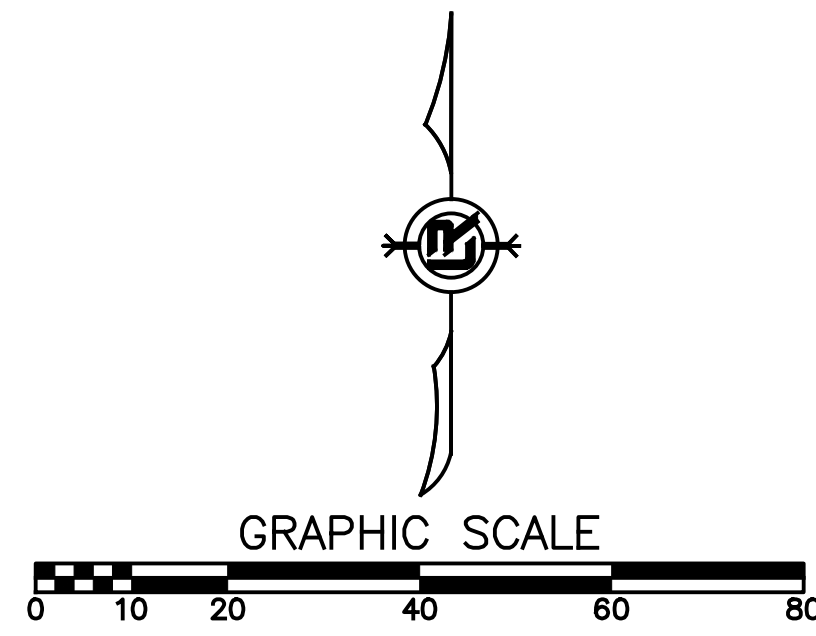
REVISIONS	DATE

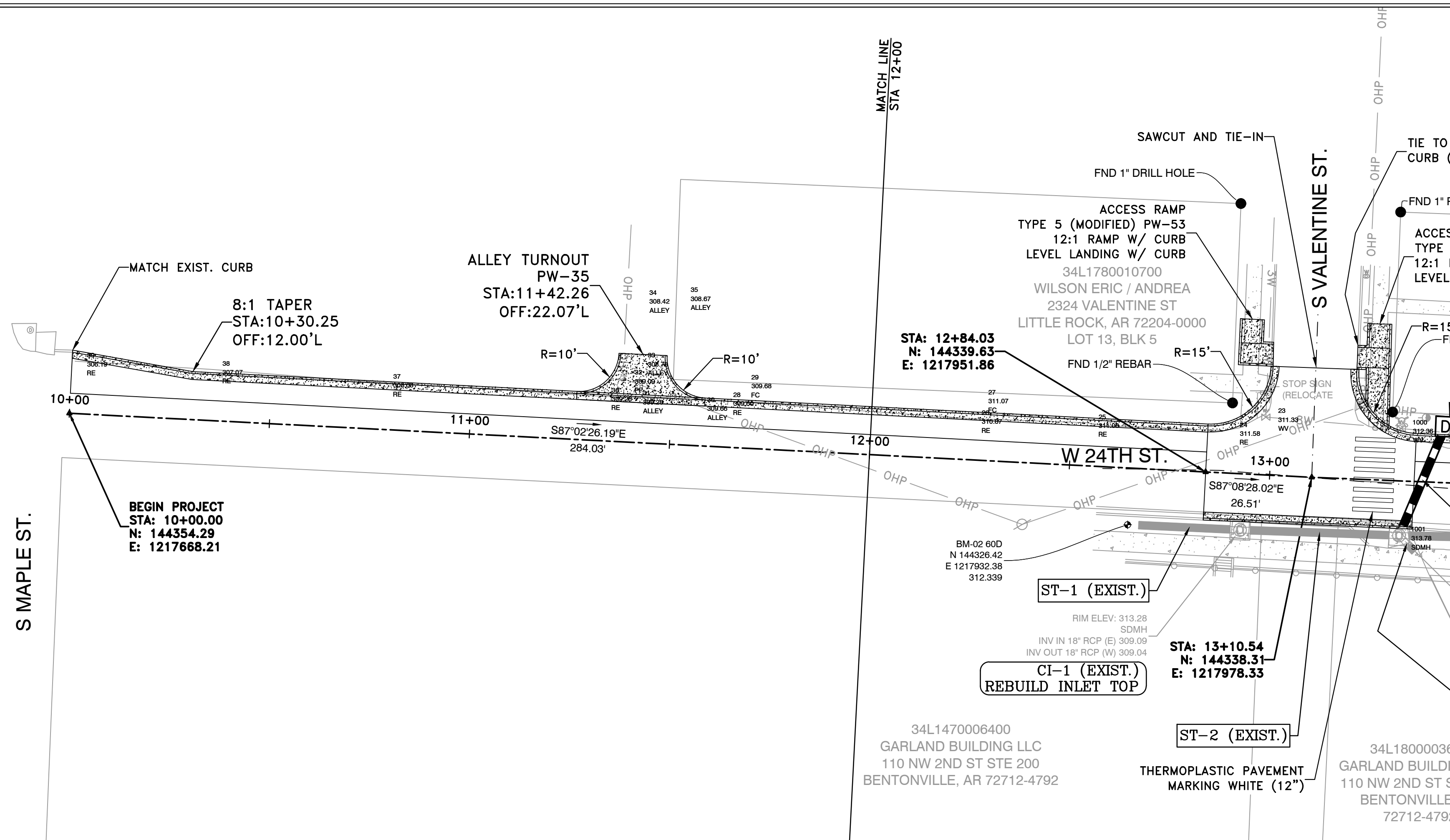
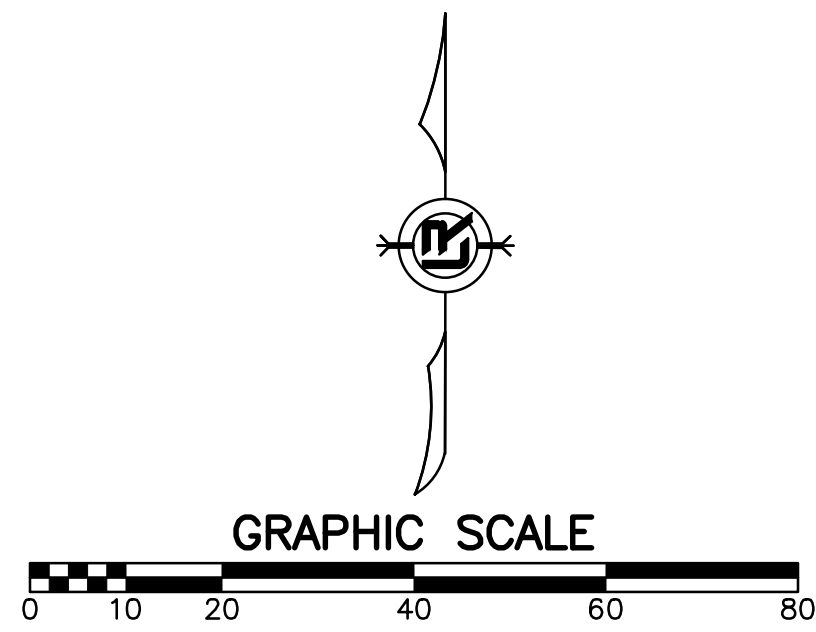
W. 24TH ST. VALMAR ST. TO VALENTINE ST.
 CITY OF LITTLE ROCK, ARKANSAS
 EXISTING CONDITIONS

DEPARTMENT OF PUBLIC WORKS
 CIVIL ENGINEERING
 701 W. MARKHAM
 LITTLE ROCK, ARKANSAS 72201



DRAWN BY
 KMH
 DESIGNED
 KMH
 CHECKED
 FJS
 DATE
 01-17-2025
 SCALE
 1"=20'
 PROJECT NO.
 01-17-ST-41
 SHEET NO.
 C4





PROFILE DATA NOT AVAILABLE

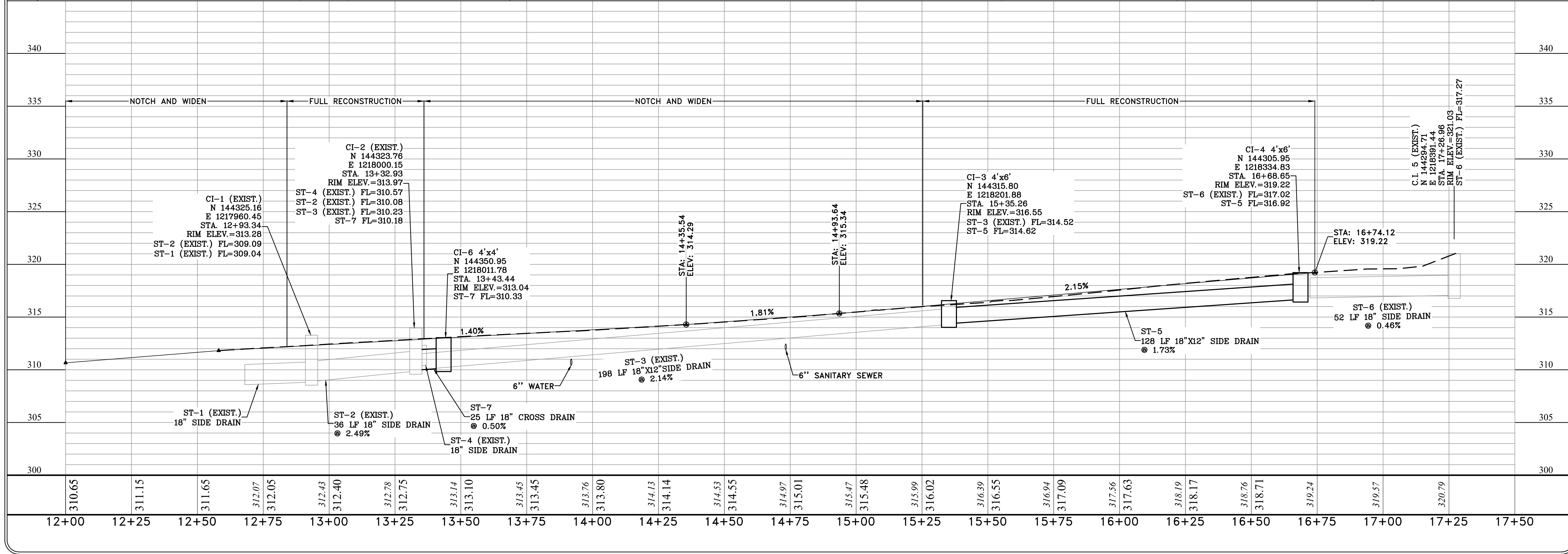
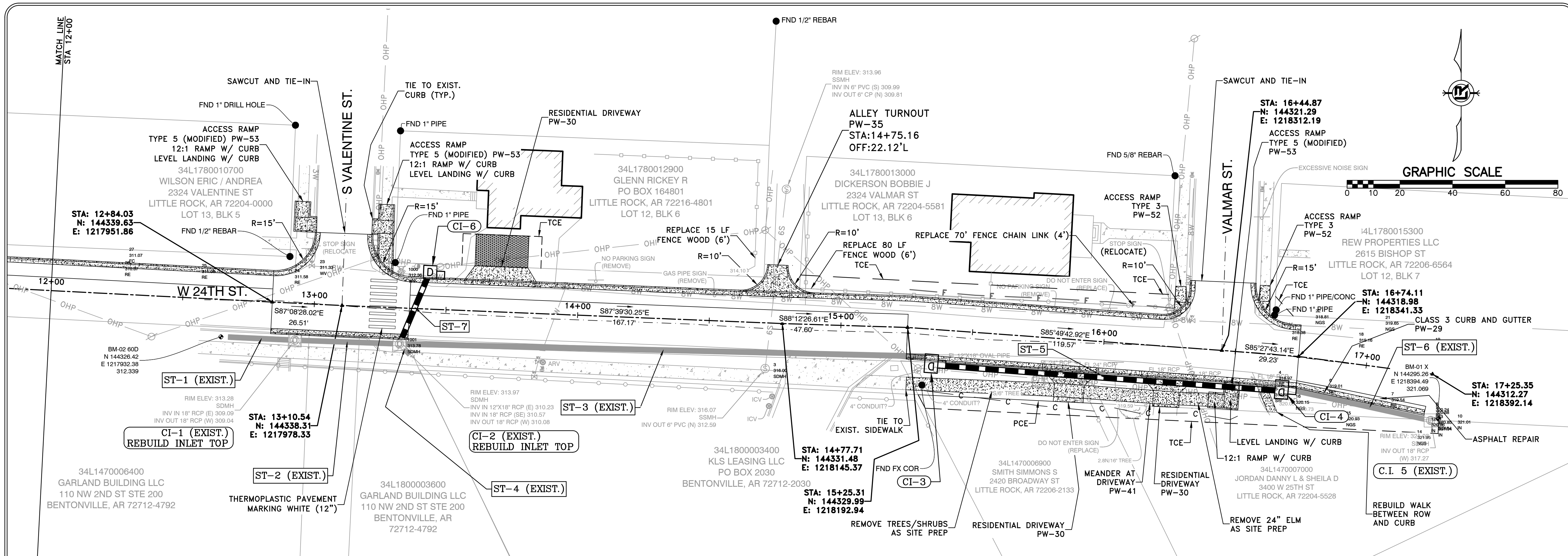
REVISIONS	DATE

W. 24TH ST. VALMAR ST. TO VALENTINE ST.
 CITY OF LITTLE ROCK, ARKANSAS
 PLAN AND PROFILE
 10+00 TO 12+00

DEPARTMENT OF PUBLIC WORKS
 CIVIL ENGINEERING
 701 W. MARKHAM
 LITTLE ROCK, ARKANSAS 72201



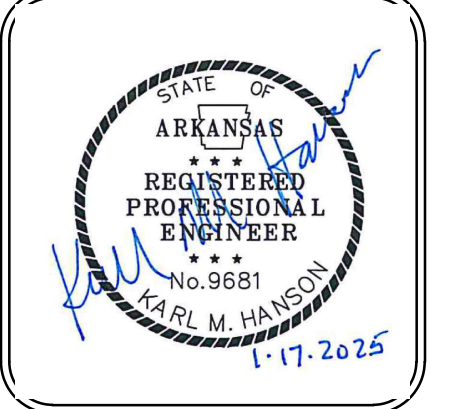
DRAWN BY
 KMH
 DESIGNED
 KMH
 CHECKED
 FJS
 DATE
 01-17-2025
 SCALE
 1"=20'
 PROJECT NO.
 01-17-ST-41
 SHEET NO.
 C5



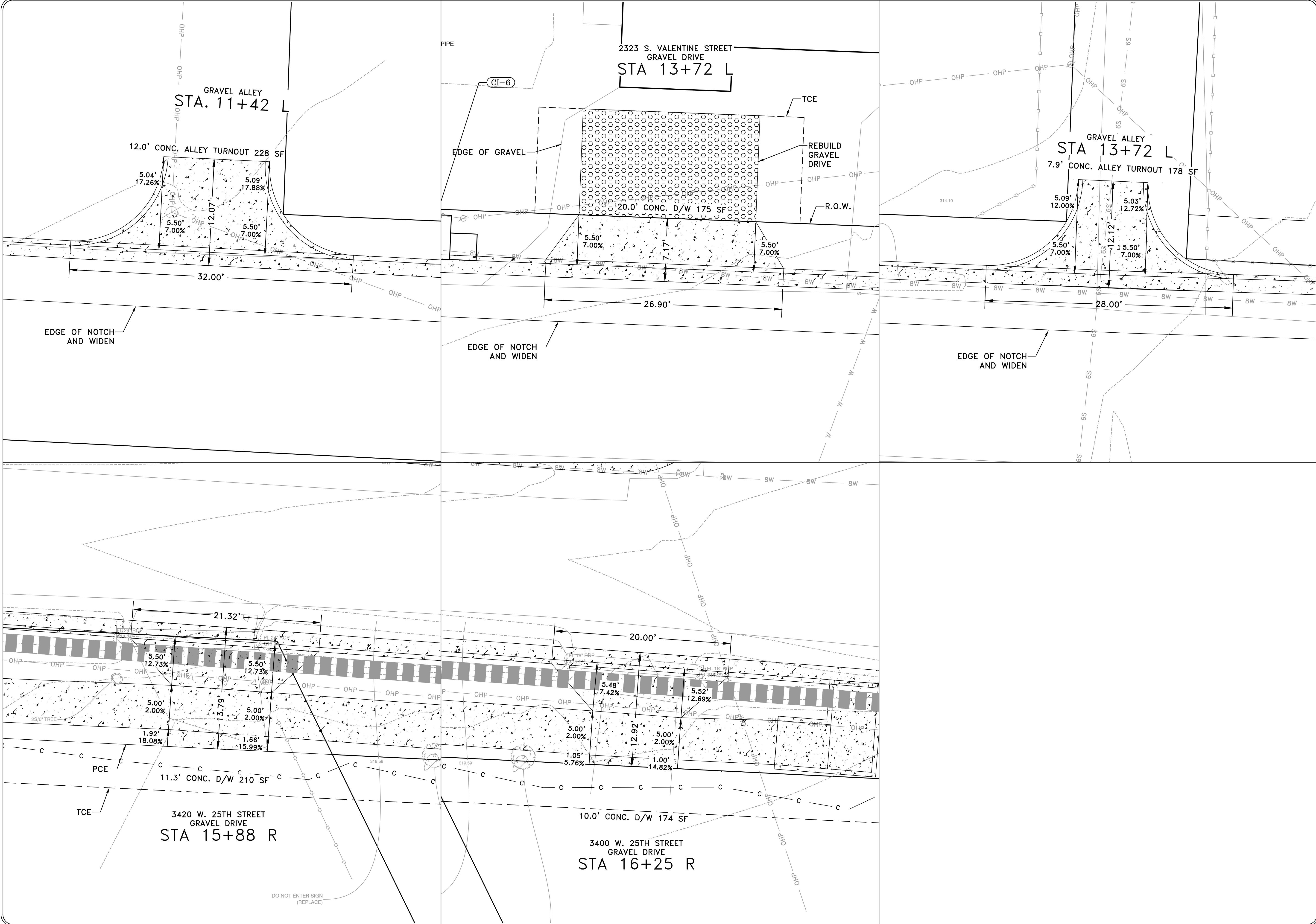
REVISIONS	DATE

W. 24TH ST. VALMAR ST. TO VALENTINE ST.
CITY OF LITTLE ROCK, ARKANSAS
PLAN AND PROFILE
12+00 TO 17+50

DEPARTMENT OF PUBLIC WORKS
 CIVIL ENGINEERING
 701 W. MARKHAM
 LITTLE ROCK, ARKANSAS 72201



DRAWN BY
 KMH
DESIGNED
 KMH
CHECKED
 FJS
DATE
 01-17-2025
SCALE
 1"=20'
PROJECT NO.
 01-17-ST-41
SHEET NO.
 C6



REVISIONS	DATE

W. 24TH ST. VALMAR ST. TO VALENTINE ST.
CITY OF LITTLE ROCK, ARKANSAS
DRIVEWAY PROFILES

DEPARTMENT OF PUBLIC WORKS
 CIVIL ENGINEERING
 701 W. MARKHAM
 LITTLE ROCK, ARKANSAS 72201



DRAWN BY
 KMH
DESIGNED
 KMH
CHECKED
 FJS
DATE
 01-17-2025
SCALE
 1"=20'
PROJECT NO.
 01-17-ST-41
SHEET NO.
 C7

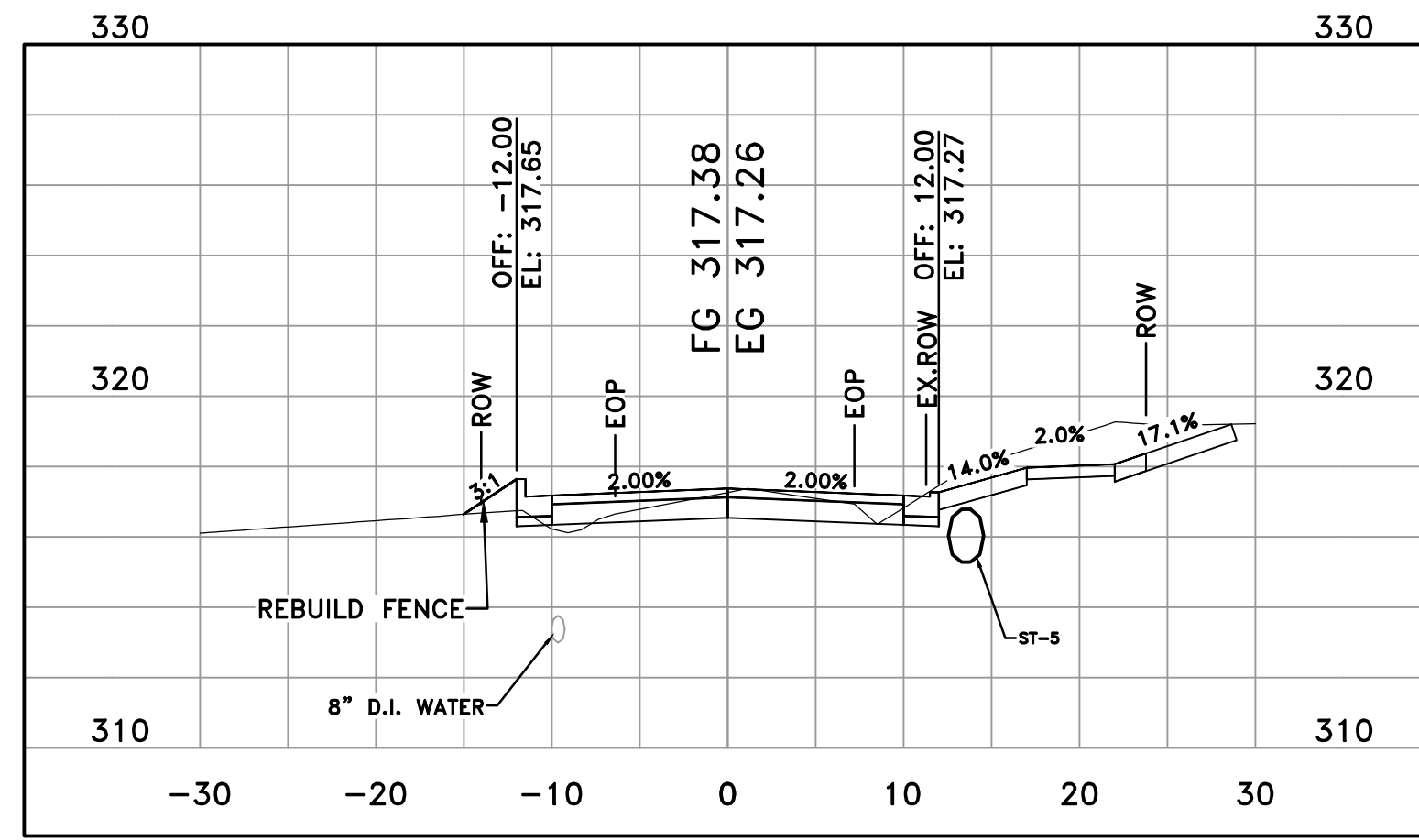
REVISIONS	DATE

W. 24TH ST. VALMAR ST. TO VALENTINE ST.
CITY OF LITTLE ROCK, ARKANSAS
CROSS SECTIONS

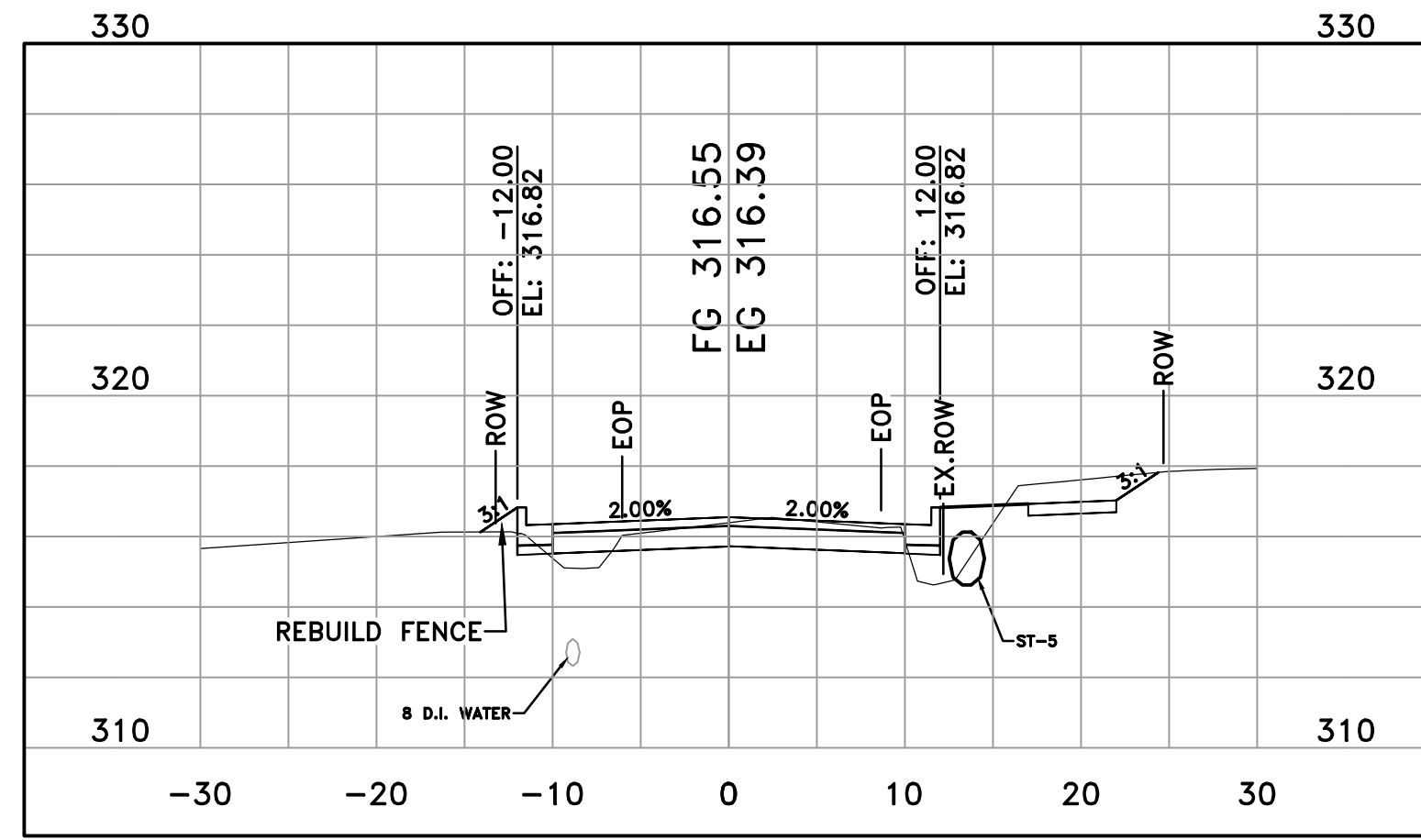
DEPARTMENT OF PUBLIC WORKS
CIVIL ENGINEERING
701 W. MARKHAM
LITTLE ROCK, ARKANSAS 72201



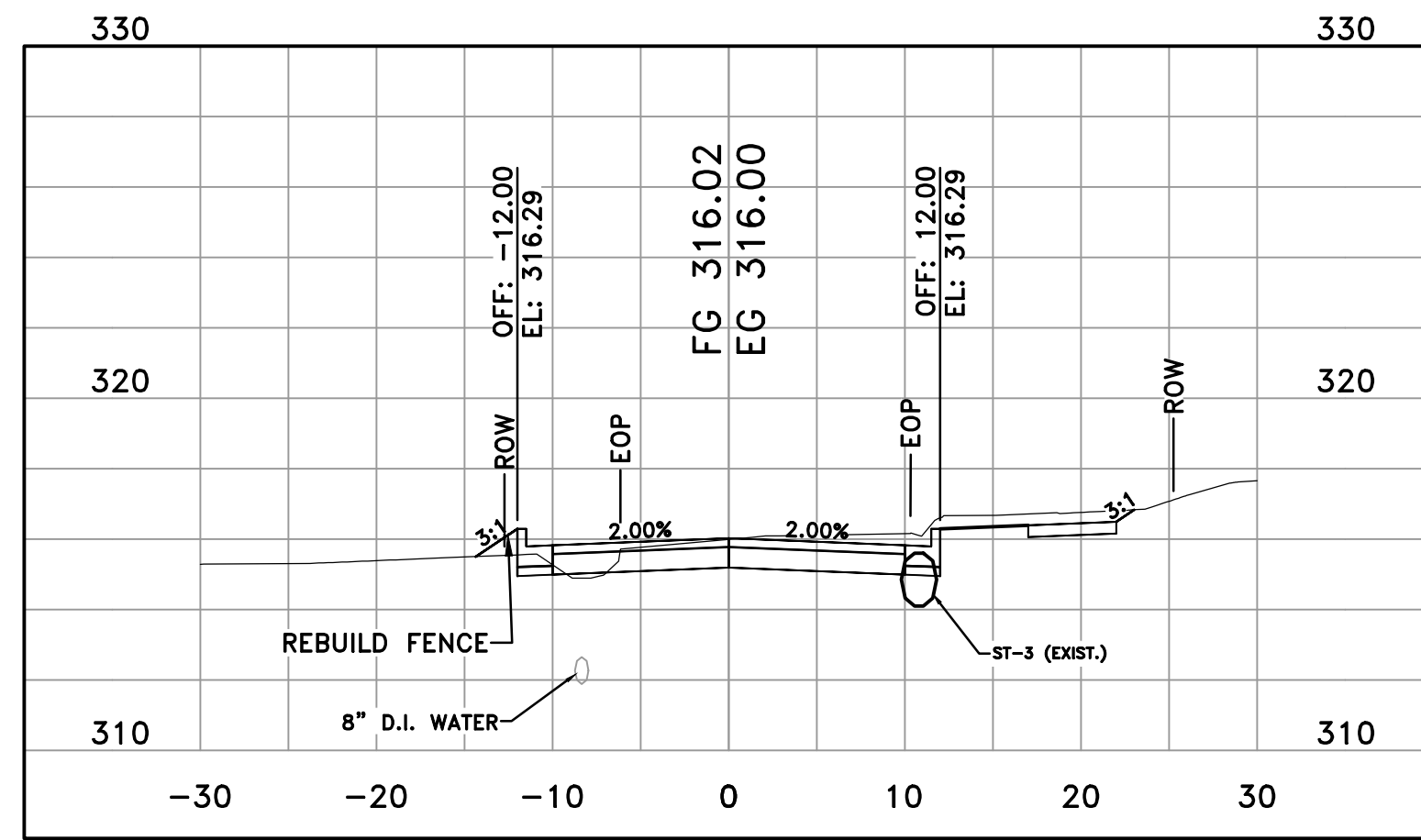
DRAWN BY
KMH
DESIGNED
KMH
CHECKED
FJS
DATE
01-17-2025
SCALE
1"=20'
PROJECT NO.
01-17-ST-41
SHEET NO.
C8



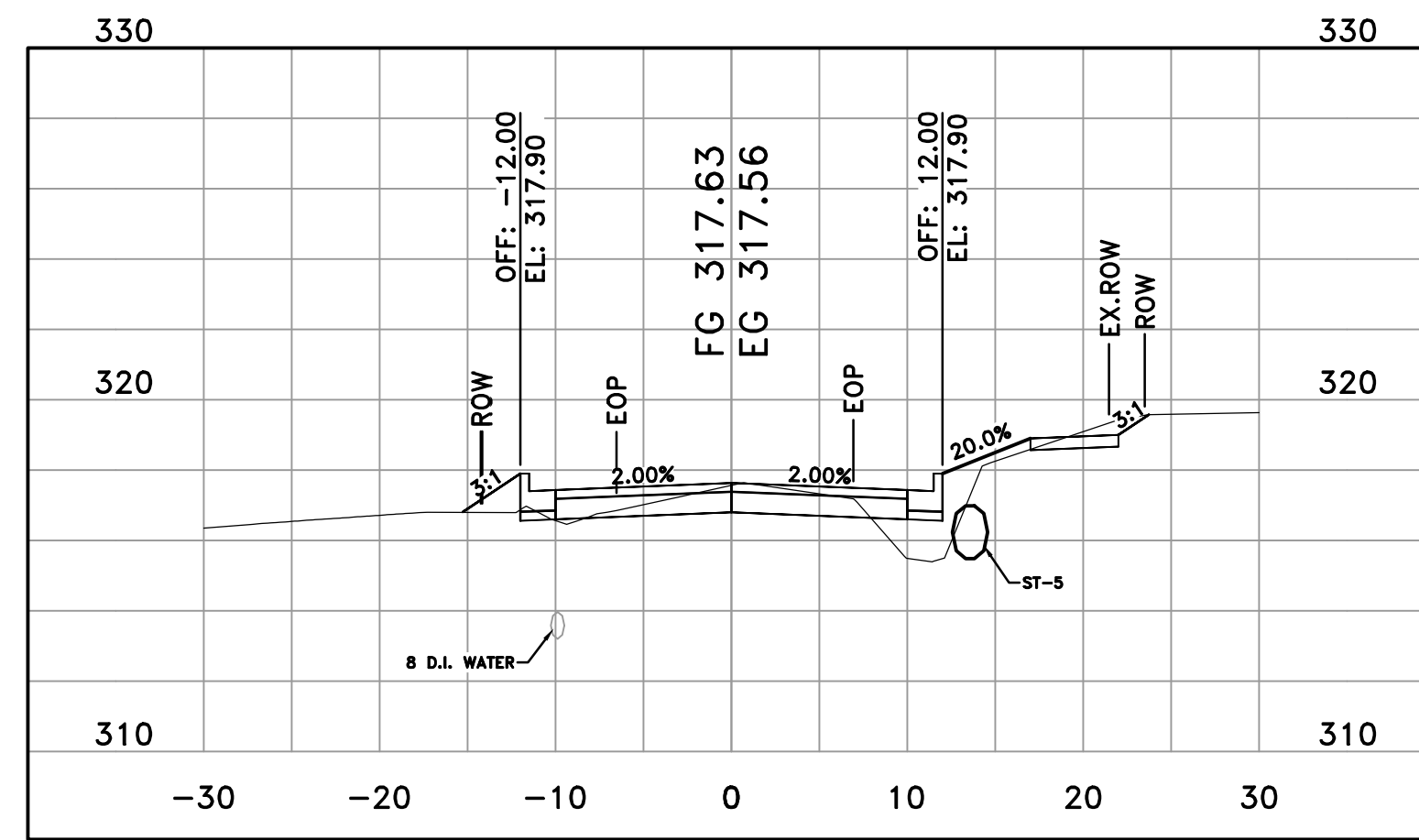
24TH STREET
15+88



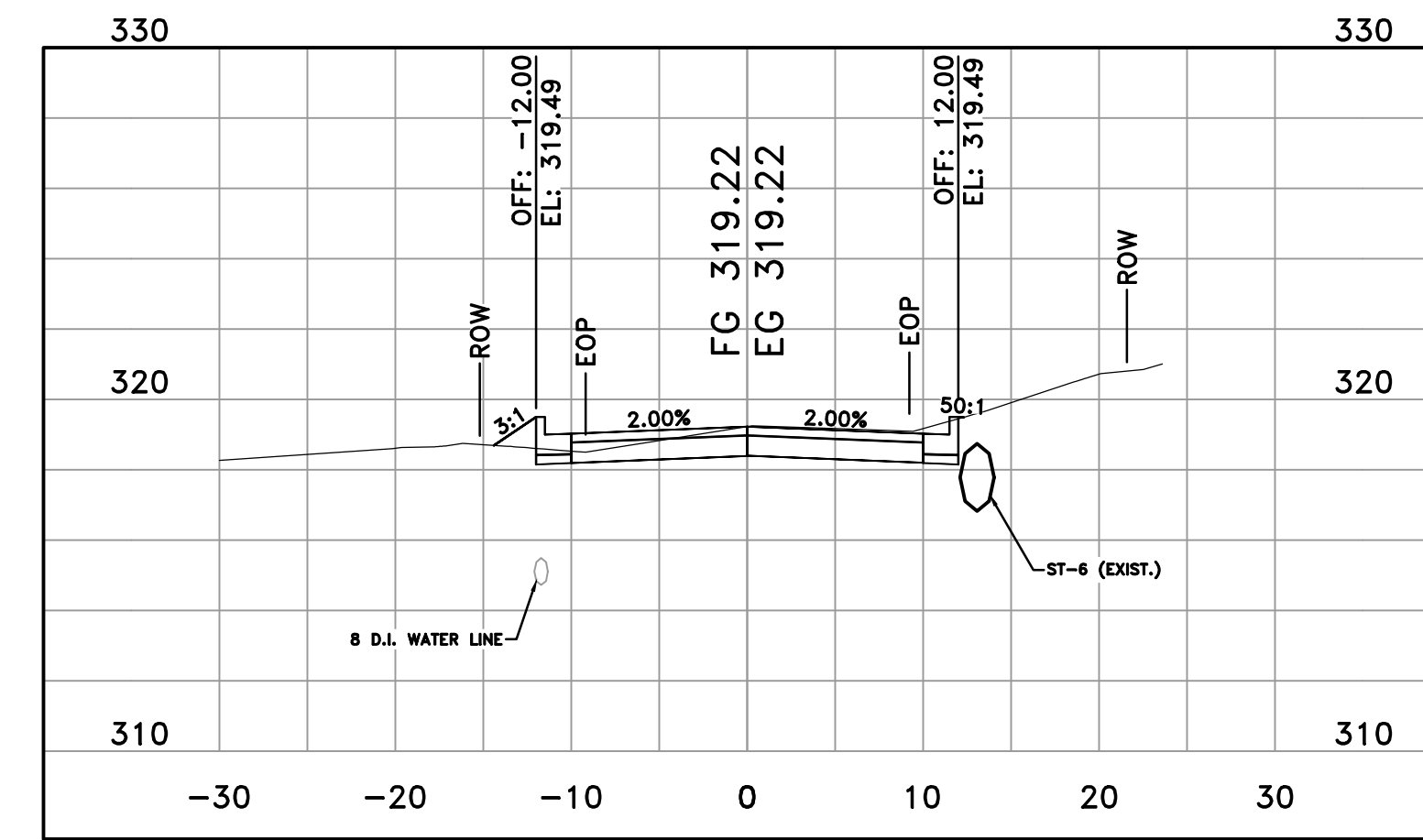
24TH STREET
15+50



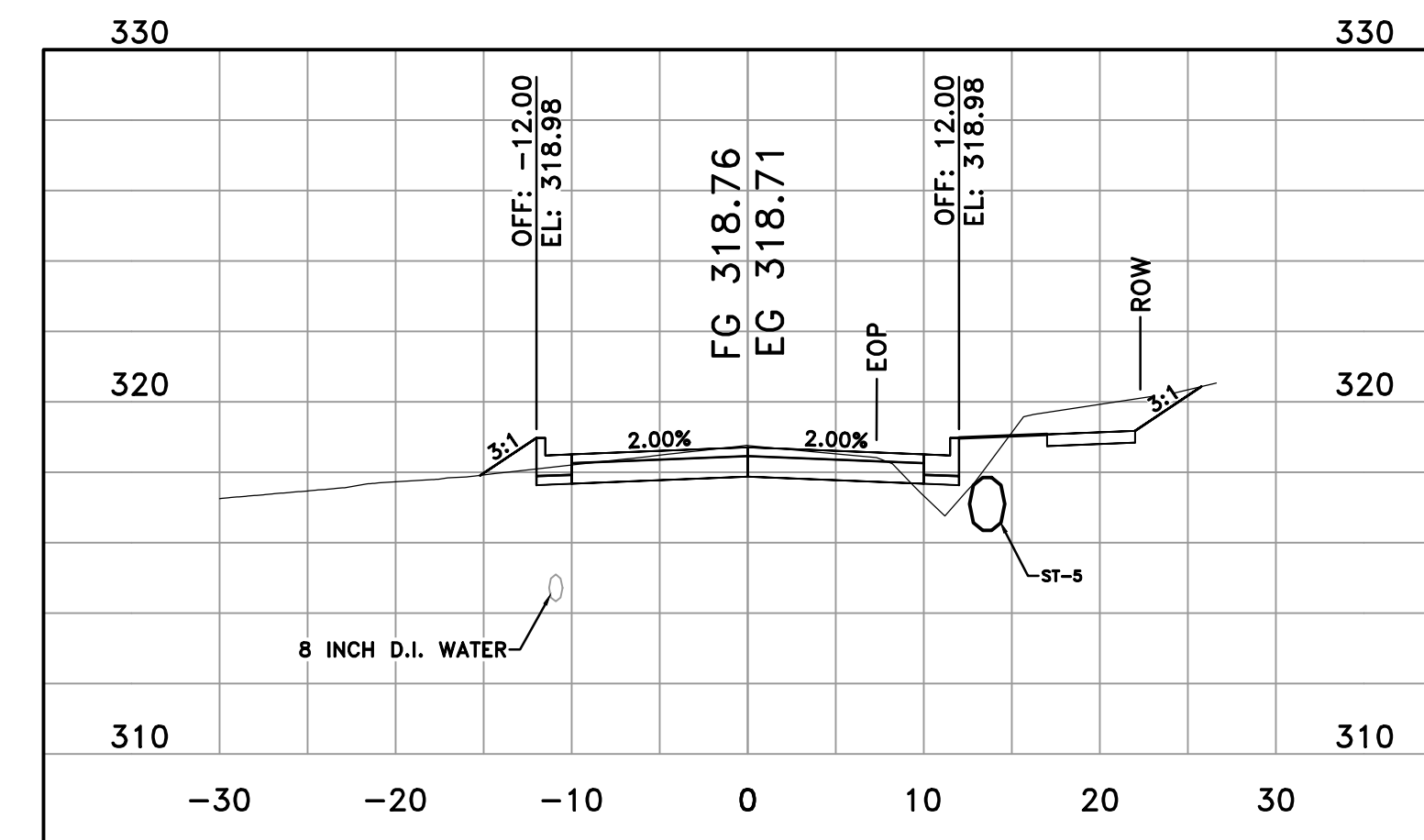
24TH STREET
15+25



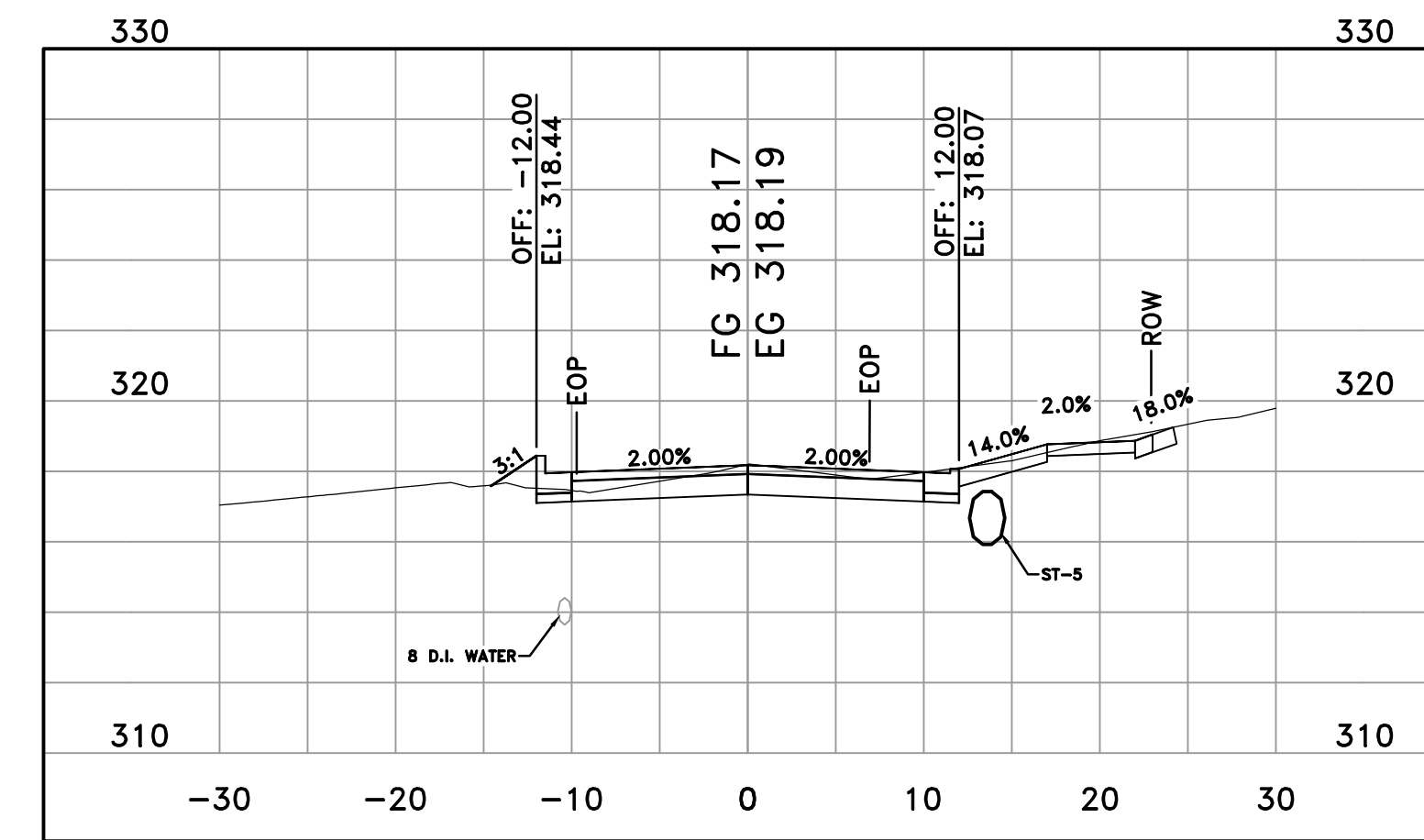
24TH STREET
16+00



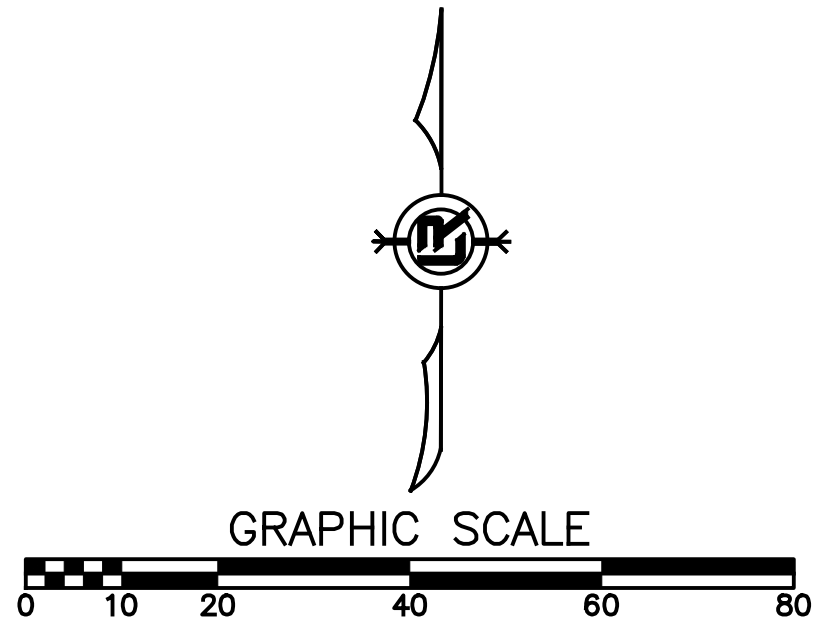
24TH STREET
16+74



24TH STREET
16+50

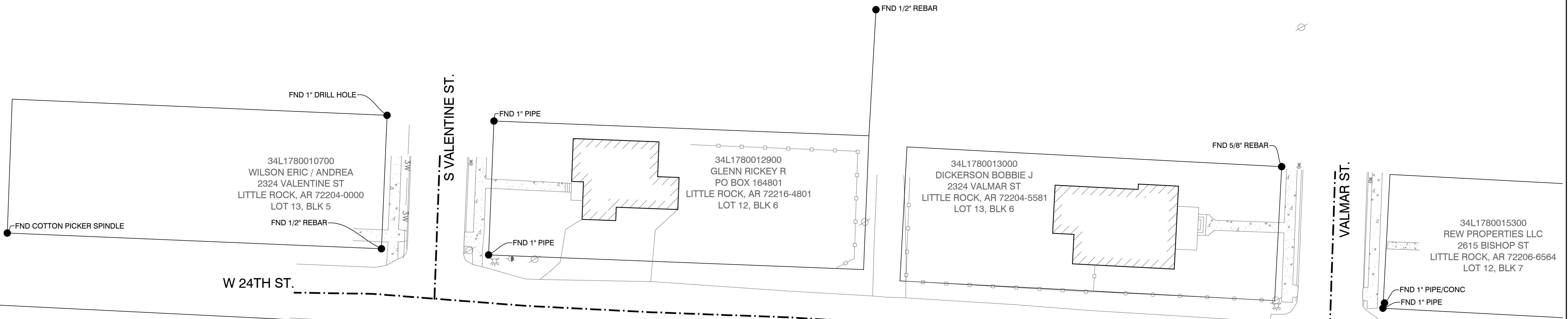


24TH STREET
16+25



REVISIONS	DATE

W. 24TH ST. VALMAR ST. TO VALENTINE ST.
 CITY OF LITTLE ROCK, ARKANSAS
 SURVEY CONTROL PLAN



34L1470006400
 GARLAND BUILDING LLC
 110 NW 2ND ST STE 200
 BENTONVILLE, AR 72712-4792

34L1800003600
 GARLAND BUILDING LLC
 110 NW 2ND ST STE 200
 BENTONVILLE, AR
 72712-4792

34L1800003400
 KLS LEASING LLC
 PO BOX 2030
 BENTONVILLE, AR 72712-2030

34L1470006900
 SMITH SIMMONS S
 2420 BROADWAY ST
 LITTLE ROCK, AR 72206-2133

34L1470007000
 JORDAN DANNY L & SHEILA D
 3400 W 25TH ST
 LITTLE ROCK, AR 72204-5528

DEPARTMENT OF PUBLIC WORKS
 CIVIL ENGINEERING
 701 W. MARKHAM
 LITTLE ROCK, ARKANSAS 72201



DRAWN BY
 KMH
 DESIGNED
 KMH
 CHECKED
 FJS
 DATE
 01-17-2025
 SCALE
 1"=20'
 PROJECT NO.
 01-17-ST-41
 SHEET NO.
 C9

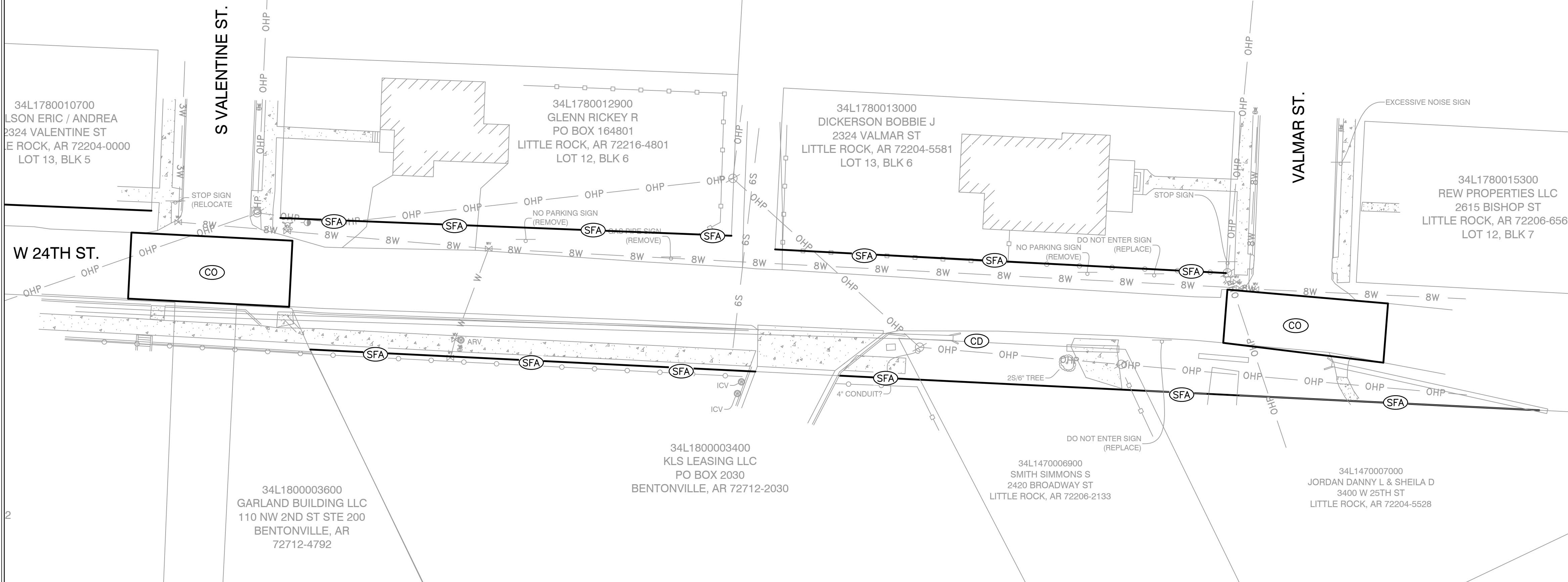
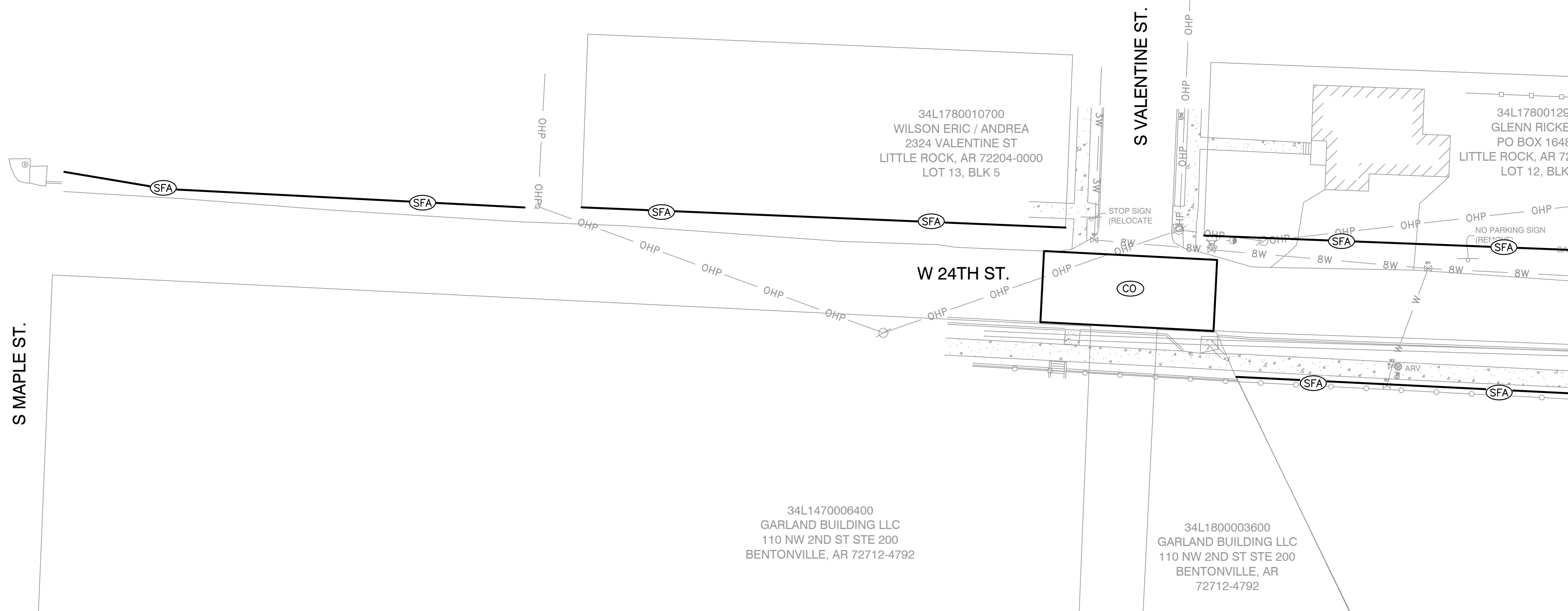
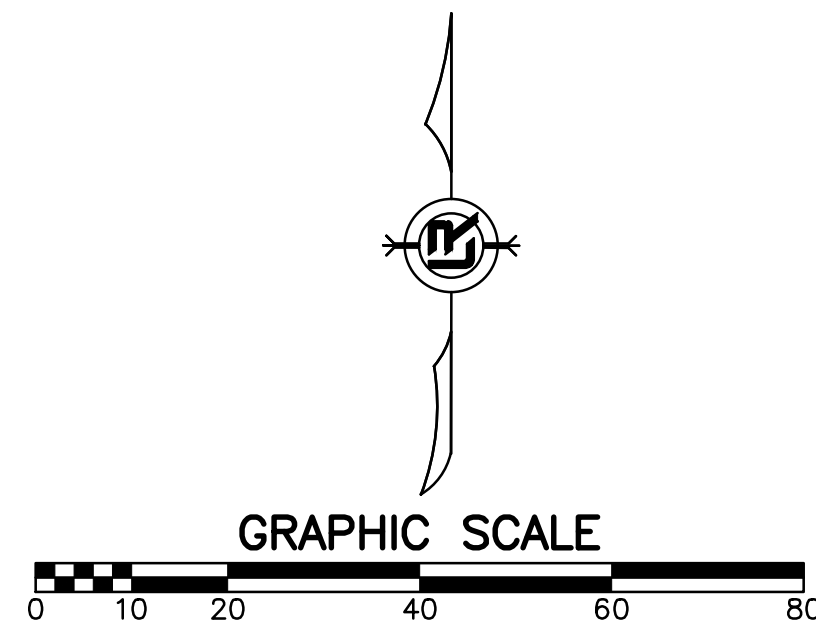
REVISIONS	DATE

**W. 24TH ST. VALMAR ST. TO VALENTINE ST.
CITY OF LITTLE ROCK, ARKANSAS
EROSION CONTROL PHASE 1**

DEPARTMENT OF PUBLIC WORKS
CIVIL ENGINEERING
701 W. MARKHAM
LITTLE ROCK, ARKANSAS 72201



DRAWN BY
KMH
DESIGNED
KMH
CHECKED
FJS
DATE
01-17-2025
SCALE
1"=20'
PROJECT NO.
01-17-ST-41
SHEET NO.
C10



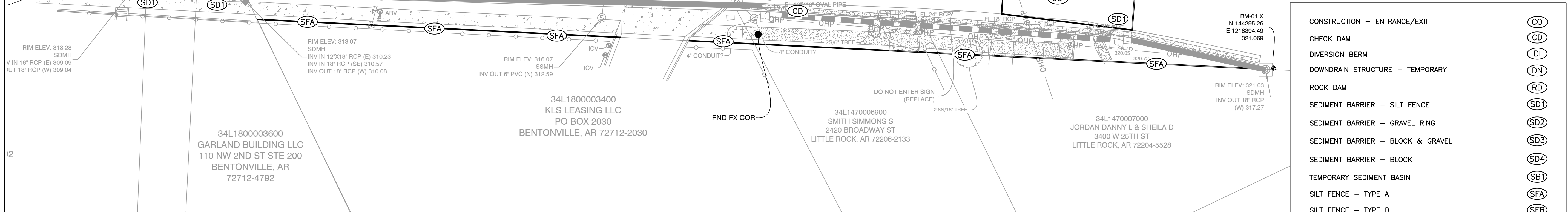
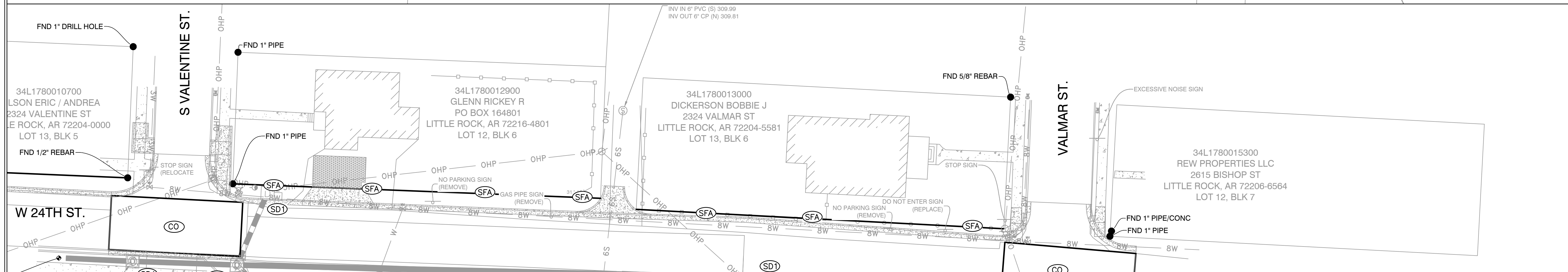
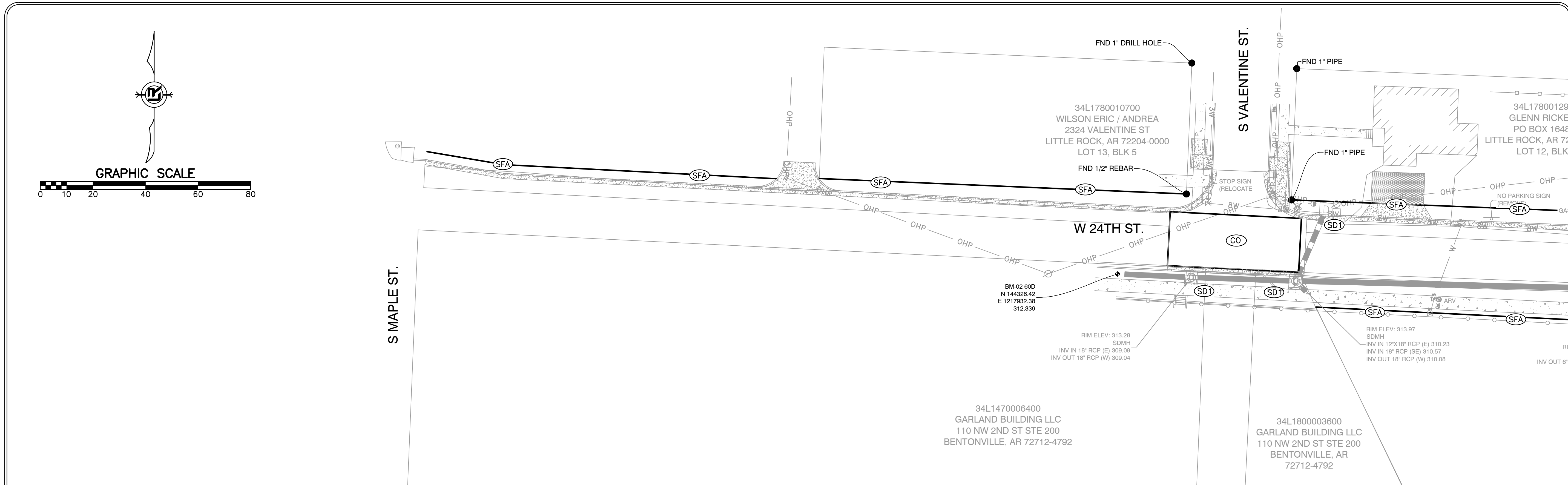
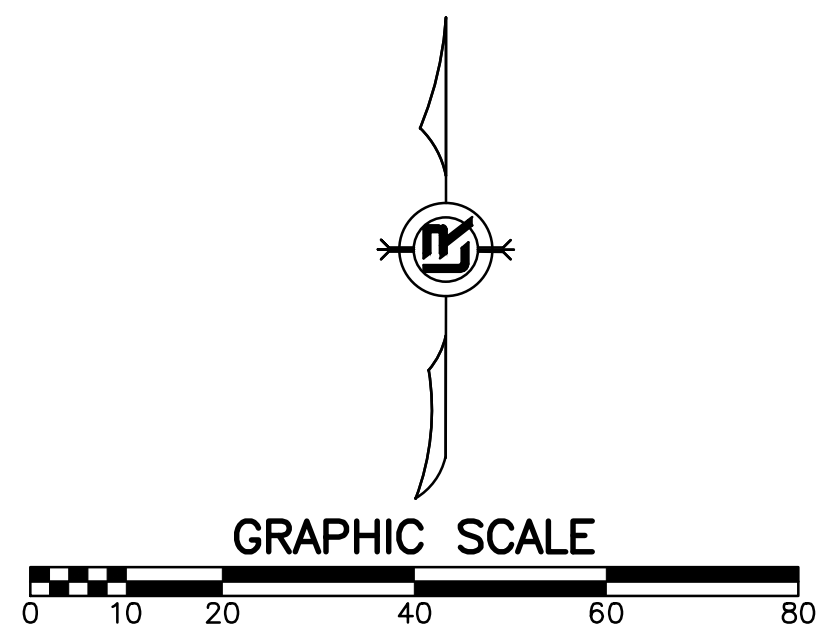
PHASE 1

CONSTRUCTION EROSION CONTROL BEST MANAGEMENT PRACTICES

UPON IMPLEMENTATION AND INSTALLATION OF THE FOLLOWING AREAS: TRAILERS, PARKING, LAY DOWN, PORTA-POTTY, WHEEL WASH, CONCRETE WASHOUT, FUEL AND MATERIAL STORAGE CONTAINERS, SOLID WASTE CONTAINERS, ETC., IMMEDIATELY DENOTE THEM ON THE SITE MAPS AND NOTE ANY CHANGES IN LOCATION AS THEY OCCUR THROUGHOUT THE CONSTRUCTION PROCESS. IN ADDITION, NOTE ANY OFF-SITE AREA WHERE FILL IS IMPORTED FROM OR SOIL IS EXPORTED TO ON THE SITE MAPS.

1. INSTALL STABILIZED CONSTRUCTION ENTRANCE / EXIT(S) AND SWPPP INFORMATION SIGN.
2. INSTALL SILT FENCE(S) ON THE SITE. CLEAR ONLY THOSE AREAS NECESSARY TO INSTALL SILT FENCE.
3. PREPARE TEMPORARY PARKING AND STORAGE AREA.
4. HALT ALL ACTIVITIES AND CONTACT THE CITY OF LITTLE ROCK TO PERFORM INSPECTION AND ACCEPTANCE OF BMP'S.
5. CONSTRUCT AND STABILIZE SEDIMENT BASIN(S) AND SEDIMENT TRAP(S) WITH APPROPRIATE OUTFALL STRUCTURES. CLEAR ONLY THOSE AREAS NECESSARY TO INSTALL BASINS AND TRAPS.
6. INSTALL AND STABILIZE HYDRAULIC CONTROL STRUCTURES (DIKES, SWALES, CHECK DAMS, ETC.) CLEAR ONLY THOSE AREAS NECESSARY TO INSTALL HYDRAULIC CONTROL DEVICES.

CONSTRUCTION - ENTRANCE/EXIT	(CO)
CHECK DAM	(CD)
DIVERSION BERM	(DI)
DOWNDRAIN STRUCTURE - TEMPORARY	(DN)
ROCK DAM	(RD)
SEDIMENT BARRIER - SILT FENCE	(SD1)
SEDIMENT BARRIER - GRAVEL RING	(SD2)
SEDIMENT BARRIER - BLOCK & GRAVEL	(SD3)
SEDIMENT BARRIER - BLOCK	(SD4)
TEMPORARY SEDIMENT BASIN	(SB1)
SILT FENCE - TYPE A	(SFA)
SILT FENCE - TYPE B	(SFB)
SILT FENCE - TYPE C	(SFC)
STORM DRAIN OUTLET PROTECTION	(ST)
SURFACE ROUGHENING	(SU)
DISTURBED AREA STABILIZATION -TEMPORARY STABILIZATION	(TS1)
DISTURBED AREA STABILIZATION -TEMPORARY GRASSING	(TS2)
DISTURBED AREA STABILIZATION -PERMANENT GRASSING	(TS3)
MATTING/BLANKETS	(Mb)



CONSTRUCTION EROSION CONTROL BEST MANAGEMENT PRACTICES

UPON IMPLEMENTATION AND INSTALLATION OF THE FOLLOWING AREAS: TRAILERS, PARKING, LAY DOWN, PORTA-POTTY, WHEEL WASH, CONCRETE WASHOUT, FUEL AND MATERIAL STORAGE CONTAINERS, SOLID WASTE CONTAINERS, ETC., IMMEDIATELY DENOTE THEM ON THE SITE MAPS AND NOTE ANY CHANGES IN LOCATION AS THEY OCCUR THROUGHOUT THE CONSTRUCTION PROCESS. IN ADDITION, NOTE ANY OFF-SITE AREA WHERE FILL IS IMPORTED FROM OR SOIL IS EXPORTED TO ON THE SITE MAPS.

PHASE 2

- BEGIN SITE DEMOLITION, CLEARING, AND GRUBBING.
- CONTINUE GRADING THE SITE.
- INSTALL UTILITIES, UNDERDRAINS, STORM SEWERS, AND INLETS.
- PREPARE SUBGRADE, ROAD BASE, AND CURBS AND GUTTERS.
- CONSTRUCT DRIVEWAY TRANSITIONS.
- INSTALL APPROPRIATE INLET PROTECTION DEVICES FOR PAVED AREAS AS WORK PROGRESSES.

CONSTRUCTION - ENTRANCE/EXIT	(CO)
CHECK DAM	(CD)
DIVERSION BERM	(DI)
DOWNDRAIN STRUCTURE - TEMPORARY	(DN)
ROCK DAM	(RD)
SEDIMENT BARRIER - SILT FENCE	(SD1)
SEDIMENT BARRIER - GRAVEL RING	(SD2)
SEDIMENT BARRIER - BLOCK & GRAVEL	(SD3)
SEDIMENT BARRIER - BLOCK	(SD4)
TEMPORARY SEDIMENT BASIN	(SB1)
SILT FENCE - TYPE A	(SFA)
SILT FENCE - TYPE B	(SFB)
SILT FENCE - TYPE C	(SFC)
STORM DRAIN OUTLET PROTECTION	(ST)
SURFACE ROUGHENING	(SU)
DISTURBED AREA STABILIZATION -TEMPORARY STABILIZATION	(TS1)
DISTURBED AREA STABILIZATION -TEMPORARY GRASSING	(TS2)
DISTURBED AREA STABILIZATION -PERMANENT GRASSING	(TS3)
MATTING/BLANKETS	(Mb)

REVISIONS	DATE

W. 24TH ST. VALMAR ST. TO VALENTINE ST.
CITY OF LITTLE ROCK, ARKANSAS
EROSION CONTROL PHASE 2

DEPARTMENT OF PUBLIC WORKS
 CIVIL ENGINEERING
 701 W. MARKHAM
 LITTLE ROCK, ARKANSAS 72201



DRAWN BY
KMH
DESIGNED
KMH
CHECKED
FJS
DATE
01-17-2025
SCALE
1"=20'
PROJECT NO.
01-17-ST-41
SHEET NO.
C11

REVISIONS	DATE

W. 24TH ST. VALMAR ST. TO VALENTINE ST.
 CITY OF LITTLE ROCK, ARKANSAS
 EROSION CONTROL PHASE 3

DEPARTMENT OF PUBLIC WORKS
 CIVIL ENGINEERING
 701 W. MARKHAM
 LITTLE ROCK, ARKANSAS 72201



DRAWN BY
 KMH

DESIGNED
 KMH

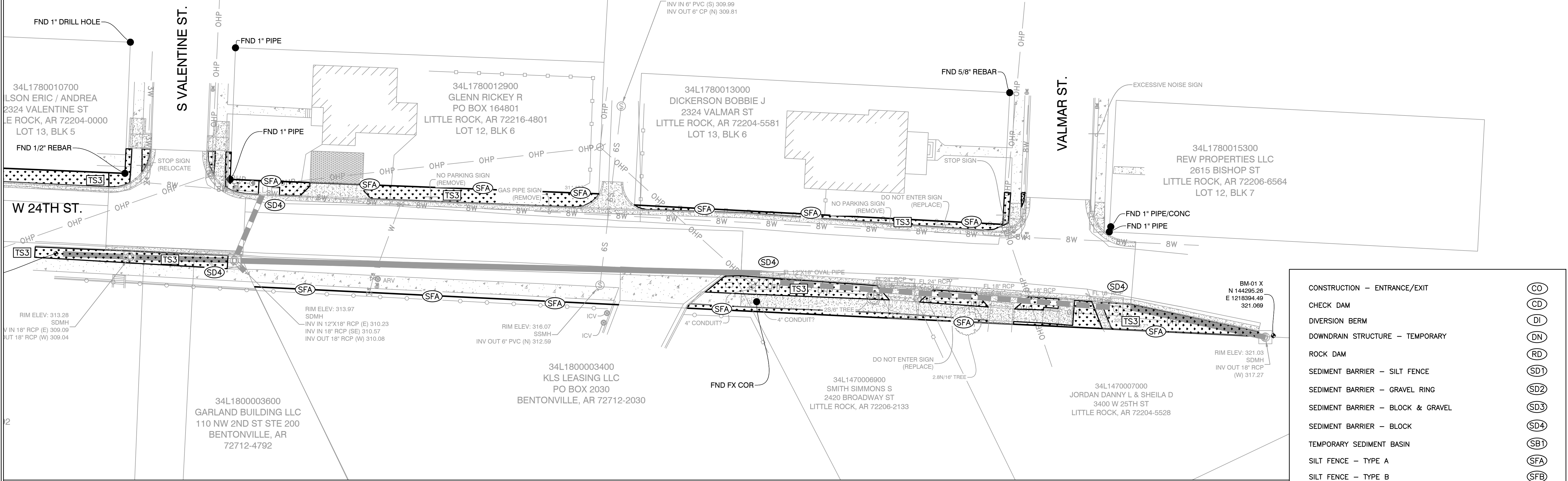
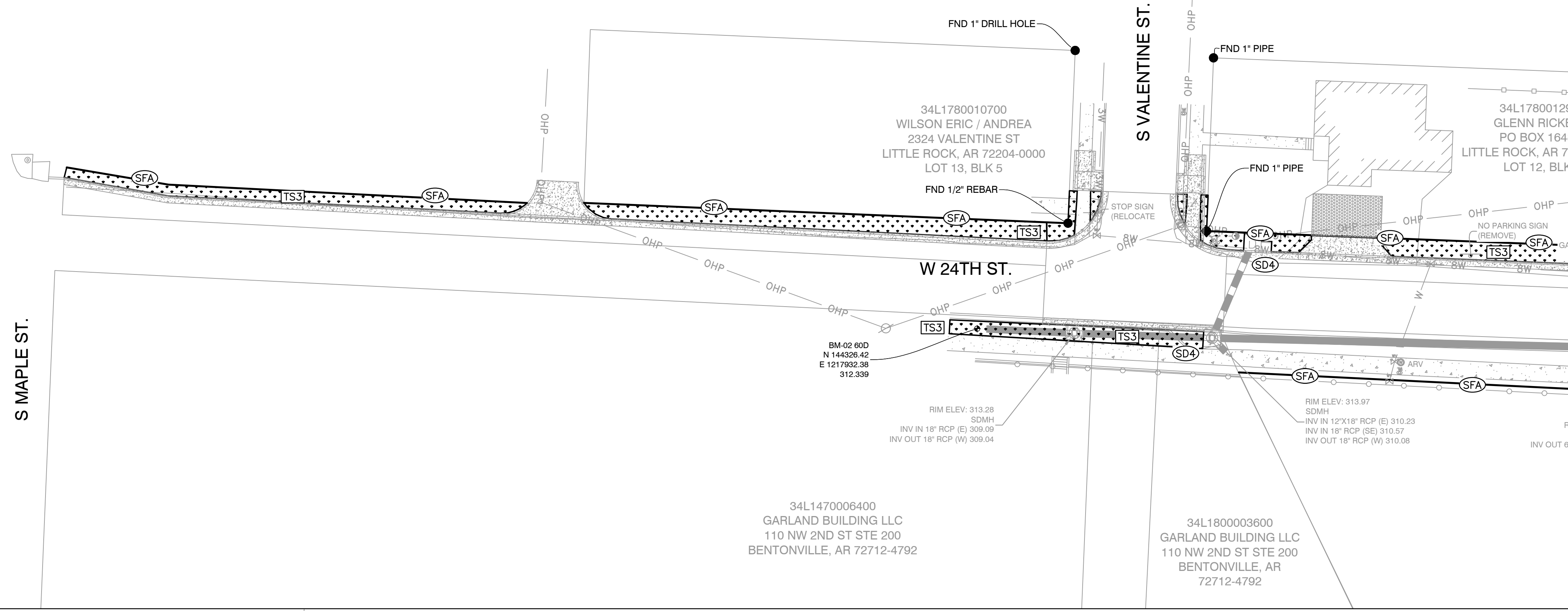
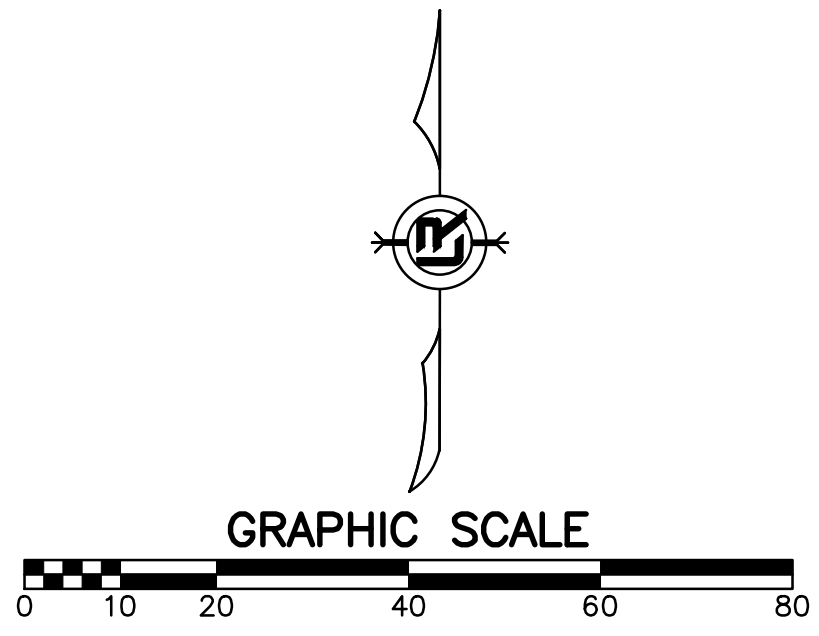
CHECKED
 FJS

DATE
 01-17-2025

SCALE
 1"=20'

PROJECT NO.
 01-17-ST-41

SHEET NO.
 C12



CONSTRUCTION - ENTRANCE/EXIT	(CO)
CHECK DAM	(CD)
DIVERSION BERM	(DI)
DOWNDRAIN STRUCTURE - TEMPORARY	(DN)
ROCK DAM	(RD)
SEDIMENT BARRIER - SILT FENCE	(SD1)
SEDIMENT BARRIER - GRAVEL RING	(SD2)
SEDIMENT BARRIER - BLOCK & GRAVEL	(SD3)
SEDIMENT BARRIER - BLOCK	(SD4)
TEMPORARY SEDIMENT BASIN	(SB1)
SILT FENCE - TYPE A	(SFA)
SILT FENCE - TYPE B	(SFB)
SILT FENCE - TYPE C	(SFC)
STORM DRAIN OUTLET PROTECTION	(ST)
SURFACE ROUGHENING	(SU)
DISTURBED AREA STABILIZATION - TEMPORARY STABILIZATION	(TS1)
DISTURBED AREA STABILIZATION - TEMPORARY GRASSING	(TS2)
DISTURBED AREA STABILIZATION - PERMANENT GRASSING	(TS3)
MATTING/BLANKETS	(Mb)

CONSTRUCTION EROSION CONTROL BEST MANAGEMENT PRACTICES

UPON IMPLEMENTATION AND INSTALLATION OF THE FOLLOWING AREAS: TRAILERS, PARKING, LAY DOWN, PORTA-POTTY, WHEEL WASH, CONCRETE WASHOUT, FUEL AND MATERIAL STORAGE CONTAINERS, SOLID WASTE CONTAINERS, ETC., IMMEDIATELY DENOTE THEM ON THE SITE MAPS AND NOTE ANY CHANGES IN LOCATION AS THEY OCCUR THROUGHOUT THE CONSTRUCTION PROCESS. IN ADDITION, NOTE ANY OFF-SITE AREA WHERE FILL IS IMPORTED FROM OR SOIL IS EXPORTED TO ON THE SITE MAPS.

PHASE 3

1. FINISH GRADE SIDE SLOPES AND PREPARE SUBGRADES FOR SIDEWALKS, ETC.
2. PREPARE SITE FOR PAVING.
3. PAVE WHERE INDICATED ON PLANS. CONSTRUCT SIDEWALKS.
4. INSTALL APPROPRIATE INLET PROTECTION DEVICES FOR PAVED AREAS AS WORK PROGRESSES.
5. COMPLETE GRADING AND INSTALLATION OF PERMANENT STABILIZATION OVER ALL NON-PAVED AREAS.