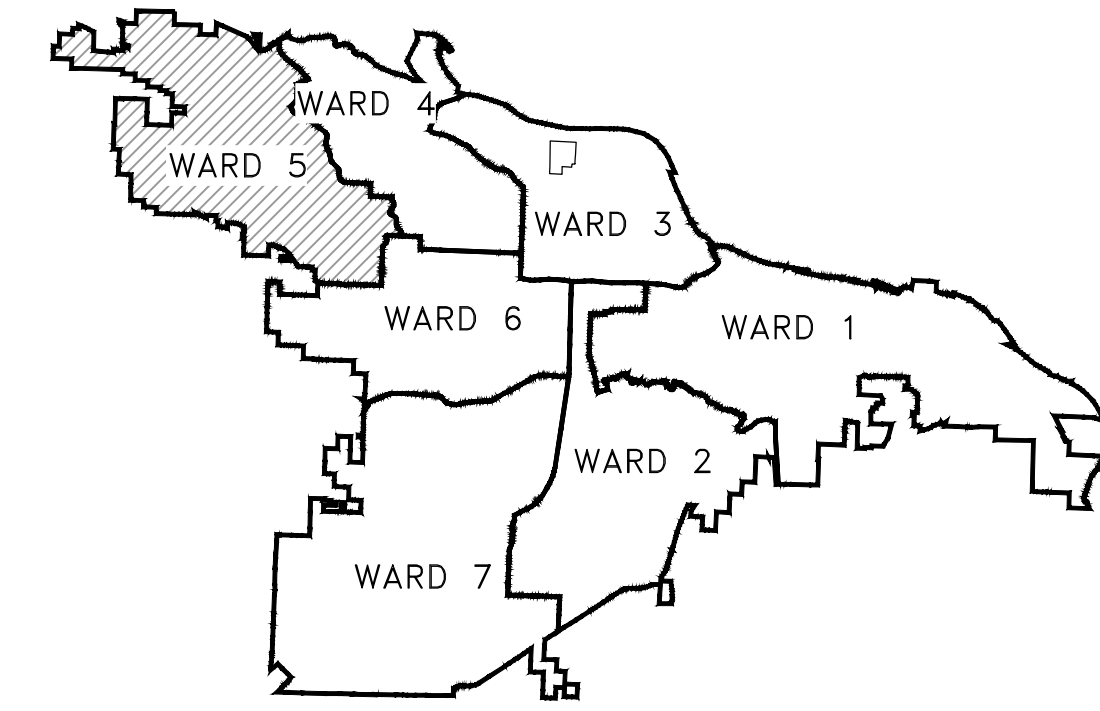
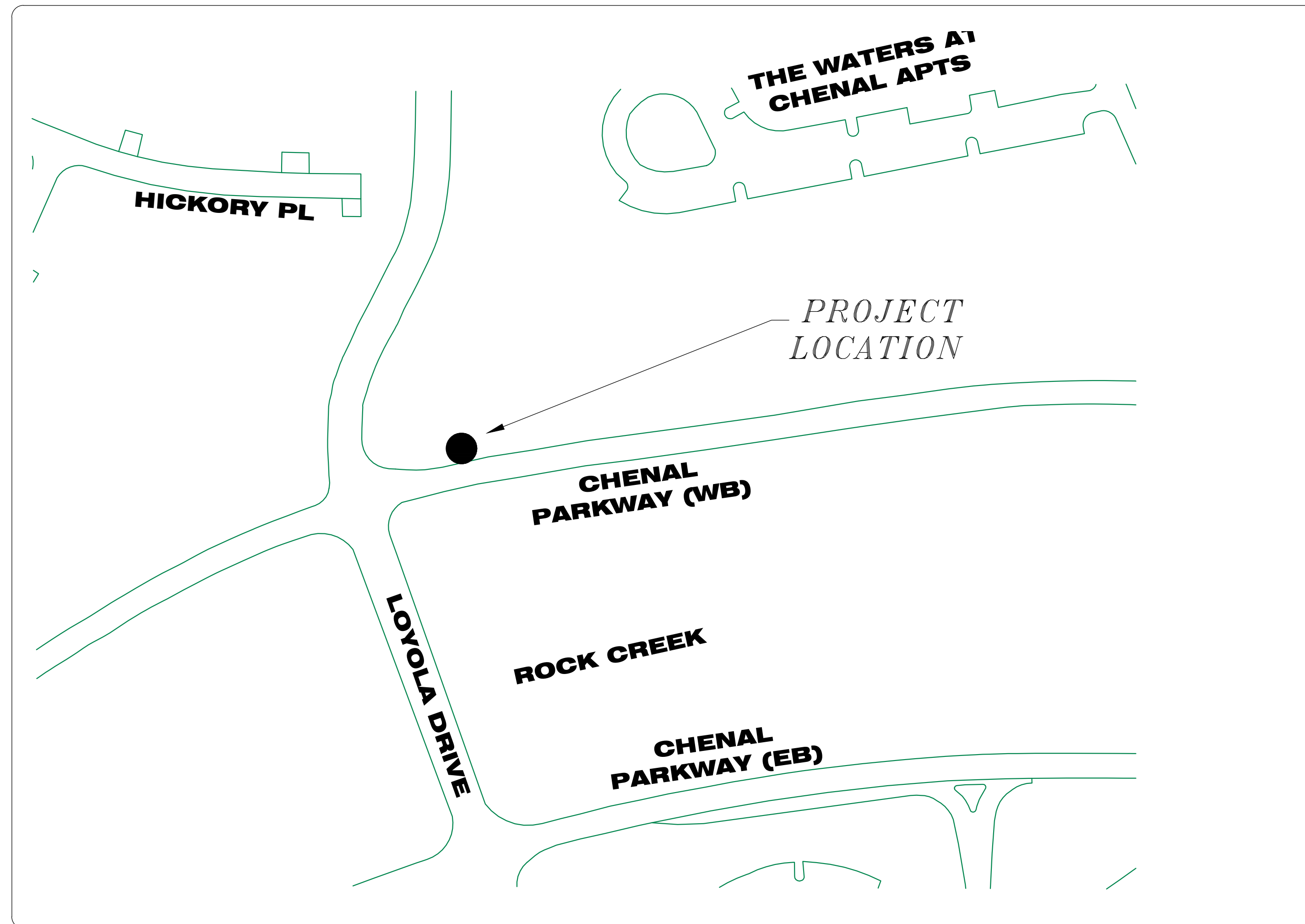


# CHENAL PKWY AT LOYOLA DRIVE Right Turn Lane

## PROJECT LOCATION



PROJECT LOCATION - WARD 5



| SHEET NO. | TITLE                  |
|-----------|------------------------|
| C1        | COVER SHEET            |
| C2        | GEN NOTES & QUANTITIES |
| C3        | PLAN VIEW              |
| C4        | X SECTIONS             |



**2022-2024  
BOND PROGRAM**

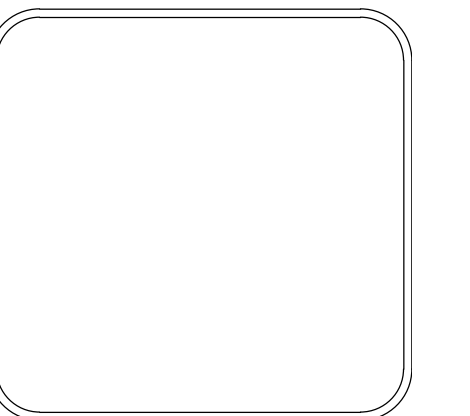
DEPARTMENT OF PUBLIC WORKS  
CIVIL ENGINEERING  
701 WEST MARKHAM STREET  
LITTLE ROCK, ARKANSAS 72201



| REVISIONS | DATE |
|-----------|------|
|           |      |

CITY OF LITTLE ROCK, ARKANSAS  
CHENAL PKWY AT LOYOLA DR (RIGHT TURN LANE)  
COVER SHEET

DEPARTMENT OF PUBLIC WORKS  
CIVIL ENGINEERING  
701 W. MARKHAM  
LITTLE ROCK, ARKANSAS 72201

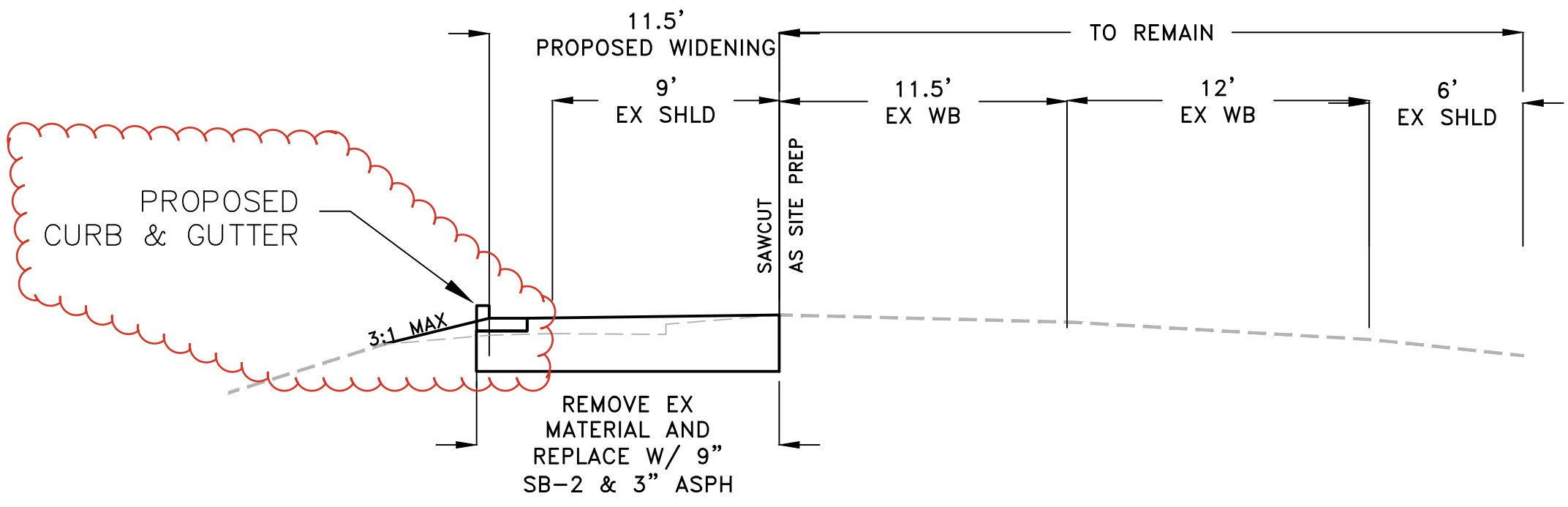


|                        |
|------------------------|
| DRAWN BY               |
| DESIGNED               |
| CHECKED                |
| DATE<br>04-25-2024     |
| SCALE                  |
| PROJECT NO.<br>CLR #?? |
| SHEET NO.<br>C1        |

| CLR PROJECT                          |   |           |          |
|--------------------------------------|---|-----------|----------|
| CHENAL AT LOYOLA RIGHT TURN ESTIMATE |   |           |          |
|                                      |   | 25-Apr-24 |          |
| ITEM #                               | ITEM DESCRIPTION                          | UNIT      | QUANTITY |
| 2.01                                 | SITE PREPARATION                          | LS        | 1        |
| 3.01                                 | UNCLASSIFIED EXCAVATION                   | CY        | 100      |
| 3.02                                 | COMPACTED EMBANKMENT, SELECT FILL         | CY        | 20       |
| 4.01                                 | AGGREGATE BASE COURSE                     | TON       | 115      |
| 6.01                                 | ACHM SURFACE COURSE                       | TON       | 60       |
| 16.01                                | MAINTENANCE OF TRAFFIC                    | LS        | 1        |
| 19.01                                | FINAL CLEAN UP                            | LS        | 1        |
| 24.20                                | SEEDING                                   | AC        | 0.1      |
| 719.04W                              | THERMOPLASTIC PAVEMENT MARKING WHITE (4") | LF        | 470      |
| 719.50                               | THERMOPLASTIC PAVEMENT MARKING (WORDS)    | EA        | 2        |
| 719.60                               | THERMOPLASTIC PAVEMENT MARKING (ARROWS)   | EA        | 2        |

**REVISED QUANTITIES**

| ITEM #  | ITEM DESCRIPTION                          | UNIT | QUANTITY |
|---------|---|------|----------|
| 2.01    | SITE PREPARATION                          | LS   | 1        |
| 3.01    | UNCLASSIFIED EXCAVATION                   | CY   | 100      |
| 3.02    | COMPACTED EMBANKMENT, SELECT FILL         | CY   | 20       |
| 4.01    | AGGREGATE BASE COURSE                     | TON  | 115      |
| 6.01    | ACHM SURFACE COURSE                       | TON  | 60       |
| 8.01    | CURB & GUTTER                             | LF   | 230      |
| 8.03    | CONCRETE FLUME                            | SF   | 15       |
| 16.01   | MAINTENANCE OF TRAFFIC                    | LS   | 1        |
| 19.01   | FINAL CLEAN UP                            | LS   | 1        |
| 24.20   | SEEDING                                   | AC   | 0.1      |
| 719.04W | THERMOPLASTIC PAVEMENT MARKING WHITE (4") | LF   | 277      |
| 719.50  | THERMOPLASTIC PAVEMENT MARKING (WORDS)    | EA   | 2        |
| 719.60  | THERMOPLASTIC PAVEMENT MARKING (ARROWS)   | EA   | 2        |



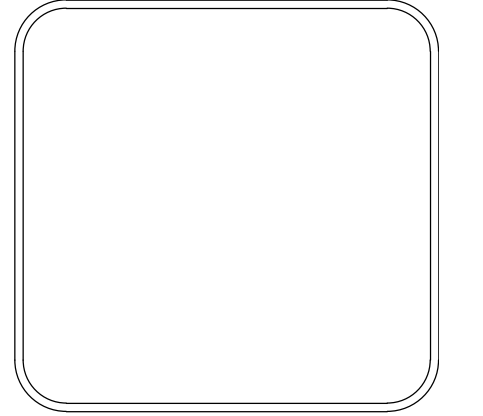
TYPICAL SECTION

| EXISTING                     |          | PROPOSED   |
|------------------------------|----------|--|
| IRON ROD                     | ○ IR     | PROPOSED CONTOUR                                       |
| PK NAIL                      | ○ PK     | PROPOSED SPOT ELEVATION                                |
| R.R. SPIKE                   | ○ RR(Sp) | PROPOSED SPOT CURB ELEVATION                           |
| CONC. MONUMENT               | □ CM     | STORM SEWER - PIPE                                     |
| WATER VALVE                  | ⊗ WV     | STORM SEWER - MITERED END SECTION                      |
| WATER METER                  | □ WM     | STORM SEWER - GRATE INLET                              |
| FIRE HYDRANT                 | ⊕ FH     | STORM SEWER - JUNCTION BOX                             |
| GAS METER                    | ⊕ GM     | STORM SEWER - FLARED END SECTION                       |
| GAS VALVE                    | ⊕ GV     | STORM SEWER - HEADWALL                                 |
| CLEAN-OUT                    | ○ CO     | STORM SEWER - SINGLE WING                              |
| GUARD POST (BOLLARD)         | ● GP     | STORM SEWER - DOUBLE WING                              |
| SIGN POST                    | ⊕        | STORM SEWER - AREA INLET                               |
| BENCHMARK                    | ⊕        | GRADE BREAK LINE                                       |
| STORM SEWER MANHOLE          | ⊕        | HIGH POINT   |
| SANITARY SEWER MANHOLE       | ⊕        | LOW POINT  |
| TELEPHONE MANHOLE            | ⊕        | CUT LINE   |
| ELECTRIC MANHOLE             | ⊕        | FILL LINE  |
| TELEPHONE BOX                | ⊕        | SANITARY SEWER PIPE                                    |
| ELECTRIC BOX                 | ⊕        | SANITARY SEWER MANHOLE                                 |
| CABLE BOX                    | ⊕        | PROPOSED CURB  |
| UTILITY POLE                 | ⊕        | PROPOSED CONCRETE                                      |
| GUY WIRE                     | ⊕        | CONSTRUCTION - ENTRANCE/EXIT                           |
| LIGHT POLE                   | ⊕        | CHECK DAM  |
| POST OR POLE (TYPE AS NOTED) | ⊕        | DIVERSION BERM   |
| MAILBOX                      | ⊕        | DOWNDRAIN STRUCTURE - TEMPORARY                        |
| DECIDUOUS TREE               | ⊕        | ROCK DAM   |
| EVERGREEN/CONIFEROUS TREE    | ⊕        | SEDIMENT BARRIER - SILT FENCE                          |
| BUSH                         | ⊕        | SEDIMENT BARRIER - GRAVEL RING                         |
| PROPERTY LINE                | ⊕        | SEDIMENT BARRIER - BLOCK & GRAVEL                      |
| SETBACK LINE                 | ⊕        | SEDIMENT BARRIER - BLOCK                               |
| EASEMENT LINE                | ⊕        | TEMPORARY SEDIMENT BASIN                               |
| CURB                         | ⊕        | SILT FENCE - TYPE A                                    |
| FENCE                        | ⊕        | SILT FENCE - TYPE B                                    |
| OVERHEAD ELECTRIC            | ⊕        | SILT FENCE - TYPE C                                    |
| OVERHEAD TELEPHONE           | ⊕        | STORM DRAIN OUTLET PROTECTION                          |
| OVERHEAD CABLE               | ⊕        | SURFACE ROUGHENING                                     |
| UNDERGROUND TELEPHONE        | ⊕        | DISTURBED AREA STABILIZATION - TEMPORARY STABILIZATION |
| UNDERGROUND ELECTRIC         | ⊕        | DISTURBED AREA STABILIZATION - TEMPORARY GRASSING      |
| UNDERGROUND CABLE            | ⊕        | DISTURBED AREA STABILIZATION - PERMANENT GRASSING      |
| WATER LINE                   | ⊕        | MATTING/BLANKETS                                       |
| SEWER LINE                   | ⊕        |  |
| GAS LINE                     | ⊕        |  |
| STORM SEWER/CULVERT          | ⊕        |  |
| EDGE OF WOODS                | ⊕        |  |
| CONTOUR LINE                 | ⊕        |  |

| REVISIONS | DATE |
|-----------|------|
|           |      |

CITY OF LITTLE ROCK, ARKANSAS  
CHENAL PKWY AT LOYOLA DR (RIGHT TURN LANE)  
GENERAL NOTES, LEGEND AND QUANTITIES

DEPARTMENT OF PUBLIC WORKS  
CIVIL ENGINEERING  
701 W. MARKHAM  
LITTLE ROCK, ARKANSAS 72201



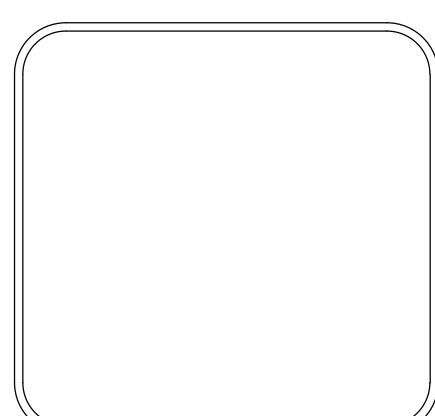
|                           |
|---------------------------|
| <b>DRAWN BY</b>           |
| <b>DESIGNED</b>           |
| <b>CHECKED</b>            |
| <b>DATE</b><br>04-25-2024 |
| <b>SCALE</b><br>N.T.S     |
| <b>PROJECT NO.</b>        |
| <b>SHEET NO.</b><br>C2    |



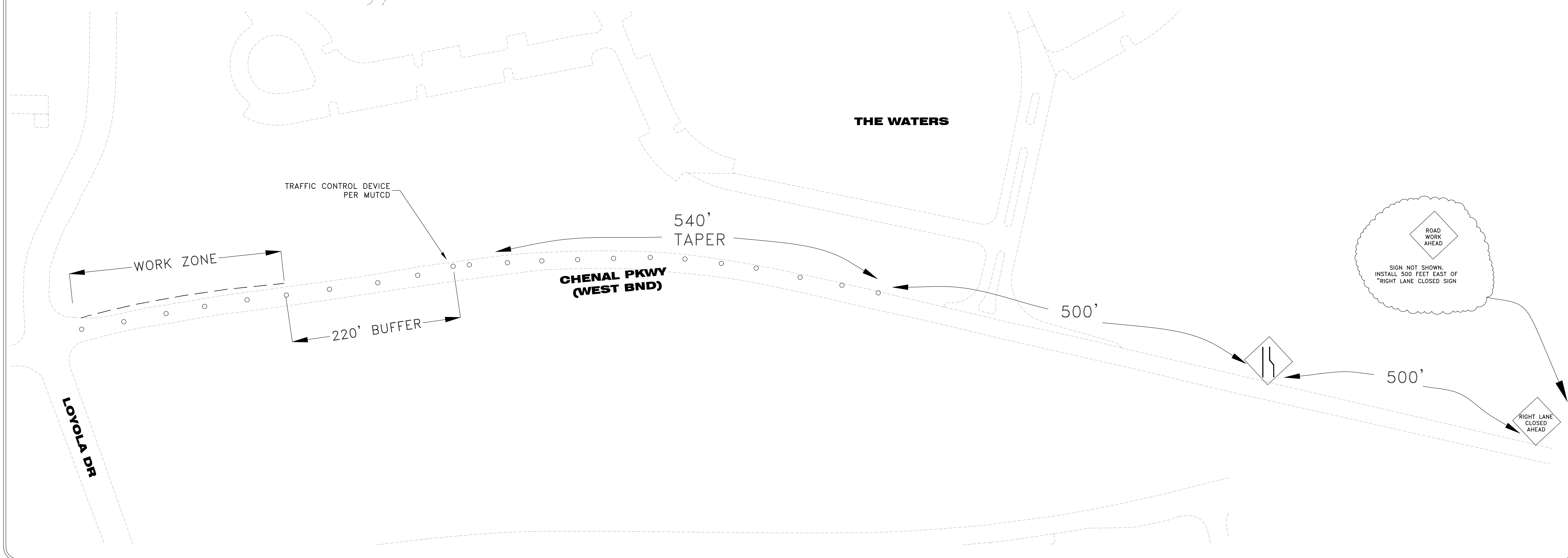
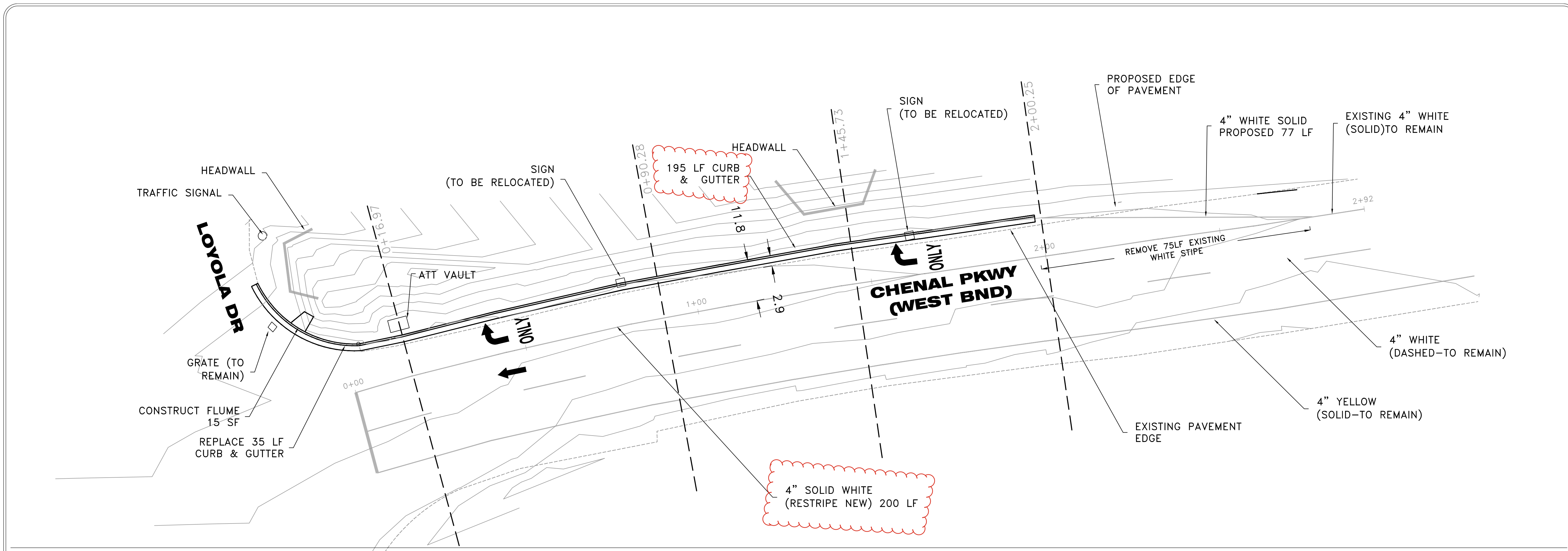
| REVISIONS | DATE |
|-----------|------|
|           |      |
|           |      |

CITY OF LITTLE ROCK, ARKANSAS  
 CHENAL PKWY AT LOYOLA DRIVE  
 PLAN VIEW & MOT

DEPARTMENT OF PUBLIC WORKS  
 CIVIL ENGINEERING  
 701 W. MARKHAM  
 LITTLE ROCK, ARKANSAS 72201



**DRAWN BY**  
**DESIGNED**  
**CHECKED**  
**DATE**  
 04-24-2024  
**SCALE**  
 1"=15'  
**PROJECT NO.**  
**SHEET NO.**  
 C3



| REVISIONS | DATE |
|-----------|------|
|           |      |
|           |      |

CITY OF LITTLE ROCK, ARKANSAS  
 CHENAL PKWY AT LOYOLA DRIVE

CROSS SECTIONS

DEPARTMENT OF PUBLIC WORKS  
 CIVIL ENGINEERING  
 701 W. MARKHAM  
 LITTLE ROCK, ARKANSAS 72201



DRAWN BY

DESIGNED

CHECKED

DATE

04-24-2024

SCALE

1"=15'

PROJECT NO.

SHEET NO.

C4

