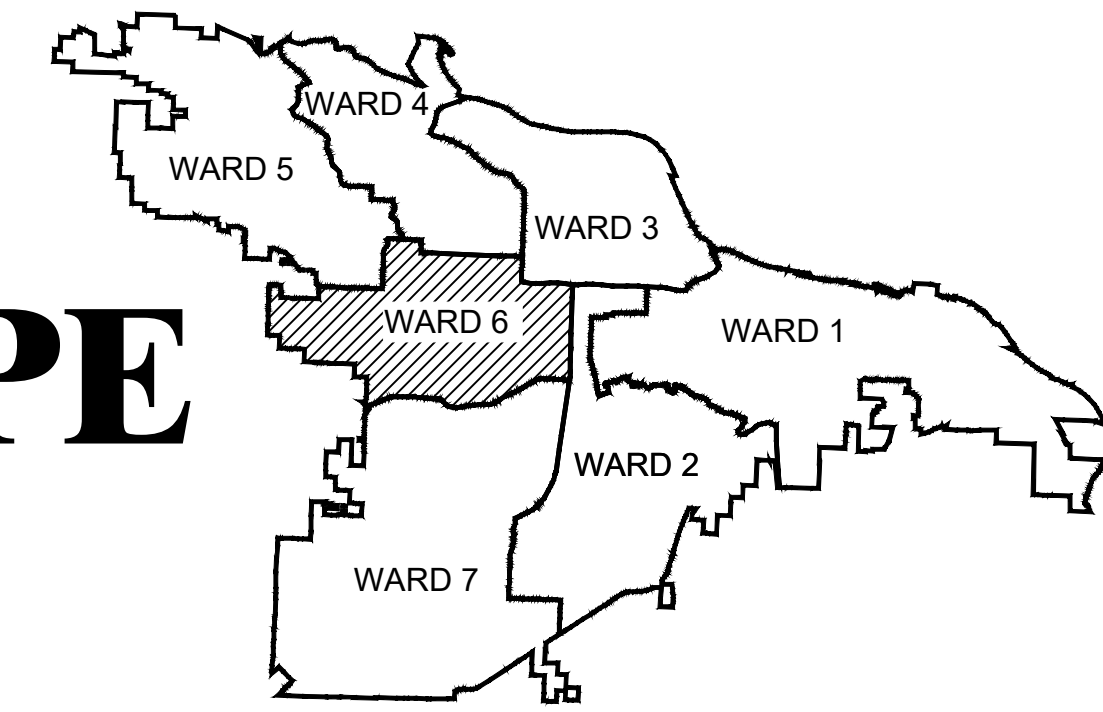


06-17-ST-267

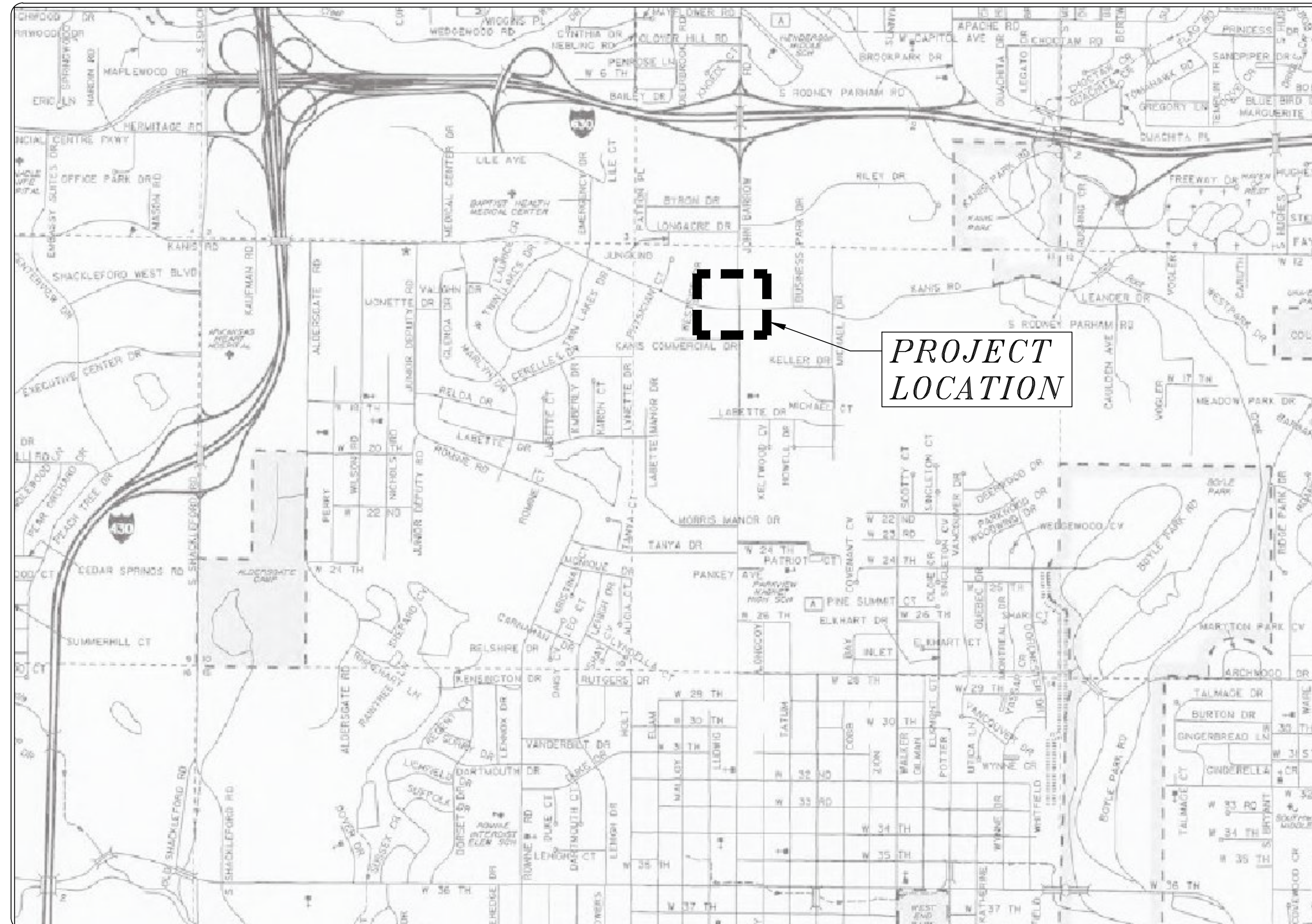
JOHN BARROW RD STREETScape

(JOHN BARROW RD/KANIS RD INTERSECTION)

90% SUBMITTAL



PROJECT LOCATION - WARD 6



JOHN BARROW RD AND KANIS RD INTERSECTION	
Sheet Number	Sheet Title
C0.0	COVER SHEET
C1.1	GN LEGEND AND QUANTITIES SHEET
C2.1	DEMO AND EROSION PLAN
C3.1	SITE PLAN
C4.1	DETAIL SHEET
C4.2	DETAIL SHEET
C4.3	DETAIL SHEET
C4.3	DETAIL SHEET



2019-2021
BOND PROGRAM

DEPARTMENT OF PUBLIC WORKS
CIVIL ENGINEERING
701 WEST MARKHAM STREET
LITTLE ROCK, ARKANSAS 72201



Know what's below.
Call before you dig.



REVISIONS	DATE

CITY OF LITTLE ROCK, ARKANSAS
JOHN BARROW RD STREETScape

COVER SHEET
JOHN BARROW RD & KANIS RD INTERSECTION

DEPARTMENT OF PUBLIC WORKS
CIVIL ENGINEERING
701 W. MARKHAM
LITTLE ROCK, ARKANSAS 72201



90% SUBMITTAL
REVIEW ONLY

DRAWN BY
LCJ
DESIGNED
SBH
CHECKED
SBH
DATE
11-22-24
SCALE
NO SCALE
PROJECT NO.
06-17-ST-267
SHEET NO.
C0.0

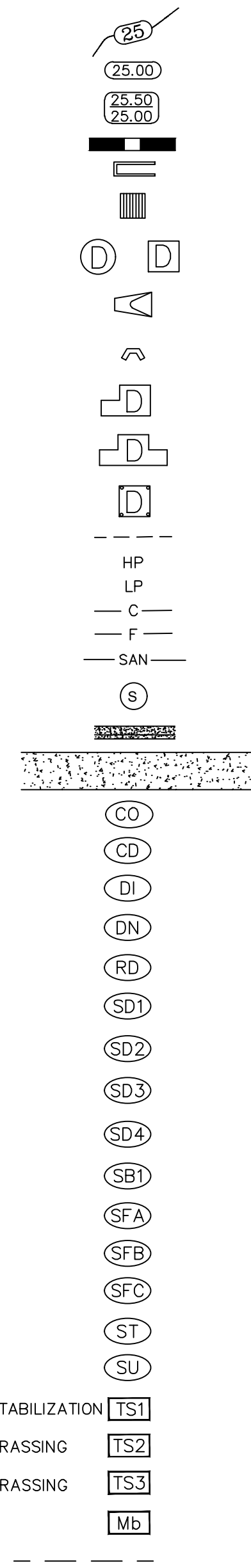
06-17-ST-267			
JOHN BARROW RD AND KANIS RD INTERSECTION - MATERIAL QUANTITIES			
ITEM #	DESCRIPTION	UNIT	QTY
2.01	SITE PREPARATION	LS	1
3.40	TOPSOIL	CY	30
4.01	AGGREGATE BASE COURSE (CLASS 7)	TON	100
8.03	CONCRETE CURB (TYPE A)	LF	414
9.04	CONCRETE SIDEWALK (4" THICK)	SF	2100
11.20	REINFORCED CONCRETE RETAINING WALL	CY	0
14.01	SOLID SODDING- BERMUDA	SY	930
16.01	MAINTENANCE OF TRAFFIC	LS	1
18.50	ACCESS RAMP W TRUNCATED DOMES	SF	532
604.01	HYDROBLASTING FOR PAVEMENT MARKING REMOVAL	SF	252
706.00	RELOCATION OF TRAFFIC SIGNAL HEAD	EA	3
707.00	COUNTDOWN PED SIG HEAD, LED	EA	5
708.00	TRAFFIC SIGNAL CABLE (5C / 14A. W.G.)	LF	400
711.00	CONCRETE PULL BOX (TYPE 2 HD)	EA	4
715.00	TRAFFIC SIGNAL PED. POLE W/ FND	EA	4
711.01	TYPE 2 PULL BOX	EA	4
719.24W	THERMOPLASTIC PAVEMENT MARKING WHITE (12")	LF	154.5
SP	STAMPED AND INTEGRAL COLORED CONCRETE	SF	1905
SP	CONCRETE BAND- CROSSWALKS	SF	845
SP	NEIGHBORHOOD SIGN	LS	1
SP	TREES- 2" CAL.	EA	0
SP	SITE FURNISHINGS- Bench w/dividers	EA	1
SP	SITE FURNISHINGS- Trash Receptacle	EA	1
SP	LIGHTING (up lighting for sign)	EA	3
19.01	FINAL CLEANUP (AS DIRECTED BY ENGINEER)	LS	1
	UTILITY RELOCATION	BY OTHERS	

EXISTING

- IRON ROD ○ IR
- PK NAIL ○ PK
- R.R. SPIKE ○ RR(Sp)
- CONC. MONUMENT □ CM
- WATER VALVE X WV
- WATER METER □ WM
- FIRE HYDRANT ∇ FH
- GAS METER □ GM
- GAS VALVE ⊗ GV
- CLEAN-OUT ○ CO
- GUARD POST (BOLLARD) ● GP
- SIGN POST
- BENCHMARK
- STORM SEWER MANHOLE (D)
- SANITARY SEWER MANHOLE (S)
- TELEPHONE MANHOLE (T)
- ELECTRIC MANHOLE (E)
- TELEPHONE BOX □
- ELECTRIC BOX □
- CABLE BOX □
- UTILITY POLE
- GUY WIRE
- LIGHT POLE
- POST OR POLE (TYPE AS NOTED)
- MAILBOX
- DECIDUOUS TREE
- EVERGREEN/CONIFEROUS TREE
- BUSH
- PROPERTY LINE
- SETBACK LINE
- EASEMENT LINE
- CURB
- FENCE
- OVERHEAD ELECTRIC
- OVERHEAD TELEPHONE
- OVERHEAD CABLE
- UNDERGROUND TELEPHONE
- UNDERGROUND ELECTRIC
- UNDERGROUND CABLE
- WATER LINE
- SEWER LINE
- GAS LINE
- STORM SEWER/CULVERT
- EDGE OF WOODS
- CONTOUR LINE

PROPOSED

- PROPOSED CONTOUR
- PROPOSED SPOT ELEVATION
- PROPOSED SPOT CURB ELEVATION
- STORM SEWER – PIPE
- STORM SEWER – MITERED END SECTION
- STORM SEWER – GRATE INLET
- STORM SEWER – JUNCTION BOX
- STORM SEWER – FLARED END SECTION
- STORM SEWER – HEADWALL
- STORM SEWER – SINGLE WING
- STORM SEWER – DOUBLE WING
- STORM SEWER – AREA INLET
- GRADE BREAK LINE
- HIGH POINT
- LOW POINT
- CUT LINE
- FILL LINE
- SANITARY SEWER PIPE
- SANITARY SEWER MANHOLE
- PROPOSED CURB
- PROPOSED CONCRETE
- CONSTRUCTION – ENTRANCE/EXIT
- CHECK DAM
- DIVERSION BERM
- DOWNDRAIN STRUCTURE – TEMPORARY
- ROCK DAM
- SEDIMENT BARRIER – SILT FENCE
- SEDIMENT BARRIER – GRAVEL RING
- SEDIMENT BARRIER – BLOCK & GRAVEL
- SEDIMENT BARRIER – BLOCK
- TEMPORARY SEDIMENT BASIN
- SILT FENCE – TYPE A
- SILT FENCE – TYPE B
- SILT FENCE – TYPE C
- STORM DRAIN OUTLET PROTECTION
- SURFACE ROUGHENING
- DISTURBED AREA STABILIZATION –TEMPORARY STABILIZATION
- DISTURBED AREA STABILIZATION –TEMPORARY GRASSING
- DISTURBED AREA STABILIZATION –PERMANENT GRASSING
- MATTING/BLANKETS
- CONSTRUCTION LIMITS



REVISIONS	DATE

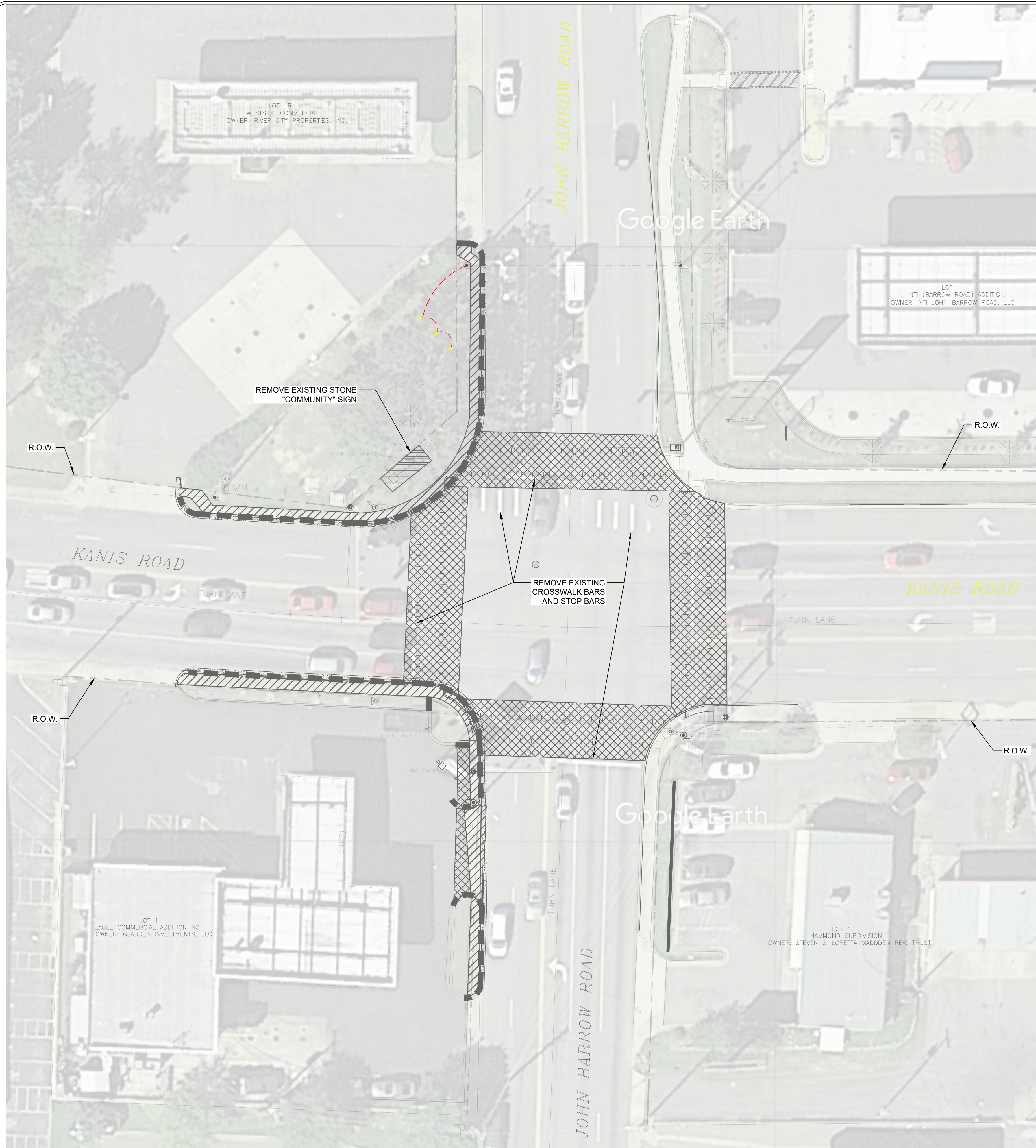
CITY OF LITTLE ROCK, ARKANSAS
JOHN BARROW RD STREETSCAPE
GN LEGEND AND QUANTITIES SHEET
JOHN BARROW RD & KANIS RD INTERSECTION

DEPARTMENT OF PUBLIC WORKS
CIVIL ENGINEERING
701 W. MARKHAM
LITTLE ROCK, ARKANSAS 72201

90% SUBMITTAL
REVIEW ONLY

DRAWN BY
LCJ
DESIGNED
SBH
CHECKED
SBH
DATE
11-22-24
SCALE
NO SCALE
PROJECT NO.
06-17-ST-267
SHEET NO.
C1.1





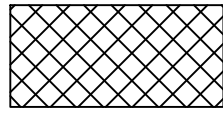
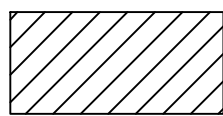
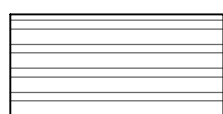

DEMOLITION GENERAL NOTES

- ALL WORK SHALL BE CONFINED TO LIMITS OF CONSTRUCTION SHOWN ON PLANS.
- CONTRACTOR SHALL COORDINATE AND BE IN COMPLIANCE WITH ALL STATE AND LOCAL MUNICIPALITIES AS WARRANTED. CONTRACTOR SHALL NOTIFY OWNER AND LANDSCAPE ARCHITECT PRIOR TO START OF PROJECT.
- ANY DISCREPANCIES FOUND BETWEEN THE DRAWINGS AND SPECIFICATIONS AND EXISTING SITE CONDITIONS OR ANY INCONSISTENCIES OR AMBIGUITIES IN DRAWINGS OR SPECIFICATIONS SHALL BE IMMEDIATELY REPORTED TO THE OWNER AND LANDSCAPE ARCHITECT, IN WRITING, WHO SHALL PROMPTLY ADDRESS SUCH INCONSISTENCIES OR AMBIGUITIES. WORK DONE BY THE CONTRACTOR AFTER HIS DISCOVERY OF SUCH DISCREPANCIES, INCONSISTENCIES, OR AMBIGUITIES SHALL BE DONE AT THE CONTRACTOR'S RISK.
- DEVIATION FROM THESE PLANS AND NOTES WITHOUT THE PRIOR CONSENT OF THE OWNER, HIS/ HER REPRESENTATIVE, OR THE LANDSCAPE ARCHITECT MAY BE CAUSE FOR THE WORK TO BE DESIGNATED UNACCEPTABLE.
- THE CONTRACTOR SHALL IMMEDIATELY REPORT TO THE OWNER AND LANDSCAPE ARCHITECT ANY UNFORESEEN OR ADVERSE CONDITIONS DISCOVERED DURING DEMOLITION OPERATIONS.
- ALL TRENCHES AND/OR VOIDS CREATED BY THE REMOVAL OF EXISTING STRUCTURES & SITE ELEMENTS SHALL BE BACKFILLED PER LOCAL AND STATE REGULATIONS.
- THE LOCATION AND SIZE OF KNOWN EXISTING ABOVE GROUND UTILITIES ARE NOT SHOWN ON THE SURVEY. THE CONTRACTOR IS RESPONSIBLE FOR HORIZONTALLY AND VERTICALLY LOCATING AND PROTECTING ALL PUBLIC AND PRIVATE UTILITIES WHICH LIE IN OR ARE ADJACENT TO THE CONSTRUCTION SITE. AT LEAST 48 HOURS PRIOR TO ANY DEMOLITION, GRADING, OR CONSTRUCTION ACTIVITY CALL ARKANSAS 811 AND COORDINATE UTILITY WORK WITH PULASKI COUNTY FOR COMPLIANCE WITH LOCAL CODES AND ORDINANCES.
- THE CONTRACTOR SHALL PROTECT ALL EXISTING POWER POLES, MANHOLES, TELEPHONE RISERS, WATER VALVES, POND WALL, ETC., DURING ALL CONSTRUCTION PHASES, UNLESS NOTED OTHERWISE. THE CONTRACTOR SHALL REPAIR, AT HIS OWN EXPENSE, ANY EXISTING UTILITIES DAMAGED DURING CONSTRUCTION.
- CONTRACTOR IS RESPONSIBLE FOR VERIFYING AND/OR OBTAINING ALL REQUIRED PERMITS AND APPROVALS PRIOR TO COMMENCING ANY PROJECT WORK.
- ALL DEMOLITION DEBRIS AND OTHER EXCESS MATERIAL SHALL BE HAULED OFF-SITE AS DIRECTED BY THE OWNER AND PROPERLY DISPOSED OF IN A LEGAL MATTER, UNLESS OTHERWISE NOTED.
- THE CONTRACTOR SHALL COORDINATE AND BE RESPONSIBLE FOR THE STAGING AND REMOVAL OF ALL DEMOLITION ITEMS.
- THE CONTRACTOR SHALL BE RESPONSIBLE FOR REPAIRING ANY DAMAGE RESULTING FROM CONSTRUCTION ACTIVITY TO EXISTING ELEMENTS THAT ARE TO REMAIN.

NOTES

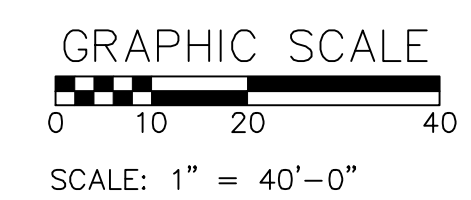
- REFER TO SITE PLAN SHEETS C3.1 FOR ADDITIONAL INFORMATION.
- ALL BUSINESSES AND RESIDENCES TO REMAIN OPEN, OPERABLE AND ACCESSIBLE THROUGHOUT CONSTRUCTION. TEMPORARY WALKS, BARRIERS AND DIRECTIONAL SIGNAGE TO BE INSTALLED AS NEEDED TO ASSURE SAFE VEHICULAR AND PEDESTRIAN ACCESS.
- CONTRACTOR TO COMPLETE ONE BLOCK AT A TIME FROM DEMOLITION THROUGH INSTALLATION OF CURB AND SIDEWALKS. TOPSOIL AND LANDSCAPE MAY BE INSTALLED AT ONCE THROUGHOUT PROJECT.
- ALL UNDERGROUND UTILITIES TO REMAIN UNLESS NOTED OTHERWISE ON THESE PLANS.
- ALL UTILITIES, VALVES, METERS, FIRE HYDRANTS, THAT FALL INSIDE THE PROPOSED STREETSCAPE PROJECT ARE TO BE FLUSH WITH THE PROPOSED FINISHED GRADE.
- CONTRACTOR IS RESPONSIBLE FOR COORDINATING MARKING OF THE UTILITIES WITH 'ONE-CALL' AND THE CITY OF LITTLE ROCK.
- PROVIDE 36" ACCESSIBLE ROUTE AROUND SIGNAL POLES. CONTACT CITY FOR REVIEW PRIOR TO INSTALLATION OF SIDEWALKS / RAMPS.
- REMOVE EXISTING CROSSWALK BARS AND STOP BARS

LEGEND

-  REMOVE STREET (ASPHALT)
-  REMOVE SIDEWALK AND DRIVEWAY (CONCRETE)
-  REMOVE EXISTING NEIGHBORHOOD SIGN
-  REMOVE CONCRETE CURB & GUTTER

EROSION NOTES

- PROVIDE SILT FENCE EROSION CONTROL, IF NECESSARY.
- ANY ACCIDENTAL RELEASE OF SEDIMENT FROM THE SITE SHALL BE CLEANED UP BY THE CONTRACTOR.
- PRIOR TO COMPLETION OF THE PROJECT, CONTRACTOR SHALL CLEAN STREET GUTTERS WITHIN SCOPE OF WORK.
- EROSION CONTROL MEASURES SHALL BE PROVIDED BY THE CONTRACTOR. CONTRACTOR TO PROVIDE LOCATION OF EROSION CONTROL METHODS FOR OWNER'S APPROVAL. PRIOR TO PROJECT COMMENCEMENT.



NOTE: ABOVE SCALE REPRESENTS A PRINTED 11" X 17" SHEET SIZE.

REVISIONS	DATE

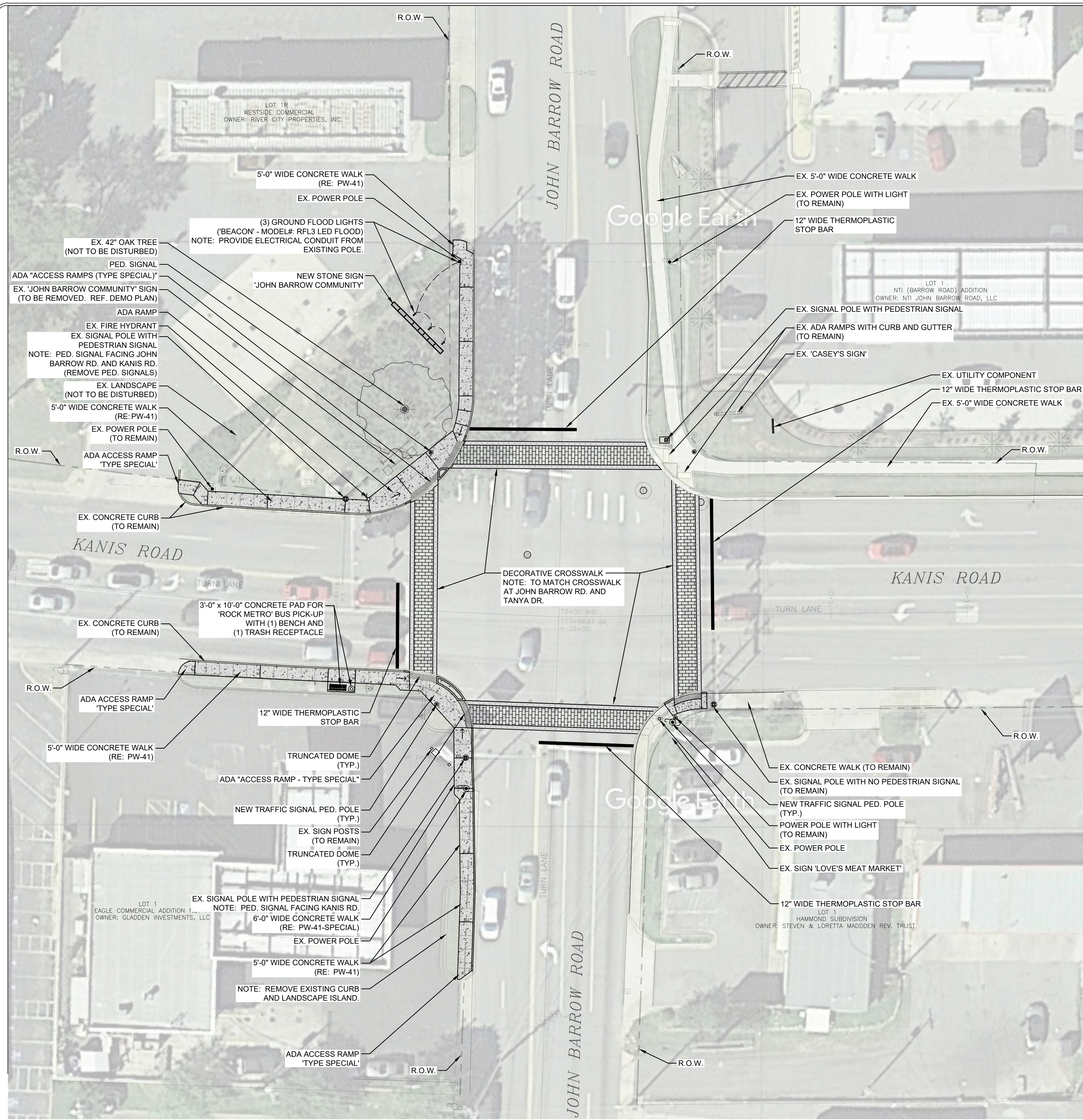
CITY OF LITTLE ROCK, ARKANSAS
JOHN BARROW RD STREETSCAPE
DEMOLITION AND EROSION PLAN
JOHN BARROW RD & KANIS RD INTERSECTION

DEPARTMENT OF PUBLIC WORKS
CIVIL ENGINEERING
701 W. MARKHAM
LITTLE ROCK, ARKANSAS 72201



90% SUBMITTAL
REVIEW ONLY

DRAWN BY
LCJ
DESIGNED
SBH
CHECKED
SBH
DATE
11-22-24
SCALE
1" = 40'-0"
PROJECT NO.
06-17-ST-267
SHEET NO.
C2.1



LEGEND

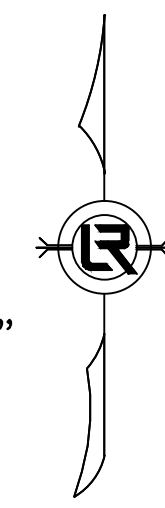
- 4" THICK CONCRETE WALK
- COLORED AND PATTERNED CONCRETE CROSSWALK (TYP.)
- CONCRETE CROSSWALK BANDS (BOTH SIDES OF CROSSWALK) (TYP.)

NOTES

1. REFER TO SHEET C1.1 FOR ADDITIONAL INFORMATION.
2. ALL BUSINESSES AND RESIDENCES TO REMAIN OPEN, OPERABLE AND ACCESSIBLE THROUGHOUT CONSTRUCTION. TEMPORARY WALKS, BARRIERS AND DIRECTIONAL SIGNAGE TO BE INSTALLED AS NEEDED TO ASSURE SAFE VEHICULAR AND PEDESTRIAN ACCESS.
3. CONTRACTOR TO COMPLETE ONE CORNER SECTION AT A TIME FROM DEMOLITION THROUGH INSTALLATION OF CURB AND SIDEWALKS. TOPSOIL AND LANDSCAPE MAY BE INSTALLED AT ONCE THROUGHOUT PROJECT.
4. ALL UNDERGROUND UTILITIES TO REMAIN UNLESS NOTED OTHERWISE ON THESE PLANS.
5. ALL UTILITIES, VALVES, METERS, FIRE HYDRANTS, THAT FALL INSIDE THE PROPOSED STREETScape PROJECT ARE TO BE FLUSH WITH THE PROPOSED FINISHED GRADE.
6. CONTRACTOR IS RESPONSIBLE FOR COORDINATING MARKING OF THE UTILITIES WITH 'ONE-CALL' AND THE CITY OF LITTLE ROCK.
7. PROVIDE 36" ACCESSIBLE ROUTE AROUND SIGNAL POLES. CONTACT CITY FOR REVIEW PRIOR TO INSTALLATION OF SIDEWALKS / RAMPS.
8. PCE WILL BE REQUIRED FOR ANY WORK INCLUDING WALKS, LIGHT POLES, ETC. WITHIN R.O.W.

SIDEWALK NOTES

1. SIDEWALK TO BE NO MORE THAN 5% LONGITUDINAL SLOPE ACROSS SLOPE 2% MAX.
2. CONTRACTOR TO PROVIDE STAKEOUT OF SIDEWALK / BOARDWALK DESIGN FOR APPROVAL PRIOR TO CONSTRUCTION.



NOTE: ABOVE SCALE REPRESENTS A PRINTED 11" X 17" SHEET SIZE.

REVISIONS	DATE

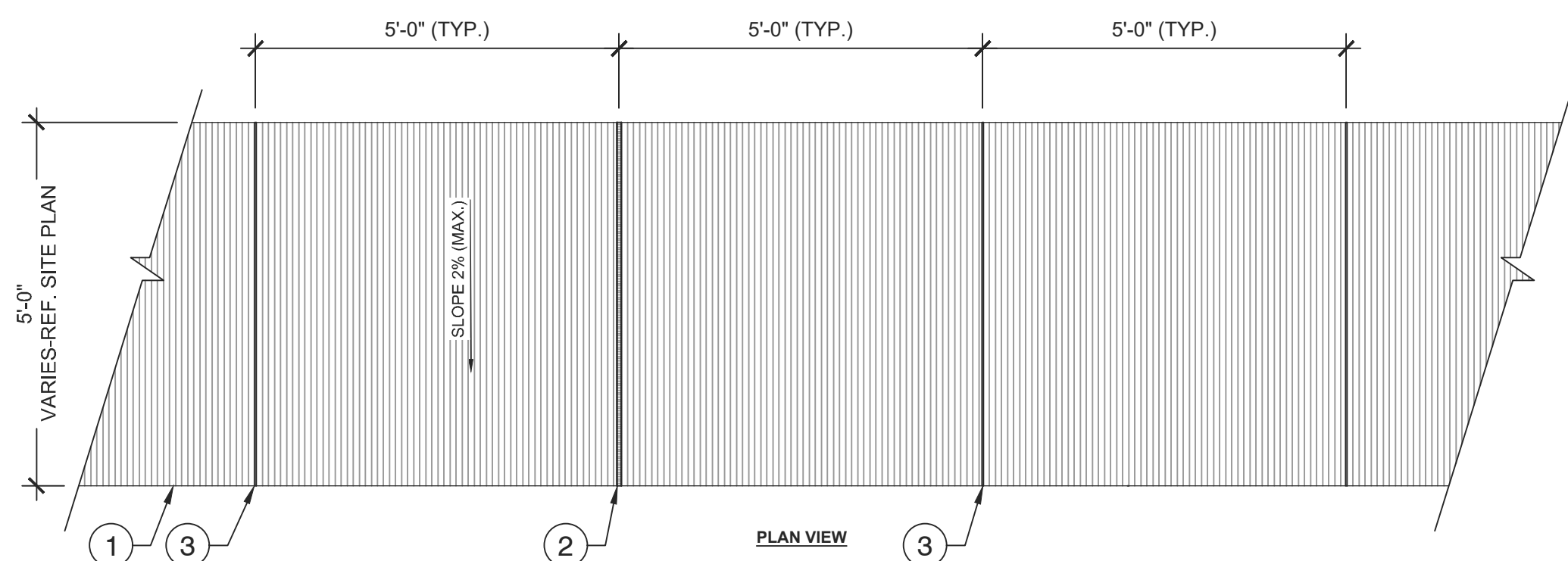
CITY OF LITTLE ROCK, ARKANSAS
JOHN BARROW RD STREETScape
SITE PLAN
JOHN BARROW RD & KANIS RD INTERSECTION

DEPARTMENT OF PUBLIC WORKS
CIVIL ENGINEERING
701 W. MARKHAM
LITTLE ROCK, ARKANSAS 72201



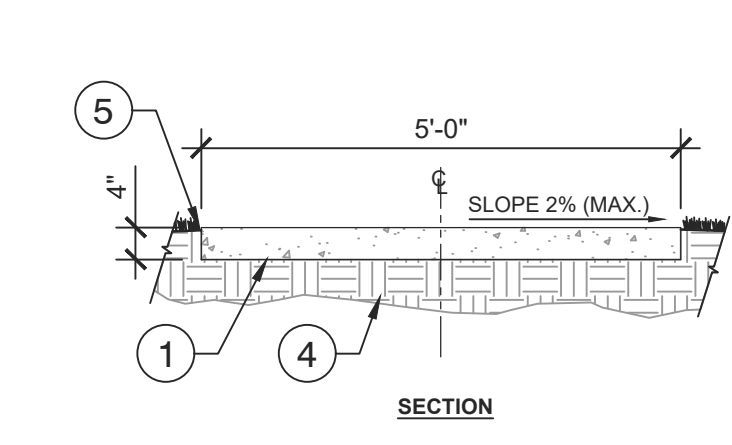
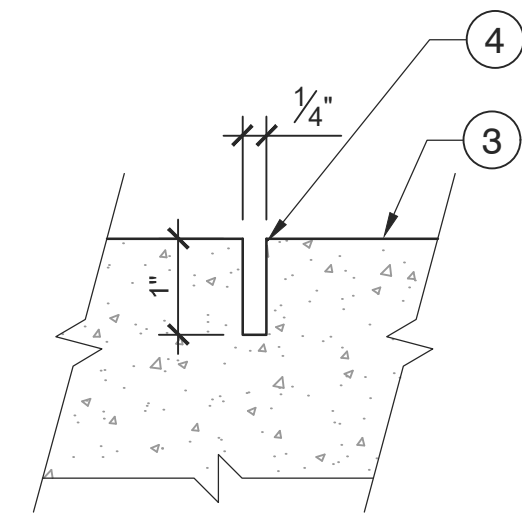
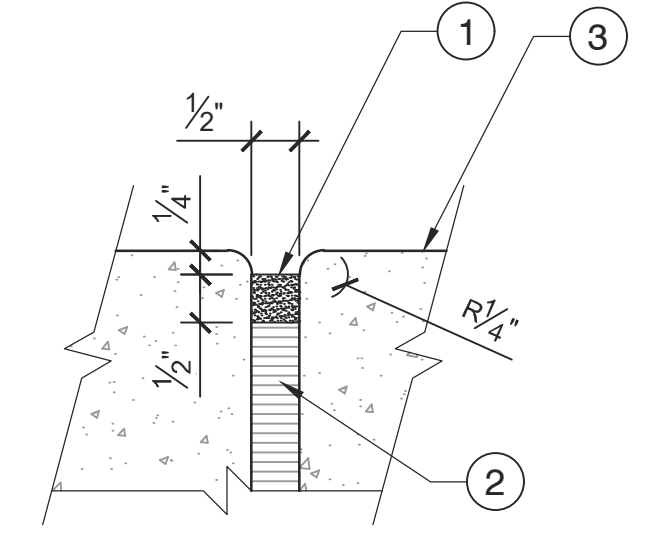
90% SUBMITTAL REVIEW ONLY

DRAWN BY
LCJ
DESIGNED
SBH
CHECKED
SBH
DATE
11-22-24
SCALE
1" = 40'-0"
PROJECT NO.
06-17-ST-267
SHEET NO.
C3.1



- NOTES:**
1. PROVIDE EXPANSION JOINTS WHERE NEW CONCRETE WALK ABUTS CONCRETE DRIVEWAYS, CURBS, EXISTING SIDEWALKS OR BUILDINGS.
 2. 1/4" WIDE x 1" DEPTH CONTROL JOINT. JOINTS MUST BE SAW CUT WITHIN 6-18 HOURS AFTER PLACEMENT.
 3. CONTROL JOINTS SHOULD BE A DEPTH OF ONE-QUARTER THE SLAB THICKNESS, WITH A MINIMUM OF 1".
 4. REFER TO SITE PLAN FOR LOCATION OF EXPANSION JOINTS.

- KEY:**
- 1 1/2" x 1/2" CONTINUOUS SELF LEVELING SEALANT.
 - 2 PREMOLDED 1/2" EXPANSION JOINT FILLER, NOMAFLEX OR APPROVED EQUAL.
 - 3 CONCRETE WALK.
 - 4 1/4" WIDE x 1" DEPTH (MIN.) SAW-CUT CONTROL JOINT.



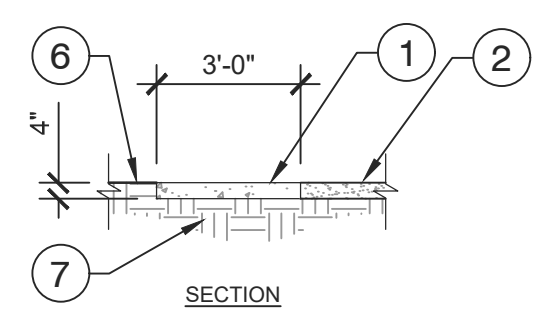
- KEY:**
- 1 4" CONCRETE, 3000 PSI, MEDIUM BROOM FINISH PERPENDICULAR TO DIRECTION OF TRAVEL ON SINGLE RUN WALKWAYS.
 - 2 EXPANSION JOINT - 1/2" EXPANSION JOINT FILLER MATERIAL, NOMAFLEX OR APPROVED EQUAL. REF. DETAILS SHEET AND SITE PLAN FOR JOINT LOCATIONS.
 - 3 CONCR. JOINT - 1/4" WIDE x 1" DEPTH. JOINTS MUST BE CUT WITHIN 24 HOURS AFTER CONCRETE PLACEMENT. REF. DETAILS SHEET.
 - 4 COMPACTED SUBGRADE AT 95% MAX. DENSITY.
 - 5 FINISHED GRADE, 1" BELOW PAVEMENT ELEVATION.

- NOTES:**
1. REFER TO SITE PLAN FOR LOCATIONS OF EXPANSION AND CONTROL JOINTS.
 2. CONTRACTOR SHALL INSTALL AND SPACE EXPANSION JOINTS EVERY 25'-0" (TYP.).
 3. CONTRACTOR SHALL INSTALL AND SPACE CONTROL JOINTS EVERY 5'-0" (TYP.).

1 TYPICAL 5'-0" WIDE CONCRETE WALK
1/2" = 1'-0"

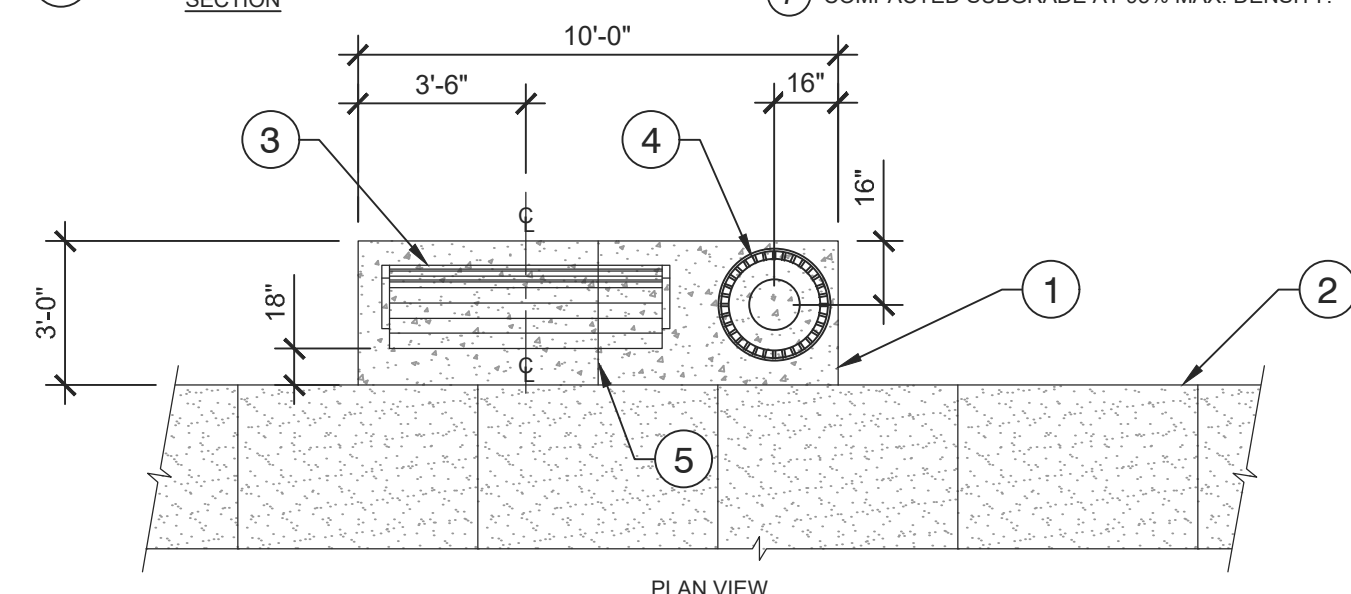
2 TYPICAL CONSTRUCTION JOINTS DETAIL
6" = 1'-0"

- NOTES:**
1. REFER TO SITE PLAN FOR CONCRETE PAD SITTING AREA LOCATION.
 2. CONTRACTOR TO ANCHOR BENCH EACH LEGS TO CONCRETE PAD WITH STAINLESS STEEL EXPANSION ANCHORS PROVIDED AND AS PER MANUFACTURER'S DIRECTIONS.

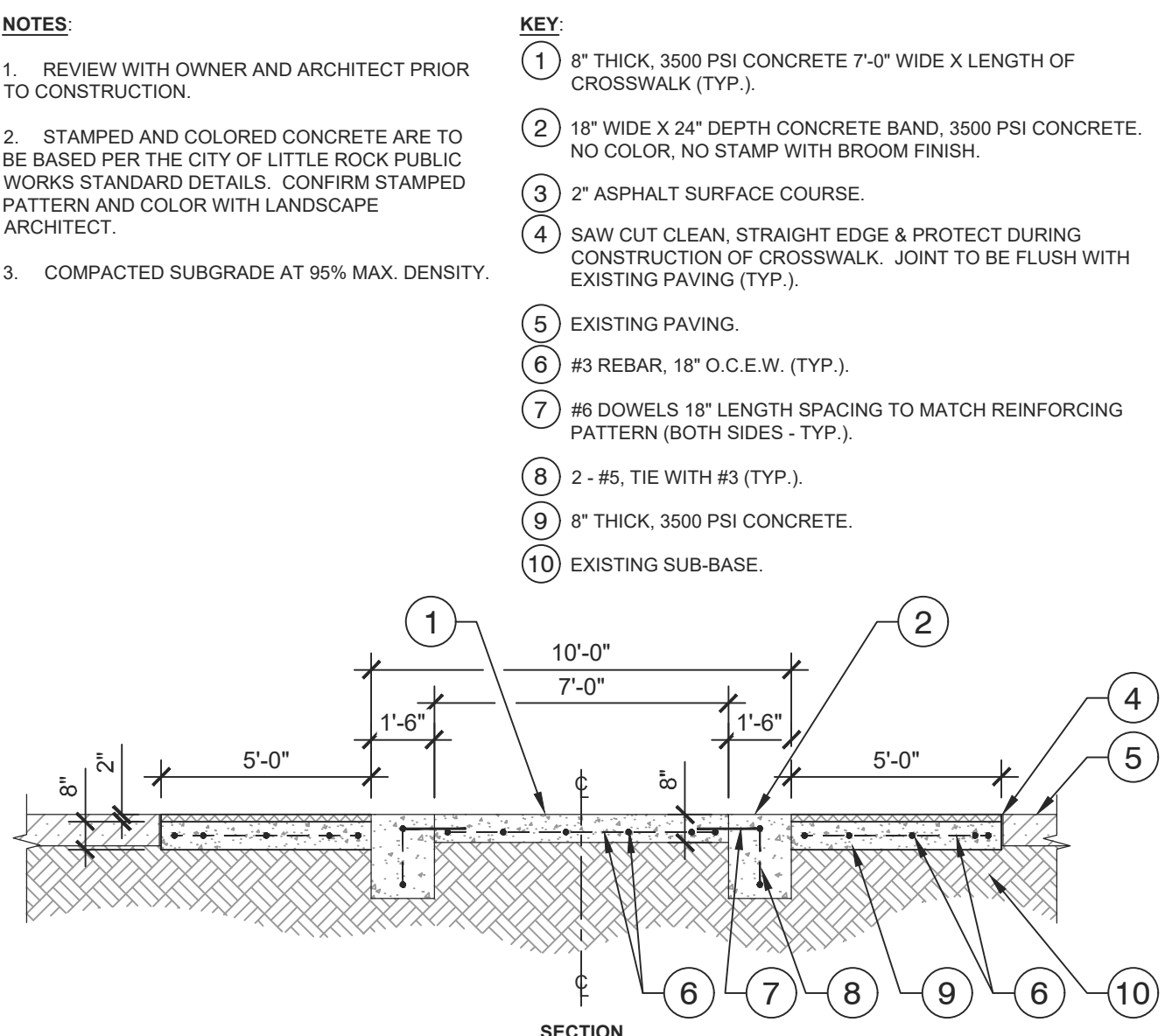


- KEY:**
- 1 4" THICK CONCRETE PAD, 3000 PSI, MEDIUM BROOM FINISH PERPENDICULAR TO DIRECTION OF WALK.
 - 2 CONCRETE WALK. REF. CONCRETE WALK DETAIL AND SITE PLAN.
 - 3 BENCH - SET BENCH A MIN. 18" FROM FRONT EDGE OF WALK AND 3'-6" FROM SIDE EDGE OF CONCRETE PAD. BENCH PROVIDE BY OWNER.
 - 4 TRASH RECEPTACLE - SET TRASH RECEPTACLE 16" FROM BACK EDGE AND 16" FROM SIDE EDGE OF CONCRETE PAD. TRASH RECEPTACLE PROVIDED BY OWNER.
 - 5 CONTROL JOINT - 1/4" WIDE x 1" DEPTH. REF. CONTROL JOINT DETAIL.
 - 6 FINISH GRADE.
 - 7 COMPACTED SUBGRADE AT 95% MAX. DENSITY.

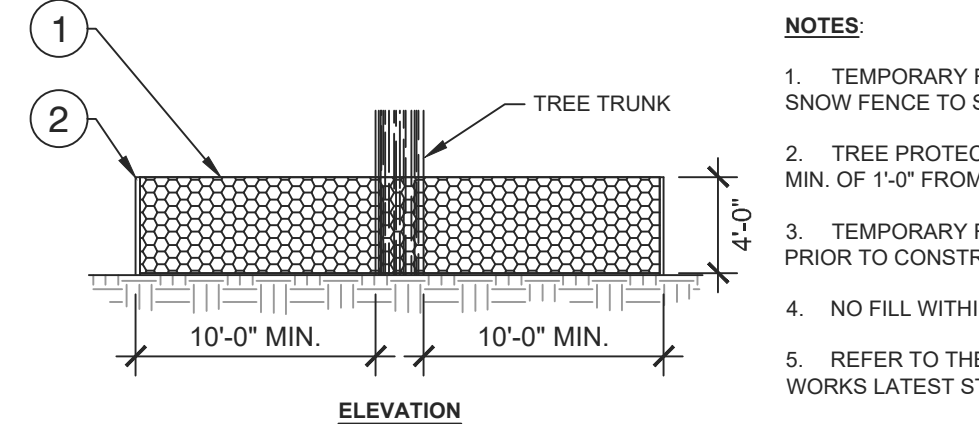
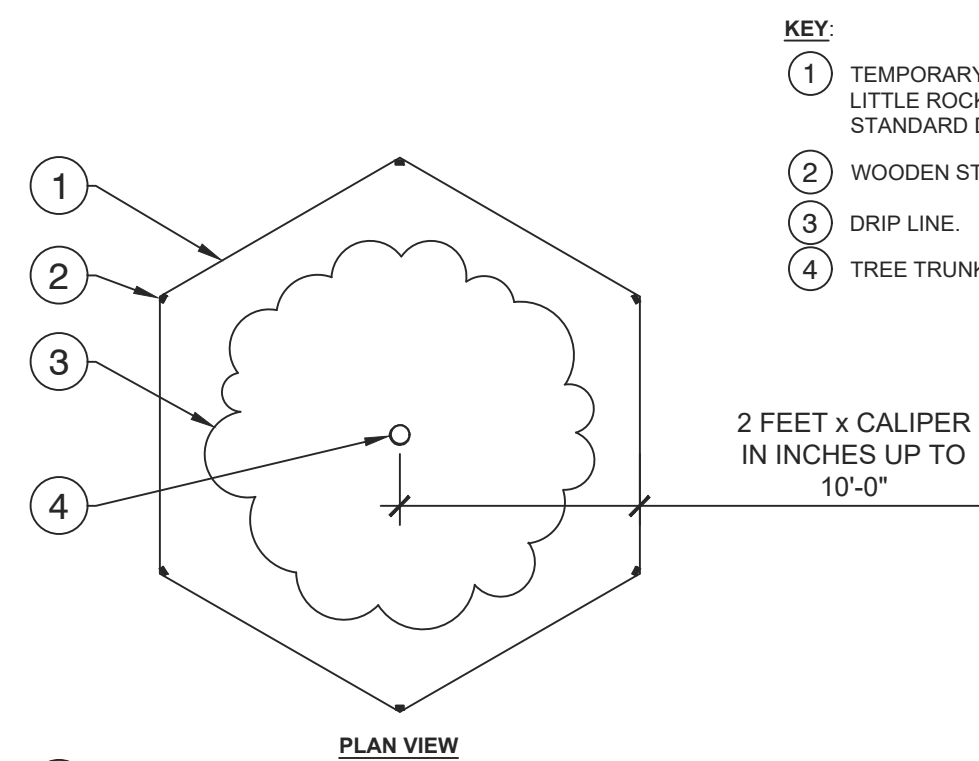
- NOTES:**
1. REVIEW WITH OWNER AND ARCHITECT PRIOR TO CONSTRUCTION.
 2. STAMPED AND COLORED CONCRETE ARE TO BE BASED PER THE CITY OF LITTLE ROCK PUBLIC WORKS STANDARD DETAILS. CONFIRM STAMPED PATTERN AND COLOR WITH LANDSCAPE ARCHITECT.
 3. COMPACTED SUBGRADE AT 95% MAX. DENSITY.



3 CONCRETE PAD SITTING AREA
1/4" = 1'-0"



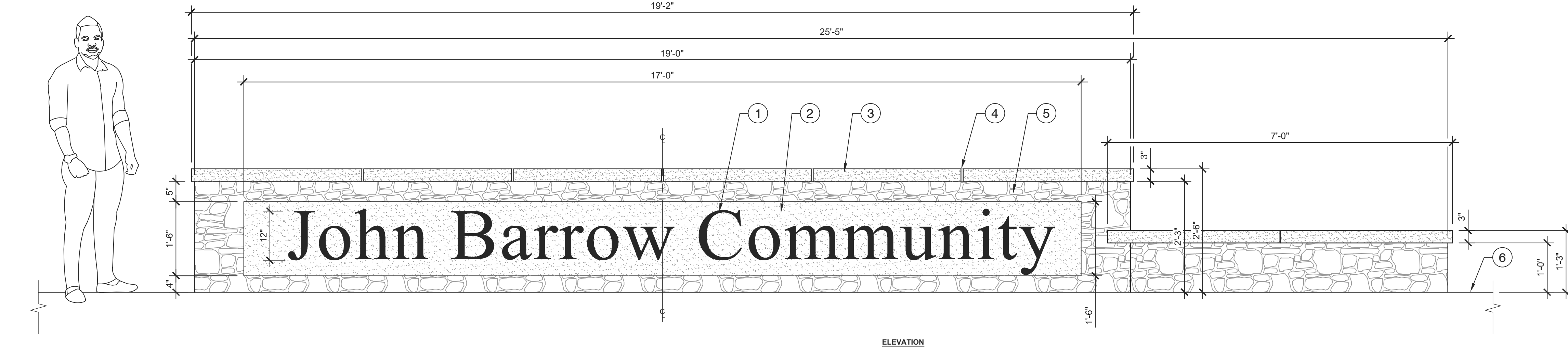
4 TYPICAL CROSSWALK SECTION DETAIL
1/4" = 1'-0" P-ST-JOH1-07



5 TYPICAL TREE PROTECTION FENCING DETAIL
1/8" = 1'-0"

- KEY:**
- 1 TEMPORARY FENCING AS PER THE CITY OF LITTLE ROCK PUBLIC WORKS LATEST STANDARD DETAILS - PW-73.
 - 2 WOODEN STAKE (TYP.).
 - 3 DRIP LINE.
 - 4 TREE TRUNK.

- NOTES:**
1. TEMPORARY FENCING TO BE POLYETHYLENE SNOW FENCE TO SURROUND EXISTING TREES.
 2. TREE PROTECTION SHALL BE PLACED OUT A MIN. OF 1'-0" FROM DRIP LINE.
 3. TEMPORARY FENCING SHALL BE PLACED PRIOR TO CONSTRUCTION IN AREA.
 4. NO FILL WITHIN 10'-0" OF TRUNK OF TREE.
 5. REFER TO THE CITY OF LITTLE ROCK PUBLIC WORKS LATEST STANDARD DETAILS - PW-73.



6 JOHN BARROW COMMUNITY SIGN
3/4" = 1'-0"

- KEY:**
- 1 12" HEIGHT ENGRAVED LETTERS.
 - 2 PRECAST STONE INSERT WITH ENGRAVED LETTERS - 'JOHN BARROW COMMUNITY'.
 - 3 NEW STONE SIGN WITH PRECAST STONE CAP.
 - 4 1/2" WIDE MORTOR JOINTS (TYP.).
 - 5 NATURAL STONE - TO BE DETERMINED BY LANDSCAPE ARCHITECT. CONTRACTOR TO PROVIDE SAMPLES FOR APPROVAL.
 - 6 FINISH GRADE.

- NOTES:**
1. CONTRACTOR TO COORDINATE WITH OWNER AND LANDSCAPE ARCHITECT PRIOR TO CONSTRUCTION.
 2. SHOP DRAWINGS TO BE PROVIDED TO OWNER AND LANDSCAPE ARCHITECT FOR FINAL APPROVAL.

REVISIONS	DATE

CITY OF LITTLE ROCK, ARKANSAS
JOHN BARROW RD STREETSCAPE
DETAIL SHEET
JOHN BARROW RD & KANIS RD INTERSECTION

DEPARTMENT OF PUBLIC WORKS
CIVIL ENGINEERING
701 W. MARKHAM
LITTLE ROCK, ARKANSAS 72201

90% SUBMITTAL
REVIEW ONLY

DRAWN BY
LCJ
DESIGNED
SBH
CHECKED
SBH
DATE
11-22-24
SCALE

PROJECT NO.
06-17-ST-267
SHEET NO.
C4.1



TITLE ACCESS RAMP (GENERAL NOTES & RAMP CRITERIA)	Issue Date	PW-48 Revision Date
	AUG. 2006	APR 2015

- (A) THE SLOPE OF THE RAMP SHALL NOT EXCEED 1:12 (8.33%). CONTRACTORS SHOULD FORM RAMPS AT A GRADE LOWER THAN 8.33% TO ALLOW ROOM FOR CONSTRUCTION TOLERANCES. POURING AND FINISHING RAMPS WITHOUT THE AID OF A DIGITAL LEVEL IN CHECKING GRADES IS DISCOURAGED, BECAUSE CONTRACTORS WILL BE REQUIRED TO REMOVE ANY RAMP WITH GRADES EXCEEDING REQUIREMENTS SHOWN IN STANDARD DETAILS. RAMP SURFACE SHALL BE COURSE BROOMED TRANSVERSE TO THE SLOPE. GROOVES/JOINTS ARE NOT TO BE INSTALLED IN THE RAMP SURFACE.
- (B) THE MINIMUM THICKNESS OF RAMPS, SIDEWALKS AND LANDING AREAS SHALL BE 4 INCHES. CONCRETE TO BE MINIMUM 3000 p.s.i.. EXPOSED AGGREGATE CONCRETE SHALL NOT BE USED ON SURFACE RAMPS. WIRE REINFORCEMENT IS NOT REQUIRED IN RAMPS OR SIDEWALKS UNLESS SPECIFICALLY STATED IN DESIGN PLANS.
- (C) THE MAXIMUM RAMP AND LANDING CROSS-SLOPE SHALL BE 2.0% UNLESS THE STREET GRADE EXCEEDS 2.0%. THEN THE CROSS-SLOPE OF THE RAMP SHALL MATCH THE STREET RUNNING GRADE. DO NOT PROVIDE TRANSITIONAL WARPS IN THE GUTTER, RAMP SURFACE OR LANDING AREA. THE STREET RUNNING GRADE IS MEASURED DIRECTLY IN FRONT OF THE RAMP WITH A 4 FOOT DIGITAL LEVEL AND IS THE GRADE OF THE STREET PERPENDICULAR TO THE RAMP SLOPE WHERE THE ASPHALT ABUTS THE GUTTER.
- (D) GUTTER SHALL NOT EXCEED 5.0% DIRECTLY IN FRONT OF A CURB RAMP. NO LIP OR VERTICAL SEPARATION SHALL BE INSTALLED BETWEEN THE GUTTER AND THE RAMP.
- (E) THE MINIMUM RAMP WIDTH SHALL BE 4 FEET. A THREE FOOT WIDE RAMP IS ACCEPTABLE ONLY IN THE CASE OF AN OBSTRUCTION AND WITH PUBLIC WORKS WRITTEN APPROVAL. CURB RAMPS, SIDEWALKS, MEDIAN CUTS AND CROSSWALKS SHALL BE ALIGNED UNLESS NOT POSSIBLE TO AID IMPAIRED USERS.
- (F) RAMP SIDE FLARES SHALL NOT EXCEED 10.0% RELATIVE TO THE STREET. (EXAMPLE: IF THE STREET SLOPE IS 5.0% THEN THE SIDE FLARE SLOPE MAY BE UP TO 15.0% ON THE LOW SIDE TO ALLOW THE FLARE TO MATCH CURB HEIGHT IN A REASONABLE DISTANCE. THE SIDE FLARE SLOPE ON THE HIGH SIDE OF THE RAMP WOULD REMAIN AT 10.0% OR LESS GRADE SINCE IT WILL MATCH CURB HEIGHT QUICKLY).
- (G) A MINIMUM 3 FOOT LONG SIDEWALK TRANSITION SHALL BE PROVIDED WHEN MATCHING CURB RAMP/LEVEL LANDING TO EXISTING SIDEWALKS WITH CROSS EXCEEDING 2.0%. ADDITIONAL TRANSITION LENGTH MAY BE REQUIRED WHEN MATCHING MATCHING TO EXISTING SIDEWALK WITH SEVERE CROSS SLOPE.
- (H) MEDIAN CUTS: SHALL BE 6 FEET WIDE FOR TWO-WAY PEDESTRIAN TRAFFIC ALIGNED WITH CROSSING. MEDIAN CUT CROSS SLOPE SHALL BE MAXIMUM 2.0% OR MATCH STREET GRADE WHEN ROADWAY SLOPE EXCEEDS 2.0%.
- (I) RAMP LENGTH IS LIMITED TO 15 FEET.

GENERAL NOTES FOR DETECTABLE WARNING DEVICES

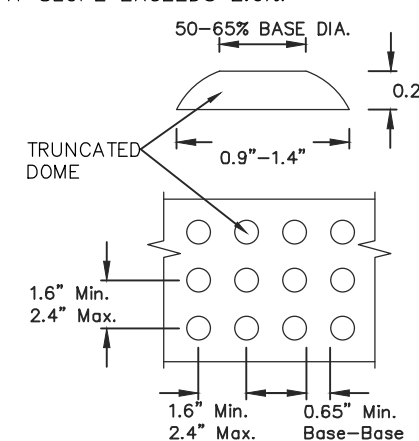
THE DETECTABLE WARNING DEVICE SHALL BE LOCATED SO THAT THE NEAREST EDGE OF THE DEVICE IS 6 TO 8 INCHES FROM THE FACE OF CURB.

TRUNCATED DOMES IN THE DETECTABLE WARNING SURFACE SHALL MEET THE REQUIREMENTS OF THE GEOMETRIC CONFIGURATION SHOWN.

DOMES SHALL BE ALIGNED ON A SQUARE GRID IN THE PREDOMINANT DIRECTION OF TRAVEL TO PERMIT THE WHEELS TO ROLL BETWEEN DOMES.

DETECTABLE WARNING DEVICE SHALL BE 24 INCHES IN THE DIRECTION OF TRAVEL AND EXTEND THE FULL WIDTH OF THE CURB RAMP OR FLUSH SURFACE.

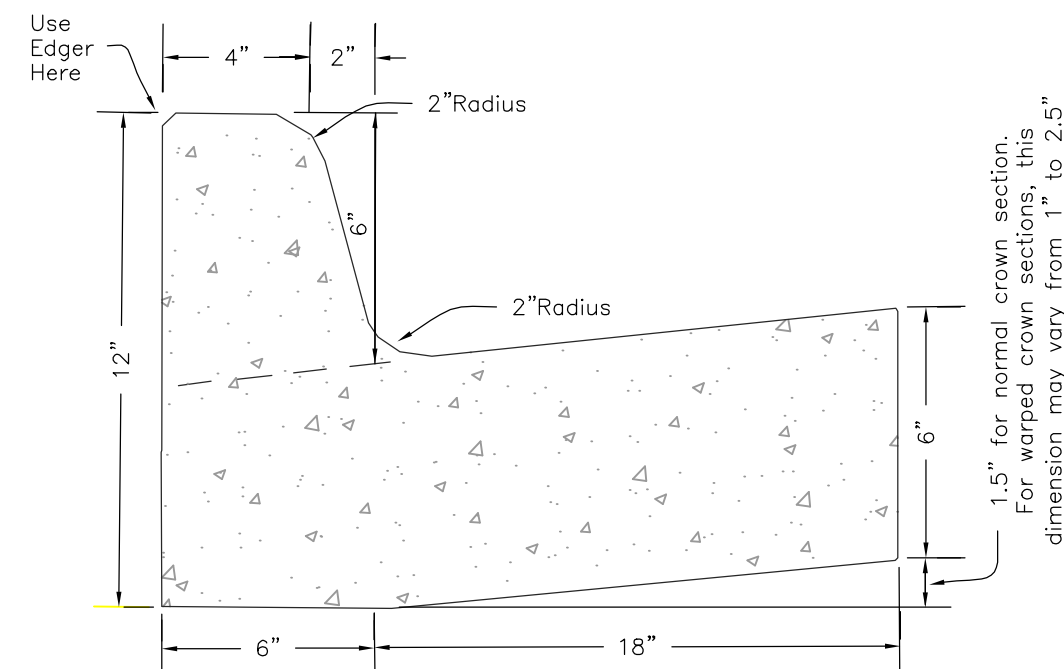
DETECTABLE WARNING DEVICE SHALL BE ON THE AHTD QUALIFIED PRODUCTS LIST FOR CAST-IN-PLACE TACTILE PANELS (ADA DETECTABLE WARNING).



FIRST CHOICE	TYPE 1 CORNER LOCATIONS WITH WALK ADJACENT TO CURB BOTH NEW CONSTRUCTION AND ALTERATIONS
	TYPE 2 CORNER LOCATIONS WITH WALK OFFSET FROM CURB A DISTANCE INSUFFICIENT TO ALLOW REQUIRED RAMP SLOPE (BOTH NEW CONSTRUCTION AND ALTERATIONS)
	TYPE 3 CORNER LOCATIONS WITH WALK OFFSET FROM CURB A DISTANCE SUFFICIENT TO ALLOW REQUIRED RAMP SLOPE (BOTH NEW CONSTRUCTION AND ALTERATIONS)
	TYPE 4 TANGENT LOCATIONS (BOTH NEW CONSTRUCTION AND ALTERATIONS)
SECOND	TYPE 5 TANGENT LOCATIONS (ALTERATIONS ONLY)



TITLE CURB & GUTTER SECTIONS RESIDENTIAL & COLLECTOR STREETS	Issue Date	PW-29 Revision Date
	AUG. 2006	APR 2015

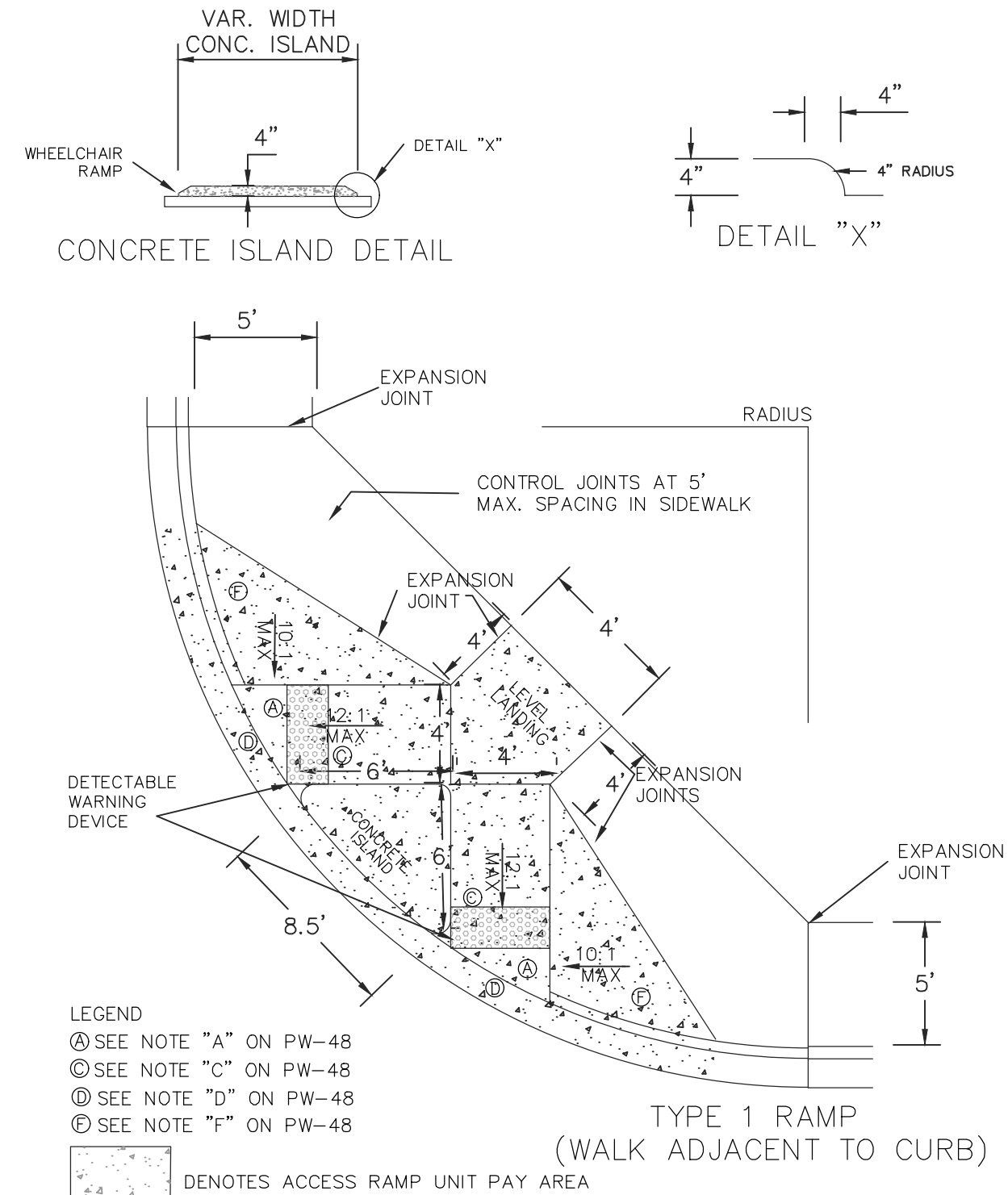


UPRIGHT CLASS 3

Install 1/2" Bituminous Expansion Joint Material At 100' Max. Intervals Or At Tie Ins To Boxes, Radius Returns Or Driveway Aprons. Control Joints 15' Max. O.C.
Joint Sealant Shall be Sonneborn SL2 Self Leveling Urethane as Manufactured by Chemrexx or Equivalent.



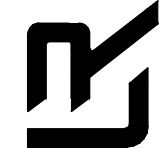
TITLE ACCESS RAMP TYPE 1	Issue Date	PW-49 Revision Date
	AUG. 2006	APR 2015



REVISIONS	DATE

CITY OF LITTLE ROCK, ARKANSAS
JOHN BARROW RD STREETSCAPE
DETAIL SHEET
JOHN BARROW RD & KANIS RD INTERSECTION

DEPARTMENT OF PUBLIC WORKS
CIVIL ENGINEERING
701 W. MARKHAM
LITTLE ROCK, ARKANSAS 72201



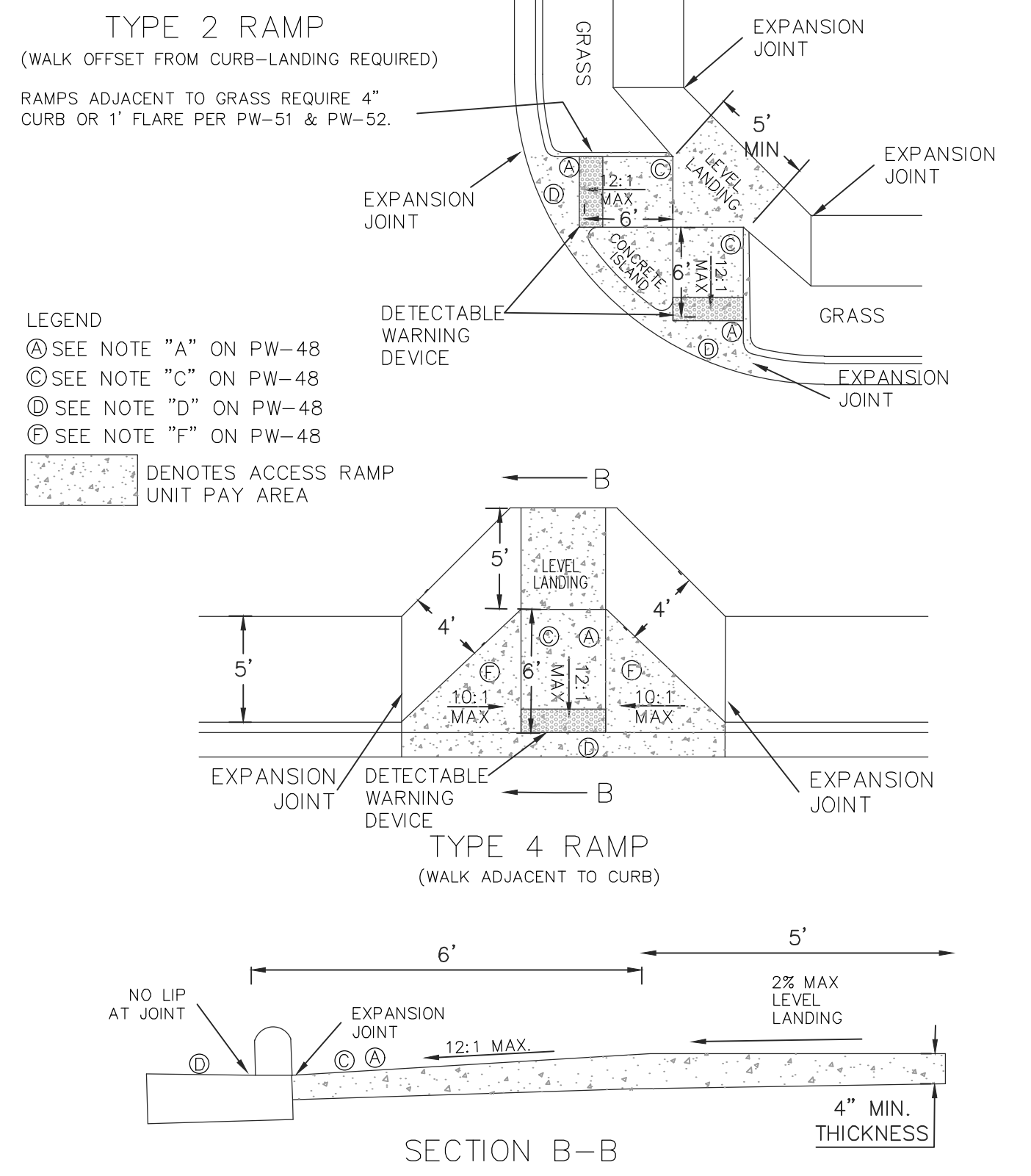
90% SUBMITTAL REVIEW ONLY

DRAWN BY
LCJ
DESIGNED
SBH
CHECKED
SBH
DATE
11-22-24
SCALE

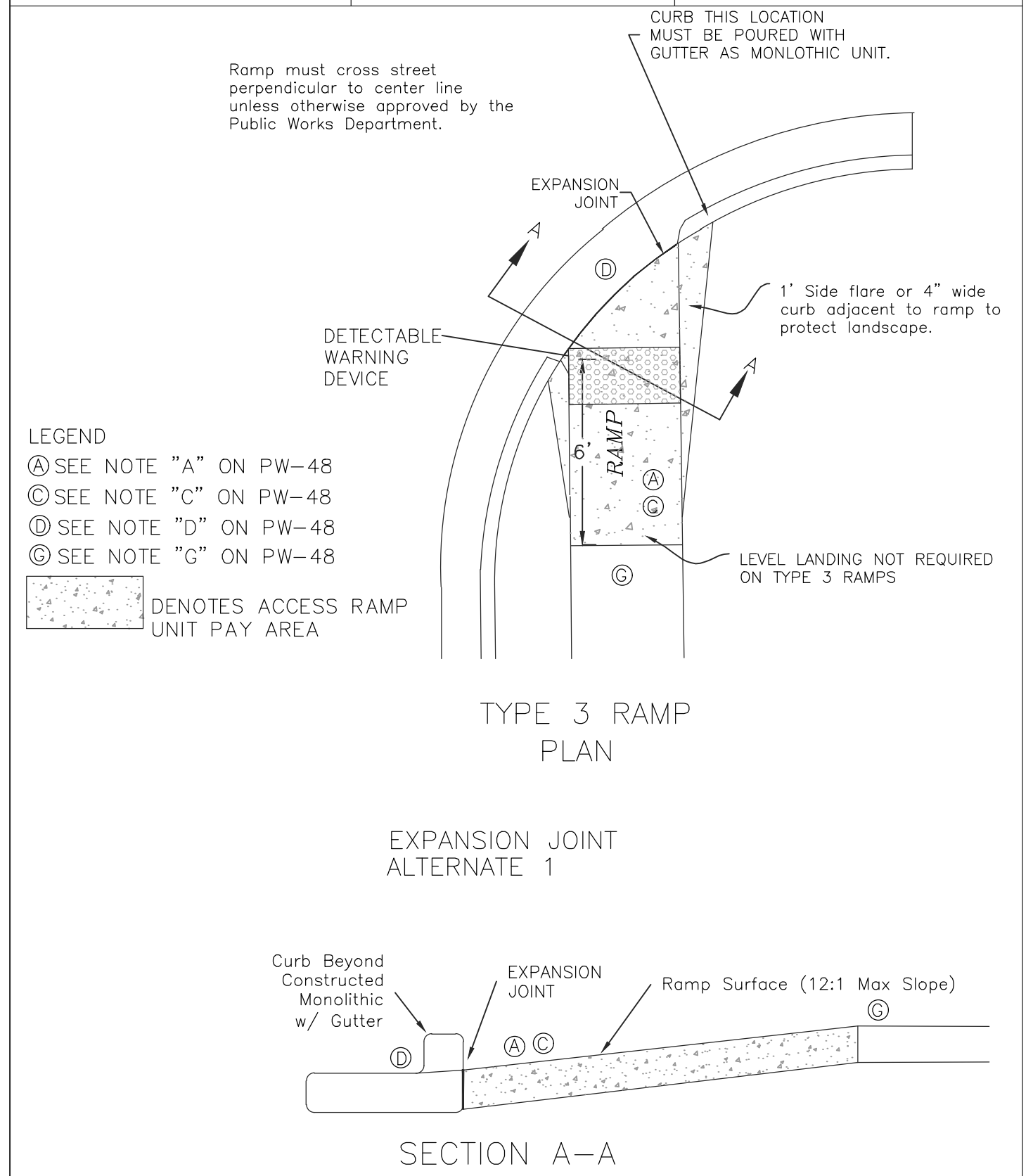
PROJECT NO.
06-17-ST-267
SHEET NO.
C4.2



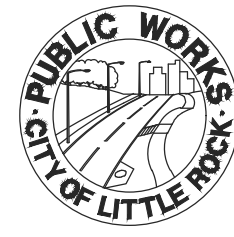
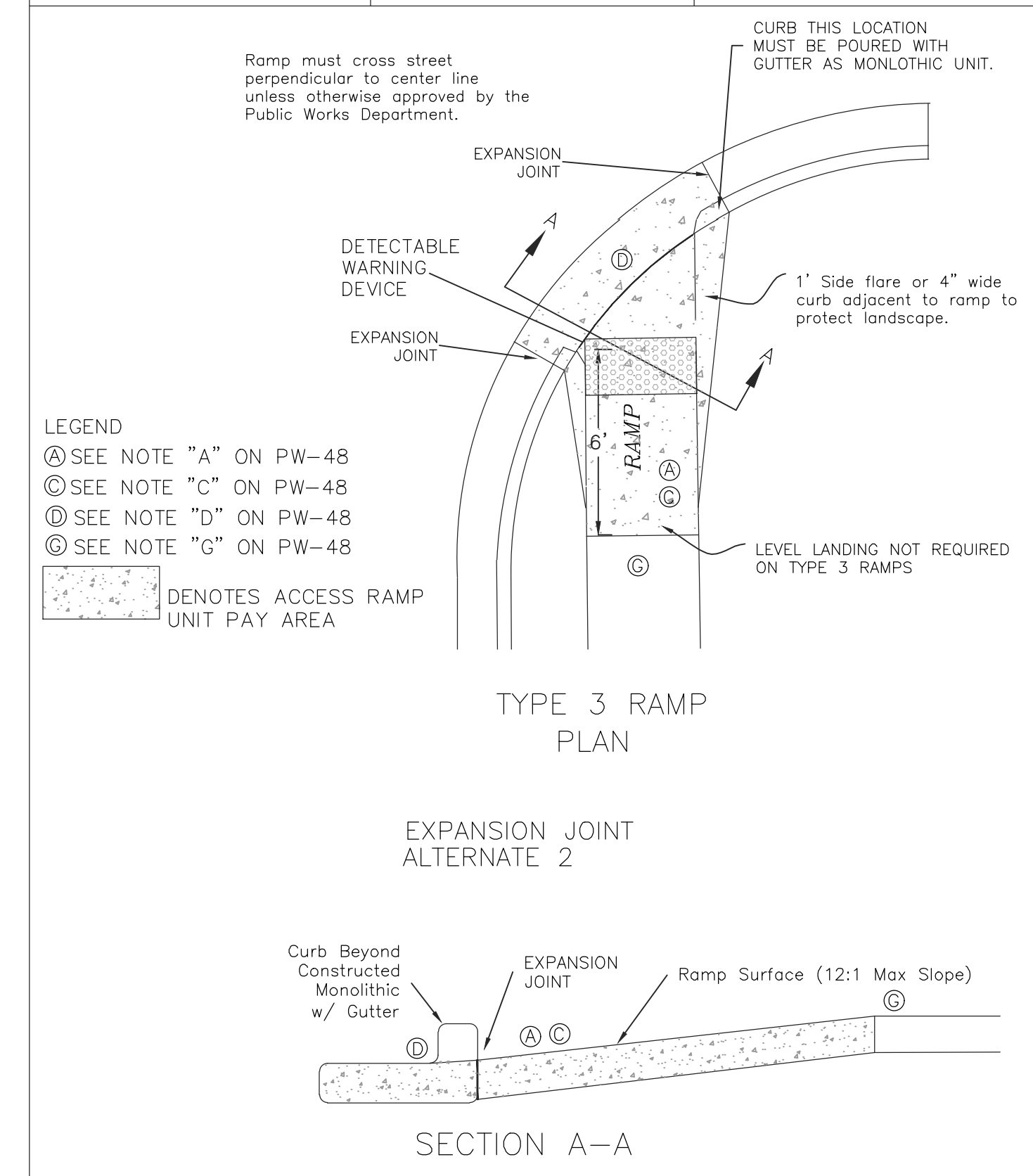
TITLE	PW-50
ACCESS RAMP TYPE 2 & TYPE 3	Revision Date APR 2015
Issue Date AUG, 2006	



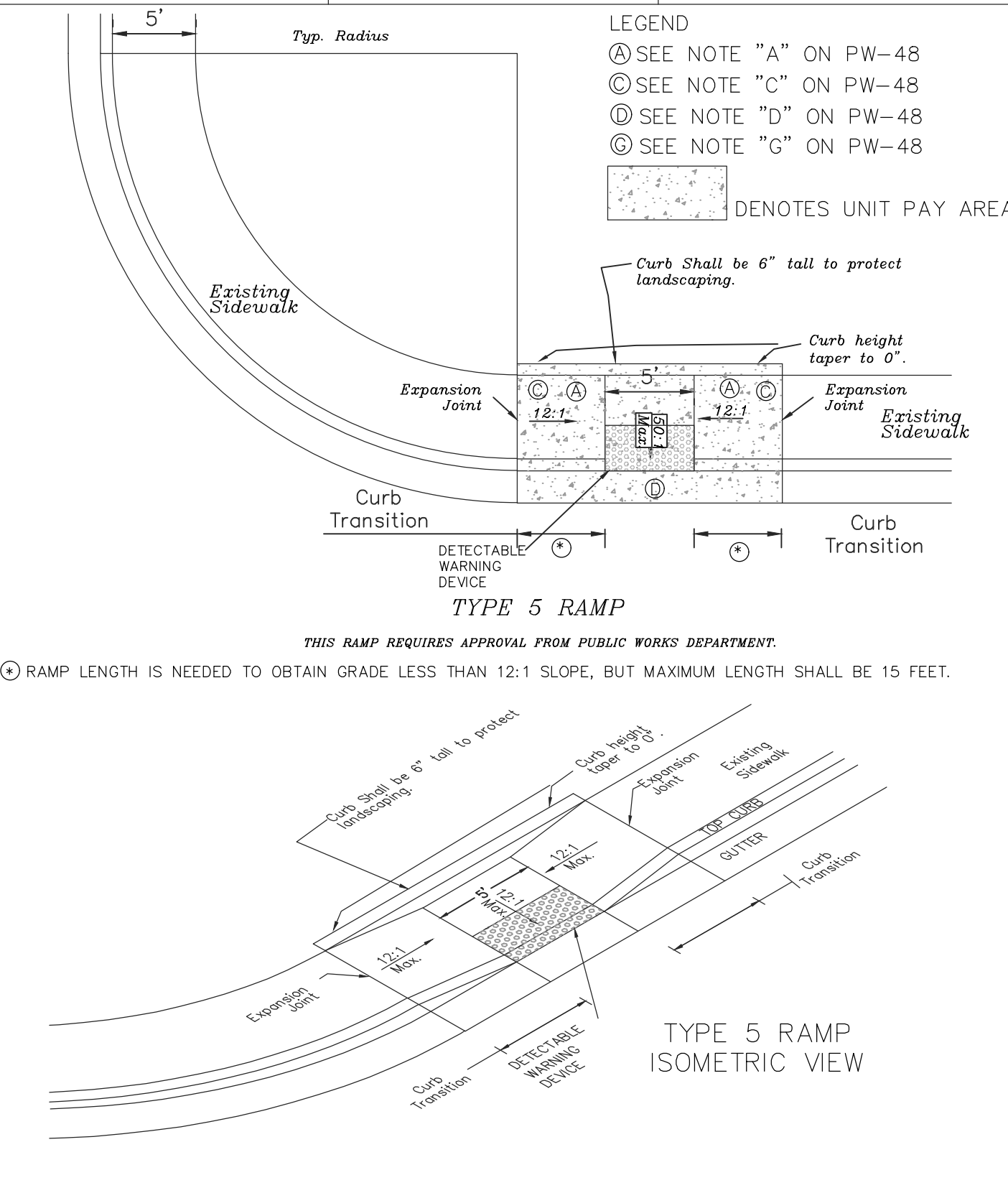
TITLE	PW-51
ACCESS RAMP TYPE 3 EXPANSION JOINT ALTERNATE 1	Revision Date APR 2015
Issue Date AUG, 2006	



TITLE	PW-52
ACCESS RAMP TYPE 3 EXPANSION JOINT ALTERNATE 2	Revision Date APR 2015
Issue Date AUG, 2006	



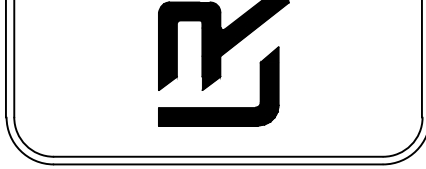
TITLE	PW-53
ACCESS RAMP TYPE 5	Revision Date APR 2015
Issue Date AUG, 2006	



REVISIONS	DATE

CITY OF LITTLE ROCK, ARKANSAS
 JOHN BARROW RD STREETSCAPE
 DETAIL SHEET
 JOHN BARROW RD & KANIS RD INTERSECTION

DEPARTMENT OF PUBLIC WORKS
 CIVIL ENGINEERING
 701 W. MARKHAM
 LITTLE ROCK, ARKANSAS 72201



90% SUBMITTAL
 REVIEW ONLY

DRAWN BY
 LCJ
 DESIGNED
 SBH
 CHECKED
 SBH
 DATE
 11-22-24
 SCALE

PROJECT NO.
 06-17-ST-267
 SHEET NO.
 C4.3