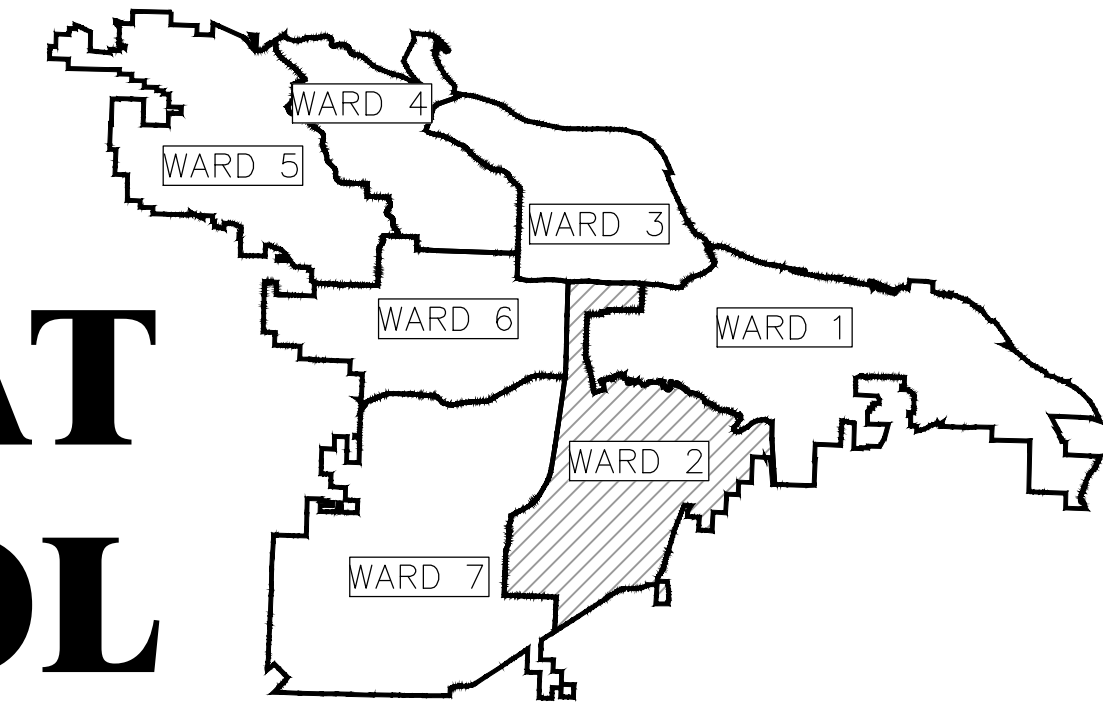
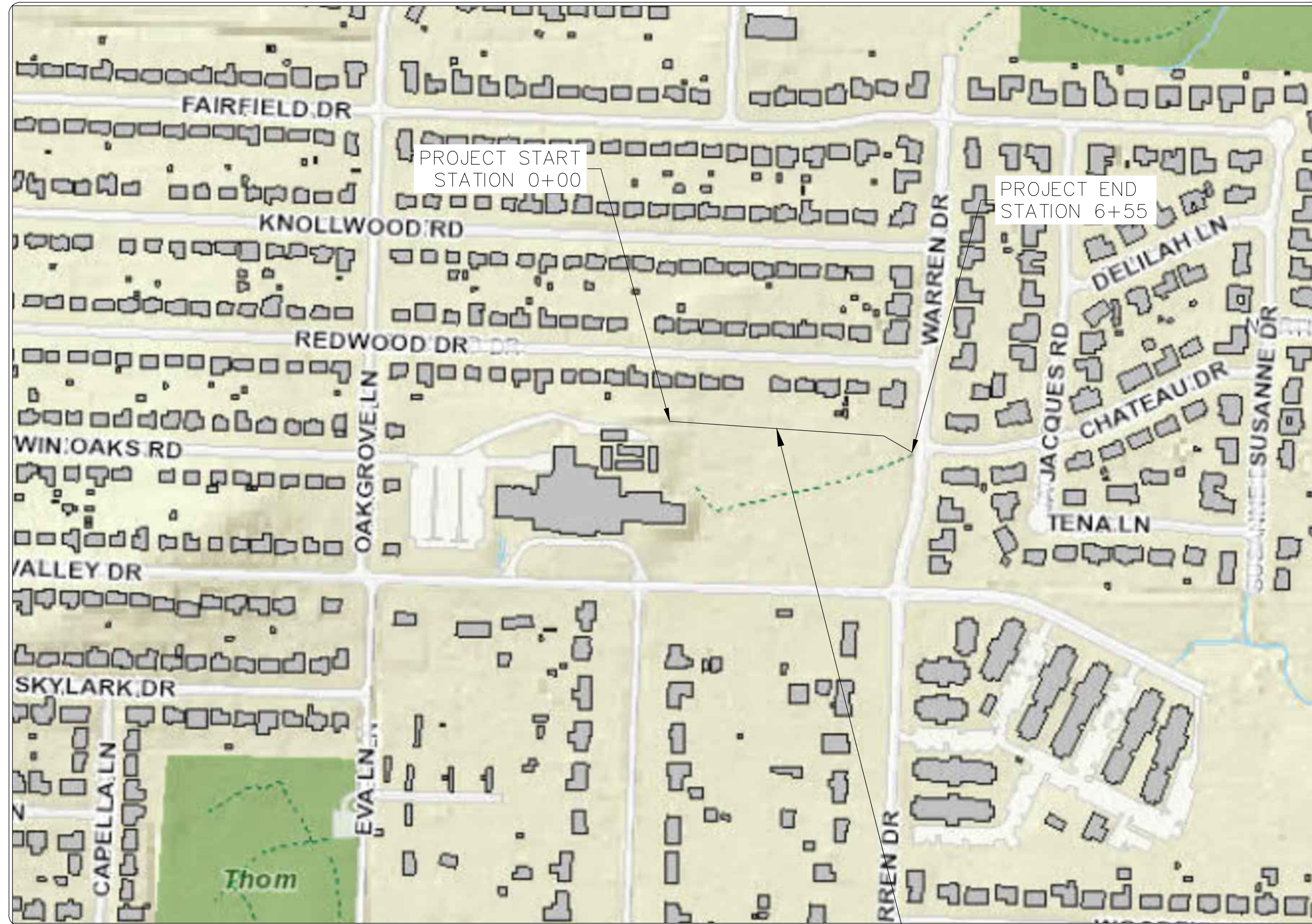


# CLR PROJECT # 02-22-DR-09 REDWOOD DRIVE DRAINAGE AT WATSON ELEMENTARY SCHOOL



PROJECT LOCATION - WARD 2



PROJECT LOCATION

SHEET #	INDEX OF DRAWINGS
C1	COVER SHEET
C2	GENERAL NOTES AND QUANTITIES
C3	PROJECT SITE OVERVIEW
C4	PLAN AND PROFILE SHEET I
C5	PLAN AND PROFILE SHEET II
C6	PLAN AND PROFILE SHEET III
C7	EROSION CONTROL PLAN
C8	DETAILS

## ISSUED FOR CONSTRUCTION

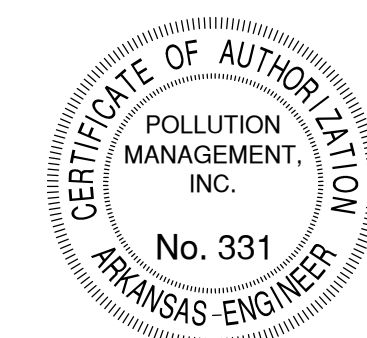


### BOND PROGRAM

DEPARTMENT OF PUBLIC WORKS  
CIVIL ENGINEERING  
701 WEST MARKHAM STREET  
LITTLE ROCK, ARKANSAS 72201



3512 S. SHACKLEFORD RD.  
LITTLE ROCK, AR 72205



REVISIONS    DATE


CITY OF LITTLE ROCK, ARKANSAS  
REDWOOD DRIVE DRAINAGE AT WATSON ELEMENTARY SCHOOL

COVER SHEET

DEPARTMENT OF PUBLIC WORKS  
CIVIL ENGINEERING  
701 W. MARKHAM  
LITTLE ROCK, ARKANSAS 72201



DRAWN BY  
CTG  
DESIGNED  
CTG  
CHECKED  
BJW  
DATE  
6-5-2024  
SCALE  
N.T.S.

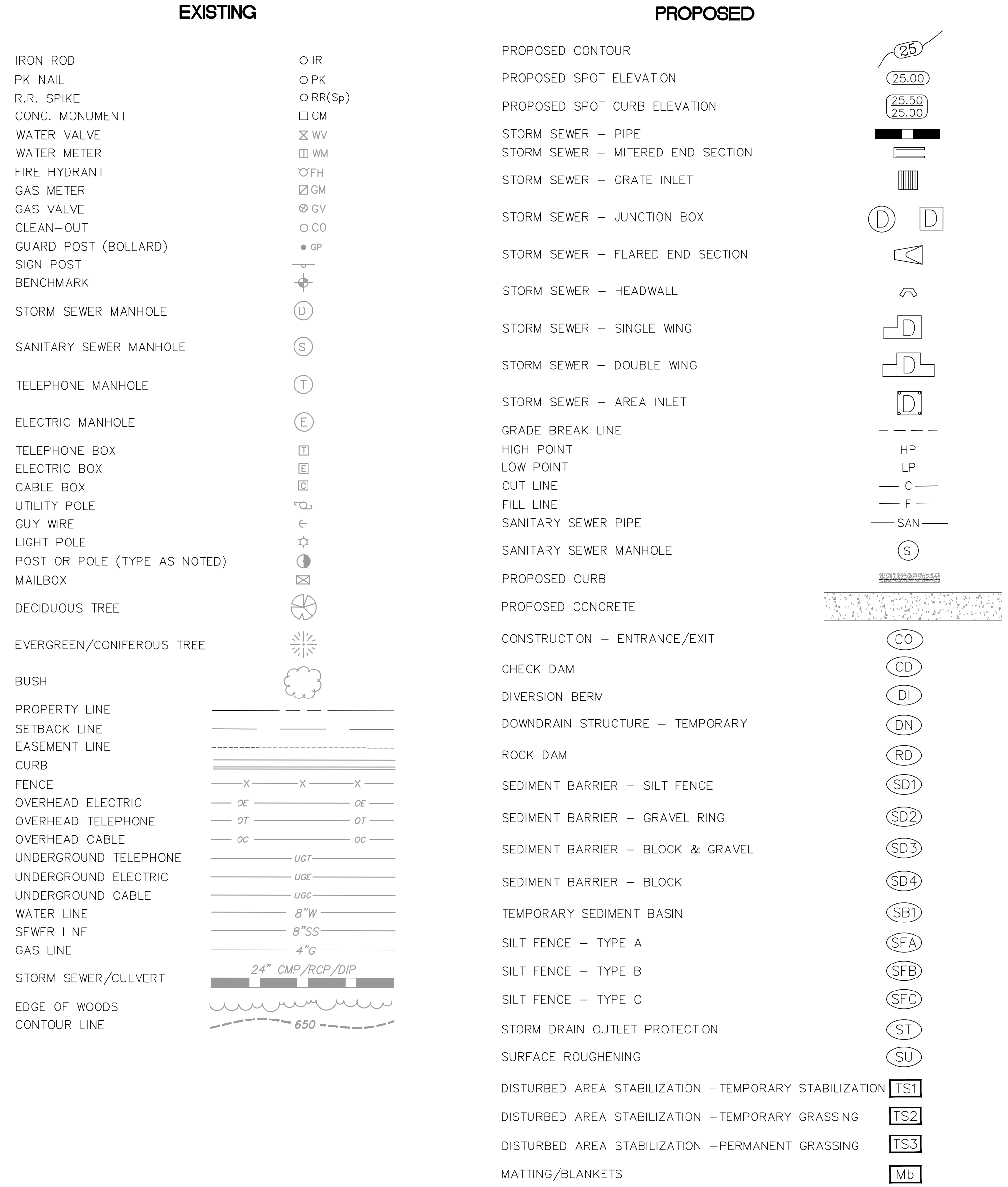
PROJECT NO.  
CLR 02-22-DR-09  
SHEET NO.

C1

Redwood Drive Drainage at Watson Elementary School			
List of Quantities			
Item No.	Item Description	Units	Estimated Quantity
2.01	Site Preparation	LS	1
3.01	Unclassified Excavation	CY	610
9.04	Concrete Sidewalk (4" Thick)	SF	37
11.06	Reinforced Concrete Headwall	EA	1
13.24S	24" Storm Side Drain	LF	53
13.61	Tie Into Existing Junction Box	EA	1
19.01	Final Cleanup	LS	1
<del>24.15</del>	<del>Matting Blankets (MB)</del>	<del>BT</del>	<del>11500</del>
SP	As-Built (Record) Drawings	LS	1
24.02	Rock Check Dam	CY	10
24.16	Disturbed Area Stabilization - Temporary Stabilization (TS1)	AC	0.25
24.17	Disturbed Area Stabilization - Temporary Grassing (TS2)	AC	0.25
24.18	Disturbed Area Stabilization - Permanent Grassing (TS3)	AC	0.25

Tree Removal	
Description	Quantity
24" Oak	3
24" Pine	2
36" Pine	1
6" Pine	1
18" Gum	2
<b>TOTAL</b>	<b>9</b>

NOTE:  
TREE REMOVAL SHALL BE INCLUDED AS PART OF THE SITE PREPARATION.



REVISIONS	DATE

CITY OF LITTLE ROCK, ARKANSAS  
 REDWOOD DRIVE DRAINAGE AT WATSON ELEMENTARY SCHOOL  
 GENERAL NOTES AND QUANTITIES

DEPARTMENT OF PUBLIC WORKS  
 CIVIL ENGINEERING  
 701 W. MARKHAM  
 LITTLE ROCK, ARKANSAS 72201



DRAWN BY  
**CTG**  
 DESIGNED  
**CTG**  
 CHECKED  
**BJW**  
 DATE  
**6-5-2024**  
 SCALE  
**N.T.S.**  
 PROJECT NO.  
**CLR 02-22-DR-09**  
 SHEET NO.  
**C2**

**ISSUED FOR CONSTRUCTION**

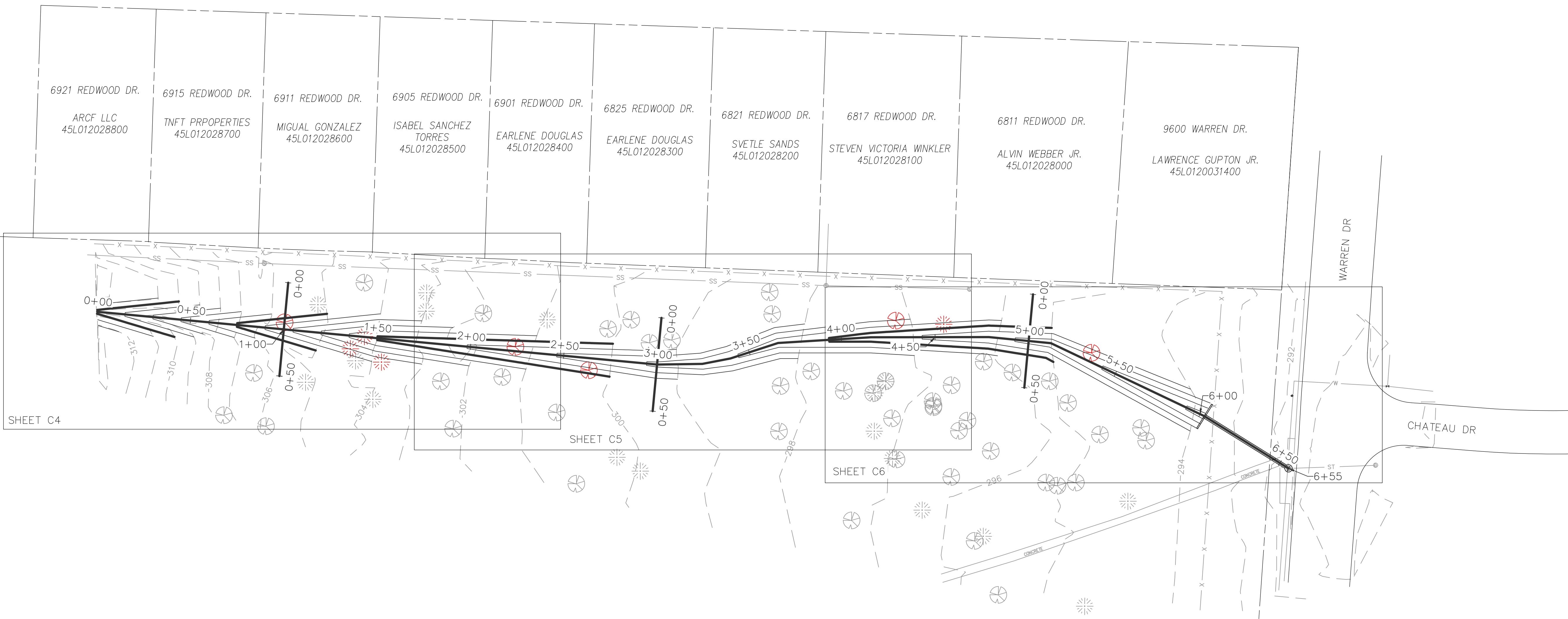
REVISIONS	DATE

**CITY OF LITTLE ROCK, ARKANSAS**  
**REDWOOD DRIVE DRAINAGE AT WATSON ELEMENTARY SCHOOL**  
**PROJECT SITE OVERVIEW**

**DEPARTMENT OF PUBLIC WORKS**  
**CIVIL ENGINEERING**  
**701 W. MARKHAM**  
**LITTLE ROCK, ARKANSAS 72201**



**DRAWN BY**  
**CTG**  
**DESIGNED**  
**CTG**  
**CHECKED**  
**BJW**  
**DATE**  
**6-5-2024**  
**SCALE**  
**1" = 30'**  
**PROJECT NO.**  
**CLR 02-22-DR-09**  
**SHEET NO.**  
**C3**

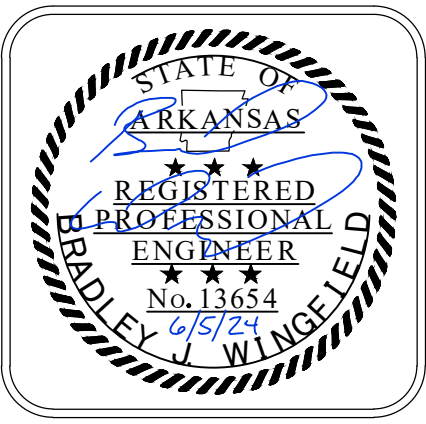


**GRAPHIC SCALE**  
  
**ISSUED FOR CONSTRUCTION**

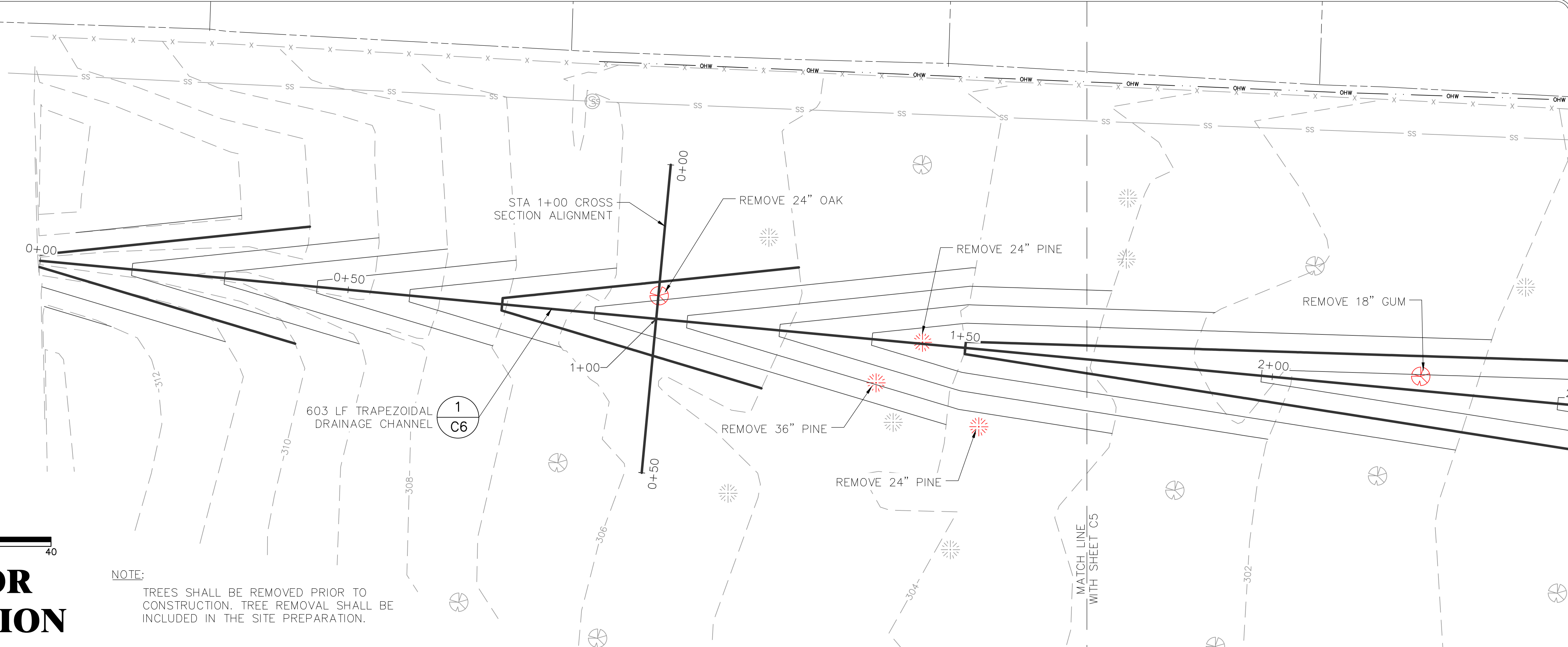
REVISIONS	DATE

CITY OF LITTLE ROCK, ARKANSAS  
 REDWOOD DRIVE DRAINAGE AT WATSON ELEMENTARY SCHOOL  
 PLAN AND PROFILE SHEET I

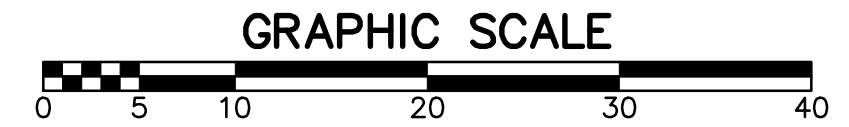
DEPARTMENT OF PUBLIC WORKS  
 CIVIL ENGINEERING  
 701 W. MARKHAM  
 LITTLE ROCK, ARKANSAS 72201



**DRAWN BY**  
CTG  
**DESIGNED**  
CTG  
**CHECKED**  
BJW  
**DATE**  
6-5-2024  
**SCALE**  
1" = 10'  
**PROJECT NO.**  
CLR 02-22-DR-09  
**SHEET NO.**  
C4

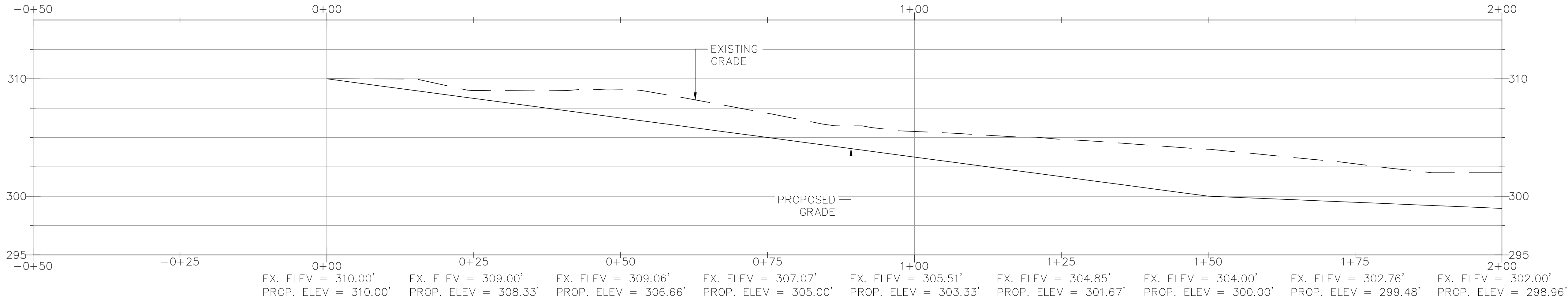


**ISSUED FOR CONSTRUCTION**

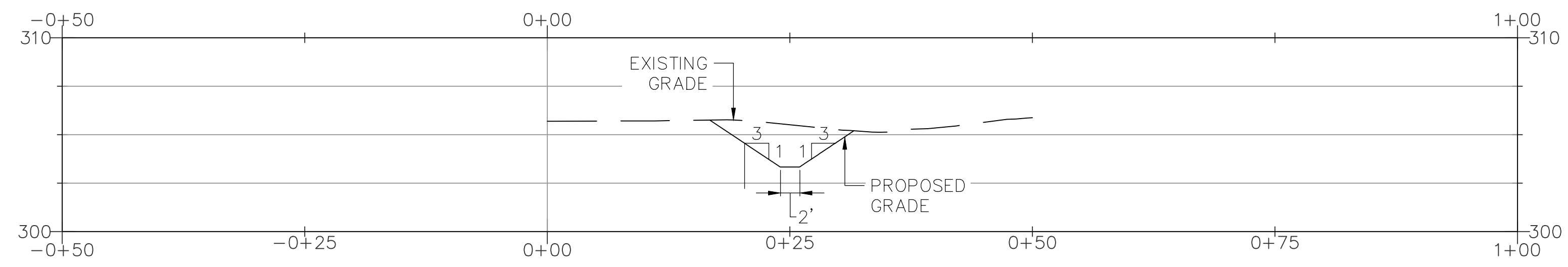


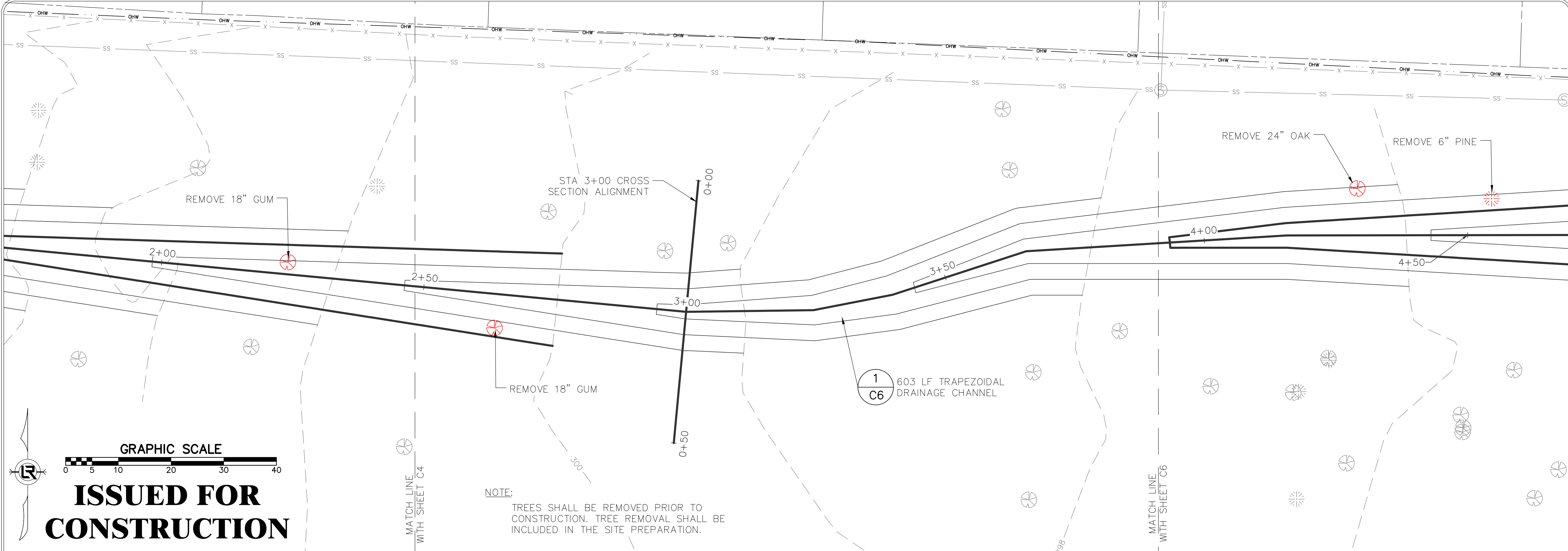
**NOTE:**  
 TREES SHALL BE REMOVED PRIOR TO CONSTRUCTION. TREE REMOVAL SHALL BE INCLUDED IN THE SITE PREPARATION.

STORWATER DRAINAGE SYSTEM PROFILE



STA 1+00 CROSS SECTION PROFILE



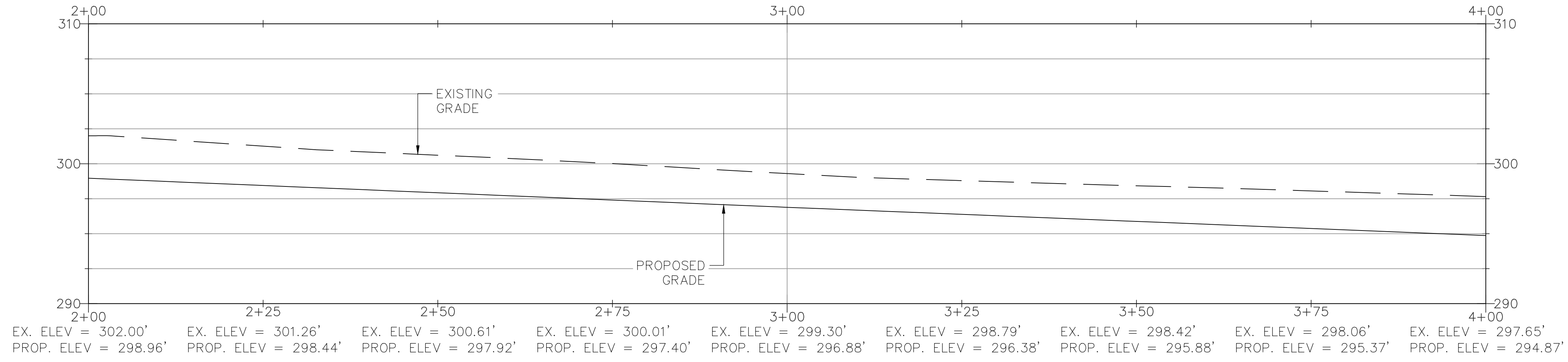


GRAPHIC SCALE  
 0 5 10 20 30 40

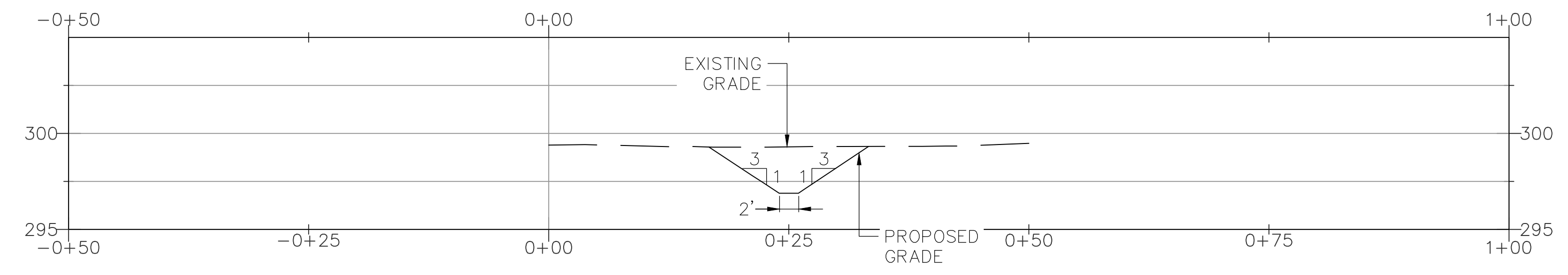
**ISSUED FOR CONSTRUCTION**

NOTE:  
 TREES SHALL BE REMOVED PRIOR TO CONSTRUCTION. TREE REMOVAL SHALL BE INCLUDED IN THE SITE PREPARATION.

STORWATER DRAINAGE SYSTEM PROFILE



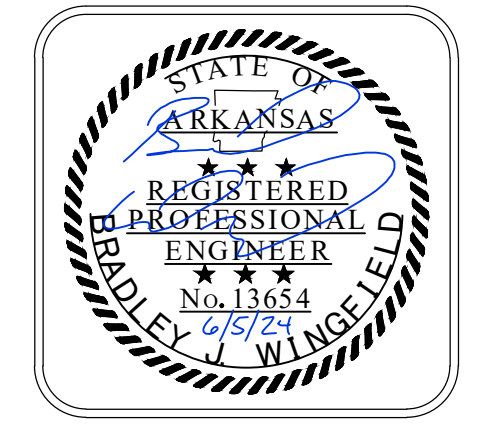
STA 3+00 CROSS SECTION PROFILE



REVISIONS	DATE

CITY OF LITTLE ROCK, ARKANSAS  
 REDWOOD DRIVE DRAINAGE AT WATSON ELEMENTARY SCHOOL  
 PLAN AND PROFILE SHEET II

DEPARTMENT OF PUBLIC WORKS  
 CIVIL ENGINEERING  
 701 W. MARKHAM  
 LITTLE ROCK, ARKANSAS 72201

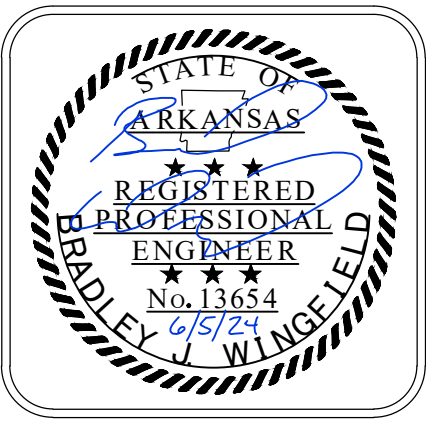


DRAWN BY  
 CTG  
 DESIGNED  
 CTG  
 CHECKED  
 BJW  
 DATE  
 6-5-2024  
 SCALE  
 1" = 10'  
 PROJECT NO.  
 CLR 02-22-DR-09  
 SHEET NO.  
 C5

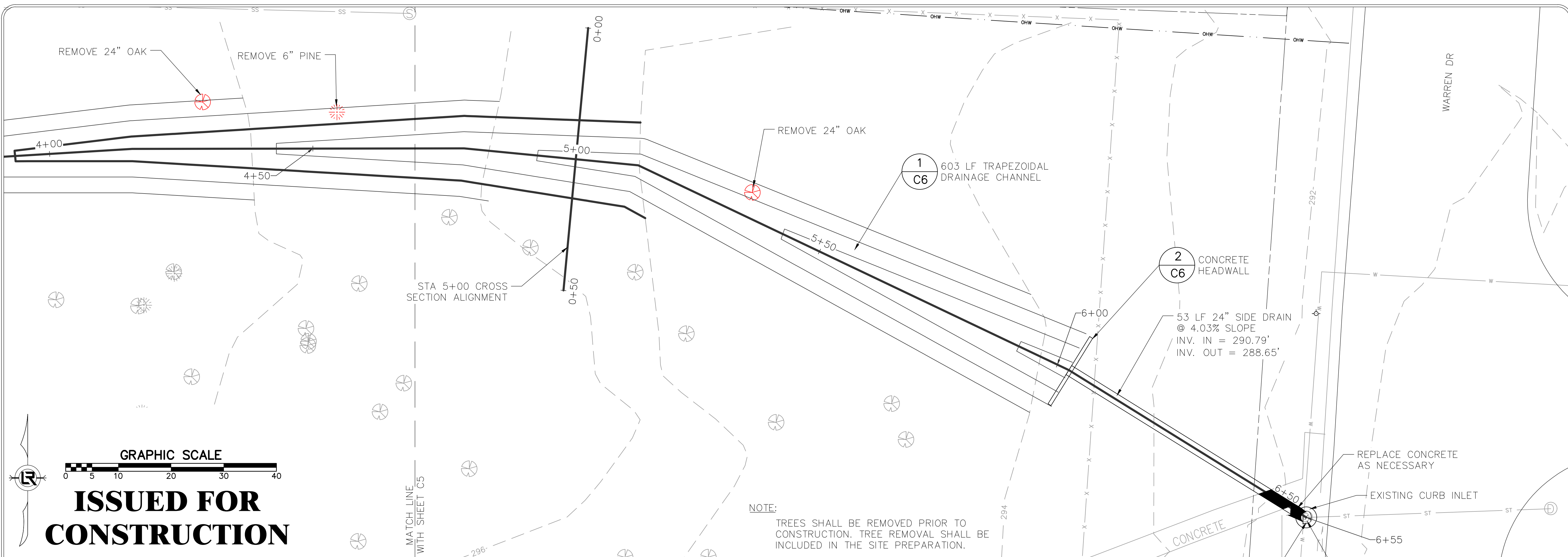
REVISIONS	DATE

CITY OF LITTLE ROCK, ARKANSAS  
 REDWOOD DRIVE DRAINAGE AT WATSON ELEMENTARY SCHOOL  
 PLAN AND PROFILE SHEET III

DEPARTMENT OF PUBLIC WORKS  
 CIVIL ENGINEERING  
 701 W. MARKHAM  
 LITTLE ROCK, ARKANSAS 72201



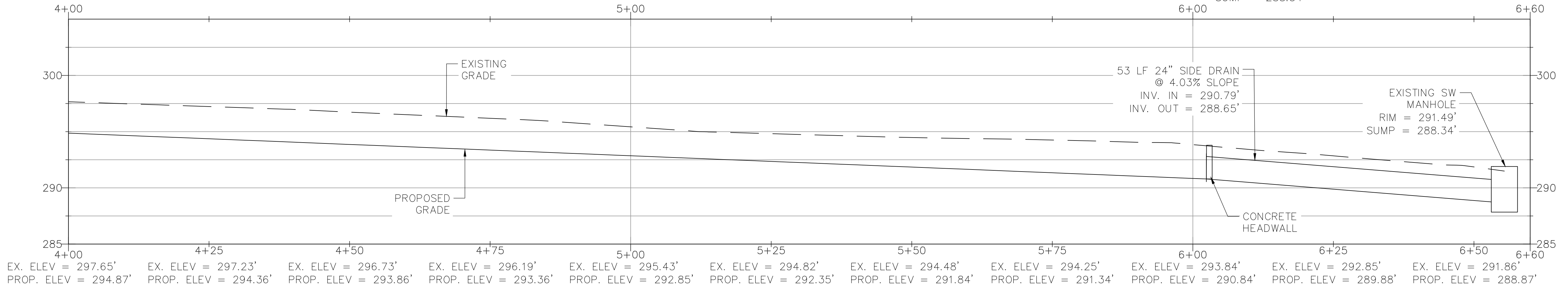
DRAWN BY  
 CTG  
 DESIGNED  
 CTG  
 CHECKED  
 BJW  
 DATE  
 6-5-2024  
 SCALE  
 1" = 10'  
 PROJECT NO.  
 CLR 02-22-DR-09  
 SHEET NO.  
 C6



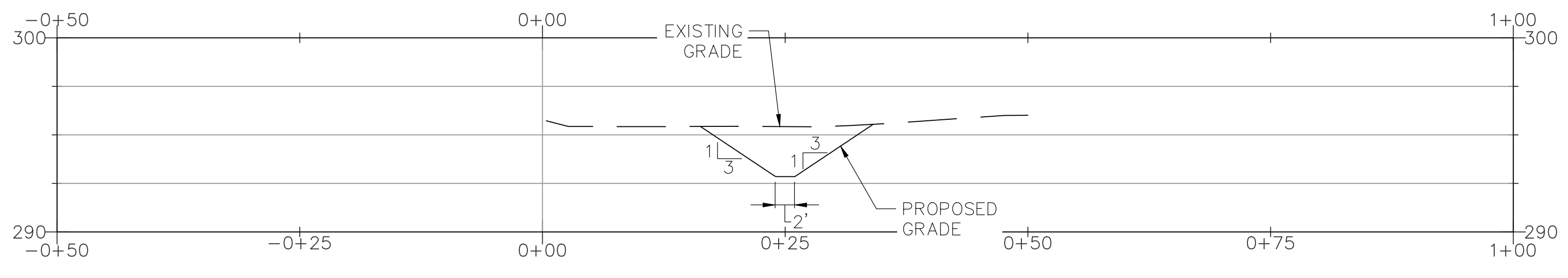
GRAPHIC SCALE  
 0 5 10 20 30 40

**ISSUED FOR CONSTRUCTION**

STORWATER DRAINAGE SYSTEM PROFILE



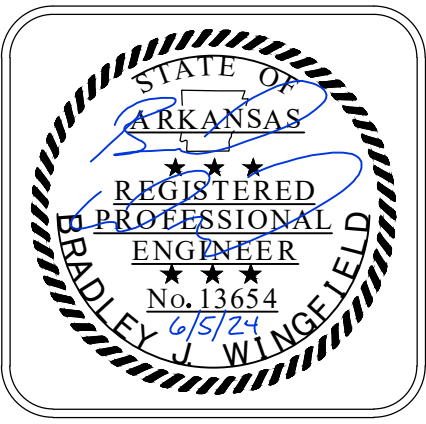
STA 5+00 CROSS SECTION PROFILE



REVISIONS	DATE

CITY OF LITTLE ROCK, ARKANSAS  
 REDWOOD DRIVE DRAINAGE AT WATSON ELEMENTARY SCHOOL  
 EROSION CONTROL PLAN

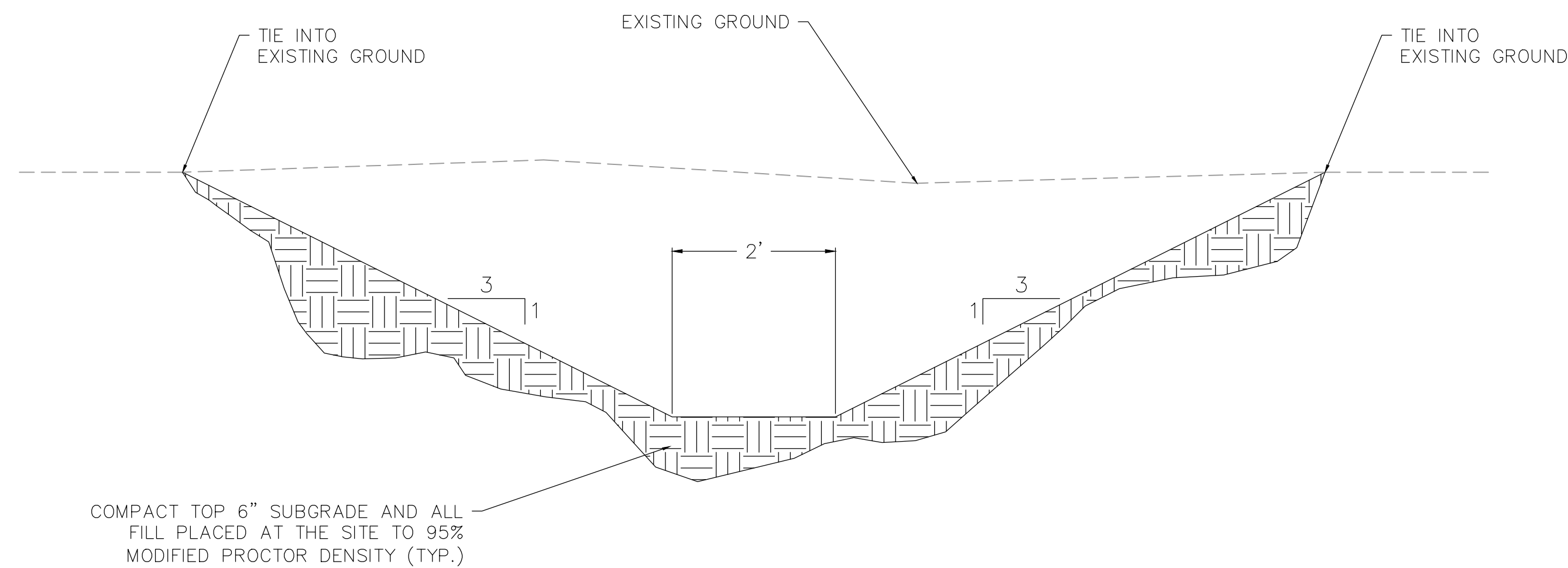
DEPARTMENT OF PUBLIC WORKS  
 CIVIL ENGINEERING  
 701 W. MARKHAM  
 LITTLE ROCK, ARKANSAS 72201



DRAWN BY  
 CTG  
 DESIGNED  
 CTG  
 CHECKED  
 BJW  
 DATE  
 6-5-2024  
 SCALE  
 1" = 30'  
 PROJECT NO.  
 CLR 02-22-DR-09  
 SHEET NO.  
 C7



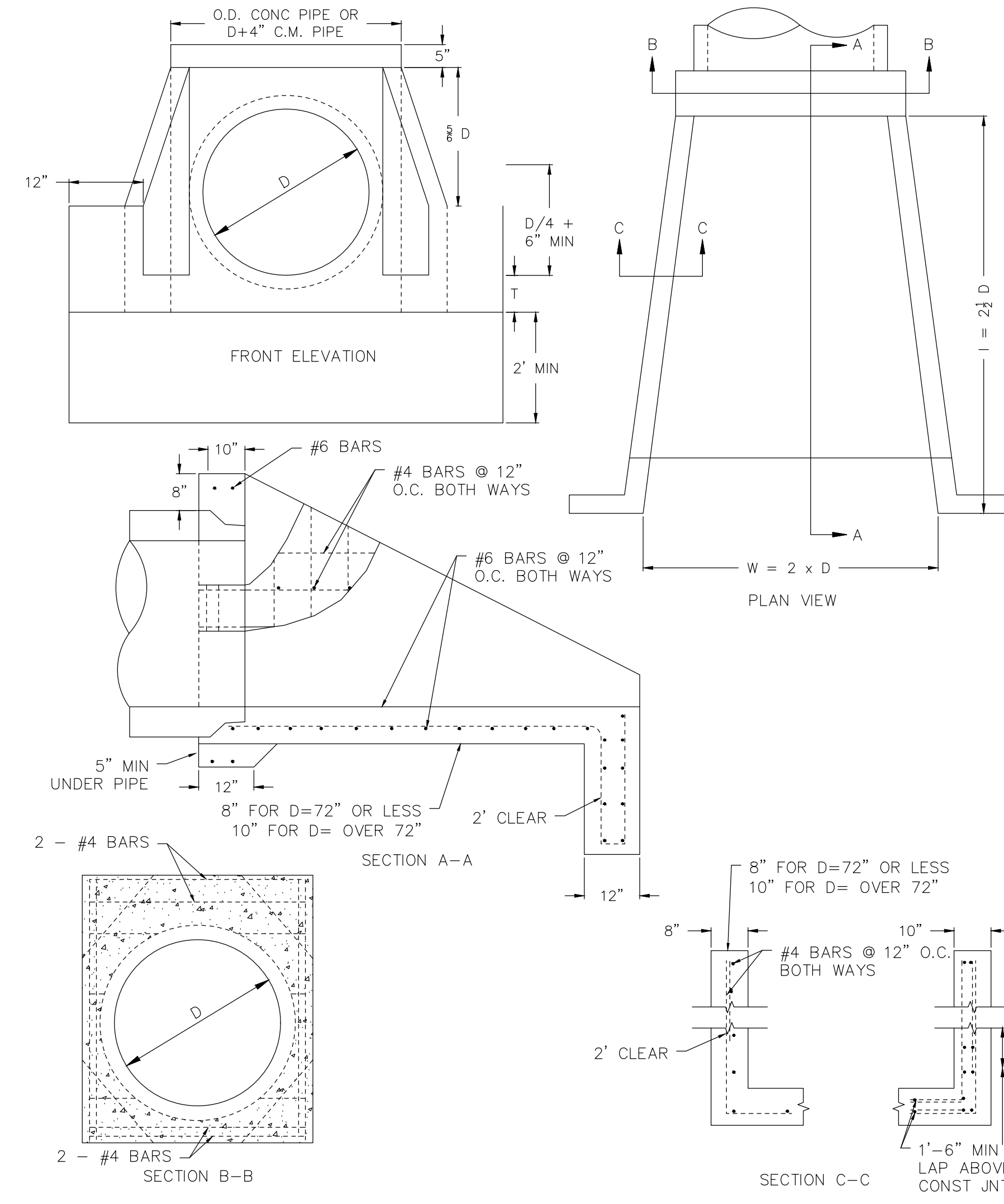
GRAPHIC SCALE  
 0 15 30 60 90 120  
**ISSUED FOR CONSTRUCTION**



**DRAINAGE CHANNEL DETAIL**

SCALE: NTS

1  
C6



**HEADWALL DETAIL**

SCALE: NTS

2  
C6

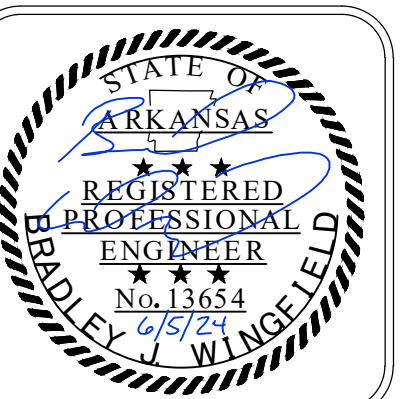
**ISSUED FOR  
CONSTRUCTION**

REVISIONS    DATE

CITY OF LITTLE ROCK, ARKANSAS  
REDWOOD DRIVE DRAINAGE AT WATSON ELEMENTARY SCHOOL

DETAILS

DEPARTMENT OF PUBLIC WORKS  
CIVIL ENGINEERING  
701 W. MARKHAM  
LITTLE ROCK, ARKANSAS 72201



DRAWN BY  
CTG  
DESIGNED  
CTG  
CHECKED  
BJW  
DATE  
6-5-2024  
SCALE  
1" = 10'  
PROJECT NO.  
CLR 02-22-DR-09  
SHEET NO.

C7