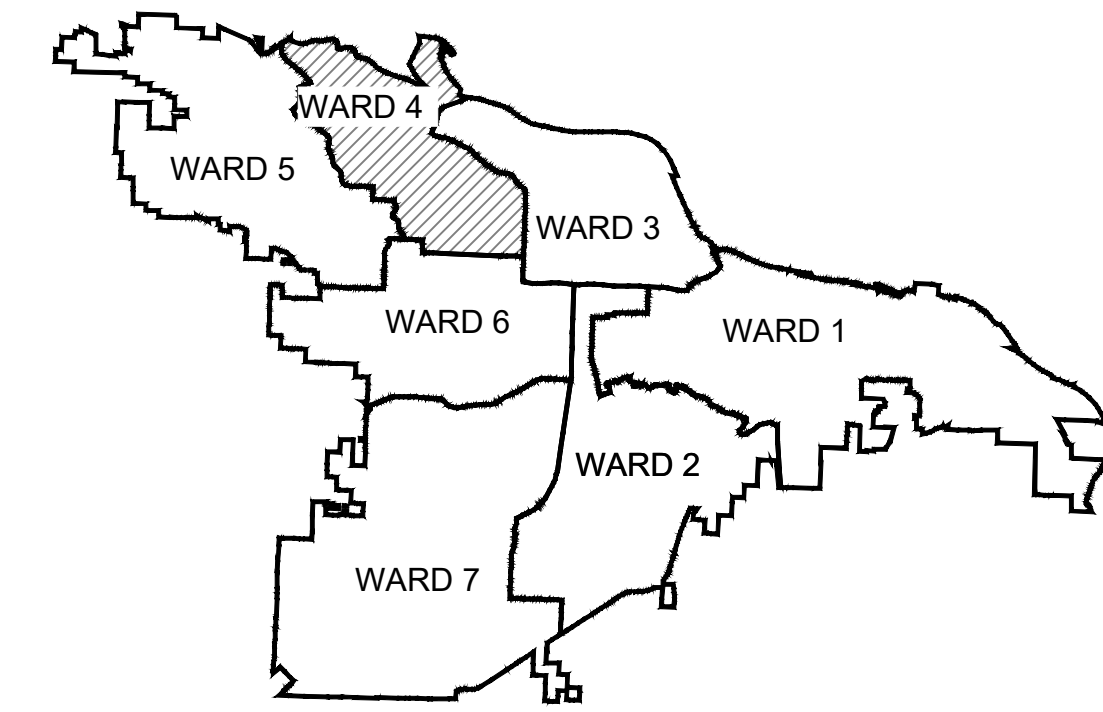




04-22-DR-004

BUTTERMILK ROAD DRAINAGE IMPROVEMENTS

60% SUBMITTAL

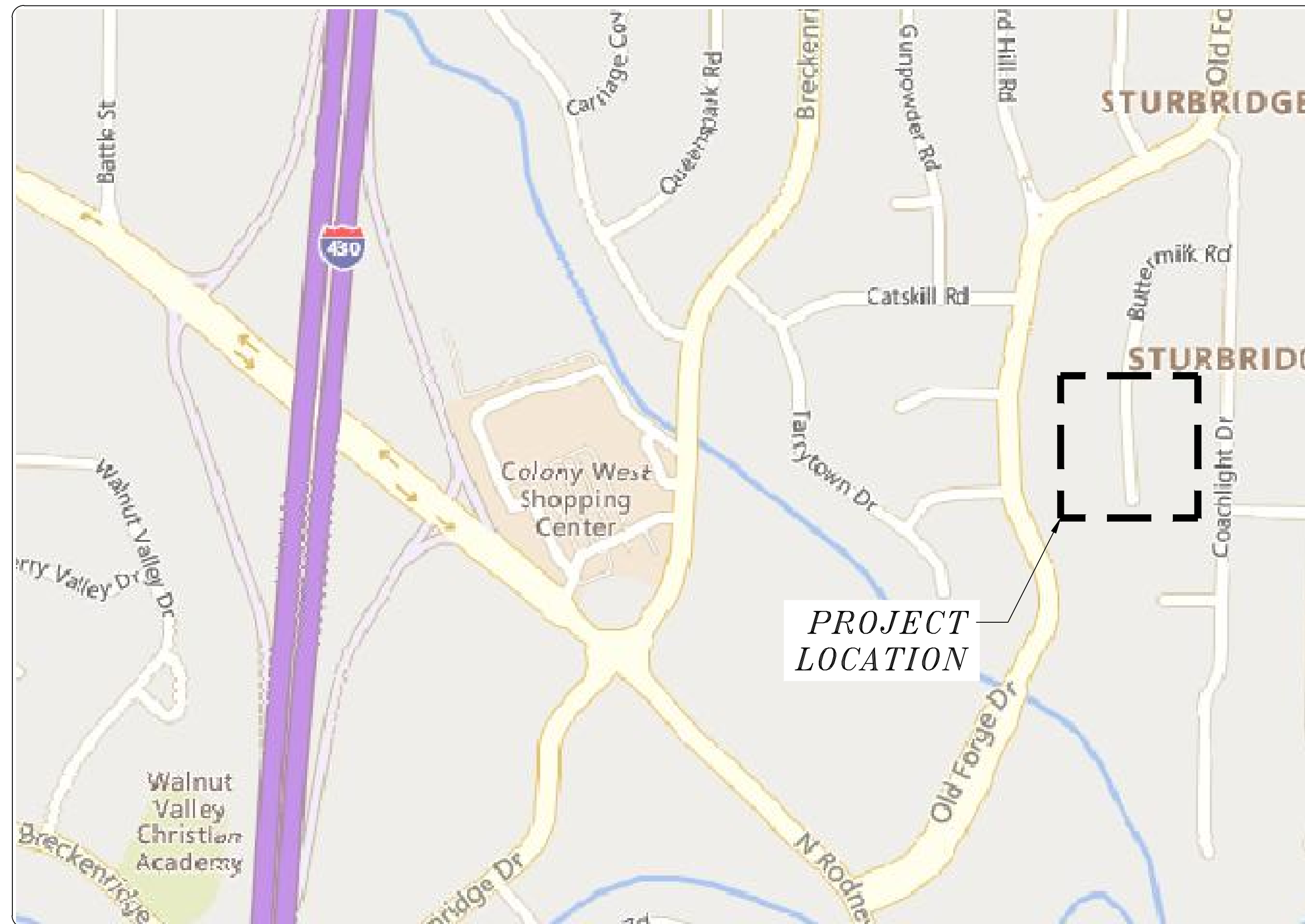
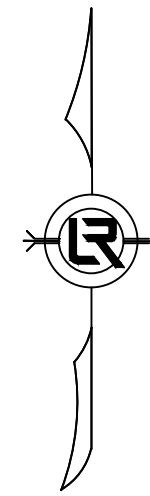


PROJECT LOCATION - WARD 4

REVISIONS	DATE

CITY OF LITTLE ROCK, ARKANSAS
BUTTERMILK ROAD DRAINAGE IMPROVEMENTS

COVER SHEET



N.T.S

INDEX OF SHEETS	
SHEET NUMBER	SHEET TITLE
C1	COVER SHEET
C2	LEGEND, NOTES, & QUANTITIES
C3	TOPOGRAPHIC SURVEY
C4	PLAN AND PROFILE

DRAINAGE DESIGN BASED ON 25 YR STORM EVENT

DEPARTMENT OF PUBLIC WORKS
CIVIL ENGINEERING
701 WEST MARKHAM STREET
LITTLE ROCK, ARKANSAS 72201



10800 Financial Centre Pkwy, Suite 500
Little Rock, Arkansas 72211
Main (501) 801-2679

PRELIMINARY

FOR INTERIM REVIEW ONLY

THESE DOCUMENTS ARE FOR INTERIM REVIEW AND NOT INTENDED FOR REGULATORY APPROVAL, PERMIT BIDDING OR CONSTRUCTION PURPOSES. THEY WERE PREPARED BY OR UNDER THE SUPERVISION OF:

NAME: _____ # LICENSE NO. _____
DATE: 11/16/2024
FIRM: BUSINESS NO. _____ STATE: _____

DRAWN BY

KT

DESIGNED

KT

CHECKED

BV

DATE

NOVEMBER 2024

SCALE

AS SHOWN

PROJECT NO.

054616.004

SHEET NO.

C1



Know what's below.
Call before you dig.

REVISIONS	DATE

CITY OF LITTLE ROCK, ARKANSAS
BUTTERMILK ROAD DRAINAGE IMPROVEMENTS

LEGEND, NOTES, & QUANTITIES

DEPARTMENT OF PUBLIC WORKS
CIVIL ENGINEERING
701 W. MARKHAM
LITTLE ROCK, ARKANSAS 72201



PRELIMINARY

FOR INTERIM REVIEW ONLY
THESE DOCUMENTS ARE FOR INTERIM REVIEW AND NOT INTENDED FOR REGULATORY APPROVAL, PERMIT, BIDDING OR CONSTRUCTION PURPOSES. THEY WERE PREPARED BY OR UNDER THE SUPERVISION OF:
#1 NAME: #2 #1 LICENSE NO.:
13:162024 #2 LICENSE NO.:
DATE: #2
#1 FIRM/ BUSINESS NO.: #2 STATE:

DRAWN BY
KT
DESIGNED
KT
CHECKED
BV
DATE
NOVEMBER 2024
SCALE
AS SHOWN
PROJECT NO.
054616.004
SHEET NO.
C2

EXISTING LEGEND PROPOSED

- | | | |
|--|----------------------------------|---|
| IRON ROD
PK NAIL
R.R. SPIKE
CONC. MONUMENT
WATER VALVE
WATER METER
FIRE HYDRANT
GAS METER
GAS VALVE
CLEAN-OUT
GUARD POST (BOLLARD)
SIGN POST
BENCHMARK

STORM SEWER MANHOLE

SANITARY SEWER MANHOLE

TELEPHONE MANHOLE

ELECTRIC MANHOLE
TELEPHONE BOX
ELECTRIC BOX
CABLE BOX
UTILITY POLE
GUY WIRE
LIGHT POLE
POST OR POLE (TYPE AS NOTED)
MAILBOX

DECIDUOUS TREE

EVERGREEN/CONIFEROUS TREE

BUSH
PROPERTY LINE
SETBACK LINE
EASEMENT LINE
CURB
FENCE
OVERHEAD ELECTRIC
OVERHEAD TELEPHONE
OVERHEAD CABLE
UNDERGROUND TELEPHONE
UNDERGROUND ELECTRIC
UNDERGROUND CABLE
WATER LINE
SEWER LINE
GAS LINE

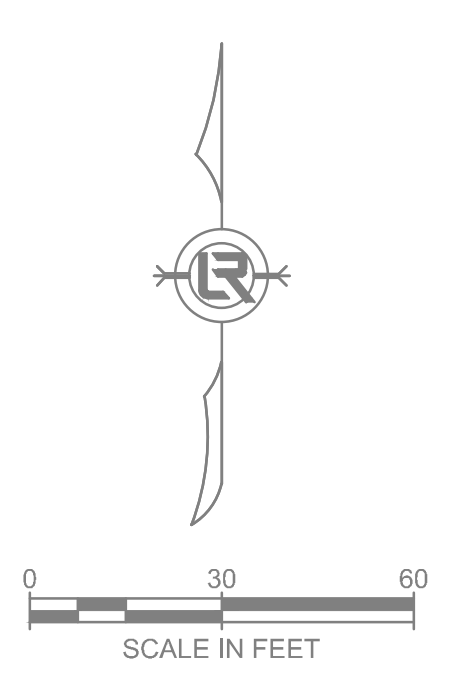
STORM SEWER/CULVERT

EDGE OF WOODS
CONTOUR LINE |

 | PROPOSED CONTOUR
PROPOSED SPOT ELEVATION
PROPOSED SPOT CURB ELEVATION
STORM SEWER – PIPE
STORM SEWER – MITERED END SECTION
STORM SEWER – GRATE INLET
STORM SEWER – JUNCTION BOX
STORM SEWER – FLARED END SECTION
STORM SEWER – HEADWALL
STORM SEWER – SINGLE WING
STORM SEWER – DOUBLE WING
STORM SEWER – AREA INLET
GRADE BREAK LINE
HIGH POINT
LOW POINT
CUT LINE
FILL LINE
SANITARY SEWER PIPE
SANITARY SEWER MANHOLE
PROPOSED CURB
PROPOSED CONCRETE
CONSTRUCTION – ENTRANCE/EXIT
CHECK DAM
DIVERSION BERM
DOWNDRAIN STRUCTURE – TEMPORARY
ROCK DAM
SEDIMENT BARRIER – SILT FENCE
SEDIMENT BARRIER – GRAVEL RING
SEDIMENT BARRIER – BLOCK & GRAVEL
SEDIMENT BARRIER – BLOCK
TEMPORARY SEDIMENT BASIN
SILT FENCE – TYPE A
SILT FENCE – TYPE B
SILT FENCE – TYPE C
STORM DRAIN OUTLET PROTECTION
SURFACE ROUGHENING
DISTURBED AREA STABILIZATION –TEMPORARY STABILIZATION
DISTURBED AREA STABILIZATION –TEMPORARY GRASSING
DISTURBED AREA STABILIZATION –PERMANENT GRASSING
MATTING/BLANKETS |
|--|----------------------------------|---|

QUANTITIES

Item #	Description	Unit	Quan.
2.01	SITE PREPARATION	LS	1
3.01	UNCLASSIFIED EXCAVATION	CY	45
3.40	TOPSOIL	SY	50
4.01	AGGREGATE BASE COURSE (7")	TON	50
5.01	TACK COAT	GAL	20
5.02	PRIME COAT	GAL	177
6.01	ACHM SURFACE COURSE (2")	TON	56
7.06	CONCRETE DRIVEWAY (6" THICK), STANDARD FINISH	SF	200
8.03	CONCRETE CURB AND GUTTER (CLASS 3)	LF	201
10.01	JUNCTION BOX	EA	2
10.04	CURB INLET - 4' BOX	EA	2
10.07	WING 3' EXTENSION	EA	5
10.10	REVERSE CURB INLET- 4' BOX	EA	1
13.62	TIE INTO EXISTING CONCRETE PIPE	EA	1
14.01	BERMUDA SOD	SY	50
16.01	MAINTENANCE OF TRAFFIC	LS	1
19.01	FINAL CLEANUP	LS	1
24.11	SILT FENCE - TYPE A (SFA)	LF	160
27.10	COLD MILLING ASPHALT PAVEMENT	SY	506
621.00	INLET PROTECTION	EA	2
13.18S	STORM DRAIN PIPE, 18" SIDE DRAIN	LF	194



REVISIONS	DATE

CITY OF LITTLE ROCK, ARKANSAS
BUTTERMILK ROAD DRAINAGE IMPROVEMENTS
 TOPOGRAPHIC SURVEY

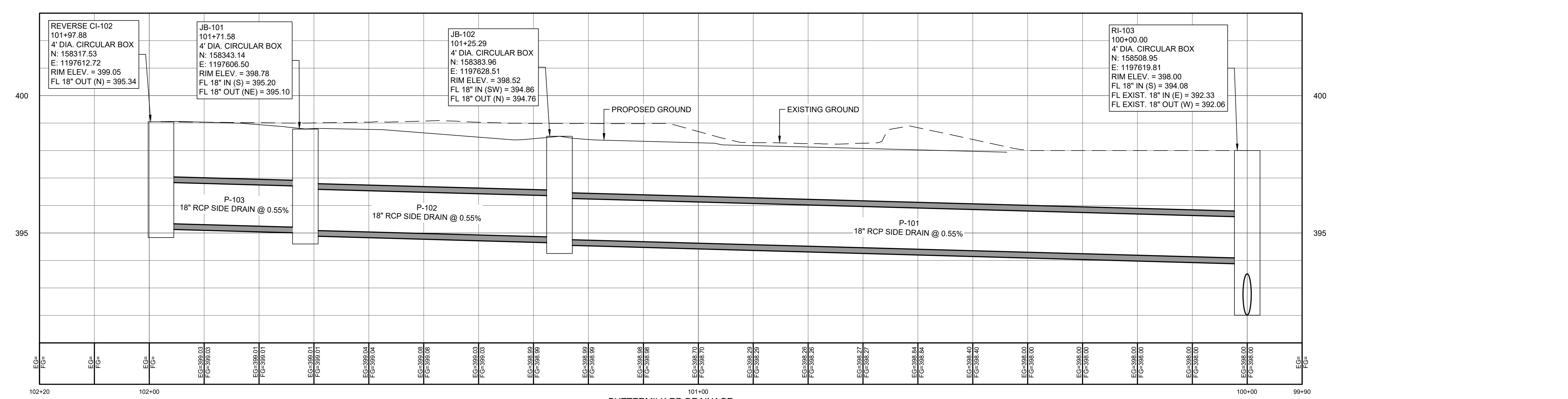
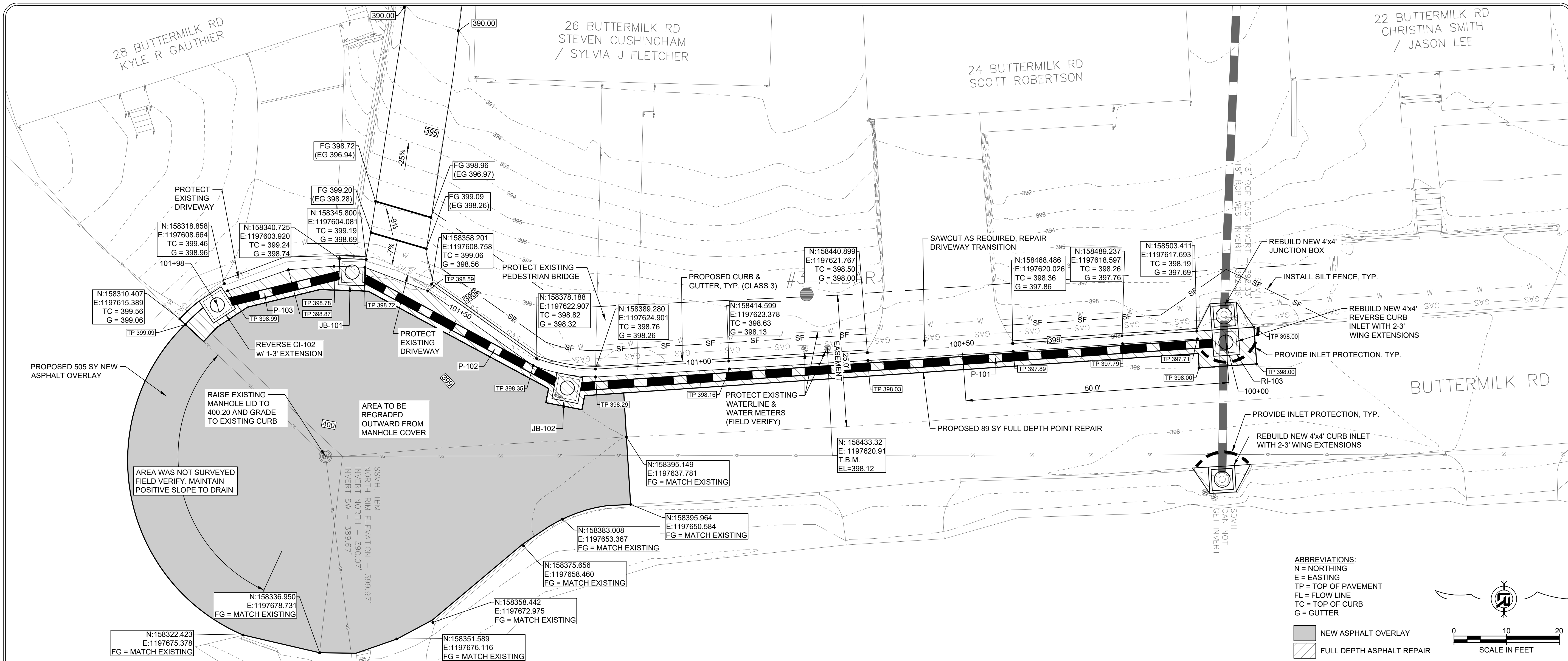
DEPARTMENT OF PUBLIC WORKS
CIVIL ENGINEERING
 701 W. MARKHAM
 LITTLE ROCK, ARKANSAS 72201

PRELIMINARY
 FOR INTERIM REVIEW ONLY
THESE DOCUMENTS ARE FOR INTERIM REVIEW AND NOT INTENDED FOR REGULATORY APPROVAL, PERMIT BIDDING OR CONSTRUCTION PURPOSES. THEY WERE PREPARED BY OR UNDER THE SUPERVISION OF:

NAME: _____ LICENSE NO.: _____
 DATE: 11/16/2024
 FIRM / BUSINESS NO.: _____ STATE: _____

DRAWN BY
 KT
DESIGNED
 KT
CHECKED
 BV
DATE
 NOVEMBER 2024
SCALE
 AS SHOWN
PROJECT NO.
 054616.004
SHEET NO.
 C3





REVISIONS	DATE

CITY OF LITTLE ROCK, ARKANSAS

BUTTERMILK ROAD DRAINAGE IMPROVEMENTS

PLAN AND PROFILE

DEPARTMENT OF PUBLIC WORKS
CIVIL ENGINEERING
701 W. MARKHAM
LITTLE ROCK, ARKANSAS 72201

PRELIMINARY
FOR INTERIM REVIEW ONLY

THESE DOCUMENTS ARE FOR INTERIM REVIEW AND NOT INTENDED FOR REGULATORY APPROVAL, PERMIT, BIDDING OR CONSTRUCTION PURPOSES. THEY WERE PREPARED BY OR UNDER THE SUPERVISION OF:

NAME: _____ # LICENSE NO. _____
DATE: 11/16/2024
FIRM: BUSINESS NO. _____ STATE: _____

DRAWN BY
KT

DESIGNED
KT

CHECKED
BV

DATE
NOVEMBER 2024

SCALE
AS SHOWN

PROJECT NO.
054616.004

SHEET NO.
C4