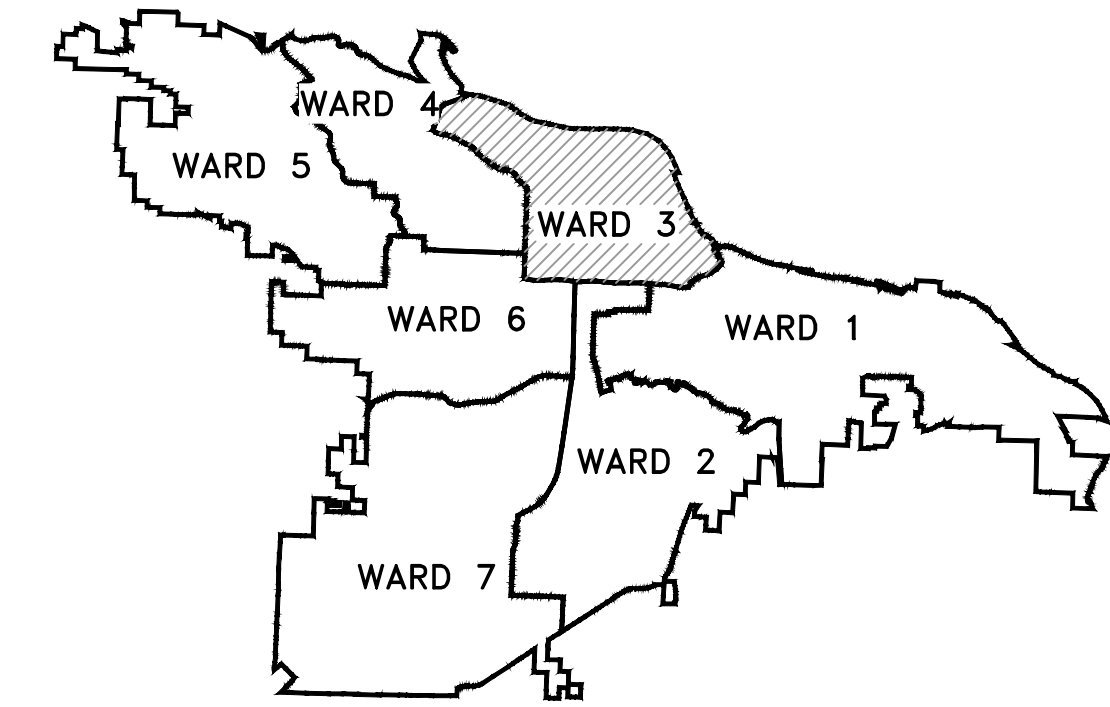


CLR PROJECT 3-22-DR-10

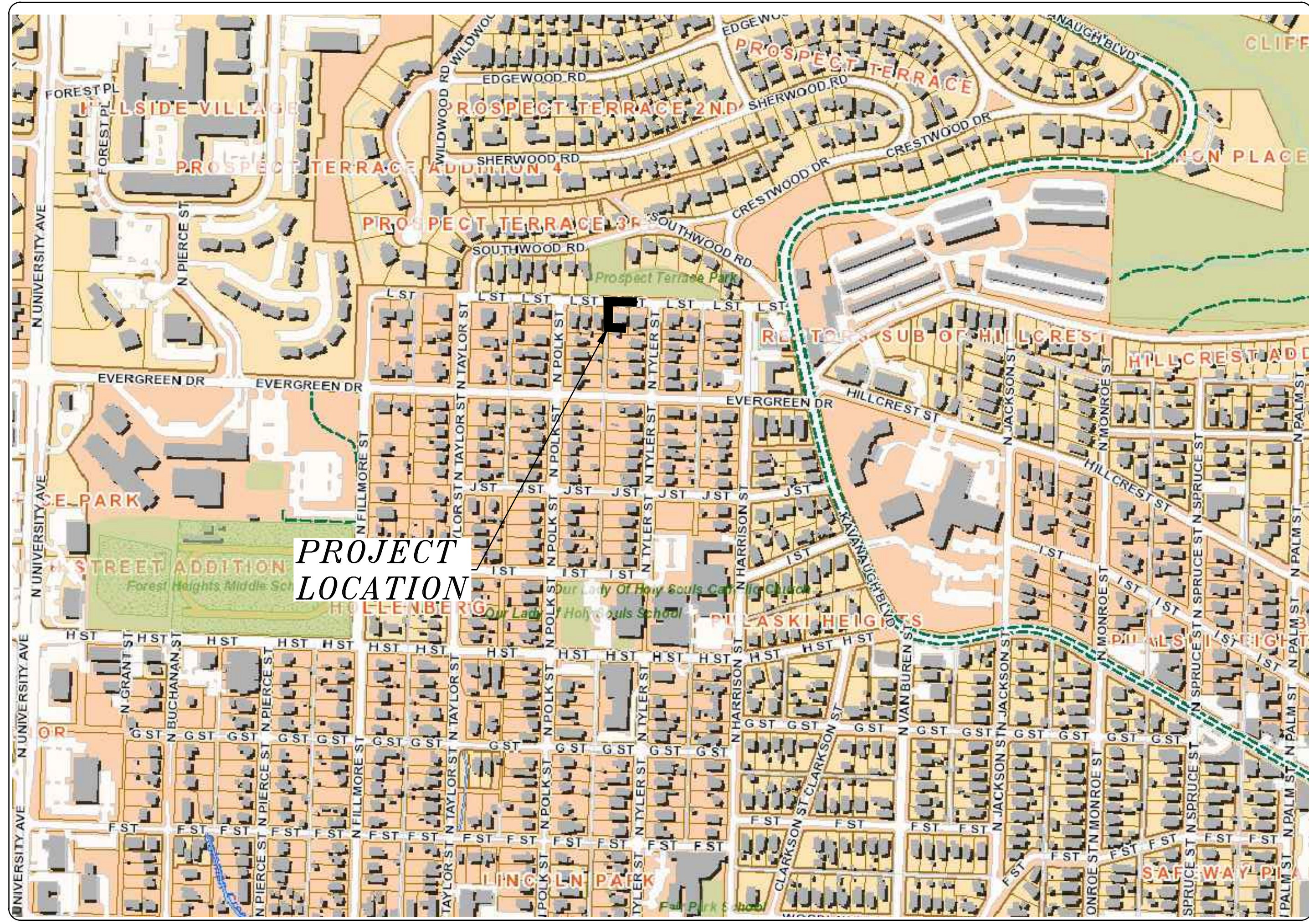
L STREET AT TYLER STREET

DRAINAGE IMPROVEMENTS

LITTLE ROCK, ARKANSAS



PROJECT LOCATION - WARD 1



| SHEET NO. | TITLE |
|-----------|--|
| C1 | COVER SHEET |
| C2 | LEGEND |
| C3 | TYPICAL SECTIONS & DETAILS |
| C4 | PLAN & PROFILE- STA. 0+00 TO STA. 2+33 |
| C5 | CROSS-SECTIONS- STA. 0+00 TO STA 2+33 |
| C6 | DRAINAGE PLAN |
| C7 | EROSION CONTROL PLAN |



2023-2025
BOND PROGRAM

DEPARTMENT OF PUBLIC WORKS
CIVIL ENGINEERING
701 WEST MARKHAM STREET
LITTLE ROCK, ARKANSAS 72201



FINAL- 100% SUBMITTAL

| REVISIONS | DATE |
|-----------|------|
| | |
| | |

CITY OF LITTLE ROCK, ARKANSAS
L STREET DRAINAGE IMPROVEMENTS
COVER SHEET

DEPARTMENT OF PUBLIC WORKS
CIVIL ENGINEERING
701 W. MARKHAM
LITTLE ROCK, ARKANSAS 72201

STATE OF ARKANSAS
REGISTERED PROFESSIONAL ENGINEER
No. 7115
RODNEY BREUER

| | |
|-------------|------------|
| DRAWN BY | JJ |
| DESIGNED | KP |
| CHECKED | KP |
| DATE | 07.25.24 |
| SCALE | NTS |
| PROJECT NO. | 3-22-DR-10 |
| SHEET NO. | C1 |

| REVISIONS | DATE |
|-----------|----------|
| REV 1 | 10.01.24 |

| ITEM # | ITEM DESCRIPTION | UNIT | QUANTITY |
|---------|---|------|----------|
| 2.01 | SITE PREPARATION (INCLUDES TREE REMOVAL, CLEARING & GRUBBING) | L.S. | 1 |
| 3.02 | COMPACTED EMBANKMENT/SELECT FILL | C.Y. | 44 |
| 4.01 | AGGREGATE BASE COURSE | TON | 26 |
| 7.06 | CONCRETE DRIVEWAY APRON (6" THICK) STANDARD FINISH | S.F. | 306 |
| 7.08 | CONCRETE PAVEMENT REPAIR, (8" THICK) | S.F. | 552 |
| 8.03 | CONCRETE CURB AND GUTTER (CLASS 3) | L.F. | 81 |
| 10.01 | JUNCTION BOX (4') | EA. | 2 |
| 10.04 | CURB INLET - 4' BOX | EA. | 2 |
| 10.07 | WING 3/ EXTENSION | EA. | 4 |
| 13.24S | STORM DRAIN PIPE, 24" (SIDE) (INCLUDES BACKFILL) | L.F. | 232 |
| 13.63 | CONCRETE PLUG ON EXISTING STORM DRAIN | E.A. | 1 |
| 14.01 | SOLID SODDING, BERMUDA (INCLUDES TOPSOIL) | S.Y. | 67 |
| 16.01 | MAINTENANCE OF TRAFFIC | L.S. | 1 |
| 17.01 | PAVEMENT REPAIRS (UTILITY CUT PW-25) | S.Y. | 56 |
| 18.45 | GROUTED RIPRAP | C.Y. | 13 |
| 18.55 | WATER FOR DUST CONTROL | GAL | 100 |
| 19.01 | FINAL CLEANUP | L.S. | 1 |
| 24.09 | SEDIMENT BARRIER, BLOCK (SD4) | EA. | 1 |
| 24.11 | SILT FENCE - TYPE A (SFA) | L.F. | 279 |
| 24.16 | DISTURBED AREA STABILIZATION - TEMPORARY STABILIZATION (TS1) | AC. | 1 |
| 24.18 | DISTURBED AREA STABILIZATION - PERMANENT GRASSING (TS3) | AC. | 1 |
| 26.10 | TRENCH AND EXCAVATION SAFETY | L.S. | 1 |
| 606.24C | FLARED END SECTION, 24" | EA. | 1 |
| SP | RECONSTRUCT BRICK SIDEWALK | EA. | 1 |

| EXISTING | PROPOSED |
|------------------------------|-------------------|
| IRON ROD | ○ IR |
| PK NAIL | ○ PK |
| R.R. SPIKE | ○ RR(Sp) |
| CONC. MONUMENT | □ CM |
| WATER VALVE | ⊗ WV |
| WATER METER | ⊞ WM |
| FIRE HYDRANT | ⊙ FH |
| GAS METER | ⊞ GM |
| GAS VALVE | ⊗ GV |
| CLEAN-OUT | ○ CO |
| GUARD POST (BOLLARD) | ● GP |
| SIGN POST | — |
| BENCHMARK | ⊕ |
| STORM SEWER MANHOLE | ⊙ S |
| SANITARY SEWER MANHOLE | ⊙ S |
| TELEPHONE MANHOLE | ⊙ T |
| ELECTRIC MANHOLE | ⊙ E |
| TELEPHONE BOX | ⊞ |
| ELECTRIC BOX | ⊞ |
| CABLE BOX | ⊞ |
| UTILITY POLE | ⊙ U |
| GUY WIRE | — |
| LIGHT POLE | ⊙ L |
| POST OR POLE (TYPE AS NOTED) | ⊙ |
| MAILBOX | ⊞ |
| DECIDUOUS TREE | ⊙ |
| EVERGREEN/CONIFEROUS TREE | ⊙ |
| BUSH | ⊙ |
| PROPERTY LINE | — |
| SETBACK LINE | — |
| EASEMENT LINE | — |
| CURB | — |
| FENCE | — |
| OVERHEAD UTILITY | — OHP — OHP |
| UNDERGROUND TELEPHONE | — UGT — UGT — UGT |
| UNDERGROUND ELECTRIC | — UGE — UGE — UGE |
| WATER LINE | — 8"W — 8"W — 8"W |
| SEWER LINE | — SAN — |
| GAS LINE | — GAS — GAS — GAS |
| STORM SEWER/CULVERT | — 24" CMP/RCP/DIP |
| CONTOUR LINE | — 650 |

CITY OF LITTLE ROCK, ARKANSAS
 L STREET DRAINAGE IMPROVEMENTS
 LEGEND

DEPARTMENT OF PUBLIC WORKS
 CIVIL ENGINEERING
 701 W. MARKHAM
 LITTLE ROCK, ARKANSAS 72201

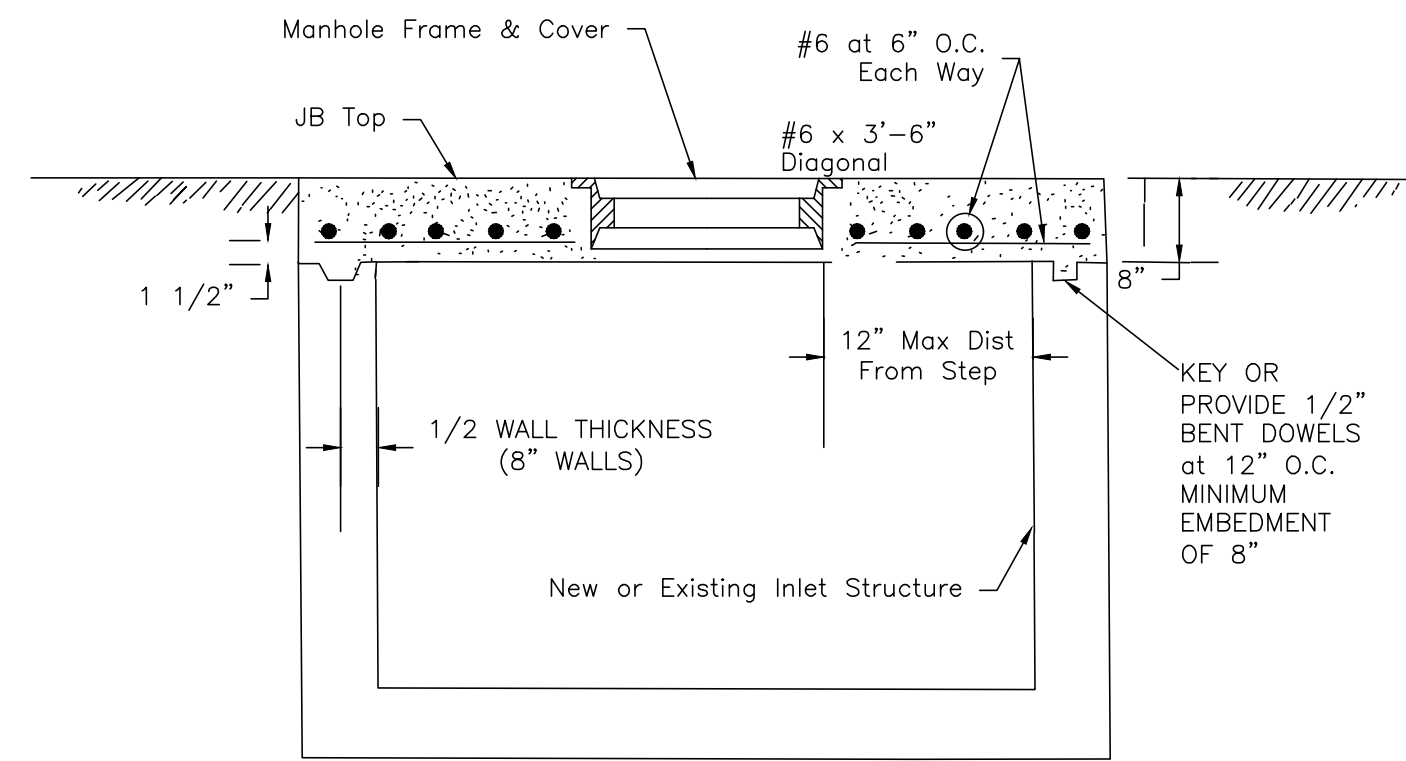


| | |
|--------------------|------------|
| DRAWN BY | JJ |
| DESIGNED | KP |
| CHECKED | KP |
| DATE | 07.25.24 |
| SCALE | NTS |
| PROJECT NO. | 3-22-DR-10 |
| SHEET NO. | C2 |

FINAL- 100% SUBMITTAL

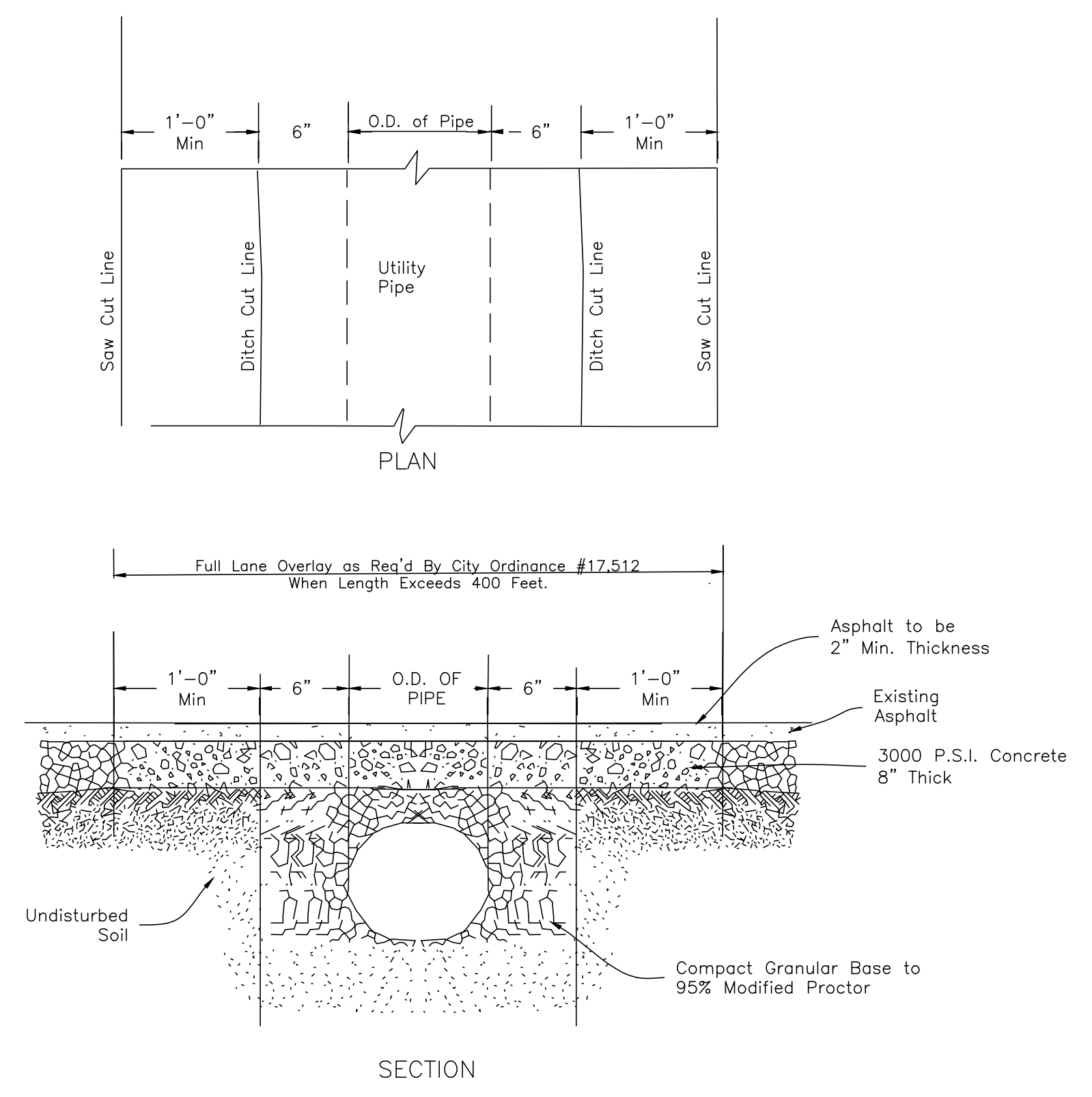
| REVISIONS | DATE |
|-----------|------|
| | |
| | |

CITY OF LITTLE ROCK, ARKANSAS
L STREET DRAINAGE IMPROVEMENT
TYPICAL SECTIONS & DETAILS

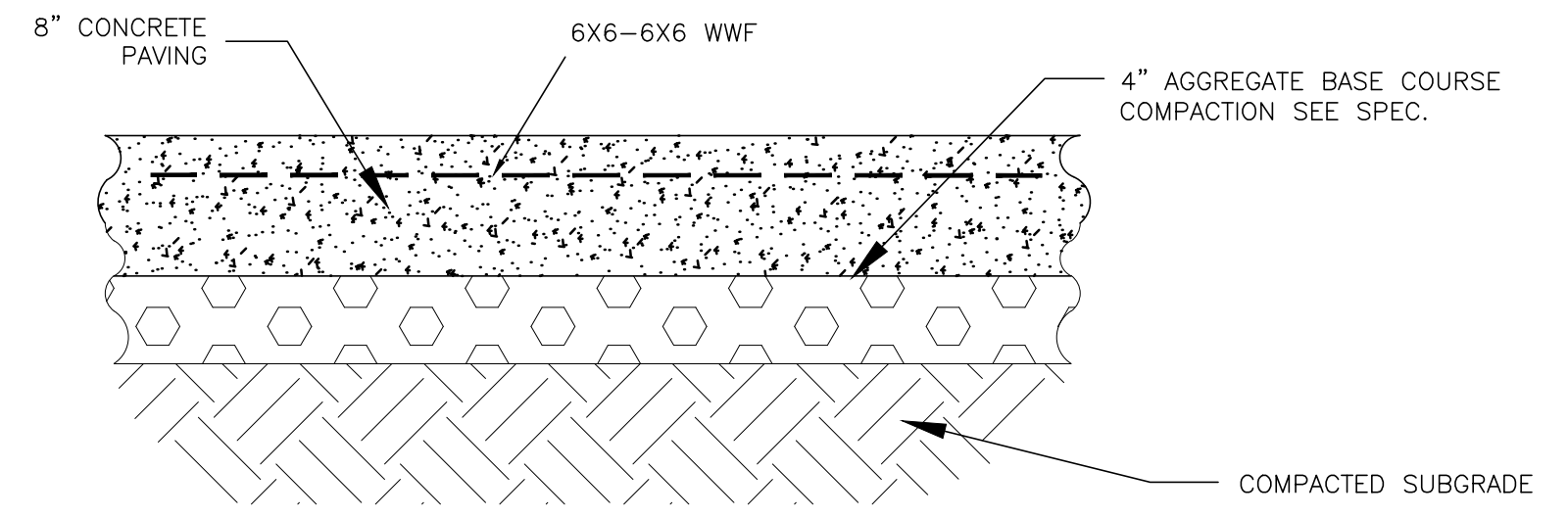


NOTE: Junction box top may be held below ACHM Surface and manhole cover extended up flush with paving surface.

PW-11

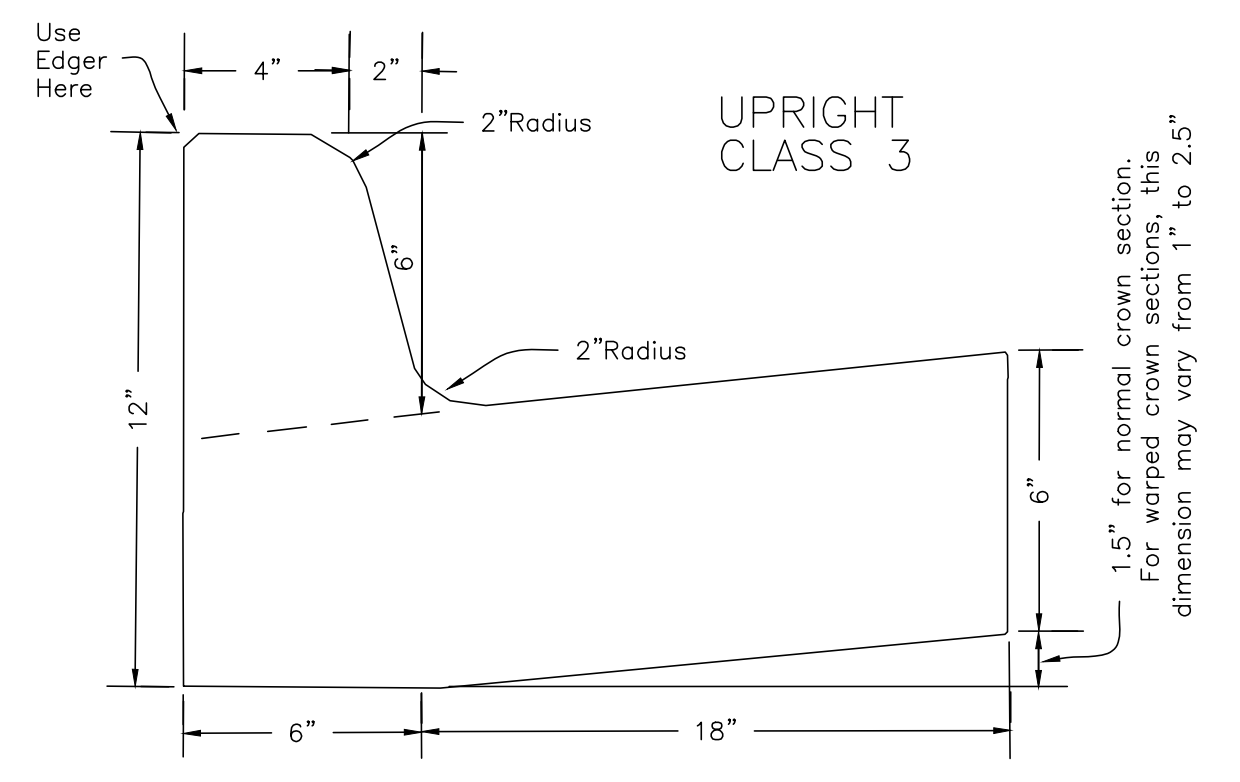


PW-25

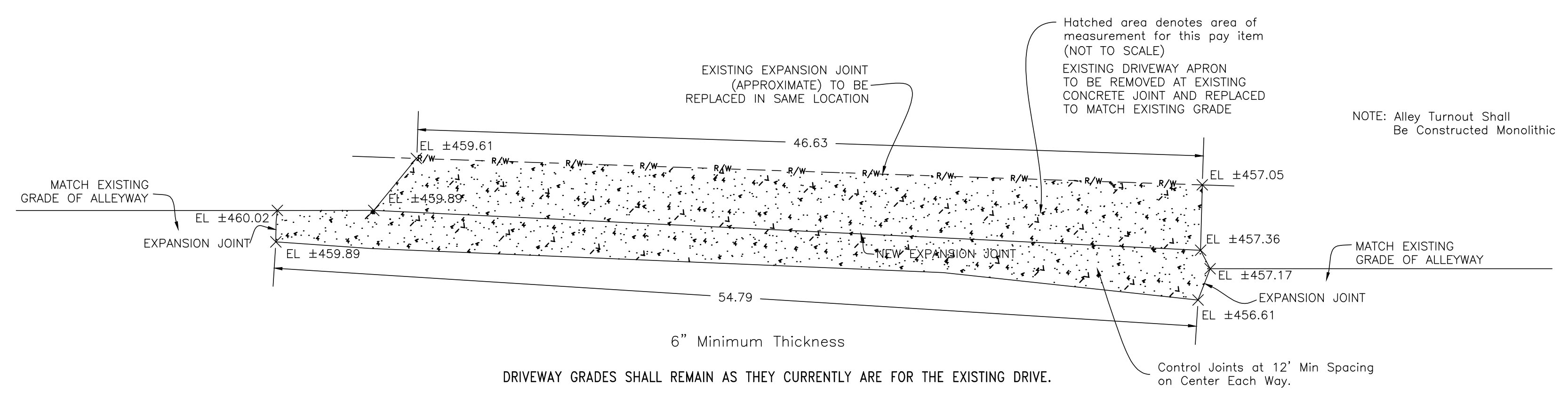


CONCRETE PAVING

NOTE: ADD 24" LONG #4 REBAR @4' O.C. W/ 12" DOWELED INTO EXISTING CONCRETE AND 12" IN NEW CONCRETE




UPRIGHT CLASS 3



DRIVE INLET DETAIL

FINAL- 100% SUBMITTAL

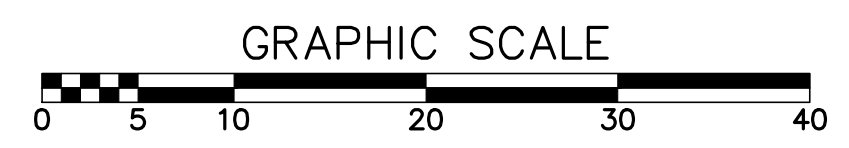
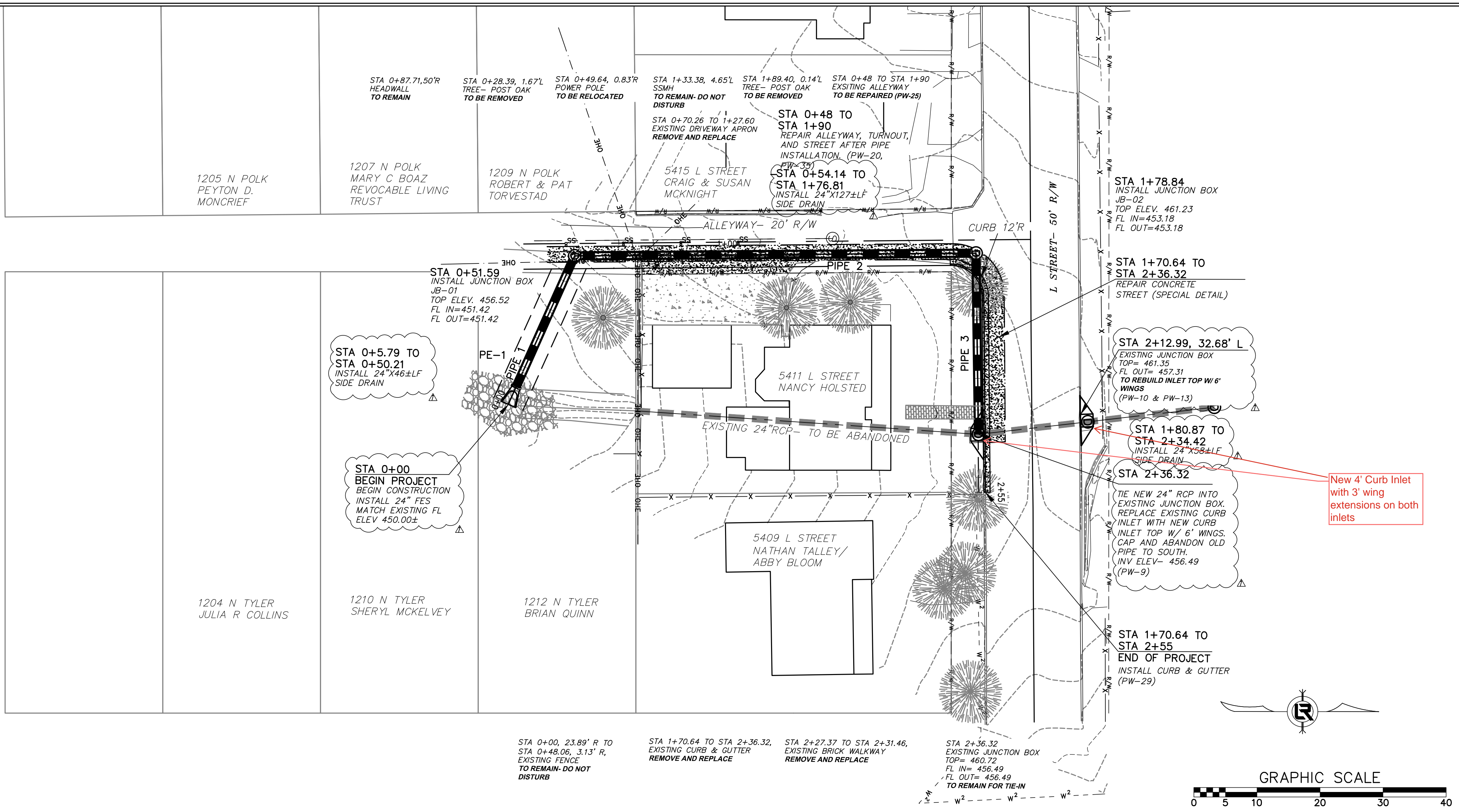

DEPARTMENT OF PUBLIC WORKS
CIVIL ENGINEERING
701 W. MARKHAM
LITTLE ROCK, ARKANSAS 72201



RODNEY BREUER

| | |
|--------------------|------------------|
| DRAWN BY | JJ |
| DESIGNED | KP |
| CHECKED | KP |
| DATE | 07.25.24 |
| SCALE | NTS |
| PROJECT NO. | CLR #03-22-DR-10 |
| SHEET NO. | C3 |

| REVISIONS | DATE |
|-----------|----------|
| REV 1 | 10.01.24 |

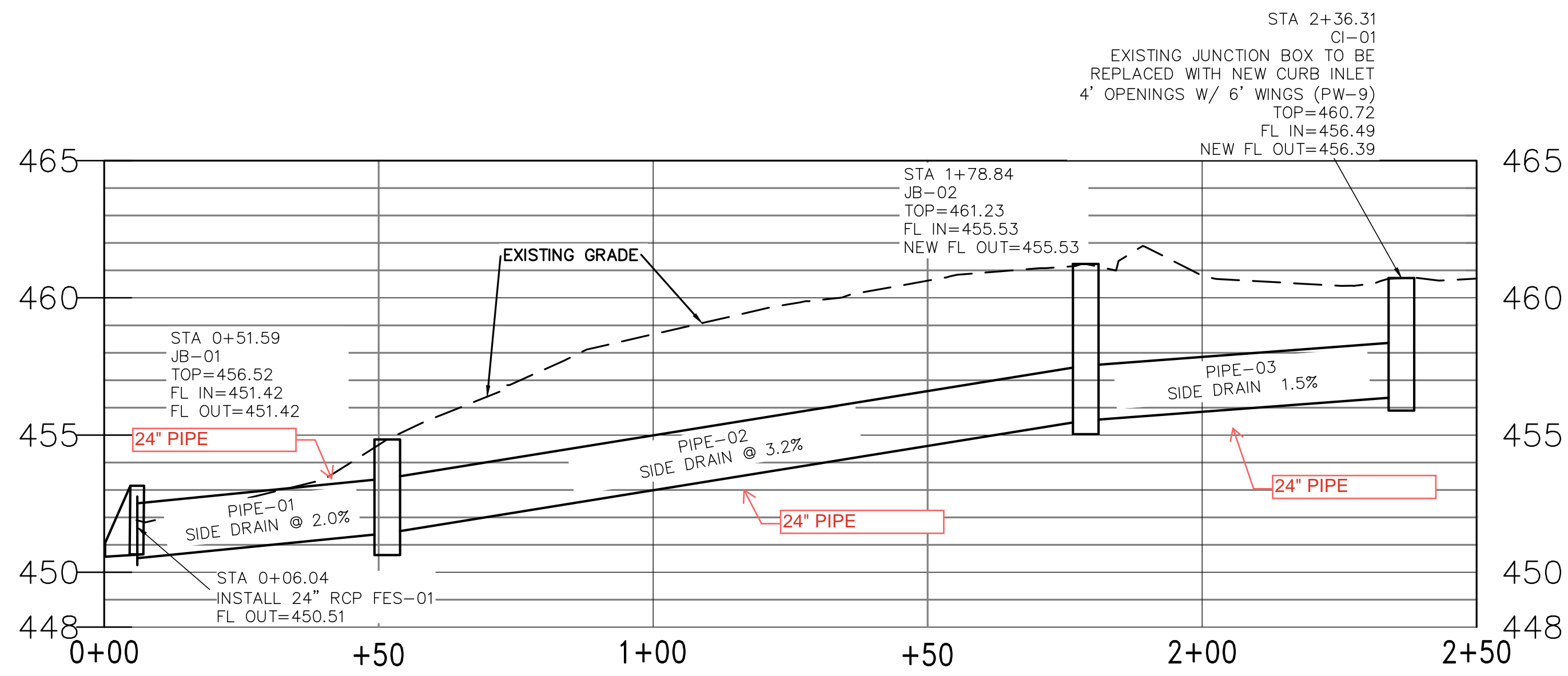
CITY OF LITTLE ROCK, ARKANSAS
L STREET DRAINAGE IMPROVEMENT
PLAN & PROFILE




 DEPARTMENT OF PUBLIC WORKS
 CIVIL ENGINEERING
 701 W. MARKHAM
 LITTLE ROCK, ARKANSAS 72201


 10.31.24

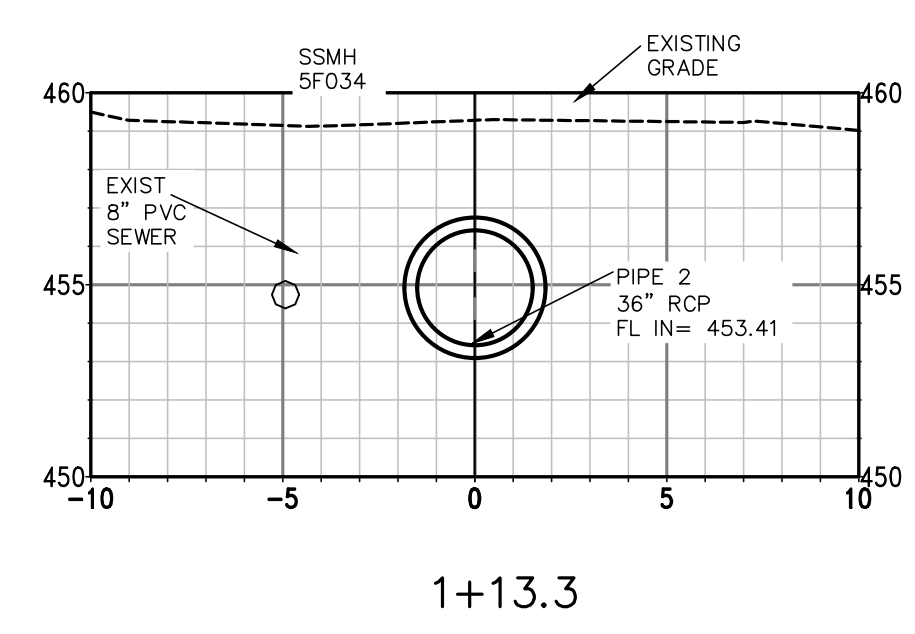
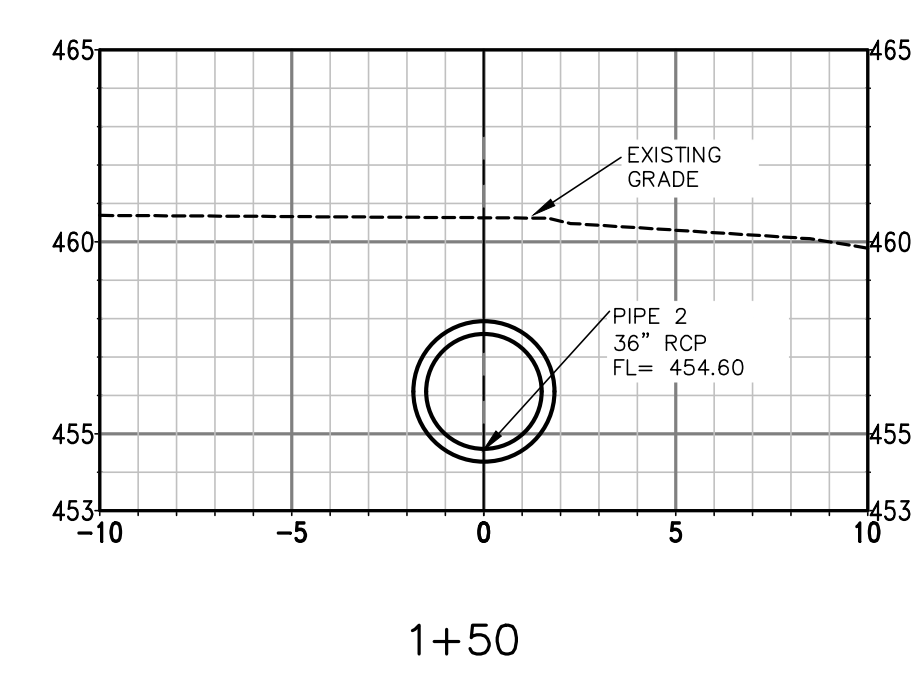
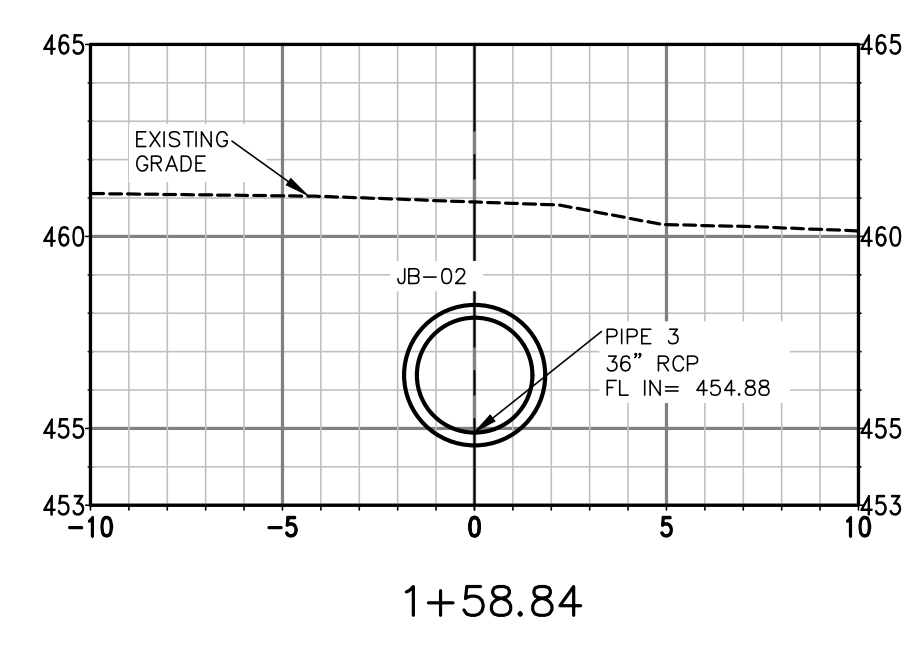
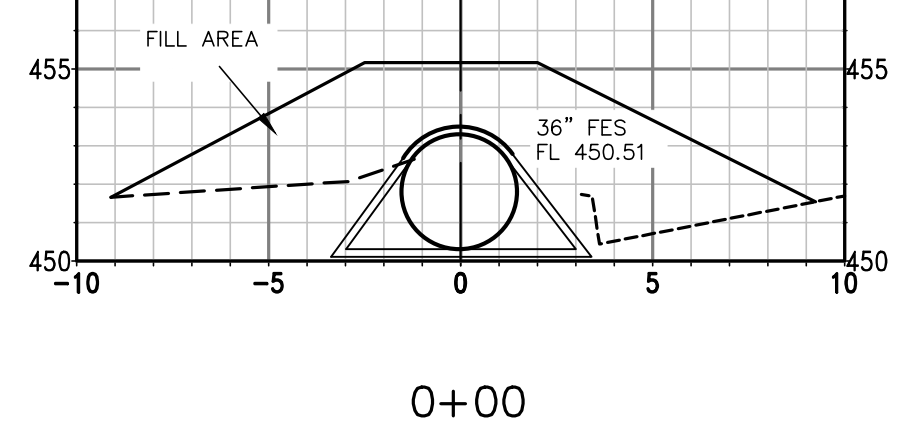
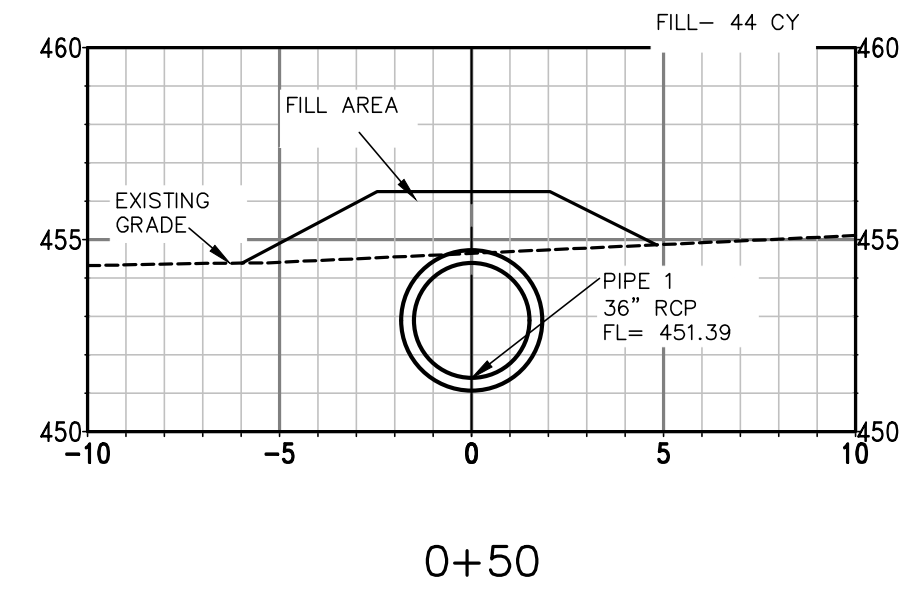
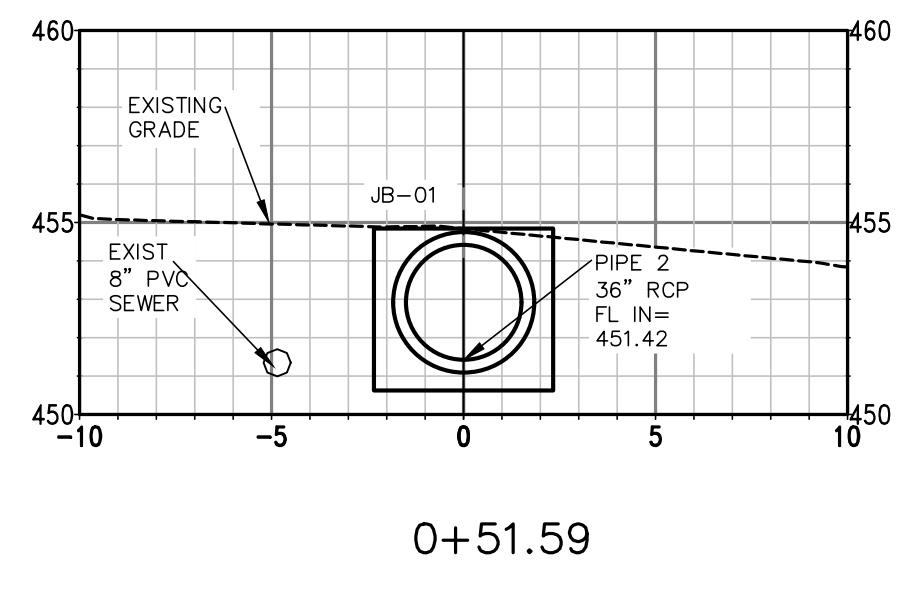
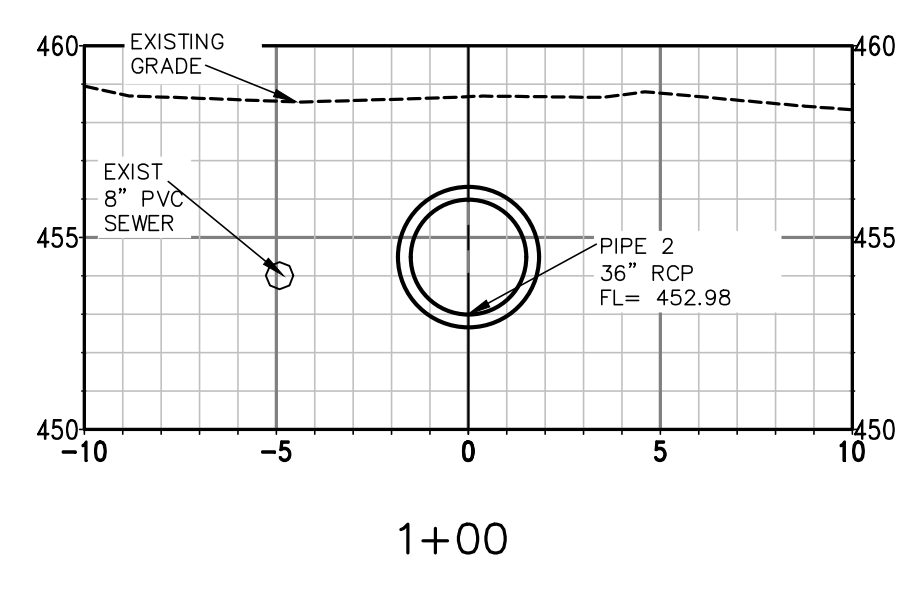
| | |
|--------------------|-------------------|
| DRAWN BY | JP |
| DESIGNED | KP |
| CHECKED | KP |
| DATE | 07.17.24 |
| SCALE | 1"=20' H, 1"=5' V |
| PROJECT NO. | CLR 3-22-DR-10 |
| SHEET NO. | C4 |



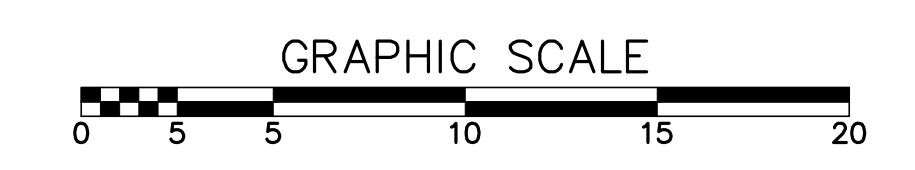
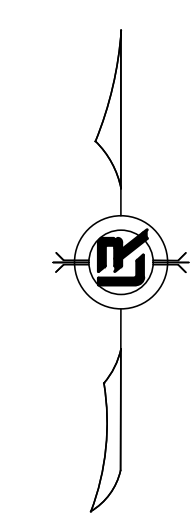
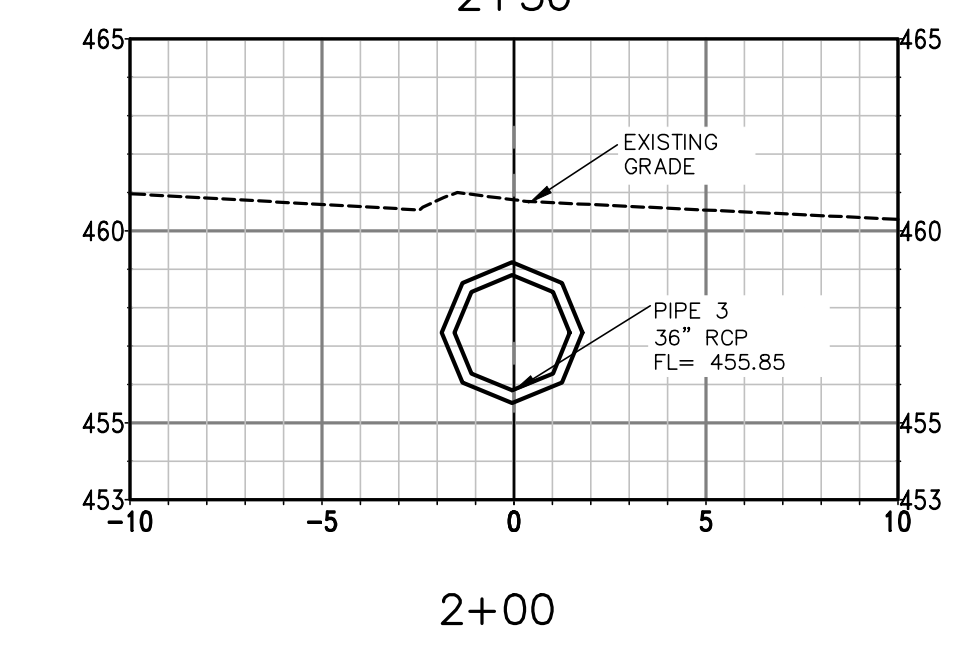
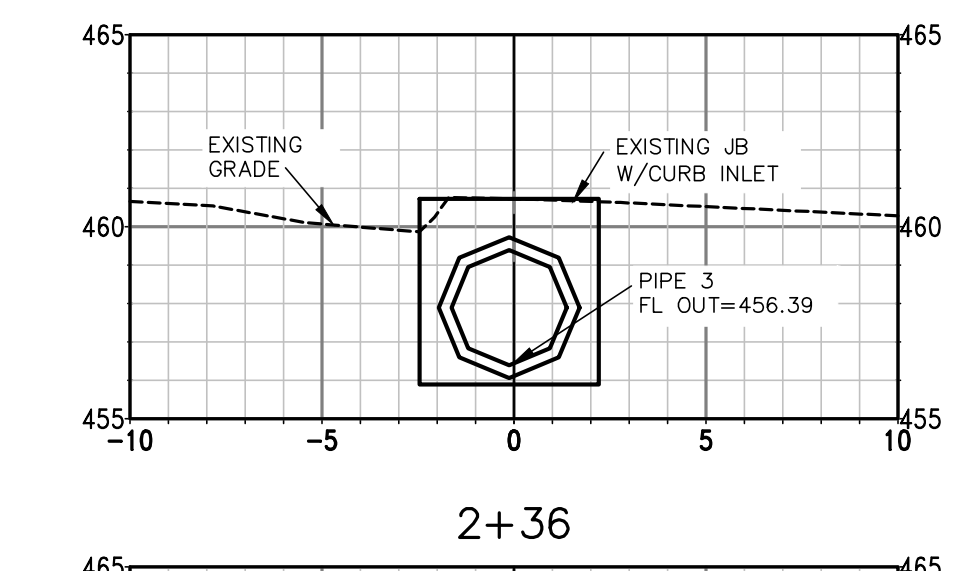
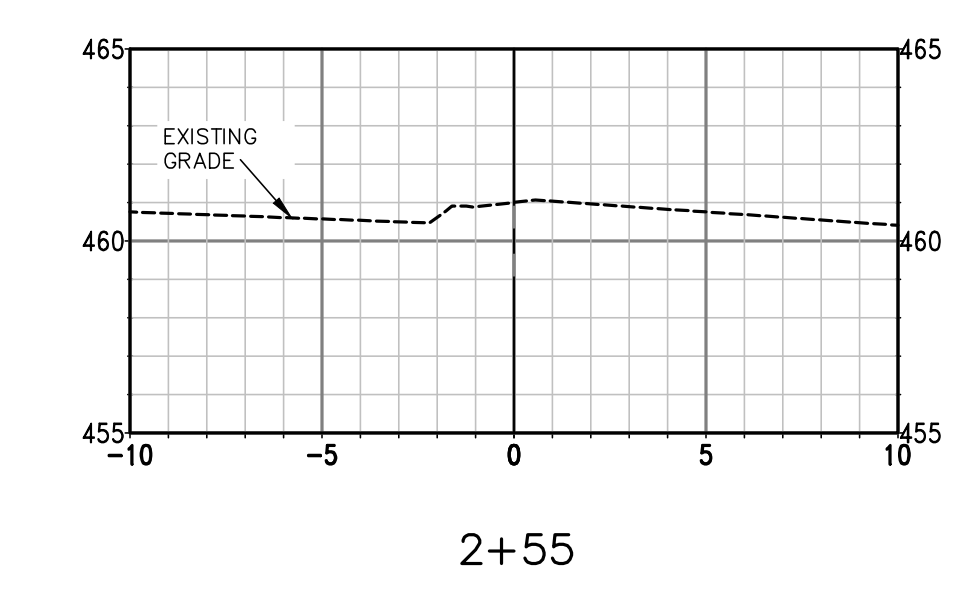
FINAL- 100% SUBMITTAL

| REVISIONS | DATE |
|-----------|------|
| | |
| | |


**CITY OF LITTLE ROCK, ARKANSAS
L STREET DRAINAGE IMPROVEMENT
CROSS SECTIONS**

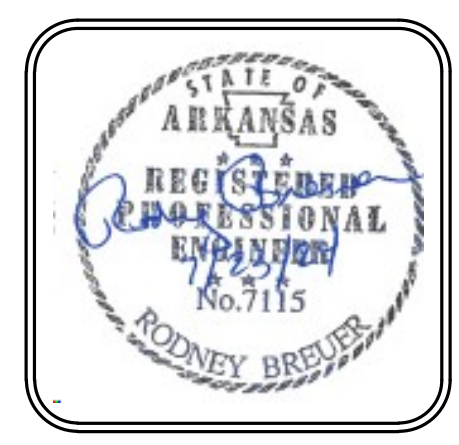


All pipe is 24" side drain



FINAL- 100% SUBMITTAL



 DEPARTMENT OF PUBLIC WORKS
 CIVIL ENGINEERING
 701 W. MARKHAM
 LITTLE ROCK, ARKANSAS 72201



| | |
|--------------------|------------------|
| DRAWN BY | JJ |
| DESIGNED | KP |
| CHECKED | KP |
| DATE | 07.17.24 |
| SCALE | 1"=5' |
| PROJECT NO. | CLR #03-22-DR-10 |
| SHEET NO. | C5 |

| REVISIONS | DATE |
|-----------|------|
| | |
| | |

CITY OF LITTLE ROCK, ARKANSAS
L STREET DRAINAGE IMPROVEMENT
EROSION CONTROL PLAN


 DEPARTMENT OF PUBLIC WORKS
 CIVIL ENGINEERING
 701 W. MARKHAM
 LITTLE ROCK, ARKANSAS 72201


 STATE OF ARKANSAS
 REGISTERED PROFESSIONAL ENGINEER
 No. 7115
 RODNEY BREJER

DRAWN BY
 JJ
DESIGNED
 KP
CHECKED
 RB
DATE
 07.25.24
SCALE
 1"=20' H
PROJECT NO.
 CLR 3-22-DR-10
SHEET NO.
 C7

NOTE:

UPON IMPLEMENTATION AND INSTALLATION OF THE FOLLOWING AREA: TRAILERS, PARKING, LAY DOWN, PORT-POTTY, WHEEL WASH, CONCRETE WASHOUT, FUEL AND MATERIAL STORAGE CONTAINERS, SOLID WASTE CONTAINERS, ETC.; IMMEDIATELY DENOTE THEM ON THE SITE MAPS AND NOTE ANY CHANGES IN LOCATION AS THEY OCCUR THROUGHOUT THE CONSTRUCTION PROCESS. IN ADDITION, NOTE ANY OFF-SITE AREA WHERE FILL IS IMPORTED FROM OR SOIL IS EXPORTED TO ON THE SITE MAPS.

PHASE 1

1. INSTALL STABILIZED CONSTRUCTION ENTRANCE/EXIT(S) AND SWPPP INFORMATION SIGN.
2. INSTALL, SILT FENCE(S) ON THE SITE. CLEAR ONLY THOSE AREAS NECESSARY TO INSTALL SILT FENCE.
3. PREPARE TEMPORARY PARKING AND STORAGE AREA.
4. HALT ALL ACTIVITIES AND CONTACT THE CITY OF LITTLE ROCK TO PERFORM INSPECTION AND ACCEPTANCE OF BMP'S.
5. CONSTRUCT AND STABILIZE SEDIMENT BASIN(S) AND SEDIMENT TRAP(S) WITH APPROPRIATE OUTFALL STRUCTURES. CLEAR ONLY THOSE AREAS NECESSARY TO INSTALL BASINS AND TRAPS.
6. INSTALL AND STABILIZE HYDRAULIC CONTROL STRUCTURES (DIKES, SWALES, CHECK DAMS, ETC.). CLEAR ONLY THOSE AREAS NECESSARY TO INSTALL HYDRAULIC CONTROL DEVICES.

PHASE 2

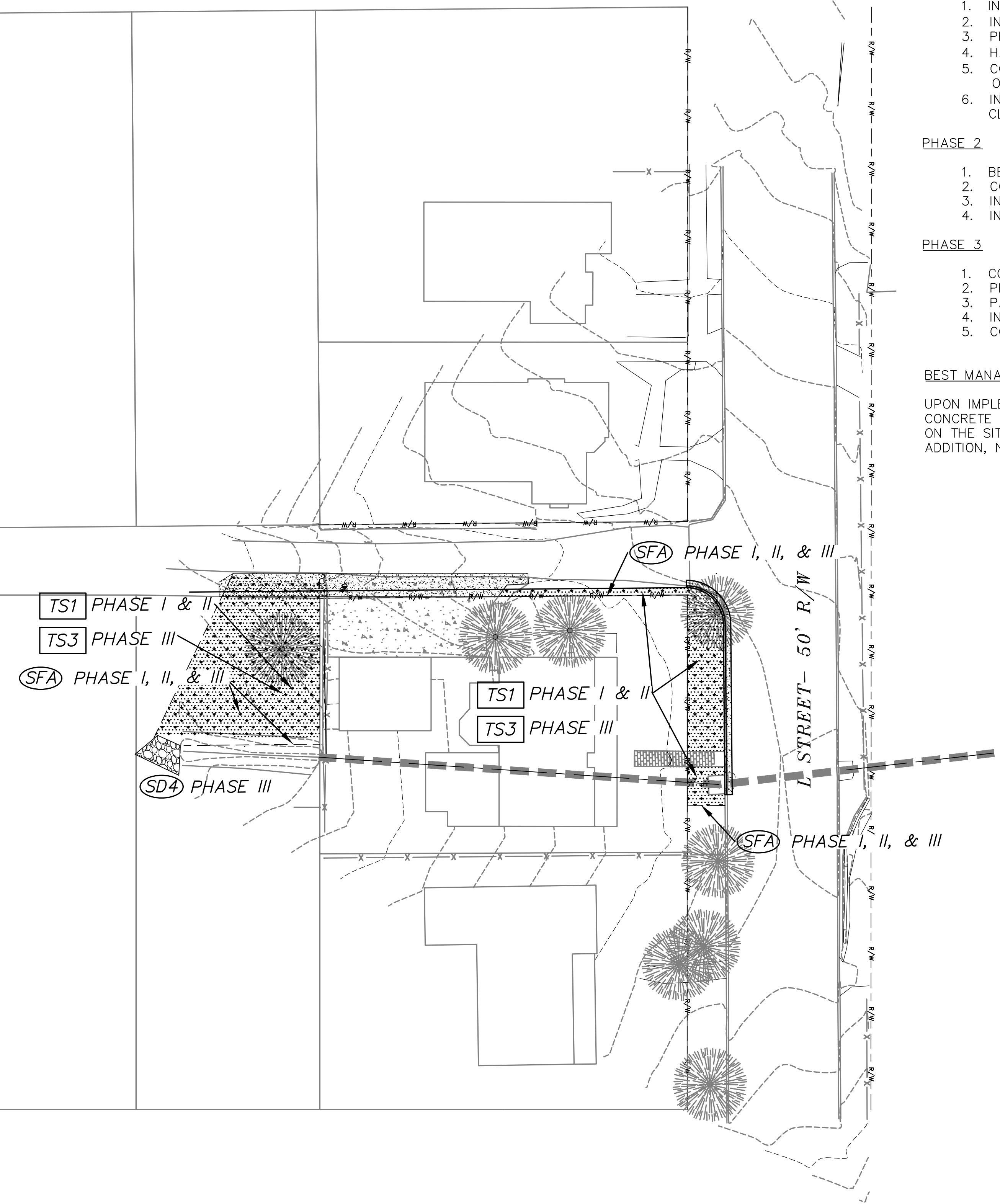
1. BEGIN SITE DEMOLITION, CLEARING AND GRUBBING.
2. CONTINUE GRADING THE SITE.
3. INSTALL UTILITIES, UNDERDRAINS, STORM SEWERS, CURBS AND GUTTERS.
4. INSTALL APPROPRIATE INLET PROTECTION DEVICES FOR PAVED AREAS AS WORK PROGRESSES.

PHASE 3

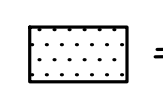
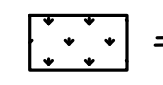
1. CONTINUE GRADING THE SITE.
2. PREPARE SITE FOR PAVING.
3. PAVE THE SITE.
4. INSTALL APPROPRIATE INLET PROTECTION DEVICES FOR PAVED AREAS AS WORK PROGRESSES.
5. COMPLETE GRADING AND INSTALLATION OF PERMANENT STABILIZATION OVER ALL AREAS.

BEST MANAGEMENT PRACTICES:

UPON IMPLEMENTATION AND INSTALLATION OF THE FOLLOWING AREA: TRAILERS, PARKING, LAY DOWN, PORT-POTTY, WHEEL WASH, CONCRETE WASHOUT, FUEL AND MATERIAL STORAGE CONTAINERS, SOLID WASTE CONTAINERS, ETC.; IMMEDIATELY DENOTE THEM ON THE SITE MAPS AND NOTE ANY CHANGES IN LOCATION AS THEY OCCUR THROUGHOUT THE CONSTRUCTION PROCESS. IN ADDITION, NOTE ANY OFF-SITE AREA WHERE FILL IS IMPORTED FROM OR SOIL IS EXPORTED TO ON THE SITE MAPS.



KEY:

-  = **TS1** TEMPORARY STABILIZATION
-  = **TS3** PERMANENT GRASSING

FINAL- 100% SUBMITTAL