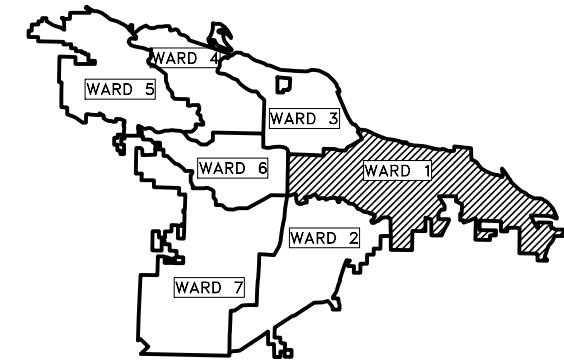


# CLR PROJECT #01-22-ST-99

## 13TH STREET

### LITTLE ROCK, ARKANSAS

#### W. 13TH STREET FROM FAIR PARK TO FILLMORE

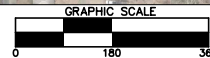
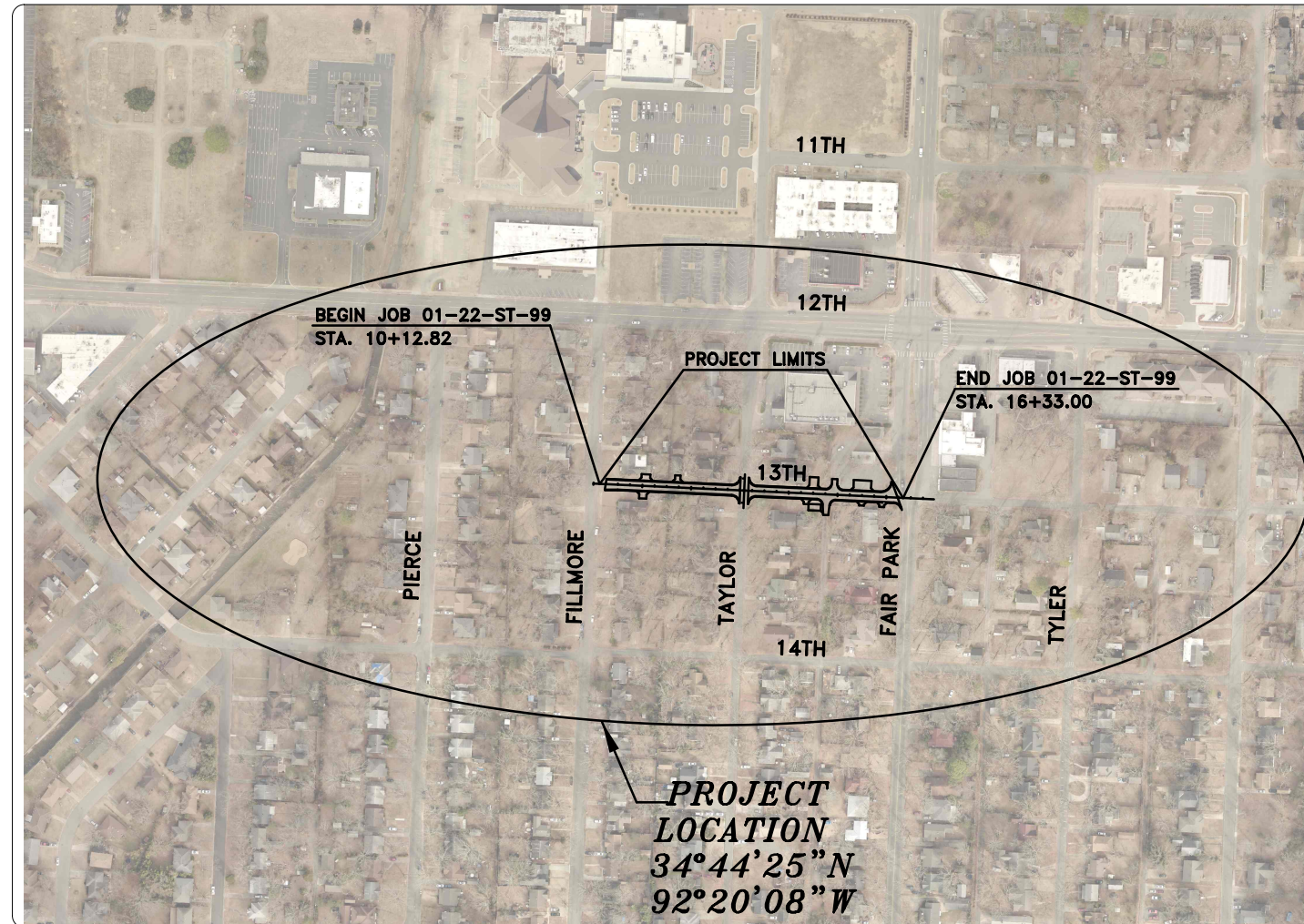


PROJECT LOCATION – WARD 1

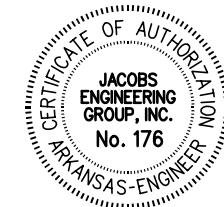
REVISIONS	DATE

CITY OF LITTLE ROCK, ARKANSAS  
W. 13TH STREET FROM FAIR PARK TO FILLMORE

COVER SHEET



SHEET NO.	TITLE
C-01	TITLE SHEET
C-02	LEGEND, NOTES, AND QUANTITIES
C-03	TYPICAL SECTION SHEET
C-04 - C-05	TEMPORARY EROSION CONTROL SHEETS
C-06 - C-07	MAINTENANCE OF TRAFFIC SHEETS
C-08 - C-09	FIELD TIES / LAYOUT SHEETS
C-10 - C-11	PLAN AND PROFILE 13TH STREET SHEETS
C-12 - C-14	DRIVEWAY DETAIL SHEETS
C-15 - C-21	CROSS SECTIONS 13TH STREET



DEPARTMENT OF PUBLIC WORKS  
CIVIL ENGINEERING  
701 W. MARKHAM  
LITTLE ROCK, ARKANSAS 72201



09/13/2024

DEPARTMENT OF PUBLIC WORKS  
CIVIL ENGINEERING  
701 WEST MARKHAM STREET  
LITTLE ROCK, ARKANSAS 72201

# Jacobs

Jacobs Engineering Group, Inc.  
1701 Centerview Dr., Suite 202  
Little Rock, Arkansas 72211  
Phone: 501.223.0515  
www.jacobs.com


DRAWN BY  
RFR  
DESIGNED  
RFR  
CHECKED  
BAP  
DATE  
09/13/24  
SCALE  
NTS  
PROJECT NO.  
01-22-ST-99  
SHEET NO.  
C-01

SUMMARY OF QUANTITIES			
ITEM NUMBER	ITEM	QUANTITY	UNIT
2.01	SITE PREPARATION	1	LUMP SUM
3.01	UNCLASSIFIED EXCAVATION	105	CU. YD.
3.07	COMPACTED EMBANKMENT	20	CU. YD.
4.01	AGGREGATE BASE COURSE (CLASS 7)	80	TON
5.01	TACK COAT	340	GAL.
6.01	ASPHALT CONCRETE (HOT MIX, SURFACE COURSE)	250	TON
7.04	CONCRETE DRIVEWAYS (6")	2970	SQ. FT.
8.01	CONCRETE CURB AND GUTTER	975	LIN. FT.
14.01	SOLID SODDING (INCLUDES 4" TOPSOIL)	500	SQ. YD.
16.01	MAINTENANCE OF TRAFFIC	1	LUMP SUM
18.02	MANHOLE RINGS AND COVERTS ADJUSTED TO GRADE	1	EACH
18.01	REMOVE & REPLACE CHAINLINK FENCE (4')	80	LIN. FT.
18.01	REMOVE & REPLACE WOODEN PRIVACY FENCE (6')	270	LIN. FT.
18.10	WATER FOR DUST CONTROL	100	GAL.
19.03	CLEANUP	1	LUMP SUM
24.01	MULCH COVER	0.5	ACRE
24.03	TEMPORARY SEEDING	0.5	ACRE
24.04	SILT FENCE	725	LIN. FT.
24.05	TEMPORARY FENCING FOR TREE PROTECTION	205	LIN. FT.
27.07	COLD MILLING ASPHALT PAVEMENT	1150	SQ. YD.

EXISTING	PROPOSED
IRON ROD	PROPOSED CONTOUR
PK NAIL	PROPOSED SPOT ELEVATION
R.R. SPIKE	PROPOSED SPOT CURB ELEVATION
CONC. MONUMENT	STORM SEWER - PIPE
WATER VALVE	STORM SEWER - MITERED END SECTION
WATER METER	STORM SEWER - GRATE INLET
FIRE HYDRANT	STORM SEWER - JUNCTION BOX
GAS METER	STORM SEWER - FLARED END SECTION
GAS VALVE	STORM SEWER - HEADWALL
CLEAN-OUT	STORM SEWER - SINGLE WING
GUARD POST (BOLLARD)	STORM SEWER - DOUBLE WING
SIGN POST	STORM SEWER - AREA INLET
BENCHMARK	GRADE BREAK LINE
STORM SEWER MANHOLE	HIGH POINT
SANITARY SEWER MANHOLE	LOW POINT
TELEPHONE MANHOLE	CUT LINE
ELECTRIC MANHOLE	FILL LINE
TELEPHONE BOX	SANITARY SEWER PIPE
ELECTRIC BOX	SANITARY SEWER MANHOLE
CABLE BOX	PROPOSED CURB
UTILITY POLE	PROPOSED CONCRETE
GUY WIRE	CONSTRUCTION - ENTRANCE/EXIT
LIGHT POLE	CHECK DAM
POST OR POLE (TYPE AS NOTED)	DIVERSION BERM
MAILBOX	DOWNDRAIN STRUCTURE - TEMPORARY
DECIDUOUS TREE	ROCK DAM
EVERGREEN/CONIFEROUS TREE	SEDIMENT BARRIER - SILT FENCE
BUSH	SEDIMENT BARRIER - GRAVEL RING
PROPERTY LINE	SEDIMENT BARRIER - BLOCK & GRAVEL
SETBACK LINE	SEDIMENT BARRIER - BLOCK
EASEMENT LINE	TEMPORARY SEDIMENT BASIN
CURB	SILT FENCE - TYPE A
FENCE	SILT FENCE - TYPE B
OVERHEAD ELECTRIC	SILT FENCE - TYPE C
OVERHEAD TELEPHONE	STORM DRAIN OUTLET PROTECTION
OVERHEAD CABLE	SURFACE ROUGHENING
UNDERGROUND TELEPHONE	DISTURBED AREA STABILIZATION -TEMPORARY STABILIZATION
UNDERGROUND ELECTRIC	DISTURBED AREA STABILIZATION -TEMPORARY GRASSING
UNDERGROUND CABLE	DISTURBED AREA STABILIZATION -PERMANENT GRASSING
WATER LINE	MATTING/BLANKETS
SEWER LINE	
GAS LINE	
STORM SEWER/CULVERT	
EDGE OF WOODS	
CONTOUR LINE	

REVISIONS	DATE

CITY OF LITTLE ROCK, ARKANSAS  
W. 13TH STREET FROM FAIR PARK TO FILLMORE  
LEGEND AND QUANTITIES

  
 DEPARTMENT OF PUBLIC WORKS  
 CIVIL ENGINEERING  
 701 W. MARKHAM  
 LITTLE ROCK, ARKANSAS 72201


09/13/2024

DRAWN BY	RFR
DESIGNED	RFR
CHECKED	BAP
DATE	09/13/24
SCALE	NTS
PROJECT NO.	01-22-ST-99
SHEET NO.	C-02


T:\Job\CLR 13th Street D3798900\700 CADD Files\770 Roadway Files\References\13th\_Street-TypicalSection.dgn  
 ...13th\_Street-TypicalSection.dgn  
 9/13/2024 6:23:16 PM

REVISIONS	DATE

CITY OF LITTLE ROCK, ARKANSAS  
 W. 13TH STREET FROM FAIR PARK TO FILLMORE  
 TYPICAL SECTION

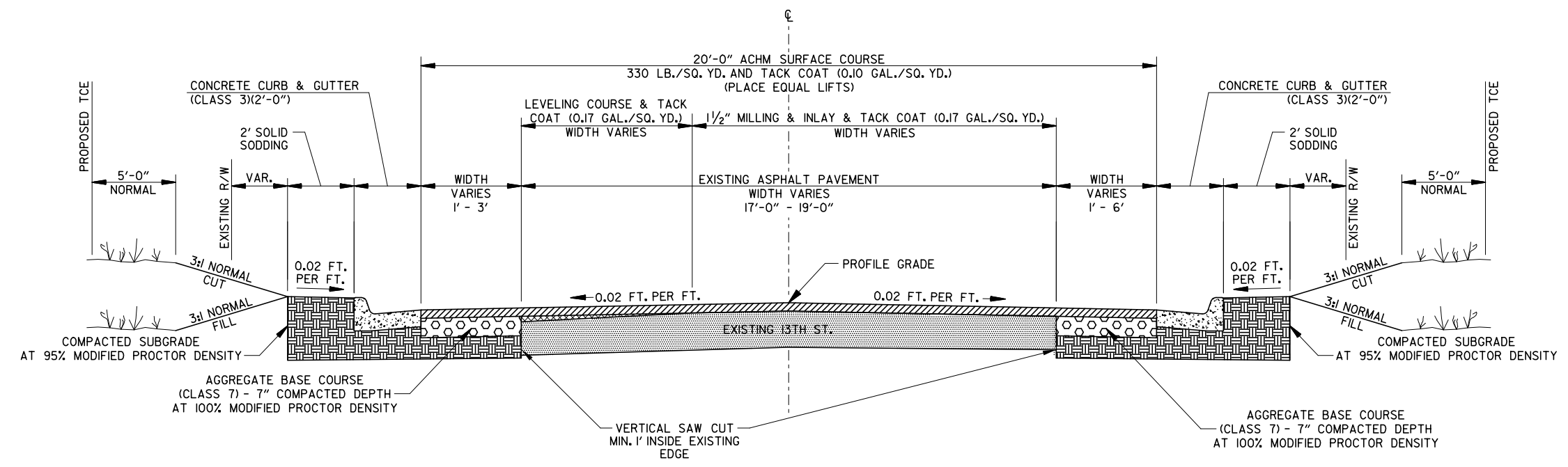


DEPARTMENT OF PUBLIC WORKS  
 CIVIL ENGINEERING  
 701 W. MARKHAM  
 LITTLE ROCK, ARKANSAS 72201



09/13/2024

DRAWN BY RFR
DESIGNED RFR
CHECKED BAP
DATE 09/13/24
SCALE NTS
PROJECT NO. 01-22-ST-99
SHEET NO. C-03



**13TH STREET TYPICAL SECTION**  
 STA. 10+25.00 TO STA. 13+00.29  
 STA. 13+17.39 TO STA. 16+33.00

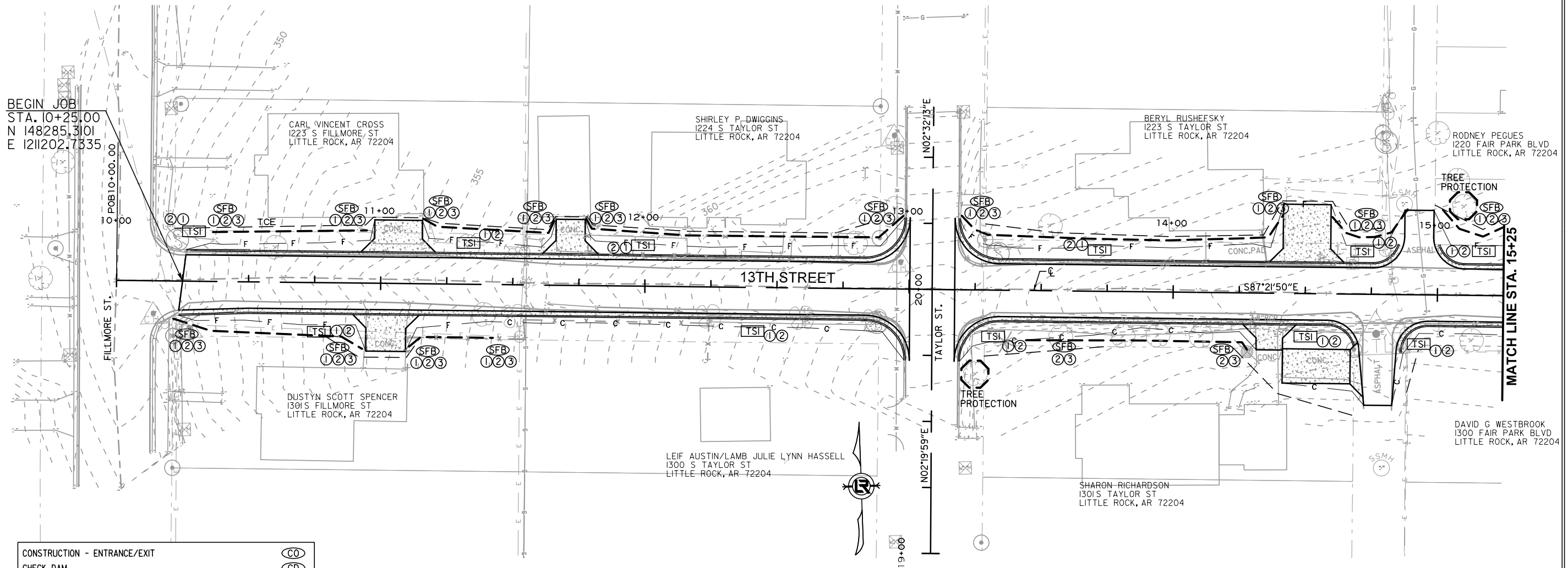
- NOTE:
- 1) REFER TO PW-22, PW-23, & PW-29 OF THE STANDARD DETAILS FOR ADDITIONAL INFORMATION.
  - 2) REFER TO PLAN SHEETS AND CROSS SECTIONS FOR DEVIATIONS.

CITY OF LITTLE ROCK, ARKANSAS  
 W. 13TH STREET FROM FAIR PARK TO FILLMORE  
 TEMPORARY EROSION CONTROL PLAN  
 13TH STREET SHEET 1

DEPARTMENT OF PUBLIC WORKS  
 CIVIL ENGINEERING  
 701 W. MARKHAM  
 LITTLE ROCK, ARKANSAS 72201

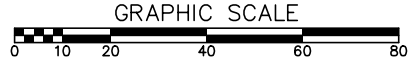
09/13/2024

DRAWN BY  
 RFR  
 DESIGNED  
 RFR  
 CHECKED  
 BAP  
 DATE  
 09/13/24  
 SCALE  
 1" = 40'  
 PROJECT NO.  
 01-22-ST-99  
 SHEET NO.  
**C-04**



CONSTRUCTION - ENTRANCE/EXIT	(CO)
CHECK DAM	(CD)
DIVERSION BERM	(DI)
DOWNDRAIN STRUCTURE - TEMPORARY	(DN)
ROCK DAM	(RD)
SEDIMENT BARRIER - SILF FENCE	(SD1)
SEDIMENT BARRIER - GRAVEL RING	(SD2)
SEDIMENT BARRIER - BLOCK & GRAVEL	(SD3)
SEDIMENT BARRIER - BLOCK	(SD4)
TEMPORARY SEDIMENT BASIN	(SBI)
SILT FENCE - TYPE A	(SFA)
SILT FENCE - TYPE B	(SFB)
SILT FENCE - TYPE C	(SFC)
STORM DRAIN OUTLET PROTECTION	(ST)
SURFACE ROUGHENING	(SU)
DISTURBED AREA STABILIZATION - TEMPORARY STABILIZATION	(TS1)
DISTURBED AREA STABILIZATION - TEMPORARY GRASSING	(TS2)
DISTURBED AREA STABILIZATION - PERMANENT GRASSING	(TS3)
MATTING/BLANKETS	(Mb)



PHASING LEGEND  
 ① PHASE 1 (INITIAL STRIP AND DEMOLITION)  
 ② PHASE 2 (BASE COURSE IN PLACE)  
 ③ PHASE 3 (PAVED, SOLID SODDING NOT YET INSTALLED)





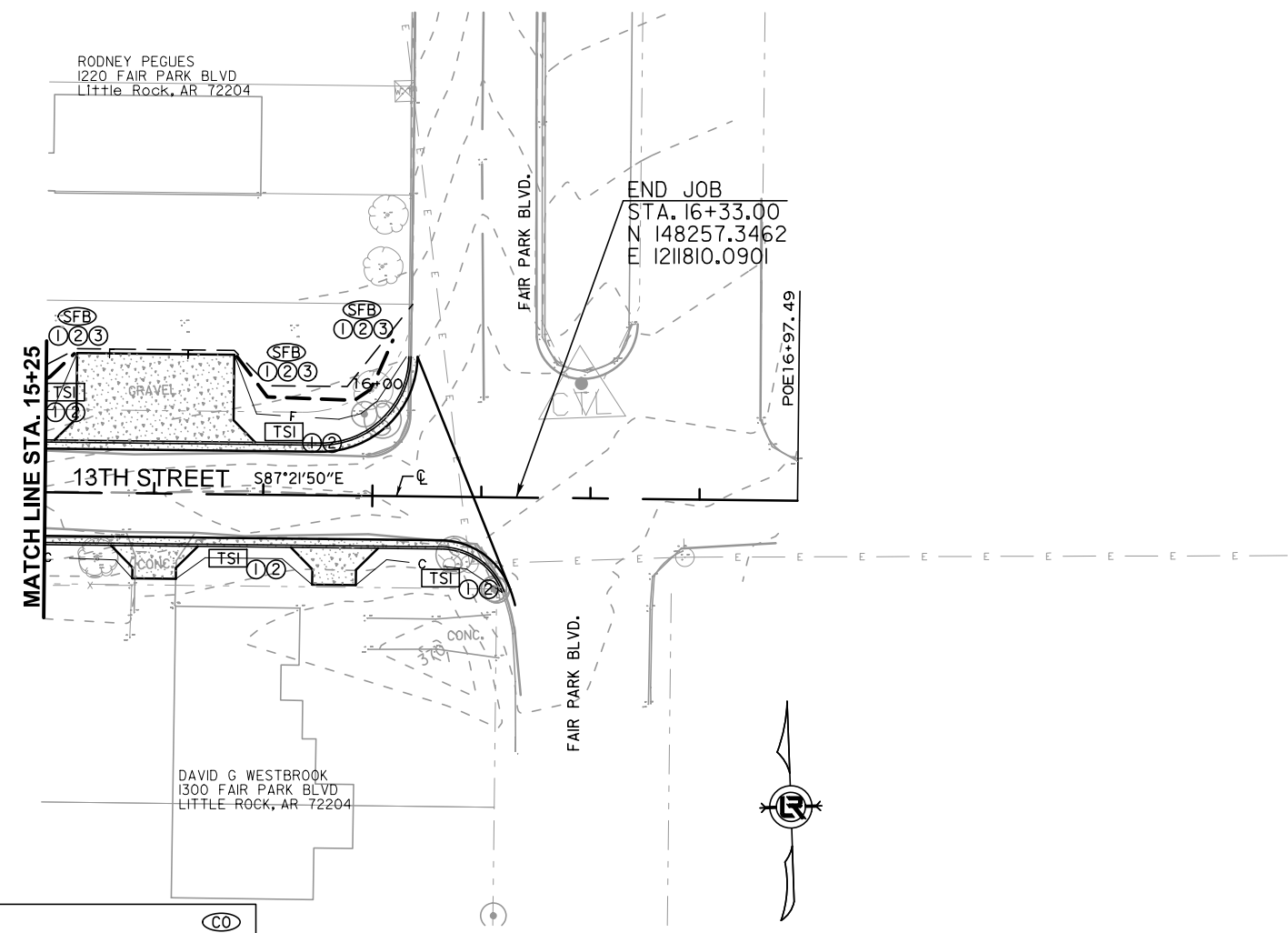
REVISIONS	DATE

CITY OF LITTLE ROCK, ARKANSAS  
W. 13TH STREET FROM FAIR PARK TO FILLMORE  
TEMPORARY EROSION CONTROL PLAN  
13TH STREET SHEET 2

  
DEPARTMENT OF PUBLIC WORKS  
CIVIL ENGINEERING  
701 W. MARKHAM  
LITTLE ROCK, ARKANSAS 72201  


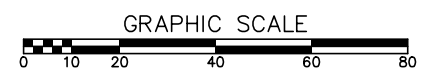
09/13/2024

DRAWN BY  
RFR  
DESIGNED  
RFR  
CHECKED  
BAP  
DATE  
09/13/24  
SCALE  
1" = 40'  
PROJECT NO.  
01-22-ST-99  
SHEET NO.  
**C-05**

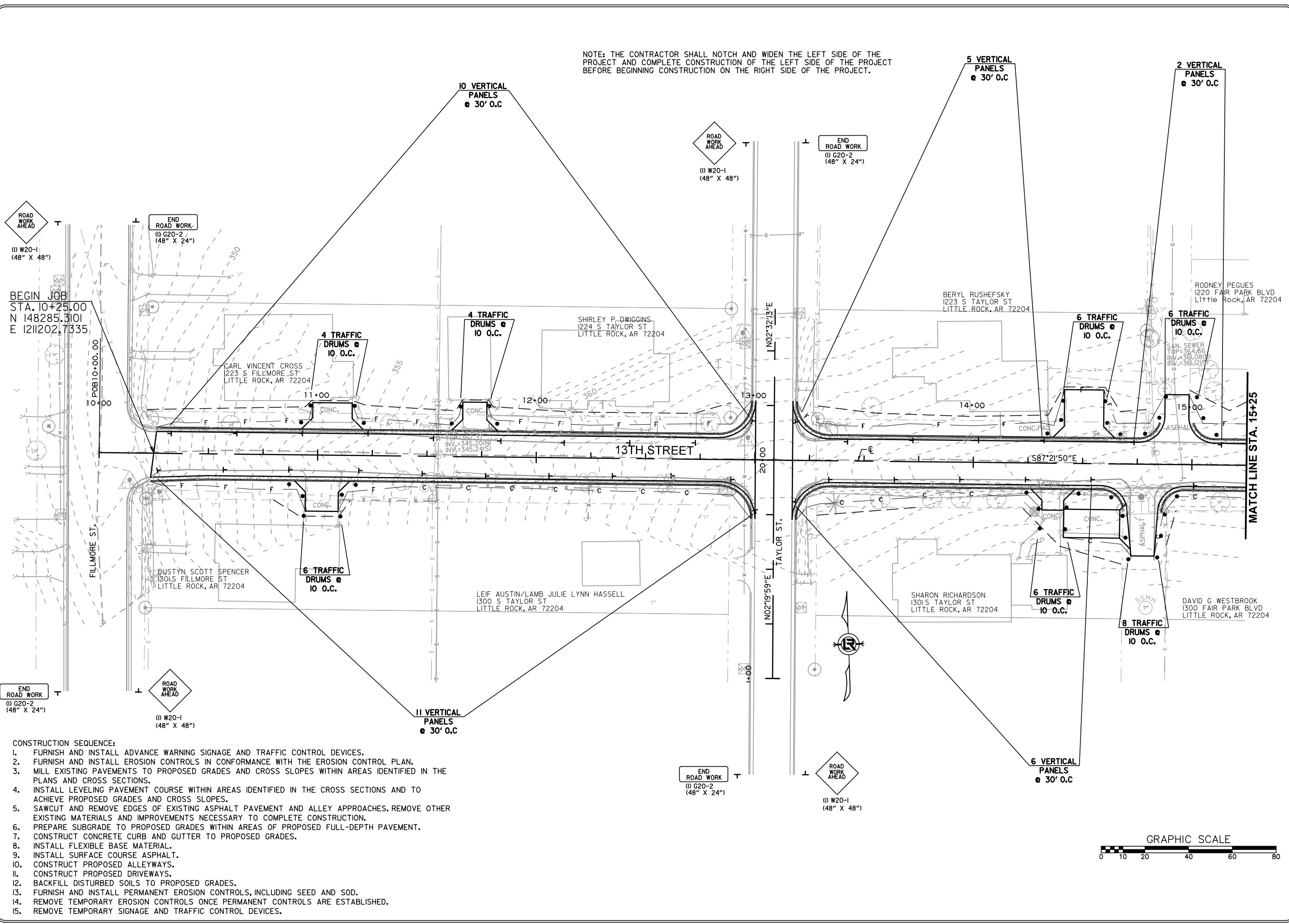


CONSTRUCTION - ENTRANCE/EXIT	(CO)
CHECK DAM	(CD)
DIVERSION BERM	(DI)
DOWNDRAIN STRUCTURE - TEMPORARY	(DN)
ROCK DAM	(RD)
SEDIMENT BARRIER - SILF FENCE	(SD1)
SEDIMENT BARRIER - GRAVEL RING	(SD2)
SEDIMENT BARRIER - BLOCK & GRAVEL	(SD3)
SEDIMENT BARRIER - BLOCK	(SD4)
TEMPORARY SEDIMENT BASIN	(SBI)
SILT FENCE - TYPE A	(SFA)
SILT FENCE - TYPE B	(SFB)
SILT FENCE - TYPE C	(SFC)
STORM DRAIN OUTLET PROTECTION	(ST)
SURFACE ROUGHENING	(SU)
DISTURBED AREA STABILIZATION - TEMPORARY STABILIZATION	(TS1)
DISTURBED AREA STABILIZATION - TEMPORARY GRASSING	(TS2)
DISTURBED AREA STABILIZATION - PERMANENT GRASSING	(TS3)
MATTING/BLANKETS	(Mb)

**PHASING LEGEND**  
① PHASE 1 (INITIAL STRIP AND DEMOLITION)  
② PHASE 2 (BASE COURSE IN PLACE)  
③ PHASE 3 (PAVED, SOLID SODDING NOT YET INSTALLED)



NOTE: THE CONTRACTOR SHALL NOTCH AND WIDEN THE LEFT SIDE OF THE PROJECT AND COMPLETE CONSTRUCTION OF THE LEFT SIDE OF THE PROJECT BEFORE BEGINNING CONSTRUCTION ON THE RIGHT SIDE OF THE PROJECT.



BEGIN JOB  
STA. 10+25.00  
N 148285.3101  
E 1211202.7335

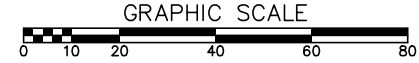
END ROAD WORK  
(1) G20-2  
(48" X 24")

(1) W20-1  
(48" X 48")

END ROAD WORK  
(1) G20-2  
(48" X 24")

(1) W20-1  
(48" X 48")

- CONSTRUCTION SEQUENCE:
1. FURNISH AND INSTALL ADVANCE WARNING SIGNAGE AND TRAFFIC CONTROL DEVICES.
  2. FURNISH AND INSTALL EROSION CONTROLS IN CONFORMANCE WITH THE EROSION CONTROL PLAN.
  3. MILL EXISTING PAVEMENTS TO PROPOSED GRADES AND CROSS SLOPES WITHIN AREAS IDENTIFIED IN THE PLANS AND CROSS SECTIONS.
  4. INSTALL LEVELING PAVEMENT COURSE WITHIN AREAS IDENTIFIED IN THE CROSS SECTIONS AND TO ACHIEVE PROPOSED GRADES AND CROSS SLOPES.
  5. SAWCUT AND REMOVE EDGES OF EXISTING ASPHALT PAVEMENT AND ALLEY APPROACHES. REMOVE OTHER EXISTING MATERIALS AND IMPROVEMENTS NECESSARY TO COMPLETE CONSTRUCTION.
  6. PREPARE SUBGRADE TO PROPOSED GRADES WITHIN AREAS OF PROPOSED FULL-DEPTH PAVEMENT.
  7. CONSTRUCT CONCRETE CURB AND GUTTER TO PROPOSED GRADES.
  8. INSTALL FLEXIBLE BASE MATERIAL.
  9. INSTALL SURFACE COURSE ASPHALT.
  10. CONSTRUCT PROPOSED ALLEYWAYS.
  11. CONSTRUCT PROPOSED DRIVEWAYS.
  12. BACKFILL DISTURBED SOILS TO PROPOSED GRADES.
  13. FURNISH AND INSTALL PERMANENT EROSION CONTROLS, INCLUDING SEED AND SOD.
  14. REMOVE TEMPORARY EROSION CONTROLS ONCE PERMANENT CONTROLS ARE ESTABLISHED.
  15. REMOVE TEMPORARY SIGNAGE AND TRAFFIC CONTROL DEVICES.



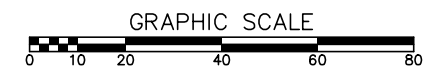
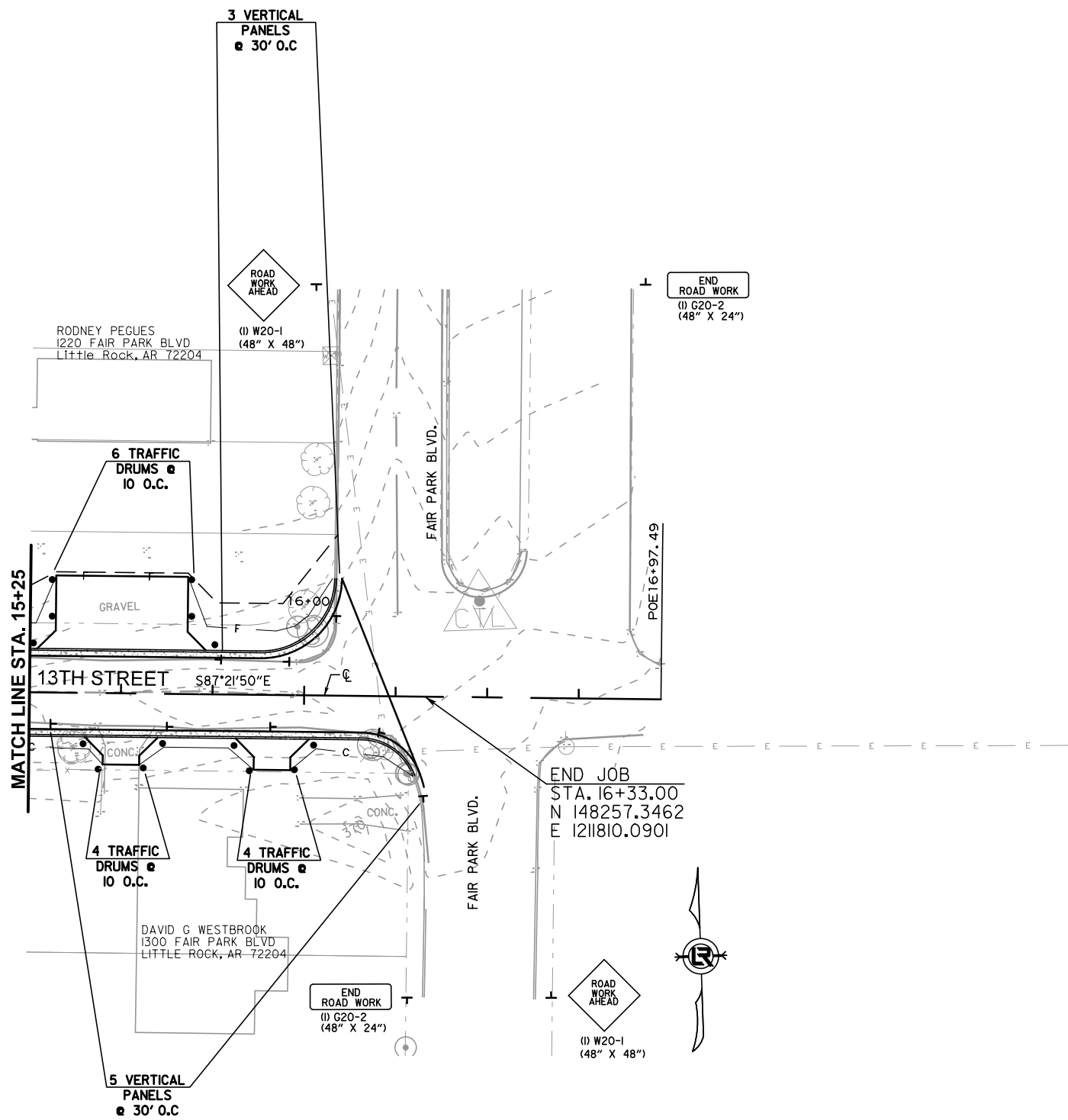
REVISIONS DATE

CITY OF LITTLE ROCK, ARKANSAS  
W. 13TH STREET FROM FAIR PARK TO FILLMORE  
MAINTENANCE OF TRAFFIC PLAN  
13TH STREET SHEET 1

DEPARTMENT OF PUBLIC WORKS  
CIVIL ENGINEERING  
701 W. MARKHAM  
LITTLE ROCK, ARKANSAS 72201

09/13/2024

DRAWN BY  
RFR  
DESIGNED  
RFR  
CHECKED  
BAP  
DATE  
09/13/24  
SCALE  
1" = 40'  
PROJECT NO.  
01-22-ST-99  
SHEET NO.  
C-06



REVISIONS DATE

CITY OF LITTLE ROCK, ARKANSAS  
W. 13TH STREET FROM FAIR PARK TO FILLMORE  
MAINTENANCE OF TRAFFIC PLAN  
13TH STREET SHEET 2



DEPARTMENT OF PUBLIC WORKS  
CIVIL ENGINEERING  
701 W. MARKHAM  
LITTLE ROCK, ARKANSAS 72201



09/13/2024

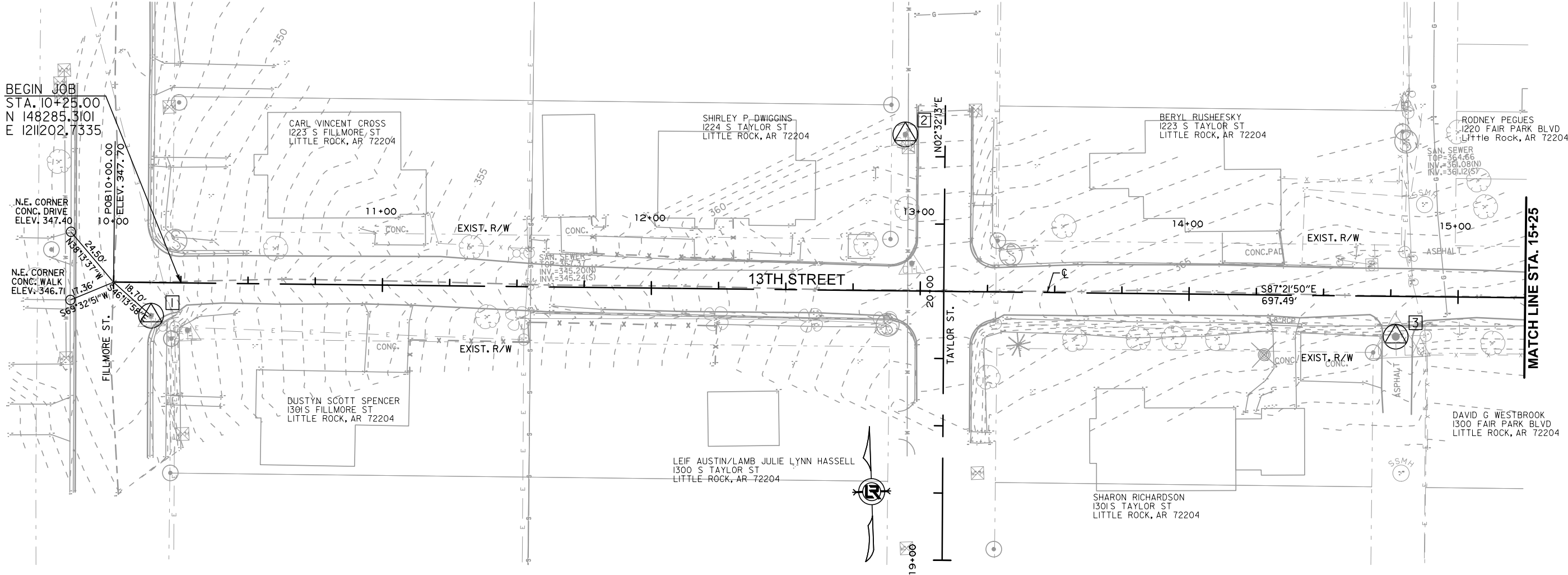
DRAWN BY  
RFR  
DESIGNED  
RFR  
CHECKED  
BAP  
DATE  
09/13/24  
SCALE  
1" = 40'  
PROJECT NO.  
01-22-ST-99  
SHEET NO.  
C-07

CITY OF LITTLE ROCK, ARKANSAS  
 W. 13TH STREET FROM FAIR PARK TO FILLMORE  
 FIELD TIES / LAYOUT SHEET  
 13TH STREET SHEET 1

DEPARTMENT OF PUBLIC WORKS  
 CIVIL ENGINEERING  
 701 W. MARKHAM  
 LITTLE ROCK, ARKANSAS 72201

09/13/2024

DRAWN BY  
 RFR  
 DESIGNED  
 RFR  
 CHECKED  
 BAP  
 DATE  
 09/13/24  
 SCALE  
 1" = 40'  
 PROJECT NO.  
 01-22-ST-99  
 SHEET NO.  
**C-08**



BEGIN JOB  
 STA. 10+25.00  
 N 148285.3101  
 E 1211202.7335

N.E. CORNER  
 CONC. DRIVE  
 ELEV. 347.40

N.E. CORNER  
 CONC. WALK  
 ELEV. 346.71

MATCH LINE STA. 15+25

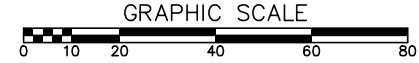
**C.L. 13TH ST. COORDINATES**

STATION	TYPE	NORTHING	EASTING
10+00.00	P.O.B.	148286.4600	1211177.7600
16+97.49	P.O.E.	148254.3801	1211874.5111

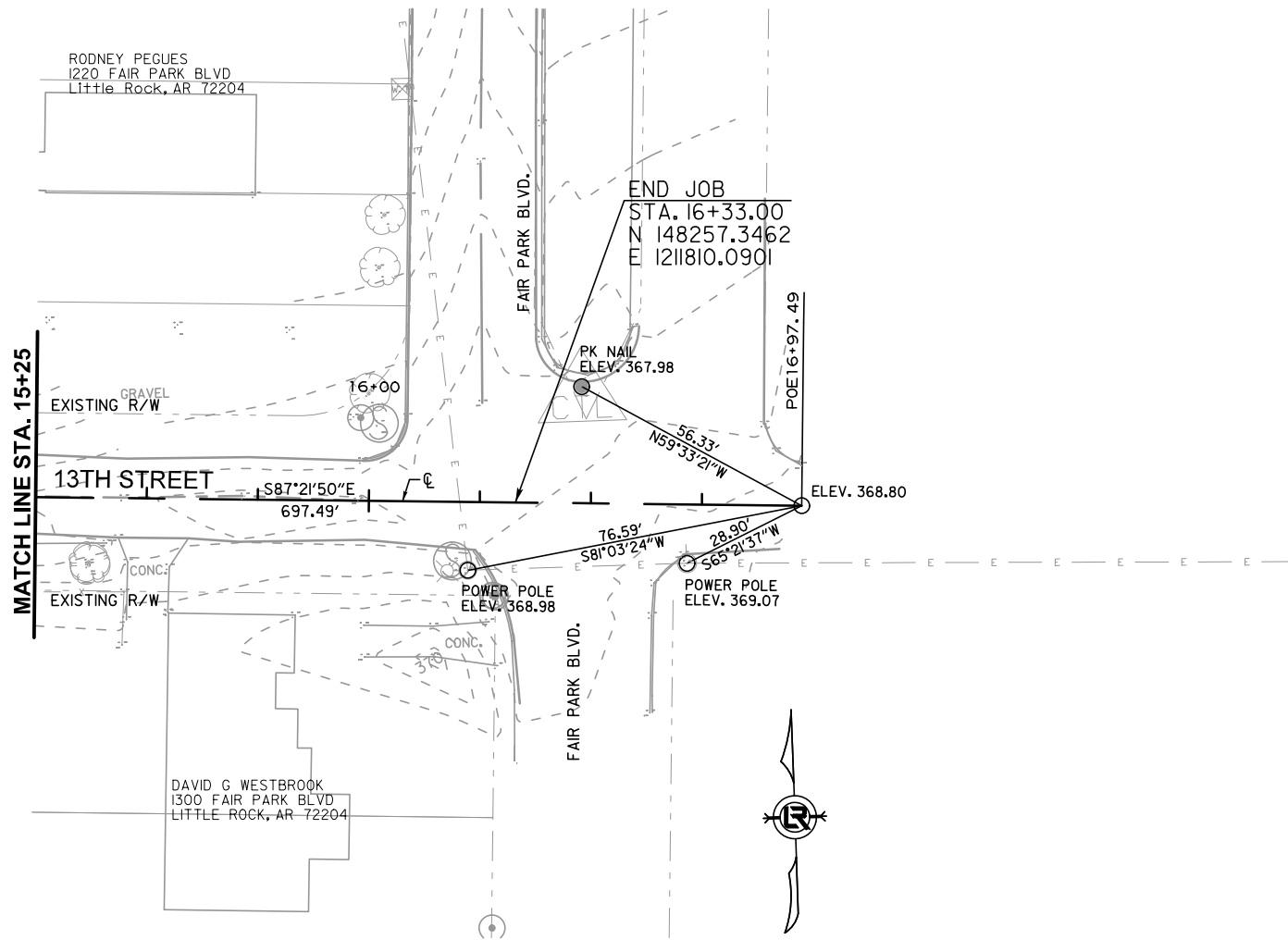
**SURVEY BENCHMARKS**

NO.	DESCRIPTION	NORTHING	EASTING	ELEVATION
1	PK NAIL	148273.5220	1211191.2670	347.460
2	60D NAIL	148331.0850	1211473.9510	360.160
3	PK NAIL	148249.5660	1211653.5620	367.700

- CONTROL POINT
- REFERENCE POINT



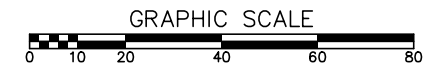




C.L. 13TH ST. COORDINATES			
STATION	TYPE	NORTHING	EASTING
10+00.00	P.O.B.	148286.4600	1211177.7600
16+97.49	P.O.E.	148254.3801	1211874.5111

SURVEY BENCHMARKS				
NO.	DESCRIPTION	NORTHING	EASTING	ELEVATION
1	PK NAIL	148273.5220	1211191.2670	347.460
2	60D NAIL	148331.0850	1211473.9510	360.160
3	PK NAIL	148249.5660	1211653.5620	367.700

- CONTROL POINT
- REFERENCE POINT



REVISIONS    DATE

CITY OF LITTLE ROCK, ARKANSAS  
W. 13TH STREET FROM FAIR PARK TO FILLMORE  
FIELD TIES / LAYOUT SHEET  
13TH STREET SHEET 2

DEPARTMENT OF PUBLIC WORKS  
CIVIL ENGINEERING  
701 W. MARKHAM  
LITTLE ROCK, ARKANSAS 72201

09/13/2024

DRAWN BY  
RFR  
DESIGNED  
RFR  
CHECKED  
BAP  
DATE  
09/13/24  
SCALE  
1" = 40'  
PROJECT NO.  
01-22-ST-99  
SHEET NO.  
C-09

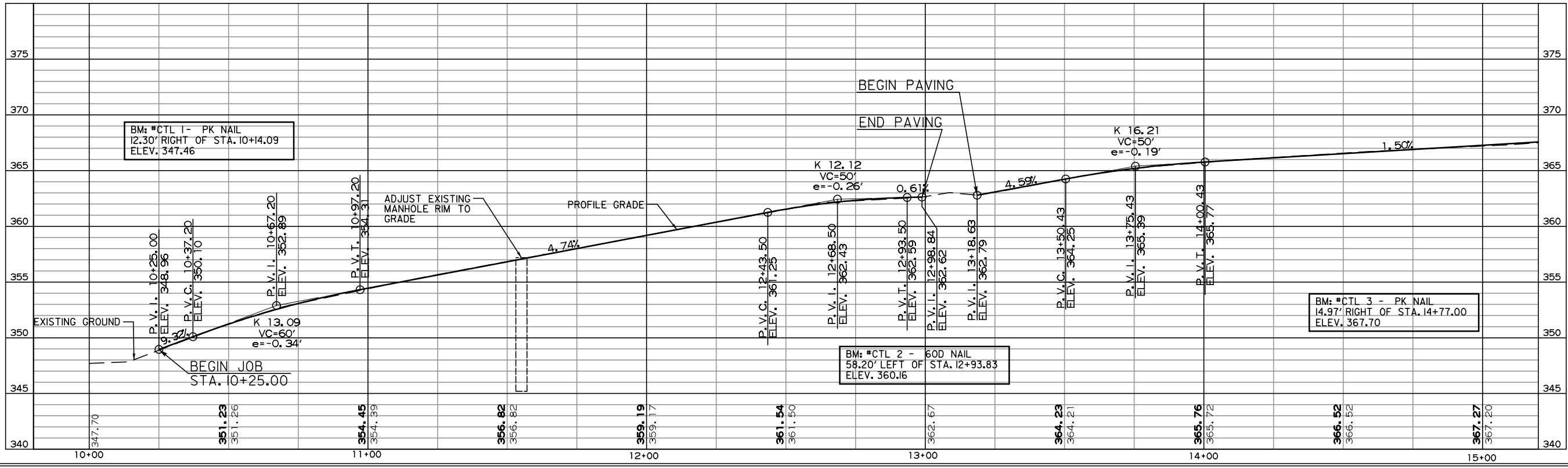
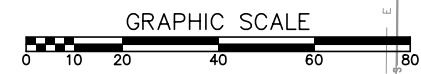
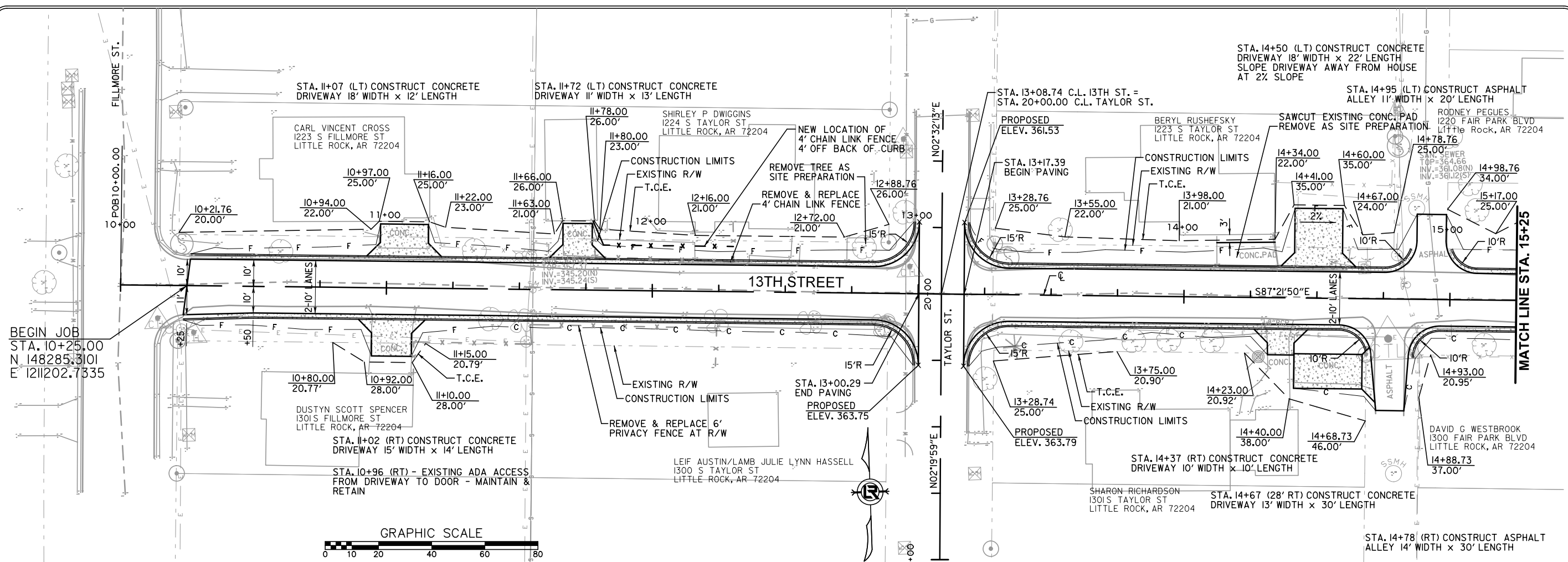
REVISIONS	DATE

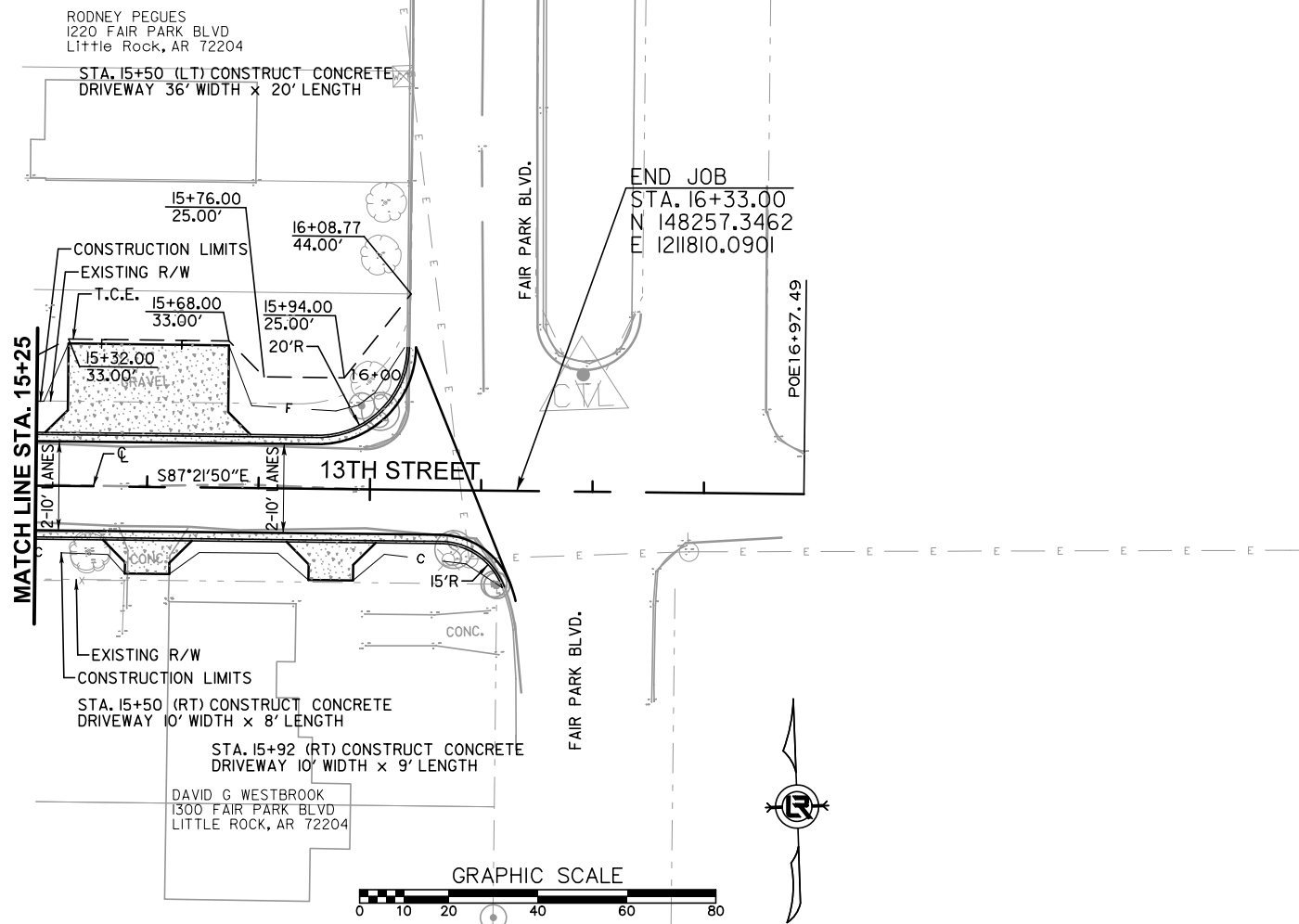
**CITY OF LITTLE ROCK, ARKANSAS**  
**W. 13TH STREET FROM FAIR PARK TO FILLMORE**  
**PLAN & PROFILE**  
**13TH STREET SHEET 1**

**DEPARTMENT OF PUBLIC WORKS**  
**CIVIL ENGINEERING**  
**701 W. MARKHAM**  
**LITTLE ROCK, ARKANSAS 72201**

09/13/2024

**DRAWN BY**  
RFR  
**DESIGNED**  
RFR  
**CHECKED**  
BAP  
**DATE**  
09/13/24  
**SCALE**  
1" = 40'  
**PROJECT NO.**  
01-22-ST-99  
**SHEET NO.**  
**C-10**





REVISIONS DATE

CITY OF LITTLE ROCK, ARKANSAS  
 W. 13TH STREET FROM FAIR PARK TO FILLMORE  
 PLAN & PROFILE  
 13TH STREET SHEET 2

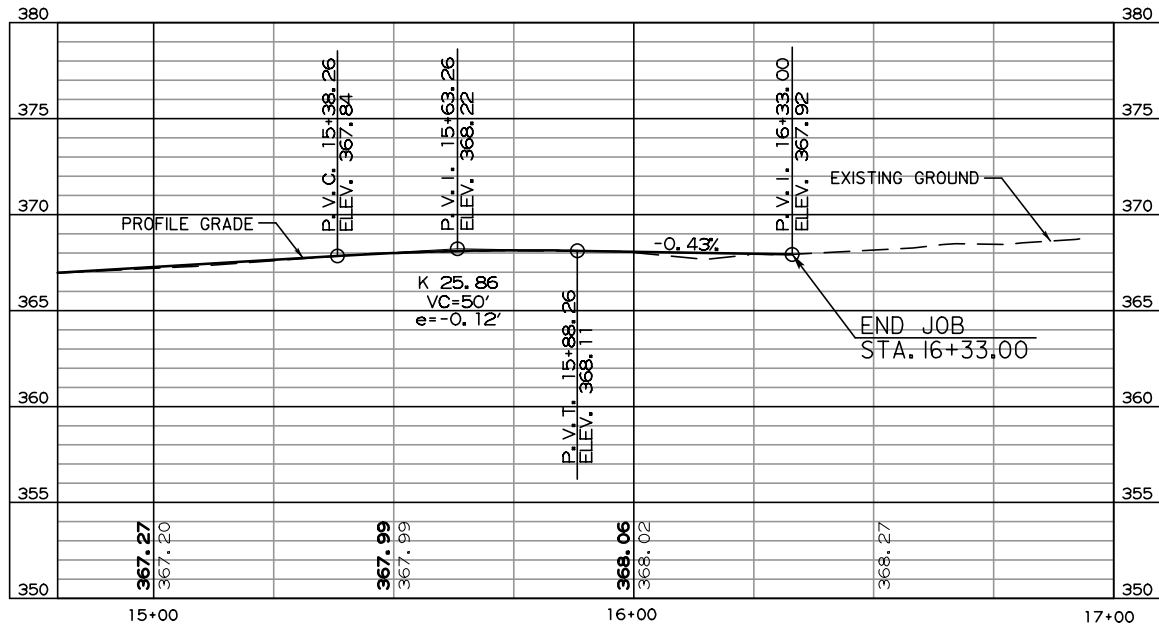


DEPARTMENT OF PUBLIC WORKS  
 CIVIL ENGINEERING  
 701 W. MARKHAM  
 LITTLE ROCK, ARKANSAS 72201




09/13/2024

DRAWN BY  
 RFR  
 DESIGNED  
 RFR  
 CHECKED  
 BAP  
 DATE  
 09/13/24  
 SCALE  
 1" = 40'  
 PROJECT NO.  
 01-22-ST-99  
 SHEET NO.  
**C-11**



REVISIONS	DATE

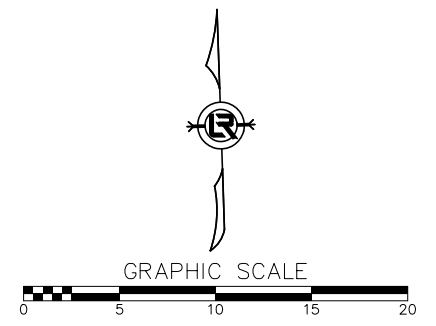
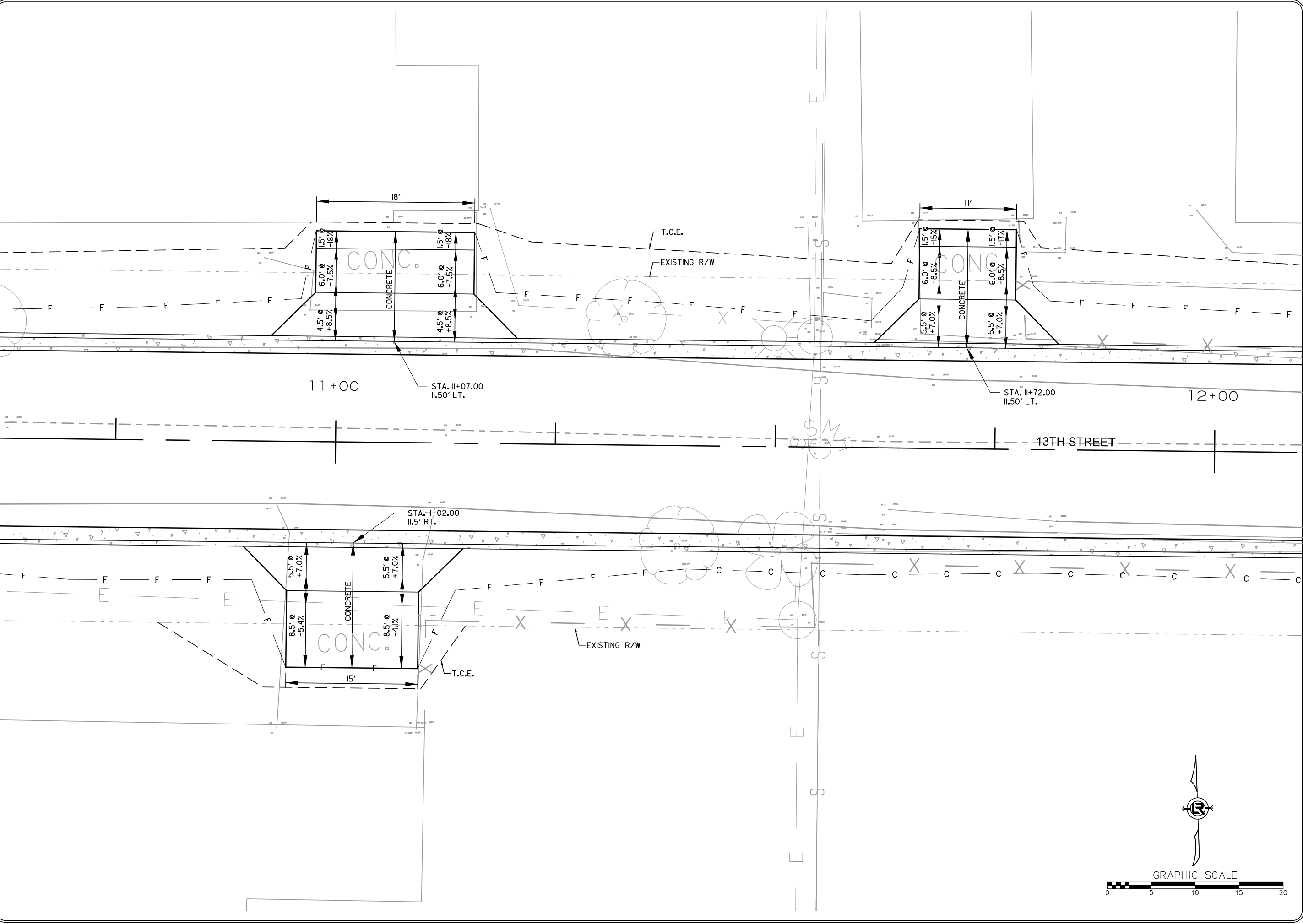
CITY OF LITTLE ROCK, ARKANSAS  
W. 13TH STREET FROM FAIR PARK TO FILLMORE  
DRIVEWAY DETAIL SHEET



DEPARTMENT OF PUBLIC WORKS  
CIVIL ENGINEERING  
701 W. MARKHAM  
LITTLE ROCK, ARKANSAS 72201

09/13/2024

DRAWN BY  
RFR  
DESIGNED  
RFR  
CHECKED  
BAP  
DATE  
09/13/24  
SCALE  
1" = 10'  
PROJECT NO.  
01-22-ST-99  
SHEET NO.  
**C-12**



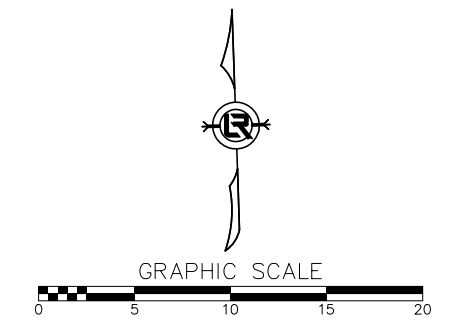
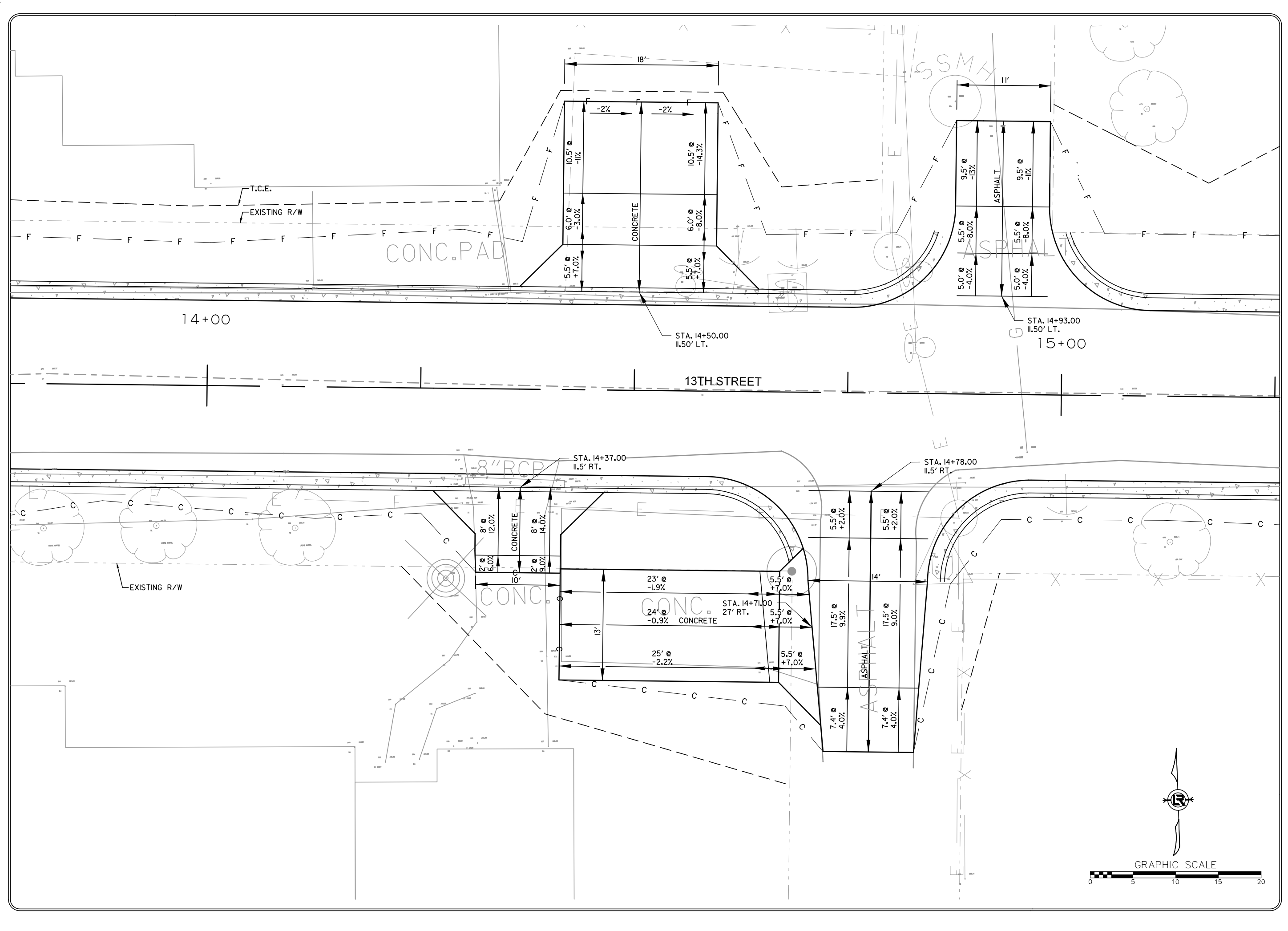
REVISIONS	DATE

CITY OF LITTLE ROCK, ARKANSAS  
W. 13TH STREET FROM FAIR PARK TO FILLMORE  
DRIVEWAY DETAIL SHEET

DEPARTMENT OF PUBLIC WORKS  
CIVIL ENGINEERING  
701 W. MARKHAM  
LITTLE ROCK, ARKANSAS 72201

09/13/2024

DRAWN BY  
RFR  
DESIGNED  
RFR  
CHECKED  
BAP  
DATE  
09/13/24  
SCALE  
1" = 10'  
PROJECT NO.  
01-22-ST-99  
SHEET NO.  
C-13






CITY OF LITTLE ROCK, ARKANSAS  
 W. 13TH STREET FROM FAIR PARK TO FILLMORE

DRIVEWAY DETAIL SHEET



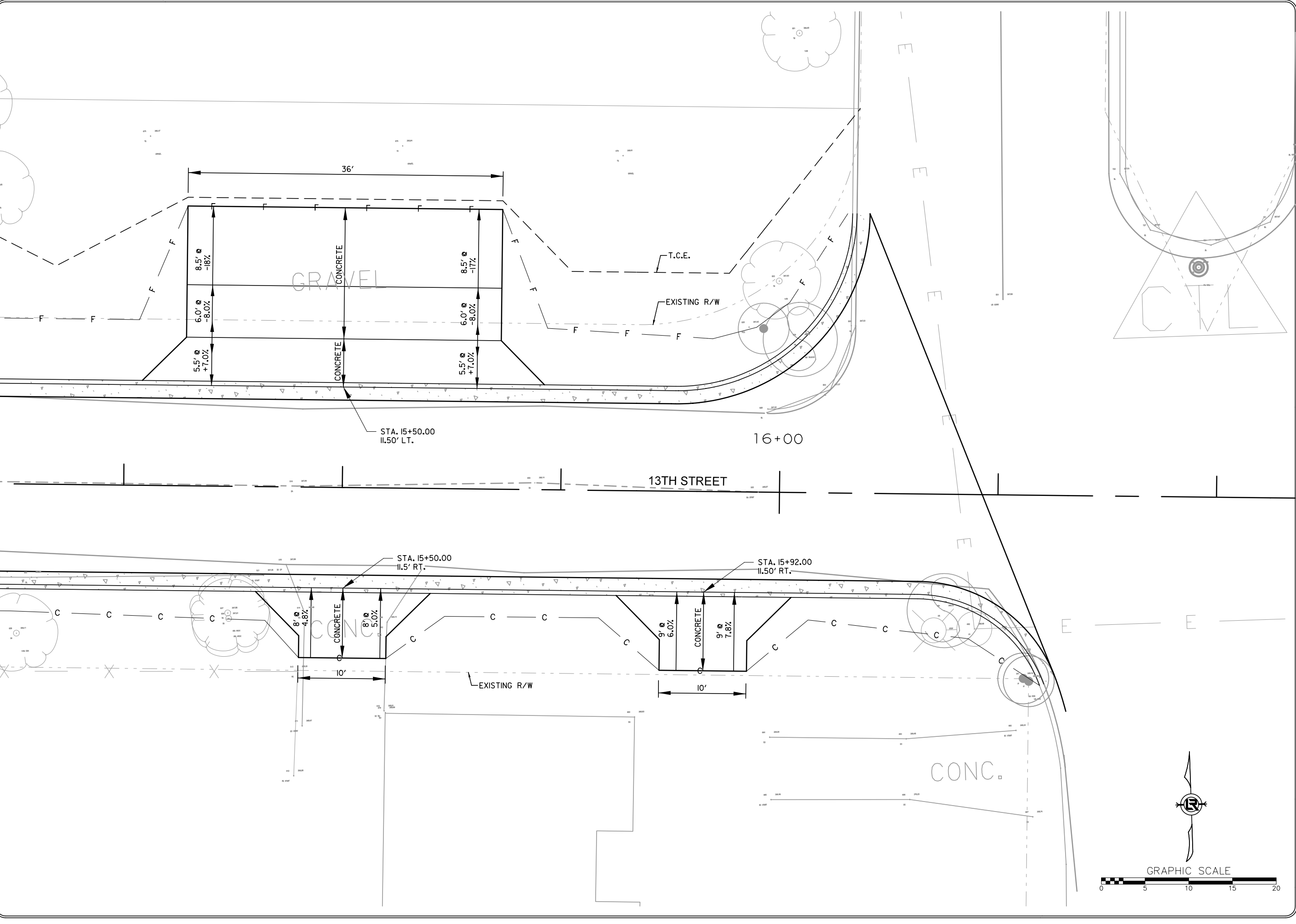
DEPARTMENT OF PUBLIC WORKS  
 CIVIL ENGINEERING  
 701 W. MARKHAM  
 LITTLE ROCK, ARKANSAS 72201



09/13/2024

DRAWN BY  
 RFR  
 DESIGNED  
 RFR  
 CHECKED  
 BAP  
 DATE  
 09/13/24  
 SCALE  
 1" = 10'  
 PROJECT NO.  
 01-22-ST-99  
 SHEET NO.


C-14



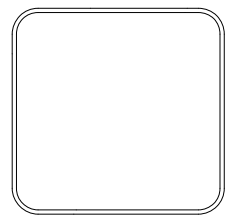
9/13/2024 6:09:46 PM ...\\13th\_Street-Cross\_Sections.dgn T:\Job\CLR - 13th Street D3798900\700 CADD Files\770 Roadway Files\References\13th\_Street-Cross\_Sections.dgn

REVISIONS	DATE

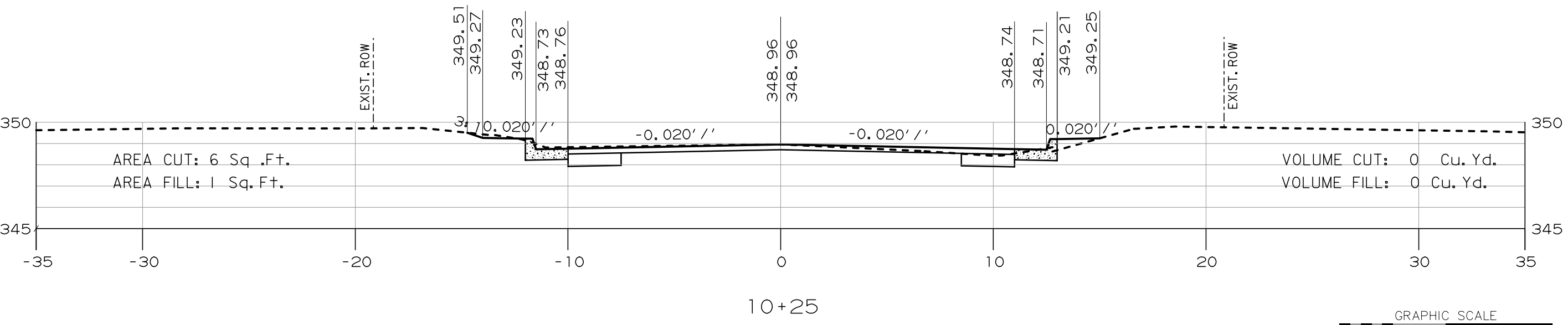
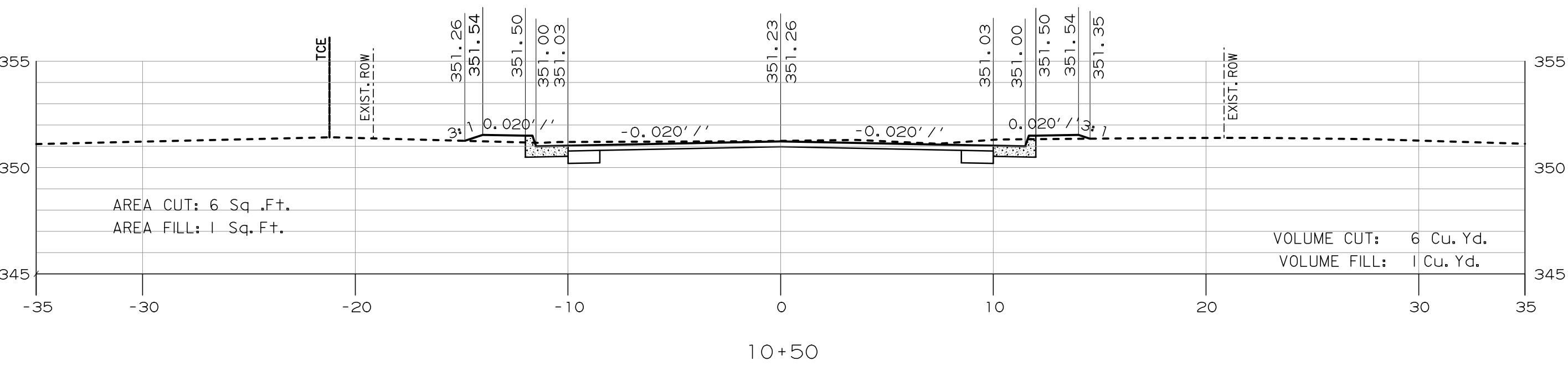
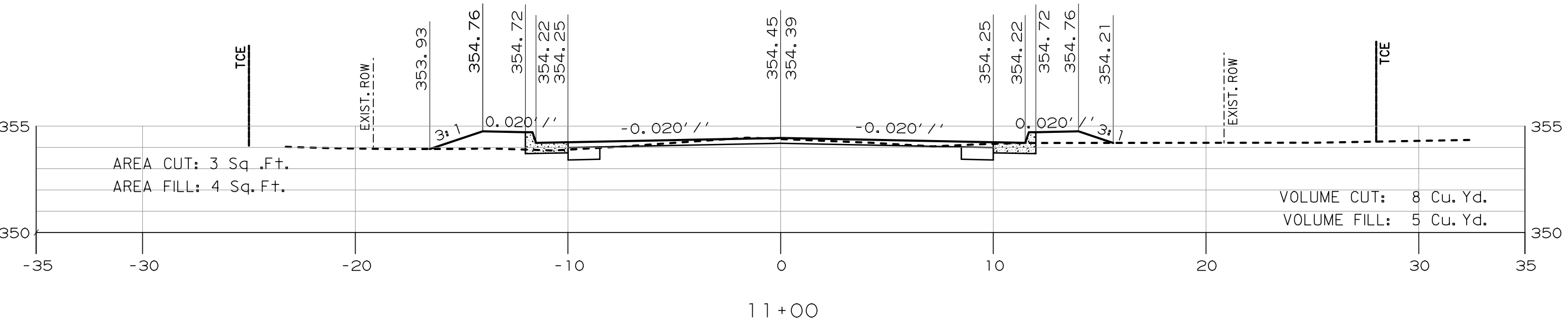
CITY OF LITTLE ROCK, ARKANSAS  
 W. 13TH STREET FROM FAIR PARK TO FILLMORE  
 CROSS SECTIONS



DEPARTMENT OF PUBLIC WORKS  
 CIVIL ENGINEERING  
 701 W. MARKHAM  
 LITTLE ROCK, ARKANSAS 72201



DRAWN BY RFR
DESIGNED RFR
CHECKED BAP
DATE 09/13/24
SCALE
PROJECT NO. 01-22-ST-99
SHEET NO. <b>C-15</b>





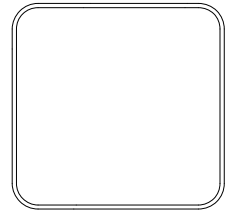


T:\Job\CLR - 13th Street - D3798900\700 CADD Files\770 Roadway Files\References\13th\_Street-Cross-Sections.dgn  
 T:\Job\CLR - 13th Street - D3798900\700 CADD Files\770 Roadway Files\References\13th\_Street-Cross-Sections.dgn  
 9/13/2024 6:04:48 PM

REVISIONS	DATE

CITY OF LITTLE ROCK, ARKANSAS  
 W. 13TH STREET FROM FAIR PARK TO FILLMORE  
 CROSS SECTIONS

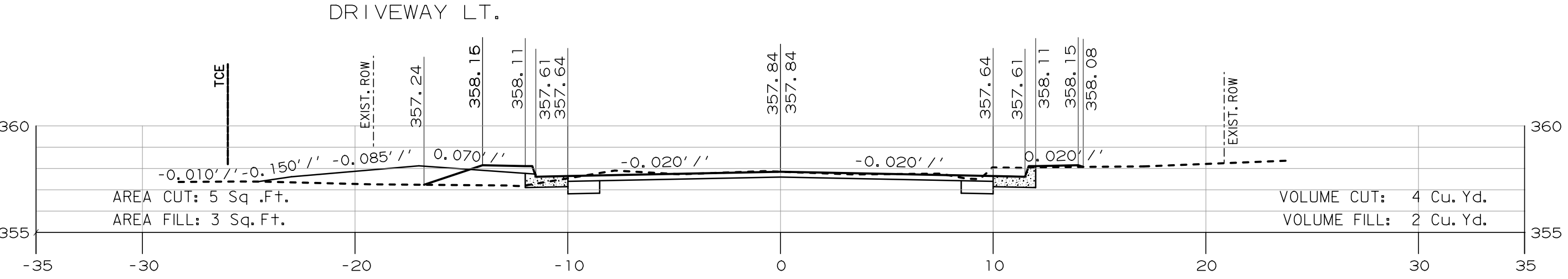
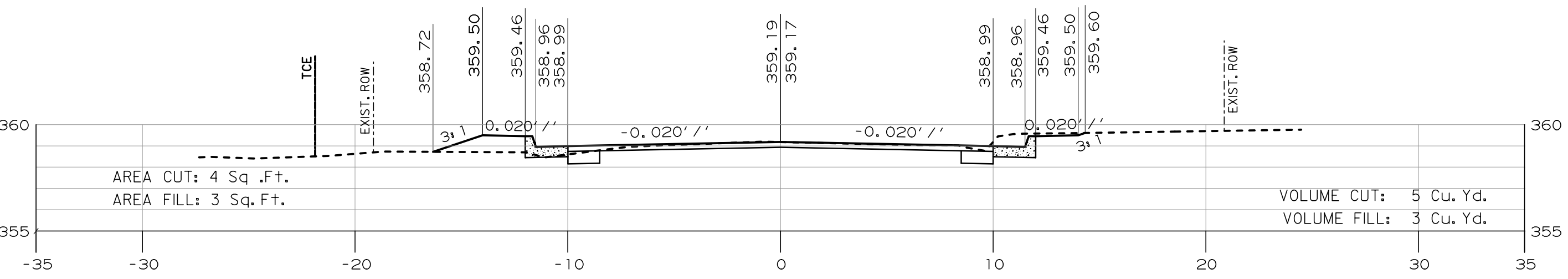
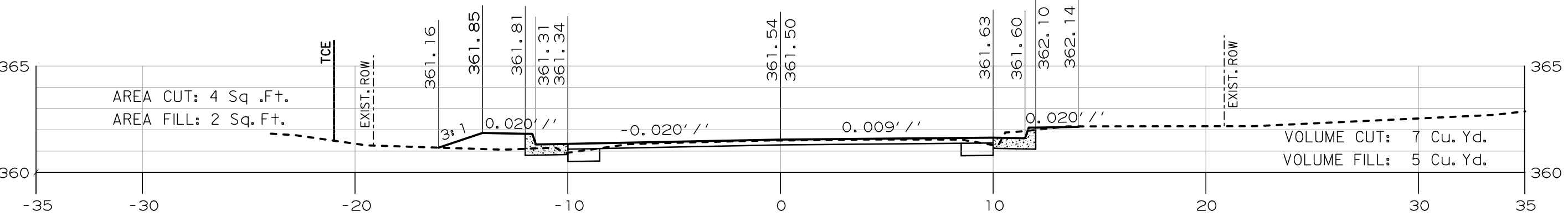
DEPARTMENT OF PUBLIC WORKS  
 CIVIL ENGINEERING  
 701 W. MARKHAM  
 LITTLE ROCK, ARKANSAS 72201

DRAWN BY  
 RFR  
 DESIGNED  
 RFR  
 CHECKED  
 BAP  
 DATE  
 09/13/24  
 SCALE

PROJECT NO.  
 01-22-ST-99



SHEET NO.  
**C-17**

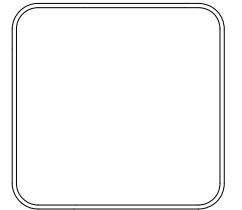


T:\Job\CLR - 13th Street D3798900.700 CADD Files\170 Roadway Files\References\13th\_Street-Cross\_Sections.dgn  
 ..\13th\_Street-Cross\_Sections.dgn  
 6:11:17 PM  
 9/13/2024

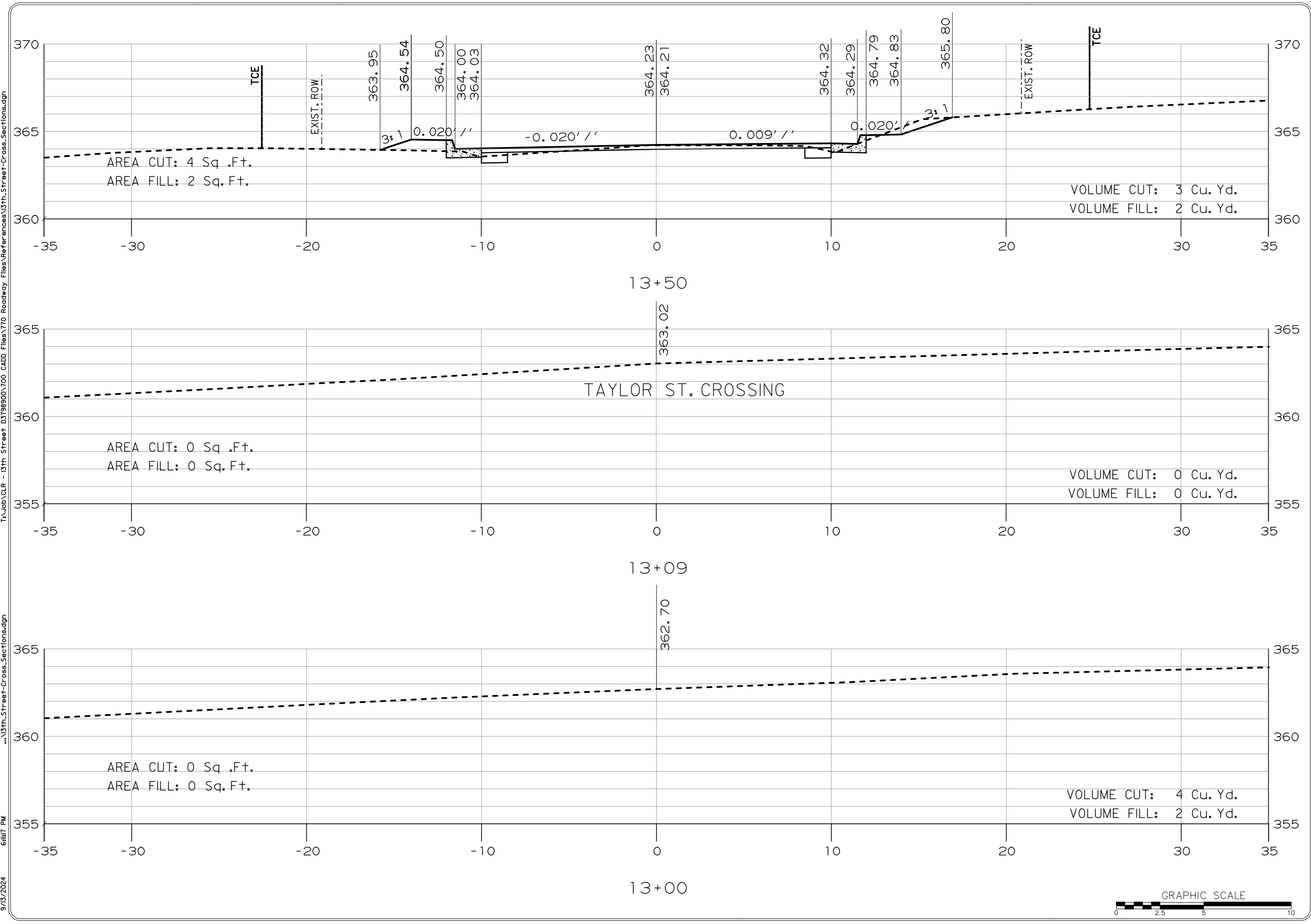
REVISIONS	DATE

**CITY OF LITTLE ROCK, ARKANSAS**  
**W. 13TH STREET FROM FAIR PARK TO FILLMORE**  
**CROSS SECTIONS**

  
 DEPARTMENT OF PUBLIC WORKS  
 CIVIL ENGINEERING  
 701 W. MARKHAM  
 LITTLE ROCK, ARKANSAS 72201  




<b>DRAWN BY</b> RFR
<b>DESIGNED</b> RFR
<b>CHECKED</b> BAP
<b>DATE</b> 09/13/24
<b>SCALE</b>
<b>PROJECT NO.</b> 01-22-ST-99
<b>SHEET NO.</b> <b>C-18</b>







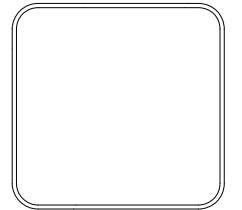
T:\Job\CLR - 13th Street - D3798900\700 CADD Files\770 Roadway Files\References\13th\_Street-Cross\_Sections.dgn  
 ..\13th\_Street-Cross\_Sections.dgn  
 9/13/2024 6:11:53 PM

REVISIONS	DATE

CITY OF LITTLE ROCK, ARKANSAS  
 W. 13TH STREET FROM FAIR PARK TO FILLMORE  
 CROSS SECTIONS



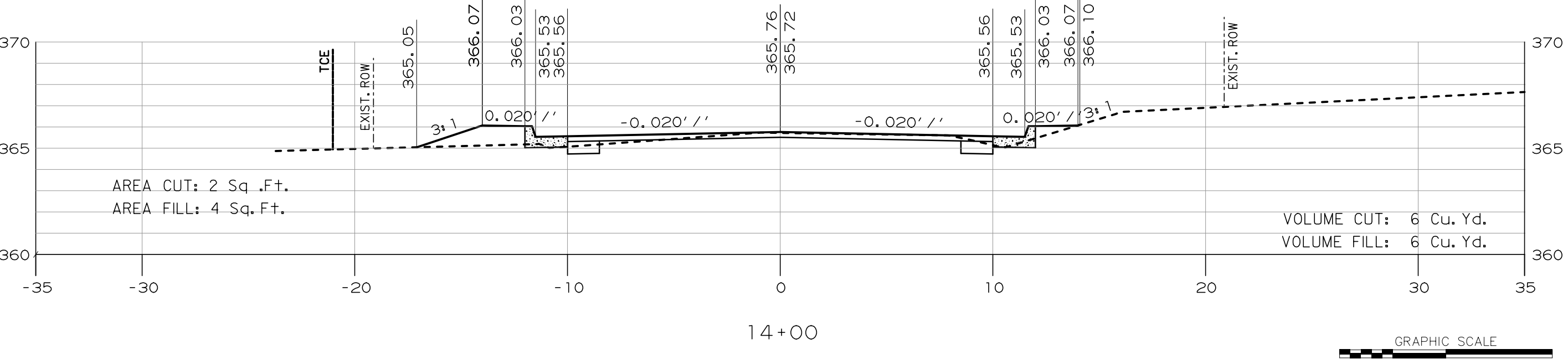
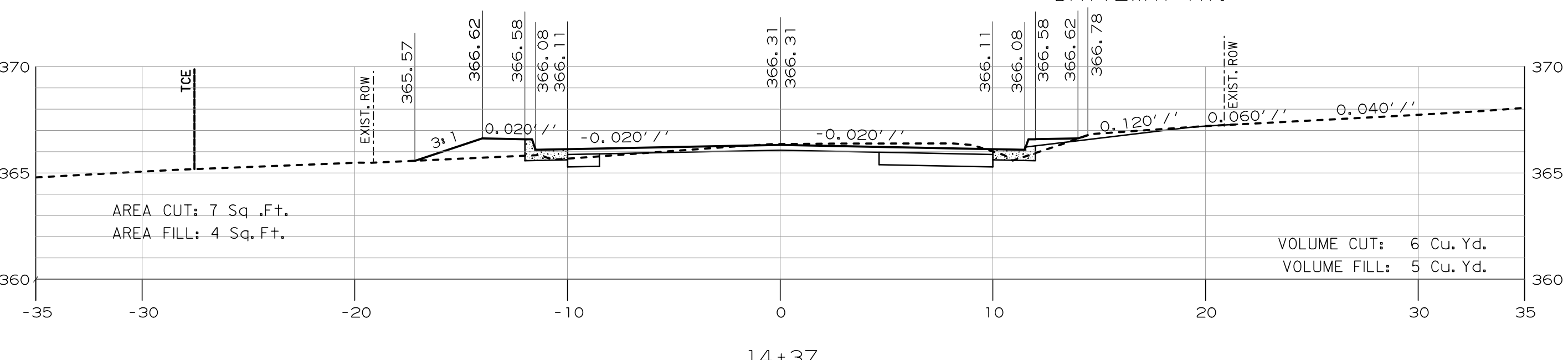
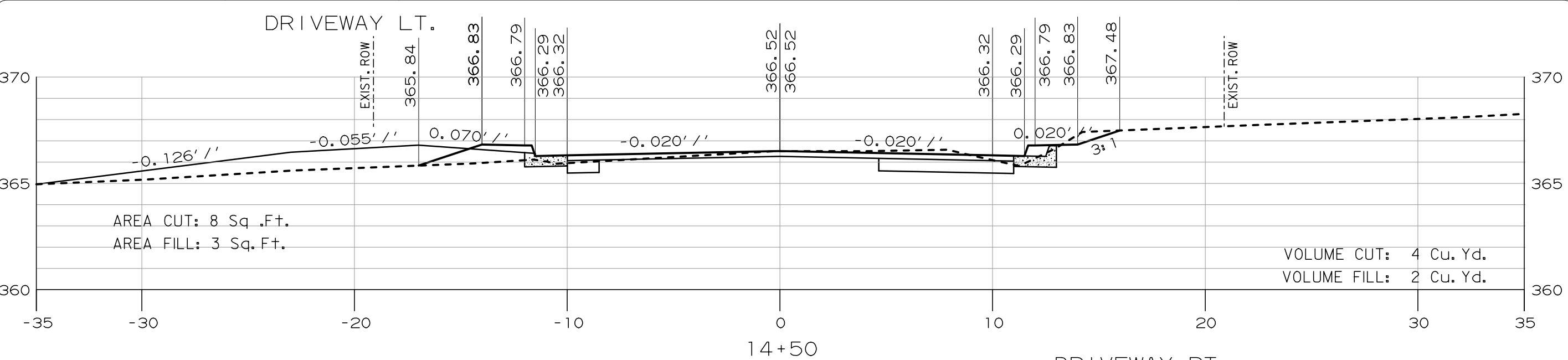
DEPARTMENT OF PUBLIC WORKS  
 CIVIL ENGINEERING  
 701 W. MARKHAM  
 LITTLE ROCK, ARKANSAS 72201

DRAWN BY  
 RFR  
 DESIGNED  
 RFR  
 CHECKED  
 BAP  
 DATE  
 09/13/24  
 SCALE

PROJECT NO.  
 01-22-ST-99


SHEET NO.  
**C-19**




T:\Job\CLR - 13th Street - D3798900\700 CADD Files\770 Roadway Files\References\13th\_Street-Cross-Sections.dgn  
 ..\13th\_Street-Cross-Sections.dgn  
 9/13/2024 6:42:27 PM

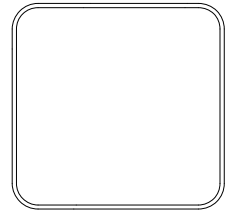
REVISIONS	DATE

**CITY OF LITTLE ROCK, ARKANSAS**  
**W. 13TH STREET FROM FAIR PARK TO FILLMORE**  
**CROSS SECTIONS**



DEPARTMENT OF PUBLIC WORKS  
 CIVIL ENGINEERING  
 701 W. MARKHAM  
 LITTLE ROCK, ARKANSAS 72201





**DRAWN BY**  
 RFR  
**DESIGNED**  
 RFR  
**CHECKED**  
 BAP  
**DATE**  
 09/13/24  
**SCALE**

**PROJECT NO.**  
 01-22-ST-99  
**SHEET NO.**  
**C-20**

