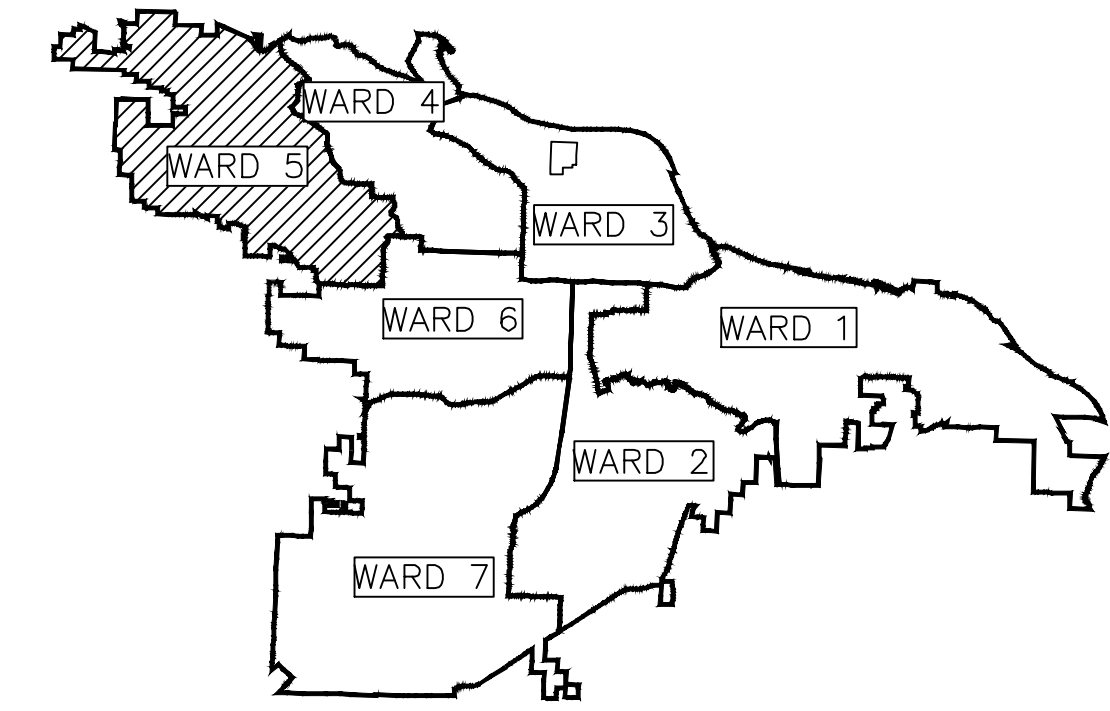


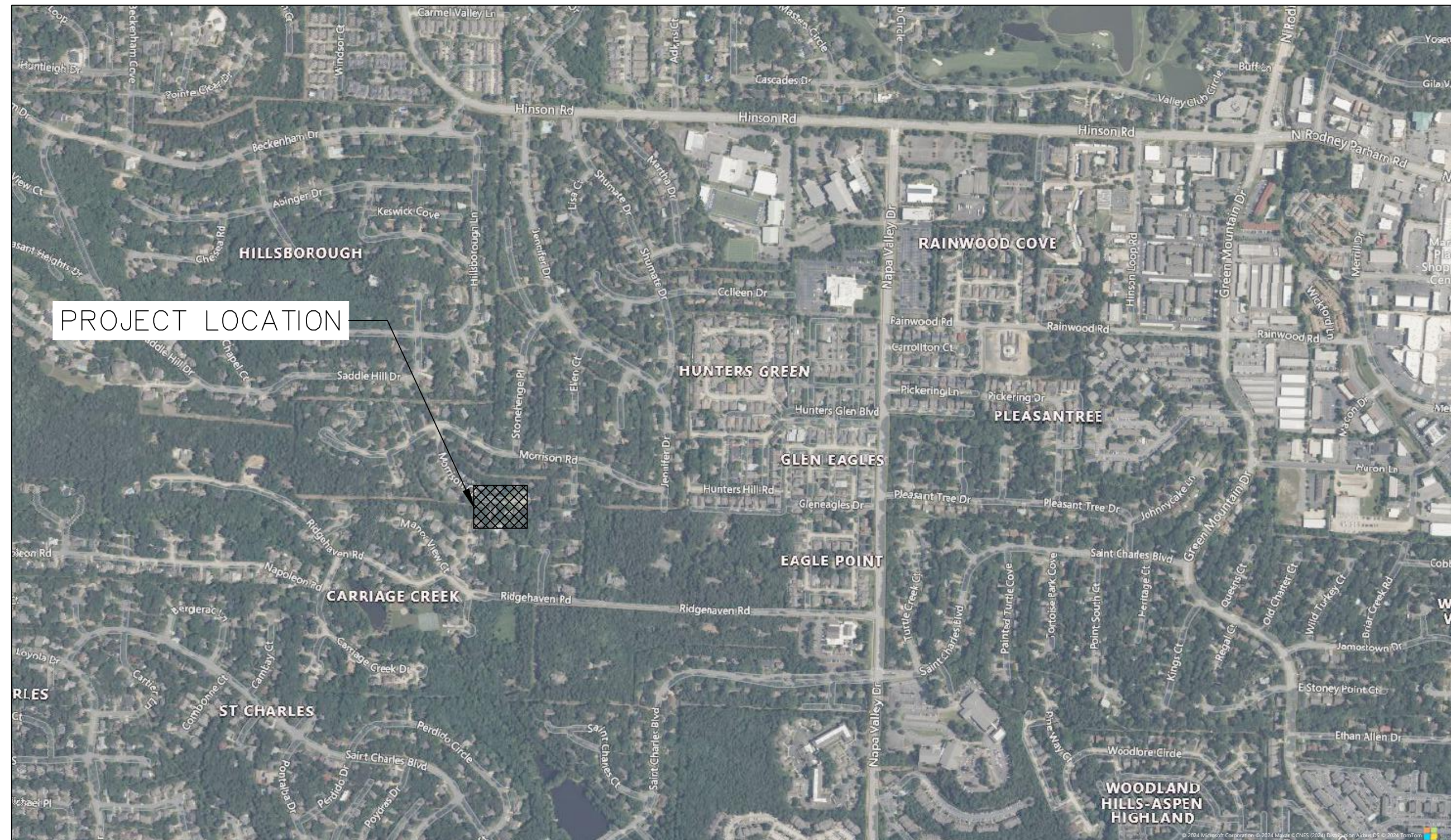
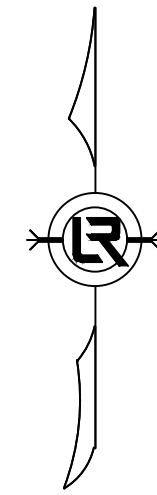
CLR PROJECT 05-17-DR-208A

MORRISON COURT DRAINAGE

LITTLE ROCK, ARKANSAS



PROJECT LOCATION – WARD 5



90% LEVEL

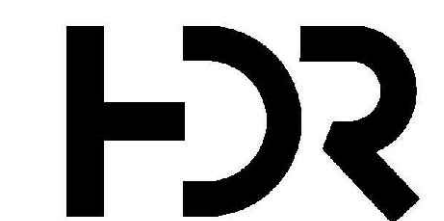


2023-2025 BOND PROGRAM

DEPARTMENT OF PUBLIC WORKS
CIVIL ENGINEERING
701 WEST MARKHAM STREET
LITTLE ROCK, ARKANSAS 72201

TABLE OF CONTENTS

SHEET NO.	TITLE
C1	COVER SHEET
C2	GENERAL NOTES, LEGEND AND QUANTITIES
C3	EXISTING LAYOUT
C4	PROPOSED LAYOUT
C5	PLAN & PROFILE
C6	CROSS SECTIONS
C7	EROSION CONTROL PH 1
C8	EROSION CONTROL PH 2

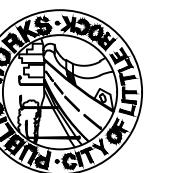


10825 FINANCIAL CENTRE PKWY
SUITE 212
LITTLE ROCK, AR 72211
501-435-3700

REVISIONS DATE

CITY OF LITTLE ROCK, ARKANSAS
MORRISON COURT DRAINAGE

COVER SHEET
90%



DEPARTMENT OF PUBLIC WORKS
CIVIL ENGINEERING
701 W. MARKHAM
LITTLE ROCK, ARKANSAS 72201



DRAWN BY
VSE
DESIGNED
VSE
CHECKED
JPC
DATE
8/15/2024
SCALE
NTS
PROJECT NO.
05-17-DR-208A
SHEET NO.

C1

CLR PROJECT 05-17-DR-208A			
MORRISON COURT DRAINAGE			
15-Aug-24			
ITEM #	ITEM DESCRIPTION	UNIT	QUANTITY
2.01	SITE PREPARATION (INCL. MOBILIZATION)	LS	1
3.01	UNCLASSIFIED EXCAVATION	CY	20
3.07	COMPACTED EMBACKMENT	CY	5
4.01	CLASS 7 AGGREGATE BASE	TON	25
14.01	SOLID SODDING, MATCH EXISTING	SY	252
19.10	FINAL CLEANUP	LS	1
24.11	SILT FENCE - TYPE A (SFA)	LF	170
31.00	CONCRETE DITCH PAVING	SY	32.00

GENERAL NOTES:

1. ANY DEMOLITION OR REMOVAL ITEMS TO BE PAID FOR UNDER "SITE PREPARATION".
2. COST OF CONSTRUCTION ENTRANCE TO WORK SITE AND ANY REMOVAL AND REPAIR OF ENTRANCE TO PREVIOUS CONDITION TO BE PAID FOR UNDER "SITE PREPARATION".

EXISTING

IRON ROD	○ IR
PK NAIL	○ PK
R.R. SPIKE	○ RR(Sp)
CONC. MONUMENT	□ CM
WATER VALVE	⊗ WV
WATER METER	⊗ WM
FIRE HYDRANT	⊗ FH
GAS METER	⊗ GM
GAS VALVE	⊗ GV
CLEAN-OUT	○ CO
GUARD POST (BOLLARD)	● GP
SIGN POST	⊕
BENCHMARK	⊕
STORM SEWER MANHOLE	⊙
SANITARY SEWER MANHOLE	⊙
TELEPHONE MANHOLE	⊙
ELECTRIC MANHOLE	⊙
TELEPHONE BOX	⊞
ELECTRIC BOX	⊞
CABLE BOX	⊞
UTILITY POLE	⊞
GUY WIRE	⊞
LIGHT POLE	⊞
POST OR POLE (TYPE AS NOTED)	⊞
MAILBOX	⊞
DECIDUOUS TREE	⊞
EVERGREEN/CONIFEROUS TREE	⊞
BUSH	⊞
PROPERTY LINE	— — — — —
SETBACK LINE	— — — — —
EASEMENT LINE	— — — — —
CURB	— — — — —
FENCE	— X — X — X —
OVERHEAD ELECTRIC	— OE — OE —
OVERHEAD TELEPHONE	— OT — OT —
OVERHEAD CABLE	— OC — OC —
UNDERGROUND TELEPHONE	— UGT —
UNDERGROUND ELECTRIC	— UGE —
UNDERGROUND CABLE	— UGC —
WATER LINE	— 8"W —
SEWER LINE	— 8"SS —
GAS LINE	— 4"G —
STORM SEWER/CULVERT	— 24" CMP/RCP/DIP —
EDGE OF WOODS	⊞
CONTOUR LINE	⊞


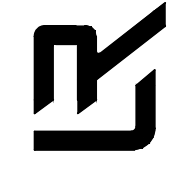
PROPOSED

PROPOSED CONTOUR	⊞
PROPOSED SPOT ELEVATION	⊞
PROPOSED SPOT CURB ELEVATION	⊞
STORM SEWER — PIPE	⊞
STORM SEWER — METERED END SECTION	⊞
STORM SEWER — GRATE INLET	⊞
STORM SEWER — JUNCTION BOX	⊞
STORM SEWER — FLARED END SECTION	⊞
STORM SEWER — HEADWALL	⊞
STORM SEWER — NO WING	⊞
STORM SEWER — SINGLE WING	⊞
STORM SEWER — DOUBLE WING	⊞
STORM SEWER — AREA INLET	⊞
GRADE BREAK LINE	⊞
HIGH POINT	HP
LOW POINT	LP
CUT LINE	— C —
FILL LINE	— F —
SANITARY SEWER PIPE	— SAN —
SANITARY SEWER MANHOLE	⊙
PROPOSED CURB	⊞
PROPOSED CONCRETE	⊞
CONSTRUCTION — ENTRANCE/EXIT	⊞
CHECK DAM	⊞
DIVERSION BERM	⊞
DOWNDRAIN STRUCTURE — TEMPORARY	⊞
ROCK DAM	⊞
SEDIMENT BARRIER — SILT FENCE	⊞
SEDIMENT BARRIER — GRAVEL RING	⊞
SEDIMENT BARRIER — BLOCK & GRAVEL	⊞
SEDIMENT BARRIER — BLOCK	⊞
TEMPORARY SEDIMENT BASIN	⊞
SILT FENCE — TYPE A	⊞
SILT FENCE — TYPE B	⊞
SILT FENCE — TYPE C	⊞
STORM DRAIN OUTLET PROTECTION	⊞
SURFACE ROUGHENING	⊞
DISTURBED AREA STABILIZATION — TEMPORARY STABILIZATION	⊞
DISTURBED AREA STABILIZATION — TEMPORARY GRASSING	⊞
DISTURBED AREA STABILIZATION — PERMANENT GRASSING	⊞
MATTING/BLANKETS	⊞

REVISIONS DATE

CITY OF LITTLE ROCK, ARKANSAS
MORRISON COURT DRAINAGE
GENERAL NOTES, LEGEND, AND QUANTITIES
90%


DEPARTMENT OF PUBLIC WORKS
CIVIL ENGINEERING
701 W. MARKHAM
LITTLE ROCK, ARKANSAS 72201

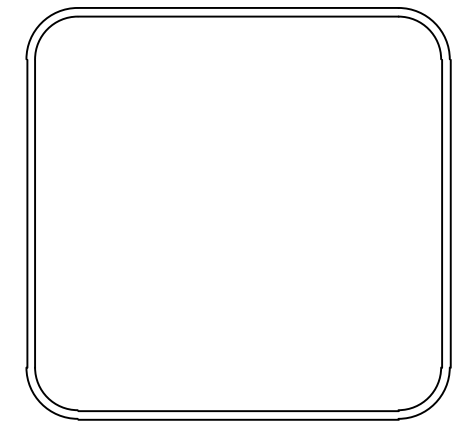



DRAWN BY
VSE
DESIGNED
VSE
CHECKED
JPC
DATE
8/15/2024
SCALE
NTS
PROJECT NO.
05-17-DR-208A
SHEET NO.
C2

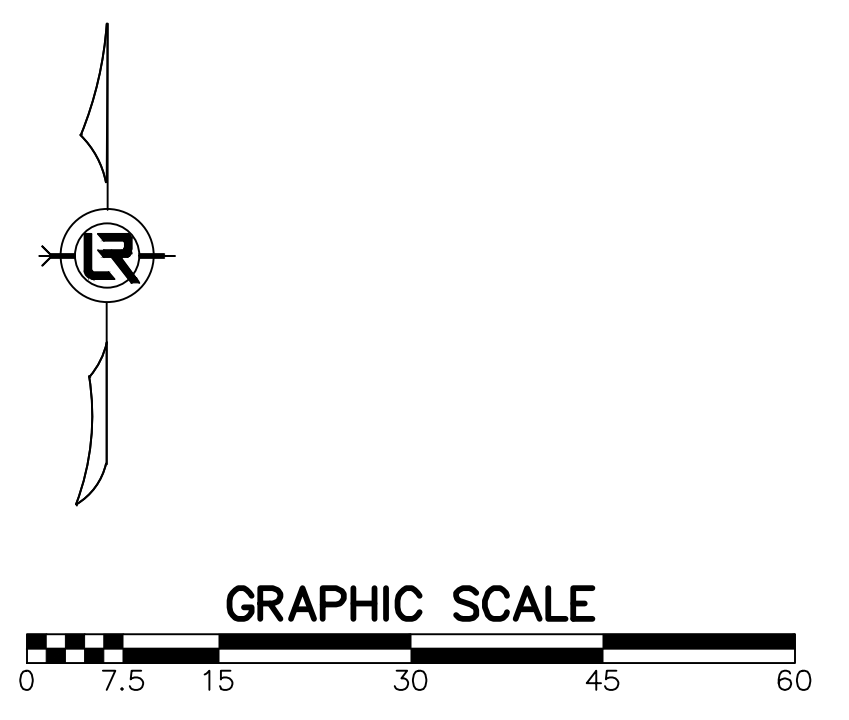
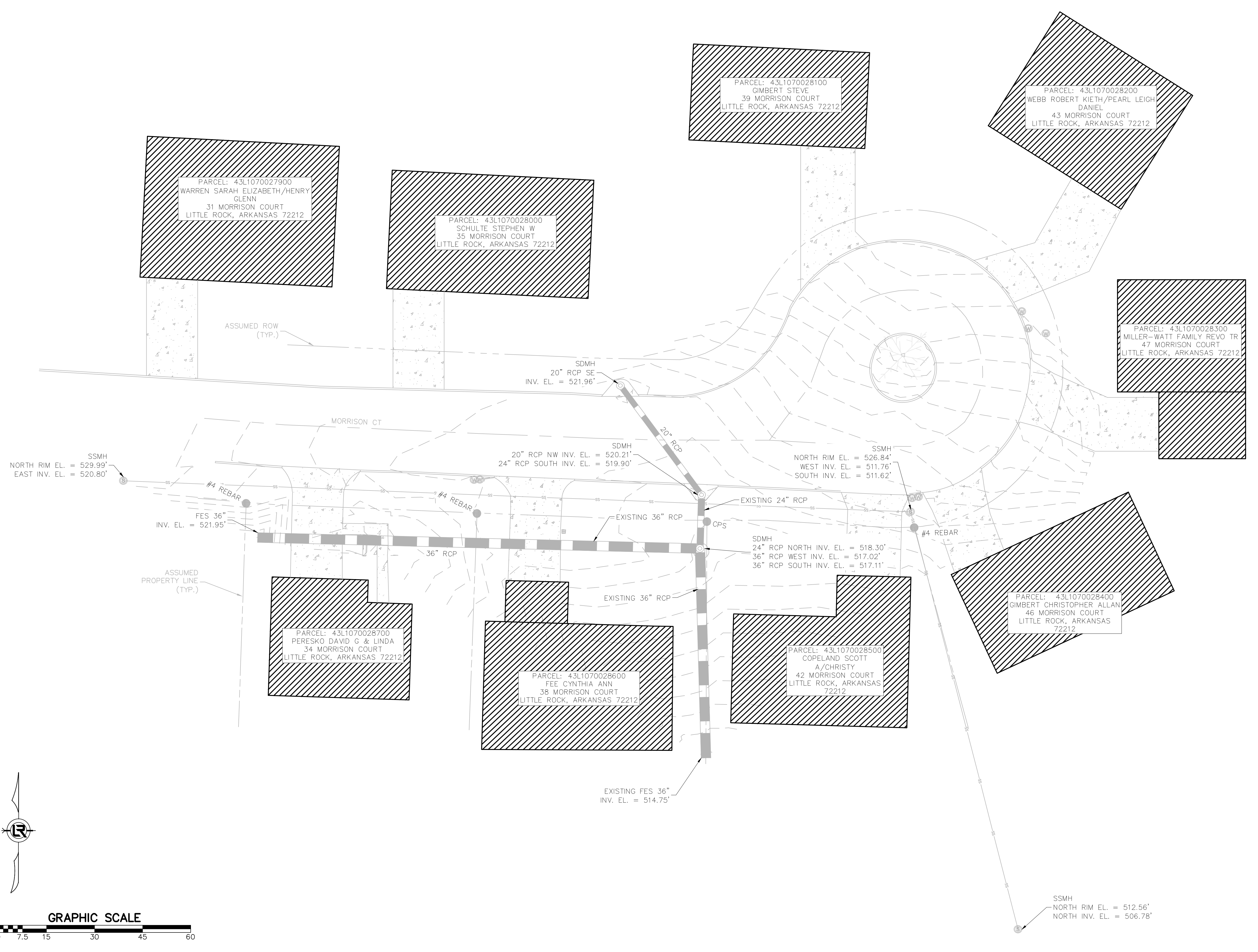
REVISIONS	DATE

CITY OF LITTLE ROCK, ARKANSAS
MORRISON COURT DRAINAGE
 EXISTING LAYOUT
 90%


 DEPARTMENT OF PUBLIC WORKS
 CIVIL ENGINEERING
 701 W. MARKHAM
 LITTLE ROCK, ARKANSAS 72201




DRAWN BY
 VSE
DESIGNED
 VSE
CHECKED
 JPC
DATE
 8/15/2024
SCALE
 1" = 15'
PROJECT NO.
 05-17-DR-208A
SHEET NO.
 C3

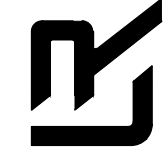
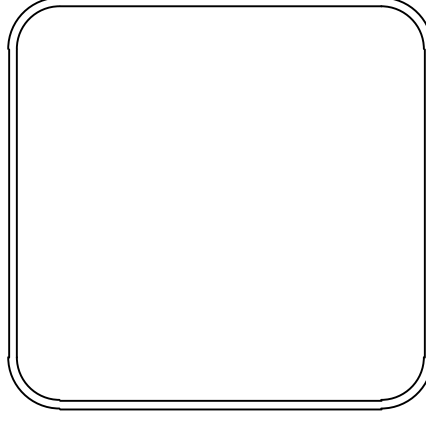


REVISIONS	DATE

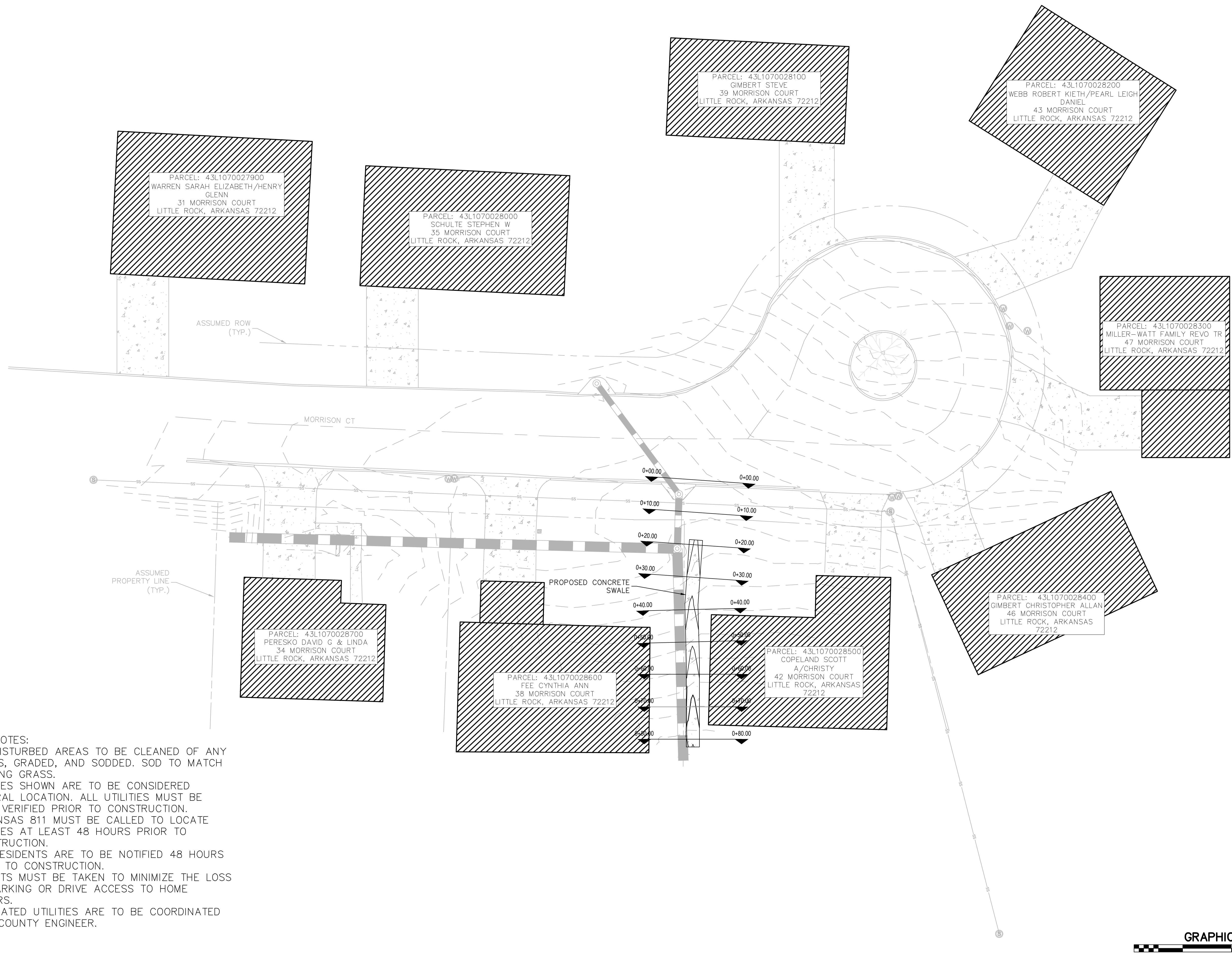
CITY OF LITTLE ROCK, ARKANSAS
MORRISON COURT DRAINAGE
PROPOSED LAYOUT
90%



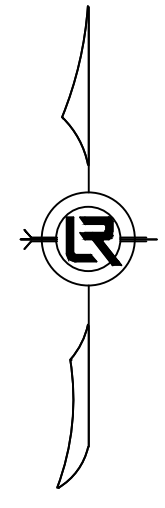
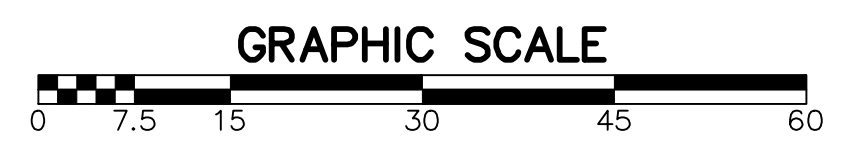
DEPARTMENT OF PUBLIC WORKS
CIVIL ENGINEERING
701 W. MARKHAM
LITTLE ROCK, ARKANSAS 72201

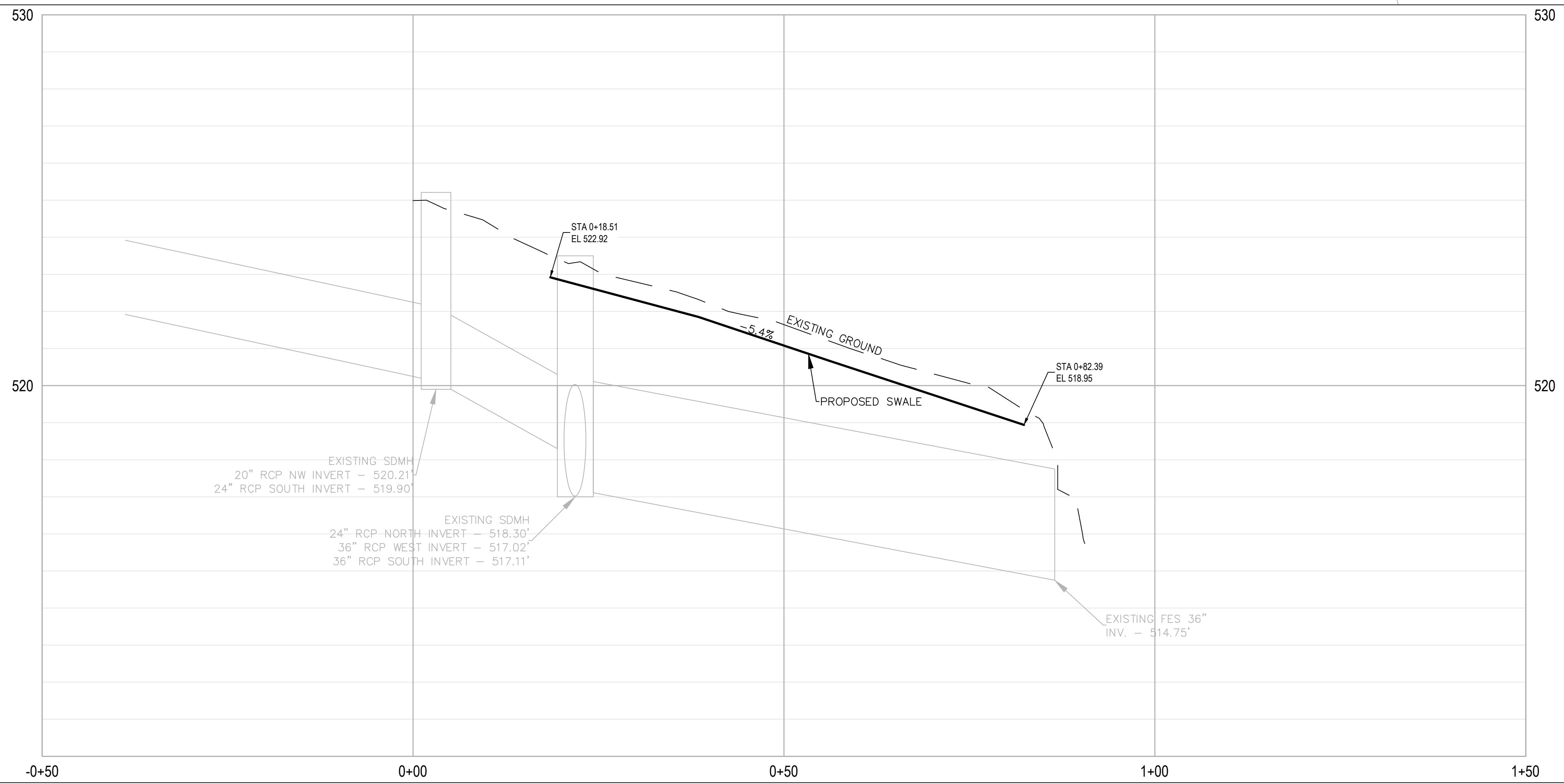
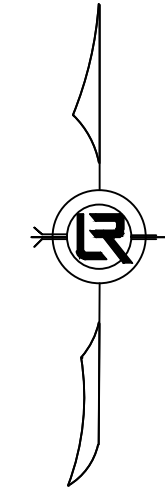
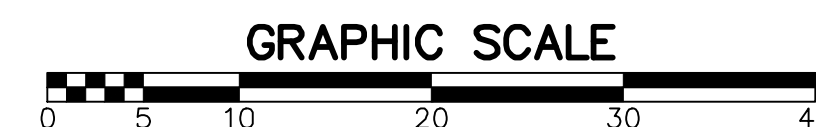
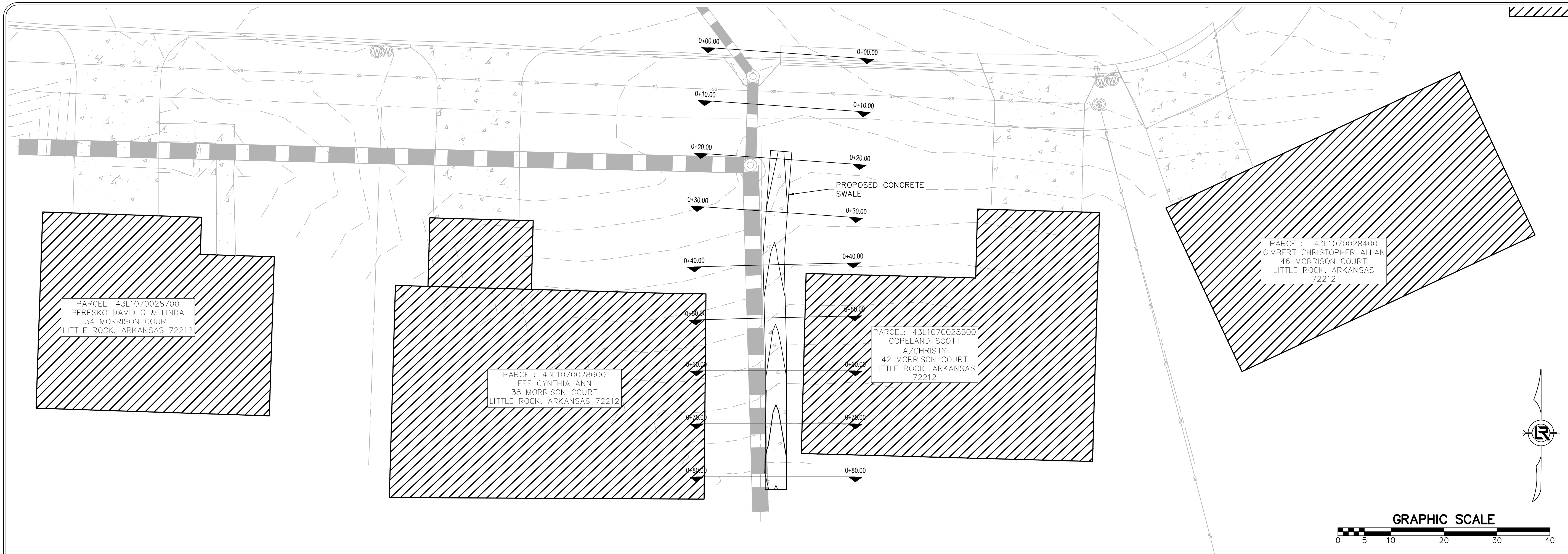



DRAWN BY JAA
DESIGNED VSE
CHECKED JPC
DATE 8/15/2024
SCALE 1" = 15'
PROJECT NO. 05-17-DR-208A
SHEET NO. C4




- GENERAL NOTES:
1. ALL DISTURBED AREAS TO BE CLEANED OF ANY DEBRIS, GRADED, AND SODDED. SOD TO MATCH EXISTING GRASS.
 2. UTILITIES SHOWN ARE TO BE CONSIDERED GENERAL LOCATION. ALL UTILITIES MUST BE FIELD VERIFIED PRIOR TO CONSTRUCTION.
 3. ARKANSAS 811 MUST BE CALLED TO LOCATE UTILITIES AT LEAST 48 HOURS PRIOR TO CONSTRUCTION.
 4. ALL RESIDENTS ARE TO BE NOTIFIED 48 HOURS PRIOR TO CONSTRUCTION.
 5. EFFORTS MUST BE TAKEN TO MINIMIZE THE LOSS OF PARKING OR DRIVE ACCESS TO HOME OWNERS.
 6. RELOCATED UTILITIES ARE TO BE COORDINATED WITH COUNTY ENGINEER.

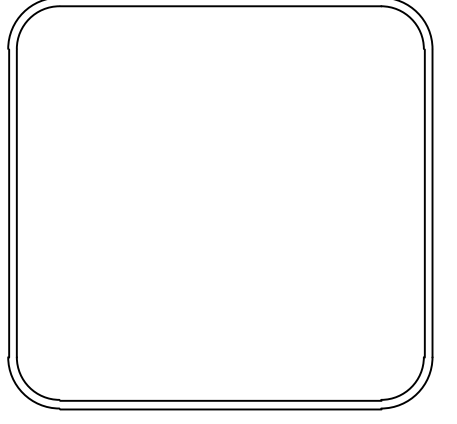




REVISIONS	DATE

CITY OF LITTLE ROCK, ARKANSAS
MORRISON COURT DRAINAGE
PLAN & PROFILE
90%

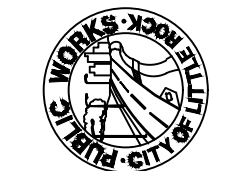

DEPARTMENT OF PUBLIC WORKS
CIVIL ENGINEERING
701 W. MARKHAM
LITTLE ROCK, ARKANSAS 72201

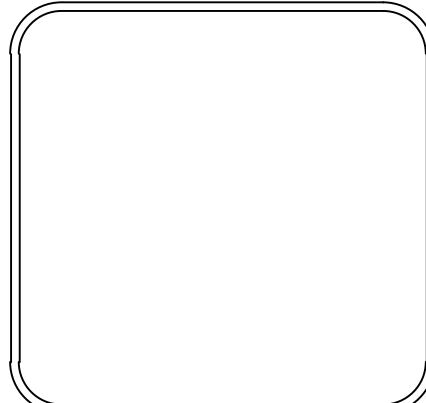


DRAWN BY
JAA
DESIGNED
VSE
CHECKED
JPC
DATE
8/15/2024
SCALE
1" = 10'
PROJECT NO.
05-17-DR-208A
SHEET NO.
C5

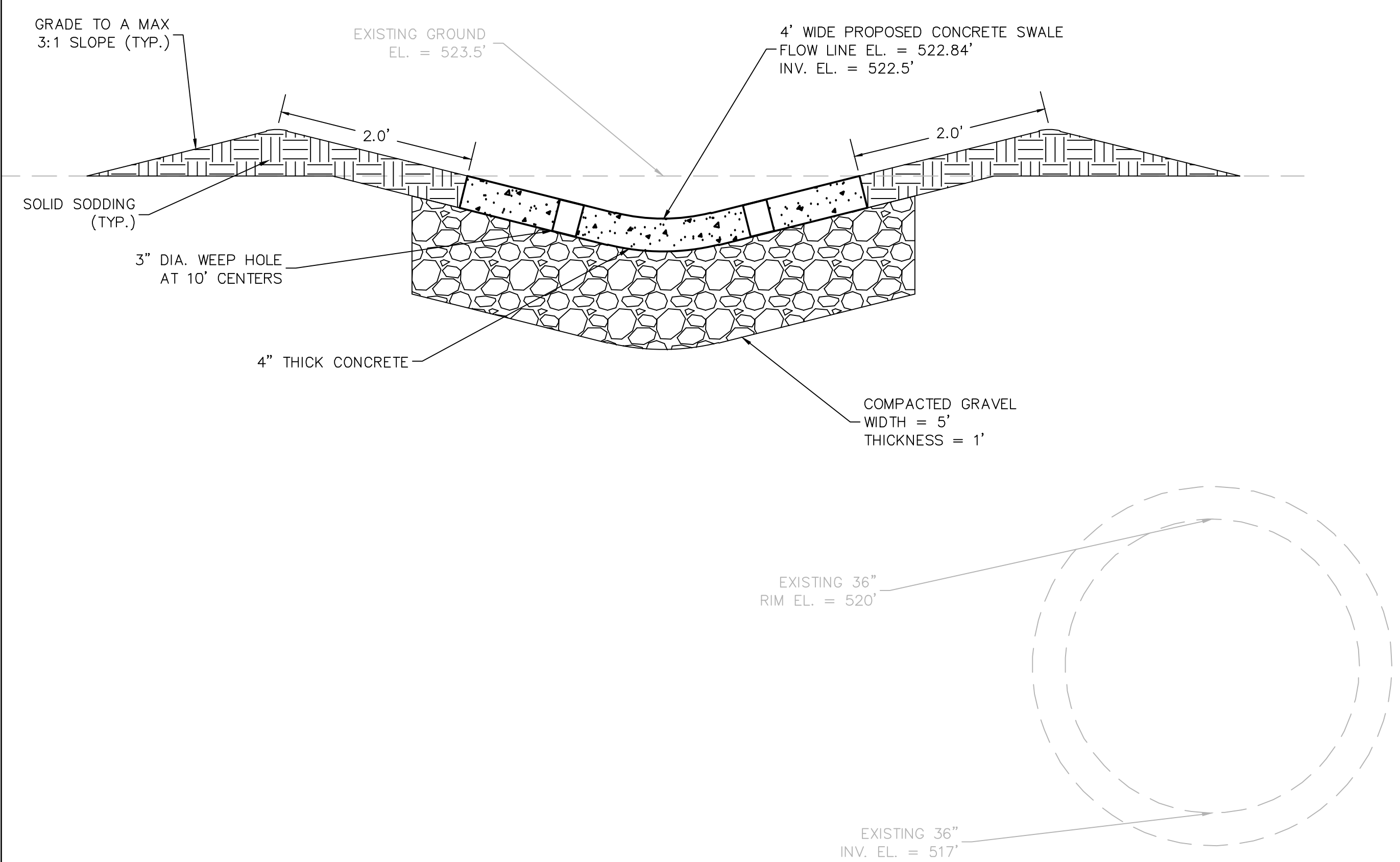
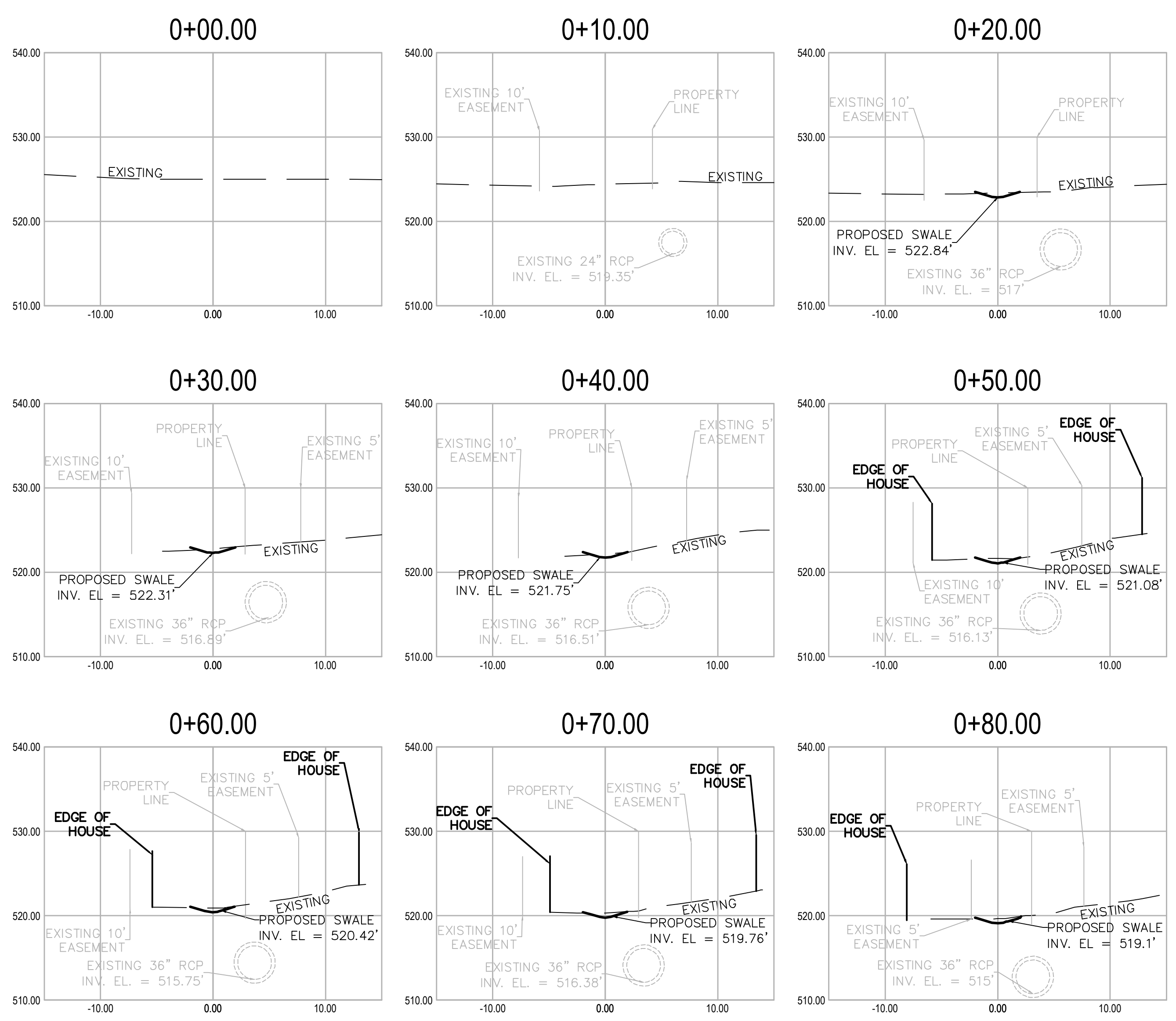
REVISIONS	DATE

CITY OF LITTLE ROCK, ARKANSAS
MORRISON COURT DRAINAGE
CROSS SECTIONS
90%

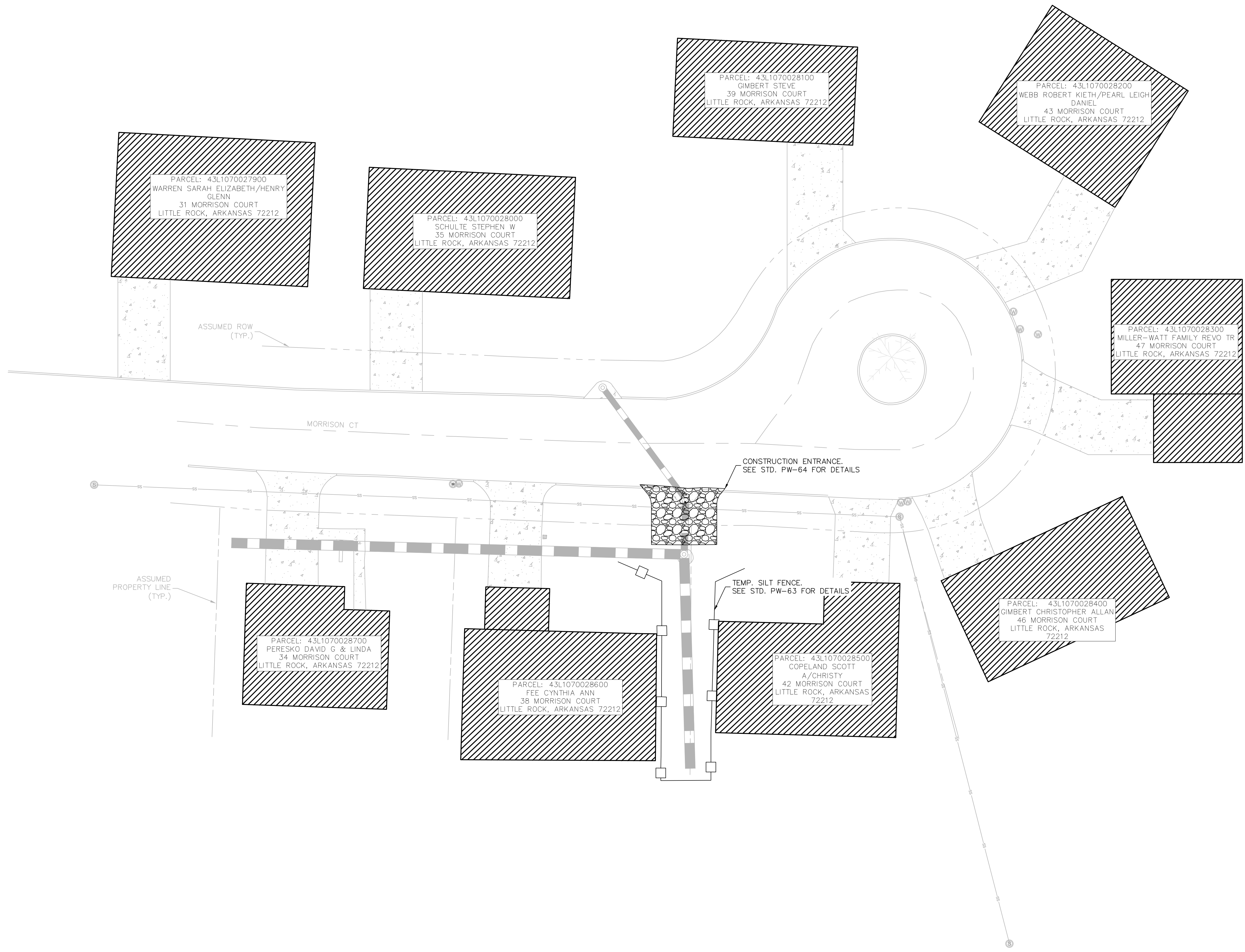

 DEPARTMENT OF PUBLIC WORKS
 CIVIL ENGINEERING
 701 W. MARKHAM
 LITTLE ROCK, ARKANSAS 72201



DRAWN BY	JAA
DESIGNED	VSE
CHECKED	JPC
DATE	8/15/2024
SCALE	NTS
PROJECT NO.	05-17-DR-208A
SHEET NO.	C6



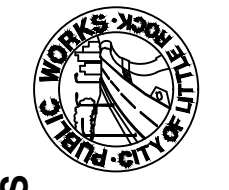
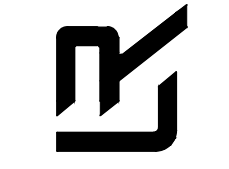
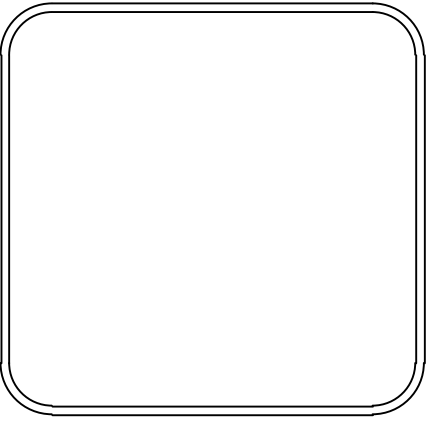
SECTION VIEW
STATION 0+20.00



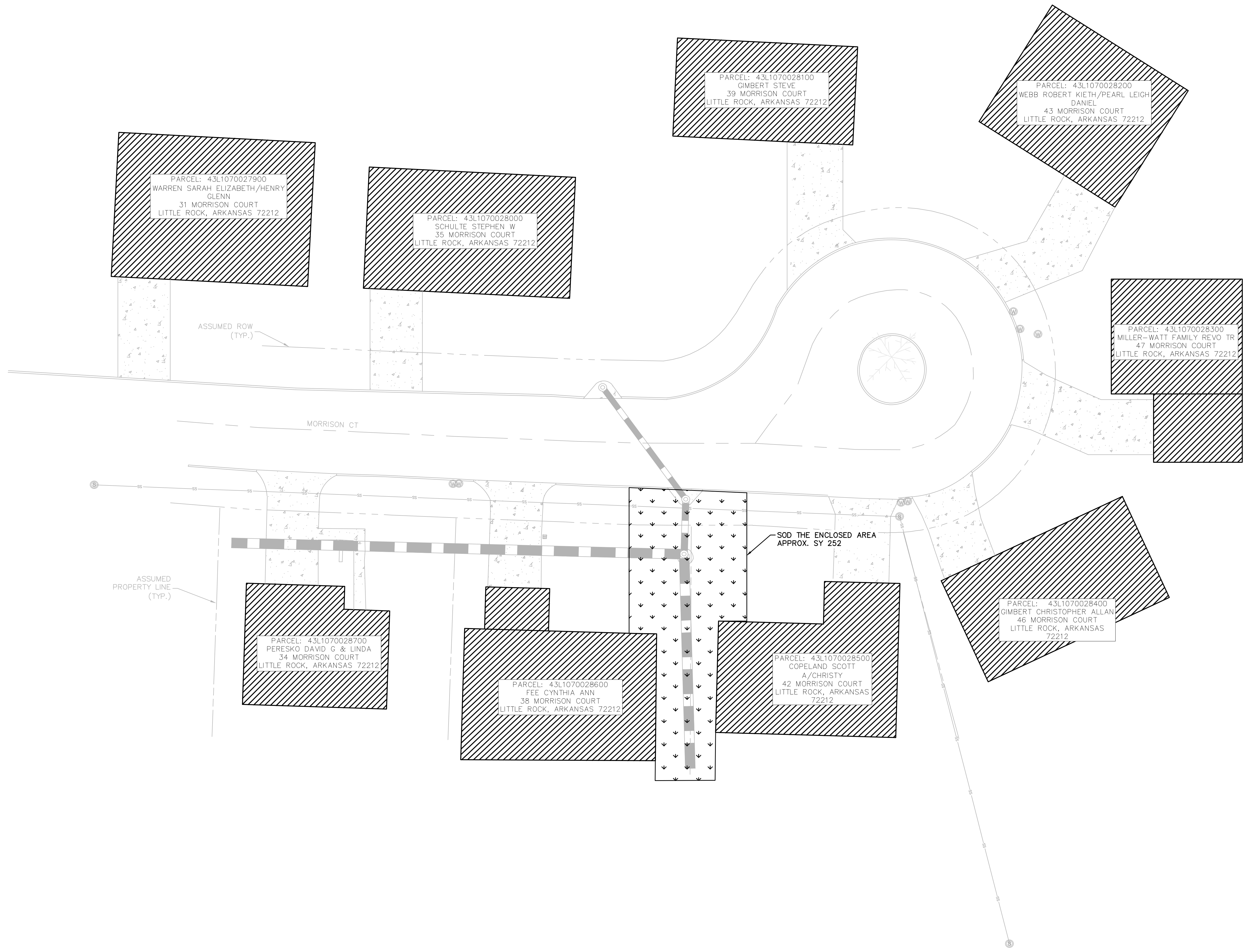
REVISIONS	DATE

CITY OF LITTLE ROCK, ARKANSAS
MORRISON COURT DRAINAGE
 EROSION CONTROL PHASE 1
 90%

DEPARTMENT OF PUBLIC WORKS
 CIVIL ENGINEERING
 701 W. MARKHAM
 LITTLE ROCK, ARKANSAS 72201

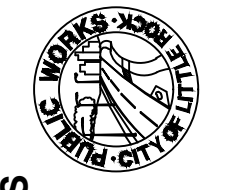




DRAWN BY
JAA
 DESIGNED
VSE
 CHECKED
JPC
 DATE
8/15/2024
 SCALE
1" = 15'
 PROJECT NO.
05-17-DR-208A
 SHEET NO.
C7


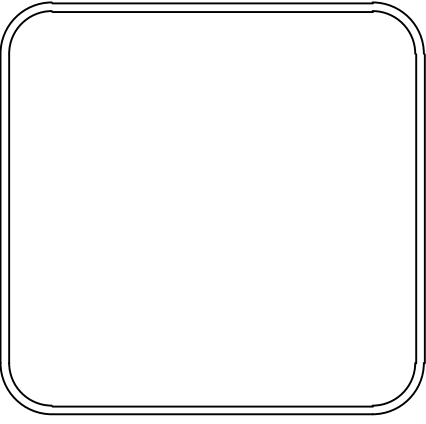


REVISIONS	DATE

CITY OF LITTLE ROCK, ARKANSAS
MORRISON COURT DRAINAGE
EROSION CONTROL PHASE 2
90%



DEPARTMENT OF PUBLIC WORKS
CIVIL ENGINEERING
701 W. MARKHAM
LITTLE ROCK, ARKANSAS 72201

DRAWN BY
JAA
DESIGNED
VSE
CHECKED
JPC
DATE
8/15/2024
SCALE
1" = 15'
PROJECT NO.
05-17-DR-208A
SHEET NO.
C8