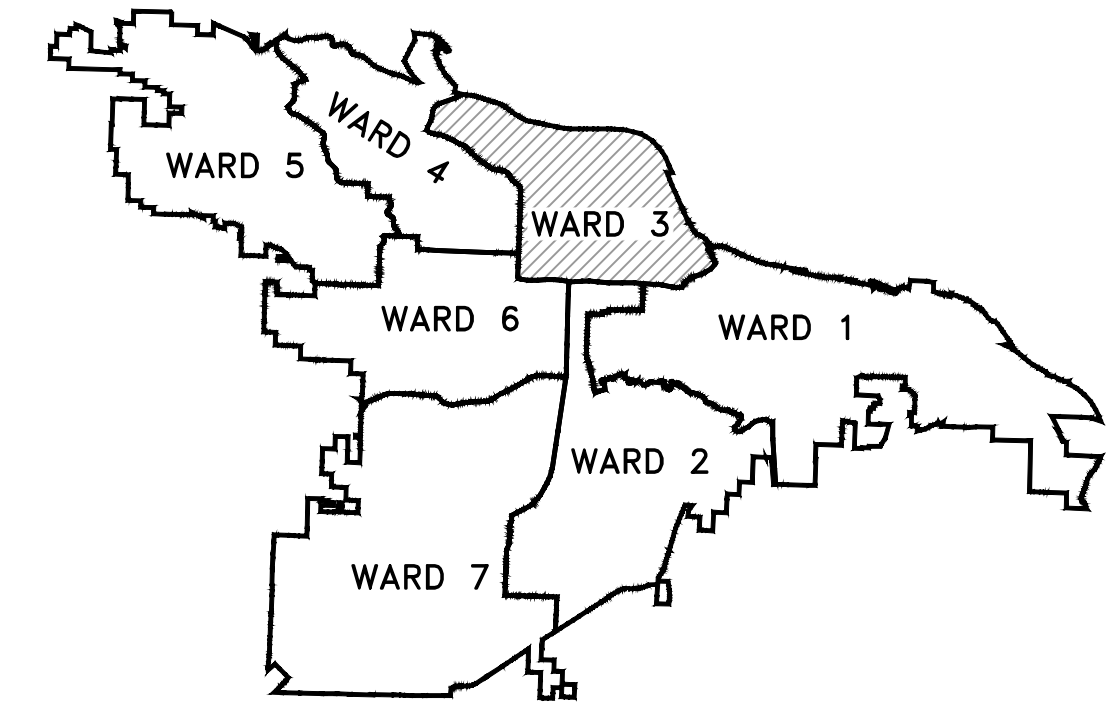
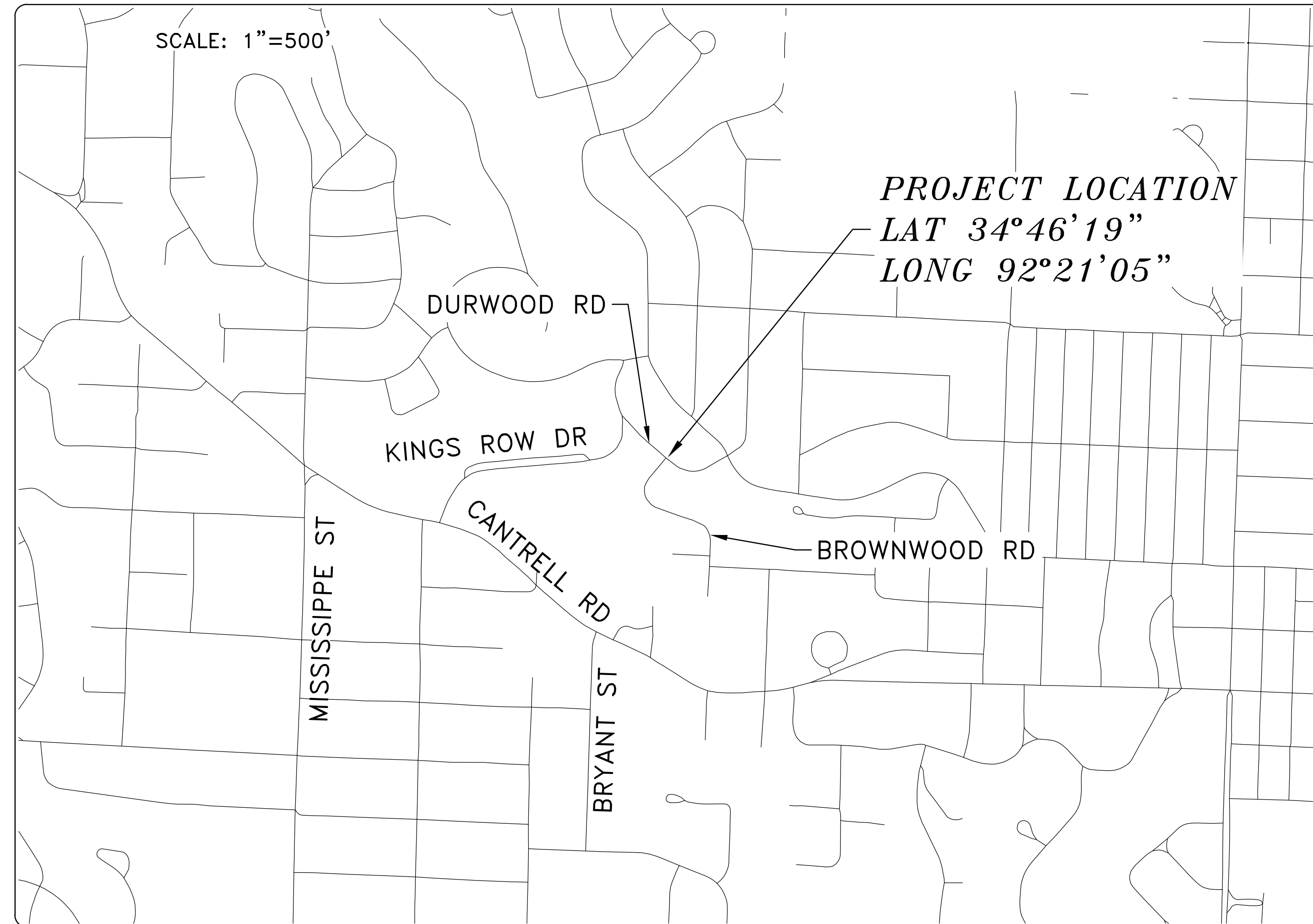
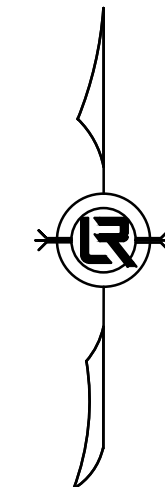


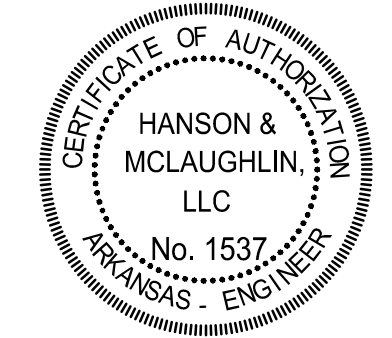
DURWOOD RD AT BROWNWOOD RD DRAINAGE

REVISIONS	DATE



PROJECT LOCATION - WARD 1

SHEET NO.	TITLE
C1	COVER SHEET
C2	LEGEND AND QUANTITIES
C3	EXISTING CONDITIONS
C4	PLAN AND PROFILE
C5	DRIVEWAY PLANS
C6	EROSION CONTROL



DURWOOD RD AT BROWNWOOD RD DRAINAGE
 CITY OF LITTLE ROCK, ARKANSAS
 COVER SHEET

DEPARTMENT OF PUBLIC WORKS
 CIVIL ENGINEERING
 701 W. MARKHAM
 LITTLE ROCK, ARKANSAS 72201



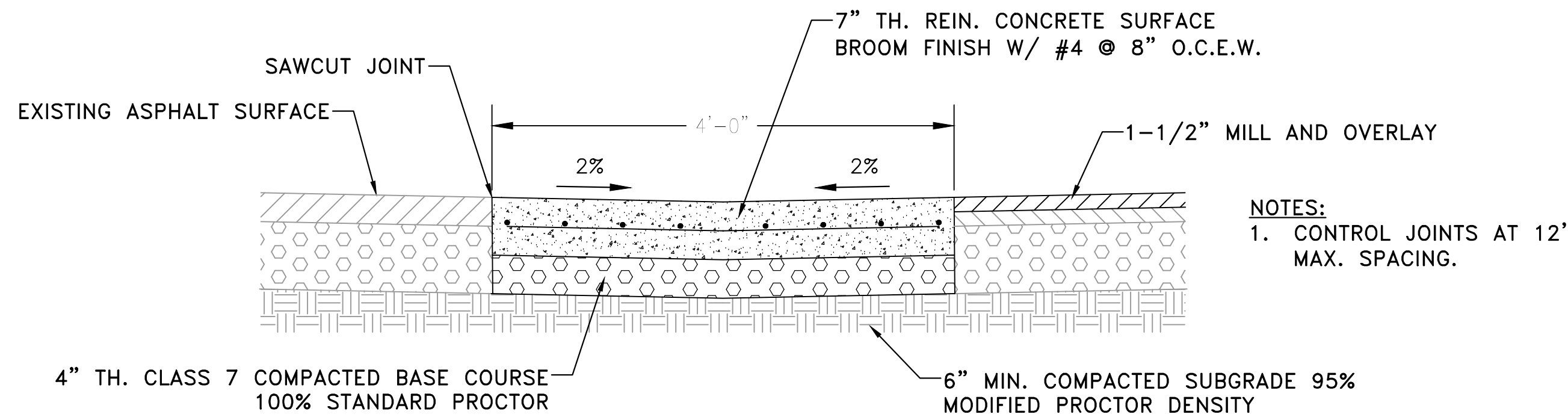
DEPARTMENT OF PUBLIC WORKS
 CIVIL ENGINEERING
 701 WEST MARKHAM STREET
 LITTLE ROCK, ARKANSAS 72201

HANSON & MCLAUGHLIN, LLC
 320 EXECUTIVE COURT, SUITE 202
 LITTLE ROCK, ARKANSAS 72205
 (501) 716-2850

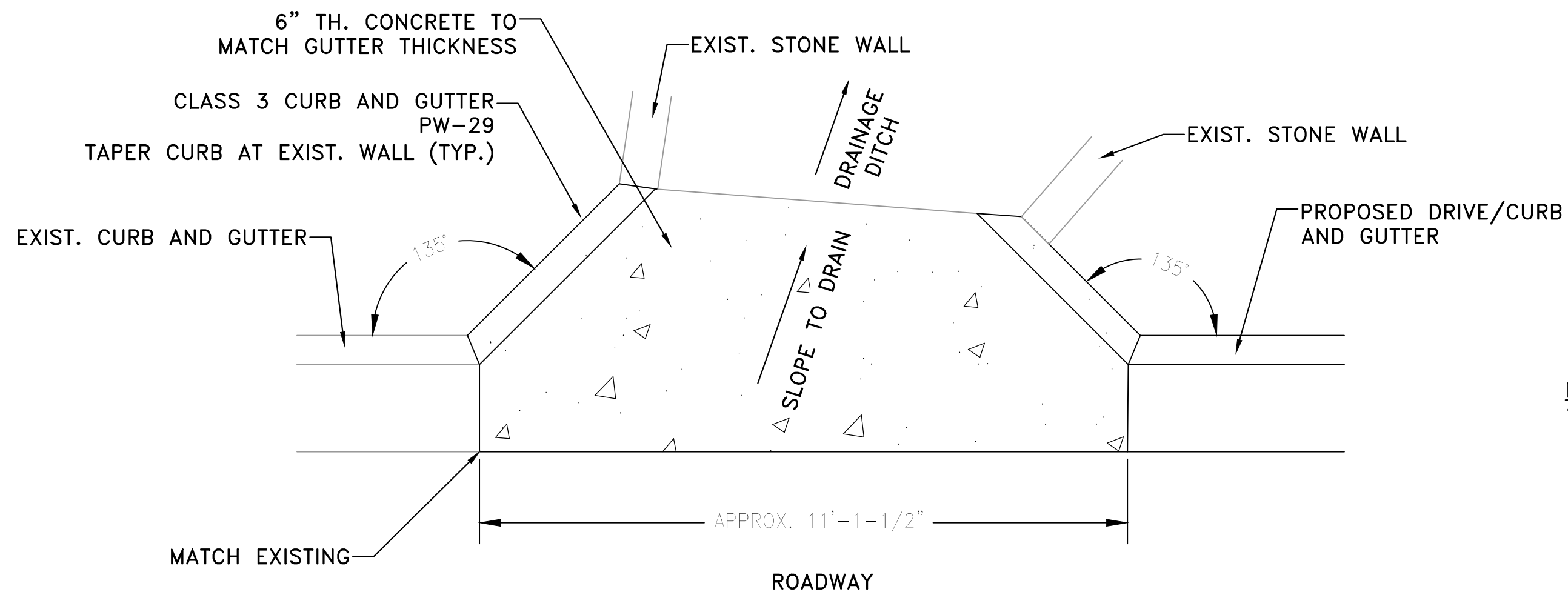
DRAWN BY	KMH
DESIGNED	KMH
CHECKED	FJS
DATE	8-8-2024
SCALE	N.T.S.
PROJECT NO.	03-22-DR-32
SHEET NO.	C1

CLR PROJECT 03-22-DR-32
 DURWOOD ROAD AT BROWNWOOD ROAD DRAINAGE
 AUGUST 8, 2024

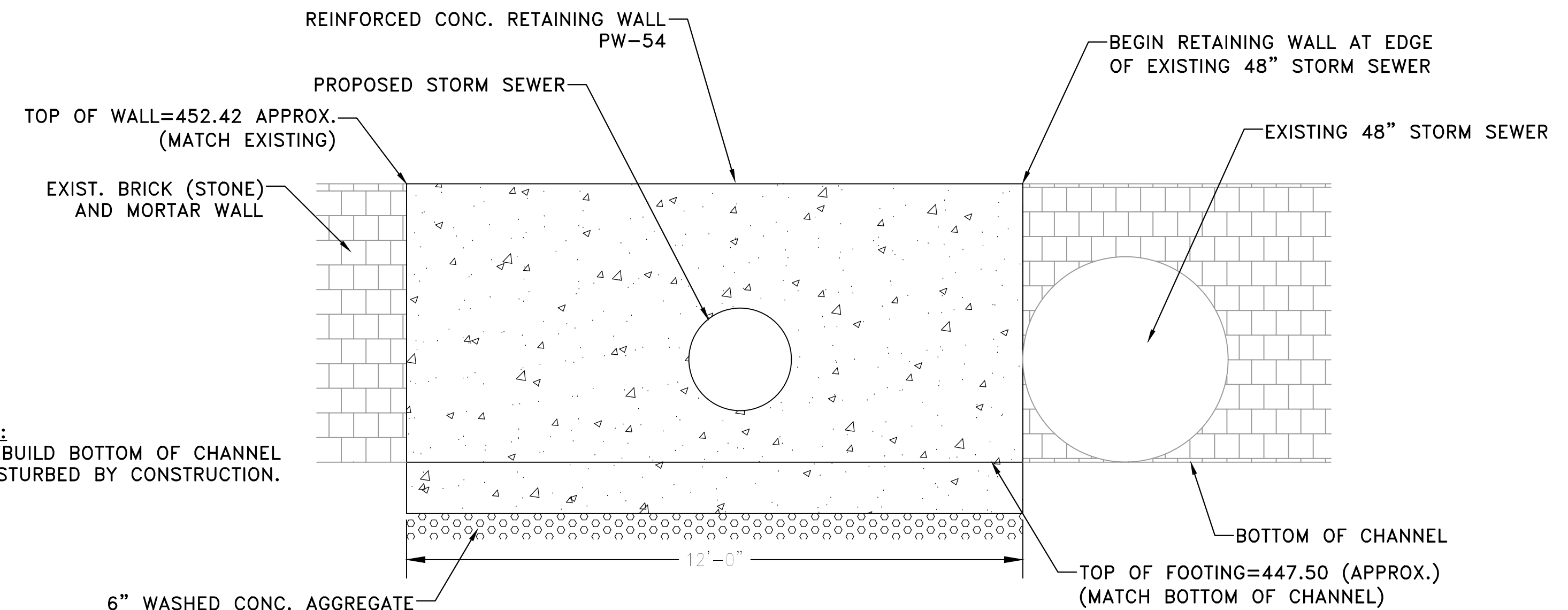
ITEM #	ITEM DESCRIPTION	UNIT	QUANTITY
2.01	Site Preparation (Incl. Mobilization)	LS	1
6.01	Asphalt Surface Course	SY	163
7.06	Concrete Driveway (6" Thick), Standard Finish	SF	577
8.03	Concrete Curb and Gutter (Class 3)	LF	264
SP-8.03	Valley Gutter	SF	187
SP-9.03	Concrete Flume	SF	46
9.04	Concrete Sidewalk (4" Thick)	SF	40
10.04	Curb Inlet - 4' Box	EA	4
10.07	Wing 3' Extension	EA	6
SP-11.20	Reinforced Concrete Retaining Wall	CY	3
13.24C	Storm Drain Pipe, 24" Cross Drain	LF	28
13.24S	Storm Drain Pipe, 24" Side Drain	LF	88
13.18C	Storm Drain Pipe, 18" Cross Drain	LF	27
13.18S	Storm Drain Pipe, 18" Side Drain	LF	33
14.01	Solid Sodding (Bermuda) Includes 4" Topsoil	SY	224
16.01	Maintenance of Traffic	LS	1
17.01	Pavement Repairs	SY	66
18.55	Water for Dust Control	GAL	10,000
19.01	Final Clean-Up	LS	1
24.06	Sediment Barrier, Silt Fence (SD1)	EA	5
24.09	Sediment Barrier, Block (SD4)	EA	5
24.11	Silt Fence - Type A (SFA)	LF	125
24.12	Silt Fence - Type B (SFB)	LF	125
24.18	Disturbed Area Stabilization - Permanent Grassing (TS3)	AC	0.10
25.04	Fence Chain Link (4')	LF	33
26.10	Trench & Excavation Safety	LS	1
27.10	Cold Milling Asphalt Pavement	SY	163



SP-8.03 VALLEY GUTTER
NTS



SP-9.03 CONCRETE FLUME
NTS



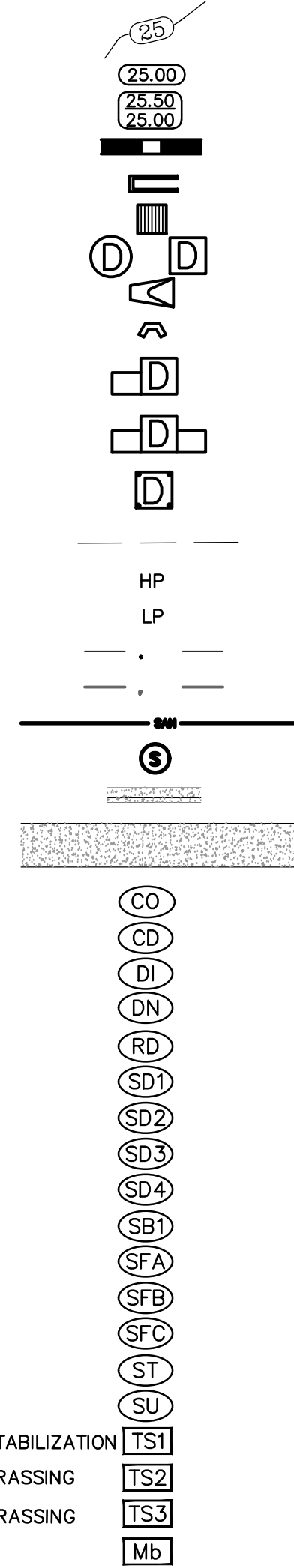
SP-11.20 REINFORCED CONCRETE RETAINING WALL
NTS

EXISTING

- IRON ROD
- PK NAIL
- R.R. SPIKE
- CONC. MONUMENT
- WATER VALVE
- WATER METER
- FIRE HYDRANT
- GAS METER
- GAS VALVE
- CLEAN-OUT
- GUARD POST (BOLLARD)
- SIGN POST
- BENCHMARK
- STORM SEWER MANHOLE
- SANITARY SEWER MANHOLE
- TELEPHONE MANHOLE
- ELECTRIC MANHOLE
- TELEPHONE BOX
- ELECTRIC BOX
- CABLE BOX
- UTILITY POLE
- GUY WIRE
- LIGHT POLE
- POST OR POLE (TYPE AS NOTED)
- MAILBOX
- DECIDUOUS TREE
- EVERGREEN/CONIFEROUS TREE
- BUSH
- PROPERTY LINE
- SETBACK LINE
- EASEMENT LINE
- CURB
- FENCE
- OVERHEAD UTILITY
- UNDERGROUND TELEPHONE
- UNDERGROUND ELECTRIC
- WATER LINE
- SEWER LINE
- GAS LINE
- STORM SEWER/CULVERT
- CONTOUR LINE

PROPOSED

- CONTOUR
- SPOT ELEVATION
- SPOT CURB ELEVATION
- STORM SEWER - PIPE
- STORM SEWER - MITERED END SECTION
- STORM SEWER - GRATE INLET
- STORM SEWER - JUNCTION BOX
- STORM SEWER - FLARED END SECTION
- STORM SEWER - HEADWALL
- STORM SEWER - INLET WITH SINGLE EXTENSION
- STORM SEWER - INLET WITH DOUBLE EXTENSION
- STORM SEWER - AREA INLET
- GRADE BREAK LINE
- HIGH POINT
- LOW POINT
- CUT LINE
- FILL LINE
- SANITARY SEWER PIPE
- SANITARY SEWER MANHOLE
- CURB
- CONCRETE
- CONSTRUCTION - ENTRANCE/EXIT
- CHECK DAM
- DIVERSION BERM
- DOWNDRAIN STRUCTURE - TEMPORARY
- ROCK DAM
- SEDIMENT BARRIER - SILT FENCE
- SEDIMENT BARRIER - GRAVEL RING
- SEDIMENT BARRIER - BLOCK & GRAVEL
- SEDIMENT BARRIER - BLOCK
- TEMPORARY SEDIMENT BASIN
- SILT FENCE - TYPE A
- SILT FENCE - TYPE B
- SILT FENCE - TYPE C
- STORM DRAIN OUTLET PROTECTION
- SURFACE ROUGHENING
- DISTURBED AREA STABILIZATION - TEMPORARY STABILIZATION
- DISTURBED AREA STABILIZATION - TEMPORARY GRASSING
- DISTURBED AREA STABILIZATION - PERMANENT GRASSING
- MATTING/BLANKETS



REVISIONS	DATE

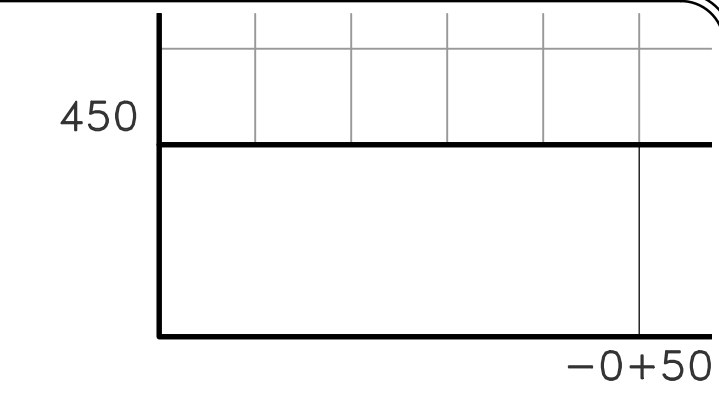
DURWOOD RD AT BROWNWOOD RD DRAINAGE
 CITY OF LITTLE ROCK, ARKANSAS
 LEGEND AND QUANTITIES

DEPARTMENT OF PUBLIC WORKS
 CIVIL ENGINEERING
 701 W. MARKHAM
 LITTLE ROCK, ARKANSAS 72201



DRAWN BY
 KMH
 DESIGNED
 KMH
 CHECKED
 FJS
 DATE
 8-8-2024
 SCALE
 N.T.S.
 PROJECT NO.
 03-22-DR-32
 SHEET NO.
 C2

REVISIONS	DATE

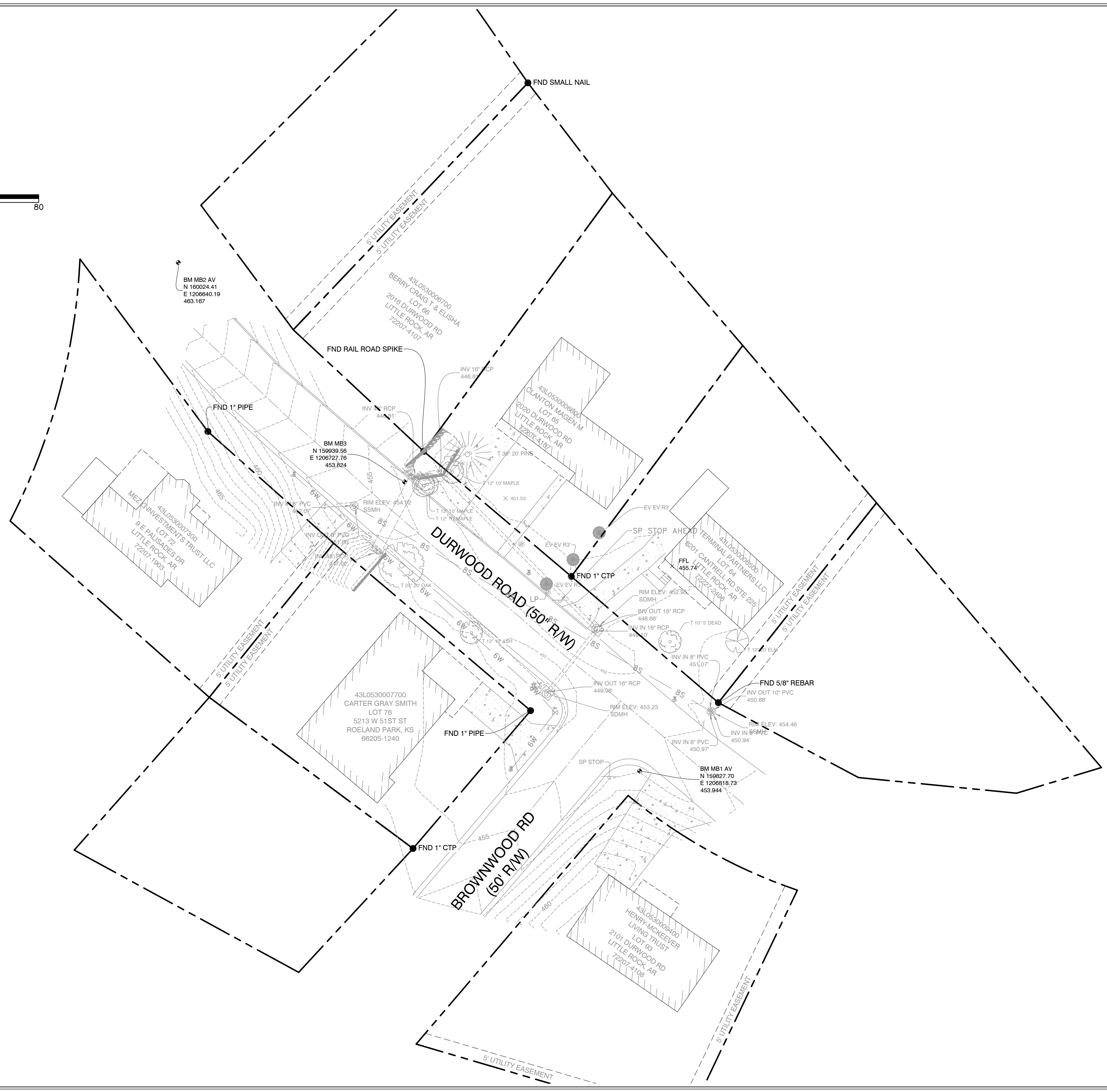
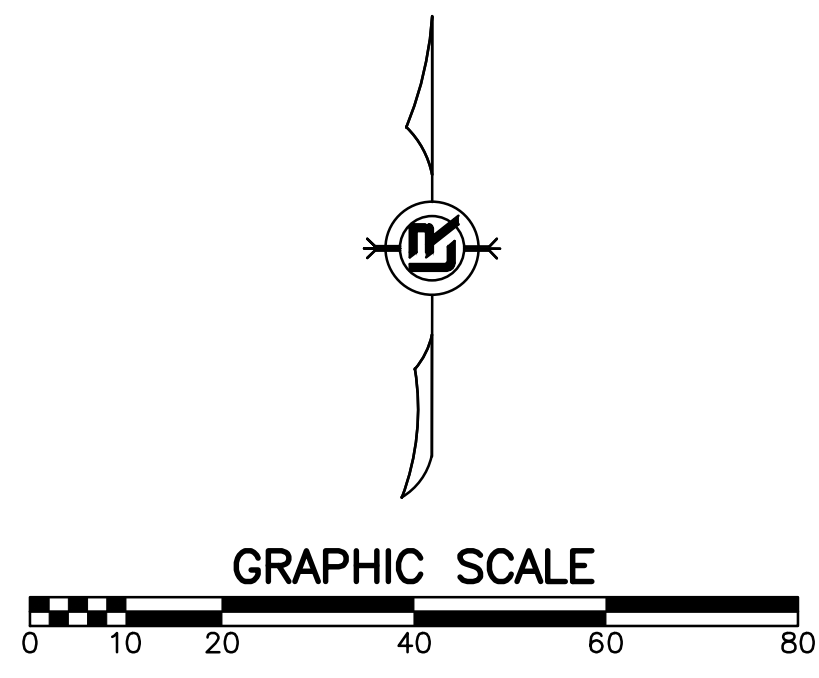


DURWOOD RD AT BROWNWOOD RD DRAINAGE
CITY OF LITTLE ROCK, ARKANSAS
EXISTING CONDITIONS

DEPARTMENT OF PUBLIC WORKS
 CIVIL ENGINEERING
 701 W. MARKHAM
 LITTLE ROCK, ARKANSAS 72201



DRAWN BY
KMH
DESIGNED
KMH
CHECKED
FJS
DATE
8-8-2024
SCALE
1"=20'
PROJECT NO.
03-22-DR-32
SHEET NO.
C3



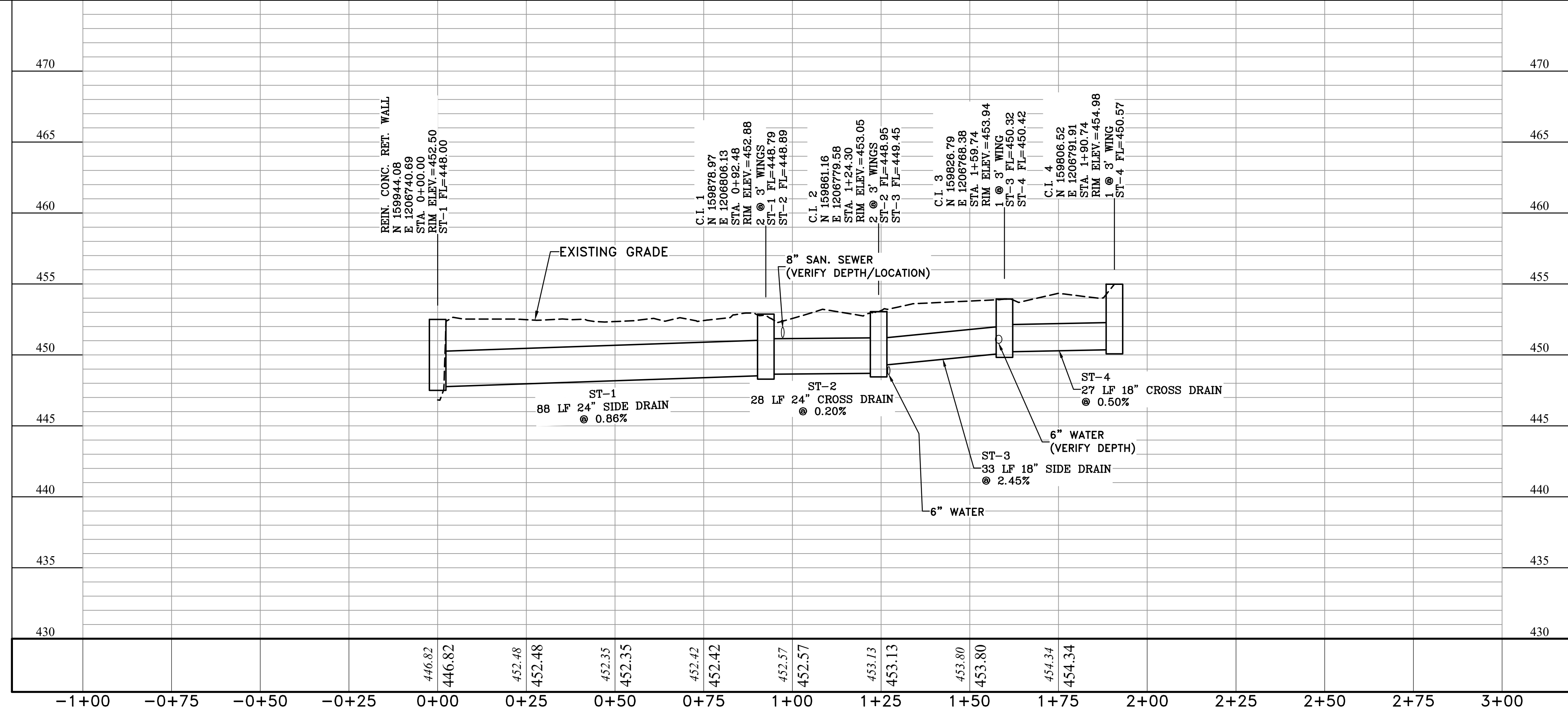
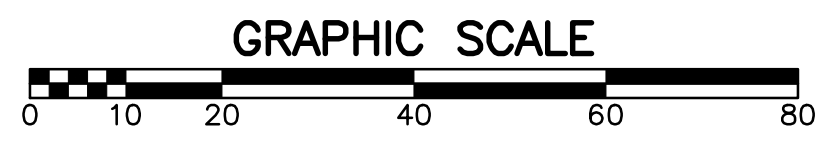
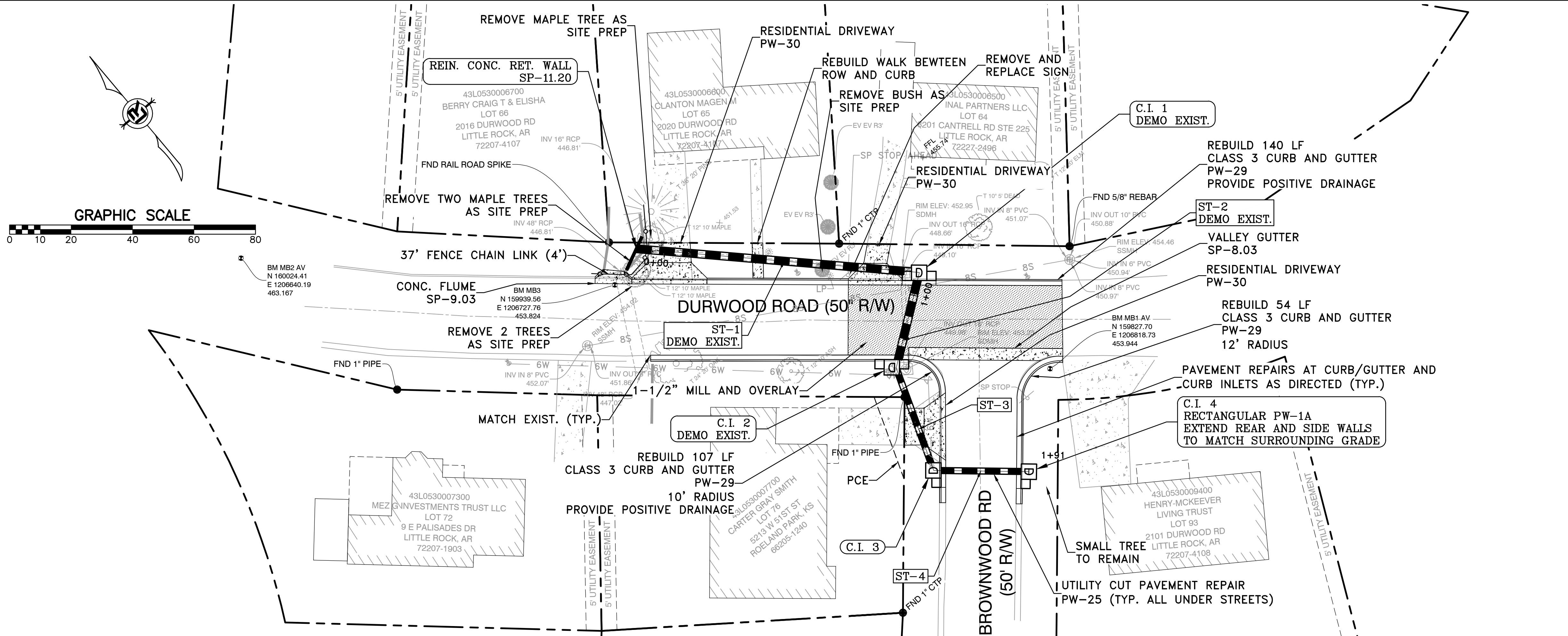
REVISIONS	DATE

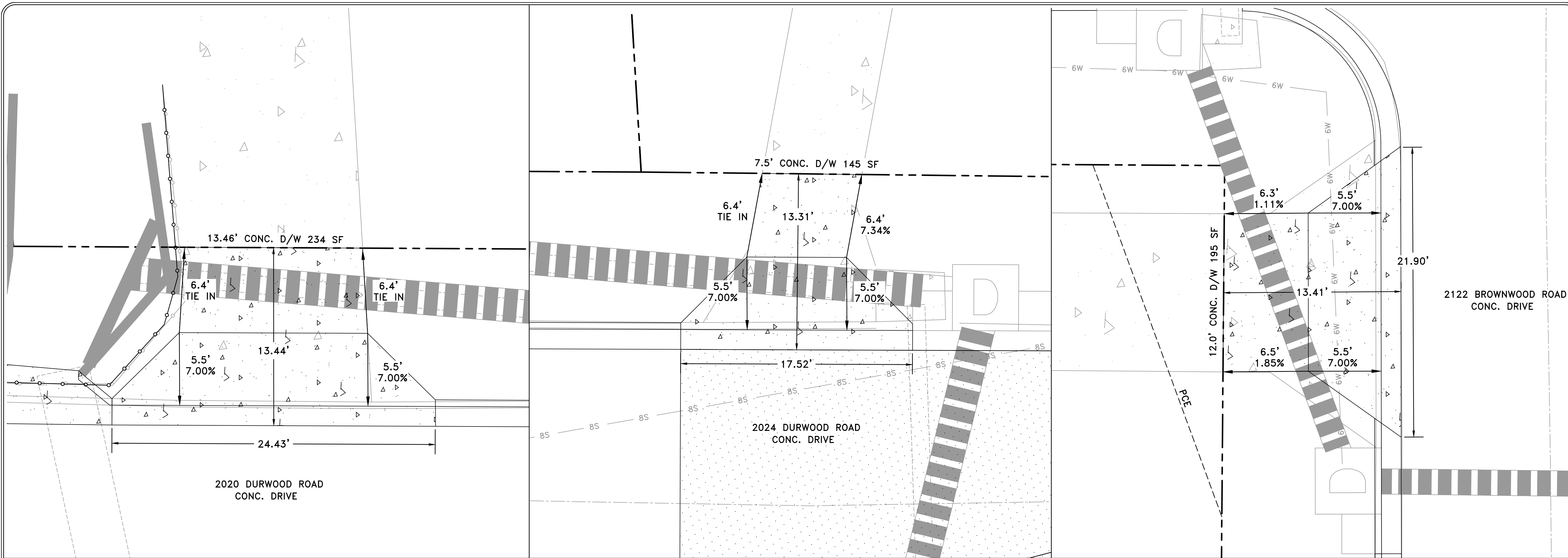
DURWOOD RD AT BROWNWOOD RD DRAINAGE
CITY OF LITTLE ROCK, ARKANSAS
PLAN AND PROFILE

DEPARTMENT OF PUBLIC WORKS
CIVIL ENGINEERING
701 W. MARKHAM
LITTLE ROCK, ARKANSAS 72201



DRAWN BY
KMH
DESIGNED
KMH
CHECKED
FJS
DATE
8-8-2024
SCALE
1"=20'
PROJECT NO.
03-22-DR-32
SHEET NO.
C4





REVISIONS	DATE

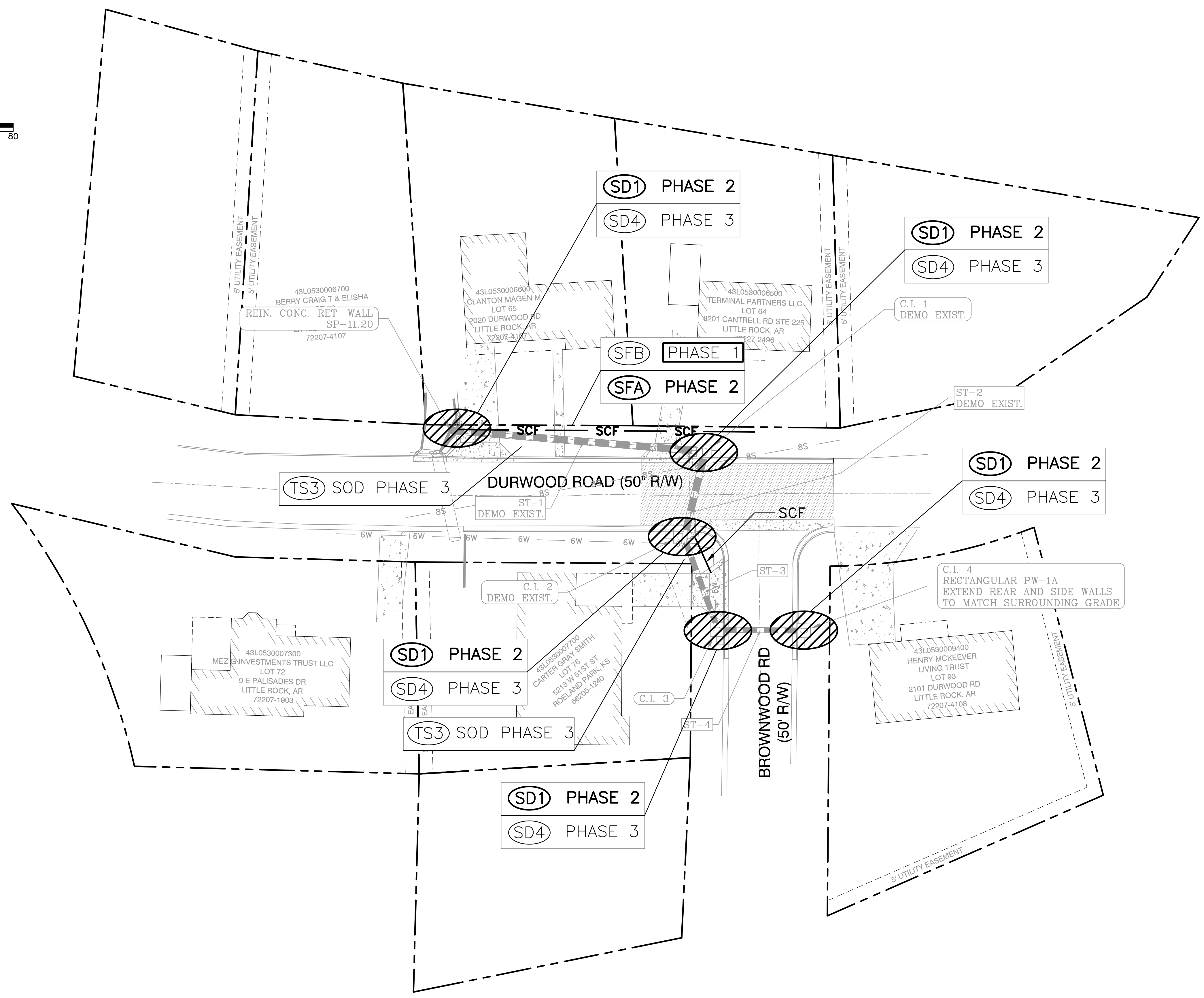
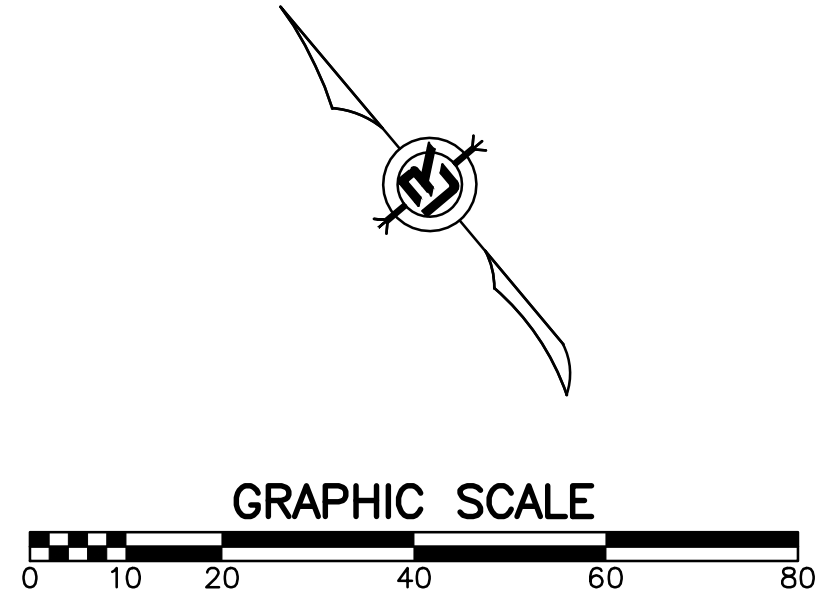
DURWOOD RD AT BROWNWOOD RD DRAINAGE
CITY OF LITTLE ROCK, ARKANSAS
DRIVEWAY PLANS

DEPARTMENT OF PUBLIC WORKS
 CIVIL ENGINEERING
 701 W. MARKHAM
 LITTLE ROCK, ARKANSAS 72201



DRAWN BY
 KMH
DESIGNED
 KMH
CHECKED
 FJS
DATE
 8-8-2024
SCALE
 1"=20'
PROJECT NO.
 03-22-DR-32
SHEET NO.
 C5

REVISIONS	DATE



DURWOOD RD AT BROWNWOOD RD DRAINAGE
CITY OF LITTLE ROCK, ARKANSAS
EROSION CONTROL

DEPARTMENT OF PUBLIC WORKS
 CIVIL ENGINEERING
 701 W. MARKHAM
 LITTLE ROCK, ARKANSAS 72201



DRAWN BY
 KMH
DESIGNED
 KMH
CHECKED
 FJS
DATE
 8-8-2024
SCALE
 1"=20'
PROJECT NO.
 03-22-DR-32
SHEET NO.
 C6