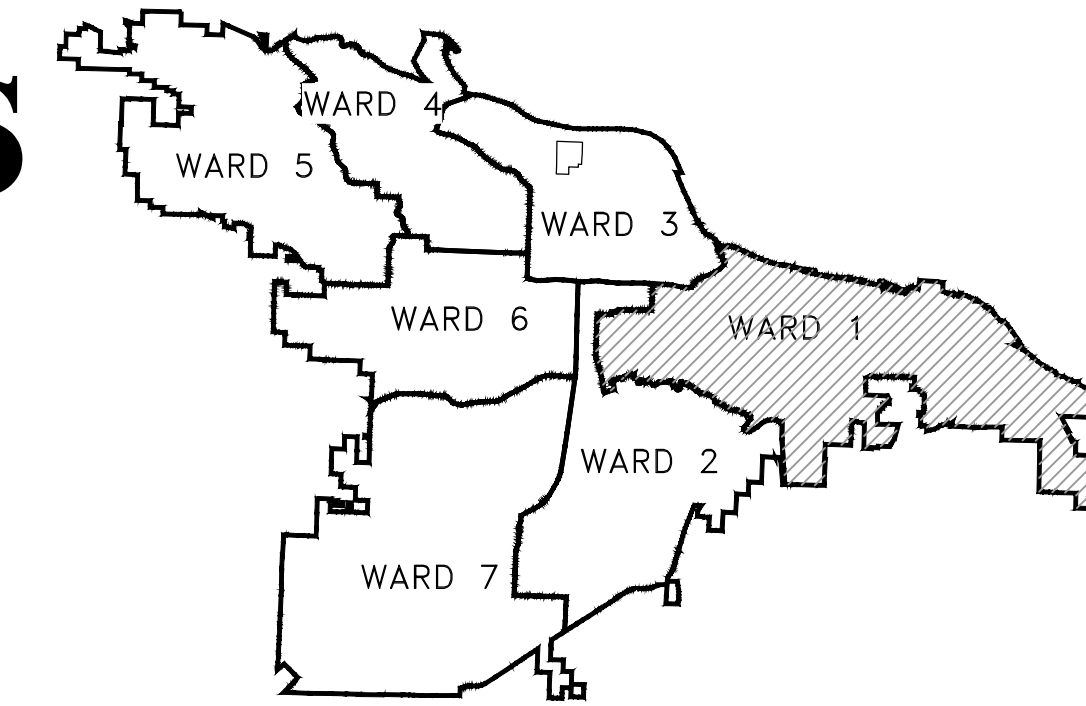
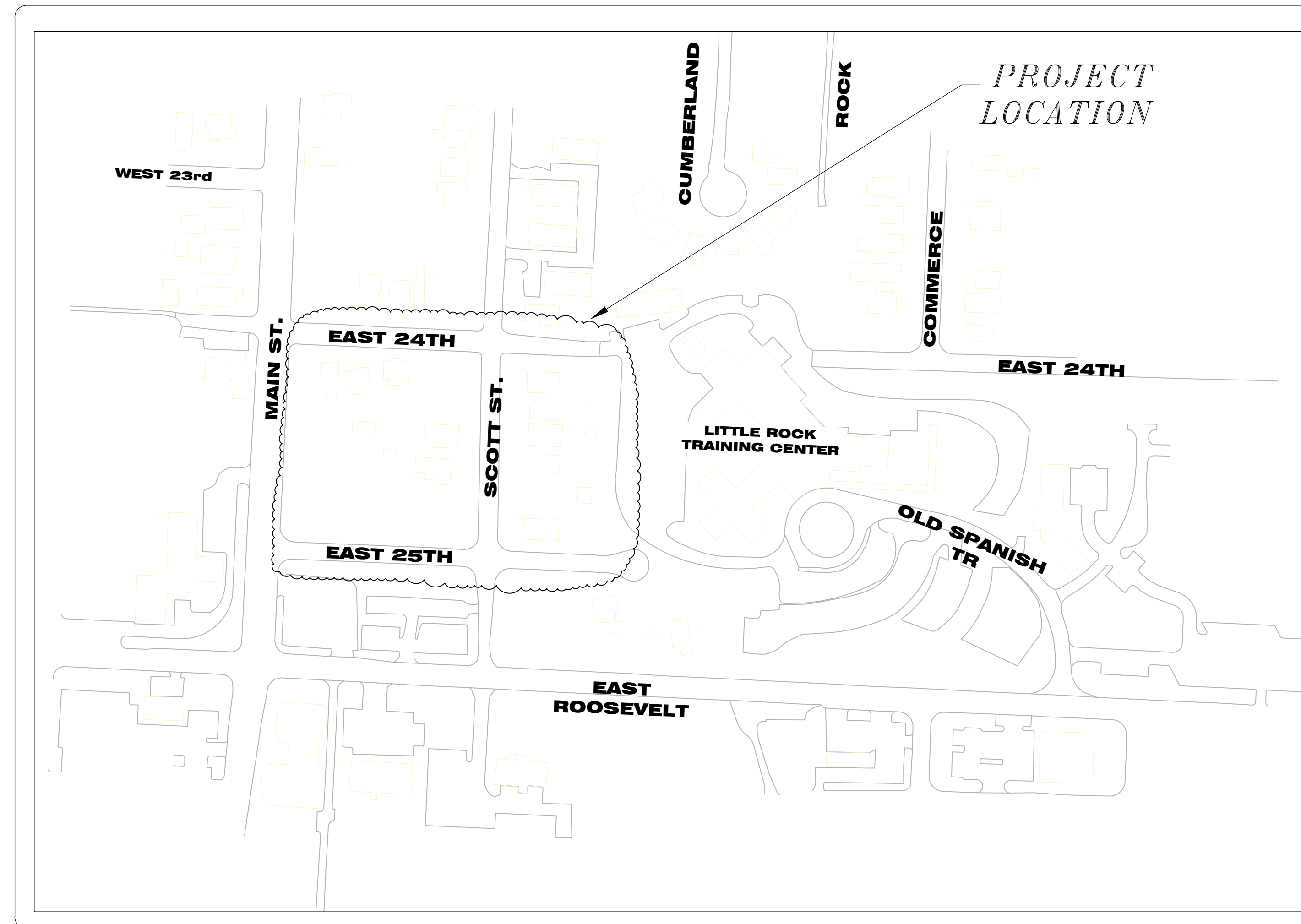


# 24th AND 25th STREET SIDEWALKS

## PROJECT LOCATION



PROJECT LOCATION - WARD 1



SHEET NO.	TITLE
C1	COVER SHEET
C2	GEN NOTES & QUANTITIES
C3	PLAN VIEW 24TH ST
C4	PLAN VIEW 25TH ST
C5	PLAN VIEW SCOTT ST
C6	PLAN VIEW OVERALL



**ARPA FUNDS**

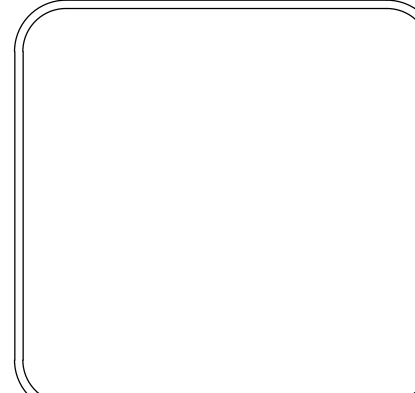
DEPARTMENT OF PUBLIC WORKS  
 CIVIL ENGINEERING  
 701 WEST MARKHAM STREET  
 LITTLE ROCK, ARKANSAS 72201



REVISIONS	DATE

CITY OF LITTLE ROCK, ARKANSAS  
 24th AND 25th STREET SIDEWALKS  
 COVER SHEET

DEPARTMENT OF PUBLIC WORKS  
 CIVIL ENGINEERING  
 701 W. MARKHAM  
 LITTLE ROCK, ARKANSAS 72201



DRAWN BY
DESIGNED
CHECKED
DATE 05-14-2024
SCALE
PROJECT NO. CLR #??
SHEET NO. C1

<b>CLR PROJECT</b>			
24TH & 25TH ST SIDEWALK ESTIMATE			
2-May-24			
ITEM #	ITEM DESCRIPTION	UNIT	QUANTITY
2.01	SITE PREPARATION	LS	1
7.06	CONCRETE DRIVEWAY (6" THICK STANDARD FINISH)	SF	1200
8.01	CONCRETE CURB & GUTTER	LF	280
9.04	CONCRETE SIDEWALK (4" THICK)	SF	5510
9.40	CONCRETE SIDEWALK "TURN UP" WALL (PW-44)(PW-45)	SF	100
14.01	SOLID SODDING BERMUDA (INCLUDES 4" OF TOPSOIL)	SY	700
16.01	MAINTENACE OF TRAFFIC	LS	1
18.50	ACCESS RAMP	SF	465
19.01	FINAL CLEAN UP	LS	1
24.20	TEMPORARY SEEDING	AC	0.05

**EXISTING**

- IRON ROD ○ IR
- PK NAIL ○ PK
- R.R. SPIKE ○ RR(Sp)
- CONC. MONUMENT □ CM
- WATER VALVE ☒ WV
- WATER METER □ WM
- FIRE HYDRANT ☒ FH
- GAS METER □ GM
- GAS VALVE ⊗ GV
- CLEAN-OUT ○ CO
- GUARD POST (BOLLARD) ● GP
- SIGN POST
- BENCHMARK
- STORM SEWER MANHOLE (D)
- SANITARY SEWER MANHOLE (S)
- TELEPHONE MANHOLE (T)
- ELECTRIC MANHOLE (E)
- TELEPHONE BOX
- ELECTRIC BOX
- CABLE BOX
- UTILITY POLE
- GUY WIRE
- LIGHT POLE
- POST OR POLE (TYPE AS NOTED)
- MAILBOX
- DECIDUOUS TREE
- EVERGREEN/CONIFEROUS TREE
- BUSH
- PROPERTY LINE
- SETBACK LINE
- EASEMENT LINE
- CURB
- FENCE
- OVERHEAD ELECTRIC
- OVERHEAD TELEPHONE
- OVERHEAD CABLE
- UNDERGROUND TELEPHONE
- UNDERGROUND ELECTRIC
- UNDERGROUND CABLE
- WATER LINE
- SEWER LINE
- GAS LINE
- STORM SEWER/CULVERT
- EDGE OF WOODS
- CONTOUR LINE

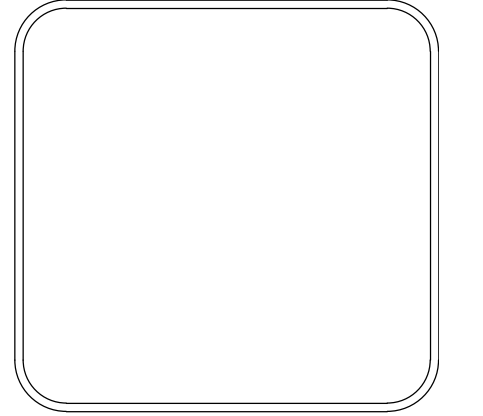
**PROPOSED**

- PROPOSED CONTOUR
- PROPOSED SPOT ELEVATION
- PROPOSED SPOT CURB ELEVATION
- STORM SEWER - PIPE
- STORM SEWER - MITERED END SECTION
- STORM SEWER - GRATE INLET
- STORM SEWER - JUNCTION BOX
- STORM SEWER - FLARED END SECTION
- STORM SEWER - HEADWALL
- STORM SEWER - SINGLE WING
- STORM SEWER - DOUBLE WING
- STORM SEWER - AREA INLET
- GRADE BREAK LINE
- HIGH POINT
- LOW POINT
- CUT LINE
- FILL LINE
- SANITARY SEWER PIPE
- SANITARY SEWER MANHOLE
- PROPOSED CURB
- CONSTRUCTION - ENTRANCE/EXIT
- CHECK DAM
- DIVERSION BERM
- DOWNDRAIN STRUCTURE - TEMPORARY
- ROCK DAM
- SEDIMENT BARRIER - SILT FENCE
- SEDIMENT BARRIER - GRAVEL RING
- SEDIMENT BARRIER - BLOCK & GRAVEL
- SEDIMENT BARRIER - BLOCK
- TEMPORARY SEDIMENT BASIN
- SILT FENCE - TYPE A
- SILT FENCE - TYPE B
- SILT FENCE - TYPE C
- STORM DRAIN OUTLET PROTECTION
- SURFACE ROUGHENING
- DISTURBED AREA STABILIZATION - TEMPORARY STABILIZATION
- DISTURBED AREA STABILIZATION - TEMPORARY GRASSING
- DISTURBED AREA STABILIZATION - PERMANENT GRASSING
- MATTING/BLANKETS

REVISIONS	DATE

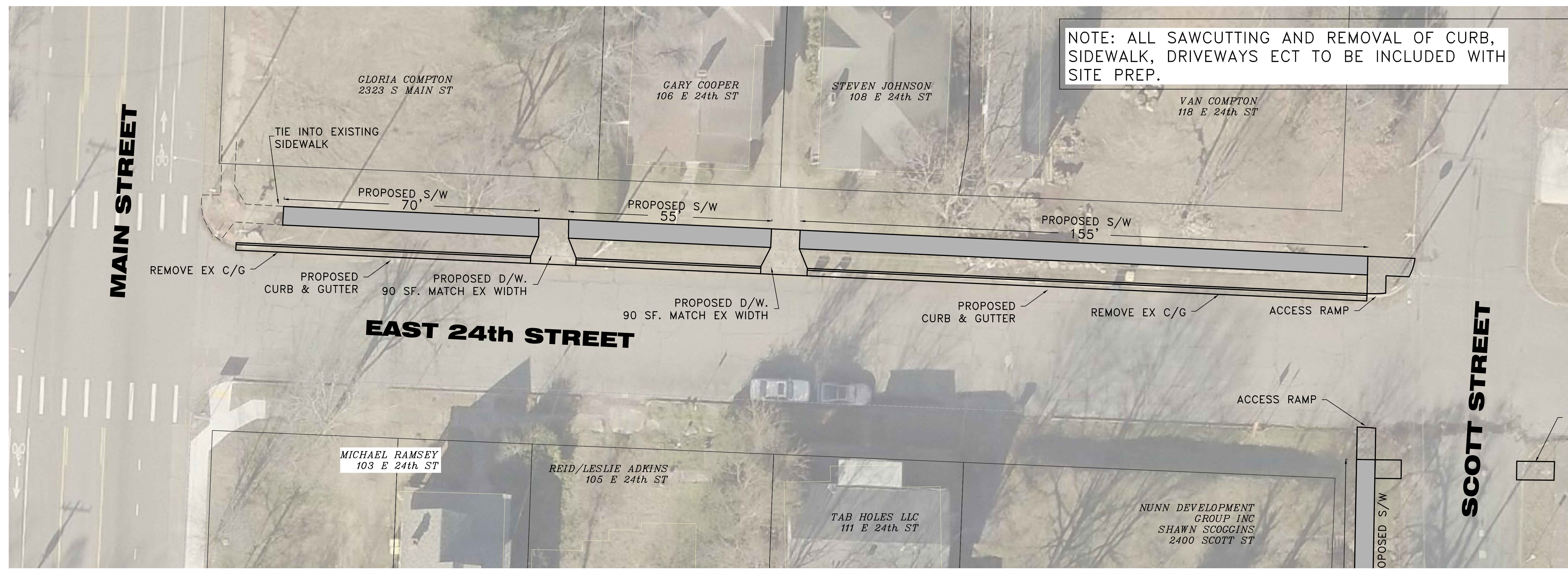
**CITY OF LITTLE ROCK, ARKANSAS**  
**24th AND 25th STREET SIDEWALKS**  
 GENERAL NOTES, LEGEND AND QUANTITIES

**DEPARTMENT OF PUBLIC WORKS**  
**CIVIL ENGINEERING**  
 701 W. MARKHAM  
 LITTLE ROCK, ARKANSAS 72201



<b>DRAWN BY</b>
<b>DESIGNED</b>
<b>CHECKED</b>
<b>DATE</b> 05-08-2024
<b>SCALE</b> N.T.S
<b>PROJECT NO.</b>
<b>SHEET NO.</b> C2

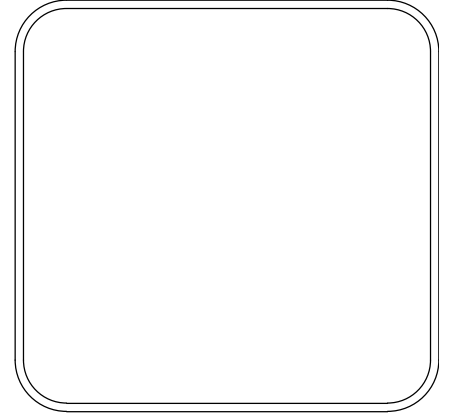
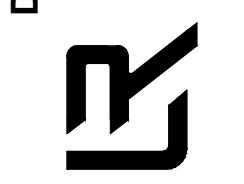




REVISIONS	DATE

CITY OF LITTLE ROCK, ARKANSAS  
 24th AND 25th STREET SIDEWALKS  
 24th STREET

DEPARTMENT OF PUBLIC WORKS  
 CIVIL ENGINEERING  
 701 W. MARKHAM  
 LITTLE ROCK, ARKANSAS 72201

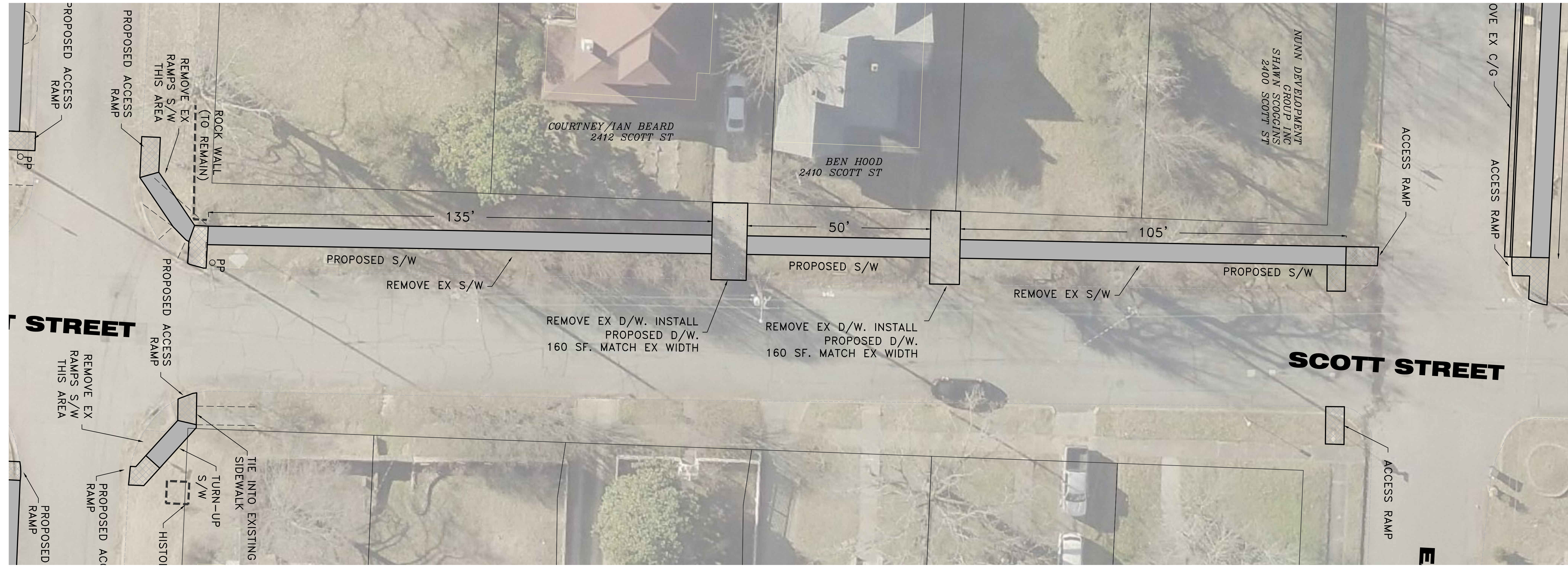


DRAWN BY  
 DESIGNED  
 CHECKED  
 DATE  
 05-08-2024  
 SCALE  
 1"=15'  
 PROJECT NO.  
 SHEET NO.  
 C3









NOTE: ALL SAWCUTTING AND REMOVAL OF CURB, SIDEWALK, DRIVEWAYS ECT TO BE INCLUDED WITH SITE PREP.

REVISIONS	DATE

CITY OF LITTLE ROCK, ARKANSAS  
 24th AND 25th STREET SIDEWALKS  
 SCOTT STREET

DEPARTMENT OF PUBLIC WORKS  
 CIVIL ENGINEERING  
 701 W. MARKHAM  
 LITTLE ROCK, ARKANSAS 72201

DRAWN BY  
 DESIGNED  
 CHECKED  
 DATE  
 05-08-2024  
 SCALE  
 1"=15'  
 PROJECT NO.  
 SHEET NO.  
 C5

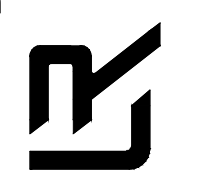




REVISIONS	DATE

CITY OF LITTLE ROCK, ARKANSAS  
 24th AND 25th STREET SIDEWALKS  
 OVERALL

DEPARTMENT OF PUBLIC WORKS  
 CIVIL ENGINEERING  
 701 W. MARKHAM  
 LITTLE ROCK, ARKANSAS 72201



DRAWN BY  
 DESIGNED  
 CHECKED  
 DATE  
 05-08-2024  
 SCALE  
 1"=15'  
 PROJECT NO.  
 SHEET NO.  
 C6