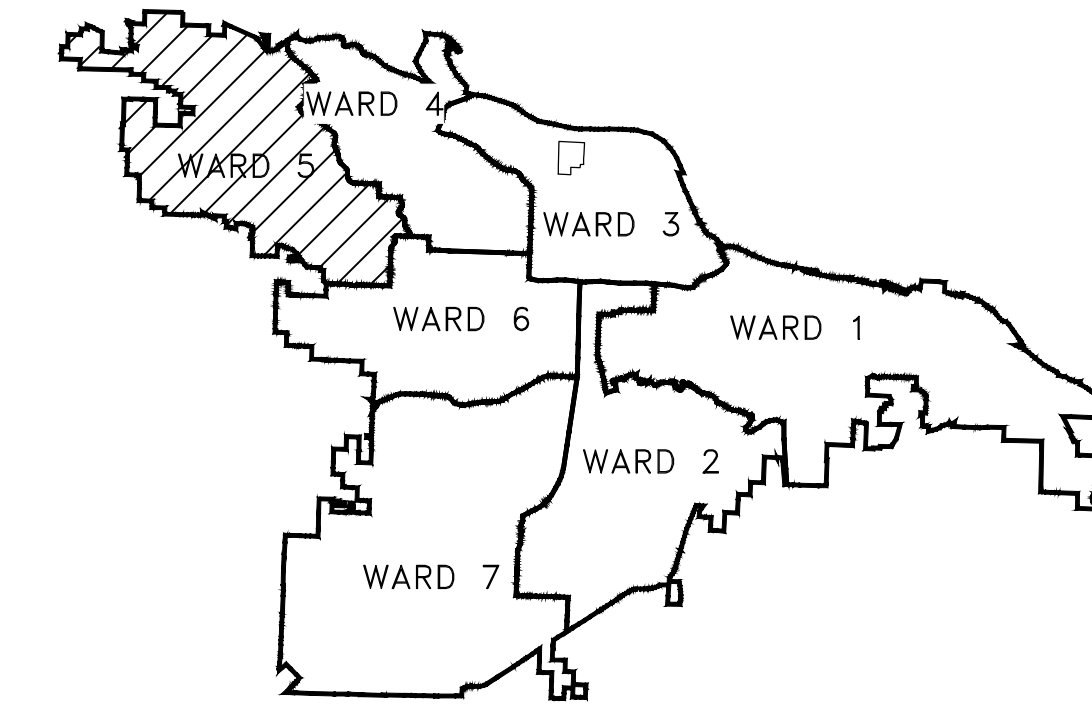
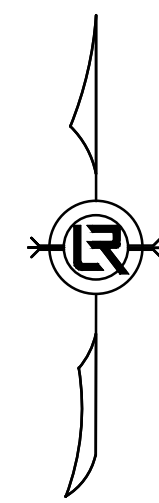
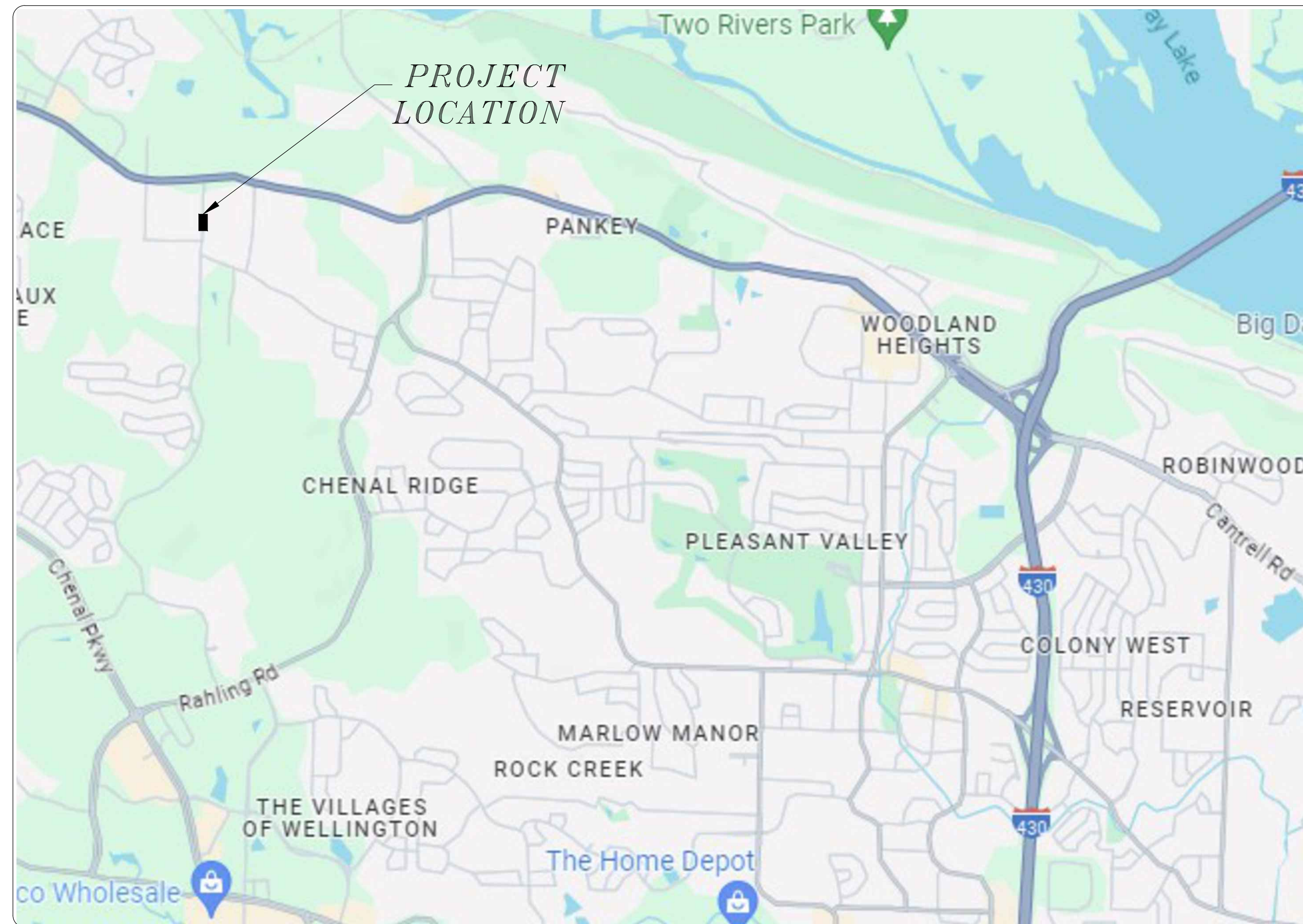


LAMARCHE DR - LUCKY LN SIDEWALKS

PROJECT LOCATION



PROJECT LOCATION - WARD 5



**2022-2024
BOND PROGRAM**

DEPARTMENT OF PUBLIC WORKS
CIVIL ENGINEERING
701 WEST MARKHAM STREET
LITTLE ROCK, ARKANSAS 72201

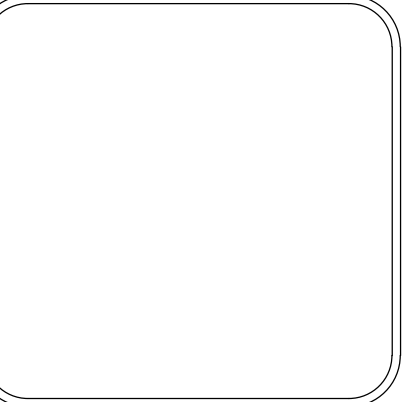
SHEET NO.	TITLE
C1	COVER SHEET
C2	GEN NOTES & QUANTITIES
C3	SITE PLAN



REVISIONS	DATE

CITY OF LITTLE ROCK, ARKANSAS
LAMARCHE DR. - LUCKY LN. SIDEWALKS
COVER SHEET

DEPARTMENT OF PUBLIC WORKS
CIVIL ENGINEERING
701 W. MARKHAM
LITTLE ROCK, ARKANSAS 72201



DRAWN BY
DESIGNED
CHECKED
DATE
08-02-2024
SCALE
1"=2000'
PROJECT NO.
CLR #??
SHEET NO.
C1

ITEM #	ITEM DESCRIPTION	UNIT	QUANTITY
2.01	SITE PREPARATION	LS	1
3.01	UNCLASSIFIED EXCAVATION	CY	12
8.03	CONCRETE CURB AND GUTTER (CLASS 3)	LF	20
9.04	CONCRETE SIDEWALK (4" THICK)	SF	1000
14.01	SOLID SODDING, BERMUDA (INCLUDES 4" OF TOPSOIL)	SY	300
16.01	MAINTENANCE OF TRAFFIC	LS	1
18.50	ACCESS RAMP	SF	300
19.01	FINAL CLEANUP	LS	1
719.12W	THERMOPLASTIC PAVEMENT MARKING WHITE (12")	LF	160
726.00	PEDESTRIAN SIGN (S1-1)	EA	4
726.00	PEDESTRIAN SIGN (W16-7P)	EA	4
726.00	PEDESTRIAN SIGN (S4-3P)	EA	4
726.00	PEDESTRIAN SIGN (R1-6A)	EA	4
729.01	CHANNEL POST SIGN SUPPROT (U-CHANNEL)	EA	4
729.01	CHANNEL POST SIGN SUPPORT (IN-STREET REBOUND ABLE)	EA	2



S1-1

W16-7P



S4-3P

R1-6A

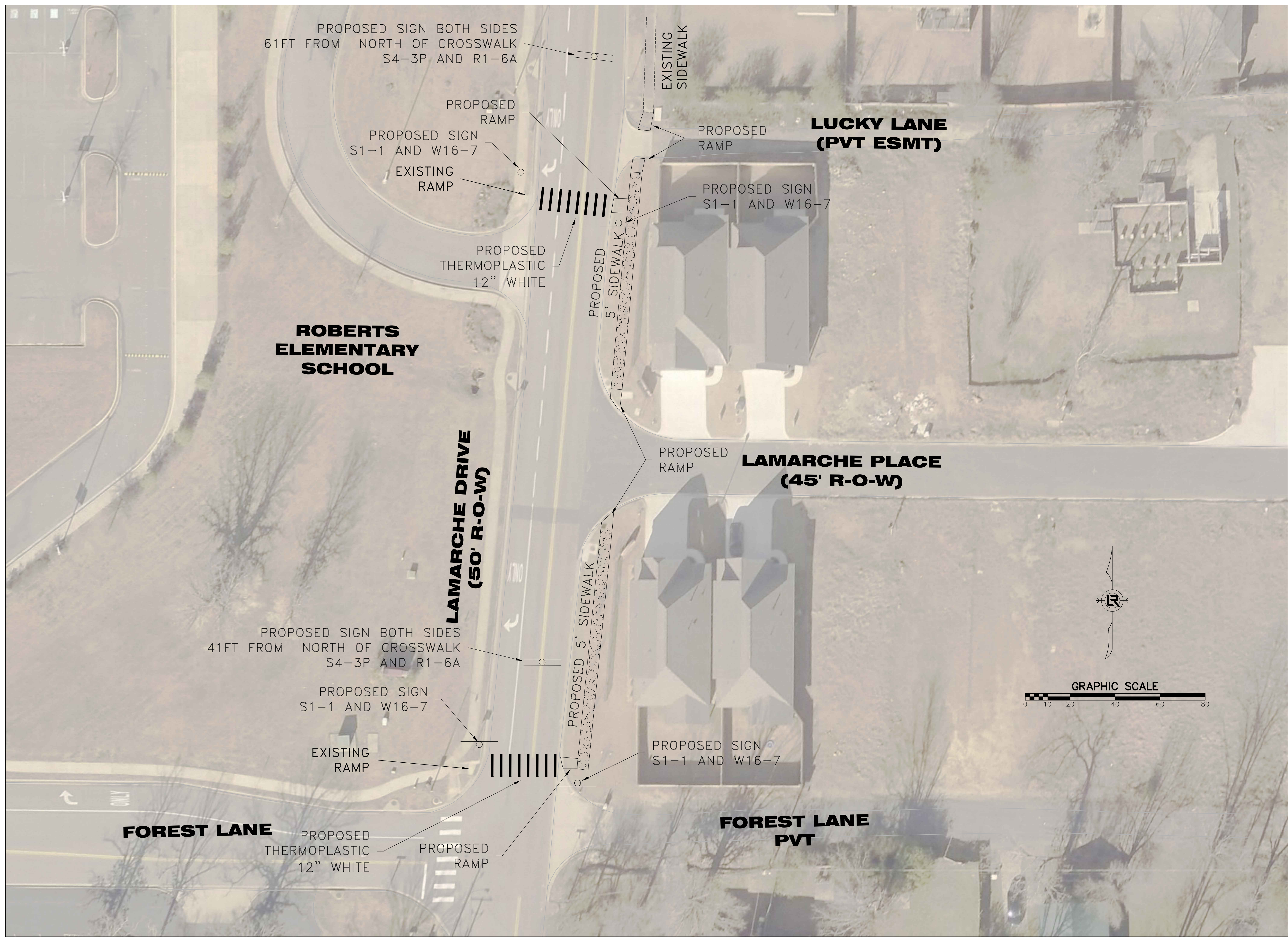
EXISTING		PROPOSED
IRON ROD	○ IR	PROPOSED CONTOUR
PK NAIL	○ PK	PROPOSED SPOT ELEVATION
R.R. SPIKE	○ RR(Sp)	PROPOSED SPOT CURB ELEVATION
CONC. MONUMENT	□ CM	STORM SEWER - PIPE
WATER VALVE	⊗ WV	STORM SEWER - MITERED END SECTION
WATER METER	□ WM	STORM SEWER - GRATE INLET
FIRE HYDRANT	⊕ FH	STORM SEWER - JUNCTION BOX
GAS METER	⊕ GM	STORM SEWER - FLARED END SECTION
GAS VALVE	⊕ GV	STORM SEWER - HEADWALL
CLEAN-OUT	○ CO	STORM SEWER - SINGLE WING
GUARD POST (BOLLARD)	• GP	STORM SEWER - DOUBLE WING
SIGN POST	+	STORM SEWER - AREA INLET
BENCHMARK	+	GRADE BREAK LINE
STORM SEWER MANHOLE	⊙	HIGH POINT
SANITARY SEWER MANHOLE	⊙	LOW POINT
TELEPHONE MANHOLE	⊙	CUT LINE
ELECTRIC MANHOLE	⊙	FILL LINE
TELEPHONE BOX	⊙	SANITARY SEWER PIPE
ELECTRIC BOX	⊙	SANITARY SEWER MANHOLE
CABLE BOX	⊙	PROPOSED CURB
UTILITY POLE	⊙	PROPOSED CONCRETE
GUY WIRE	⊙	CONSTRUCTION - ENTRANCE/EXIT
LIGHT POLE	⊙	CHECK DAM
POST OR POLE (TYPE AS NOTED)	⊙	DIVERSION BERM
MAILBOX	⊙	DOWNDRAIN STRUCTURE - TEMPORARY
DECIDUOUS TREE	⊙	ROCK DAM
EVERGREEN/CONIFEROUS TREE	⊙	SEDIMENT BARRIER - SILT FENCE
BUSH	⊙	SEDIMENT BARRIER - GRAVEL RING
PROPERTY LINE	---	SEDIMENT BARRIER - BLOCK & GRAVEL
SETBACK LINE	---	SEDIMENT BARRIER - BLOCK
EASEMENT LINE	---	TEMPORARY SEDIMENT BASIN
CURB	---	SILT FENCE - TYPE A
FENCE	---	SILT FENCE - TYPE B
OVERHEAD ELECTRIC	---	SILT FENCE - TYPE C
OVERHEAD TELEPHONE	---	STORM DRAIN OUTLET PROTECTION
OVERHEAD CABLE	---	SURFACE ROUGHENING
UNDERGROUND TELEPHONE	---	DISTURBED AREA STABILIZATION -TEMPORARY STABILIZATION
UNDERGROUND ELECTRIC	---	DISTURBED AREA STABILIZATION -TEMPORARY GRASSING
UNDERGROUND CABLE	---	DISTURBED AREA STABILIZATION -PERMANENT GRASSING
WATER LINE	---	MATTING/BLANKETS
GAS LINE	---	
STORM SEWER/CULVERT	---	
EDGE OF WOODS	---	
CONTOUR LINE	---	

REVISIONS	DATE

CITY OF LITTLE ROCK, ARKANSAS
LAMARCHE DR. - LUCKY LN. SIDEWALKS
GENERAL NOTES, LEGEND AND QUANTITIES

DEPARTMENT OF PUBLIC WORKS
CIVIL ENGINEERING
701 W. MARKHAM
LITTLE ROCK, ARKANSAS 72201

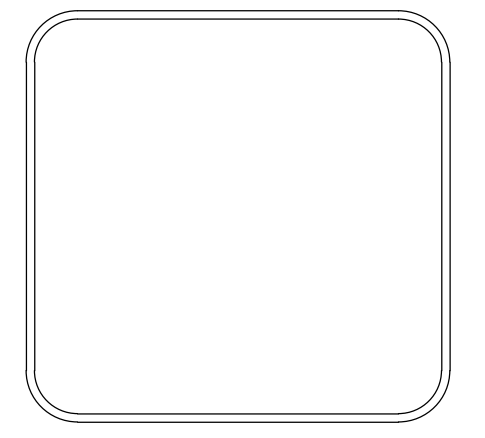
DRAWN BY
DESIGNED
CHECKED
DATE
08-02-2024
SCALE
N.T.S
PROJECT NO.
SHEET NO.
C2



REVISIONS	DATE

CITY OF LITTLE ROCK, ARKANSAS
 LAMARCHE DR. - LUCKY LN. SIDEWALKS
 SITE PLAN

DEPARTMENT OF PUBLIC WORKS
 CIVIL ENGINEERING
 701 W. MARKHAM
 LITTLE ROCK, ARKANSAS 72201



DRAWN BY
 DESIGNED
 CHECKED
 DATE
 08-02-2024
 SCALE
 1" = 20'
 PROJECT NO.

SHEET NO.
 C3