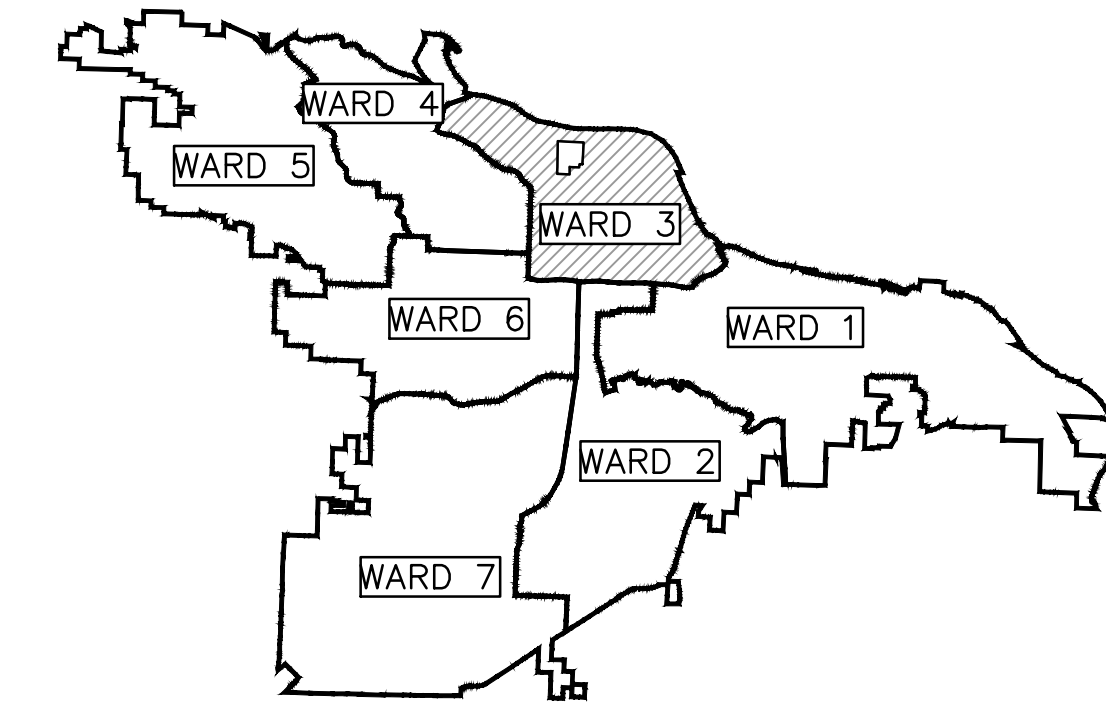


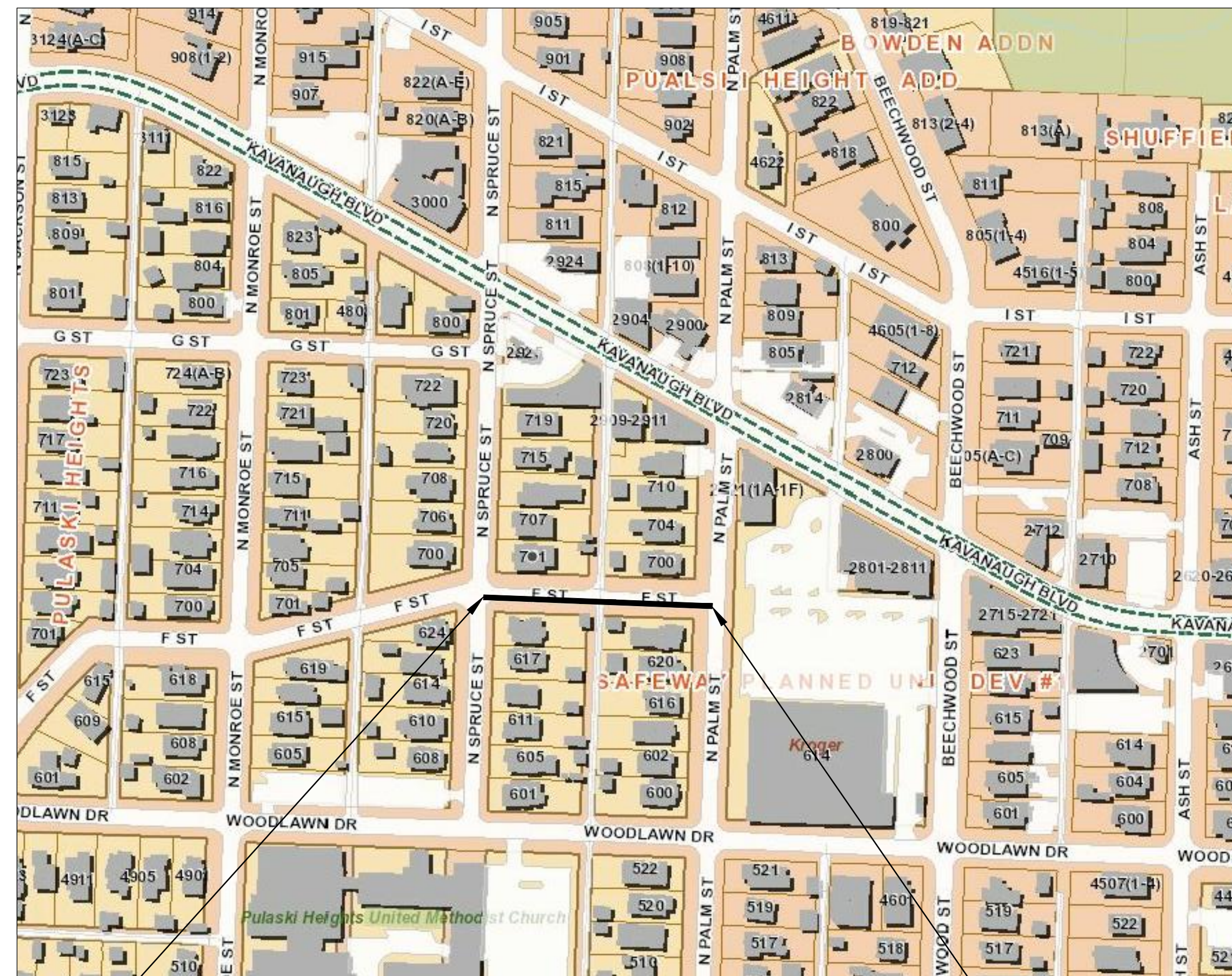
CLR PROJECT 03-18-ST-56 "F" STREET (SPRUCE TO PALM) RECONSTRUCTION



PROJECT LOCATION – WARD 3

INDEX OF SHEETS:

- C1 COVER SHEET
 - C2 GENERAL NOTES, LEGEND AND QUANTITIES
 - C3 TYPICAL SECTIONS
 - C4 EXISTING CONDITIONS
 - C5 PLAN & PROFILE
 - C6 DRIVEWAY DETAILS
 - C7 - C8 CROSS SECTIONS
 - C9 PROJECT LAYOUT
 - C10 EROSION CONTROL
- ARDOT STANDARD DRAWING CDP-1



PROJECT LOCATION

BEGIN PROJECT
"F" STREET STREET
CL STA 10+10.37
NORTHING = 154536.1861
EASTING= 1214247.3423

END PROJECT
"F" STREET
CL STA 13+49.10
NORTHING = 154524.3085
EASTING = 1214585.8645

DEPARTMENT OF PUBLIC WORKS
CIVIL ENGINEERING
701 WEST MARKHAM STREET
LITTLE ROCK, ARKANSAS 72201



**2023-2025
BOND PROGRAM**



SURVEYOR:



4701 NORTHSORE DRIVE
NORTH LITTLE ROCK, AR 72118
PHONE: 501-376-3633
WWW.GARVERUSA.COM

ENGINEER OF RECORD:



2020 WEST 3RD STREET, SUITE 504
LITTLE ROCK, AR 72205
PHONE: 501-215-5807 FAX:501-227-8302
WWW.ICONICCG.COM



REVISIONS	DATE

CITY OF LITTLE ROCK, ARKANSAS
"F" STREET (SPRUCE TO PALM) RECONSTRUCTION
COVER SHEET

DEPARTMENT OF PUBLIC WORKS
CIVIL ENGINEERING
701 W. MARKHAM
LITTLE ROCK, ARKANSAS 72201

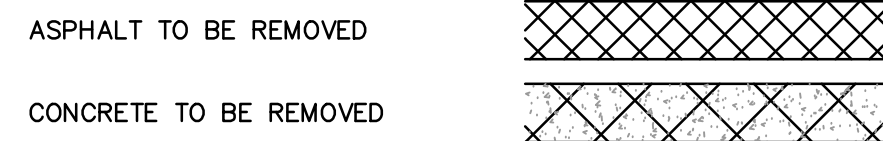


DRAWN BY CV
DESIGNED CV
CHECKED JB
DATE 8/6/2024
SCALE N.T.S.
PROJECT NO. CLR # 03-18-ST-56
SHEET NO. C1

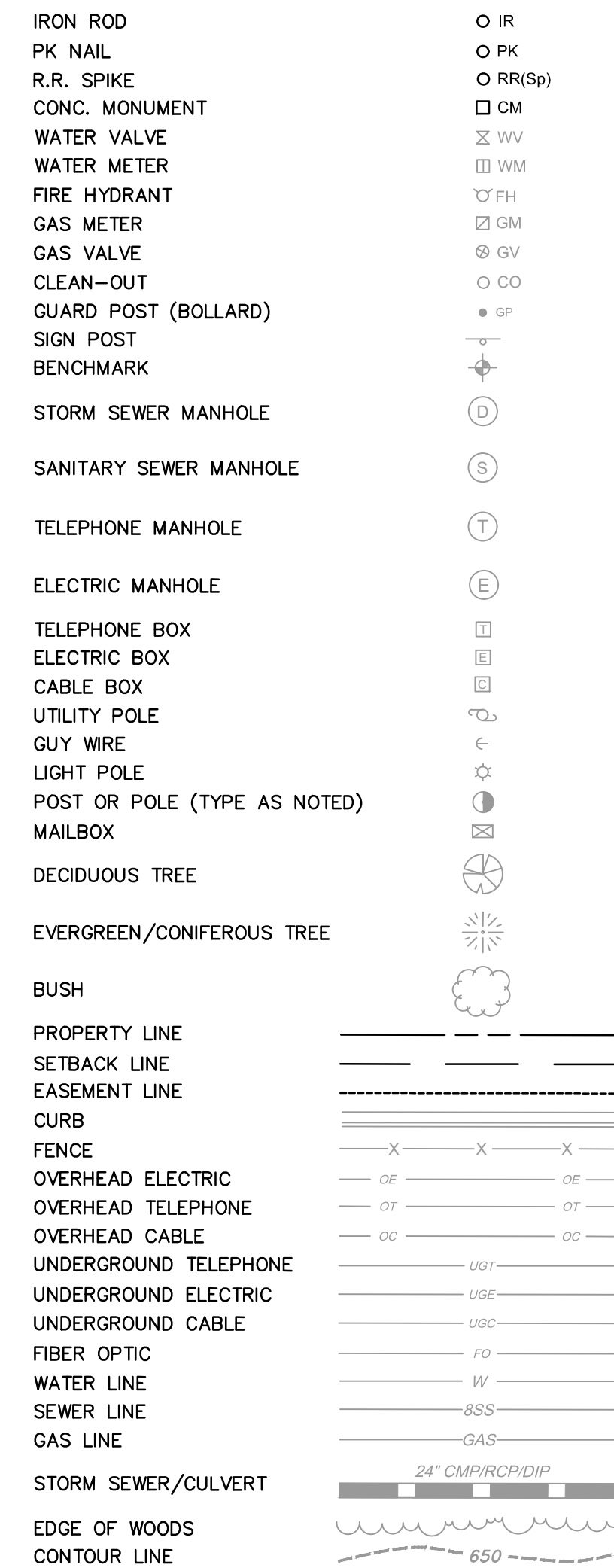
REVISIONS	DATE

CLR PROJECT 03-18-ST-56			
ITEM #	ITEM DESCRIPTION	UNIT	QUANTITY
2.01	SITE PREPARATION	LS	1
3.01	UNCLASSIFIED EXCAVATION	CY	470
3.02	COMPACTED EMBANKMENT	CY	58
4.01	AGGREGATE BASE COURSE (CLASS 7)	TON	258
5.01	TACK COAT	GAL	59
6.01	ACHM SURFACE COURSE	TON	146
7.06	CONCRETE DRIVEWAY (6" THICK), STANDARD FINISH	SF	811
7.08	ALLEY TURNOUT (8" THICK)	SF	608
8.03	CONCRETE CURB & GUTTER (CLASS 3)	LF	531
9.04	CONCRETE SIDEWALK, 4" THICK	SF	1193
10.01	JUNCTION BOX (5')	EA	1
10.01A	JUNCTION BOX (6')	EA	1
10.05	CURB INLET - 5' BOX	EA	4
10.05	CURB INLET - 5' BOX - PW2	EA	1
10.07	WING 3' EXTENSION	EA	7
11.40	CONCRETE DITCH PAVING (4")	SF	173
13.12S	STORM DRAIN PIPE, 12" (SIDE)	LF	8
13.12C	STORM DRAIN PIPE, 15" (CROSS)	LF	33
13.12C	STORM DRAIN PIPE, 18" (CROSS)	LF	27
13.24S	STORM DRAIN PIPE, 18" (SIDE)	LF	23
13.36S	STORM DRAIN PIPE, 30" (SIDE)	LF	163
13.36C	STORM DRAIN PIPE, 36" (CROSS)	LF	29
13.36S	STORM DRAIN PIPE, 36" (SIDE)	LF	145
13.61	TIE INTO EXISTING JUNCTION BOX	EA	1
13.62	TIE INTO EXISTING CONCRETE PIPE	EA	2
14.01	SOLID SODDING (BERMUDA) (INCLUDES 4" TOPSOIL)	SY	515
16.01	MAINTENANCE OF TRAFFIC	LS	1
18.50	ACCESS RAMP- TYPE 3	SF	200
19.01	FINAL CLEAN-UP	LS	1
24.06	SEDIMENT BARRIER, SILT FENCE (SD1)	EA	7
24.09	SEDIMENT BARRIER, BLOCK (SD4)	EA	6
24.11	SILT FENCE - TYPE A (SFA)	LF	720
24.02	CHECK DAM (CD)	CY	2
26.01	TRENCH & EXCAVATION SAFETY	LS	1
606.18	FLARED END SECTION, 18" SIDE DRAIN	EA	1
SP	SANITARY SEWER MANHOLE ADJUSTMENT	EA	1
SP	AS-BUILT SURVEY OF DRAINAGE SYSTEM	EA	1

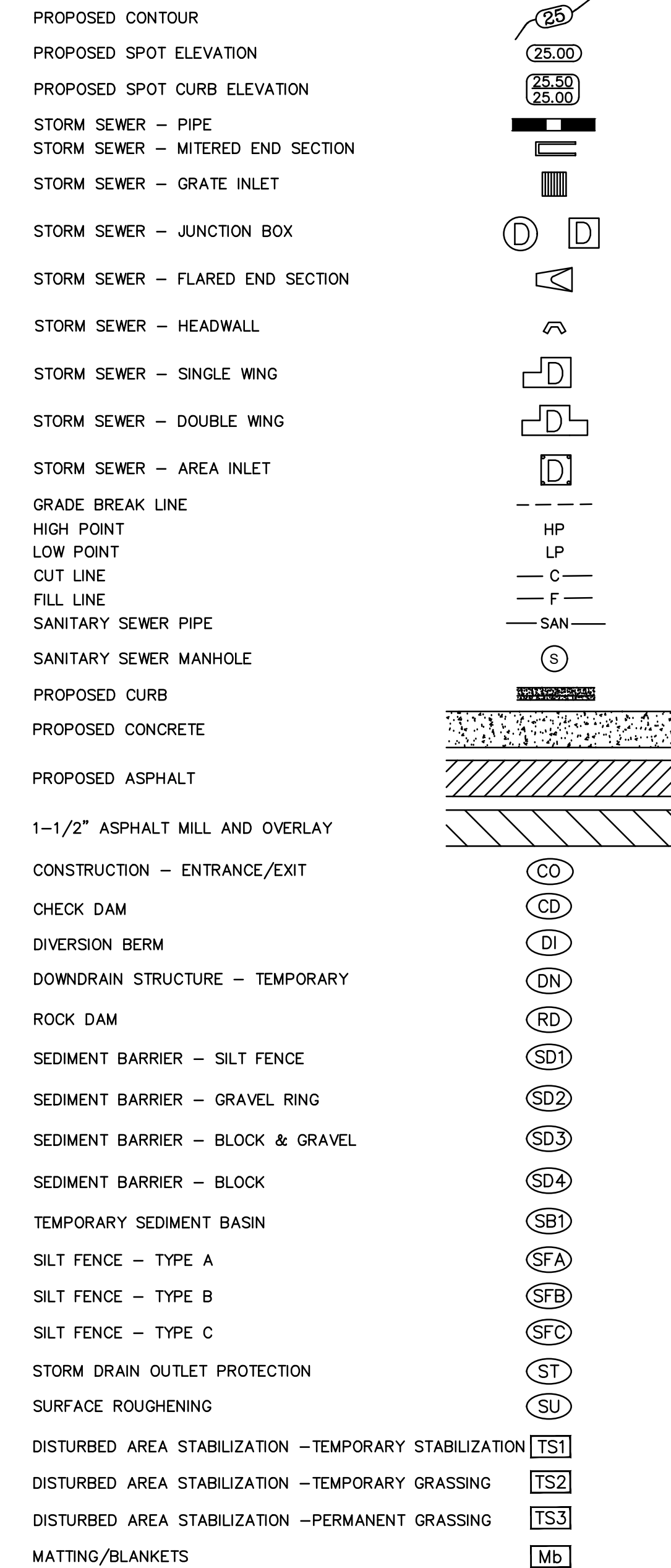
DEMO



EXISTING



PROPOSED



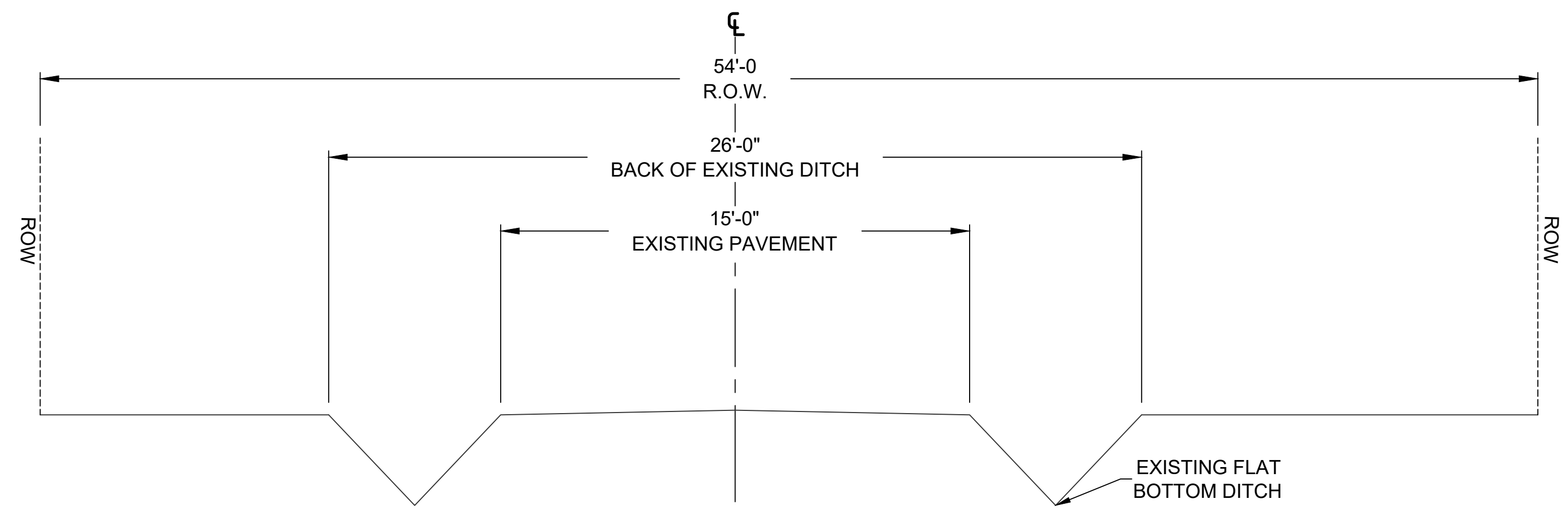
CITY OF LITTLE ROCK, ARKANSAS
"F" STREET (SPRUCE TO PALM) RECONSTRUCTION
GENERAL NOTES, LEGEND AND QUANTITIES

DEPARTMENT OF PUBLIC WORKS
 CIVIL ENGINEERING
 701 W. MARKHAM
 LITTLE ROCK, ARKANSAS 72201

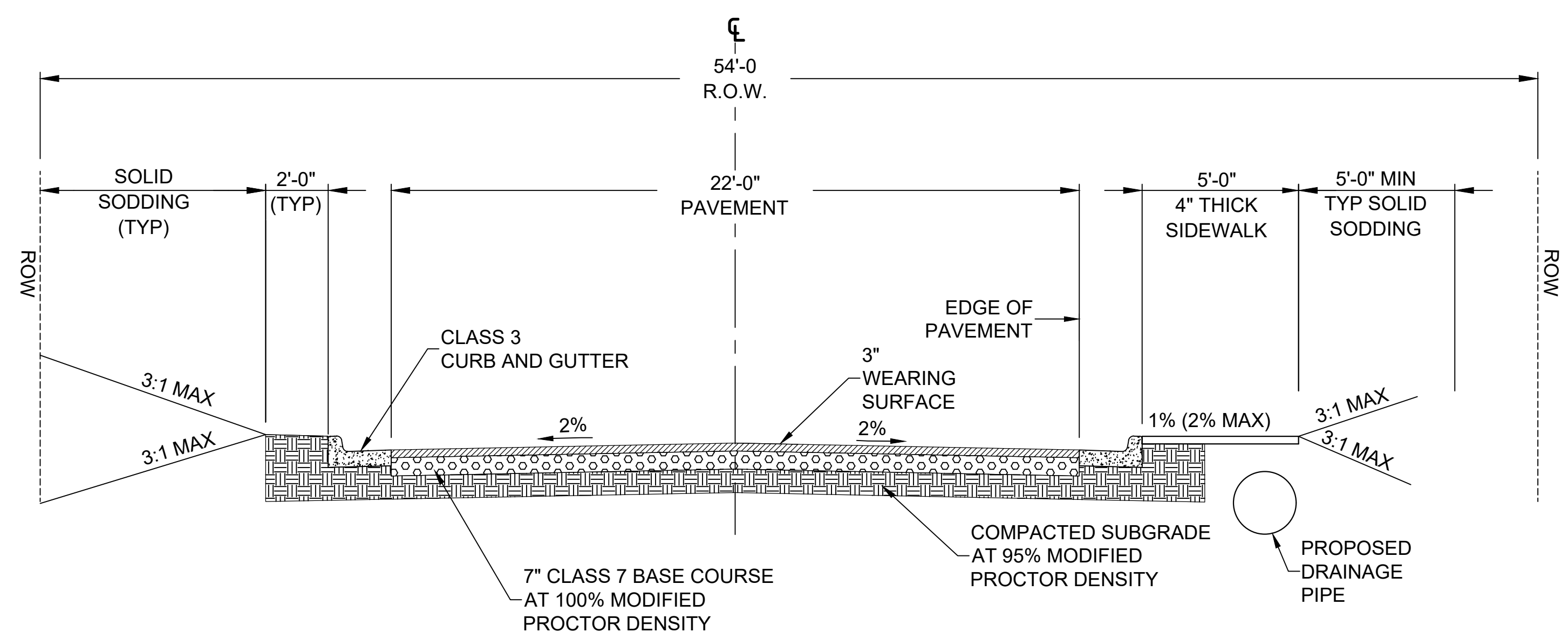
STATE OF ARKANSAS
 LICENSED PROFESSIONAL ENGINEER
 No. 21648
 8/6/2024

DRAWN BY	CV
DESIGNED	CV
CHECKED	JB
DATE	8/6/2024
SCALE	N.T.S.
PROJECT NO.	CLR # 03-18-ST-56
SHEET NO.	C2

REVISIONS	DATE



"F" STREET EXISTING TYPICAL SECTION



"F" STREET PROPOSED TYPICAL SECTION

STA 10+10.37 TO STA 13+49.10

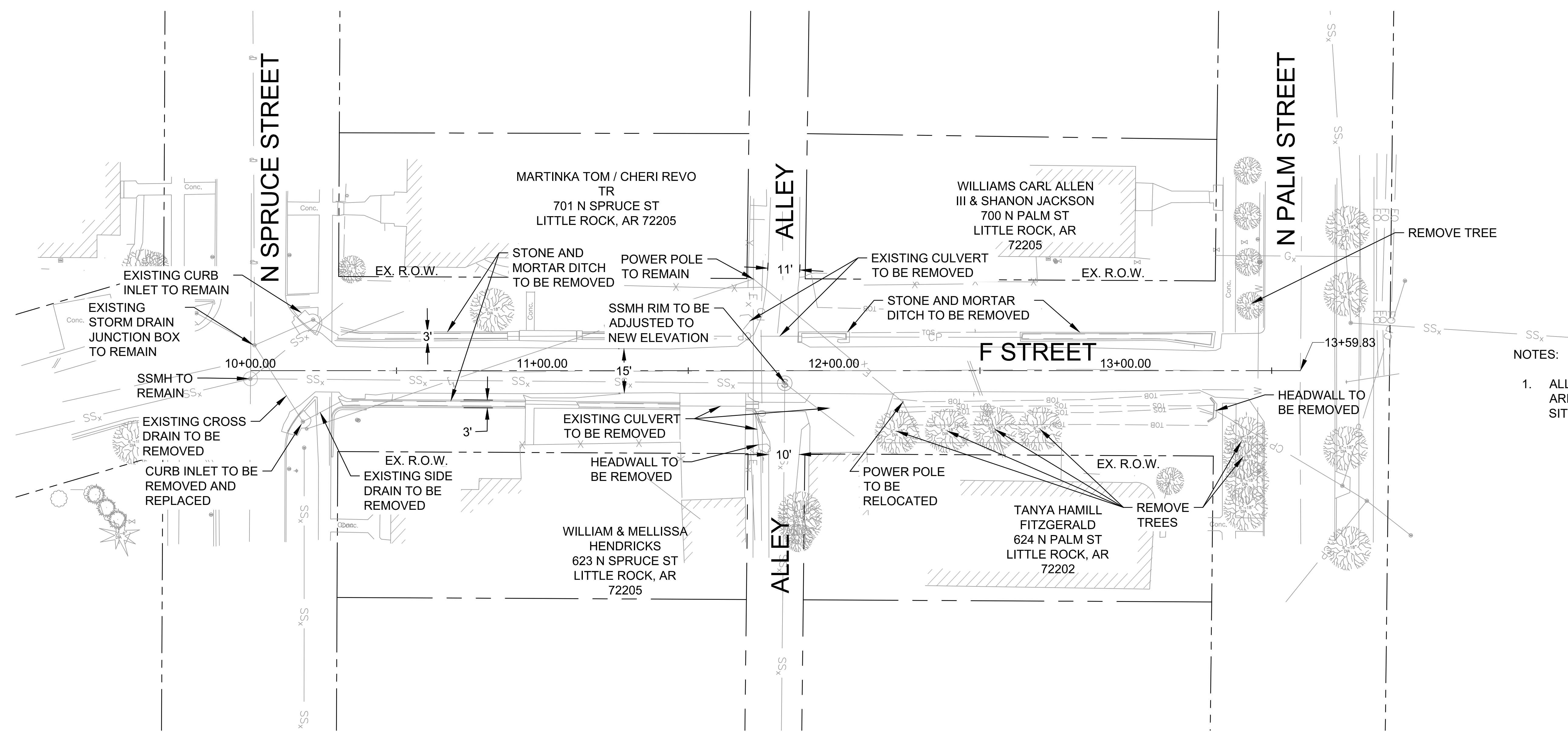
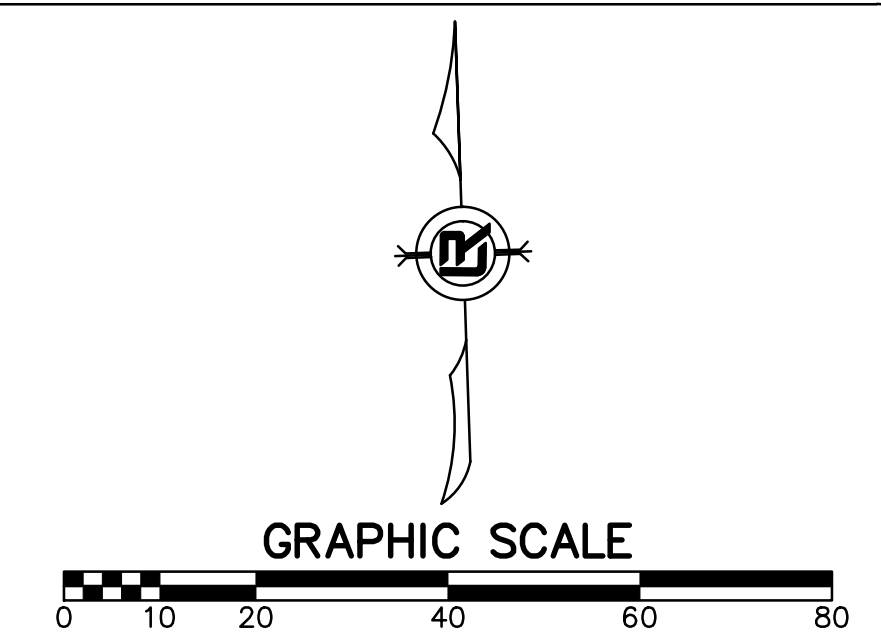
CITY OF LITTLE ROCK, ARKANSAS
 "F" STREET (SPRUCE TO PALM) RECONSTRUCTION
 TYPICAL SECTIONS

DEPARTMENT OF PUBLIC WORKS
 CIVIL ENGINEERING
 701 W. MARKHAM
 LITTLE ROCK, ARKANSAS 72201

STATE OF ARKANSAS
 LICENSED PROFESSIONAL ENGINEER
 No. 21648
 8/6/2024

DRAWN BY CV
 DESIGNED CV
 CHECKED JB
 DATE 8/6/2024
 SCALE N.T.S.
 PROJECT NO. CLR # 03-18-ST-56
 SHEET NO. C3

REVISIONS	DATE



NOTES:

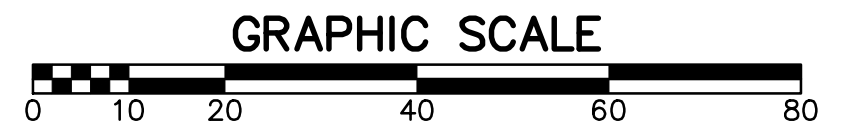
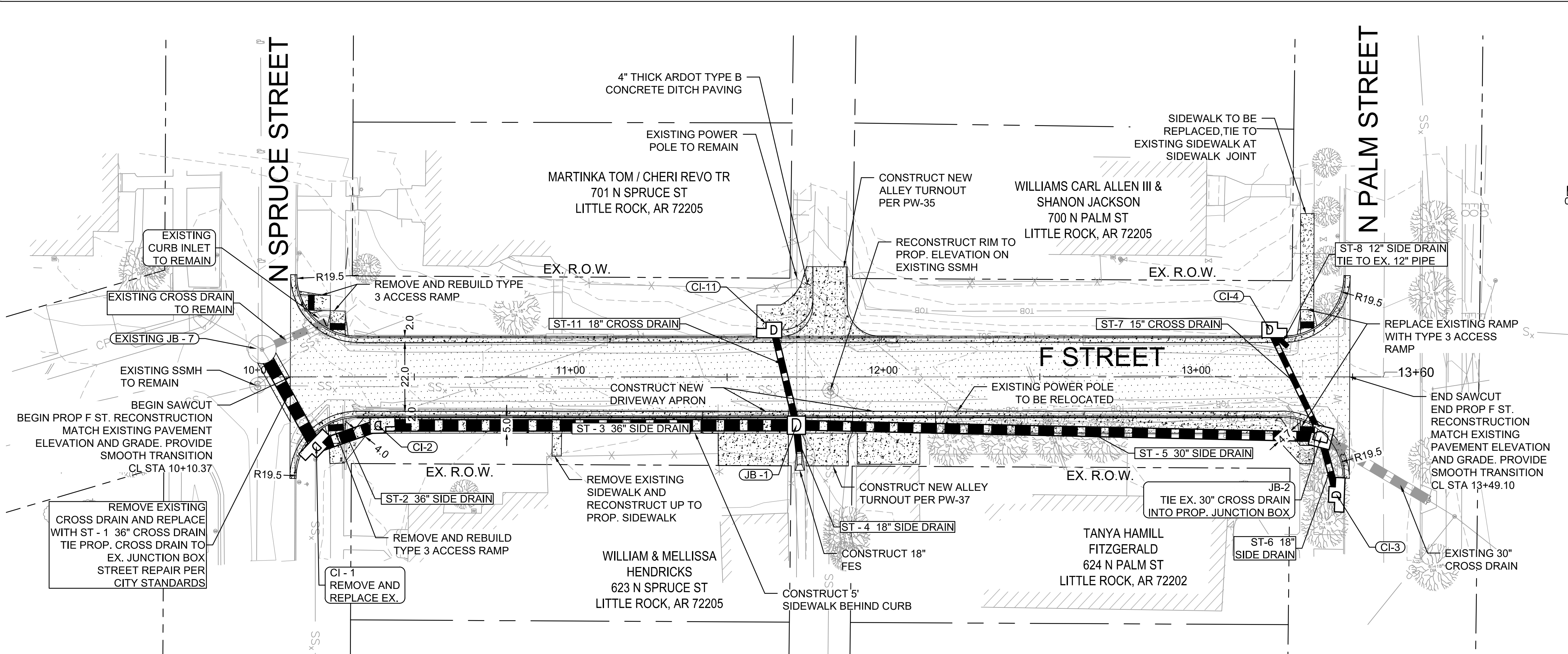
1. ALL REMOVAL ITEMS ARE SUBSIDIARY TO SITE PREPARATION.

CITY OF LITTLE ROCK, ARKANSAS
 "F" STREET (SPRUCE TO PALM) RECONSTRUCTION
 EXISTING CONDITIONS

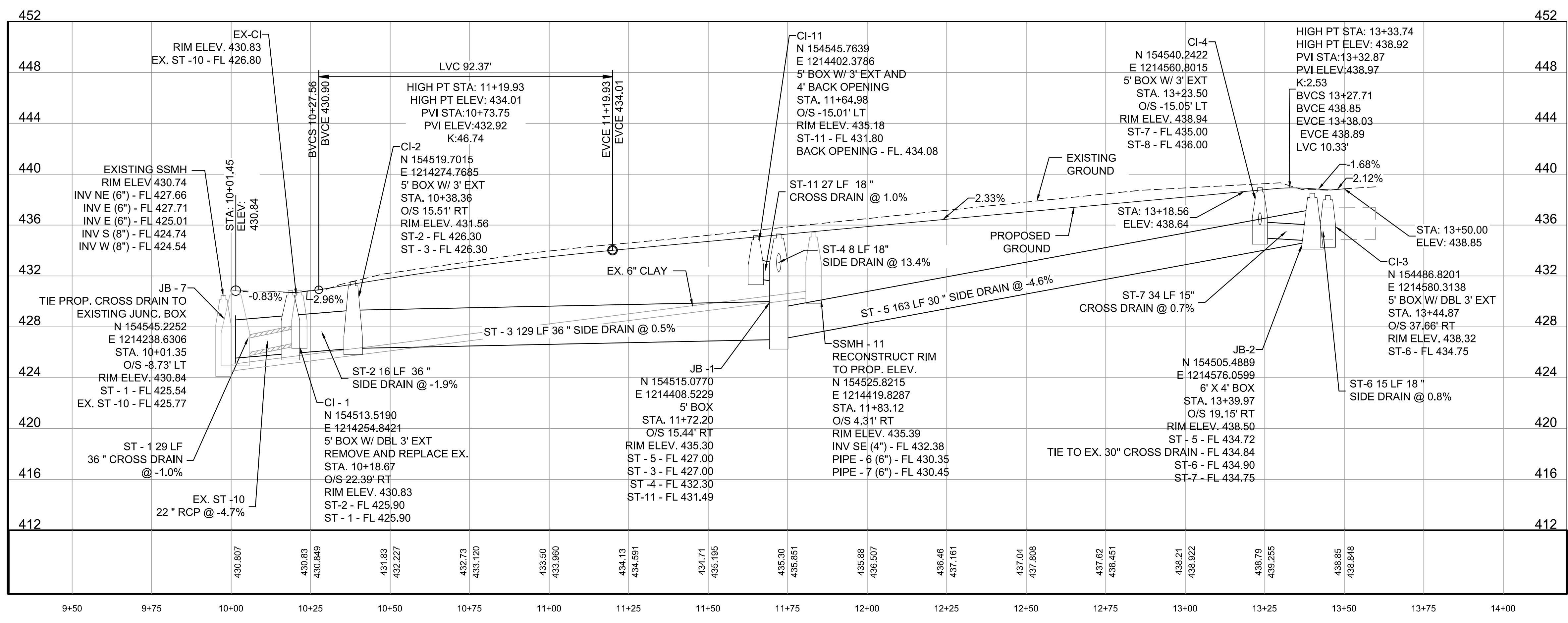
DEPARTMENT OF PUBLIC WORKS
 CIVIL ENGINEERING
 701 W. MARKHAM
 LITTLE ROCK, ARKANSAS 72201

STATE OF ARKANSAS
 LICENSED PROFESSIONAL ENGINEER
 No. 21648
 8/6/2024

DRAWN BY	CV
DESIGNED	CV
CHECKED	JB
DATE	8/6/2024
SCALE	1" = 20'
PROJECT NO.	CLR # 03-18-ST-56
SHEET NO.	C4



- NOTES:
- REMOVAL OF EXISTING PIPE UNDER DRIVEWAY IS SUBSIDIARY TO SITE PREPARATION. REFER TO EXISTING CONDITIONS SHEET FOR ITEMS TO BE REMOVED OR RELOCATED.
 - REFER TO CITY OF LITTLE ROCK STANDARD DETAILS FOR DRAINAGE DETAILS.
 - FOR CI-11 REFER TO CITY OF LITTLE ROCK STANDARD DETAIL PW-2 INLET W/ BACK OPENING FOR SURFACE WATER.
 - FOR CURB AND GUTTER DETAILS REFER TO CITY OF LITTLE ROCK STANDARD DETAIL PW-29 CURB & GUTTER SECTIONS RESIDENTIAL & COLLECTOR STREETS.



REVISIONS DATE

CITY OF LITTLE ROCK, ARKANSAS

"F" STREET (SPRUCE TO PALM) RECONSTRUCTION

PLAN AND PROFILE

DEPARTMENT OF PUBLIC WORKS

CIVIL ENGINEERING

701 W. MARKHAM

LITTLE ROCK, ARKANSAS 72201

STATE OF ARKANSAS

LICENSED PROFESSIONAL ENGINEER

No. 21648

8/6/2024

DRAWN BY CV

DESIGNED CV

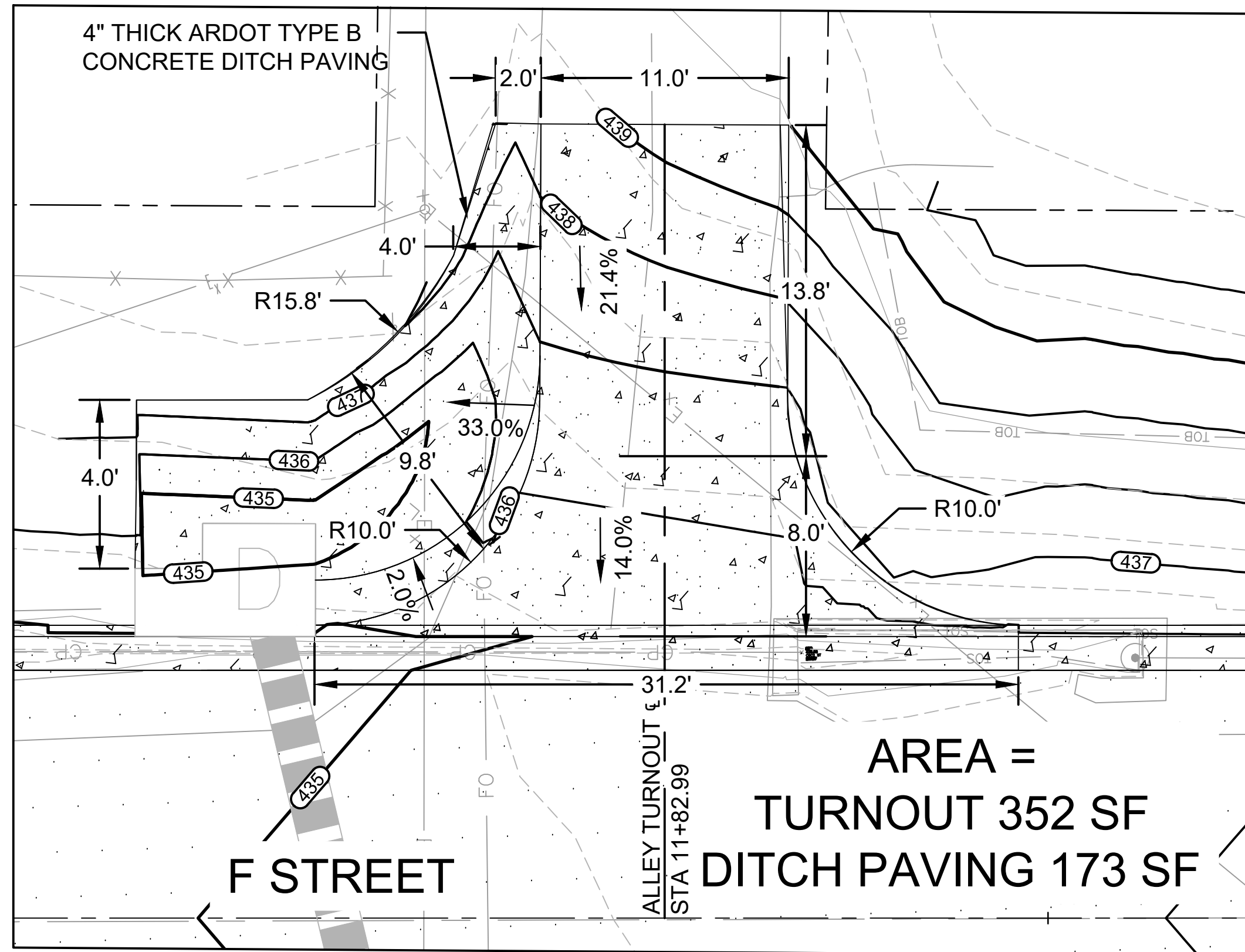
CHECKED JB

DATE 8/6/2024

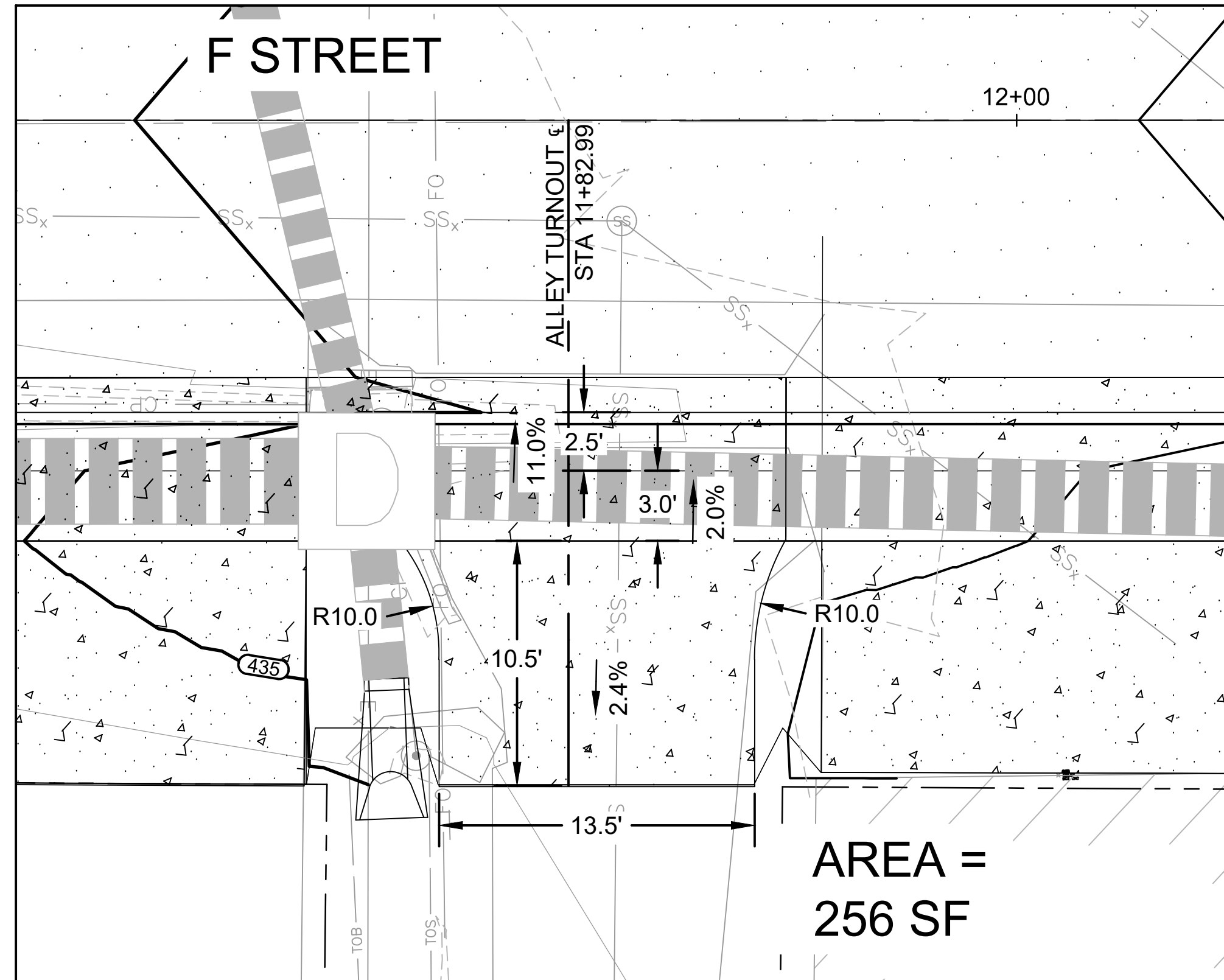
SCALE 1" = 20' H, 1" = 5' V

PROJECT NO. CLR #03-18-ST-56

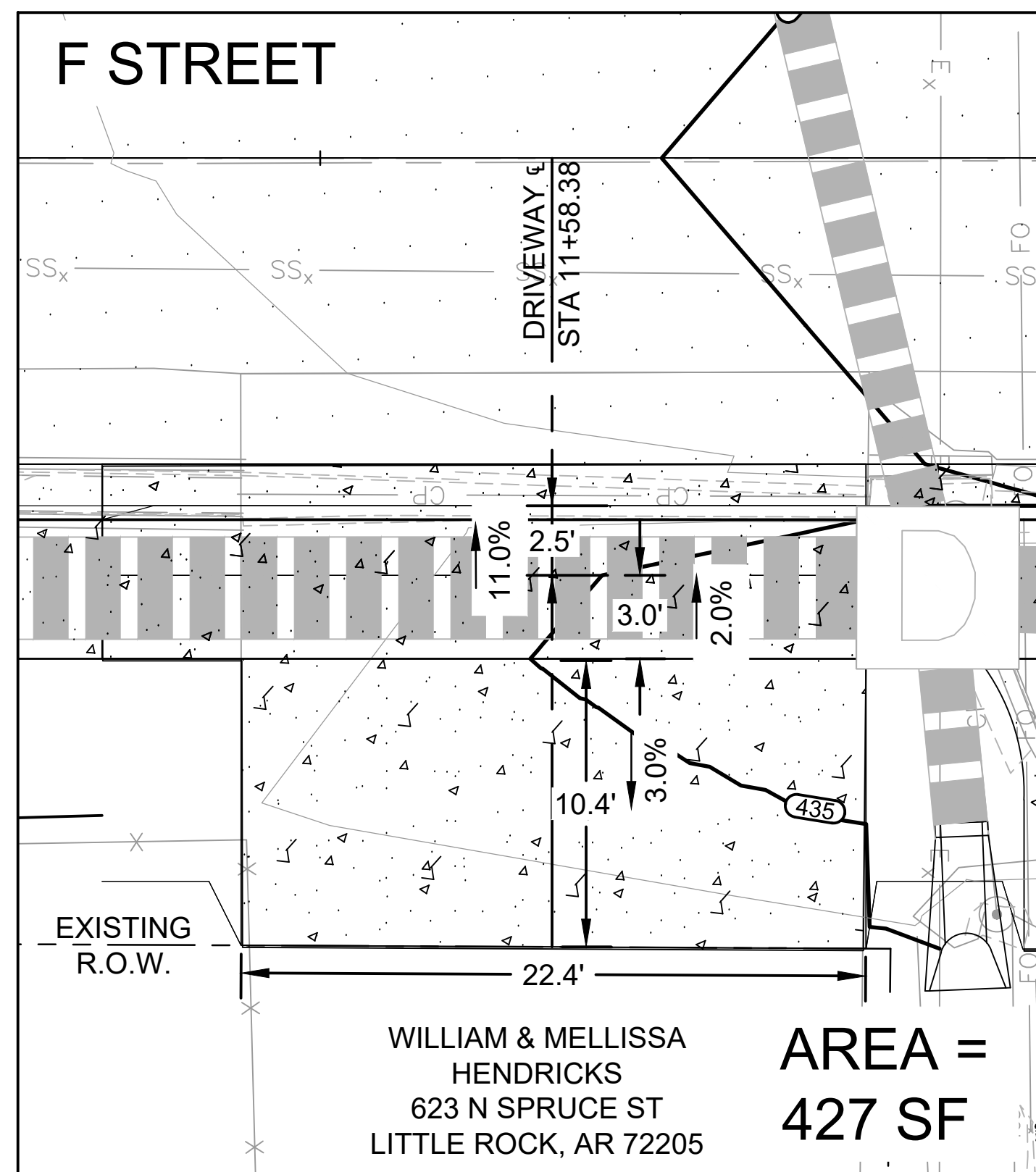
SHEET NO. C5



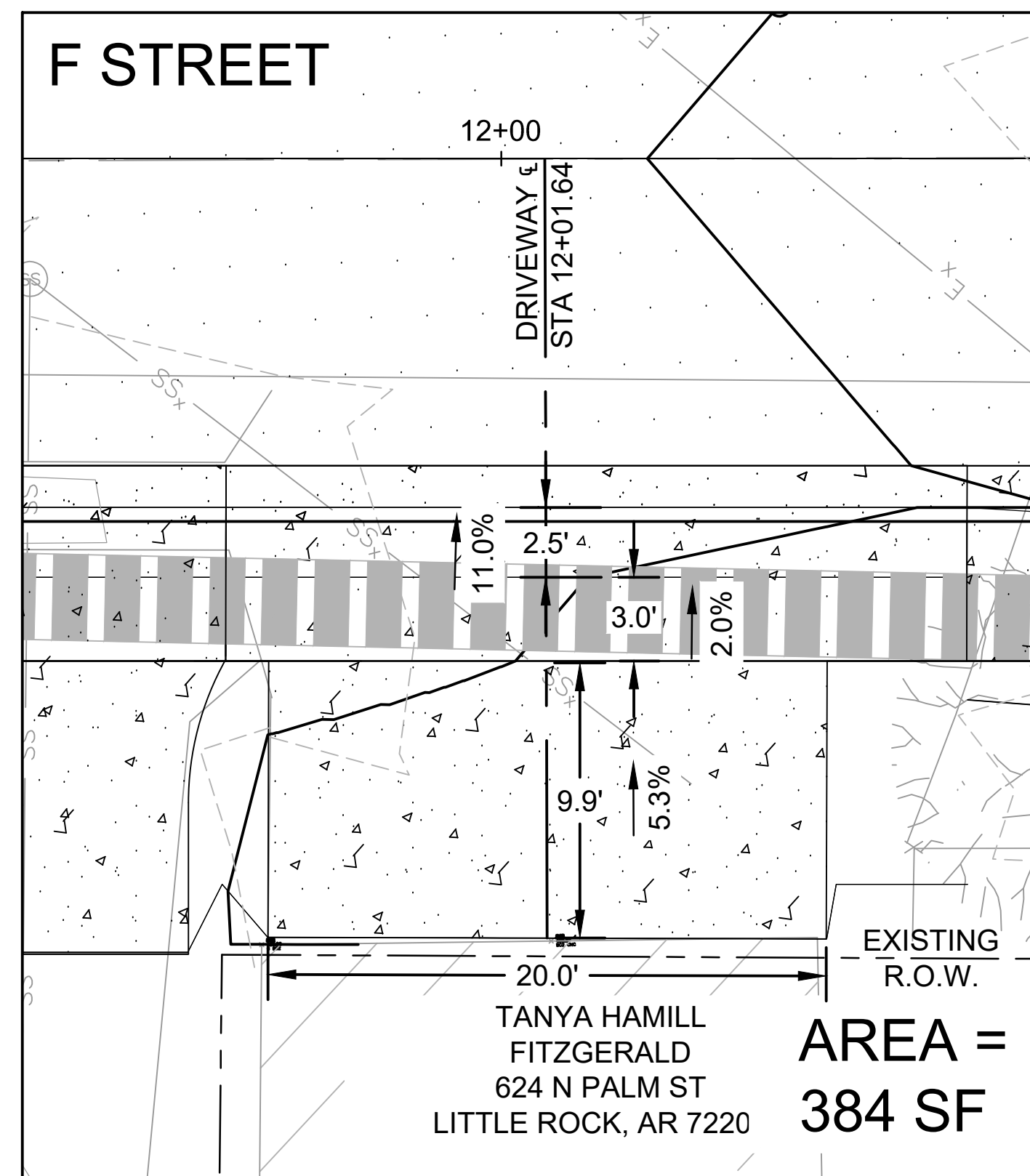
ALLEY TURNOUT AT
STA 11+82.99



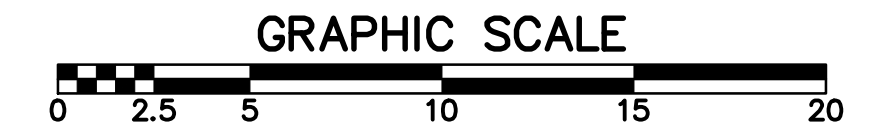
ALLEY TURNOUT AT
STA 11+82.99



DRIVEWAY AT
STA 11+58.38



DRIVEWAY AT
STA 12+01.64



NOTES:

1. DRIVEWAYS AND ALLEY TURNOUTS HAVE A 1.5" LIP AT THE FACE OF THE CURB.
2. DRIVEWAYS AND ALLEY TURNOUTS SHALL BE CONSTRUCTED MONOLITHIC WITH THE CURB.
3. ALL DRIVEWAY GRADES SHALL BE ROUND WITH A 2' RADIUS.
4. REFER TO ARDOT STANDARD DRAWING CDP-1 CONCRETE DITCH PAVING FOR MORE INFORMATION ABOUT DITCH PAVING.

REVISIONS DATE

CITY OF LITTLE ROCK, ARKANSAS
"F" STREET (SPRUCE TO PALM) RECONSTRUCTION

DRIVEWAY DETAILS



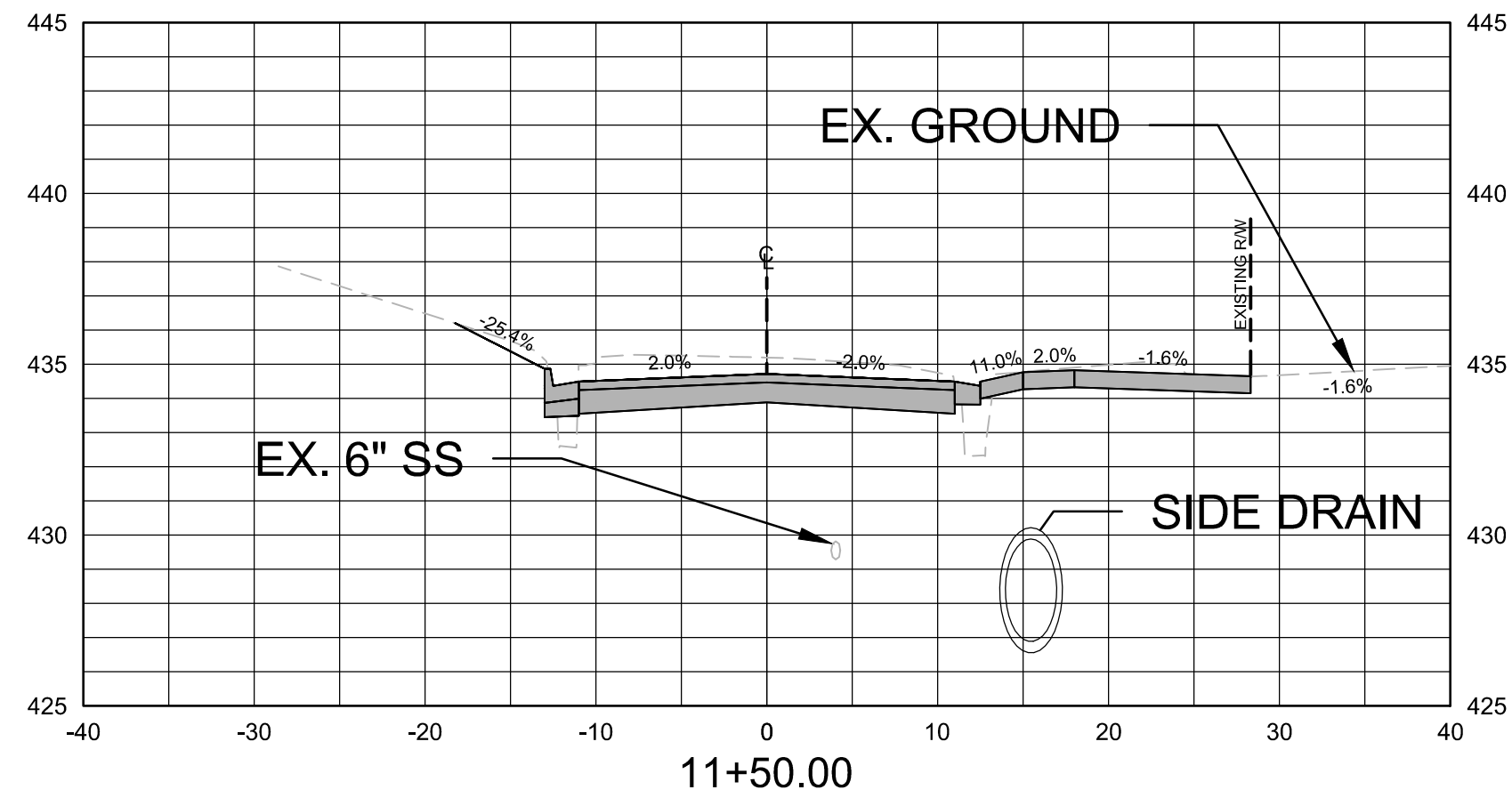
DEPARTMENT OF PUBLIC WORKS
CIVIL ENGINEERING
701 W. MARKHAM
LITTLE ROCK, ARKANSAS 72201



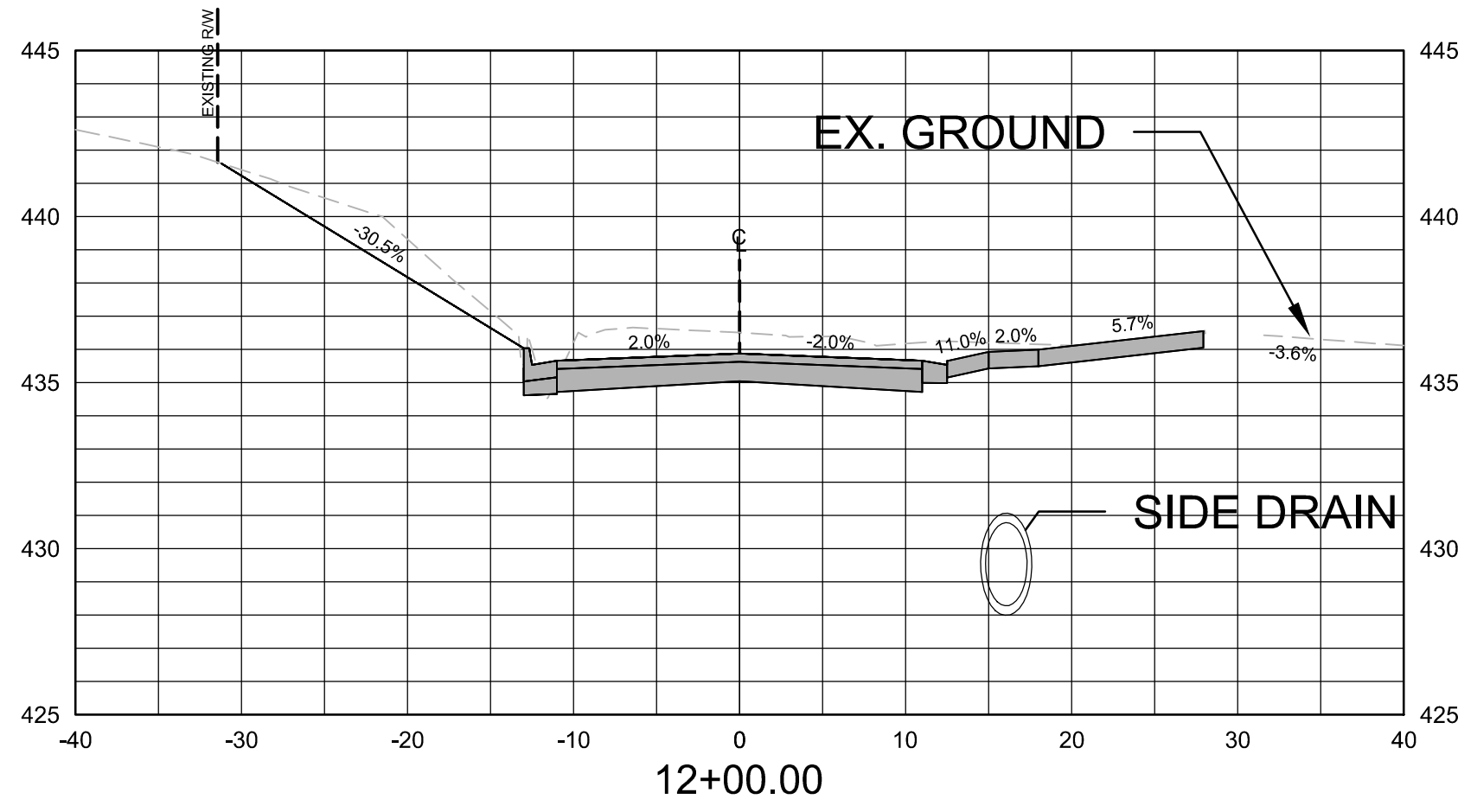
STATE OF ARKANSAS
LICENSED PROFESSIONAL ENGINEER
No. 21648
8/6/2024

DRAWN BY
CV
DESIGNED
CV
CHECKED
JB
DATE
8/6/2024
SCALE
1" = 5'
PROJECT NO.
CLR # 03-18-ST-56
SHEET NO.

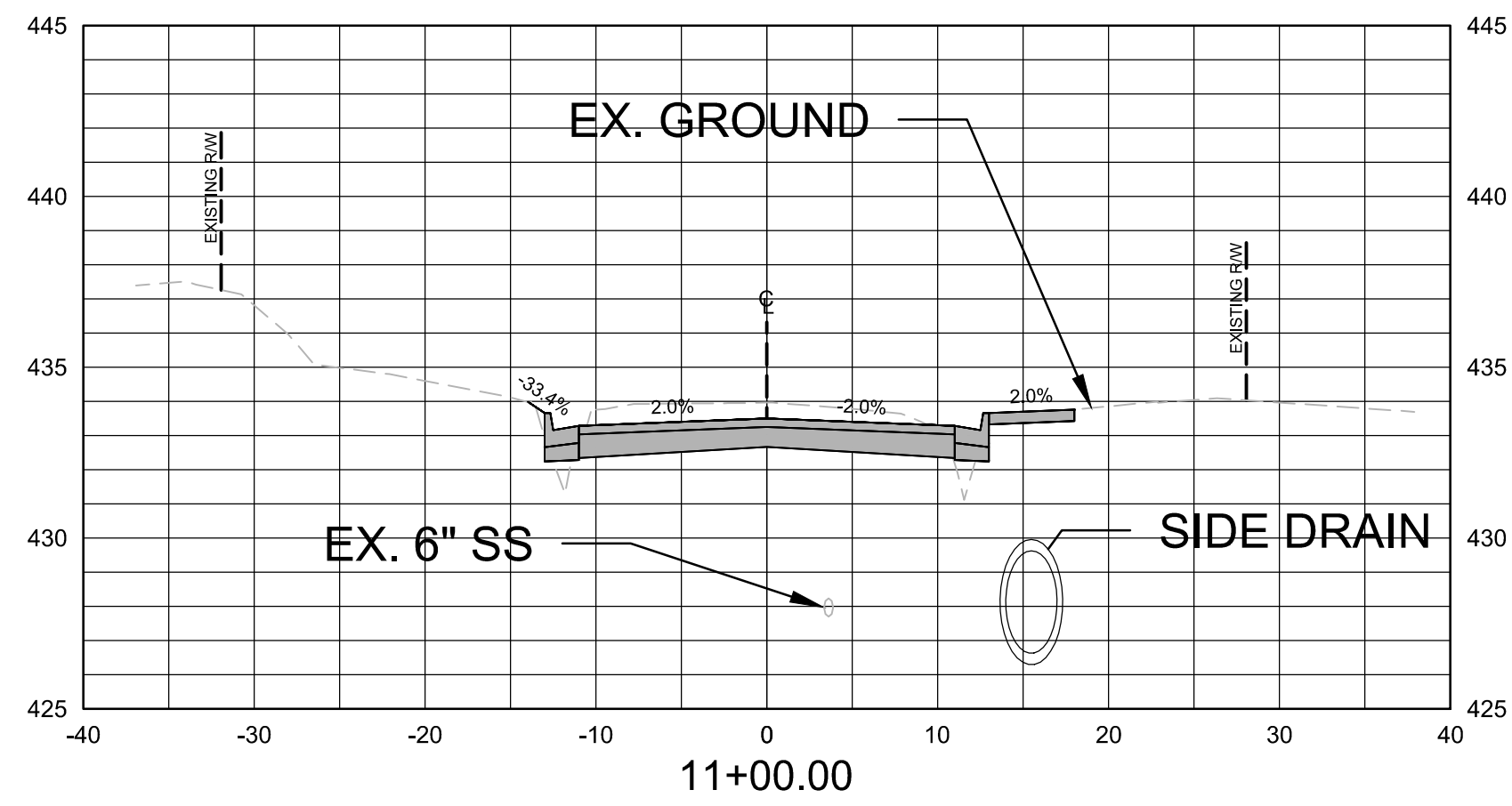
C6



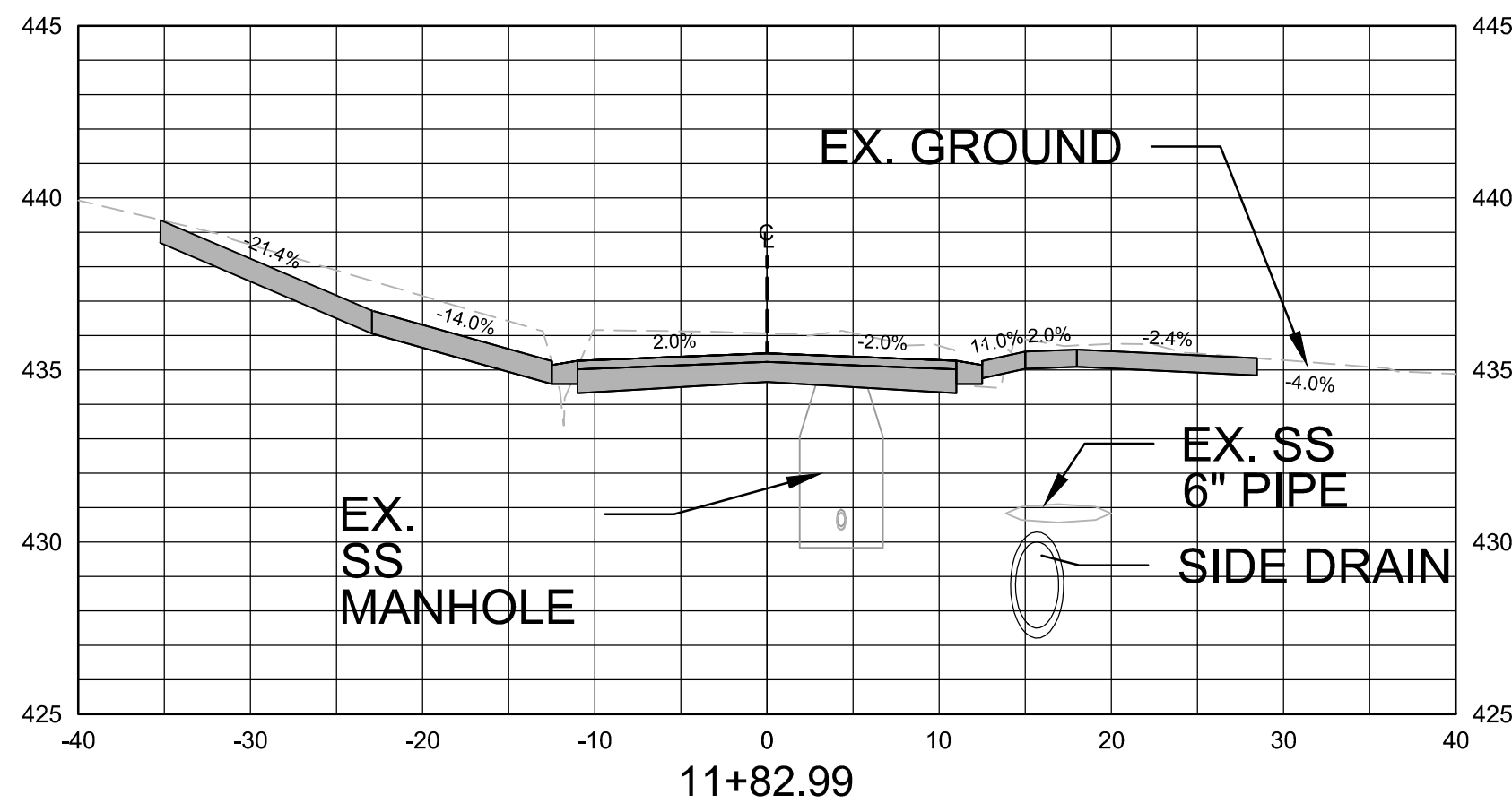
Total Volume at Station 11+50.00	
Cut Area	54.73
Fill Area	3.27
Cut Vol	79.70
Fill Vol	4.35
Cum Cut Vol	144.14
Cum Fill Vol	6.69
Net Vol	137.45



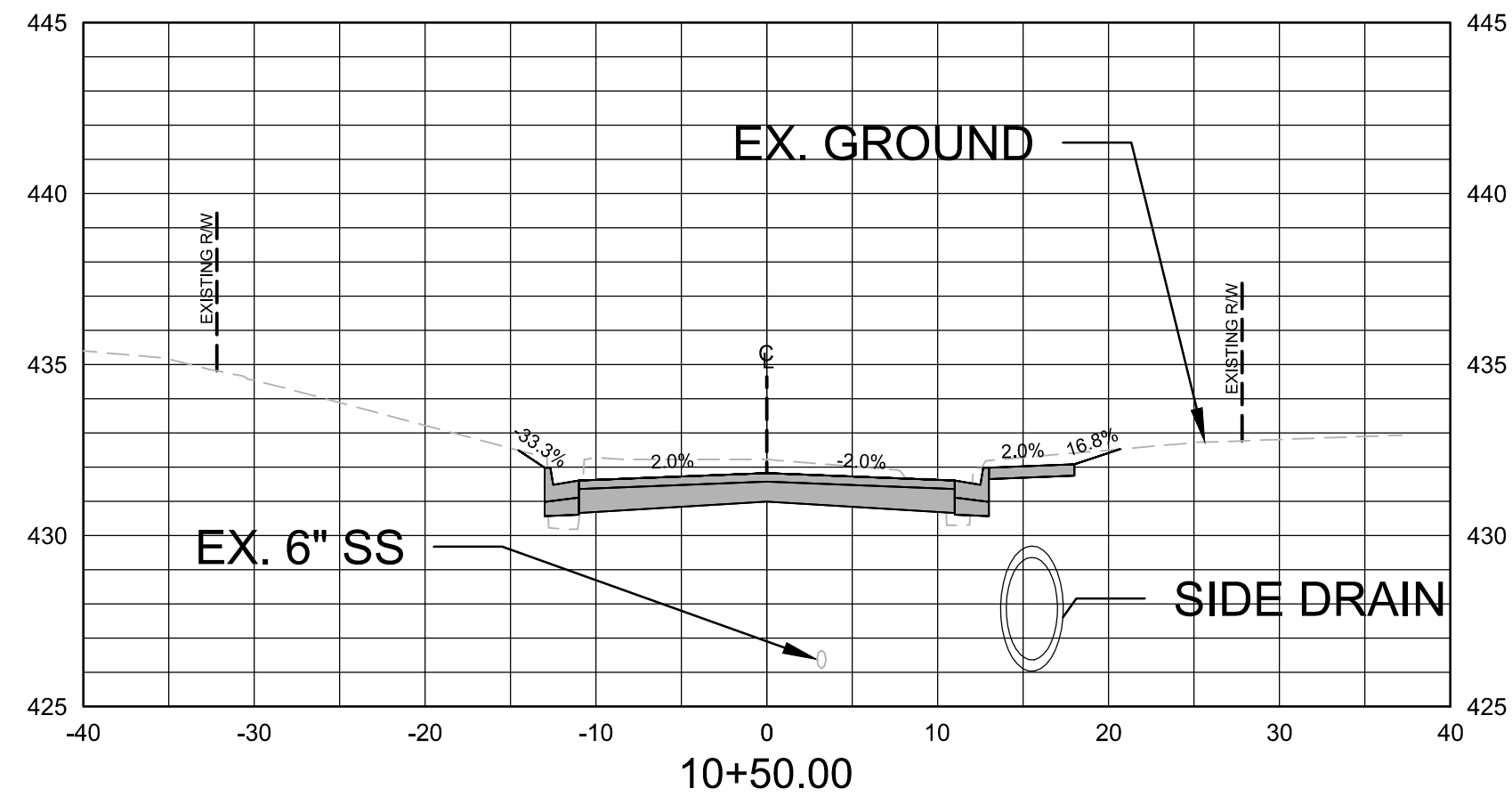
Total Volume at Station 12+00.00	
Cut Area	63.02
Fill Area	0.24
Cut Vol	40.50
Fill Vol	0.29
Cum Cut Vol	258.96
Cum Fill Vol	9.05
Net Vol	249.91



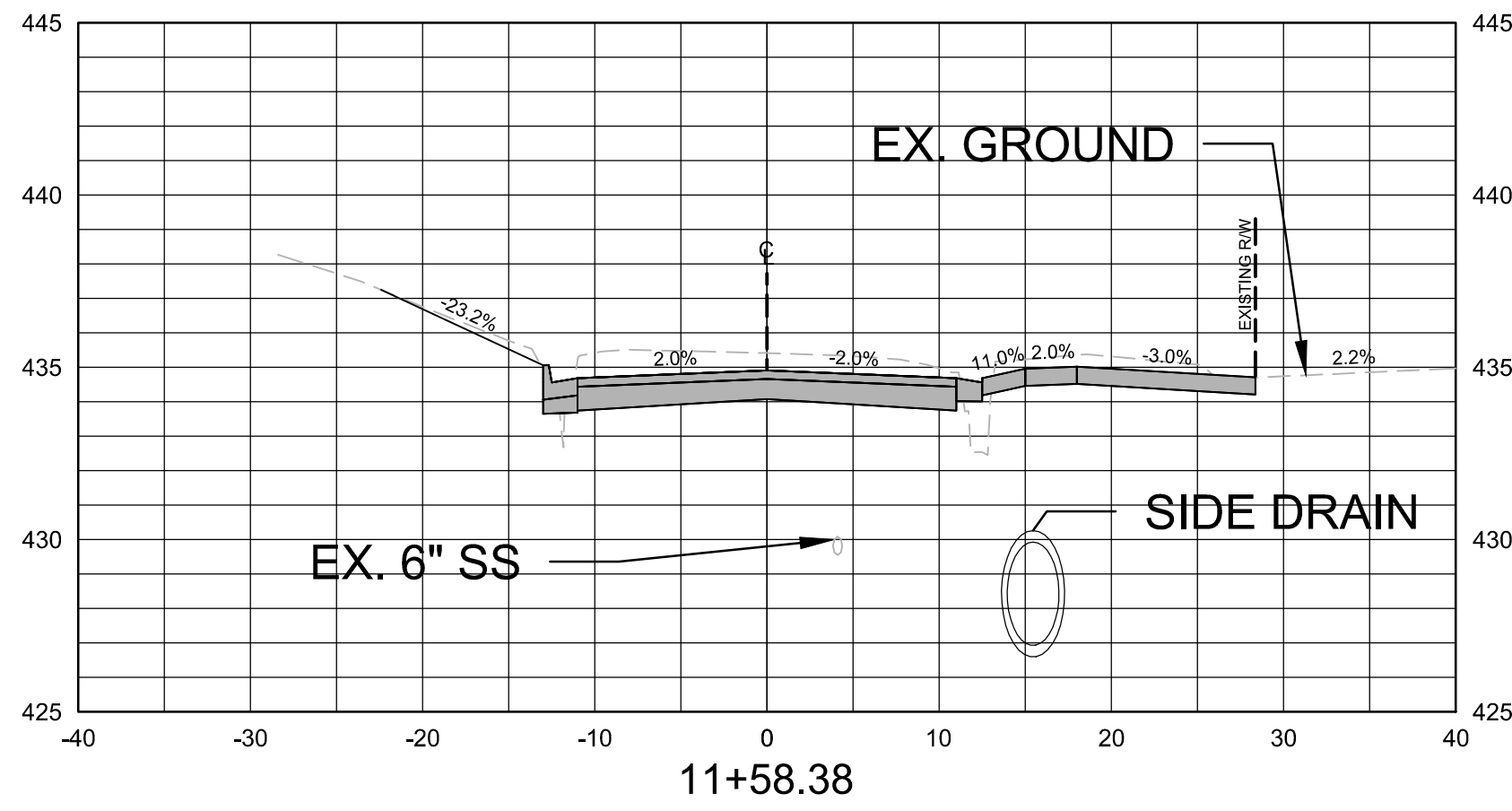
Total Volume at Station 11+00.00	
Cut Area	31.35
Fill Area	1.43
Cut Vol	64.44
Fill Vol	2.34
Cum Cut Vol	64.44
Cum Fill Vol	2.34
Net Vol	62.10



Total Volume at Station 11+82.99	
Cut Area	65.56
Fill Area	0.69
Cut Vol	56.69
Fill Vol	1.24
Cum Cut Vol	218.46
Cum Fill Vol	8.76
Net Vol	209.70



Total Volume at Station 10+50.00	
Cut Area	38.25
Fill Area	1.10
Cut Vol	0.00
Fill Vol	0.00
Cum Cut Vol	0.00
Cum Fill Vol	0.00
Net Vol	0.00

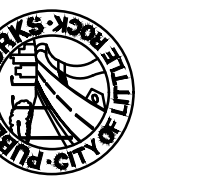


Total Volume at Station 11+58.38	
Cut Area	58.83
Fill Area	2.03
Cut Vol	17.62
Fill Vol	0.82
Cum Cut Vol	161.77
Cum Fill Vol	7.52
Net Vol	154.25

REVISIONS	DATE

CITY OF LITTLE ROCK, ARKANSAS
"F" STREET (SPRUCE TO PALM) RECONSTRUCTION

CROSS SECTIONS

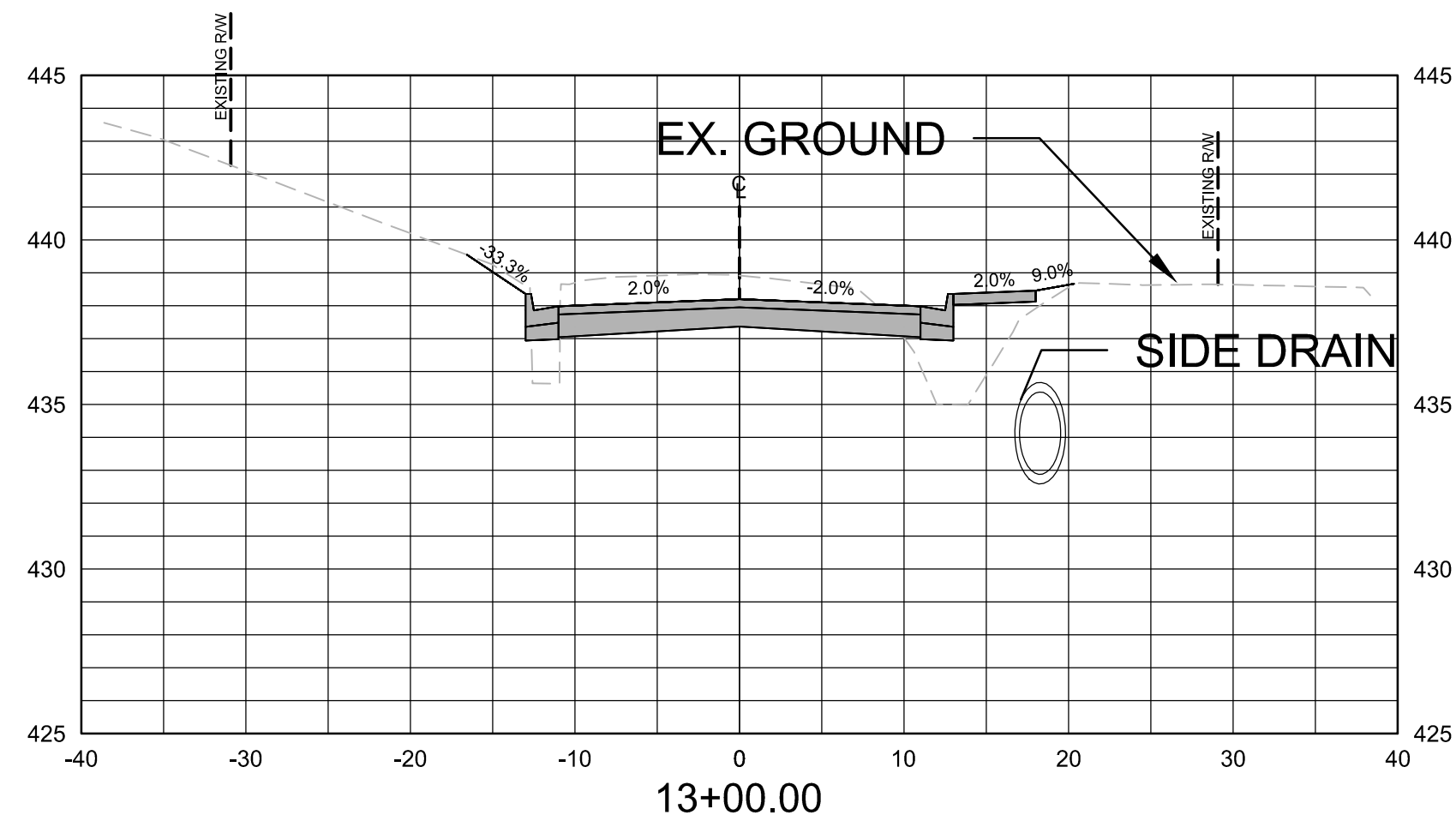


DEPARTMENT OF PUBLIC WORKS
CIVIL ENGINEERING
701 W. MARKHAM
LITTLE ROCK, ARKANSAS 72201

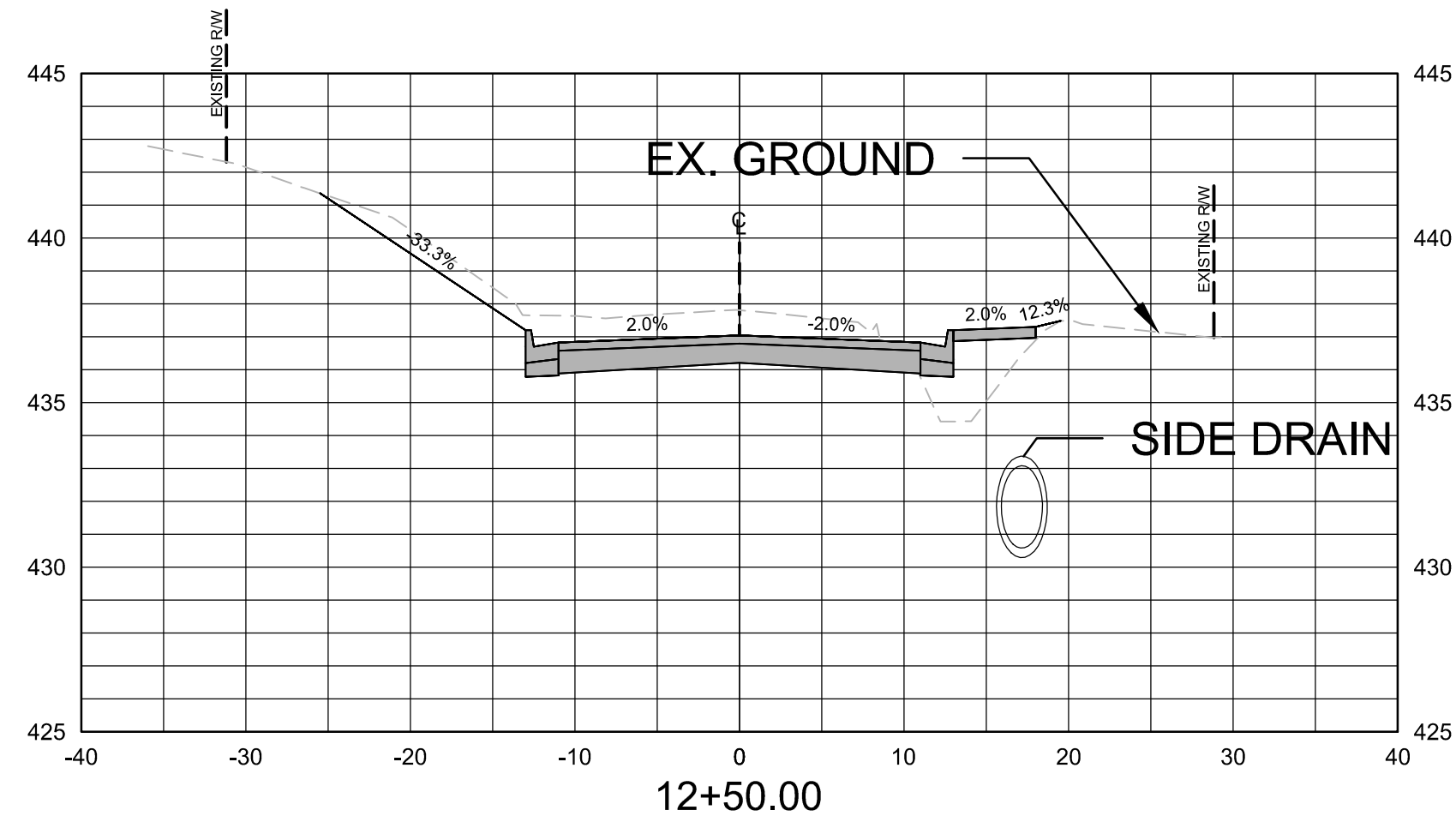


STATE OF ARKANSAS
LICENSED PROFESSIONAL ENGINEER
No. 21648
CHRISTOPHER J. WATKINS
8/6/2024

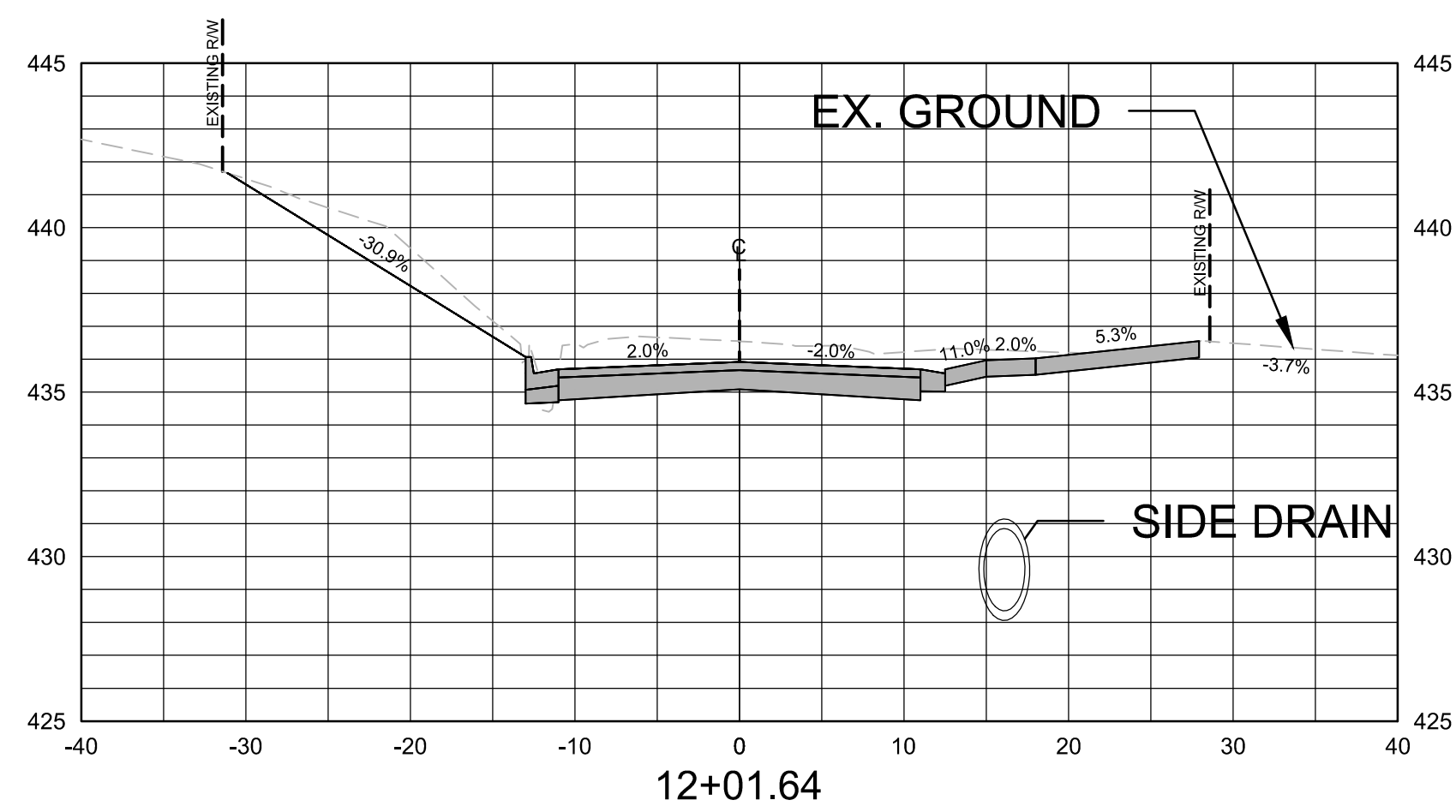
DRAWN BY
CV
DESIGNED
CV
CHECKED
JB
DATE
8/6/2024
SCALE
1" = 10' H, 1" = 5V
PROJECT NO.
CLR # 03-18-ST-56
SHEET NO.
C7



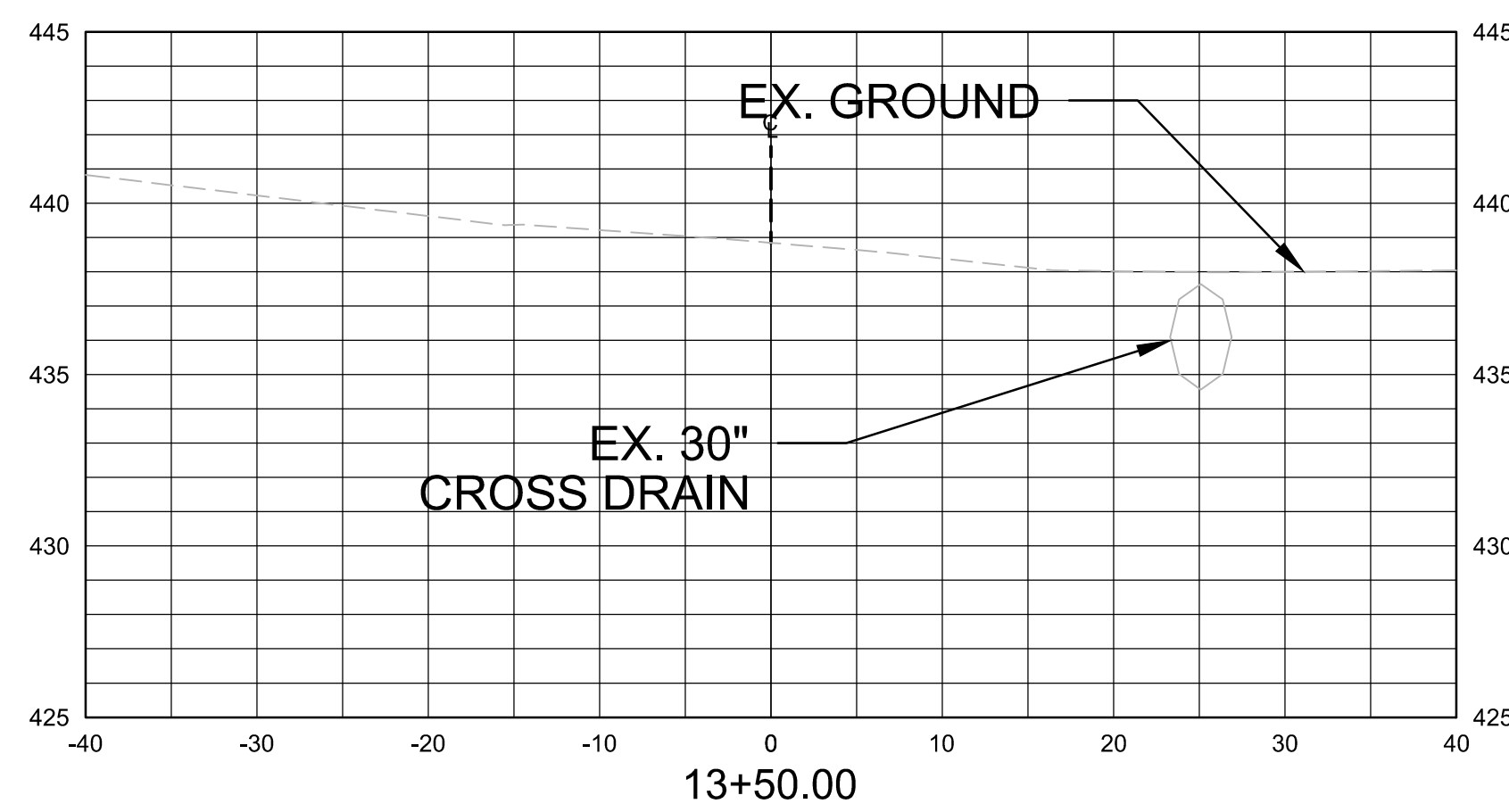
Total Volume at Station 13+00.00	
Cut Area	32.54
Fill Area	15.33
Cut Vol	70.34
Fill Vol	23.09
Cum Cut Vol	421.91
Cum Fill Vol	40.97
Net Vol	380.94



Total Volume at Station 12+50.00	
Cut Area	43.43
Fill Area	9.60
Cut Vol	88.98
Fill Vol	8.82
Cum Cut Vol	351.57
Cum Fill Vol	17.88
Net Vol	333.69



Total Volume at Station 12+01.64	
Cut Area	55.94
Fill Area	0.24
Cut Vol	3.62
Fill Vol	0.01
Cum Cut Vol	262.58
Cum Fill Vol	9.06
Net Vol	253.52



Total Volume at Station 13+50.00	
Cut Area	0.00
Fill Area	0.00
Cut Vol	7.50
Fill Vol	1.95
Cum Cut Vol	470.08
Cum Fill Vol	58.04
Net Vol	412.03

REVISIONS DATE

CITY OF LITTLE ROCK, ARKANSAS
"F" STREET (SPRUCE TO PALM) RECONSTRUCTION

CROSS SECTIONS



DEPARTMENT OF PUBLIC WORKS
CIVIL ENGINEERING
701 W. MARKHAM
LITTLE ROCK, ARKANSAS 72201



8/6/2024

DRAWN BY
CV
DESIGNED
CV
CHECKED
JB

DATE
8/6/2024

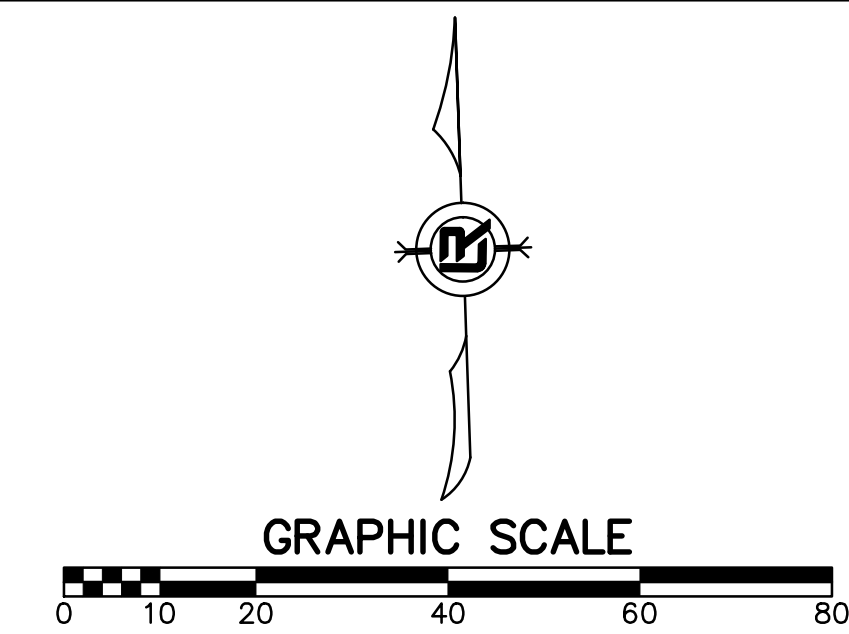
SCALE
1" = 10' H, 1" = 5V

PROJECT NO.
CLR # 03-18-ST-56

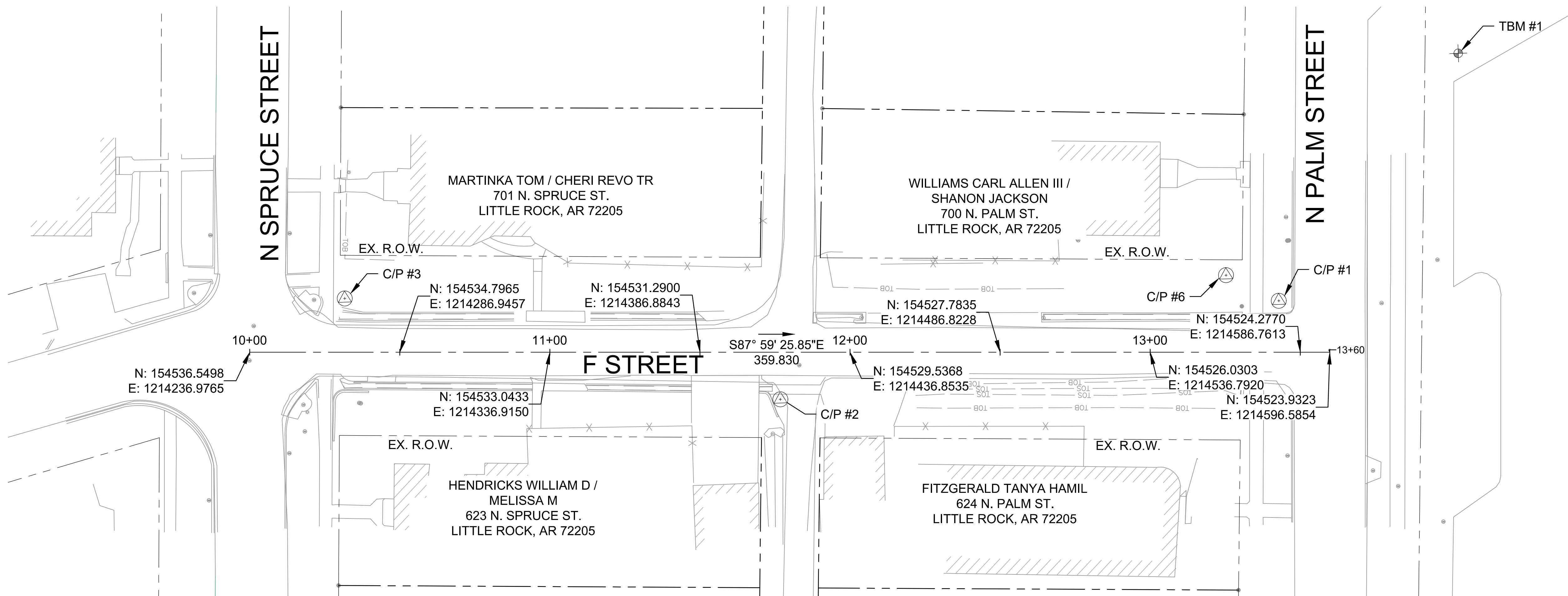
SHEET NO.

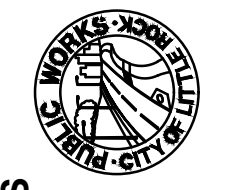
C8

SURVEY CONTROL POINTS LARCH ROAD							
POINT	DESCRIPTION	NORTHING	EASTING	ELEVATION	BASELINE REFERENCE	BASELINE STATION	BASELINE OFFSET
C/P #1	60D NAIL ON THE NORTH SIDE OF "F" STREET	154541.6632	1214580.2110	439.80	F ST.	13+42.85	17.15 LT
C/P #2	PK NAIL ON THE SOUTH SIDE OF "F" STREET	154514.6677	1214413.1152	435.50	F ST.	11+76.80	15.69 RT
C/P #3	60D NAIL ON THE NORTH SIDE OF "F" STREET	154553.3372	1214269.2534	432.08	F ST.	10+31.67	17.91 LT
C/P #6	60D NAIL ON THE NORTH SIDE OF "F" STREET	154550.7794	1214562.9422	441.68	F ST.	13+25.27	25.65 LT
TBM 1	CHISELED SQUARE ON THE NW CORNER OF THE CONCRETE PAD EAST OF THE FENCE ON THE EAST SIDE OF PALM ST.	154621.9354	1214642.8476	446.22	F ST.	N/A	97.99 LT



REVISIONS	DATE
CITY OF LITTLE ROCK, ARKANSAS	
"F" STREET (SPRUCE TO PALM) RECONSTRUCTION	
PROJECT LAYOUT	

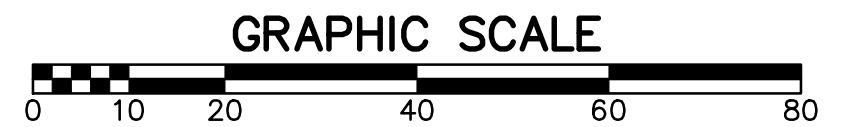
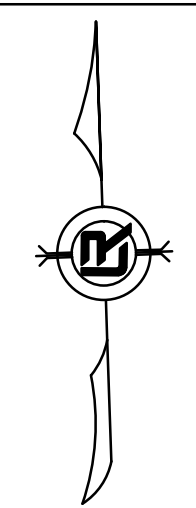



 DEPARTMENT OF PUBLIC WORKS
 CIVIL ENGINEERING
 701 W. MARKHAM
 LITTLE ROCK, ARKANSAS 72201

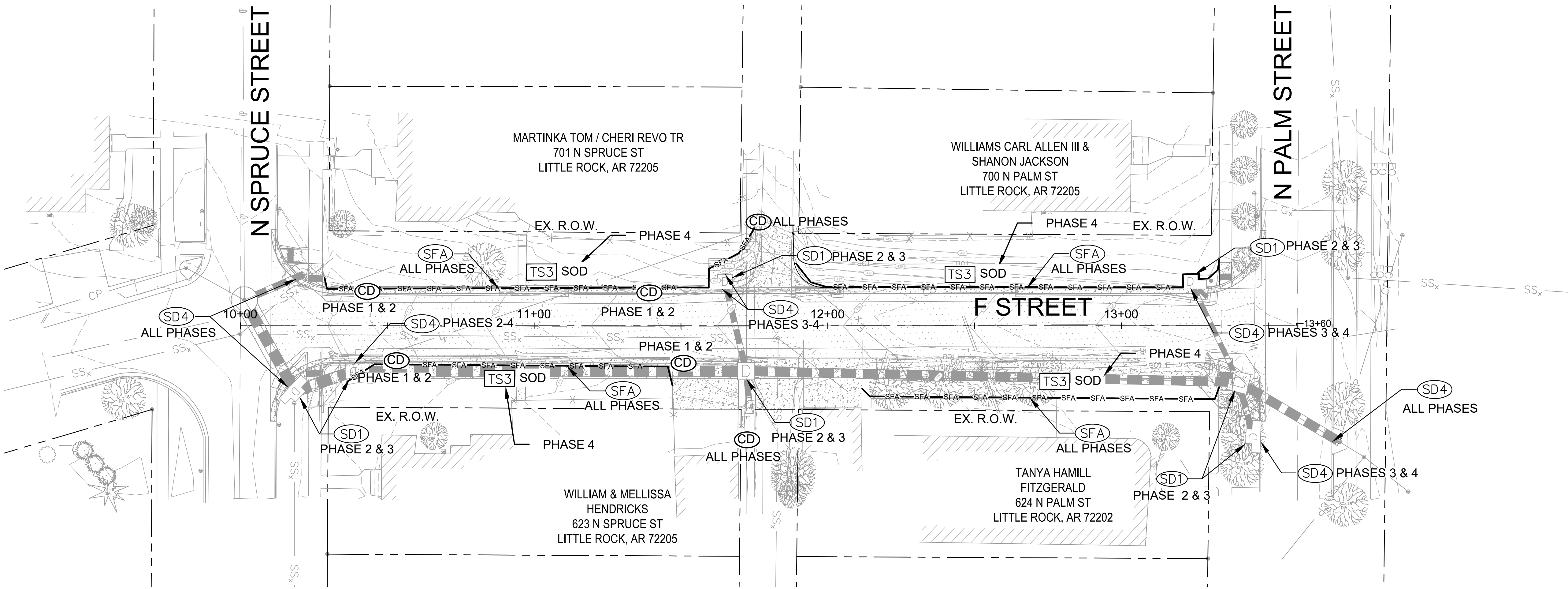

 STATE OF ARKANSAS
 LICENSED PROFESSIONAL ENGINEER
 No. 21648
 8/6/2024

DRAWN BY CV
DESIGNED CV
CHECKED JB
DATE 8/6/2024
SCALE 1" = 20'
PROJECT NO. CLR # 03-18-ST-56
SHEET NO. C9

REVISIONS	DATE



PHASING LEGEND
 PHASE 1 (INITIAL STRIP AND DEMOLITION)
 PHASE 2 (NEW DRAINAGE AND COMPACTED EMBANKMENT)
 PHASE 3 (NEW CURB, SIDEWALK, DRIVEWAY APRONS, ALLEY TURNOUTS AND FINAL GRADING)
 PHASE 4 (ASPHALT AND RESTORE DISTURBED AREAS WITH SOD)

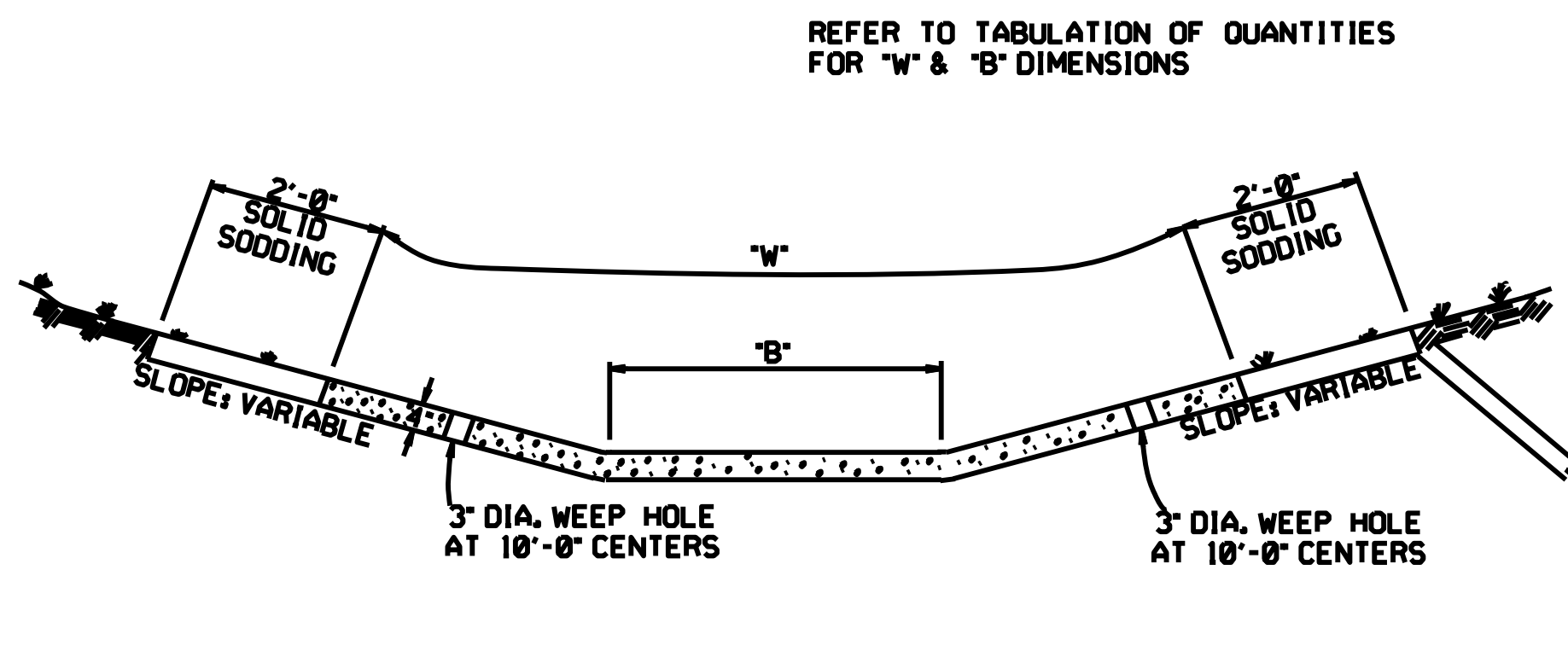


CITY OF LITTLE ROCK, ARKANSAS
 "F" STREET (SPRUCE TO PALM) RECONSTRUCTION
 EROSION CONTROL

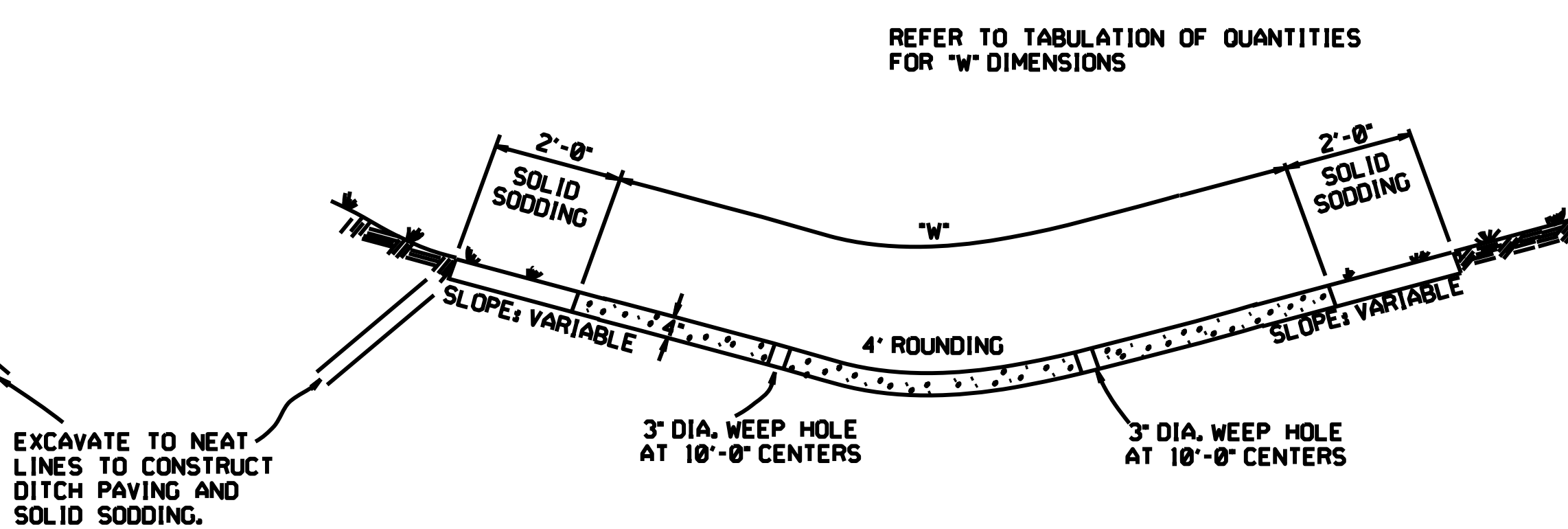
DEPARTMENT OF PUBLIC WORKS
 CIVIL ENGINEERING
 701 W. MARKHAM
 LITTLE ROCK, ARKANSAS 72201

STATE OF ARKANSAS
 LICENSED PROFESSIONAL ENGINEER
 No. 21648
 8/6/2024

DRAWN BY
 CV
 DESIGNED
 CV
 CHECKED
 JB
 DATE
 8/6/2024
 SCALE
 1" = 20'
 PROJECT NO.
 CLR # 03-18-ST-56
 SHEET NO.
C10

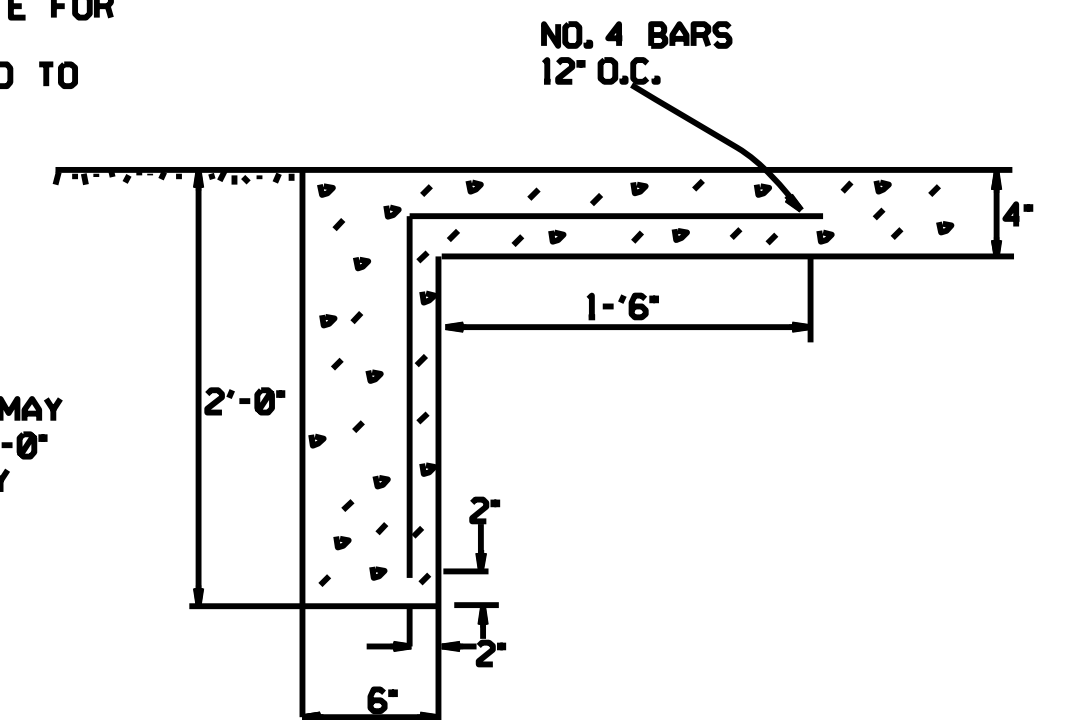


TYPE A



TYPE B

THE STEEL AND ADDITIONAL CONCRETE FOR THE WALLS SHALL NOT BE PAID FOR DIRECTLY, BUT SHALL BE CONSIDERED TO BE INCLUDED IN THE PRICE BID FOR "CONCRETE DITCH PAVING."



TOE WALL DETAIL FOR CONCRETE DITCH PAVING

TOE WALL DEPTH MAY BE ALTERED TO 1'-0" WHEN DIRECTED BY THE ENGINEER IN ROCK EXCAVATION

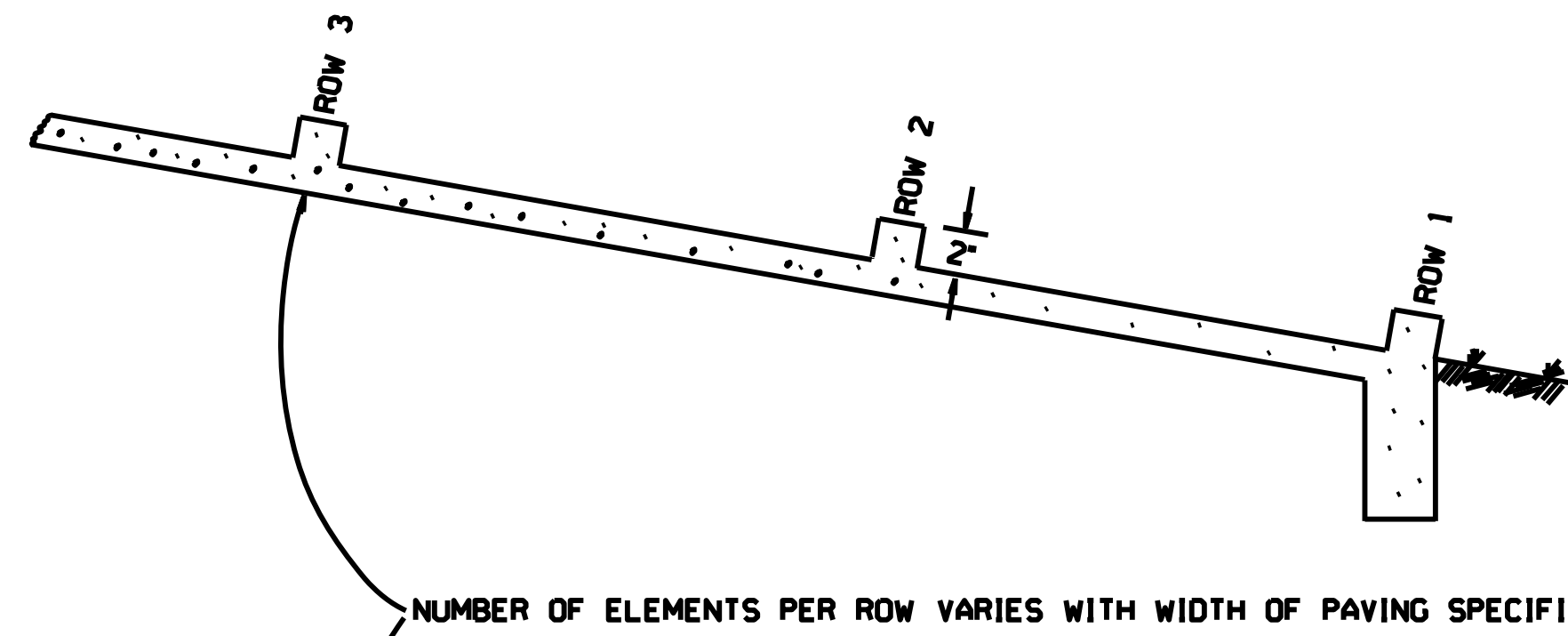
GENERAL NOTES:

THE FULL WIDTH OF EACH SECTION SHALL BE POURED MONOLITHICALLY.

TOE WALLS TO BE CONSTRUCTED FULL WIDTH AT EACH END OF DITCH PAVING, AND POURED MONOLITHICALLY.

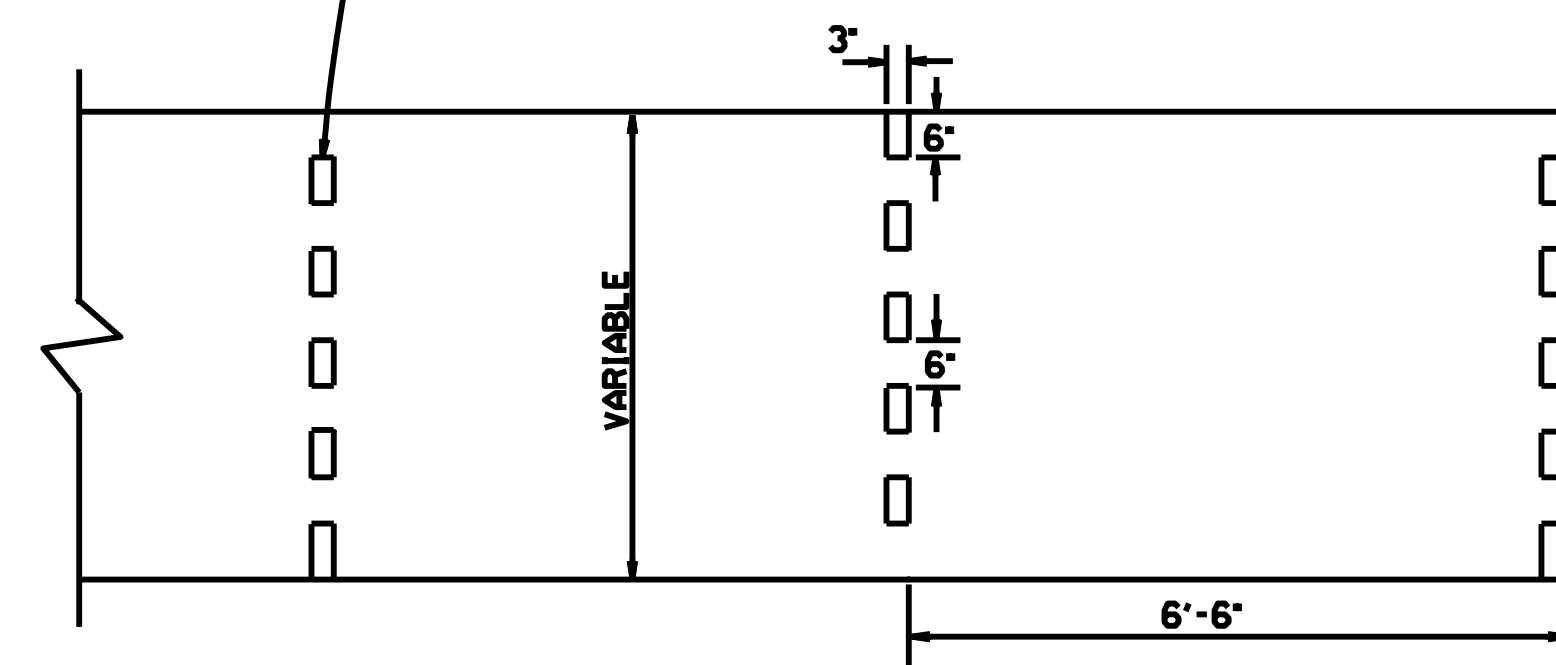
SOLID SOD ALONG DITCH PAVING TO BE PLACED WITHIN 14 DAYS OF DITCH PAVING CONSTRUCTION.

1' WIDE TRANSVERSE EXPANSION JOINTS SHALL BE PLACED IN CONCRETE DITCH PAVING AT 45' INTERVALS. THE SPACE SHALL BE FILLED WITH APPROVED JOINT FILLER COMPLYING WITH AASHTO M213.



NUMBER OF ELEMENTS PER ROW VARIES WITH WIDTH OF PAVING SPECIFIED

ENERGY DISSIPATORS TO BE USED FOR THE ENTIRE LENGTH OF DITCH WHEN SLOPE OF DITCH PAVING EXCEEDS 7%. THE DISSIPATORS WILL NOT BE PAID FOR DIRECTLY, BUT SHALL BE CONSIDERED TO BE INCLUDED IN THE PRICE BID FOR CONCRETE DITCH PAVING.



ENERGY DISSIPATORS
(NO SCALE)

DATE	REVISION	DATE	FILM D
12-8-16	CORRECTED ENERGY DISSIPATOR DRAWING AND NOTE		
11-17-10	ADDED GENERAL NOTE		
6-2-94	ADDED GENERAL NOTE ABOUT SOLID SODDING		
11-30-8	ELIMINATED MIN. ROWS OF ELEMENTS	1111-30-89	
7-15-88	REVISED DISSIPATOR NOTE	653-7-15-88	
4-3-87	REVISED ENERGY DISSIPATOR	671-4-3-87	
1-9-87	MODIFIED NOTE ON ENERGY DISS.	632-1-9-87	
11-3-86	ADDED NOTE TO ENERGY DISS.	644-11-3-86	
11-1-84	ENERGY DISSIPATOR DETAILS	508-11-1-84	
11-1-84	ADDED		
11-1-84	EXCAVATION DETAILS ADDED		
10-2-72	TYPED A & B		
	REVISED AND REDRAWN	508-10-2-72	
	DATE		
	REVISION		

ARKANSAS STATE HIGHWAY COMMISSION

CONCRETE DITCH PAVING

STANDARD DRAWING CDP-1