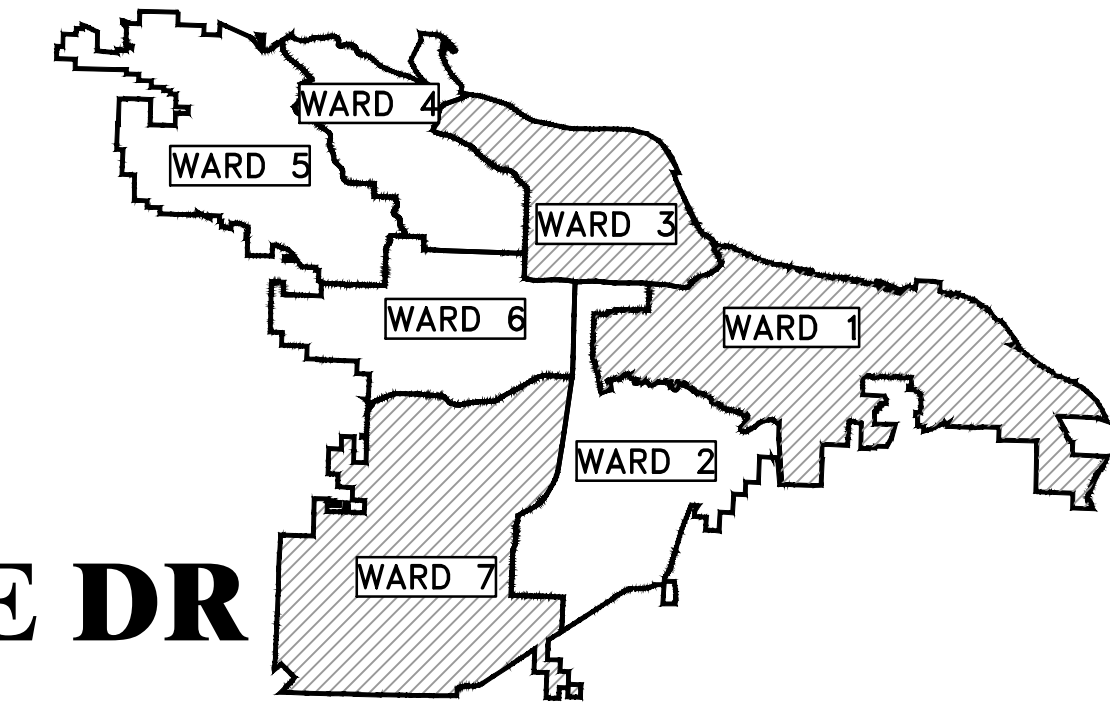


WARD 1, 3 & 7 SIDEWALKS

WARD 1 - 11TH ST - ADAMS ST TO WASHINGTON ST

WARD 3 - WASHINGTON ST - 12TH ST TO 13TH ST

WARD 7 - GREENWAY DR - MABELVALE PIKE TO DELROSE DR



PROJECT LOCATION - WARD 1, 3 & 7

WARD 1
PROJECT LOCATION
LAT: 34°44'30"N
LONG: 92°19'27"W

WARD 3
PROJECT LOCATION
LAT: 34°44'25"N
LONG: 92°19'26"W



WARD 7
PROJECT LOCATION
LAT: 34°41'54"N
LONG: 92°20'55"W

DEPARTMENT OF PUBLIC WORKS
CIVIL ENGINEERING
701 WEST MARKHAM STREET
LITTLE ROCK, ARKANSAS 72201

SHEET NO.	TITLE
C0	COVER SHEET
C1	GENERAL NOTES, LEGEND AND QUANTITY
CA1	TYPICAL SECTIONS
CA2	EXISTING CONDITIONS
CA3	WARD 1 - 11TH ST PLAN
CB1	TYPICAL SECTIONS
CB2	EXISTING CONDITIONS
CB3	WARD 3 - WASHINGTON ST PLAN
CC1	TYPICAL SECTIONS
CC2	EXISTING CONDITIONS
CC3	WARD 7 - GREENWAY DR PLAN I
CC4	WARD 7 - GREENWAY DR PLAN II



Know what's below.
Call before you dig.

GNE Designing our client's success
GarNat Engineering, LLC

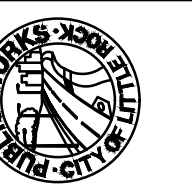
P.O. Box 116
Benton, AR 72018
Ph (501) 408-4650

3825 Mt Carmel Rd
Bryant, AR 72022
garnatengineering@gmail.com

REVISIONS DATE

CITY OF LITTLE ROCK, ARKANSAS
WARD 1, 3 & 7 SIDEWALKS

COVER SHEET
15% SUBMITTAL



DEPARTMENT OF PUBLIC WORKS
CIVIL ENGINEERING
701 W. MARKHAM
LITTLE ROCK, ARKANSAS 72201



PRELIMINARY

DRAWN BY
TM
DESIGNED
VJW & TM
CHECKED
VJW
DATE
06-25-2024
SCALE
N.T.S.
PROJECT NO.
24017
SHEET NO.
C0

Ward 1,3 & 7 Sidewalks -15% QUANTITIES
15-Jul-2024

Item#	Description	Unit	Total Quantity
2.01	Site Preparation	LS	1
2.02	Clearing and Grubbing Trees	EA	3
3.01	Unclassified Excavation	CY	229
3.02	Compacted Embankment	CY	229
3.40	Top Soil	CY	229
7.06	Concrete Driveway and Apron (6" Thick)	SF	2585
8.01	Concrete Curb and Gutter (Class 3)	LF	26
9.10	Concrete Sidewalk (4" Thick)	SF	3675
9.40	Concrete Sidewalk Turn-up Wall	SF	2211
10.80	Rebuild Inlet Top	EA	1
14.01	Solid Sod, Bermuda	SY	1450
16.01	Maintenance of Traffic	LS	1
18.40	Handrail	LF	20
18.50	Access Ramp	SF	2005
18.55	Water for Dust Control	GAL	20000
19.01	Final cleanup	LS	1
22.10	Mailbox Relocation	EA	3
24.06	Sediment Barrier, Silt Fence (SD1)	EA	1
24.09	Sediment Barrier, Block (SD-4)	EA	1
26.10	Trench excavation & safety	LS	1
24.11	Silt Fence Type A (SFA)	LF	1580
30.02	Relocate Existing Sign	EA	7
719.12W	Thermoplastic Pavement Marking White (12")	LF	300
726.01	Standard Sign	SF	20
729.01	Channel Post Sign Support (Type)	EA	2

EXISTING

IRON ROD
PK NAIL
R.R. SPIKE
CONC. MONUMENT
WATER VALVE
WATER METER
FIRE HYDRANT
GAS METER
GAS VALVE
CLEAN-OUT
GUARD POST (BOLLARD)
SIGN POST
BENCHMARK
STORM SEWER MANHOLE
SANITARY SEWER MANHOLE
TELEPHONE MANHOLE
ELECTRIC MANHOLE
TELEPHONE BOX
ELECTRIC BOX
CABLE BOX
UTILITY POLE
GUY WIRE
LIGHT POLE
POST OR POLE (TYPE AS NOTED)
MAILBOX
DECIDUOUS TREE

EVERGREEN/CONIFEROUS TREE

BUSH

PROPERTY LINE
SETBACK LINE
EASEMENT LINE
CURB
FENCE
OVERHEAD UTILITY
UNDERGROUND TELEPHONE
UNDERGROUND ELECTRIC
WATER LINE
SEWER LINE
GAS LINE
STORM SEWER/CULVERT
CONTOUR LINE

24" CMP/RCP/DIP

PROPOSED

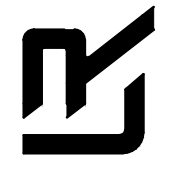
CONTOUR
SPOT ELEVATION
SPOT CURB ELEVATION
STORM SEWER - PIPE
STORM SEWER - MITERED END SECTION
STORM SEWER - GRATE INLET
STORM SEWER - JUNCTION BOX
STORM SEWER - FLARED END SECTION
STORM SEWER - HEADWALL
STORM SEWER - INLET WITH SINGLE EXTENSION
STORM SEWER - INLET WITH DOUBLE EXTENSION
STORM SEWER - AREA INLET
GRADE BREAK LINE
HIGH POINT
LOW POINT
CUT LINE
FILL LINE
SANITARY SEWER PIPE
SANITARY SEWER MANHOLE
CURB
CONCRETE
CONSTRUCTION - ENTRANCE/EXIT
CHECK DAM
DIVERSION BERM
DOWNDRAIN STRUCTURE - TEMPORARY
ROCK DAM
SEDIMENT BARRIER - SILT FENCE
SEDIMENT BARRIER - GRAVEL RING
SEDIMENT BARRIER - BLOCK & GRAVEL
SEDIMENT BARRIER - BLOCK
TEMPORARY SEDIMENT BASIN
SILT FENCE - TYPE A
SILT FENCE - TYPE B
SILT FENCE - TYPE C
STORM DRAIN OUTLET PROTECTION
SURFACE ROUGHENING
DISTURBED AREA STABILIZATION -TEMPORARY STABILIZATION
DISTURBED AREA STABILIZATION -TEMPORARY GRASSING
DISTURBED AREA STABILIZATION -PERMANENT GRASSING
MATting/BLANKETS

25.00
25.50
25.00

REVISIONS	DATE

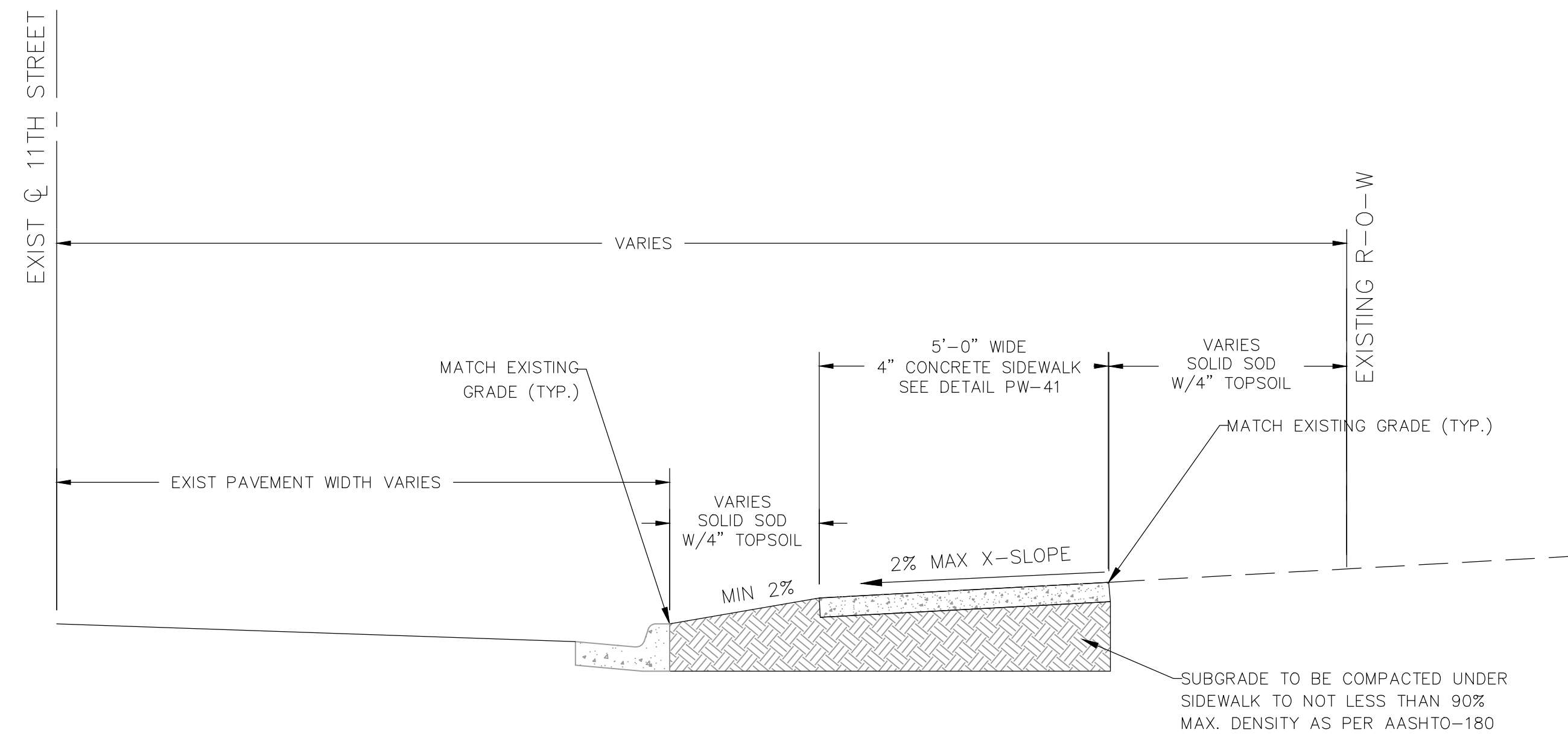
CITY OF LITTLE ROCK, ARKANSAS
WARD 1, 3 & 7 SIDEWALKS
GENERAL NOTES, LEGEND AND QUANTITY
15% SUBMITTAL

DEPARTMENT OF PUBLIC WORKS
CIVIL ENGINEERING
500 W. MARKHAM
LITTLE ROCK, ARKANSAS 72201



PRELIMINARY

DRAWN BY TM
DESIGNED VJW & TM
CHECKED VJW
DATE 07-12-2024
SCALE 1"=20' (22X34)
PROJECT NO. 24017
SHEET NO. C1



TYPICAL SECTION - 5' SIDEWALK IN 11TH STREET
N.T.S.

STA 0+00 TO STA 3+72

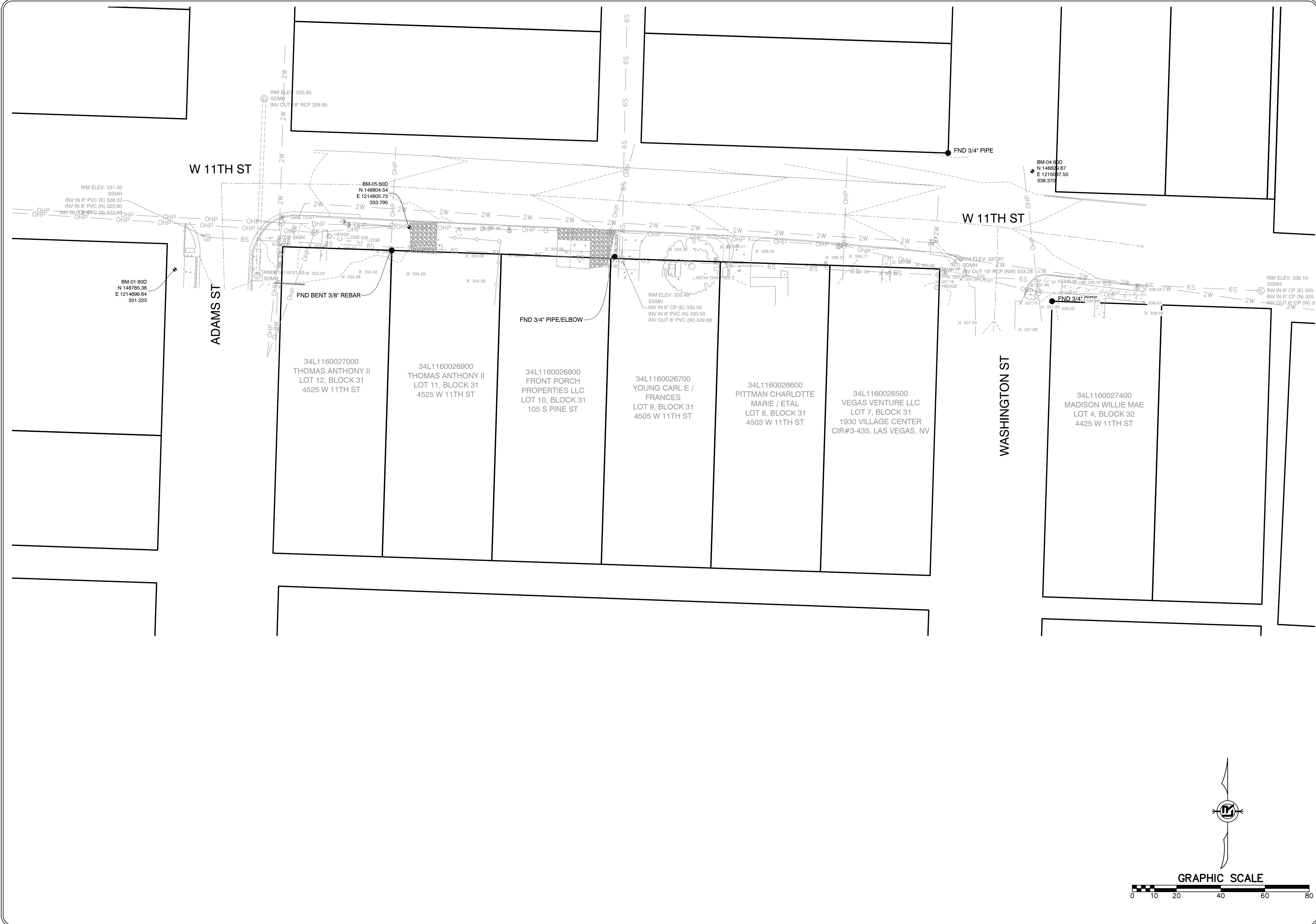
REVISIONS	DATE

CITY OF LITTLE ROCK, ARKANSAS
WARD 1, 3 & 7 SIDEWALKS
TYPICAL SECTIONS
15% SUBMITTAL

DEPARTMENT OF PUBLIC WORKS
CIVIL ENGINEERING
701 W. MARKHAM
LITTLE ROCK, ARKANSAS 72201

PRELIMINARY

DRAWN BY	TM
DESIGNED	VJW & TM
CHECKED	VJW
DATE	06-27-2024
SCALE	N.T.S.
PROJECT NO.	24017
SHEET NO.	CA1



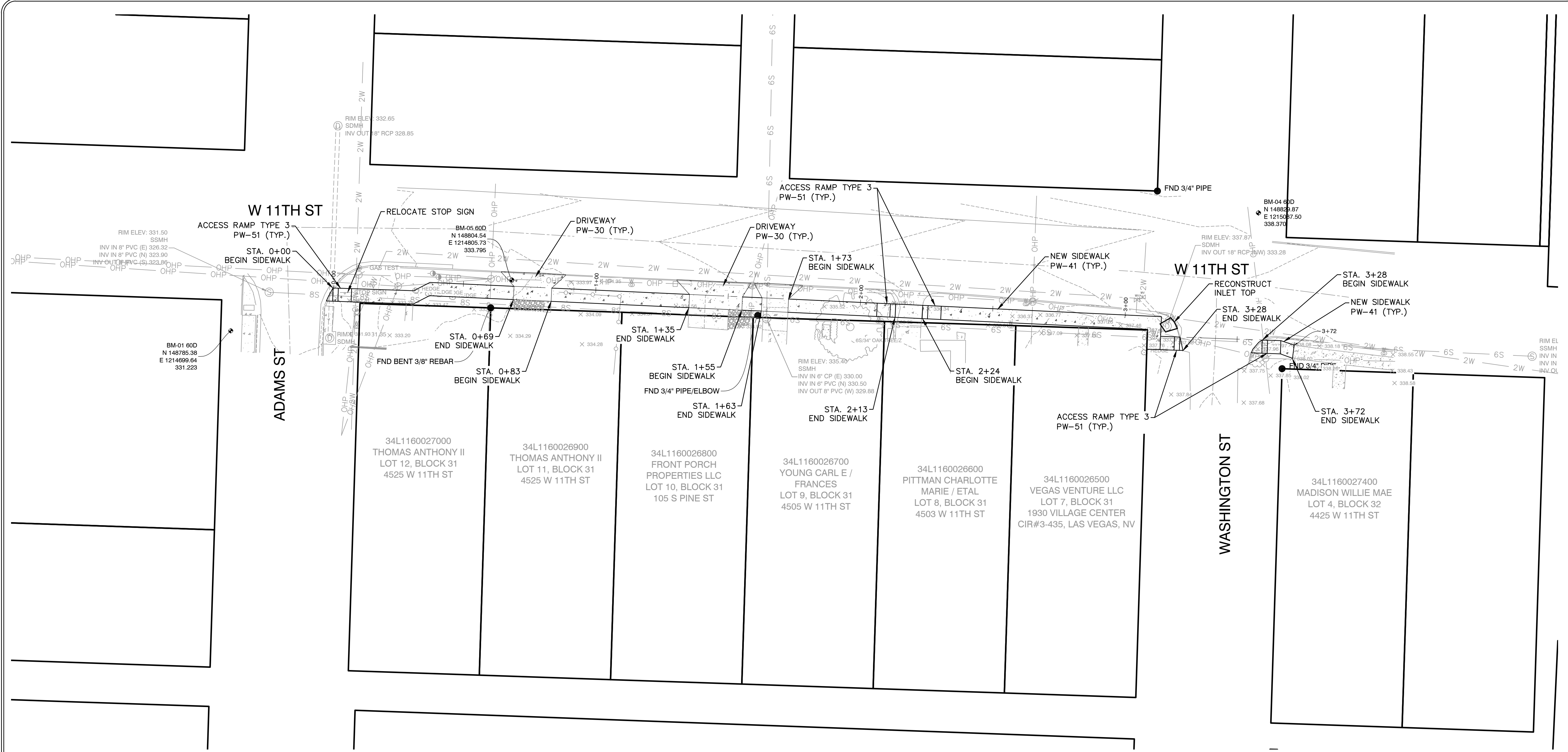
REVISIONS	DATE

CITY OF LITTLE ROCK, ARKANSAS
 WARD 1, 3 & 7 SIDEWALKS
 EXISTING CONDITIONS I
 15% SUBMITTAL

DEPARTMENT OF PUBLIC WORKS
 CIVIL ENGINEERING
 701 W. MARKHAM
 LITTLE ROCK, ARKANSAS 72201

PRELIMINARY

DRAWN BY
 TM
 DESIGNED
 VJW & TM
 CHECKED
 VJW
 DATE
 05-03-2024
 SCALE
 1"=20' (22X34)
 PROJECT NO.
 24017
 SHEET NO.
 CA3



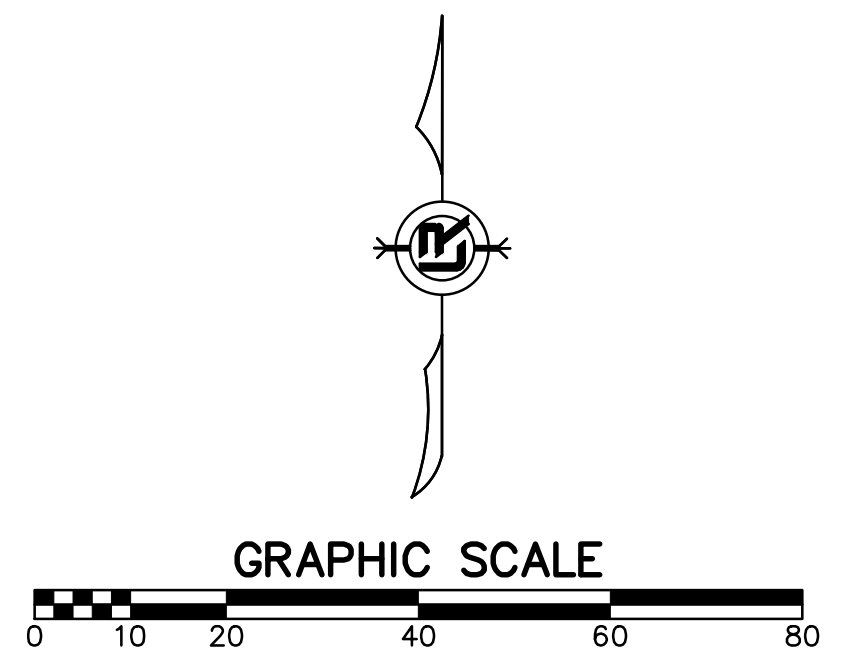
REVISIONS	DATE

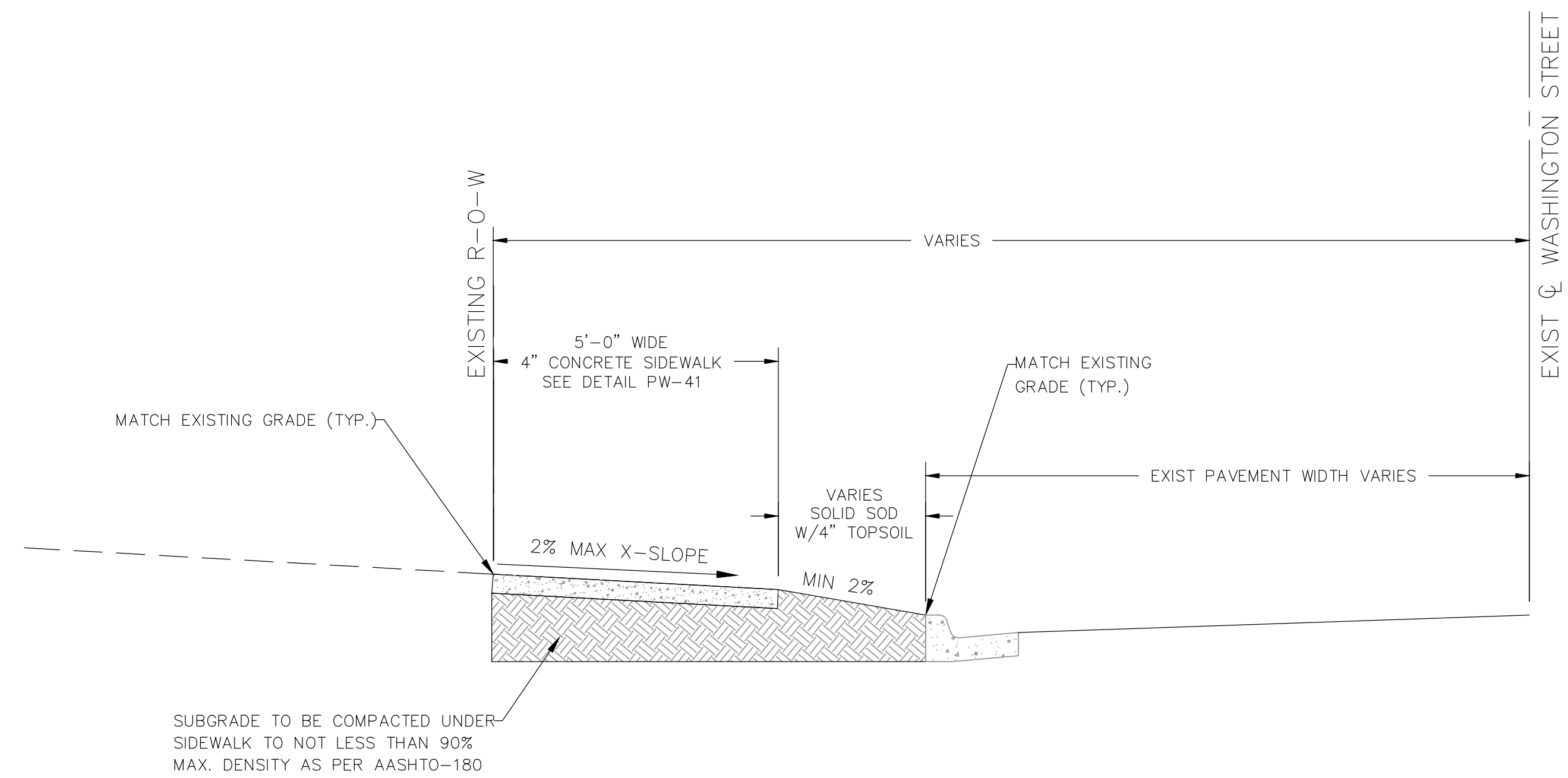
CITY OF LITTLE ROCK, ARKANSAS
WARD 1, 3 & 7 SIDEWALKS
WARD 1 - 11TH ST PLAN
15% SUBMITTAL

DEPARTMENT OF PUBLIC WORKS
CIVIL ENGINEERING
701 W. MARKHAM
LITTLE ROCK, ARKANSAS 72201

PRELIMINARY

DRAWN BY
 TM
DESIGNED
 VJW & TM
CHECKED
 VJW
DATE
 06-25-2024
SCALE
 1"=20' (22X34)
PROJECT NO.
 24017
SHEET NO.
 CA3





TYPICAL SECTION - 5' SIDEWALK IN WASHINGTON STREET
N.T.S.

STA 0+00 TO STA 3+78

REVISIONS DATE

REVISIONS	DATE

CITY OF LITTLE ROCK, ARKANSAS
WARD 1, 3 & 7 SIDEWALKS

TYPICAL SECTIONS
15% SUBMITTAL

DEPARTMENT OF PUBLIC WORKS
CIVIL ENGINEERING
701 W. MARKHAM
LITTLE ROCK, ARKANSAS 72201



PRELIMINARY

DRAWN BY

TM

DESIGNED

VJW & TM

CHECKED

VJW

DATE

07-02-2024

SCALE

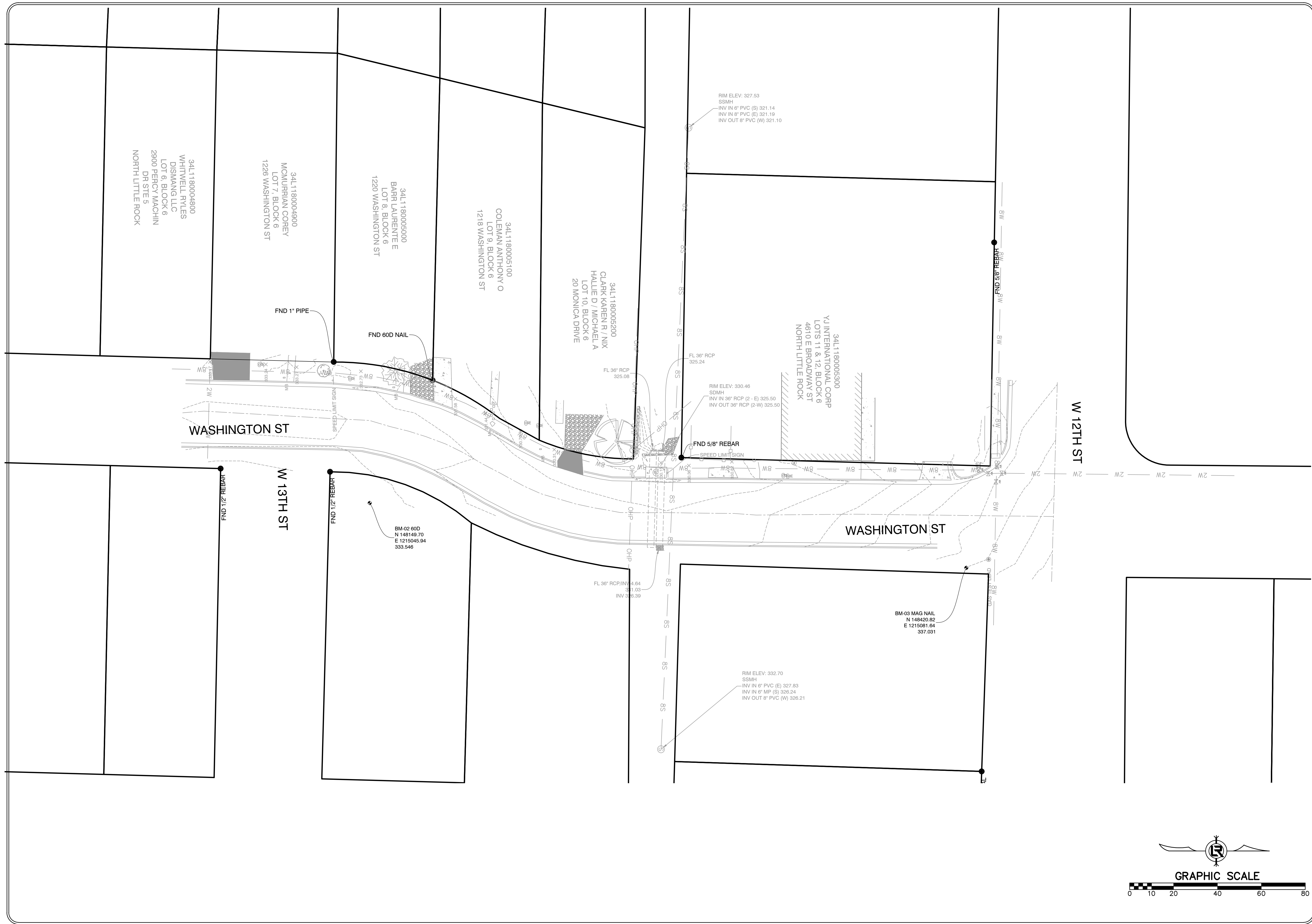
N.T.S.

PROJECT NO.

24017

SHEET NO.

CB1



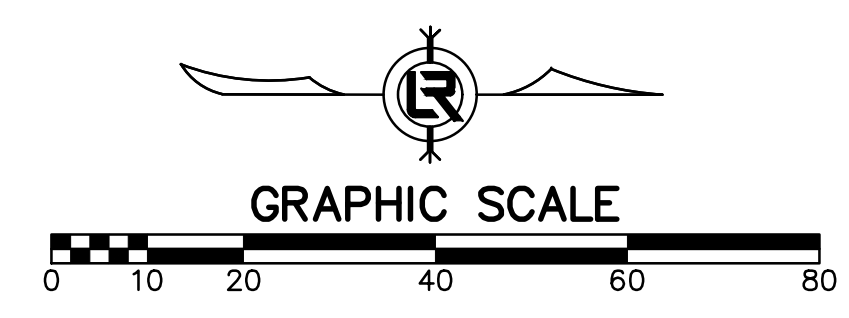
REVISIONS	DATE

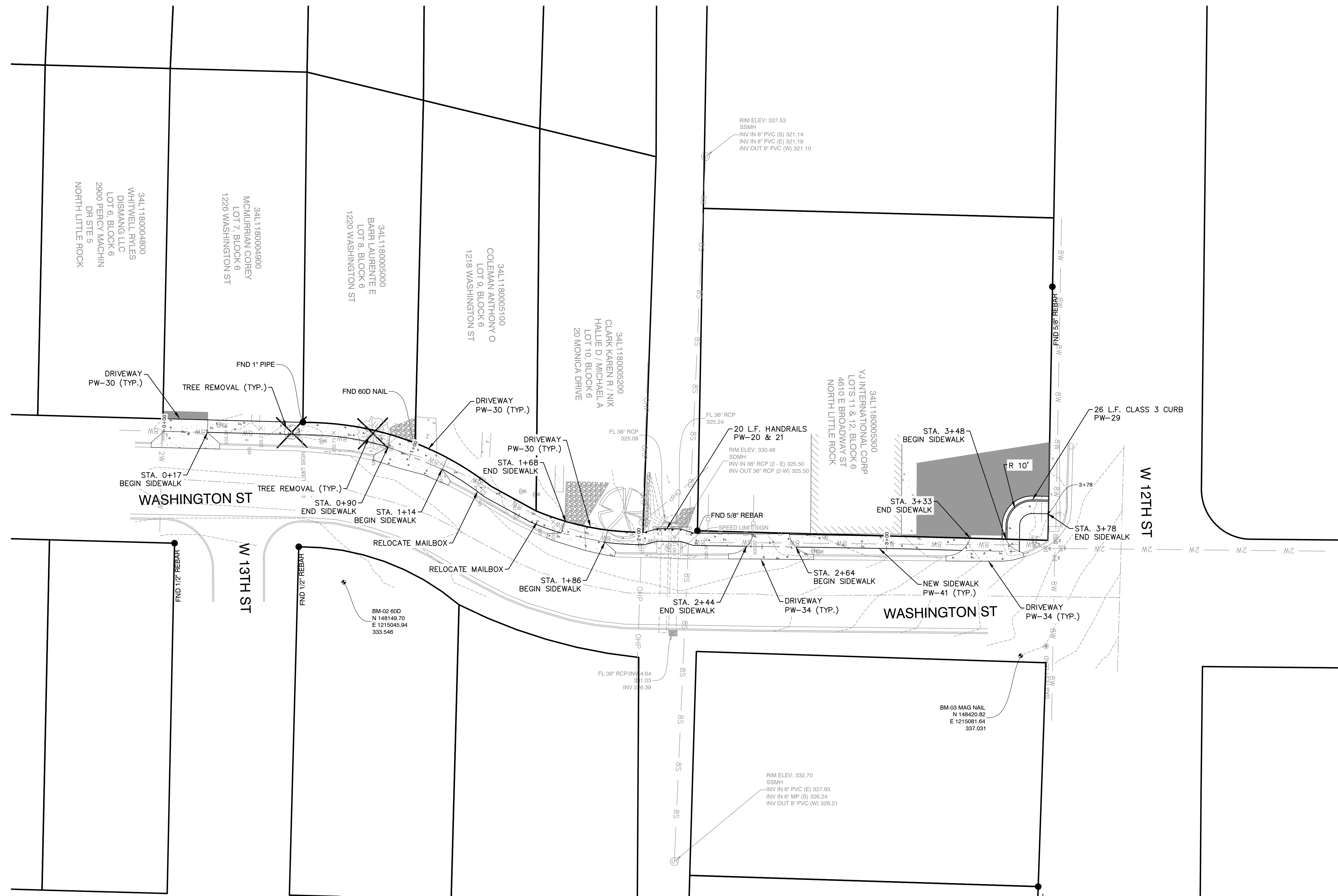
CITY OF LITTLE ROCK, ARKANSAS
 WARD 1, 3 & 7 SIDEWALKS
 EXISTING CONDITION
 15% SUBMITTAL

DEPARTMENT OF PUBLIC WORKS
 CIVIL ENGINEERING
 701 W. MARKHAM
 LITTLE ROCK, ARKANSAS 72201

PRELIMINARY

DRAWN BY
 TM
 DESIGNED
 VJW & TM
 CHECKED
 VJW
 DATE
 07-03-2024
 SCALE
 1"=20' (22X34)
 PROJECT NO.
 24017
 SHEET NO.
 CB3





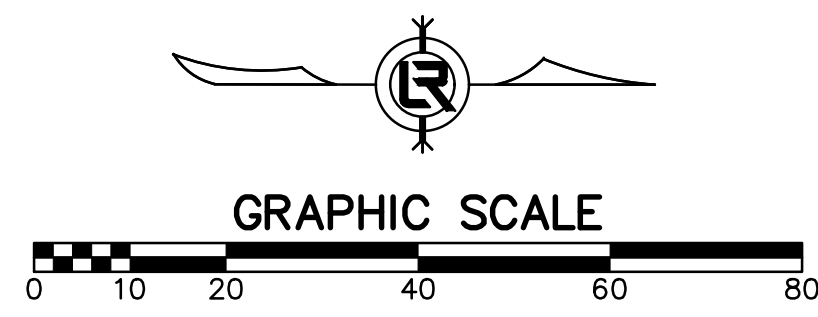
REVISIONS	DATE

CITY OF LITTLE ROCK, ARKANSAS
 WARD 1, 3 & 7 SIDEWALKS
 WARD 3 - WASHINGTON ST PLAN
 15% SUBMITTAL

DEPARTMENT OF PUBLIC WORKS
 CIVIL ENGINEERING
 701 W. MARKHAM
 LITTLE ROCK, ARKANSAS 72201

PRELIMINARY

DRAWN BY
 TM
 DESIGNED
 VJW & TM
 CHECKED
 VJW
 DATE
 07-01-2024
 SCALE
 1"=20' (22X34)
 PROJECT NO.
 24017
 SHEET NO.
 CB3



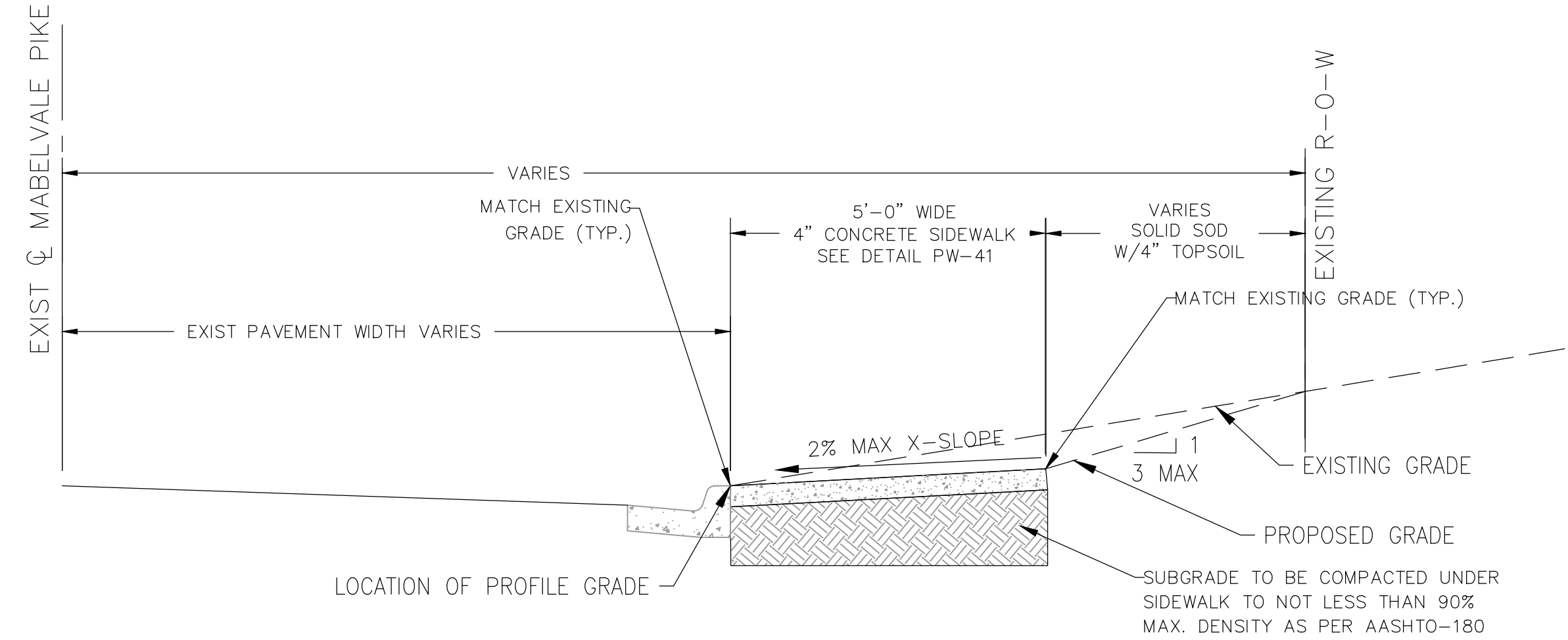
REVISIONS	DATE

CITY OF LITTLE ROCK, ARKANSAS
 WARD 1, 3 & 7 SIDEWALKS
 TYPICAL SECTIONS
 15% SUBMITTAL

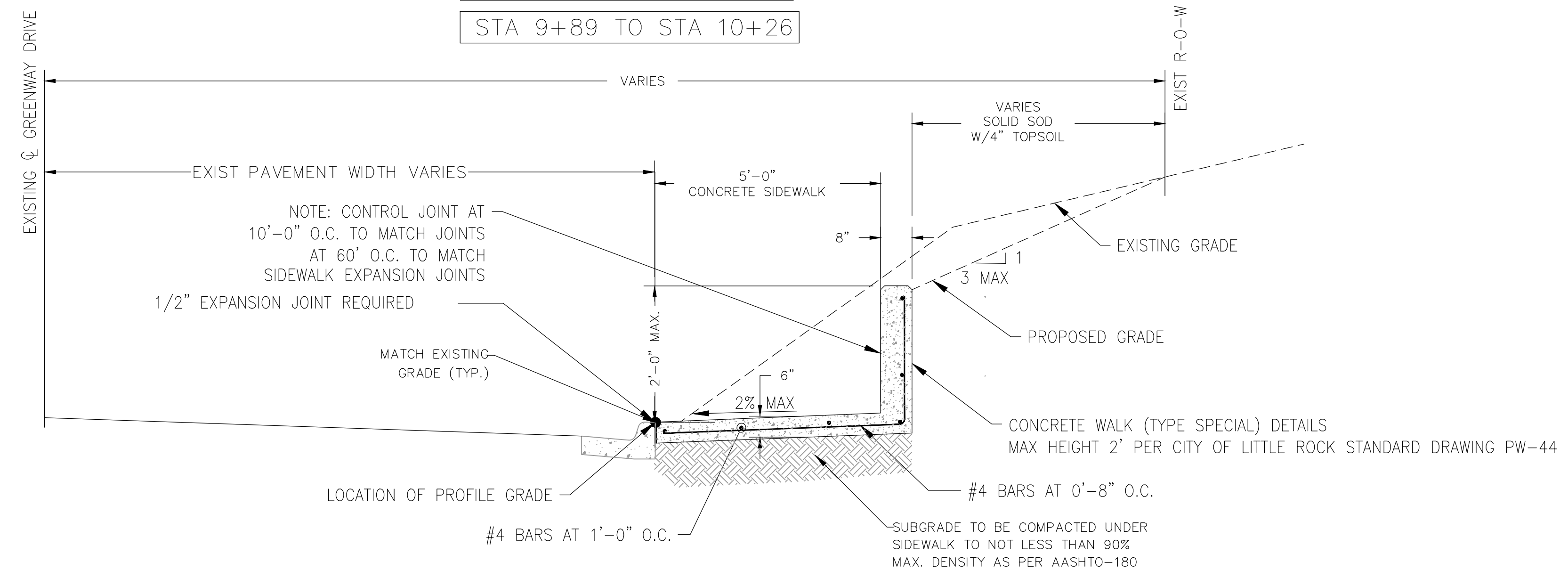
DEPARTMENT OF PUBLIC WORKS
 CIVIL ENGINEERING
 701 W. MARKHAM
 LITTLE ROCK, ARKANSAS 72201

PRELIMINARY

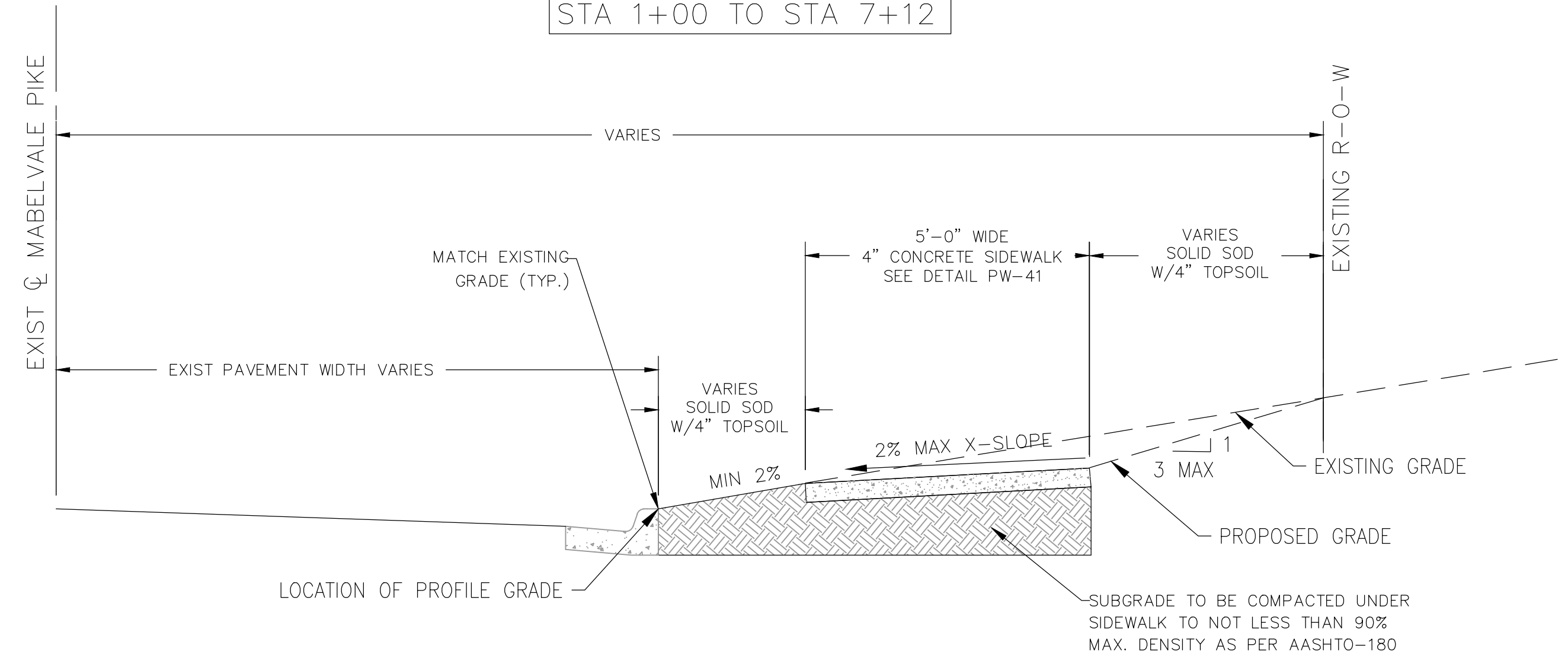
DRAWN BY
 TM
 DESIGNED
 VJW & TM
 CHECKED
 VJW
 DATE
 07-10-2024
 SCALE
 N.T.S.
 PROJECT NO.
 24017
 SHEET NO.
 CC1



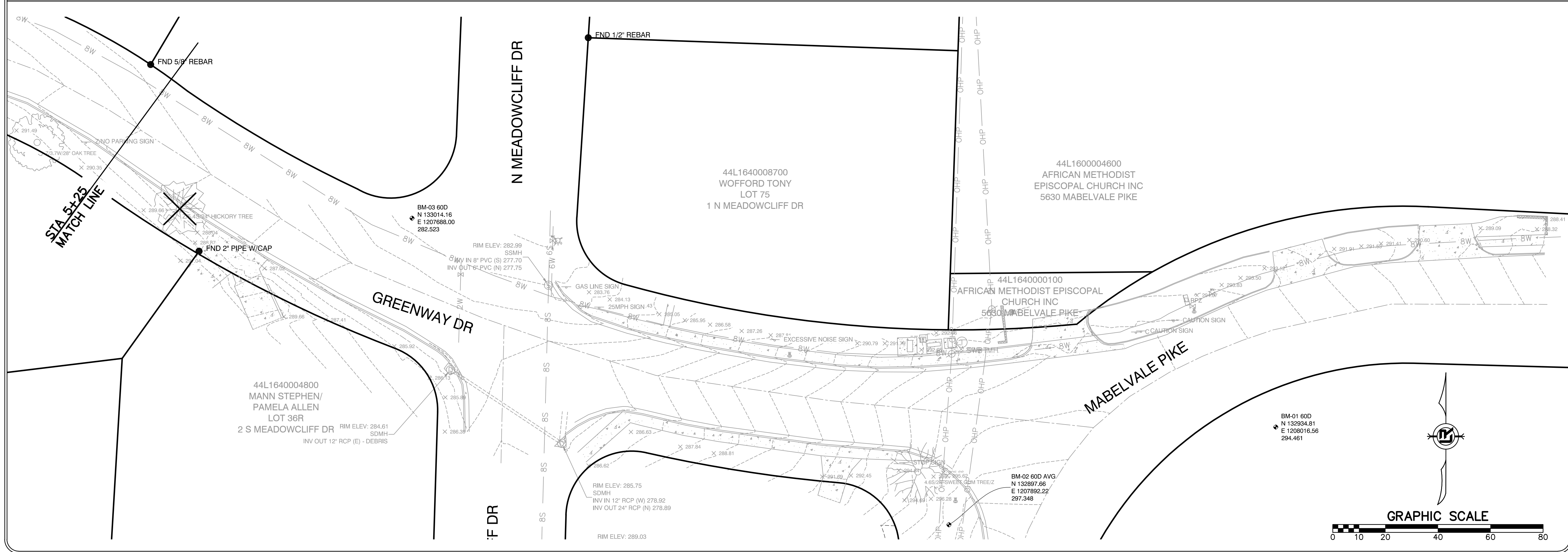
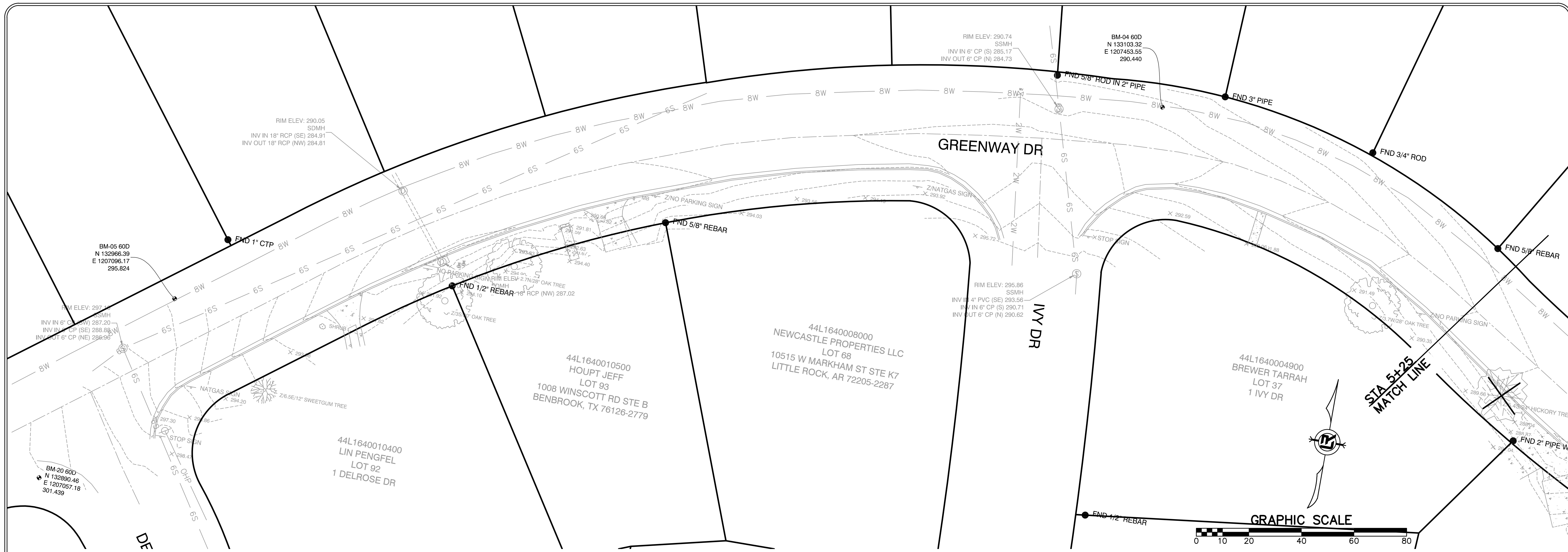
TYPICAL SECTION – 5' SIDEWALK IN MABELVALE PIKE
 N.T.S.
 STA 0+00 TO STA 1+00
 STA 9+89 TO STA 10+26



TYPICAL TURN-UP SIDEWALK SECTION IN GREENWAY DRIVE
 N.T.S.
 STA 1+00 TO STA 7+12



TYPICAL SECTION – 5' SIDEWALK WITH BUFFER IN MABELVALE PIKE
 N.T.S.
 STA 10+26 TO STA 11+60



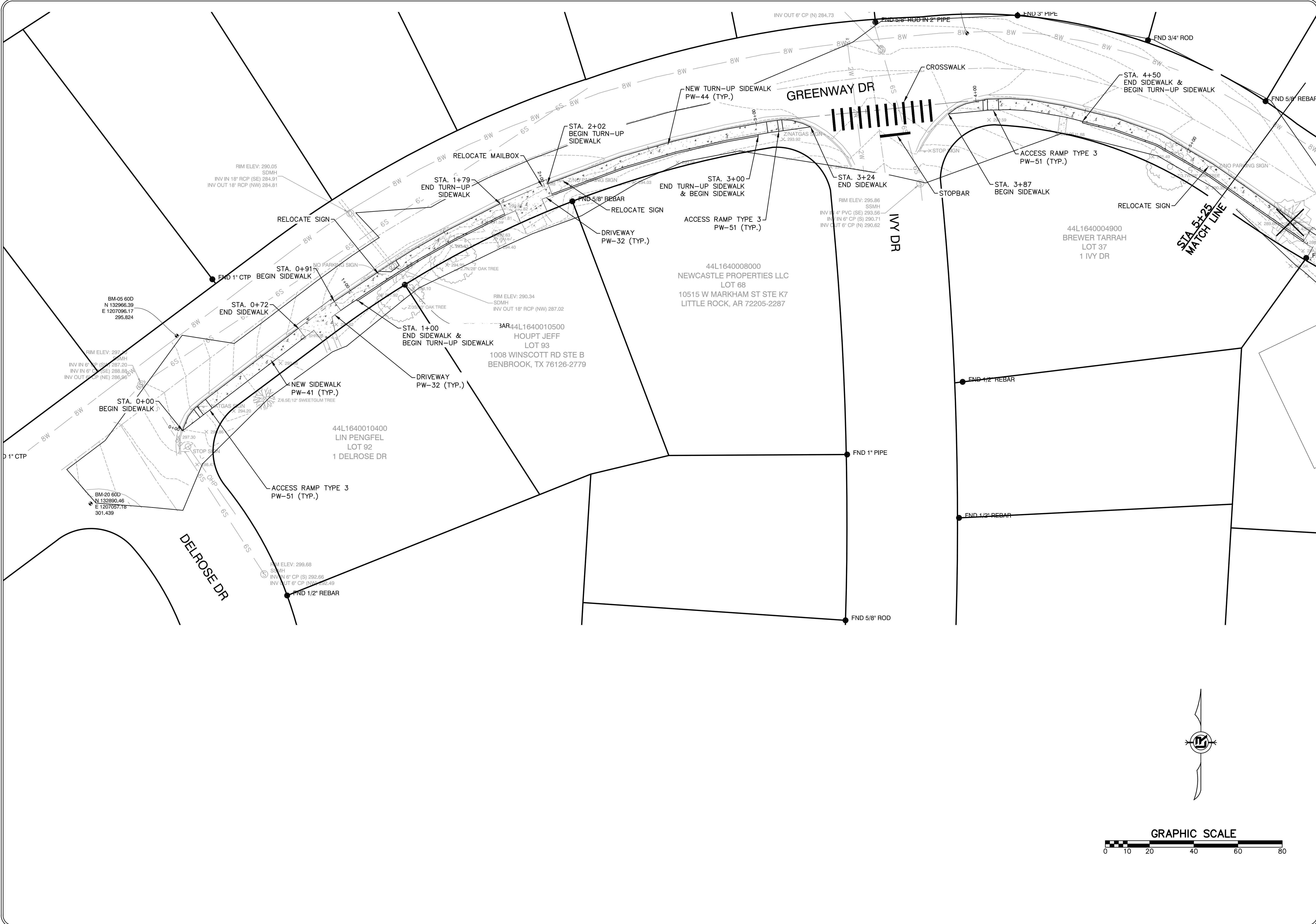
REVISIONS	DATE

CITY OF LITTLE ROCK, ARKANSAS
 WARD 1, 3 & 7 SIDEWALKS
 EXISTING CONDITIONS
 15% SUBMITTAL

DEPARTMENT OF PUBLIC WORKS
 CIVIL ENGINEERING
 701 W. MARKHAM
 LITTLE ROCK, ARKANSAS 72201

PRELIMINARY

DRAWN BY
 TM
 DESIGNED
 VJW & TM
 CHECKED
 VJW
 DATE
 07-10-2024
 SCALE
 1"=20' (22X34)
 PROJECT NO.
 24017
 SHEET NO.
 CC3



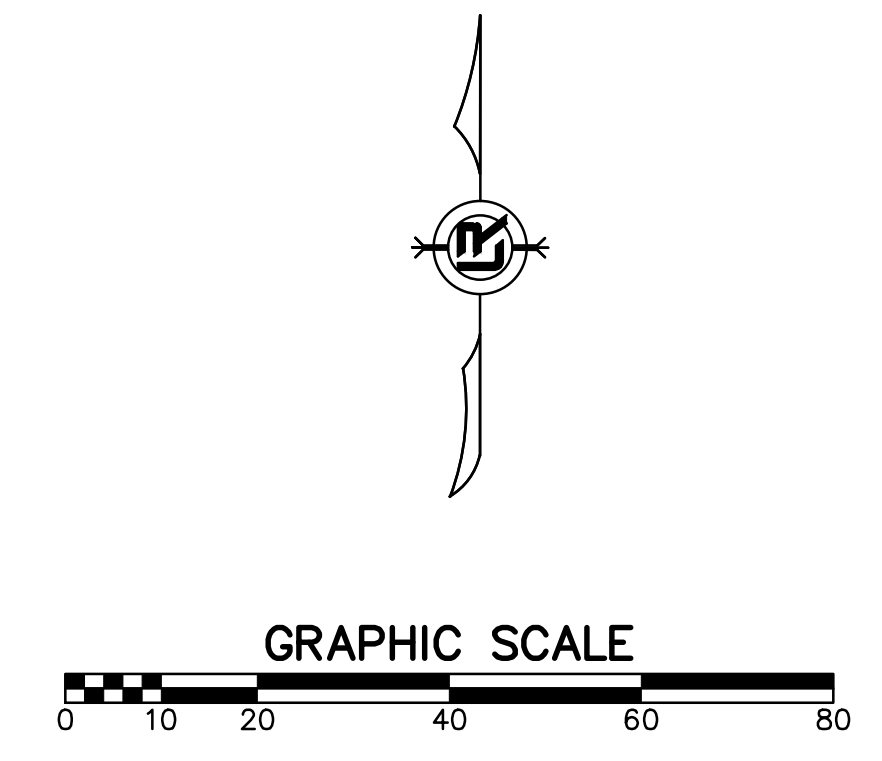
REVISIONS	DATE

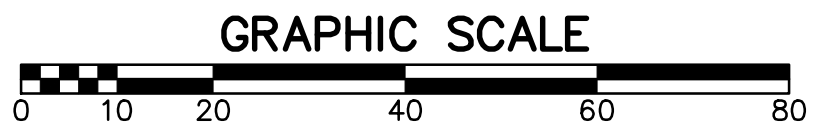
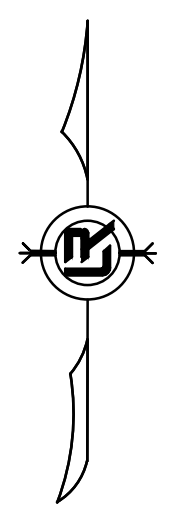
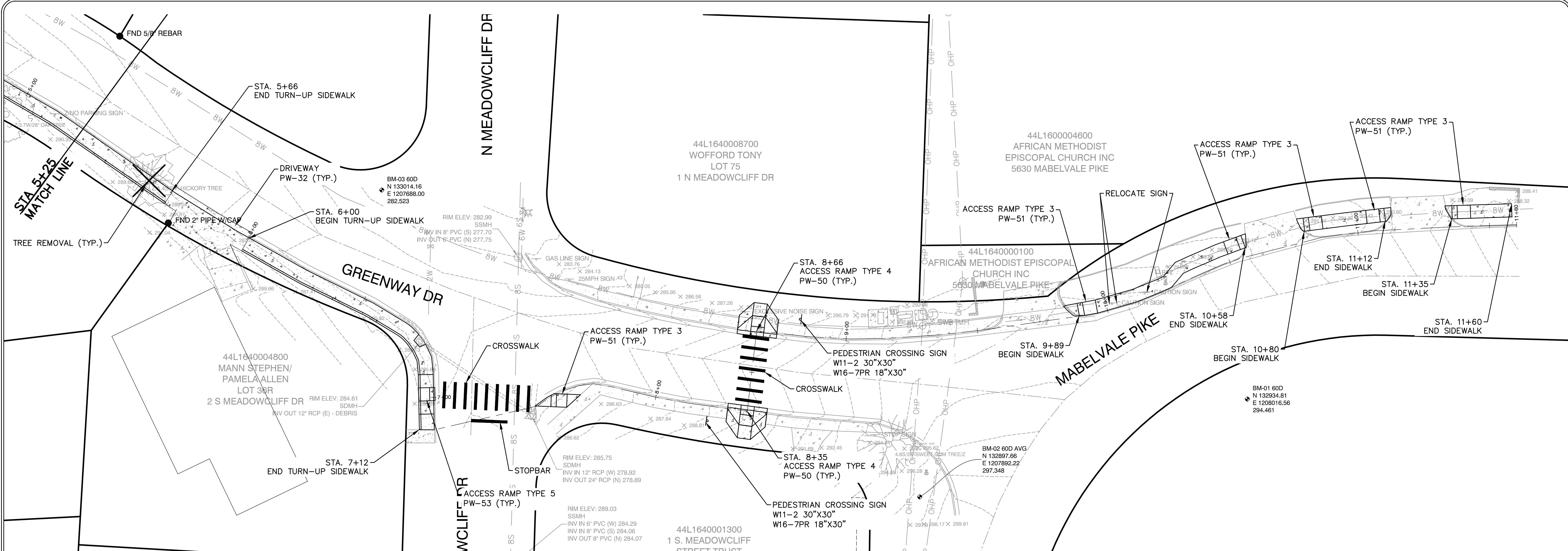
CITY OF LITTLE ROCK, ARKANSAS
WARD 1, 3 & 7 SIDEWALKS
WARD 7 - GREENWAY DR PLAN I
15% SUBMITTAL

DEPARTMENT OF PUBLIC WORKS
CIVIL ENGINEERING
701 W. MARKHAM
LITTLE ROCK, ARKANSAS 72201

PRELIMINARY

DRAWN BY
 TM
DESIGNED
 VJW & TM
CHECKED
 VJW
DATE
 07-02-2024
SCALE
 1"=20' (22X34)
PROJECT NO.
 24017
SHEET NO.
 CC3





REVISIONS	DATE

CITY OF LITTLE ROCK, ARKANSAS
 WARD 1, 3 & 7 SIDEWALKS
 WARD 7 - GREENWAY DR PLAN II
 15% SUBMITTAL

DEPARTMENT OF PUBLIC WORKS
 CIVIL ENGINEERING
 701 W. MARKHAM
 LITTLE ROCK, ARKANSAS 72201

PRELIMINARY

DRAWN BY
 TM
 DESIGNED
 VJW & TM
 CHECKED
 VJW
 DATE
 07-02-2024
 SCALE
 1"=20' (22X34)
 PROJECT NO.
 24017
 SHEET NO.
 CC4