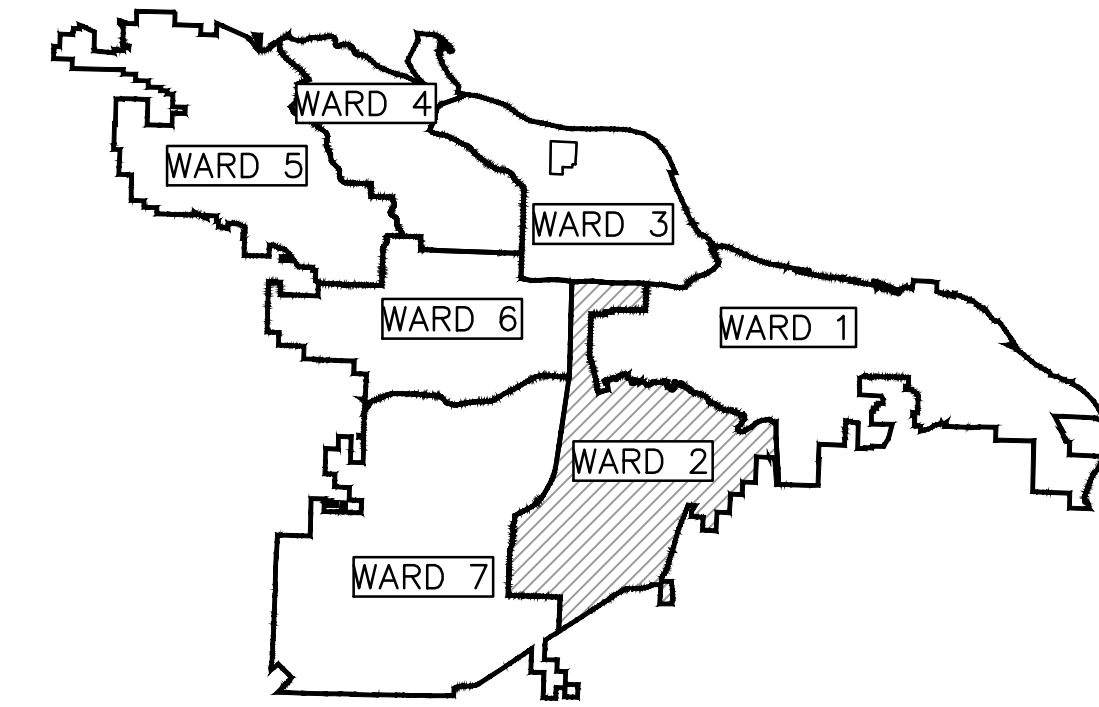


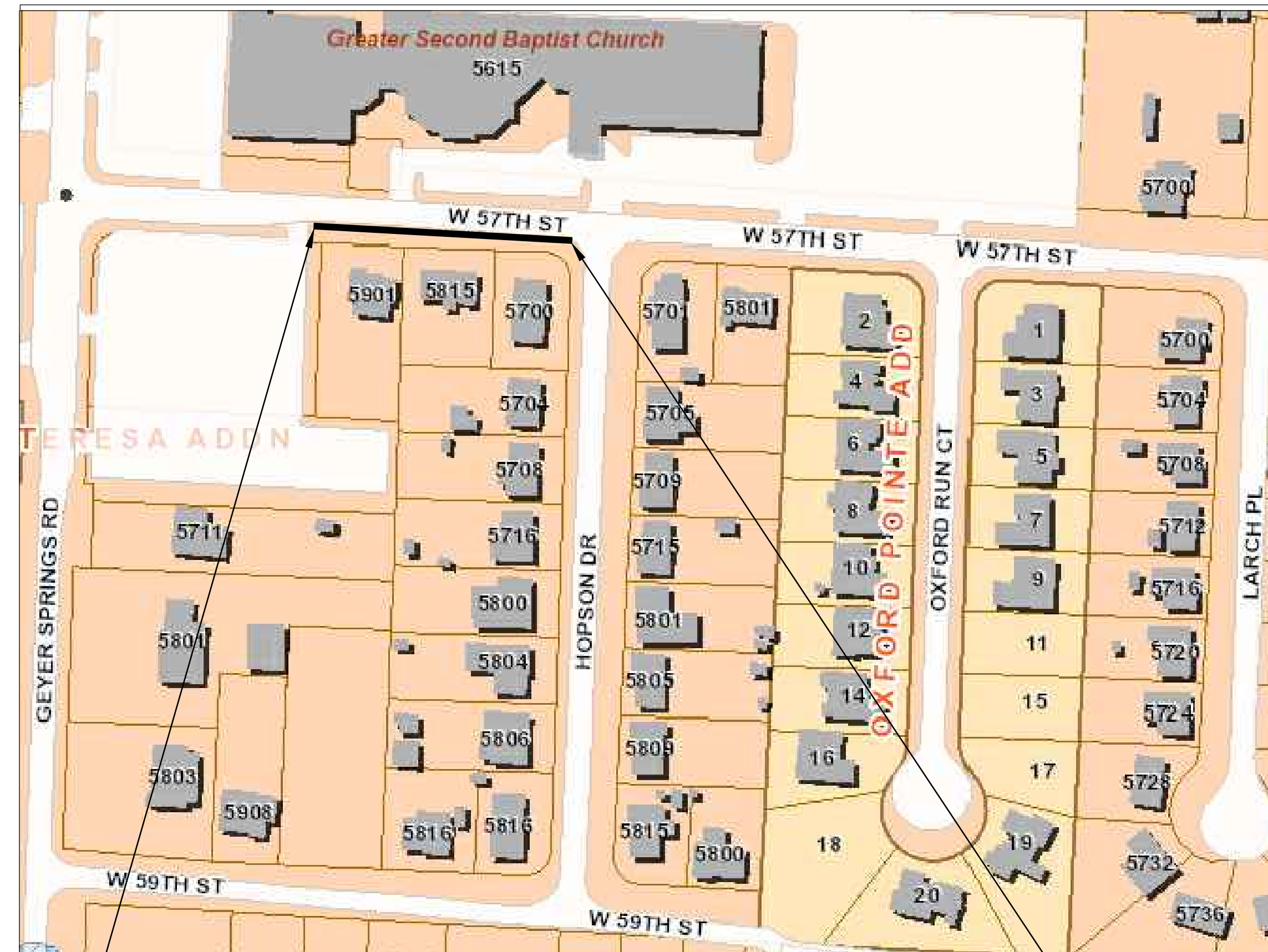
CLR PROJECT 02-22-DR-06 #57TH STREET DRAINAGE



PROJECT LOCATION - WARD 2

INDEX OF SHEETS:

- C1 COVER SHEET
- C2 GENERAL NOTES, LEGEND AND QUANTITIES
- C3 TYPICAL SECTIONS
- C4 EXISTING CONDITIONS
- C5 PLAN & PROFILE
- C6 DRIVEWAY DETAILS
- C7 CROSS SECTIONS
- C8 PROJECT LAYOUT
- C9 EROSION CONTROL



BEGIN PROJECT
57TH STREET
CL STA 10+54.18
NORTHING = 132897.4412
EASTING = 1209480.5066

*PROJECT
LOCATION*

END PROJECT
57TH STREET
CL STA 12+91.44
NORTHING = 132883.4800
EASTING = 1209717.8943

DEPARTMENT OF PUBLIC WORKS
CIVIL ENGINEERING
701 WEST MARKHAM STREET
LITTLE ROCK, ARKANSAS 72201

**2023-2025
BOND PROGRAM**



SURVEYOR:



4701 NORTHSHORE DRIVE
NORTH LITTLE ROCK, AR 72118
PHONE: 501-376-3633
WWW.GARVERUSA.COM

ENGINEER OF RECORD:



2020 WEST 3RD STREET, SUITE 504
LITTLE ROCK, AR 72205
PHONE: 501-215-5807 FAX: 501-227-8302
WWW.ICONICCG.COM



REVISIONS DATE

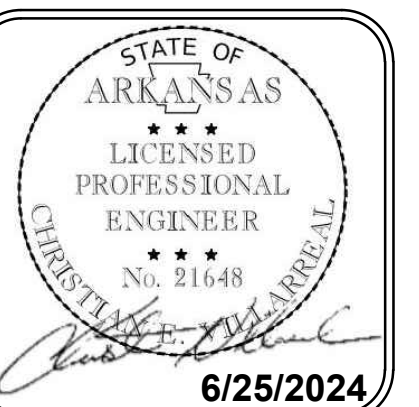
REVISIONS	DATE

CITY OF LITTLE ROCK, ARKANSAS
#57TH STREET DRAINAGE

COVER SHEET



DEPARTMENT OF PUBLIC WORKS
CIVIL ENGINEERING
701 W. MARKHAM
LITTLE ROCK, ARKANSAS 72201



DRAWN BY


BJ
DESIGNED
BJ
CHECKED
CV
DATE
6/25/2024
SCALE
N.T.S.
PROJECT NO.
02-22-DR-06
SHEET NO.
C1

CLR PROJECT 02-22-DR-06			
		2024/06/24	
ITEM #	ITEM DESCRIPTION	UNIT	QUANTITY
2.01	SITE PREPARATION	LS	1
3.01	UNCLASSIFIED EXCAVATION	CY	35
3.07	COMPACTED EMBANKMENT	CY	88
4.01	AGGREGATE BASE COURSE	TON	12
5.01	TACK COAT	GAL	5
6.01	ACHM SURFACE COURSE	TON	5
7.06	CONCRETE DRIVEWAY (6" THICK), STANDARD FINISH	SF	497
8.03	CONCRETE CURB & GUTTER (CLASS 3)	LF	237
10.01	JUNCTION BOX (4')	EA	1
10.04A	CURB INLET- 4'X6' BOX	EA	1
10.07	WING 3' EXTENSION	EA	1
13.21	STORM DRAIN PIPE, 24" SIDE DRAIN	LF	232
13.61	TIE TO EXISTING JUNCTION BOX	EA	1
14.01	SOLID SODDING (BERMUDA) (INCLUDES 4" TOPSOIL)	SY	350
16.01	MAINTENANCE OF TRAFFIC	LS	1
19.01	FINAL CLEAN-UP	LS	1
24.09	SEDIMENT BARRIER, BLOCK (SD4)	EA	1
24.11	SILT FENCE - TYPE A (SFA)	LF	454
26.01	TRENCH & EXCAVATION SAFETY	LS	1
SP	ASBUILT SURVEY	LS	1

EXISTING	PROPOSED
IRON ROD	PROPOSED CONTOUR
PK NAIL	PROPOSED SPOT ELEVATION
R.R. SPIKE	PROPOSED SPOT CURB ELEVATION
CONC. MONUMENT	STORM SEWER - PIPE
WATER VALVE	STORM SEWER - MITERED END SECTION
WATER METER	STORM SEWER - GRATE INLET
FIRE HYDRANT	STORM SEWER - JUNCTION BOX
GAS METER	STORM SEWER - FLARED END SECTION
GAS VALVE	STORM SEWER - HEADWALL
CLEAN-OUT	STORM SEWER - SINGLE WING
GUARD POST (BOLLARD)	STORM SEWER - DOUBLE WING
SIGN POST	STORM SEWER - AREA INLET
BENCHMARK	GRADE BREAK LINE
STORM SEWER MANHOLE	HIGH POINT
SANITARY SEWER MANHOLE	LOW POINT
TELEPHONE MANHOLE	CUT LINE
ELECTRIC MANHOLE	FILL LINE
TELEPHONE BOX	SANITARY SEWER PIPE
ELECTRIC BOX	SANITARY SEWER MANHOLE
CABLE BOX	PROPOSED CURB
UTILITY POLE	PROPOSED CONCRETE
GUY WIRE	PROPOSED ASPHALT
LIGHT POLE	1-1/2" ASPHALT MILL AND OVERLAY
POST OR POLE (TYPE AS NOTED)	CONSTRUCTION - ENTRANCE/EXIT
MAILBOX	CHECK DAM
DECIDUOUS TREE	DIVERSION BERM
EVERGREEN/CONIFEROUS TREE	DOWNDRAIN STRUCTURE - TEMPORARY
BUSH	ROCK DAM
PROPERTY LINE	SEDIMENT BARRIER - SILT FENCE
SETBACK LINE	SEDIMENT BARRIER - GRAVEL RING
EASEMENT LINE	SEDIMENT BARRIER - BLOCK & GRAVEL
CURB	SEDIMENT BARRIER - BLOCK
FENCE	TEMPORARY SEDIMENT BASIN
OVERHEAD ELECTRIC	SILT FENCE - TYPE A
OVERHEAD TELEPHONE	SILT FENCE - TYPE B
OVERHEAD CABLE	SILT FENCE - TYPE C
UNDERGROUND TELEPHONE	STORM DRAIN OUTLET PROTECTION
UNDERGROUND ELECTRIC	SURFACE ROUGHENING
UNDERGROUND CABLE	DISTURBED AREA STABILIZATION -TEMPORARY STABILIZATION
FIBER OPTIC	DISTURBED AREA STABILIZATION -TEMPORARY GRASSING
WATER LINE	DISTURBED AREA STABILIZATION -PERMANENT GRASSING
SEWER LINE	MATTING/BLANKETS
GAS LINE	
STORM SEWER/CULVERT	
EDGE OF WOODS	
CONTOUR LINE	

REVISIONS	DATE

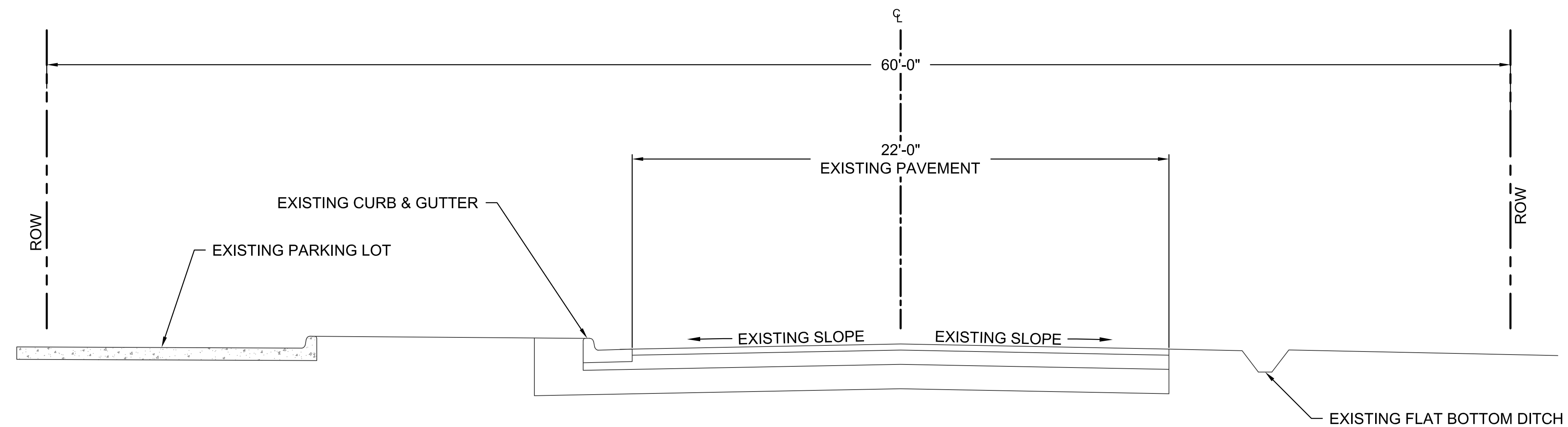
CITY OF LITTLE ROCK, ARKANSAS
#57TH STREET DRAINAGE
GENERAL NOTES, LEGEND AND QUANTITIES


 DEPARTMENT OF PUBLIC WORKS
 CIVIL ENGINEERING
 701 W. MARKHAM
 LITTLE ROCK, ARKANSAS 72201

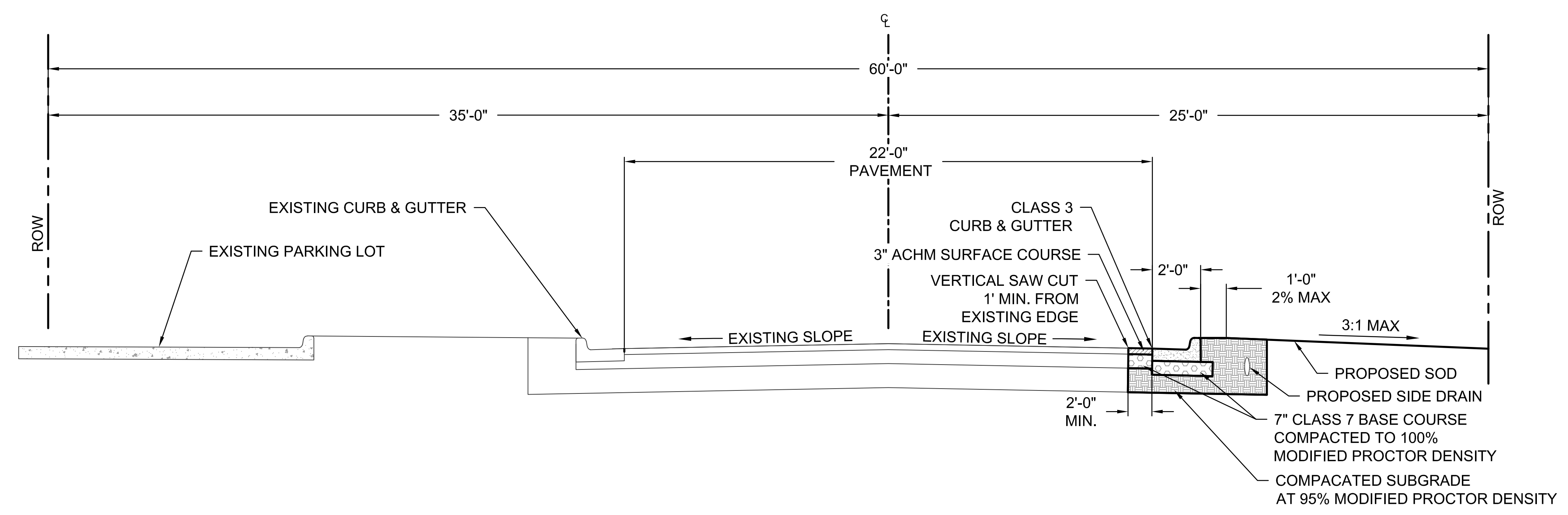

 STATE OF ARKANSAS
 LICENSED PROFESSIONAL ENGINEER
 No. 21648
 6/25/2024

DRAWN BY	BJ
DESIGNED	BJ
CHECKED	CV
DATE	6/25/2024
SCALE	N.T.S
PROJECT NO.	02-22-DR-06
SHEET NO.	C2

REVISIONS	DATE



EXISTING TYPICAL SECTION



PROPOSED TYPICAL SECTION

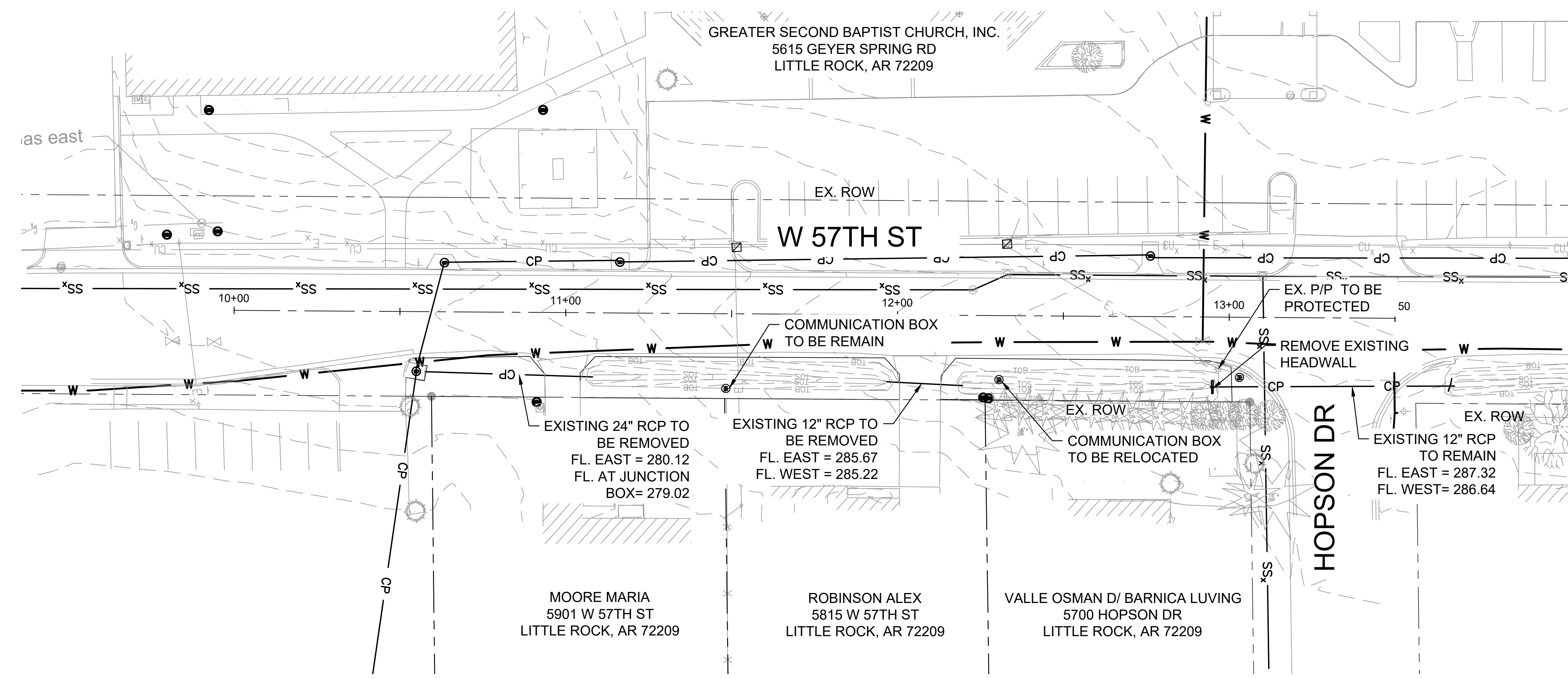
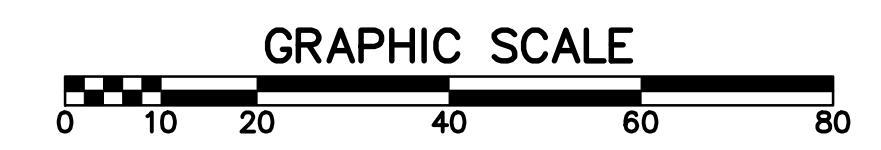
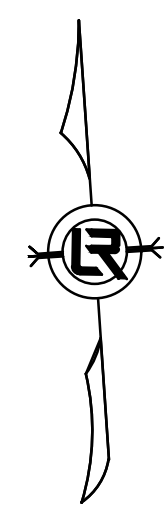
CITY OF LITTLE ROCK, ARKANSAS
 #57TH STREET DRAINAGE
 TYPICAL SECTIONS

DEPARTMENT OF PUBLIC WORKS
 CIVIL ENGINEERING
 701 W. MARKHAM
 LITTLE ROCK, ARKANSAS 72201

STATE OF ARKANSAS
 LICENSED PROFESSIONAL ENGINEER
 No. 21648
 6/25/2024

DRAWN BY
 BJ
 DESIGNED
 BJ
 CHECKED
 CV
 DATE
 6/25/2024
 SCALE
 NTS
 PROJECT NO.
 02-22-DR-06
 SHEET NO.
C3

REVISIONS	DATE



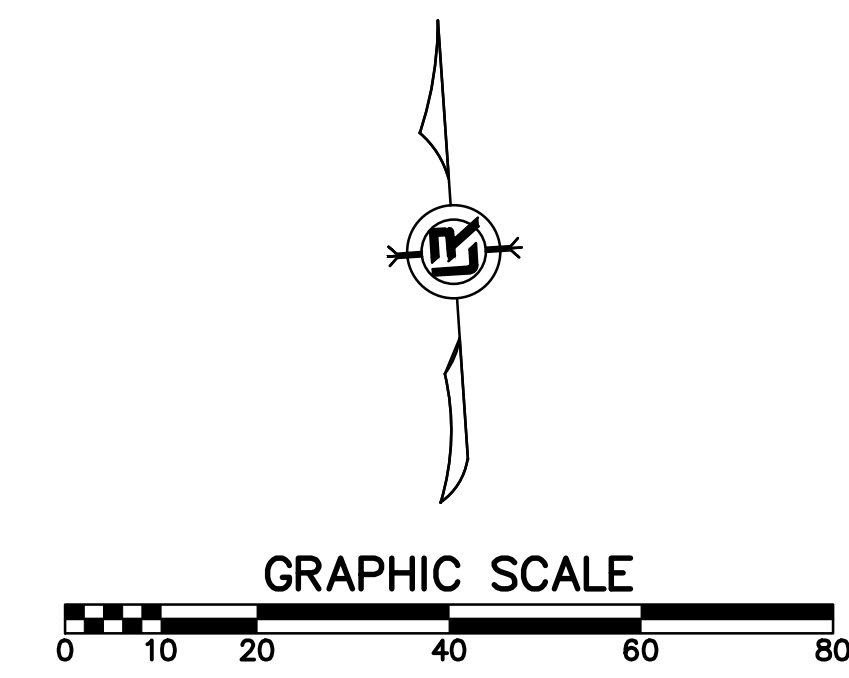
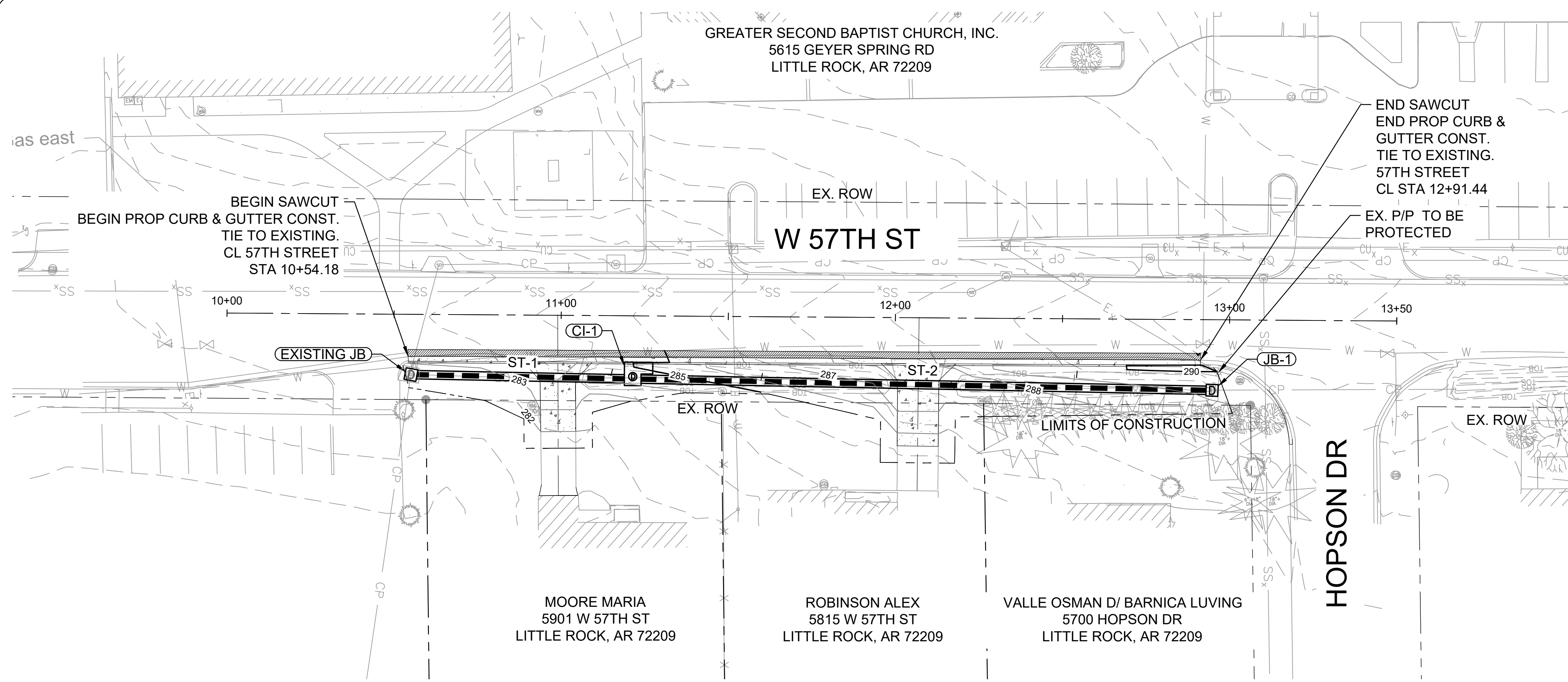
- NOTES:
- REMOVAL OF EXISTING DRAINAGE PIPE AND STRUCTURES ARE SUBSIDIARY TO SITE PREPARATION.

CITY OF LITTLE ROCK, ARKANSAS
#57TH STREET DRAINAGE
 EXISTING CONDITIONS

DEPARTMENT OF PUBLIC WORKS
 CIVIL ENGINEERING
 701 W. MARKHAM
 LITTLE ROCK, ARKANSAS 72201

STATE OF ARKANSAS
 LICENSED PROFESSIONAL ENGINEER
 No. 21648
 CHRISTOPHER J. [Signature]
 6/25/2024

DRAWN BY
 B.J.
 DESIGNED
 B.J.
 CHECKED
 CV
 DATE
 6/25/2024
 SCALE
 1" = 20'
 PROJECT NO.
 02-22-DR-06
 SHEET NO.
C4



- NOTES:
1. REFER TO CITY OF LITTLE ROCK STANDARD DETAILS FOR DRAINAGE DETAILS.
 2. FOR CURB AND GUTTER DETAILS REFER TO CITY OF LITTLE ROCK STANDARD DETAIL PW-29 CURB & GUTTER SECTIONS RESIDENTIAL & COLLECTOR STREETS.

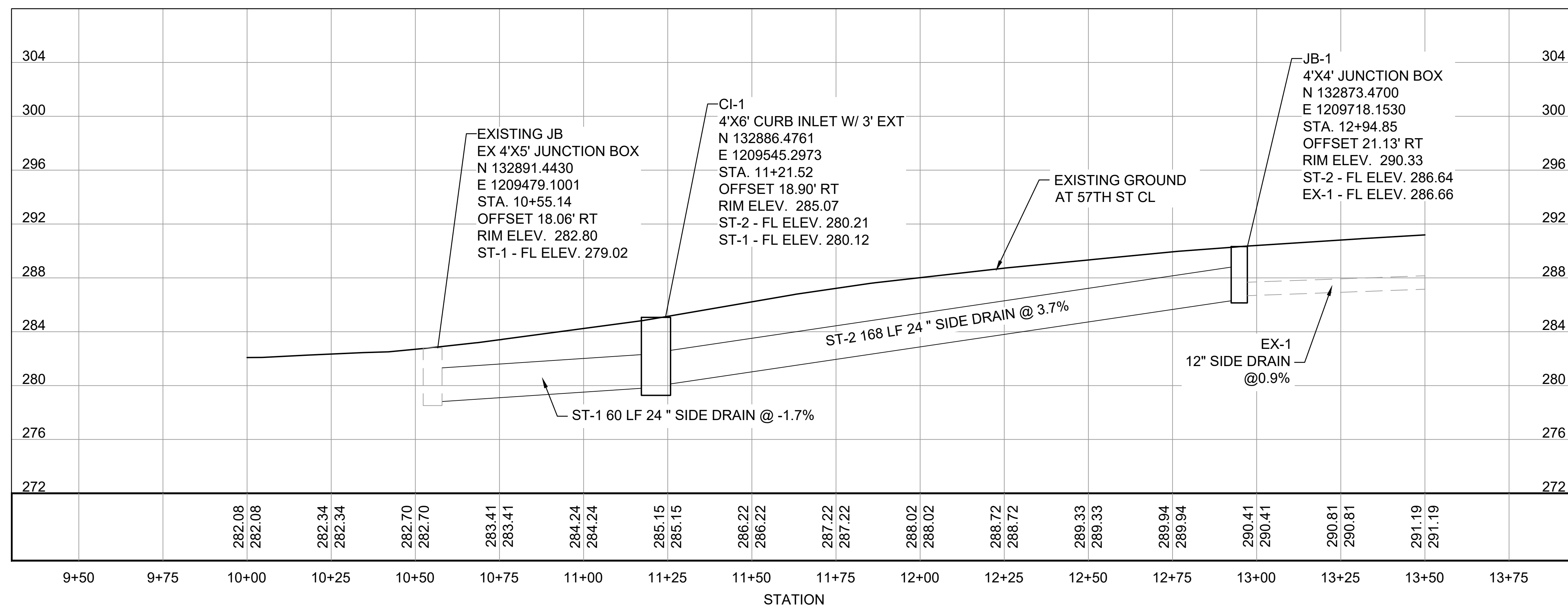
REVISIONS	DATE

CITY OF LITTLE ROCK, ARKANSAS
#57TH STREET DRAINAGE
PLAN & PROFILE

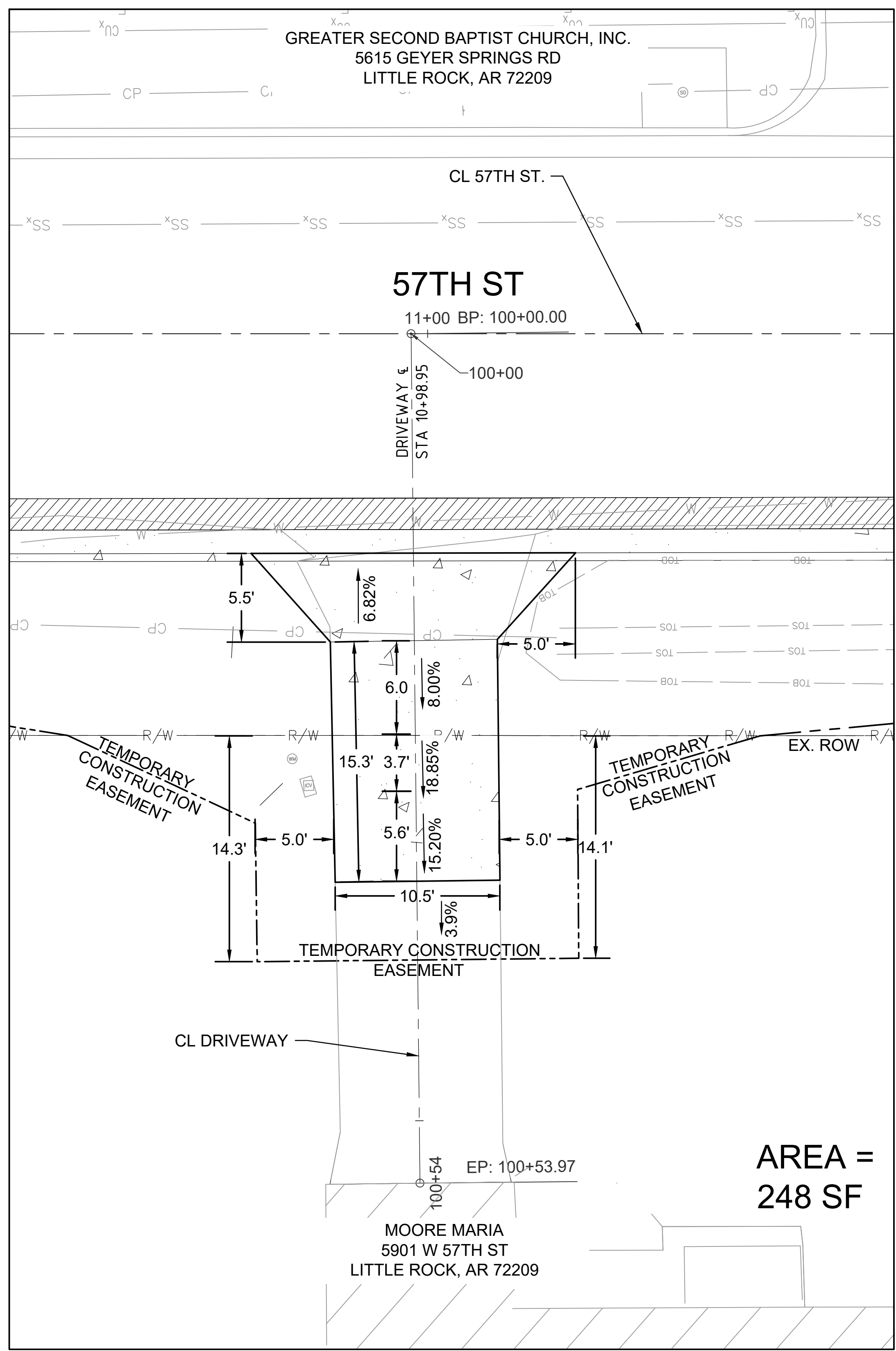
DEPARTMENT OF PUBLIC WORKS
CIVIL ENGINEERING
701 W. MARKHAM
LITTLE ROCK, ARKANSAS 72201

STATE OF ARKANSAS
LICENSED PROFESSIONAL ENGINEER
No. 21648
6/25/2024

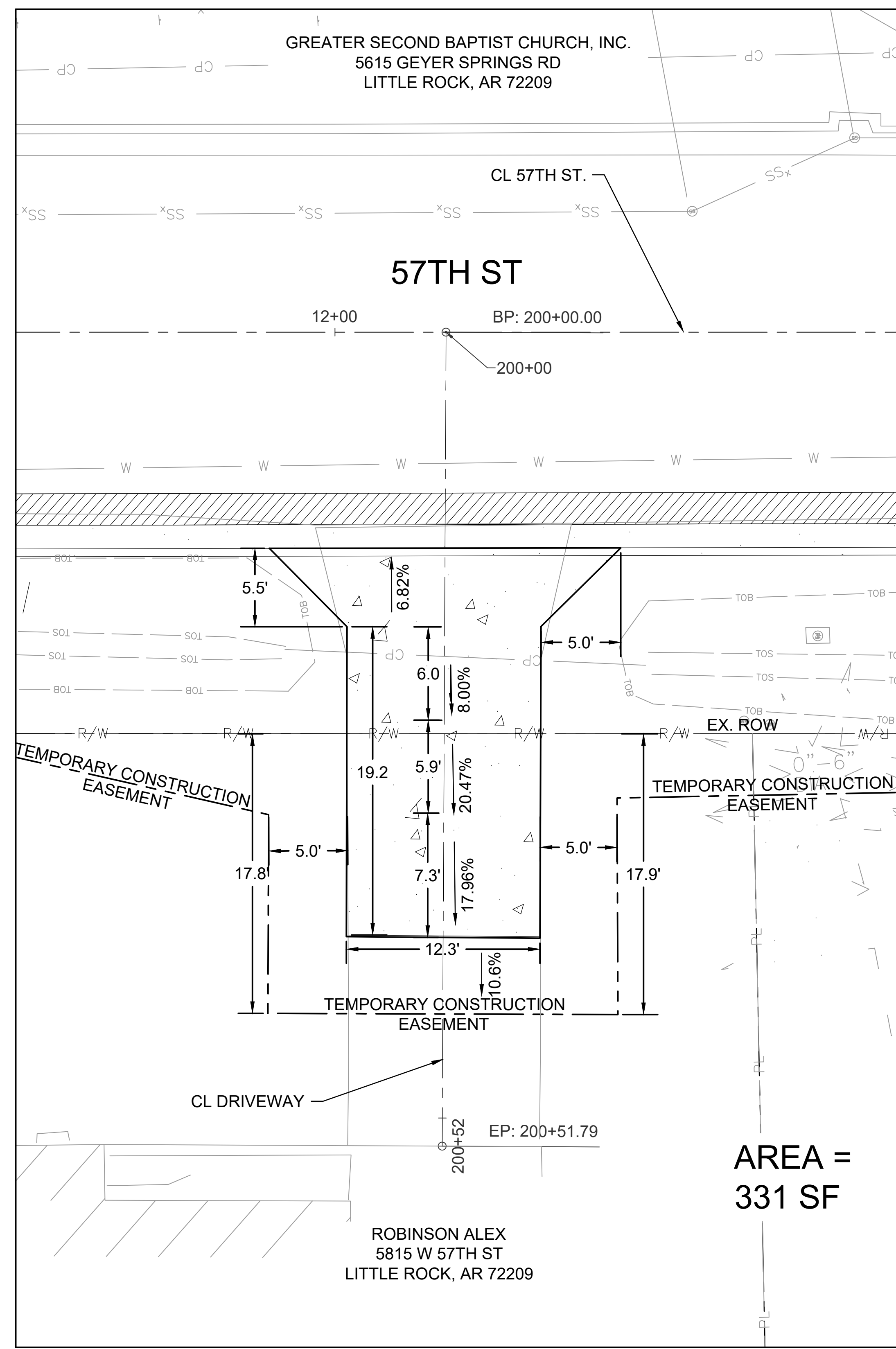
DRAWN BY
BJ
DESIGNED
BJ
CHECKED
CV
DATE
6/25/2024
SCALE
H: 1" = 20' V: 1" = 5'
PROJECT NO.
02-22-DR-06
SHEET NO.
C5



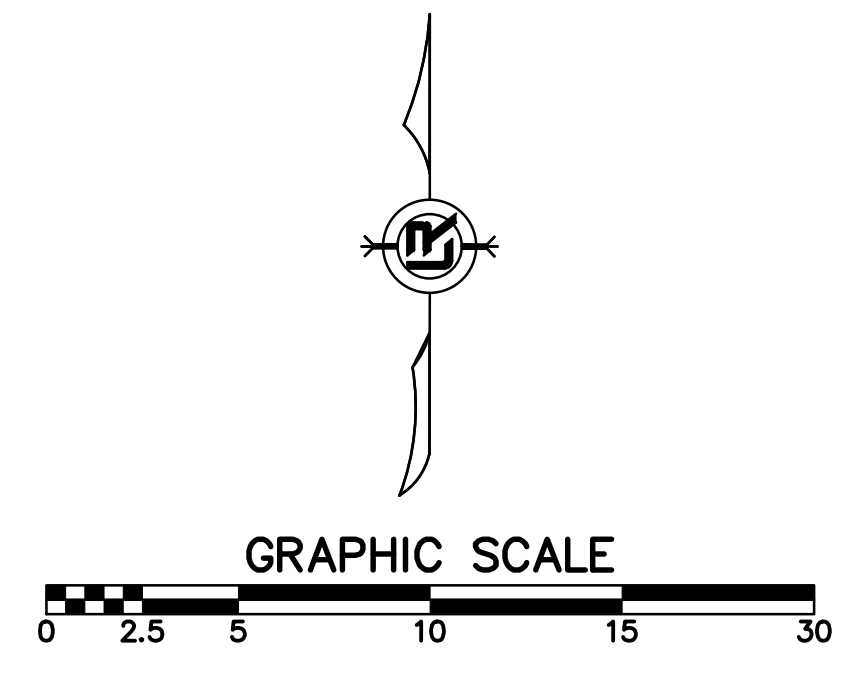
REVISIONS	DATE



**DRIVEWAY AT
STA 10+98.95**




**DRIVEWAY AT
STA 12+07.07**



NOTES:

1. DRIVEWAYS HAVE A 1.5" LIP AT THE FACE OF THE CURB.
2. ALL DRIVEWAY GRADES SHALL BE ROUND WITH A 2' RADIUS.
3. DRIVEWAY APRONS SHALL BE PLACED MONOLITHICALLY WITH GUTTER SECTION.
4. FOR EXPANSION JOINT PLACEMENT REFER TO CITY OF LITTLE ROCK STANDARD DETAIL PW-30 RESIDENTIAL DRIVEWAY DETAILS (BUFFERED SIDEWALK)

**CITY OF LITTLE ROCK, ARKANSAS
#57TH STREET DRAINAGE
DRIVEWAY DETAILS**

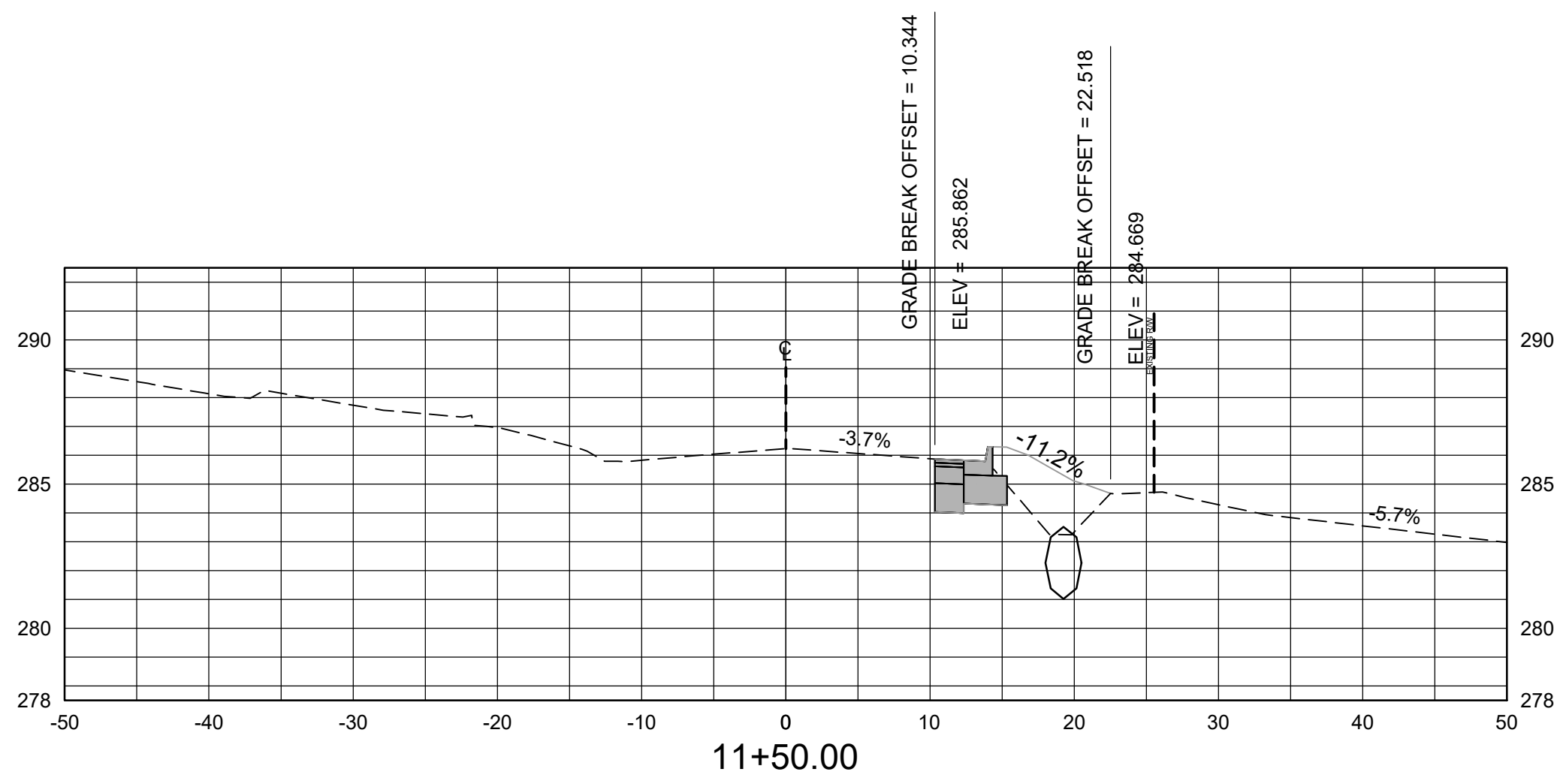

 DEPARTMENT OF PUBLIC WORKS
 CIVIL ENGINEERING
 701 W. MARKHAM
 LITTLE ROCK, ARKANSAS 72201

STATE OF ARKANSAS
 LICENSED PROFESSIONAL ENGINEER
 No. 21648
 6/25/2024

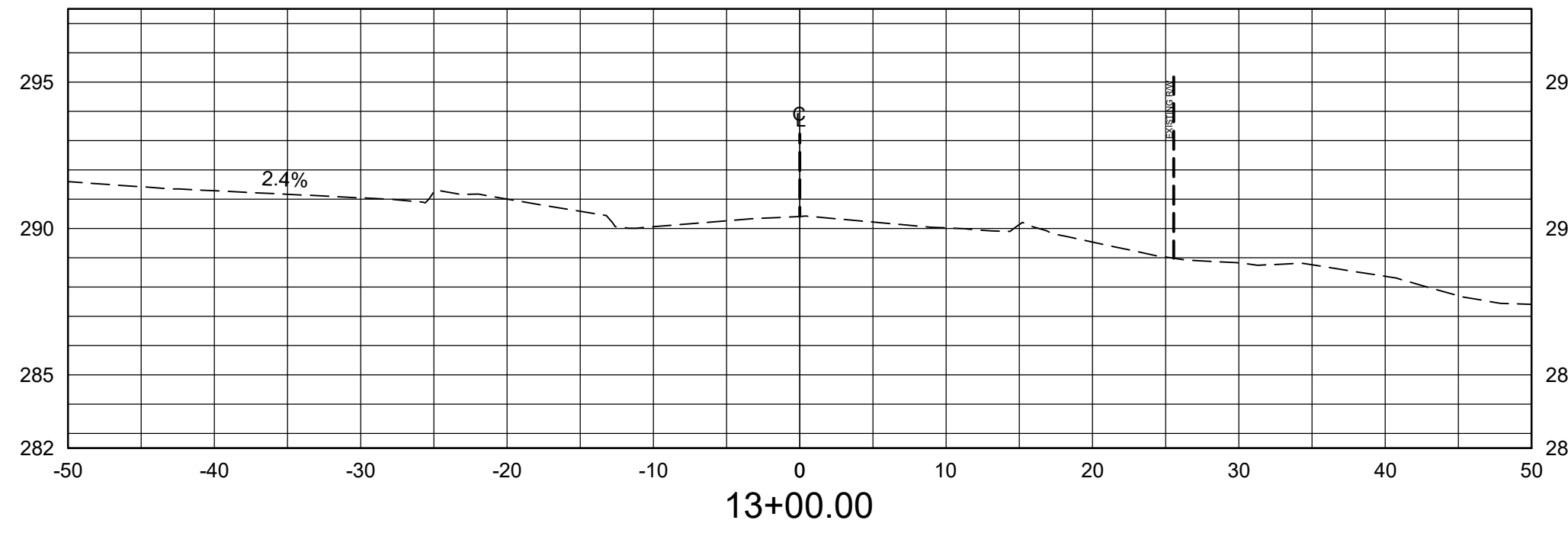
DRAWN BY BJ
DESIGNED BJ
CHECKED CV
DATE 6/25/2024
SCALE 1" = 5'
PROJECT NO. 02-22-DR-06
SHEET NO. C6

REVISIONS	DATE

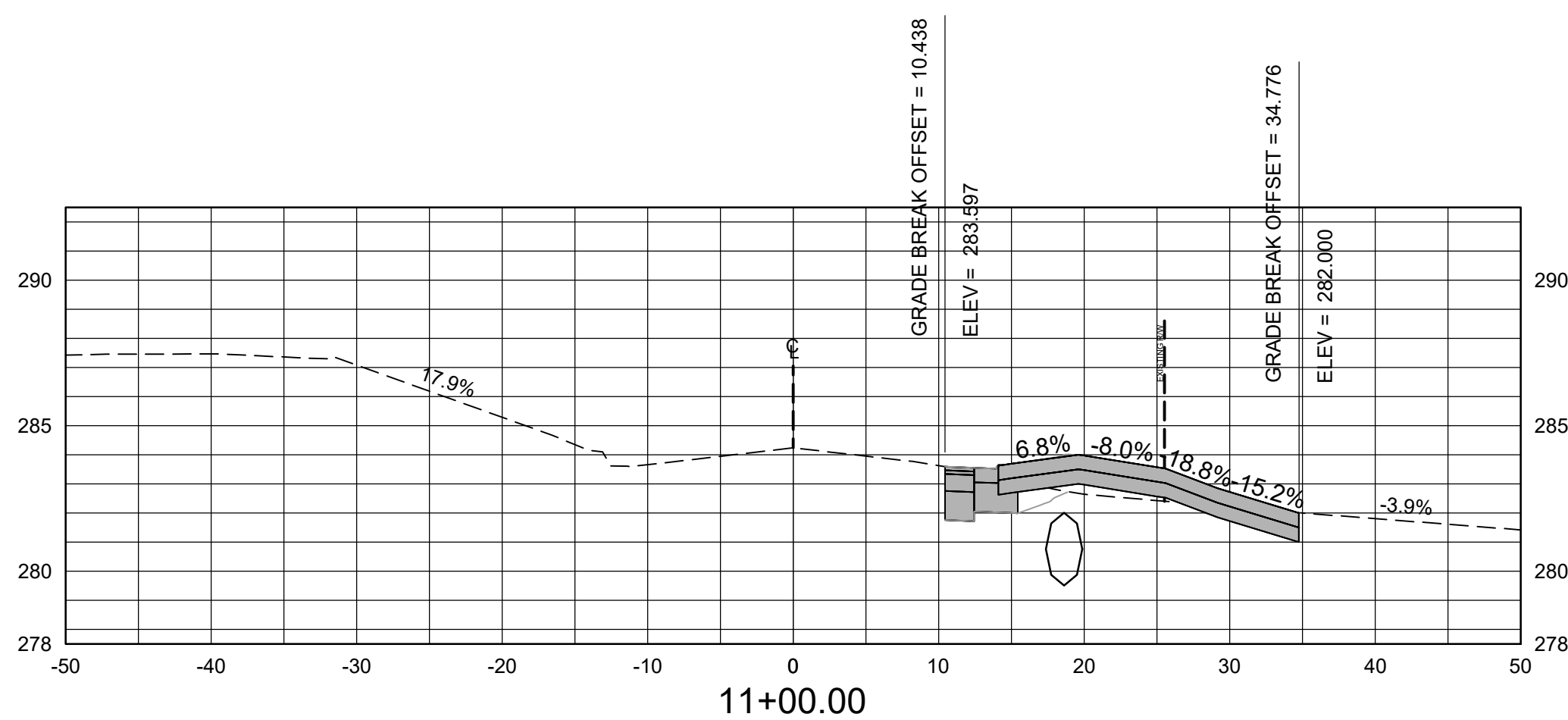
CITY OF LITTLE ROCK, ARKANSAS
#57TH STREET DRAINAGE
CROSS SECTIONS



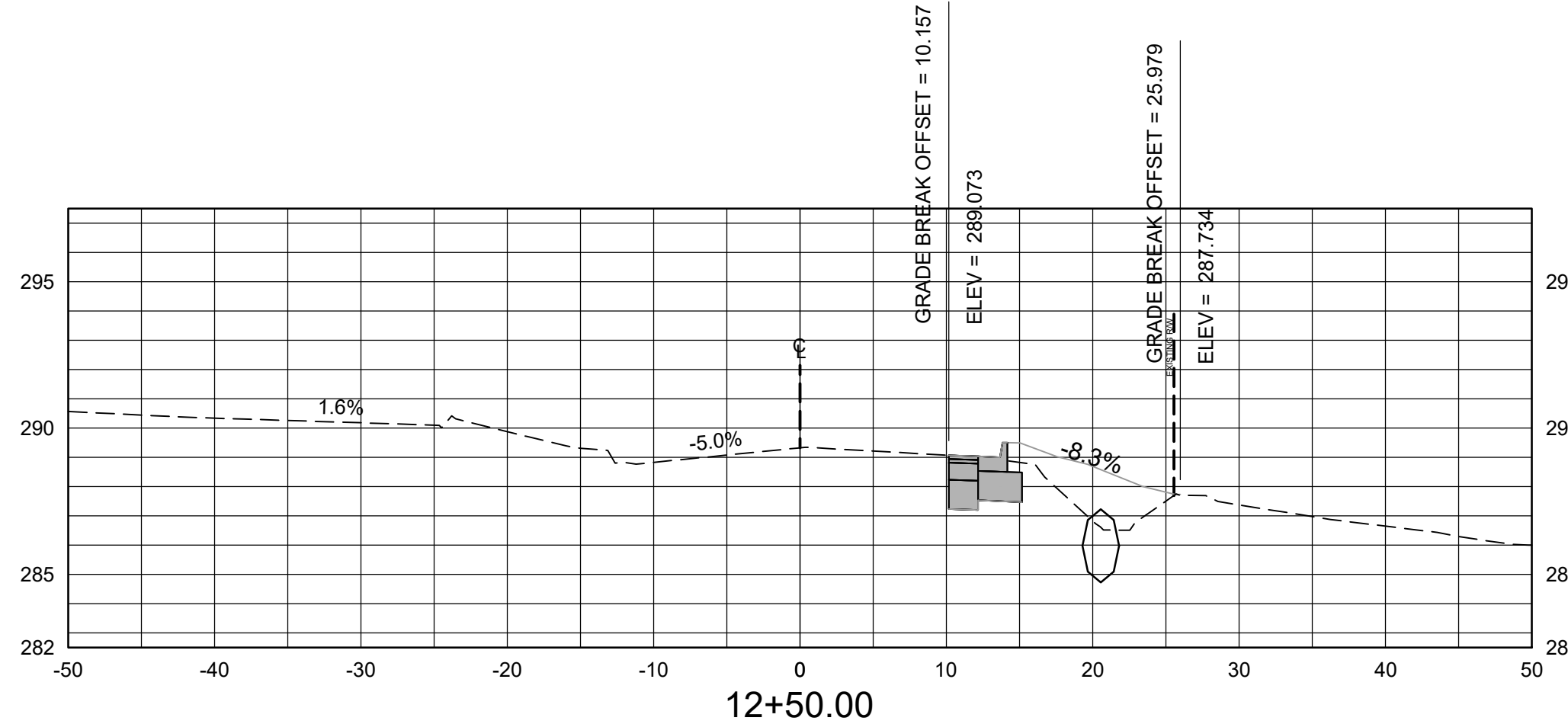
Total Volume at Station 11+50.00	
Cut Area	7.26
Fill Area	12.90
Cut Vol	15.30
Fill Vol	27.08
Cum Cut Vol	23.87
Cum Fill Vol	42.21
Net Vol	-18.34



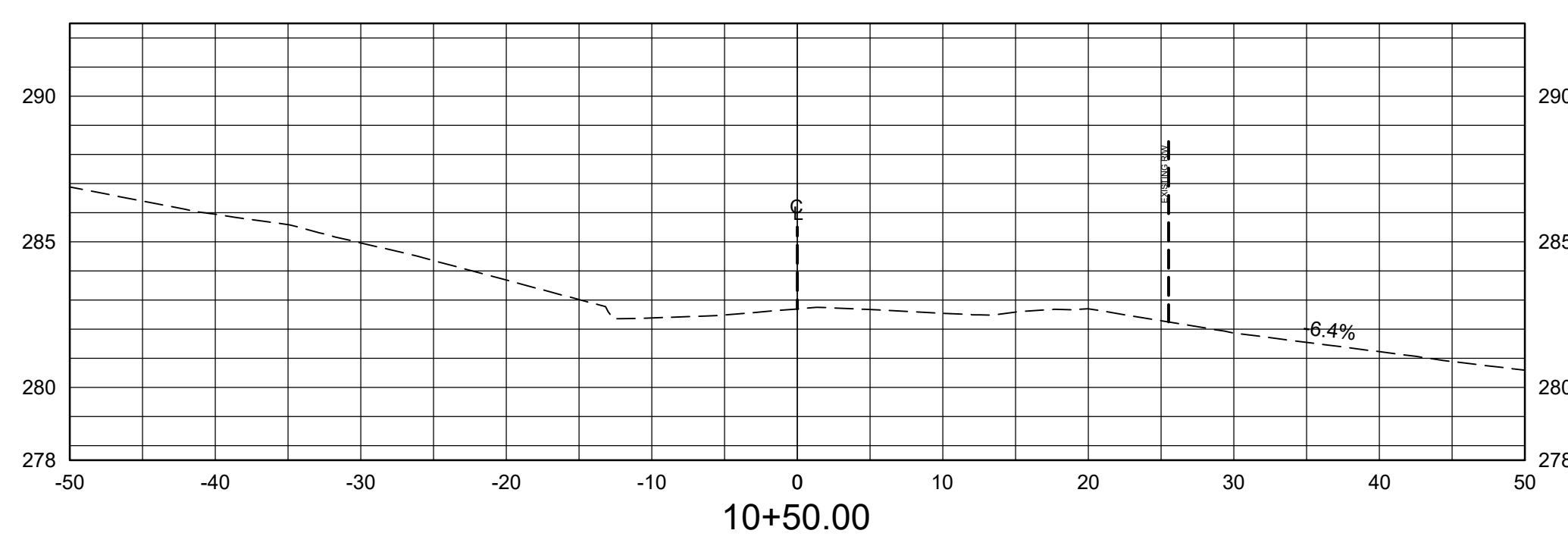
Total Volume at Station 13+00.00	
Cut Area	0.00
Fill Area	0.00
Cut Vol	7.31
Fill Vol	12.44
Cum Cut Vol	60.44
Cum Fill Vol	108.86
Net Vol	-48.42



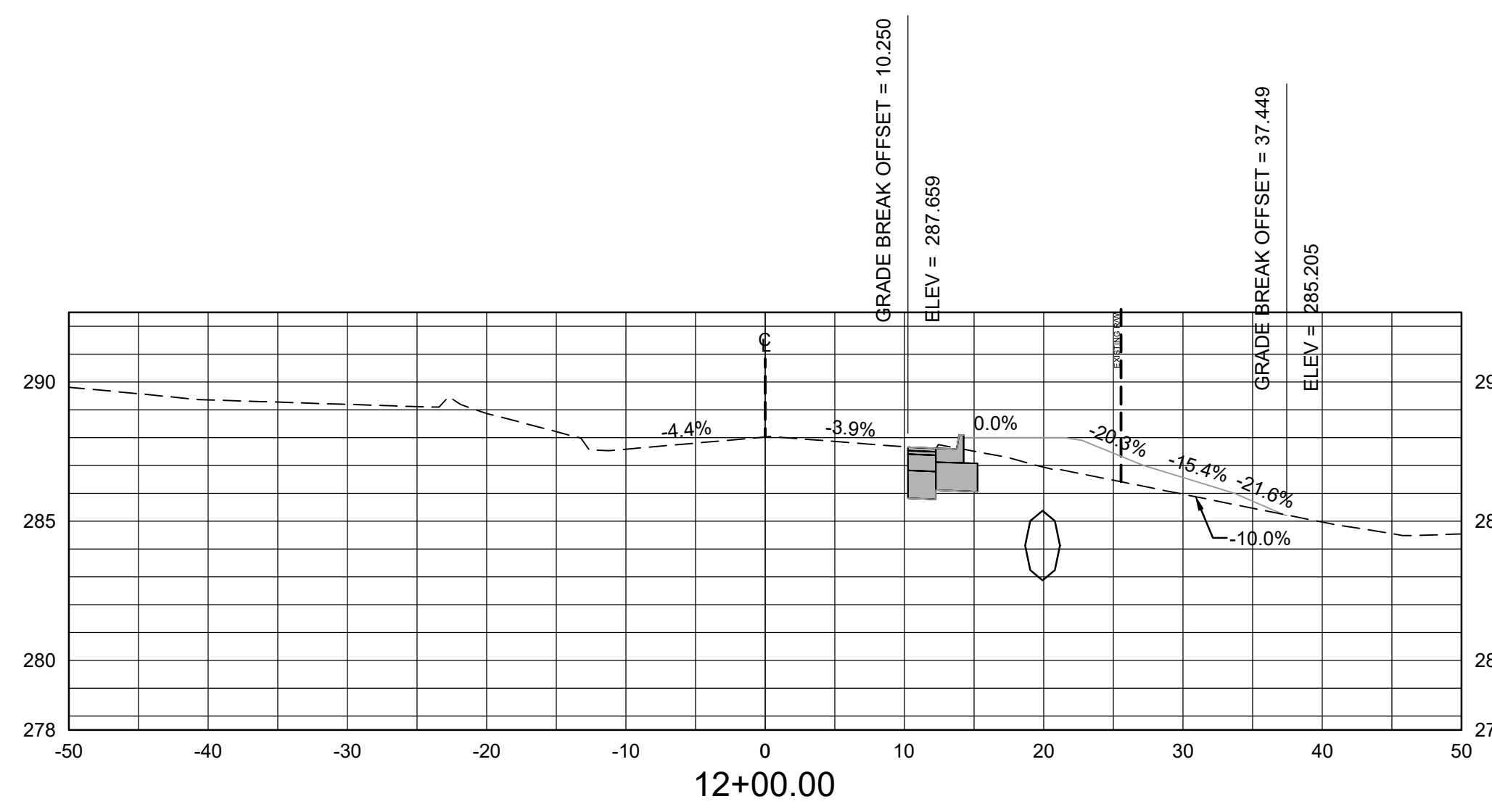
Total Volume at Station 11+00.00	
Cut Area	9.26
Fill Area	16.34
Cut Vol	8.57
Fill Vol	15.13
Cum Cut Vol	8.57
Cum Fill Vol	15.13
Net Vol	-6.56



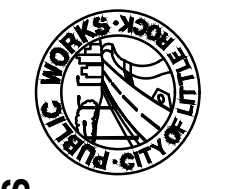
Total Volume at Station 12+50.00	
Cut Area	7.89
Fill Area	13.44
Cut Vol	14.92
Fill Vol	27.36
Cum Cut Vol	53.14
Cum Fill Vol	96.42
Net Vol	-43.29



Total Volume at Station 10+50.00	
Cut Area	0.00
Fill Area	0.00
Cut Vol	0.00
Fill Vol	0.00
Cum Cut Vol	0.00
Cum Fill Vol	0.00
Net Vol	0.00



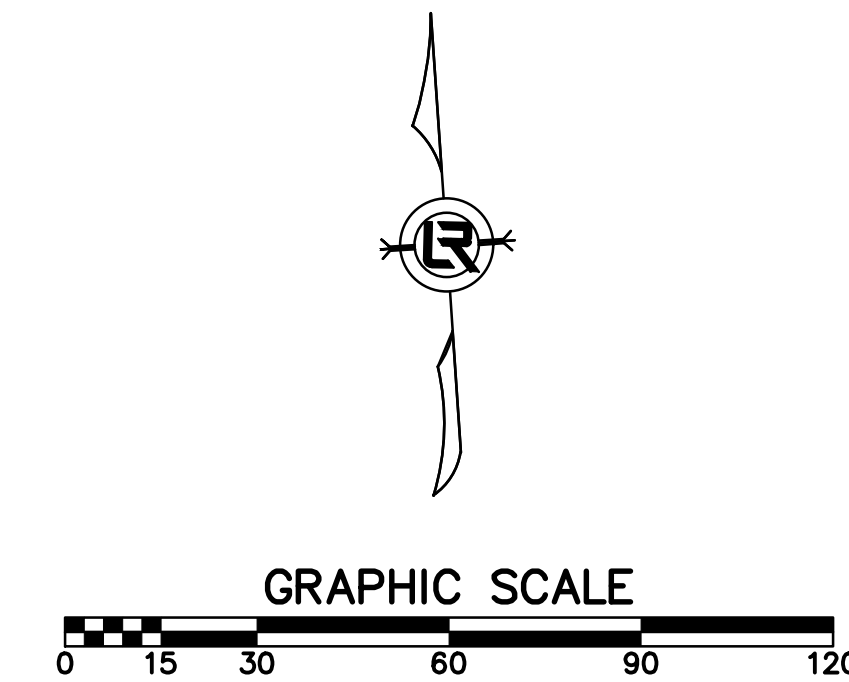
Total Volume at Station 12+00.00	
Cut Area	8.23
Fill Area	16.11
Cut Vol	14.34
Fill Vol	26.86
Cum Cut Vol	38.21
Cum Fill Vol	69.07
Net Vol	-30.86


 DEPARTMENT OF PUBLIC WORKS
 CIVIL ENGINEERING
 701 W. MARKHAM
 LITTLE ROCK, ARKANSAS 72201


 STATE OF ARKANSAS
 LICENSED PROFESSIONAL ENGINEER
 No. 21648
 6/25/2024


DRAWN BY
 BJ
DESIGNED
 BJ
CHECKED
 CV
DATE
 6/25/2024
SCALE
 1" = 10' H, 1" = 5V
PROJECT NO.
 02-22-DR-06
SHEET NO.
C7

SURVEY CONTROL POINTS LARCH ROAD							
POINT	DESCRIPTION	NORTHING	EASTING	ELEVATION	BASELINE REFERENCE	BASELINE STATION	BASELINE OFFSET
C/P #1	ALUMINUM MONUMENT 3' FROM BACK OF SOUTH CURB ON W. 57TH ST. AND 56' FROM BACK OF EAST CURB OF GEYER SPRINGS RD.	132893.5420	1209314.1830	281.38	W. 57TH ST.	N/A	25.47 RT
C/P #2	ALUMINUM MONUMENT ON THE NORTH SIDE OF W. 57TH ST.	132934.4470	1209546.5620	286.91	W. 57TH ST.	11+19.77	29.03 LT
C/P #3	ALUMINUM MONUMENT 8.5' FROM BACK OF SOUTH CURB ON W. 57TH ST. AND 111.5' FROM BACK OF EAST CURB OF GEYER SPRINGS RD.	133566.8902	1213365.8978	269.61	W. 57TH ST.	N/A	31.29 RT
C/P #4	ALUMINUM MONUMENT ON THE NORTH SIDE OF W. 57TH ST.	132913.6850	1209723.1460	290.95	W. 57TH ST.	12+97.29	19.27 LT
C/P #6	ALUMINUM MONUMENT WEST SIDE OF HOPSON DR.	132860.8010	1209737.8490	289.01	W. 57TH ST.	13+15.28	32.54 RT
C/P #7	ALUMINUM MONUMENT NORTH SIDE OF GREATER 2ND BAPTIST'S CONCRETE SIDEWALK	132983.6660	1209535.5230	288.79	W. 57TH ST.	11+05.71	77.49 LT
C/P #8	ALUMINUM MONUMENT ON THE NORTH SIDE OF W. 57TH ST.	132916.7660	1209678.9480	290.03	W. 57TH ST.	12+53.01	19.63 LT



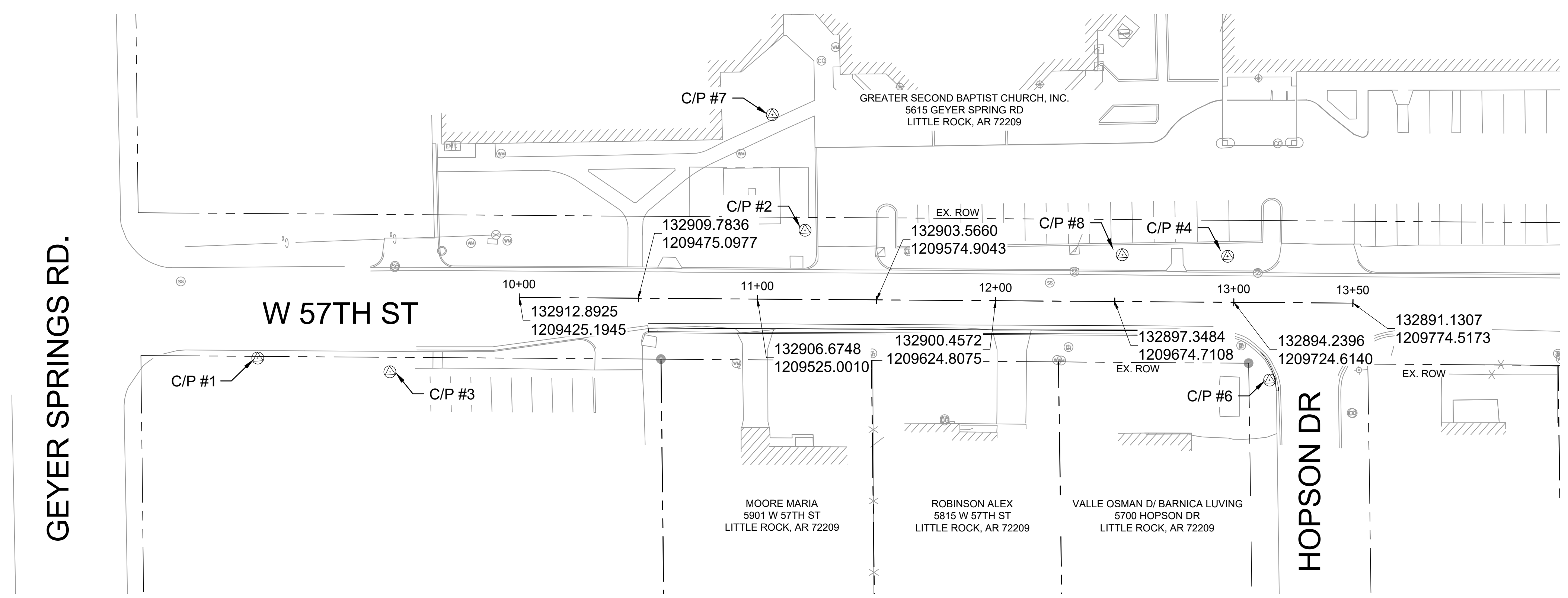
REVISIONS	DATE

CITY OF LITTLE ROCK, ARKANSAS
#57TH STREET DRAINAGE
PROJECT LAYOUT

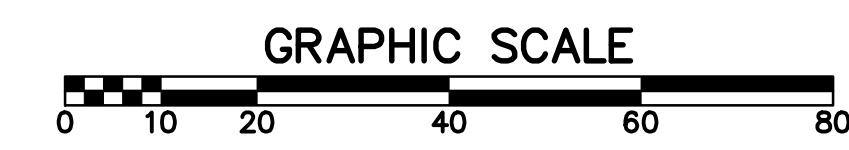
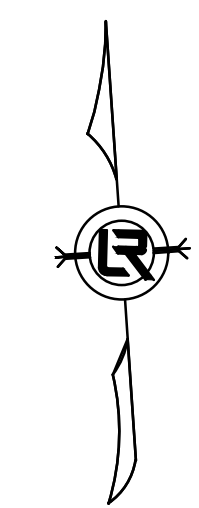

 DEPARTMENT OF PUBLIC WORKS
 CIVIL ENGINEERING
 701 W. MARKHAM
 LITTLE ROCK, ARKANSAS 72201


 STATE OF ARKANSAS
 LICENSED PROFESSIONAL ENGINEER
 No. 21648
 6/25/2024

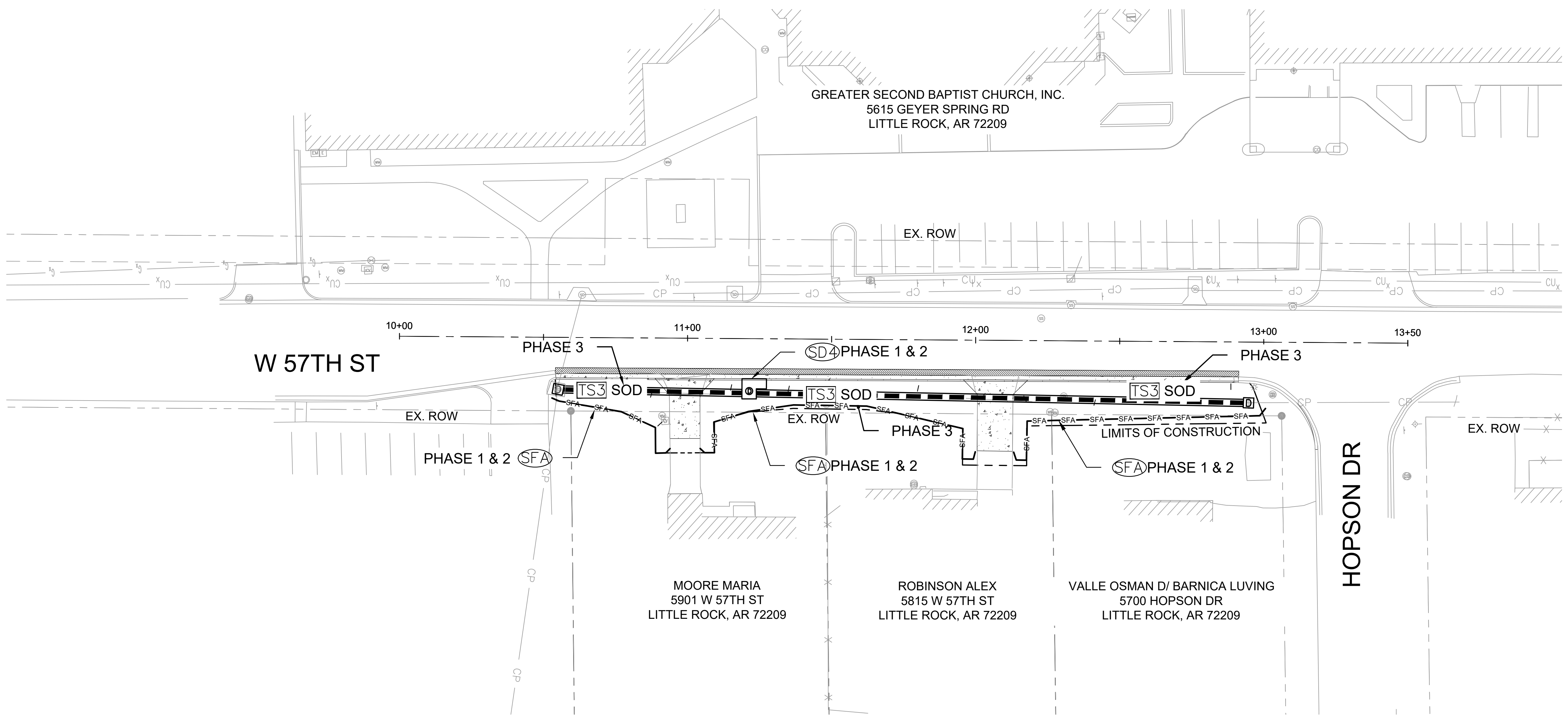
DRAWN BY
 B.J.
 DESIGNED
 B.J.
 CHECKED
 C.V.
 DATE
 6/25/2024
 SCALE
 1" = 30'
 PROJECT NO.
 02-22-DR-06
 SHEET NO.
C8



REVISIONS	DATE



PHASING LEGEND
 PHASE 1 (INITIAL STRIP AND DEMOLITION)
 PHASE 2 (NEW DRAINAGE, CURB, ASPHALT, AND DRIVEWAY APRON CONSTRUCTED)
 PHASE 3 (RESTORE DISTURBED AREAS WITH SOD)



CITY OF LITTLE ROCK, ARKANSAS
 #57TH STREET DRAINAGE
 EROSION CONTROL

DEPARTMENT OF PUBLIC WORKS
 CIVIL ENGINEERING
 701 W. MARKHAM
 LITTLE ROCK, ARKANSAS 72201

STATE OF ARKANSAS
 LICENSED PROFESSIONAL ENGINEER
 No. 21648
 CHRISTOPHER J. VAHRENWALD
 6/25/2024

DRAWN BY
 B.J.
 DESIGNED
 B.J.
 CHECKED
 C.V.
 DATE
 6/25/2024
 SCALE
 1" = 20'
 PROJECT NO.
 02-22-DR-06
 SHEET NO.
 C9