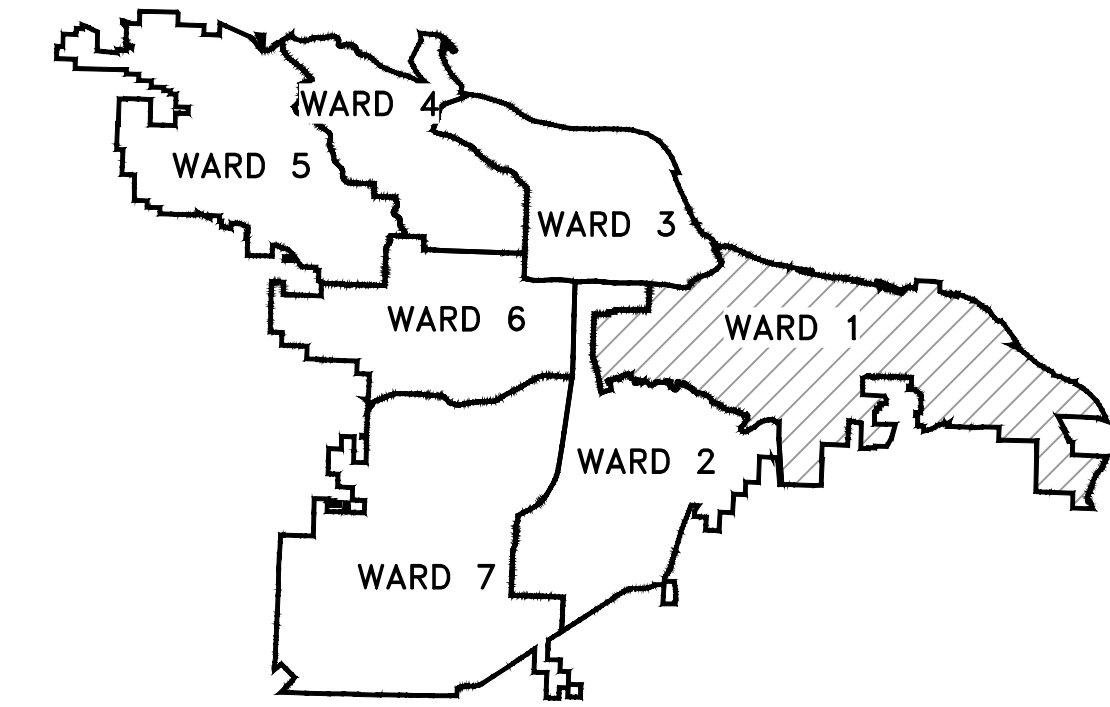


CLR PROJECT 01-19-ST-023

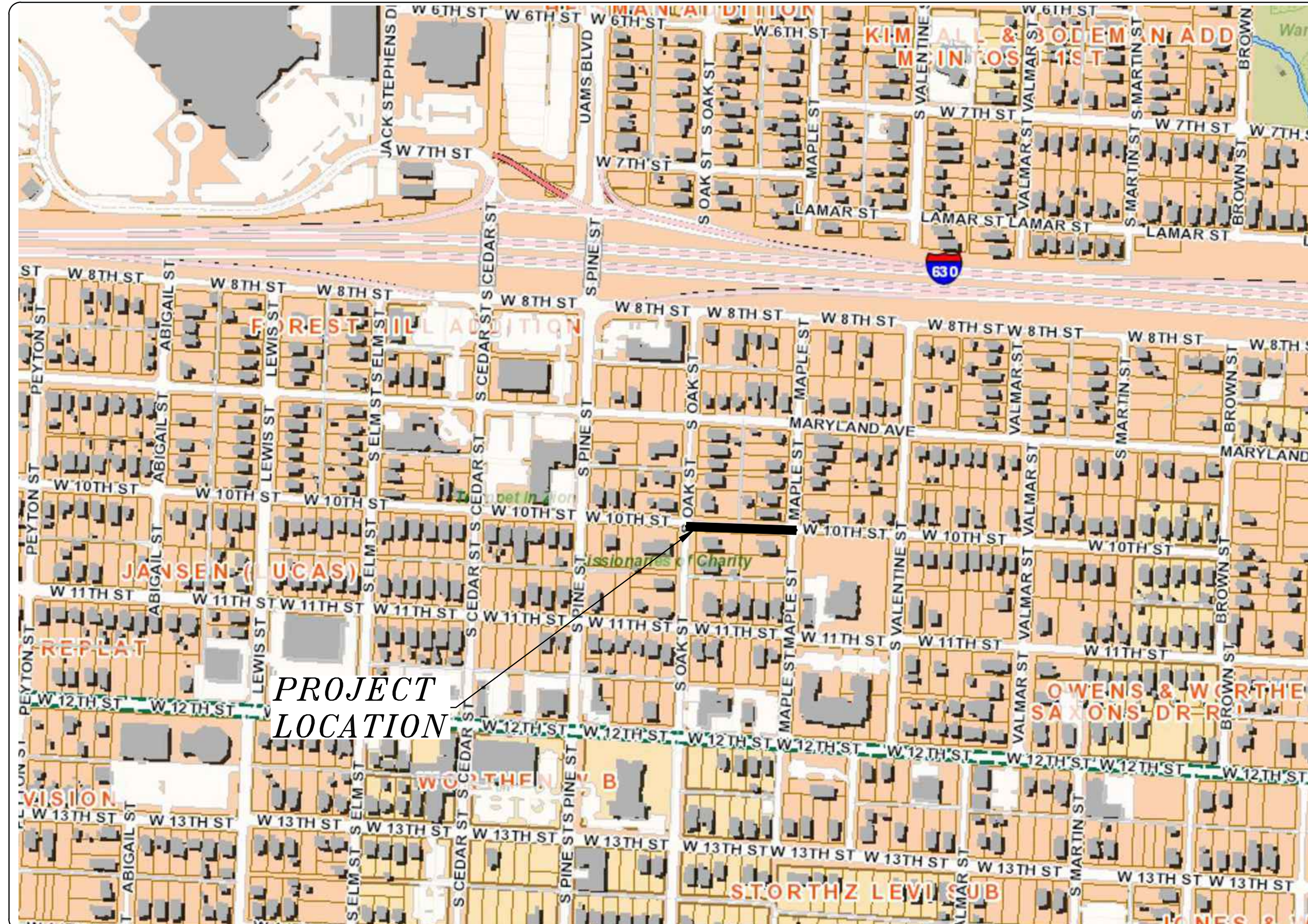
WEST 10TH STREET RECONSTRUCTION

FROM OAK TO MAPLE

LITTLE ROCK, ARKANSAS



PROJECT LOCATION - WARD 1



2023-2025
BOND PROGRAM

DEPARTMENT OF PUBLIC WORKS
CIVIL ENGINEERING
701 WEST MARKHAM STREET
LITTLE ROCK, ARKANSAS 72201

SHEET NO.	TITLE
C1	COVER SHEET
C2	LEGEND
C3	TYPICAL SECTIONS & DETAILS
C4	EXISTING CONDITIONS
C5	PLAN & PROFILE
C6	CROSS-SECTIONS
C7	EROSION CONTROL PLAN



Know what's below.
Call before you dig.



13000 CANTRELL ROAD
LITTLE ROCK, AR 72223
PHONE 501-975-8100
WWW.ECCI.COM

FINAL- 100% SUBMITTAL

REVISIONS	DATE

CITY OF LITTLE ROCK, ARKANSAS
WEST 10TH STREET RECONSTRUCTION
COVER SHEET

DEPARTMENT OF PUBLIC WORKS
CIVIL ENGINEERING
701 W. MARKHAM
LITTLE ROCK, ARKANSAS 72201



DRAWN BY JJ
DESIGNED KP
CHECKED RB
DATE 06.18.24
SCALE NTS
PROJECT NO. 01-19-ST-023
SHEET NO. C1

SUMMARY OF QUANTITIES

ITEM #	ITEM DESCRIPTION	UNIT	QUANTITY
2.01	SITE PREPARATION	L.S.	1
4.01	AGGREGATE BASE COURSE	TON	327
6.01	ACHM SURFACE COURSE	TON	133
7.04	CONCRETE DRIVEWAY (4" THICK) STANDARD FINISH	SF	1,180
8.01	CONCRETE CURB AND GUTTER (CLASS 3)	L.F.	585
9.04	CONCRETE SIDEWALK (6" THICK)	SF	1,560
10.01	JUNCTION BOX (4')	EA.	1
10.04	CURB INLET - 4' BOX	EA.	6
10.07	WING 3' EXTENSION	EA.	7
10.81	REBUILD JUNCTION BOX TOP	EA.	1
13.18S	STORM DRAIN PIPE, 18" (SIDE)	L.F.	330
13.18C	STORM DRAIN PIPE, 18" (CROSS)	L.F.	60
13.24S	STORM DRAIN PIPE, 24" (SIDE)	L.F.	40
13.61	TIE INTO EXISTING JUNCTION BOX	EA.	1
13.63	CONCRETE PLUG ON EXISTING STORM DRAIN	E.A.	4
13.64	TIE INTO EXISTING BOX CULVERT	EA.	1
14.01	SOLID SODDING, BERMUDA	SY	141
16.01	MAINTENANCE OF TRAFFIC	L.S.	1
18.50	HANDICAP RAMP- TYPE 3	S.F.	680
18.55	WATER FOR DUST CONTROL	GAL	200
19.01	FINAL CLEANUP	L.S.	1
24.06	SEDIMENT BARRIER, SILT FENCE (SD1)	EA.	7
24.09	SEDIMENT BARRIER, BLOCK (SD4)	EA.	8
24.11	SILT FENCE - TYPE A (SFA)	L.F.	934
24.16	DISTURBED AREA STABILIZATION - TEMPORARY STABILIZATION (TS1)	AC.	1
26.10	TRENCH AND EXCAVATION SAFETY	L.S.	1
30.02	RELOCATE EXISTING SIGN	EA.	6
SP	AS-BUILT SURVEY	L.S.	1

NOTES

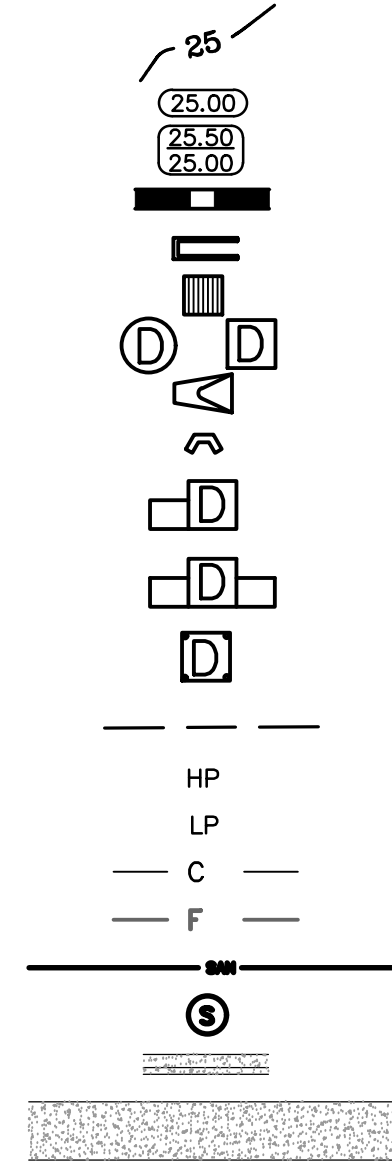
- ITEMS LISTED ARE COMPLETE IN PLACE.
- ALL REMOVAL AND DISPOSAL ITEMS ARE INCLUDED WITH SITE PREP.

EXISTING

- IRON ROD ○ IR
- PK NAIL ○ PK
- R.R. SPIKE ○ RR(Sp)
- CONC. MONUMENT □ CM
- WATER VALVE X WV
- WATER METER □ WM
- FIRE HYDRANT ∇ FH
- GAS METER □ GM
- GAS VALVE ⊗ GV
- CLEAN-OUT ○ CO
- GUARD POST (BOLLARD) ● GP
- SIGN POST —
- BENCHMARK ⊕
- STORM SEWER MANHOLE (D)
- SANITARY SEWER MANHOLE (S)
- TELEPHONE MANHOLE (T)
- ELECTRIC MANHOLE (E)
- TELEPHONE BOX □
- ELECTRIC BOX □
- CABLE BOX □
- UTILITY POLE ⊕
- GUY WIRE —
- LIGHT POLE ⊕
- POST OR POLE (TYPE AS NOTED) ⊕
- MAILBOX ⊕
- DECIDUOUS TREE ⊗
- EVERGREEN/CONIFEROUS TREE ⊗
- BUSH ⊗
- PROPERTY LINE — — — — —
- SETBACK LINE — — — — —
- EASEMENT LINE — — — — —
- CURB — — — — —
- FENCE — X — X —
- OVERHEAD UTILITY — OHE — — — — —
- UNDERGROUND TELEPHONE — UGT — UGT — UGT —
- UNDERGROUND ELECTRIC — UGE — UGE — UGE —
- WATER LINE — 8"W — 8"W — 8"W —
- SEWER LINE — 8" — 8" — 8" —
- GAS LINE — GAS — GAS — GAS —
- STORM SEWER/CULVERT — 24" CMP/RCP/DIP —
- CONTOUR LINE — 650 — — — — —

PROPOSED

- CONTOUR 25
- SPOT ELEVATION (25.00)
- SPOT CURB ELEVATION (25.50)
- STORM SEWER — PIPE
- STORM SEWER — MITERED END SECTION
- STORM SEWER — GRATE INLET
- STORM SEWER — JUNCTION BOX
- STORM SEWER — FLARED END SECTION
- STORM SEWER — HEADWALL
- STORM SEWER — INLET WITH SINGLE EXTENSION
- STORM SEWER — INLET WITH DOUBLE EXTENSION
- STORM SEWER — AREA INLET
- GRADE BREAK LINE
- HIGH POINT HP
- LOW POINT LP
- CUT LINE C
- FILL LINE F
- SANITARY SEWER PIPE
- SANITARY SEWER MANHOLE
- CURB
- CONCRETE
- CONSTRUCTION — ENTRANCE/EXIT
- CHECK DAM
- DIVERSION BERM
- DOWNDRAIN STRUCTURE — TEMPORARY
- ROCK DAM
- SEDIMENT BARRIER — SILT FENCE
- SEDIMENT BARRIER — GRAVEL RING
- SEDIMENT BARRIER — BLOCK & GRAVEL
- SEDIMENT BARRIER — BLOCK
- TEMPORARY SEDIMENT BASIN
- SILT FENCE — TYPE A
- SILT FENCE — TYPE B
- SILT FENCE — TYPE C
- STORM DRAIN OUTLET PROTECTION
- SURFACE ROUGHENING
- DISTURBED AREA STABILIZATION —TEMPORARY STABILIZATION (TS1)
- DISTURBED AREA STABILIZATION —TEMPORARY GRASSING (TS2)
- DISTURBED AREA STABILIZATION —PERMANENT GRASSING (TS3)
- MATting/BLANKETS Mb



REVISIONS	DATE

CITY OF LITTLE ROCK, ARKANSAS
WEST 10TH STREET RECONSTRUCTION
LEGEND

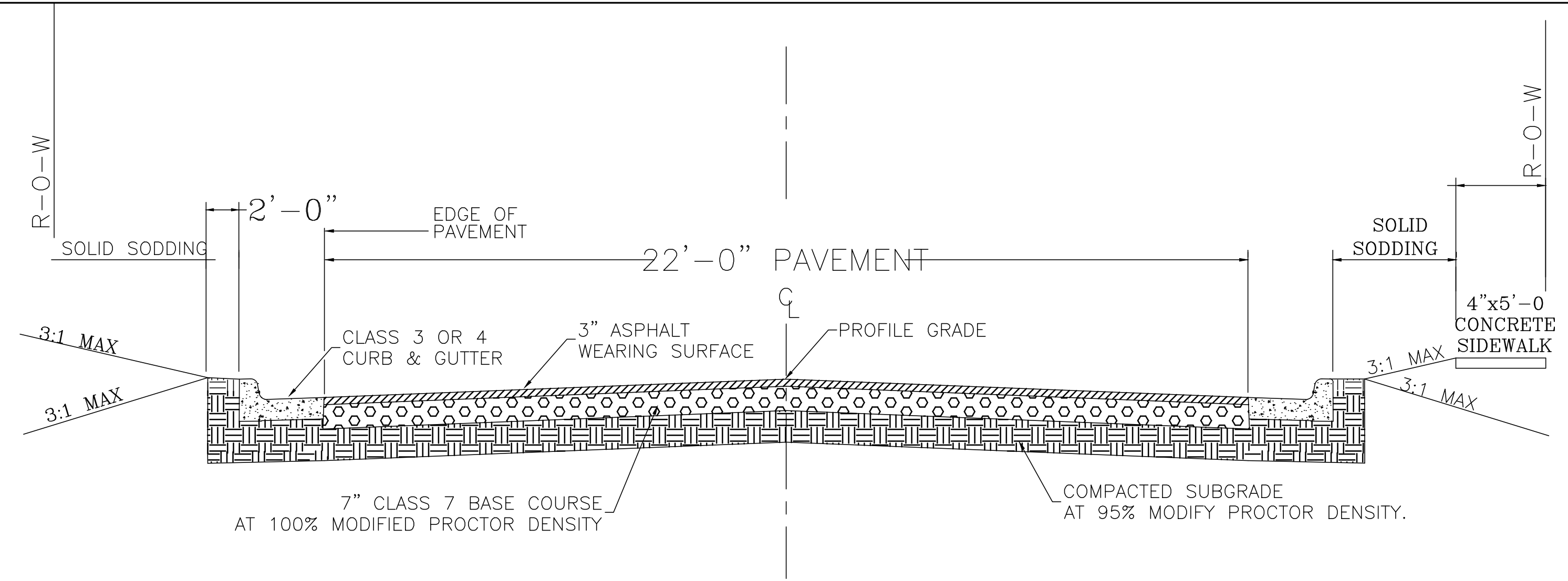
DEPARTMENT OF PUBLIC WORKS
CIVIL ENGINEERING
701 W. MARKHAM
LITTLE ROCK, ARKANSAS 72201



DRAWN BY	JJ
DESIGNED	RB
CHECKED	KP
DATE	06.18.24
SCALE	NTS
PROJECT NO.	01-19-ST-023
SHEET NO.	C2

FINAL- 100% SUBMITTAL

REVISIONS	DATE



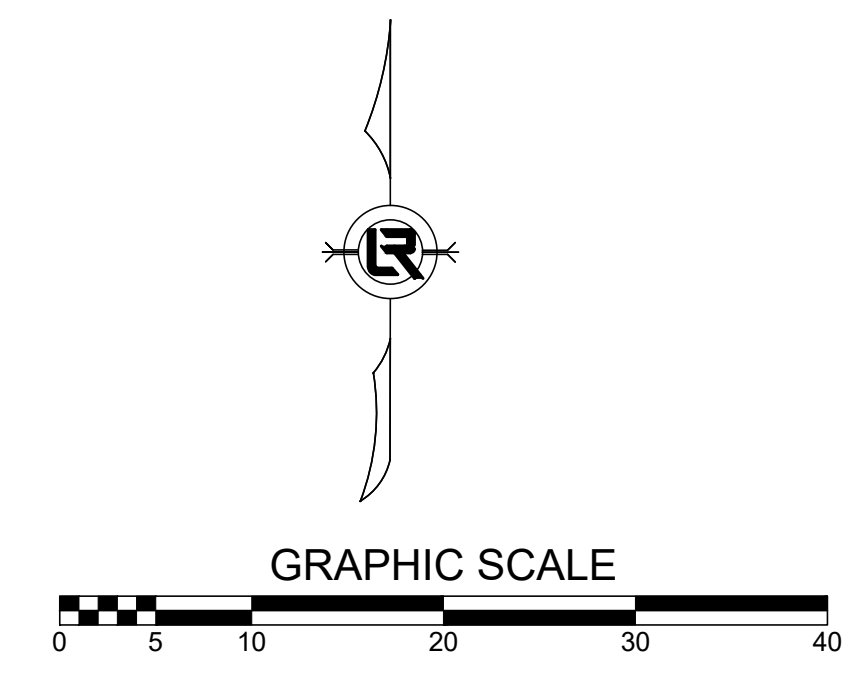
GENERAL NOTES

1. IN AREAS TO RECEIVE BITUMINOUS PAVING, CONCRETE DRIVEWAYS, OR CURB AND GUTTER, SUBGRADE SHALL BE COMPACTED TO A DENSITY NOT LESS THAN 95% OF MAXIMUM DENSITY OBTAINED AT OPTIMUM MOISTURE CONTENT. (AASHTO T-180)
2. FOR AREAS OF SUBGRADE PREPARATION TO RECEIVE CONCRETE SIDEWALKS, SUBGRADE SHALL BE COMPACTED TO A DENSITY OF 90% MAXIMUM.(AASHTO T-180).
3. CRUSHED STONE- MATERIAL IN EACH COURSE SHALL BE COMPACTED TO A DENSITY OF 100% MAXIMUM (AASHTO T-191).
4. CENTERLINE PROFILE WILL REQUIRE HEIGHT GREATER THAN CURB FOR SOME STREETS TO MAINTAIN 2% MINIMUM CROSS-SLOPE.

THICKNESS SHALL BE DETERMINED BY SOIL TEST AND PAVEMENT DESIGN IF REQUIRED BY DEPARTMENT OF PUBLIC WORKS.
20'-0" PAVEMENT FOR MINOR RESIDENTIAL WHERE APPROVED BY CITY.

*NOTE: PAVEMENT RECONSTRUCTION TO CENTERLINE IS REQUIRED WHEN EXISTING STREET DOES NOT MEET THESE STANDARDS.

PW-22



CITY OF LITTLE ROCK, ARKANSAS
WEST 10TH STREET RECONSTRUCTION
TYPICAL SECTIONS

DEPARTMENT OF PUBLIC WORKS
CIVIL ENGINEERING
701 W. MARKHAM
LITTLE ROCK, ARKANSAS 72201

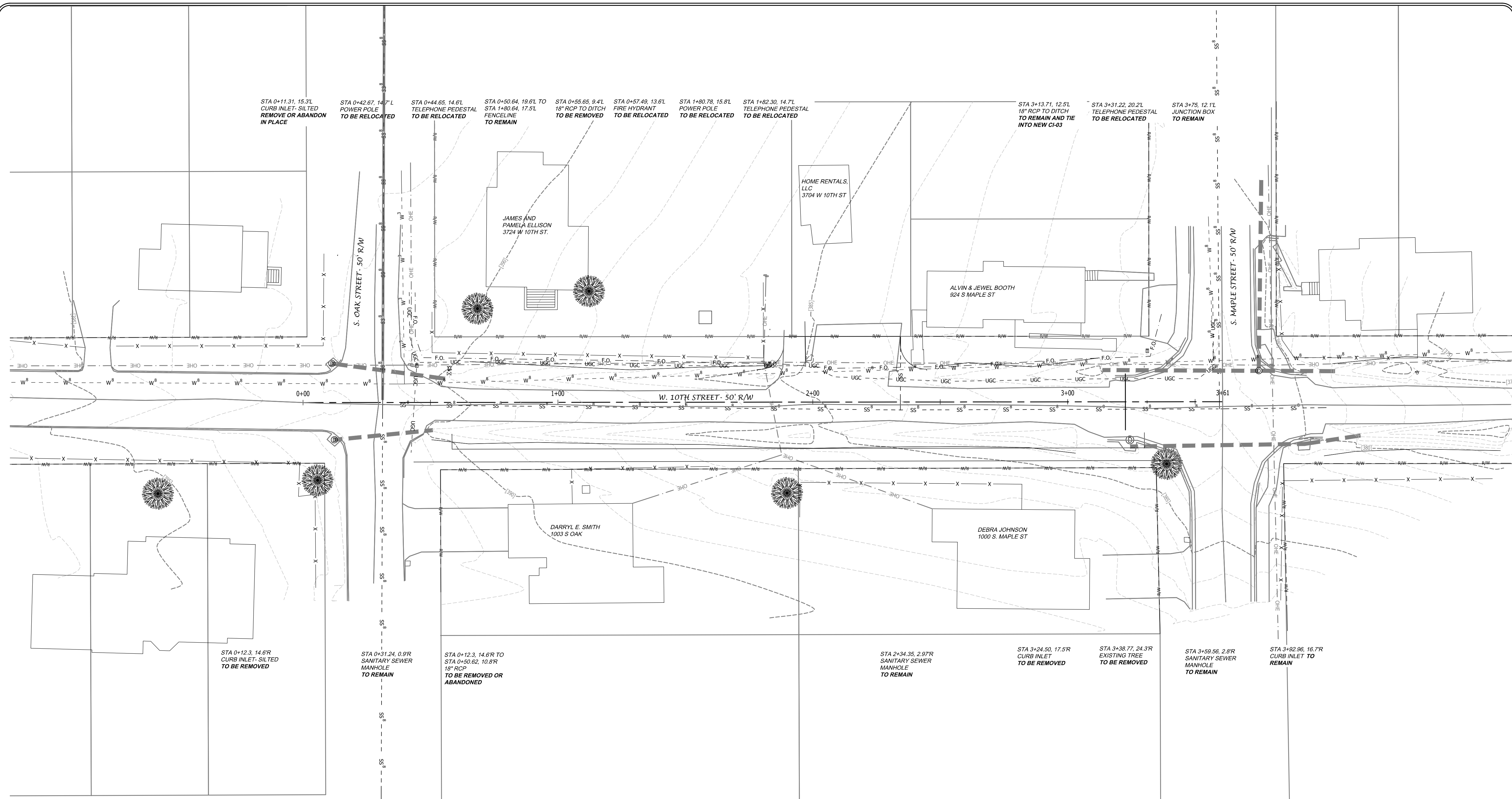


DRAWN BY	JJ
DESIGNED	KP
CHECKED	RB
DATE	06.18.24
SCALE	NTS
PROJECT NO.	CLR #01-19-ST-23
SHEET NO.	C3

FINAL- 100% SUBMITTAL

CITY OF LITTLE ROCK, ARKANSAS
WEST 10TH STREET RECONSTRUCTION

EXISTING CONDITIONS



STA 0+12.3, 14.6'R CURB INLET - SILTED TO BE REMOVED

STA 0+31.24, 0.9'R SANITARY SEWER MANHOLE TO REMAIN

STA 0+12.3, 14.6'R TO STA 0+50.62, 10.8'R 18\"/>

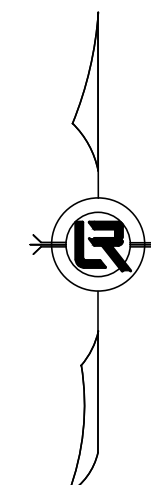
STA 2+34.35, 2.97'R SANITARY SEWER MANHOLE TO REMAIN

STA 3+24.50, 17.5'R CURB INLET TO BE REMOVED

STA 3+38.77, 24.3'R EXISTING TREE TO BE REMOVED

STA 3+59.56, 2.8'R SANITARY SEWER MANHOLE TO REMAIN

STA 3+92.86, 16.7'R CURB INLET TO REMAIN

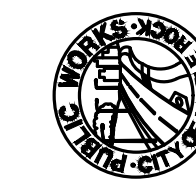


GRAPHIC SCALE



FINAL- 100% SUBMITTAL

DEPARTMENT OF PUBLIC WORKS
CIVIL ENGINEERING
701 W. MARKHAM
LITTLE ROCK, ARKANSAS 72201



DRAWN BY

JJ

DESIGNED

KP

CHECKED

RB

DATE

05.15.24

SCALE

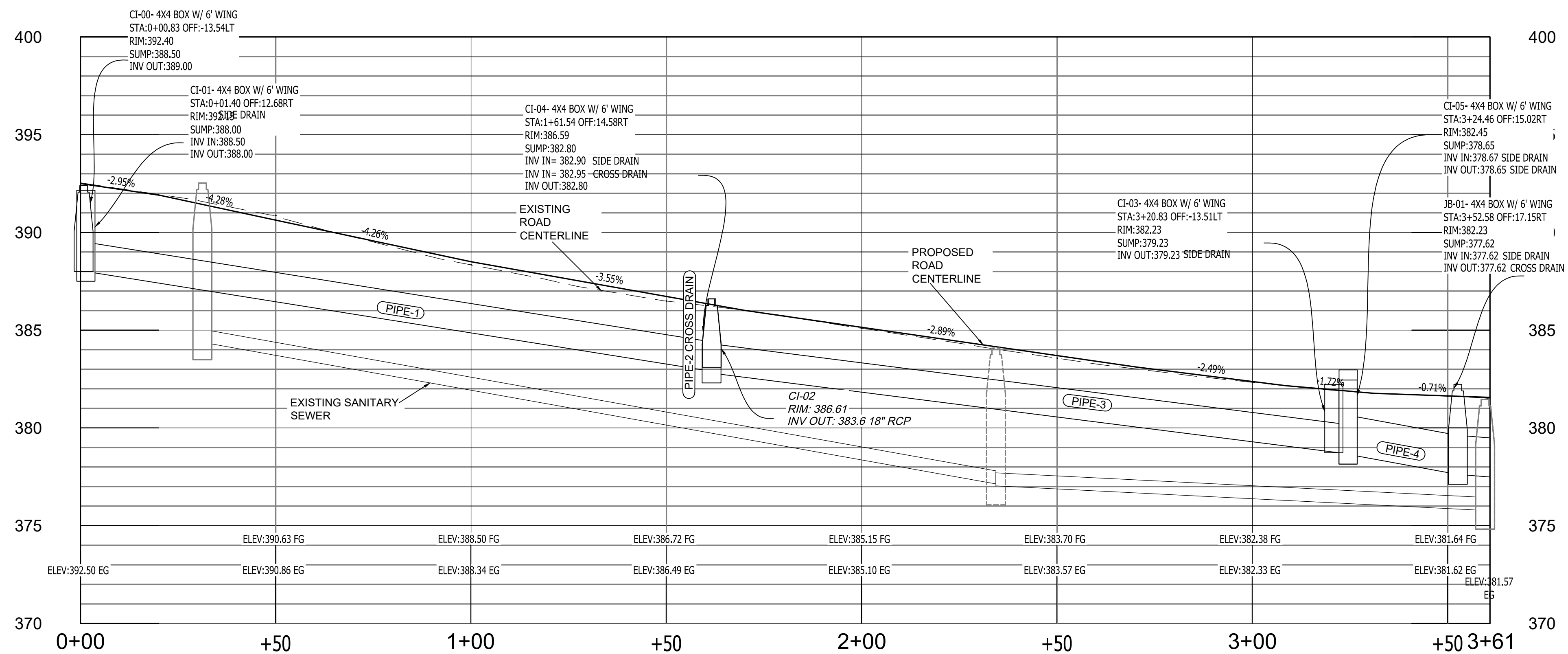
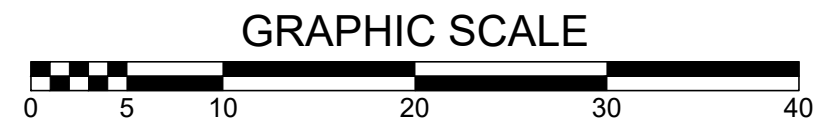
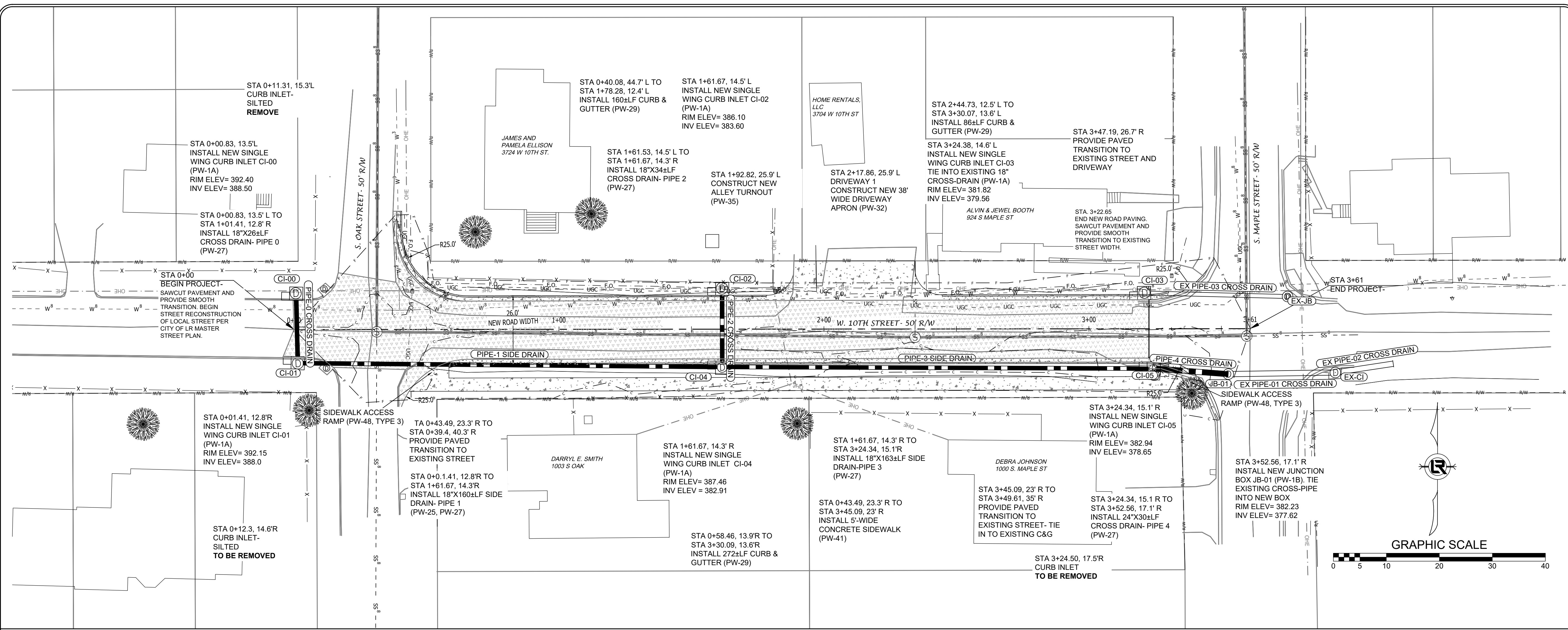
1"=20'

PROJECT NO.

CLR #01-19-ST-23

SHEET NO.

C4



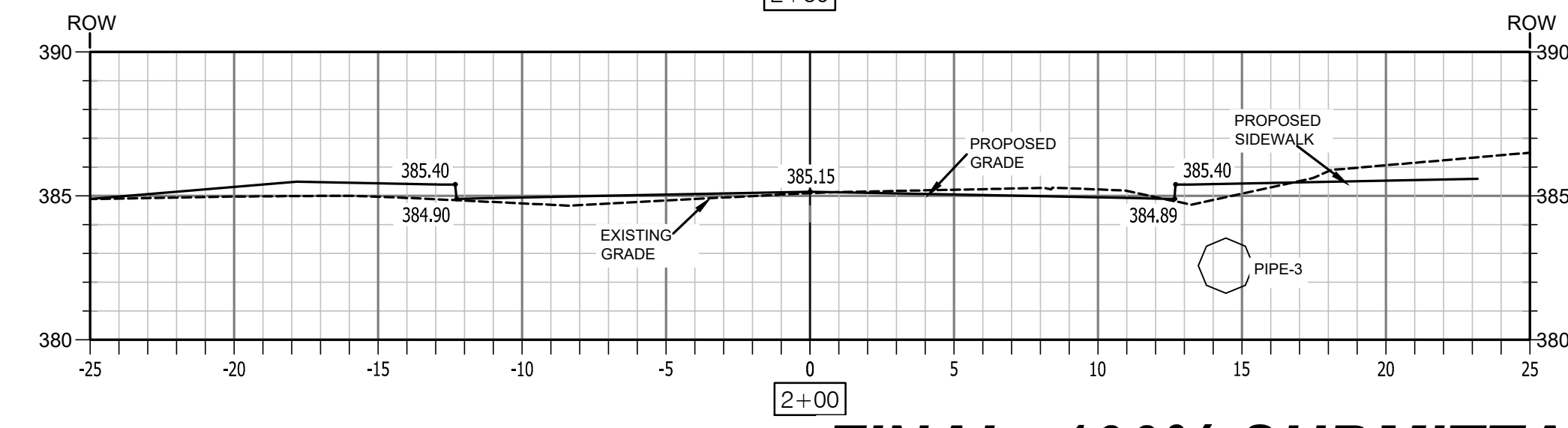
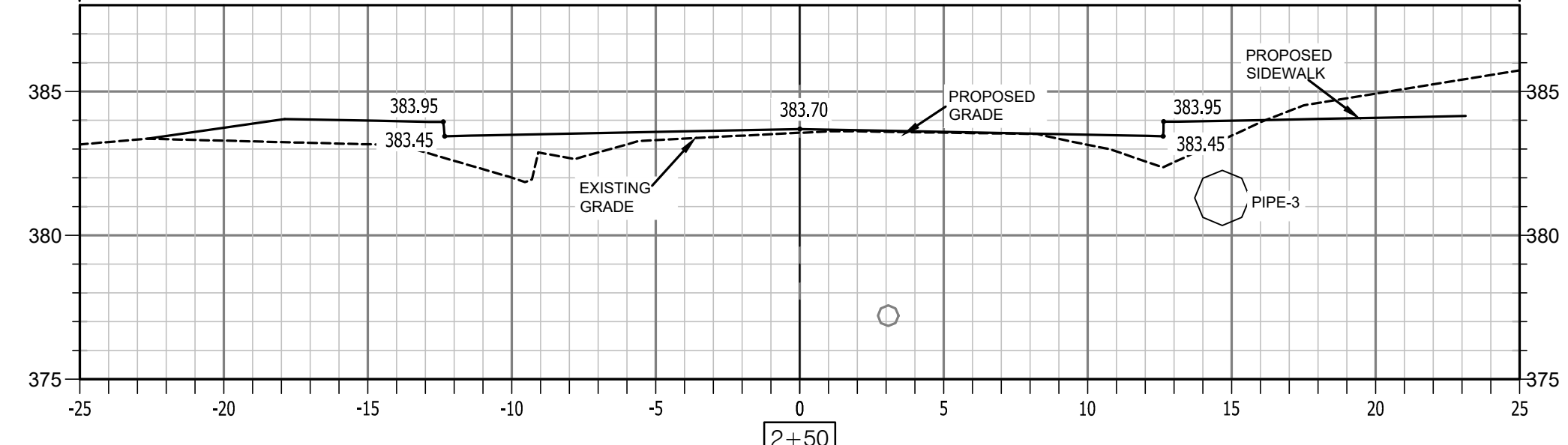
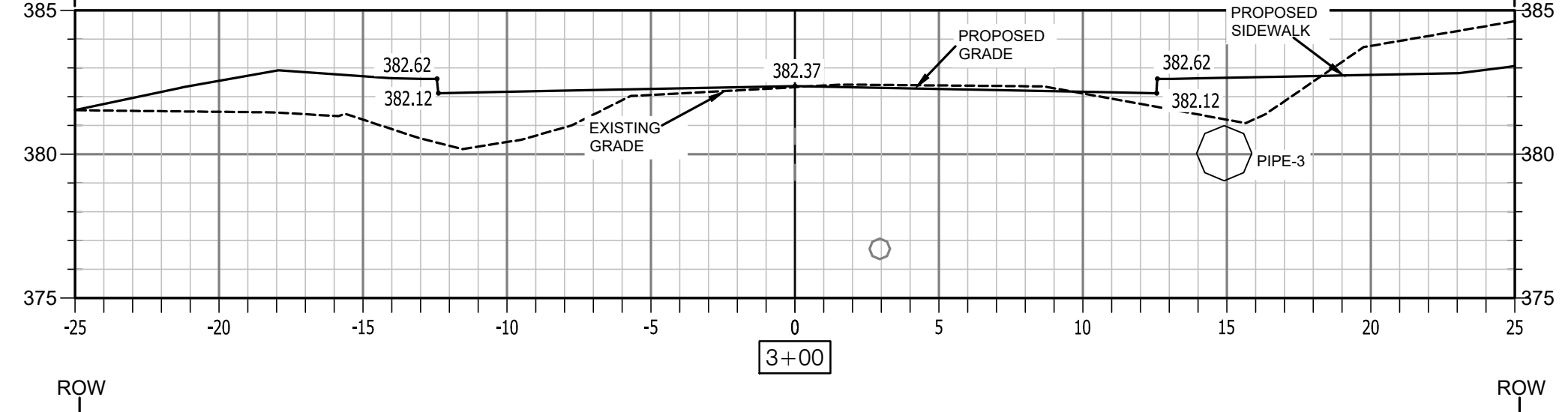
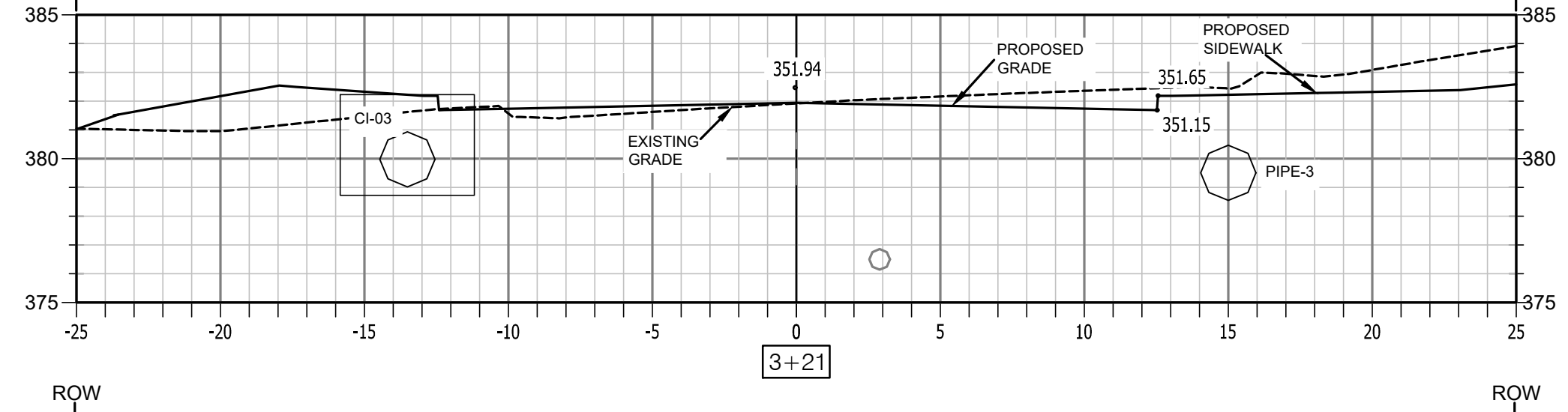
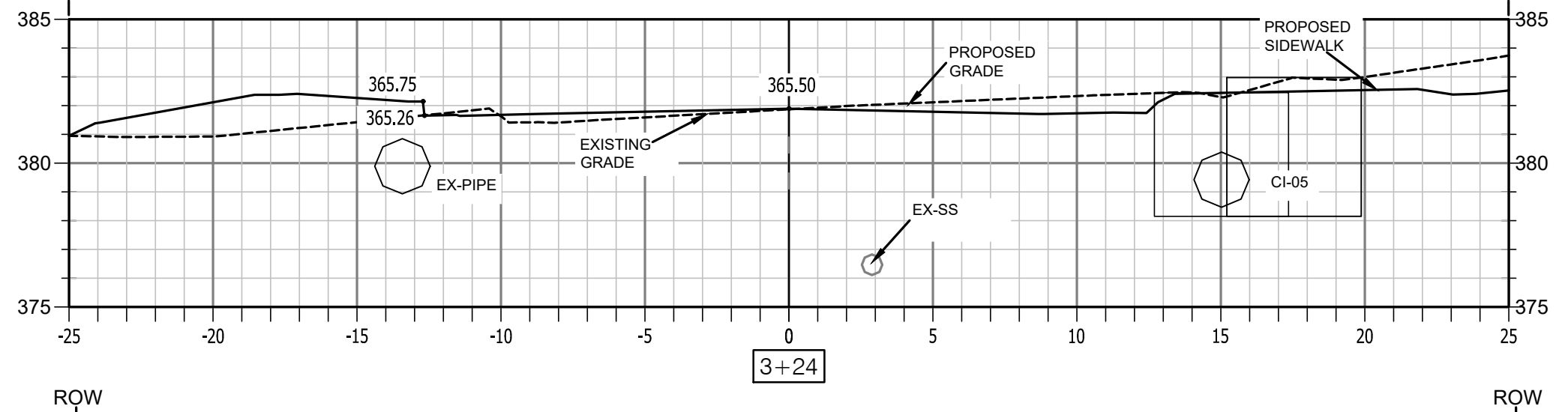
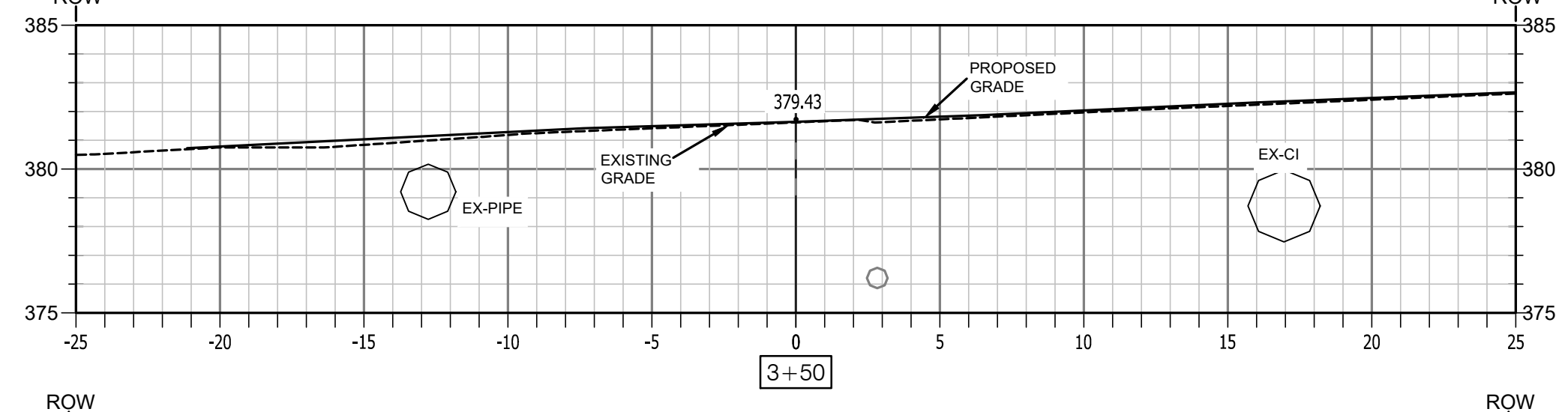
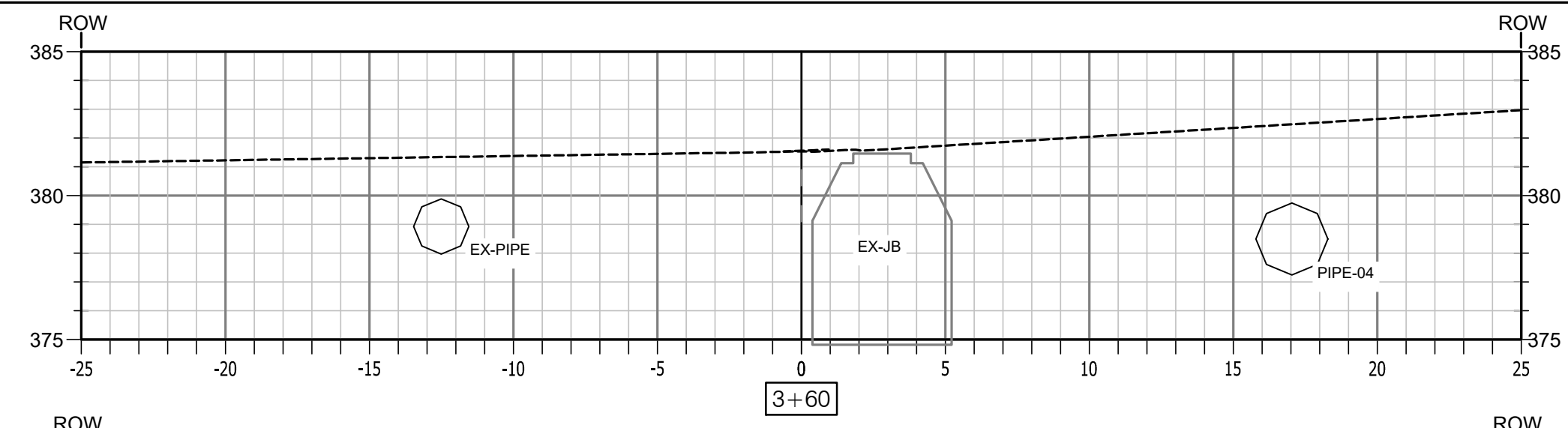
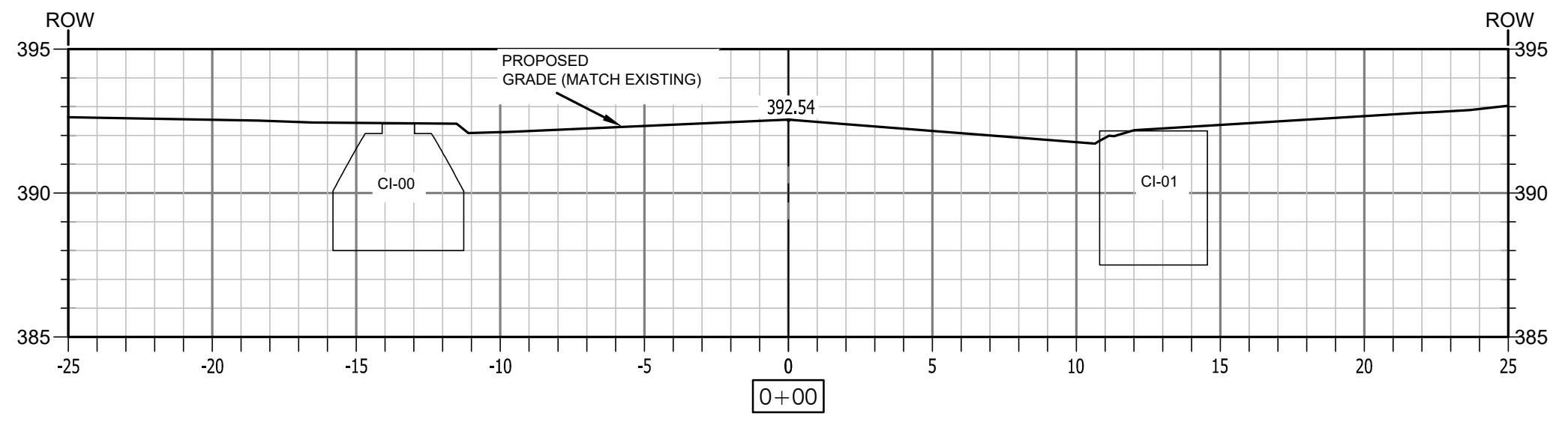
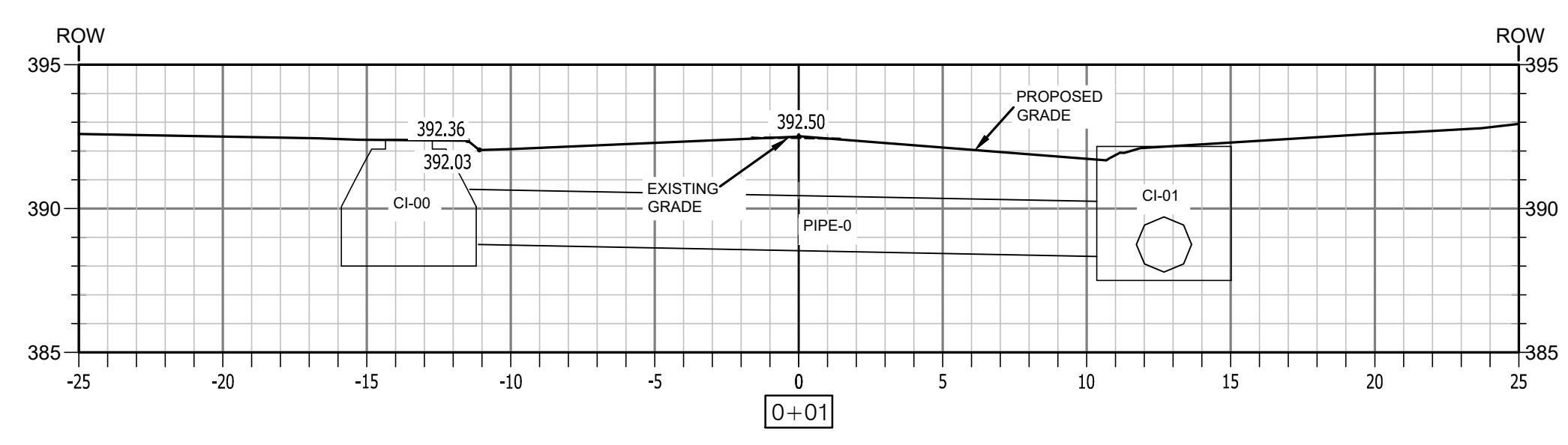
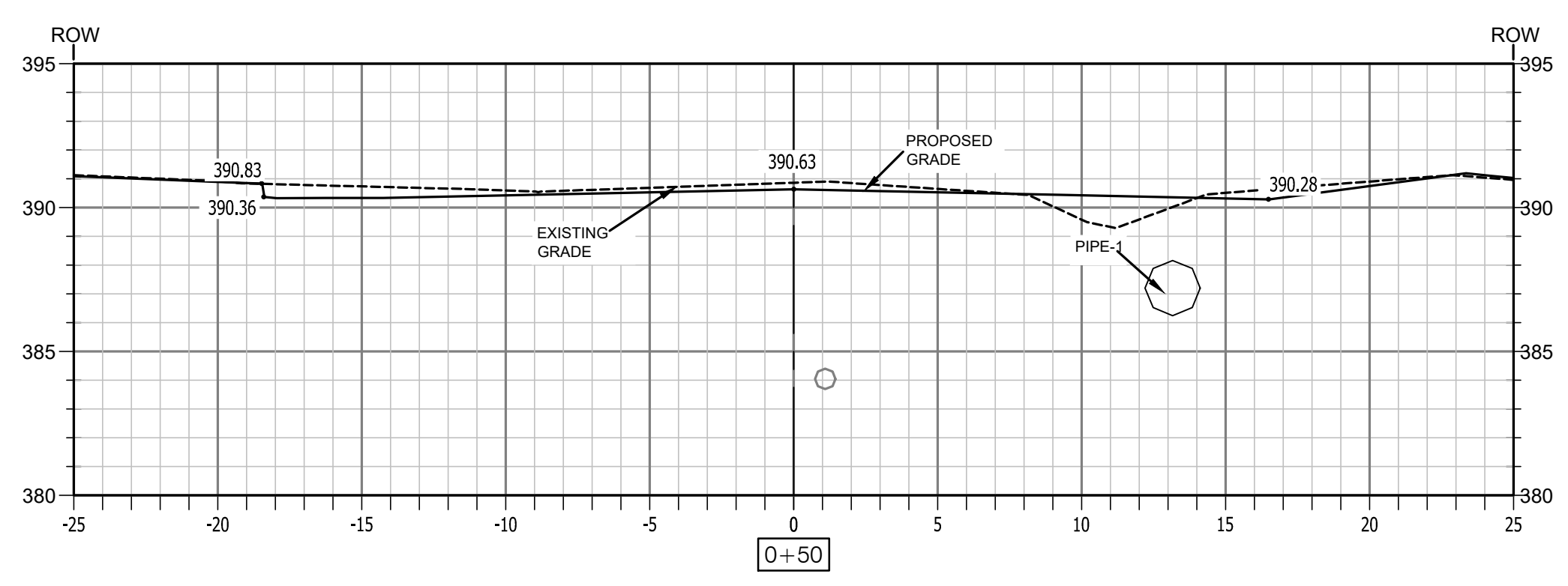
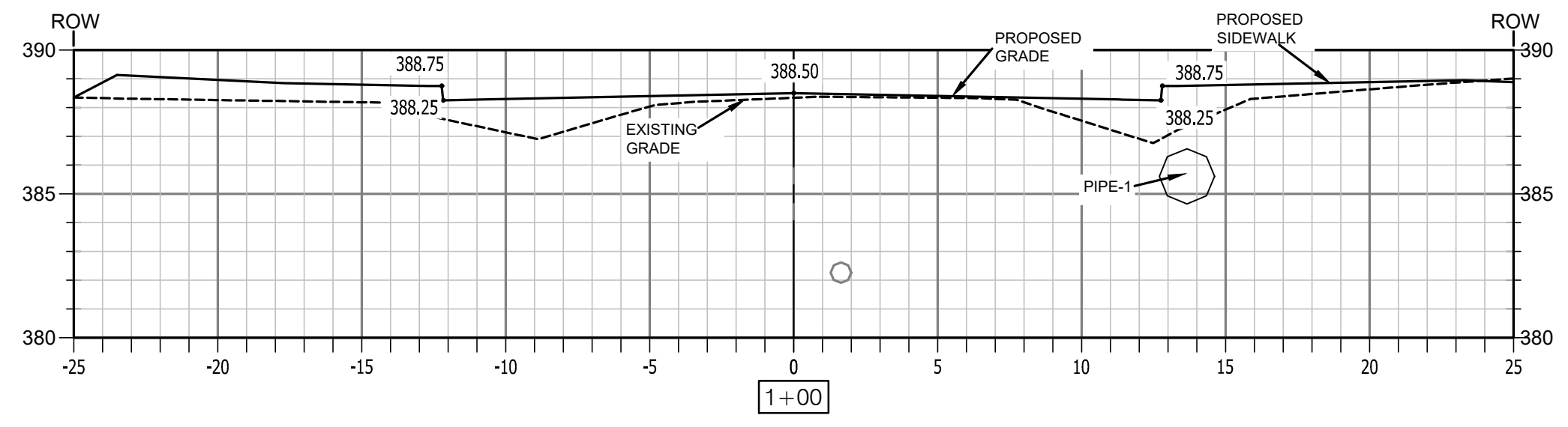
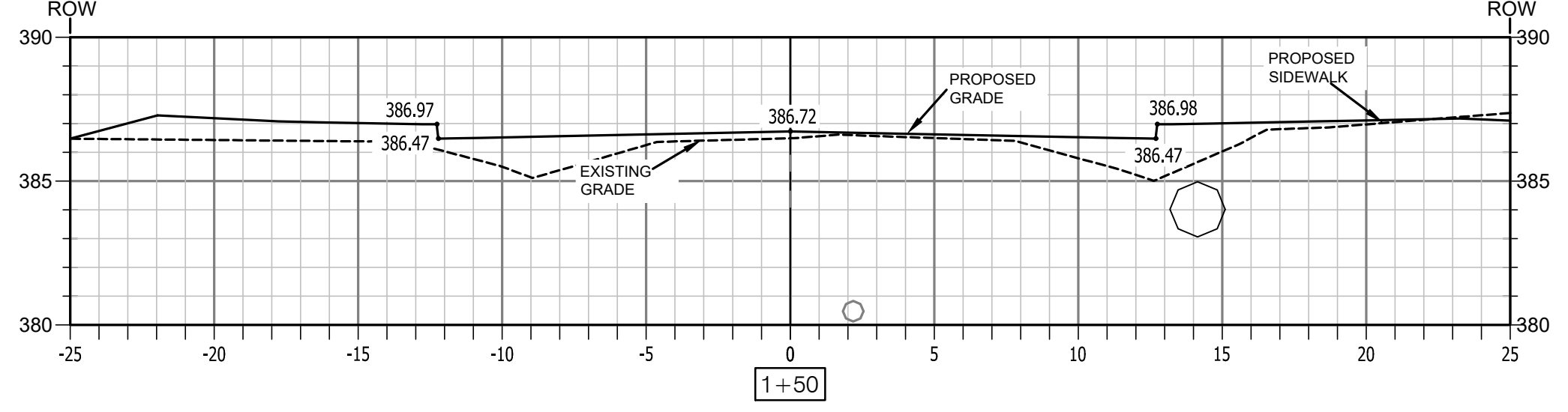
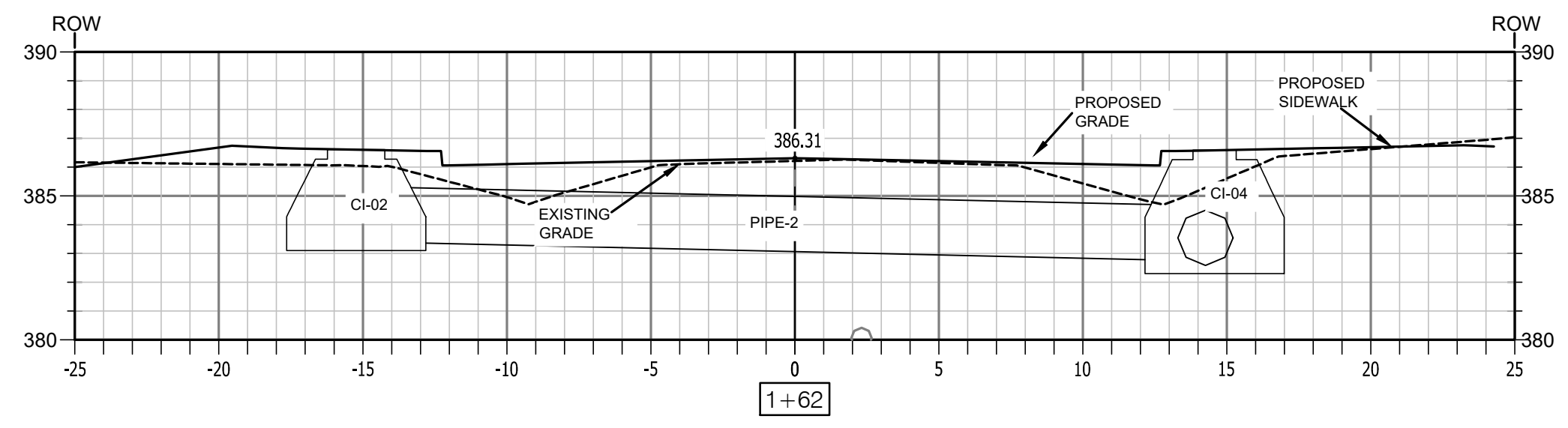
FINAL- 100% SUBMITTAL

REVISIONS	DATE

CITY OF LITTLE ROCK, ARKANSAS
WEST 10TH STREET RECONSTRUCTION
PLAN & PROFILE

DEPARTMENT OF PUBLIC WORKS
CIVIL ENGINEERING
701 W. MARKHAM
LITTLE ROCK, ARKANSAS 72201


DRAWN BY
JJ
DESIGNED
KP
CHECKED
RB
DATE
06.18.24
SCALE
1"=20' H, 1"=5' V
PROJECT NO.
CLR #01-19-ST-23
SHEET NO.
C5



FINAL-100% SUBMITTAL

REVISIONS	DATE

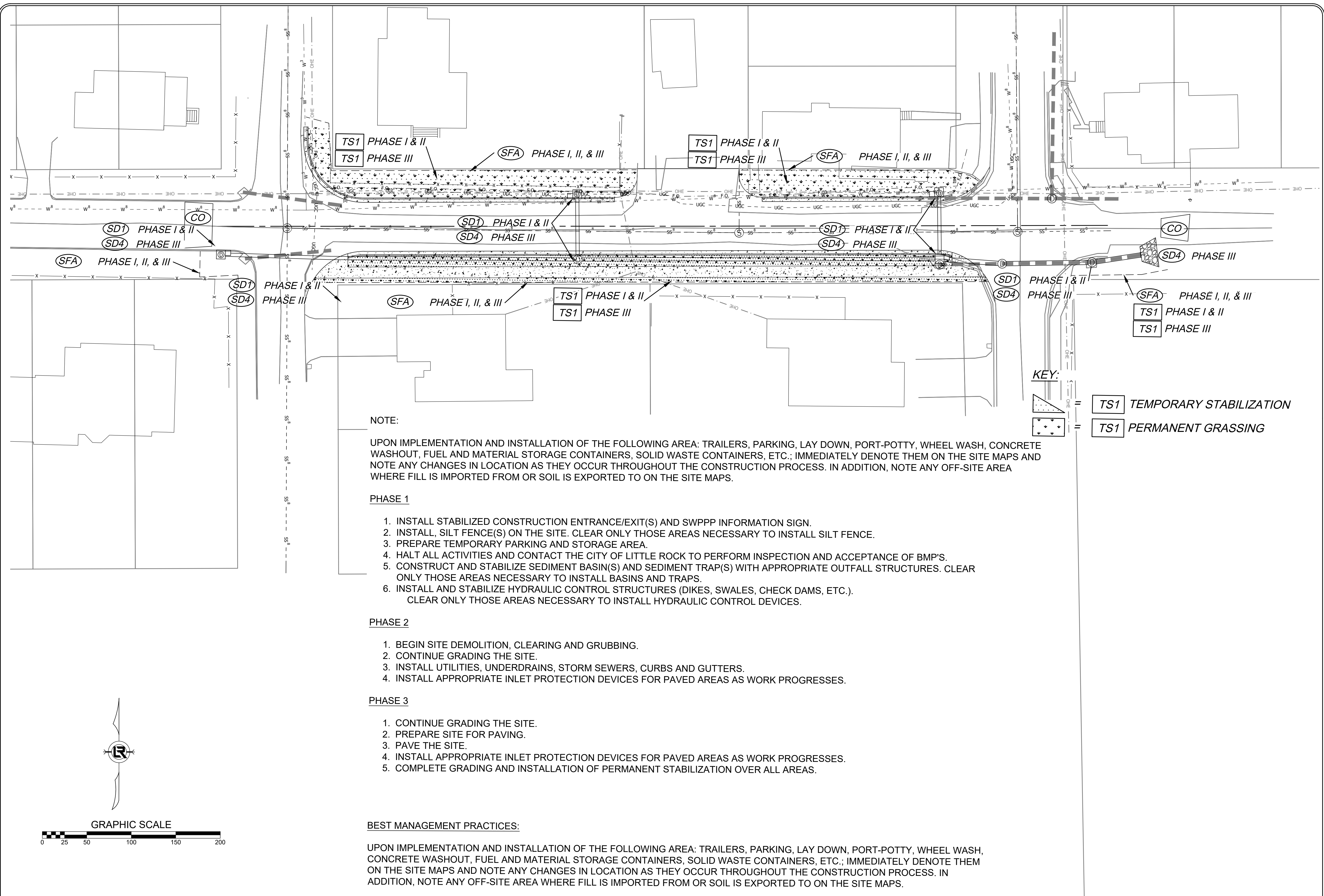
CITY OF LITTLE ROCK, ARKANSAS
WEST 10TH STREET RECONSTRUCTION
CROSS-SECTIONS


 DEPARTMENT OF PUBLIC WORKS
 CIVIL ENGINEERING
 701 W. MARKHAM
 LITTLE ROCK, ARKANSAS 72201



DRAWN BY JJ
DESIGNED KP
CHECKED RB
DATE 06.18.24
SCALE 1"=50'
PROJECT NO. CLR #01-19-ST-23
SHEET NO. C6

REVISIONS	DATE



NOTE:

UPON IMPLEMENTATION AND INSTALLATION OF THE FOLLOWING AREA: TRAILERS, PARKING, LAY DOWN, PORT-POTTY, WHEEL WASH, CONCRETE WASHOUT, FUEL AND MATERIAL STORAGE CONTAINERS, SOLID WASTE CONTAINERS, ETC.; IMMEDIATELY DENOTE THEM ON THE SITE MAPS AND NOTE ANY CHANGES IN LOCATION AS THEY OCCUR THROUGHOUT THE CONSTRUCTION PROCESS. IN ADDITION, NOTE ANY OFF-SITE AREA WHERE FILL IS IMPORTED FROM OR SOIL IS EXPORTED TO ON THE SITE MAPS.

PHASE 1

1. INSTALL STABILIZED CONSTRUCTION ENTRANCE/EXIT(S) AND SWPPP INFORMATION SIGN.
2. INSTALL, SILT FENCE(S) ON THE SITE. CLEAR ONLY THOSE AREAS NECESSARY TO INSTALL SILT FENCE.
3. PREPARE TEMPORARY PARKING AND STORAGE AREA.
4. HALT ALL ACTIVITIES AND CONTACT THE CITY OF LITTLE ROCK TO PERFORM INSPECTION AND ACCEPTANCE OF BMP'S.
5. CONSTRUCT AND STABILIZE SEDIMENT BASIN(S) AND SEDIMENT TRAP(S) WITH APPROPRIATE OUTFALL STRUCTURES. CLEAR ONLY THOSE AREAS NECESSARY TO INSTALL BASINS AND TRAPS.
6. INSTALL AND STABILIZE HYDRAULIC CONTROL STRUCTURES (DIKES, SWALES, CHECK DAMS, ETC.). CLEAR ONLY THOSE AREAS NECESSARY TO INSTALL HYDRAULIC CONTROL DEVICES.

PHASE 2

1. BEGIN SITE DEMOLITION, CLEARING AND GRUBBING.
2. CONTINUE GRADING THE SITE.
3. INSTALL UTILITIES, UNDERDRAINS, STORM SEWERS, CURBS AND GUTTERS.
4. INSTALL APPROPRIATE INLET PROTECTION DEVICES FOR PAVED AREAS AS WORK PROGRESSES.

PHASE 3

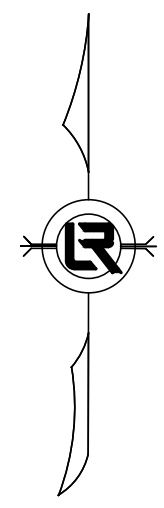
1. CONTINUE GRADING THE SITE.
2. PREPARE SITE FOR PAVING.
3. PAVE THE SITE.
4. INSTALL APPROPRIATE INLET PROTECTION DEVICES FOR PAVED AREAS AS WORK PROGRESSES.
5. COMPLETE GRADING AND INSTALLATION OF PERMANENT STABILIZATION OVER ALL AREAS.

BEST MANAGEMENT PRACTICES:

UPON IMPLEMENTATION AND INSTALLATION OF THE FOLLOWING AREA: TRAILERS, PARKING, LAY DOWN, PORT-POTTY, WHEEL WASH, CONCRETE WASHOUT, FUEL AND MATERIAL STORAGE CONTAINERS, SOLID WASTE CONTAINERS, ETC.; IMMEDIATELY DENOTE THEM ON THE SITE MAPS AND NOTE ANY CHANGES IN LOCATION AS THEY OCCUR THROUGHOUT THE CONSTRUCTION PROCESS. IN ADDITION, NOTE ANY OFF-SITE AREA WHERE FILL IS IMPORTED FROM OR SOIL IS EXPORTED TO ON THE SITE MAPS.

KEY:

- = TS1 TEMPORARY STABILIZATION
- = TS1 PERMANENT GRASSING



GRAPHIC SCALE



CITY OF LITTLE ROCK, ARKANSAS
WEST 10TH STREET WIDENING
EROSION CONTROL PLAN

DEPARTMENT OF PUBLIC WORKS
 CIVIL ENGINEERING
 701 W. MARKHAM
 LITTLE ROCK, ARKANSAS 72201

STATE OF ARKANSAS
 REGISTERED PROFESSIONAL ENGINEER
 No. 7115
 RODNEY BREUER

DRAWN BY JJ
DESIGNED KP
CHECKED RB
DATE 06.18.24
SCALE 1"=20'
PROJECT NO. CLR #01-19-ST-23
SHEET NO. C7

FINAL- 100% SUBMITTAL