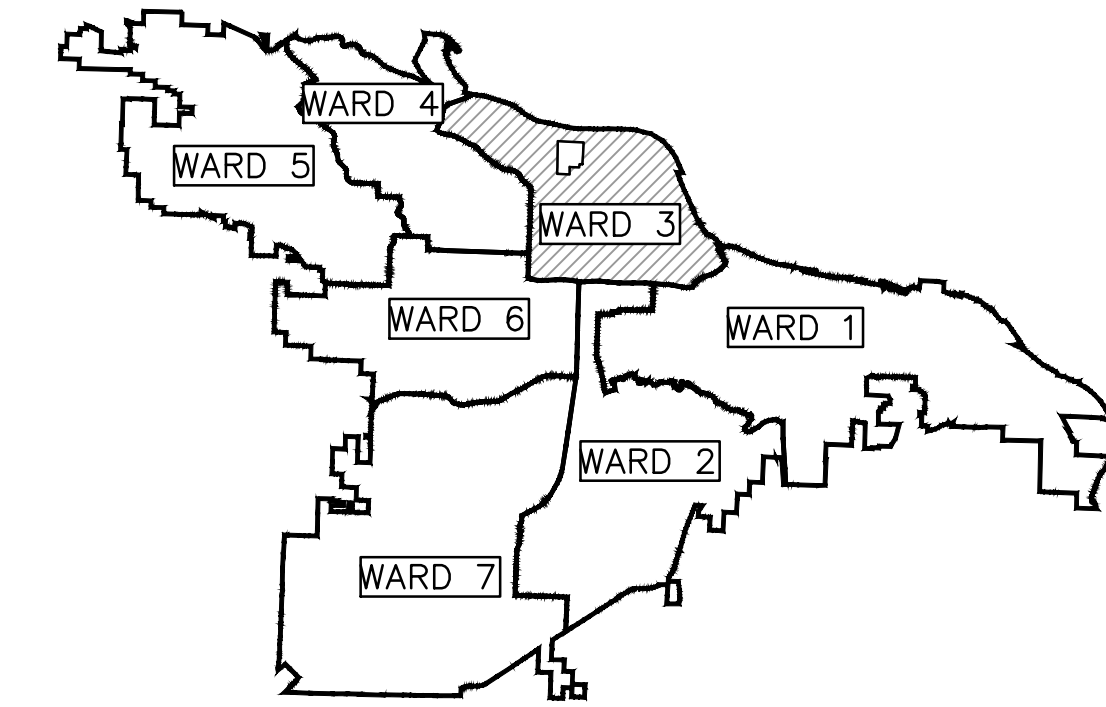


CLR PROJECT 03-18-ST-56

"F" STREET (SPRUCE TO PALM)

RECONSTRUCTION



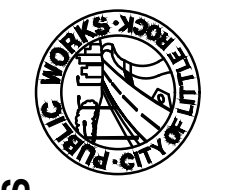
PROJECT LOCATION – WARD 3

REVISIONS	DATE


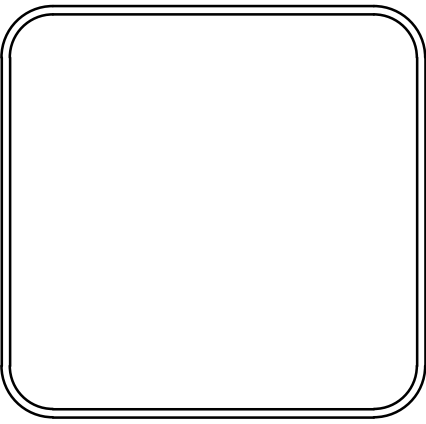
CITY OF LITTLE ROCK, ARKANSAS

"F" STREET (SPRUCE TO PALM) RECONSTRUCTION

COVER SHEET



DEPARTMENT OF PUBLIC WORKS
CIVIL ENGINEERING
701 W. MARKHAM
LITTLE ROCK, ARKANSAS 72201

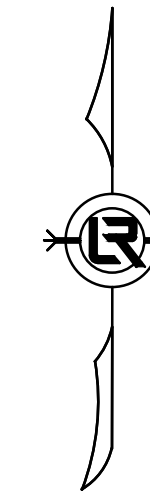
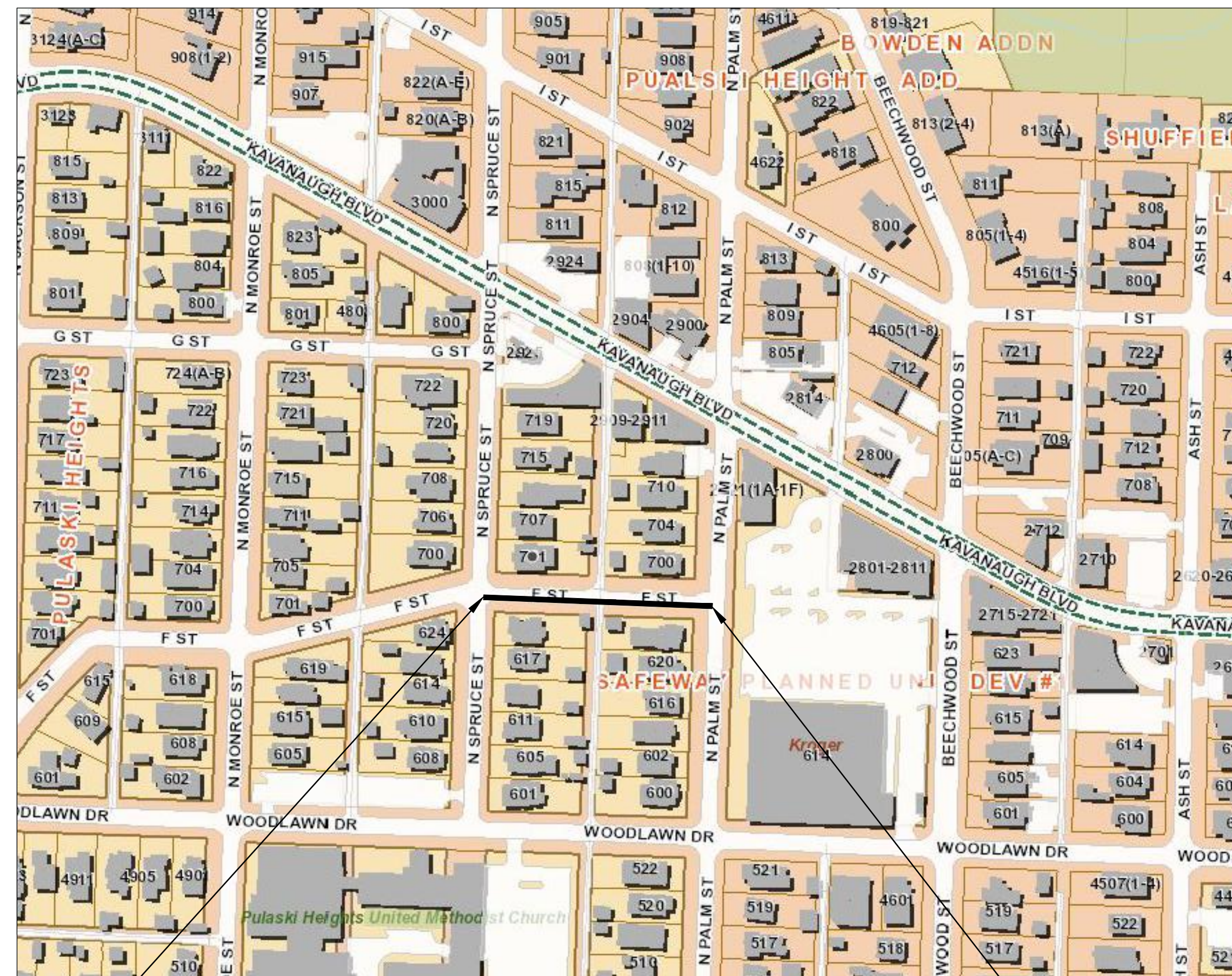
DRAWN BY CV
DESIGNED CV
CHECKED JB
DATE 6/9/2024
SCALE N.T.S.
PROJECT NO. CLR # 03-18-ST-56
SHEET NO. C1

90% PRELIMINARY DESIGN

FOR REVIEW ONLY

These documents are for Design Review and not intended for Construction, Bidding or Permit Purposes. They were prepared by, or under the supervision of:

CHRISTIAN VILLARREAL P.E.# 21648 6/9/2024
Date



BEGIN PROJECT
"F" STREET STREET
CL STA 10+10.37
NORTHING = 154536.1861
EASTING= 1214247.3423

**PROJECT
LOCATION**

END PROJECT
"F" STREET
CL STA 13+49.10
NORTHING = 154524.3085
EASTING = 1214585.8645

DEPARTMENT OF PUBLIC WORKS
CIVIL ENGINEERING
701 WEST MARKHAM STREET
LITTLE ROCK, ARKANSAS 72201

**2023-2025
BOND PROGRAM**

INDEX OF SHEETS:

- C1 COVER SHEET
- C2 GENERAL NOTES, LEGEND AND QUANTITIES
- C3 TYPICAL SECTIONS
- C4 EXISTING CONDITIONS
- C5 PLAN & PROFILE
- C6 DRIVEWAY DETAILS
- C7 - C8 CROSS SECTIONS
- C9 PROJECT LAYOUT
- C10 EROSION CONTROL



GARVER SURVEYOR:
4701 NORTHSORE DRIVE
NORTH LITTLE ROCK, AR 72118
PHONE: 501-376-3633
WWW.GARVERUSA.COM

ENGINEER OF RECORD:

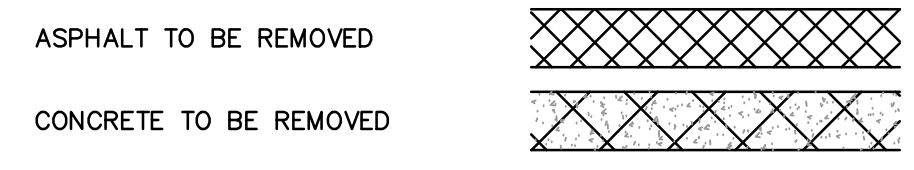
ICONIC CONSULTING GROUP, INC.

2020 WEST 3RD STREET, SUITE 504
LITTLE ROCK, AR 72205
PHONE: 501-215-5807 FAX:501-227-8302
WWW.ICONICCG.COM

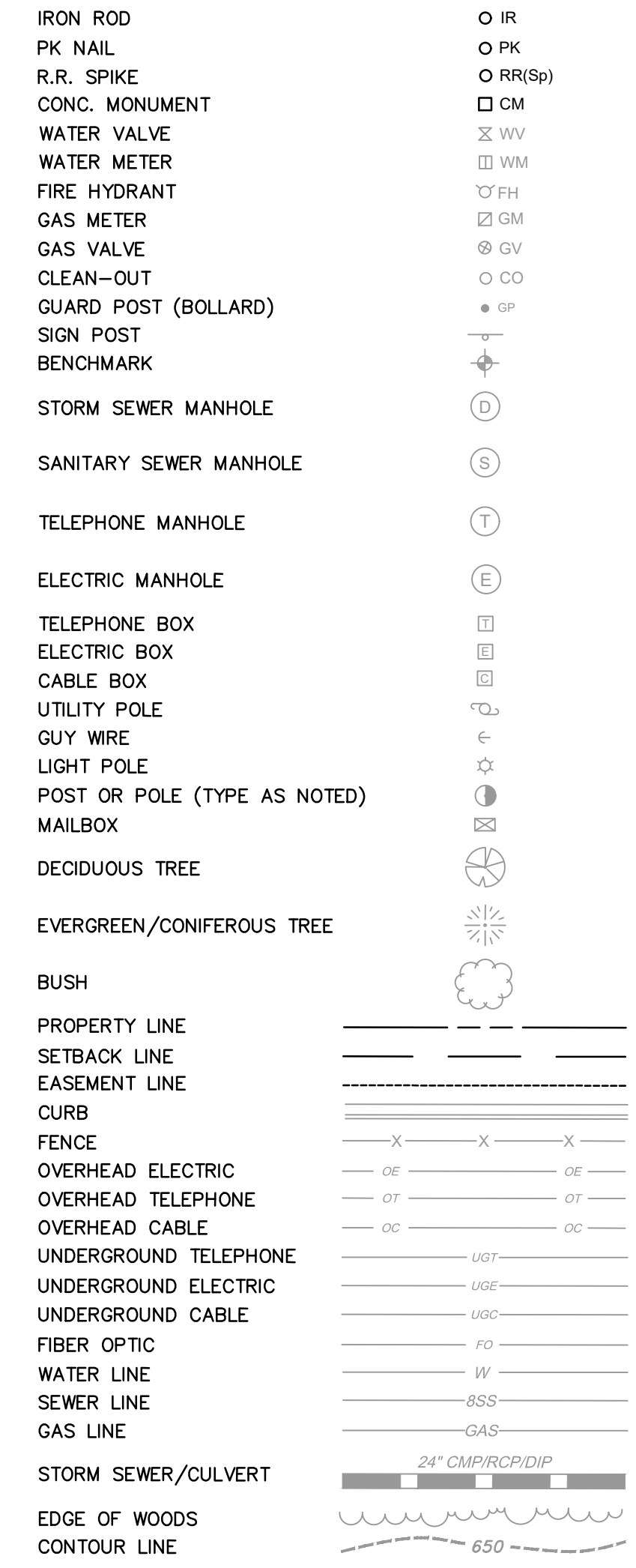
REVISIONS	DATE

CLR PROJECT 03-18-ST-56			
		2024/06/09	
ITEM #	ITEM DESCRIPTION	UNIT	QUANTITY
2.01	SITE PREPARATION	LS	1
3.01	UNCLASSIFIED EXCAVATION	CY	440
4.01	AGGREGATE BASE COURSE (CLASS 7)	TON	397
5.01	TACK COAT	GAL	59
6.01	ACHM SURFACE COURSE	TON	105
7.06	CONCRETE DRIVEWAY (6" THICK), STANDARD FINISH	SF	808
7.08	ALLEY TURNOUT (8" THICK)	SF	649
8.03	CONCRETE CURB & GUTTER (CLASS 3)	LF	740
9.04	CONCRETE SIDEWALK, 4" THICK	SF	1397
10.01	JUNCTION BOX (5')	EA	1
10.01A	JUNCTION BOX (6')	EA	1
10.05	CURB INLET - 5' BOX	EA	6
10.07	WING 3' EXTENSION	EA	9
13.12S	STORM DRAIN PIPE, 12" (SIDE)	LF	8
13.12C	STORM DRAIN PIPE, 15" (CROSS)	LF	33
13.12C	STORM DRAIN PIPE, 18" (CROSS)	LF	30
13.24S	STORM DRAIN PIPE, 18" (SIDE)	LF	15
13.36S	STORM DRAIN PIPE, 30" (SIDE)	LF	163
13.36C	STORM DRAIN PIPE, 36" (CROSS)	LF	29
13.36S	STORM DRAIN PIPE, 36" (SIDE)	LF	145
13.61	TIE INTO EXISTING JUNCTION BOX	EA	1
13.62	TIE INTO EXISTING CONCRETE PIPE	EA	2
14.01	SOLID SODDING (BERMUDA) (INCLUDES 4" TOPSOIL)	SY	158
16.01	MAINTENANCE OF TRAFFIC	LS	1
18.50	ACCESS RAMP- TYPE 3	SF	195
19.01	FINAL CLEAN-UP	LS	1
24.06	SEDIMENT BARRIER, SILT FENCE (SD1)	EA	7
24.09	SEDIMENT BARRIER, BLOCK (SD4)	EA	7
24.11	SILT FENCE - TYPE A (SFA)	LF	562
24.02	CHECK DAM (CD)	CY	2
26.01	TRENCH & EXCAVATION SAFETY	LS	1
SP	SANITARY SEWER MANHOLE ADJUSTMENT	EA	1
SP	AS-BUILT SURVEY OF DRAINAGE SYSTEM	EA	1

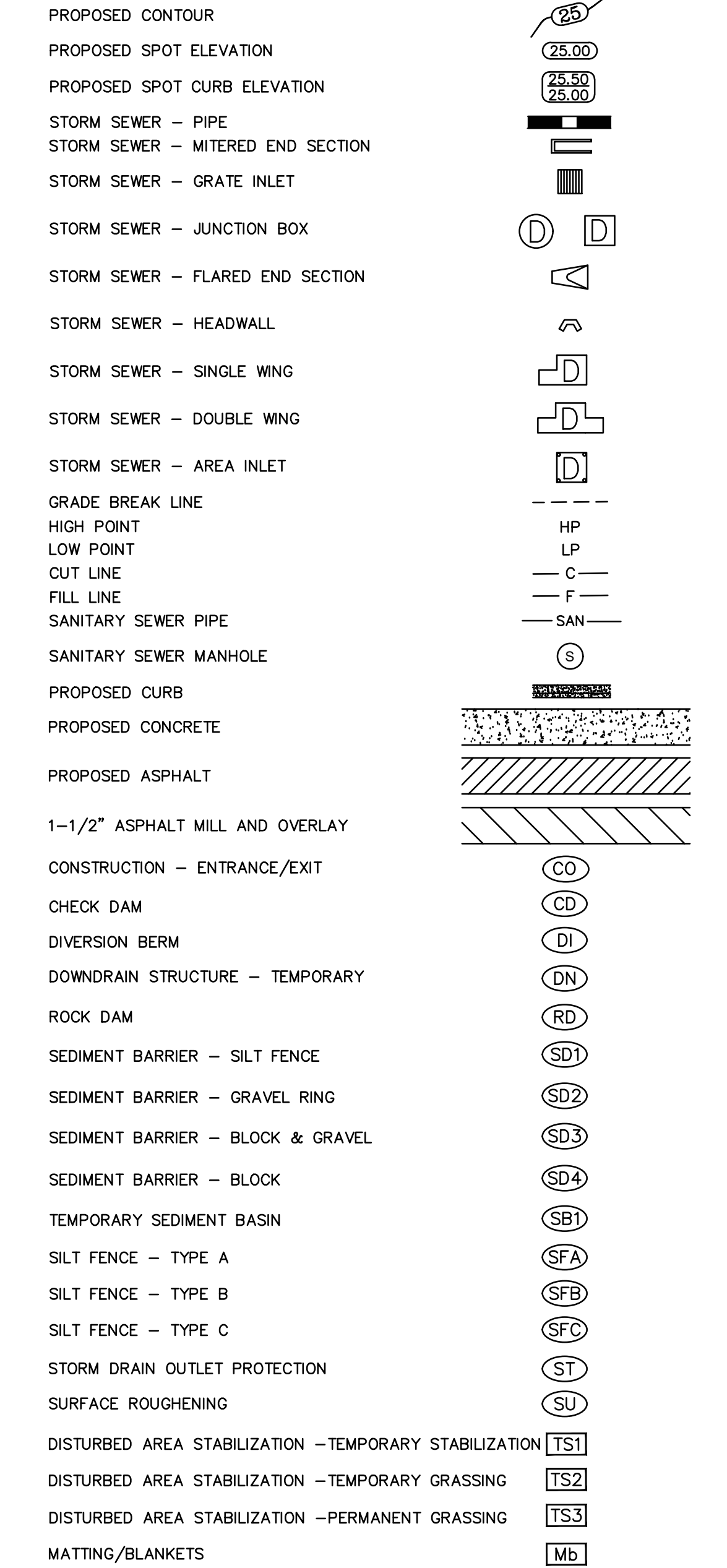
DEMO



EXISTING



PROPOSED



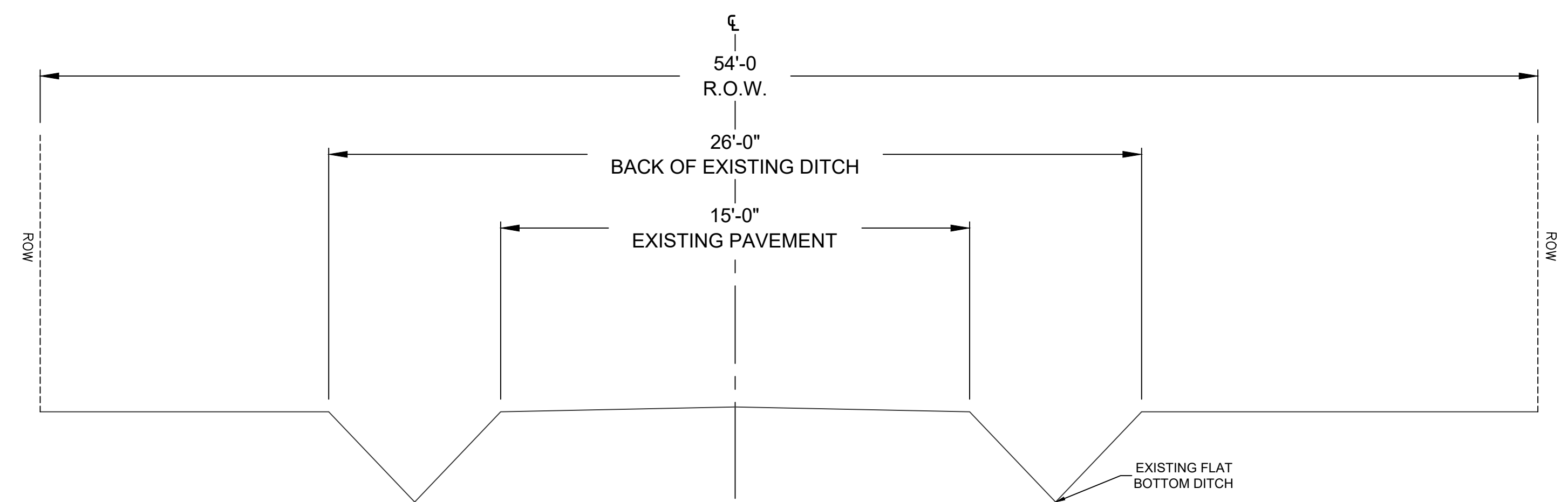
CITY OF LITTLE ROCK, ARKANSAS
"F" STREET (SPRUCE TO PALM) RECONSTRUCTION
GENERAL NOTES, LEGEND AND QUANTITIES

DEPARTMENT OF PUBLIC WORKS
 CIVIL ENGINEERING
 701 W. MARKHAM
 LITTLE ROCK, ARKANSAS 72201

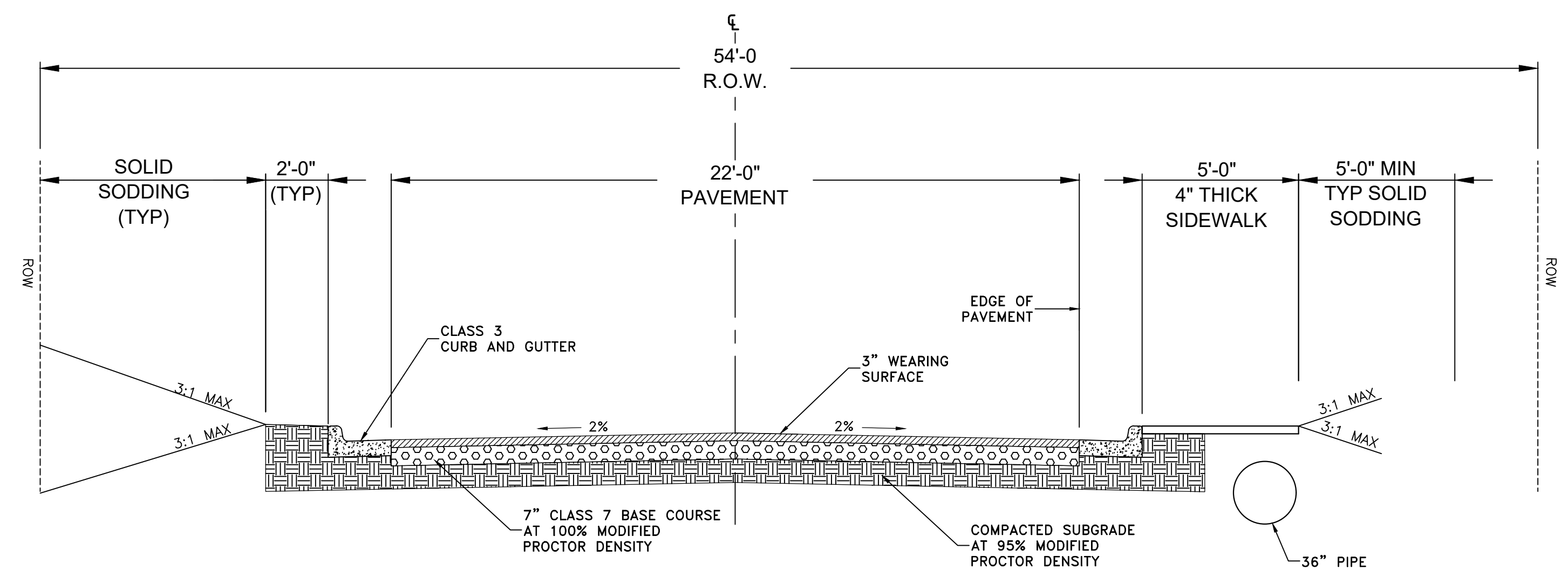
90% PRELIMINARY DESIGN
FOR REVIEW ONLY
 These documents are for Design Review and not intended for Construction, Bidding or Permit Purposes. They were prepared by, or under the supervision of:
CHRISTIAN VILLARREAL P.E.# 21648 6/9/2024
 Date

DRAWN BY
CV
DESIGNED
CV
CHECKED
JB
DATE
6/9/2024
SCALE
N.T.S.
PROJECT NO.
CLR # 03-18-ST-56
SHEET NO.
C2

REVISIONS	DATE

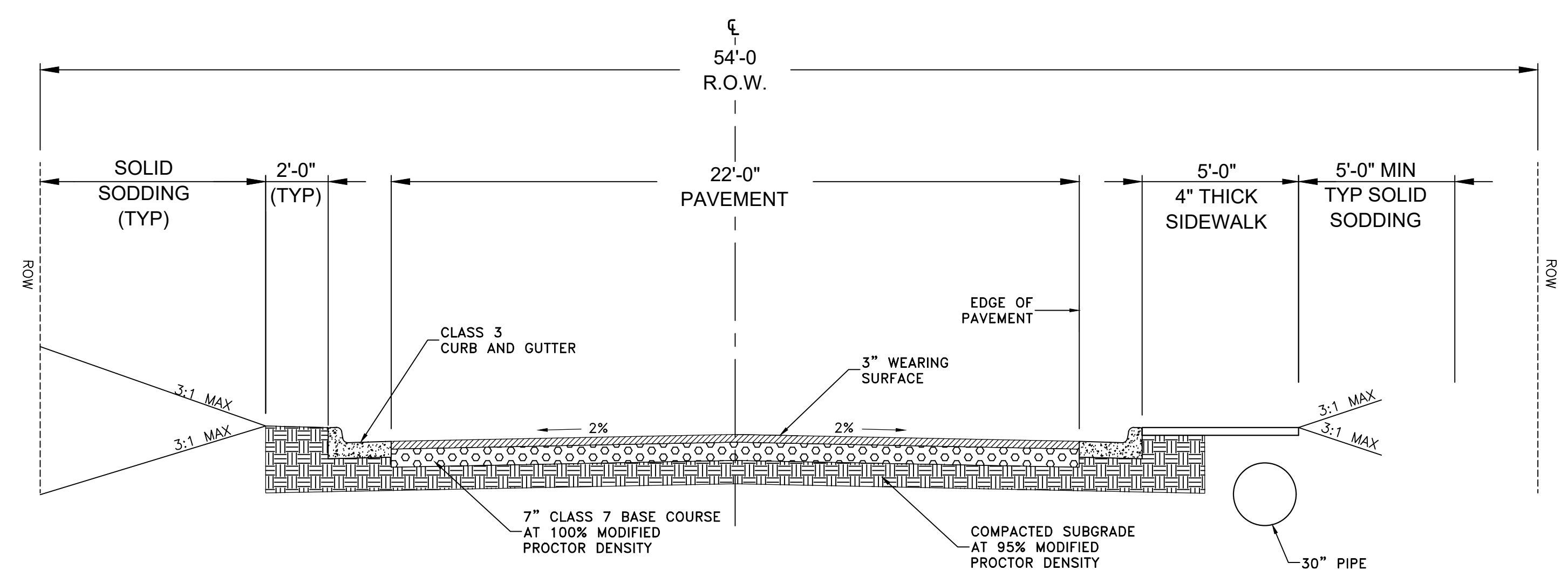


"F" STREET EXISTING TYPICAL SECTION



"F" STREET PROPOSED TYPICAL SECTION

STA 10+10.37 TO STA 11+72.19



"F" STREET PROPOSED TYPICAL SECTION

STA 11+72.19 TO STA 13+49.10

90% PRELIMINARY DESIGN

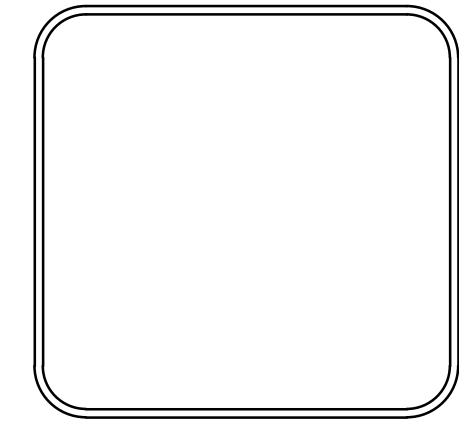
FOR REVIEW ONLY

These documents are for Design Review and not intended for Construction, Bidding or Permit Purposes. They were prepared by, or under the supervision of:

CHRISTAN VILLARREAL P.E.# 21648 6/9/2024
Date

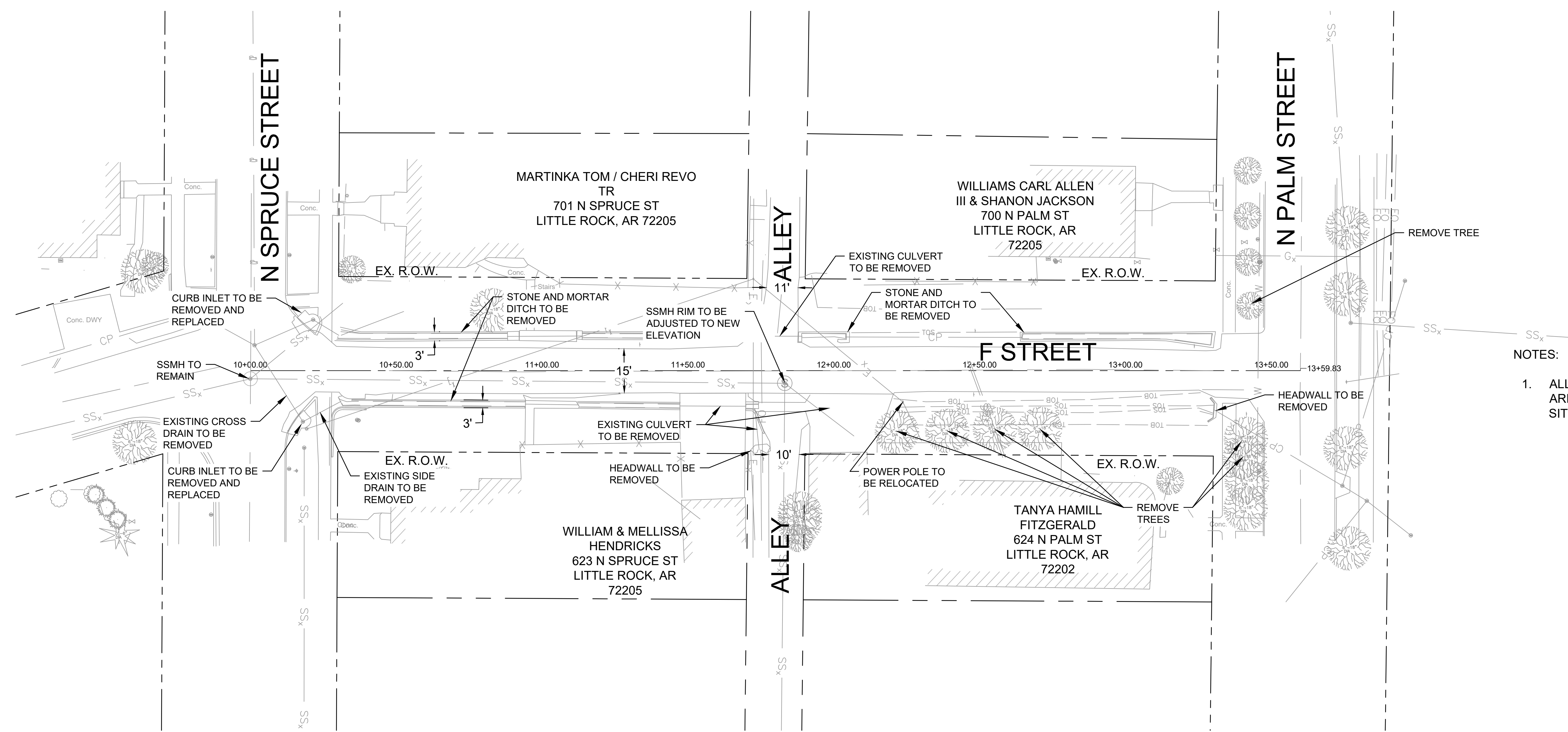
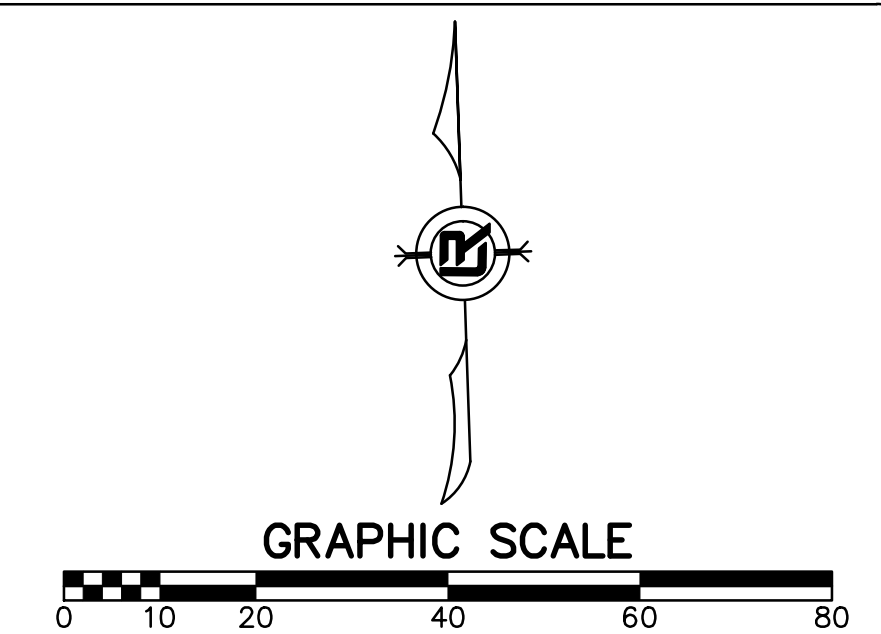
CITY OF LITTLE ROCK, ARKANSAS
"F" STREET (SPRUCE TO PALM) RECONSTRUCTION
TYPICAL SECTION

DEPARTMENT OF PUBLIC WORKS
CIVIL ENGINEERING
701 W. MARKHAM
LITTLE ROCK, ARKANSAS 72201



DRAWN BY
CV
DESIGNED
CV
CHECKED
JB
DATE
6/9/2024
SCALE
N.T.S.
PROJECT NO.
CLR # 03-18-ST-56
SHEET NO.
C3

REVISIONS	DATE



NOTES:

1. ALL REMOVAL ITEMS ARE SUBSIDIARY TO SITE PREPARATION.

90% PRELIMINARY DESIGN

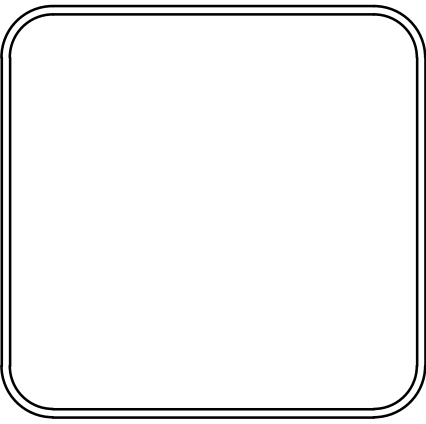
FOR REVIEW ONLY

These documents are for Design Review and not intended for Construction, Bidding or Permit Purposes. They were prepared by, or under the supervision of:

CHRISTIAN VILLARREAL P.E.# 21648 6/9/2024
Date

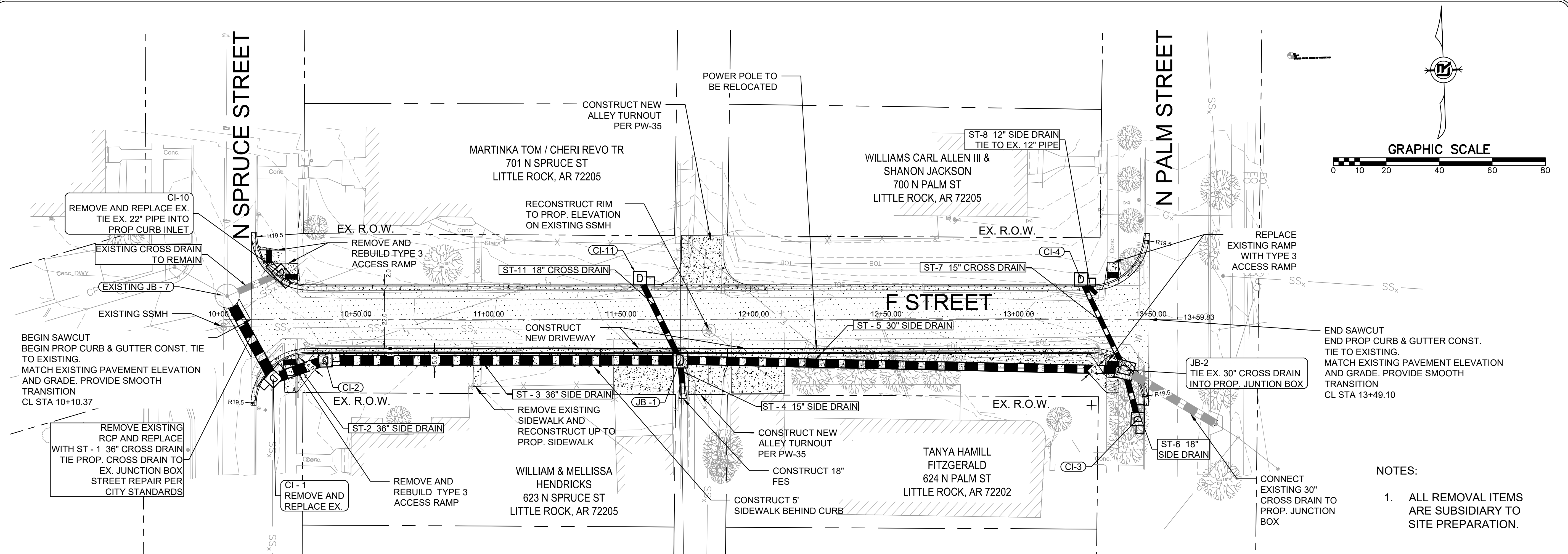
CITY OF LITTLE ROCK, ARKANSAS
"F" STREET (SPRUCE TO PALM) RECONSTRUCTION
EXISTING CONDITIONS

DEPARTMENT OF PUBLIC WORKS
CIVIL ENGINEERING
701 W. MARKHAM
LITTLE ROCK, ARKANSAS 72201

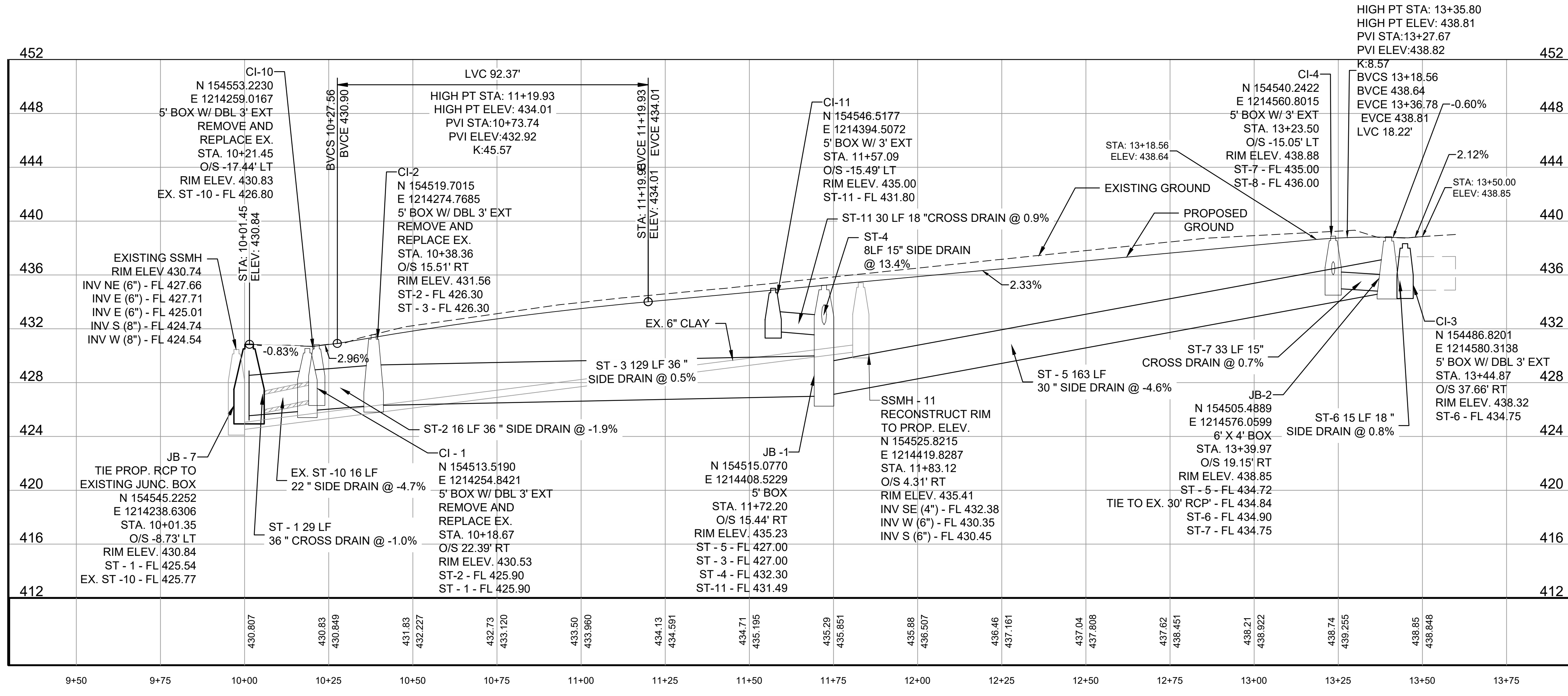


DRAWN BY CV
DESIGNED CV
CHECKED JB
DATE 6/9/2024
SCALE 1" = 20'
PROJECT NO. CLR # 03-18-ST-56
SHEET NO. C4

REVISIONS	DATE



- NOTES:
1. ALL REMOVAL ITEMS ARE SUBSIDIARY TO SITE PREPARATION.



90% PRELIMINARY DESIGN

FOR REVIEW ONLY

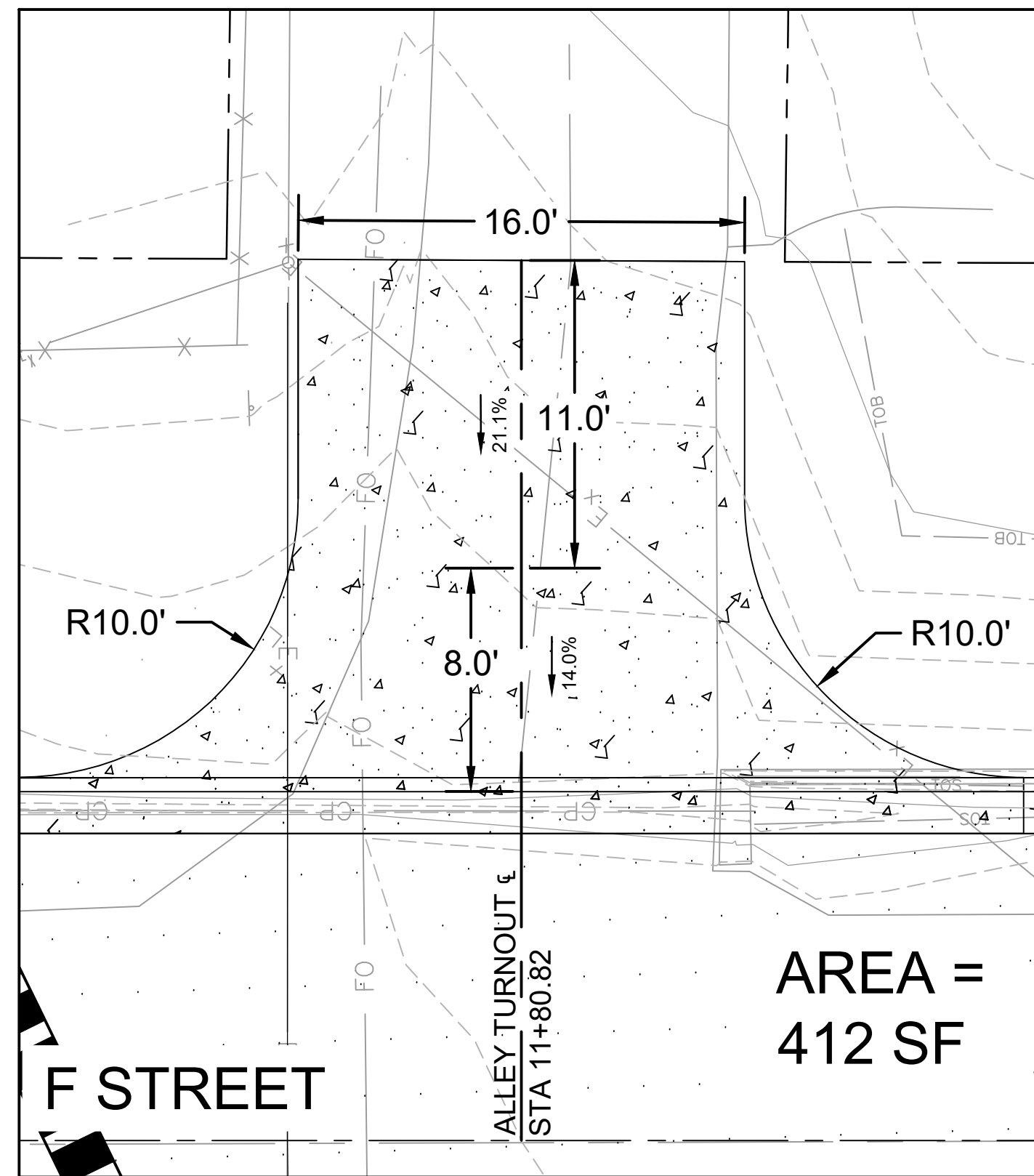
These documents are for Design Review and not intended for Construction, Bidding or Permit Purposes. They were prepared by, or under the supervision of:

CHRISTIAN VILLARREAL P.E. # 21648 6/10/2024
Date

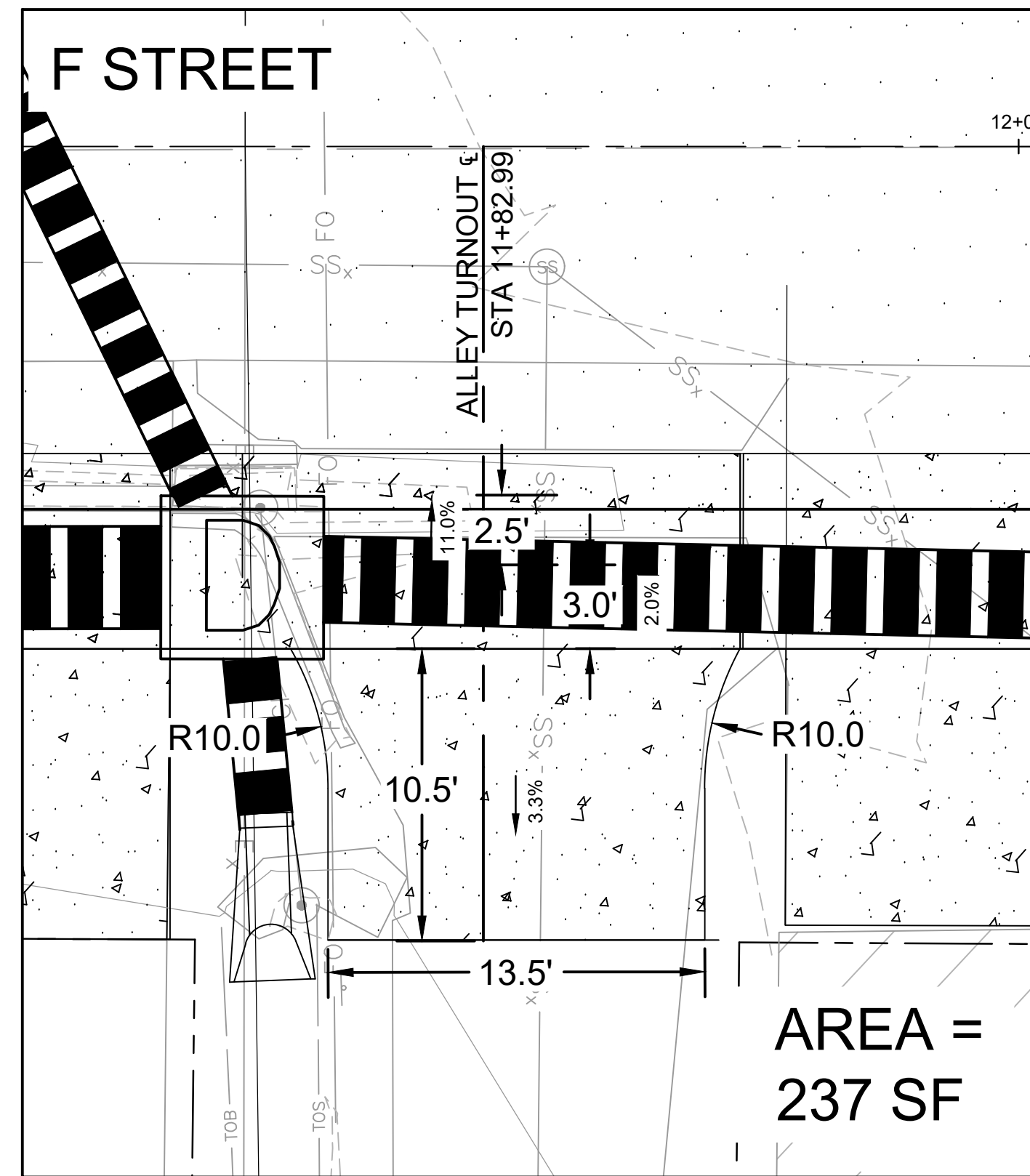
CITY OF LITTLE ROCK, ARKANSAS
"F" STREET (SPRUCE TO PALM) RECONSTRUCTION
PLAN AND PROFILE

DEPARTMENT OF PUBLIC WORKS
 CIVIL ENGINEERING
 701 W. MARKHAM
 LITTLE ROCK, ARKANSAS 72201

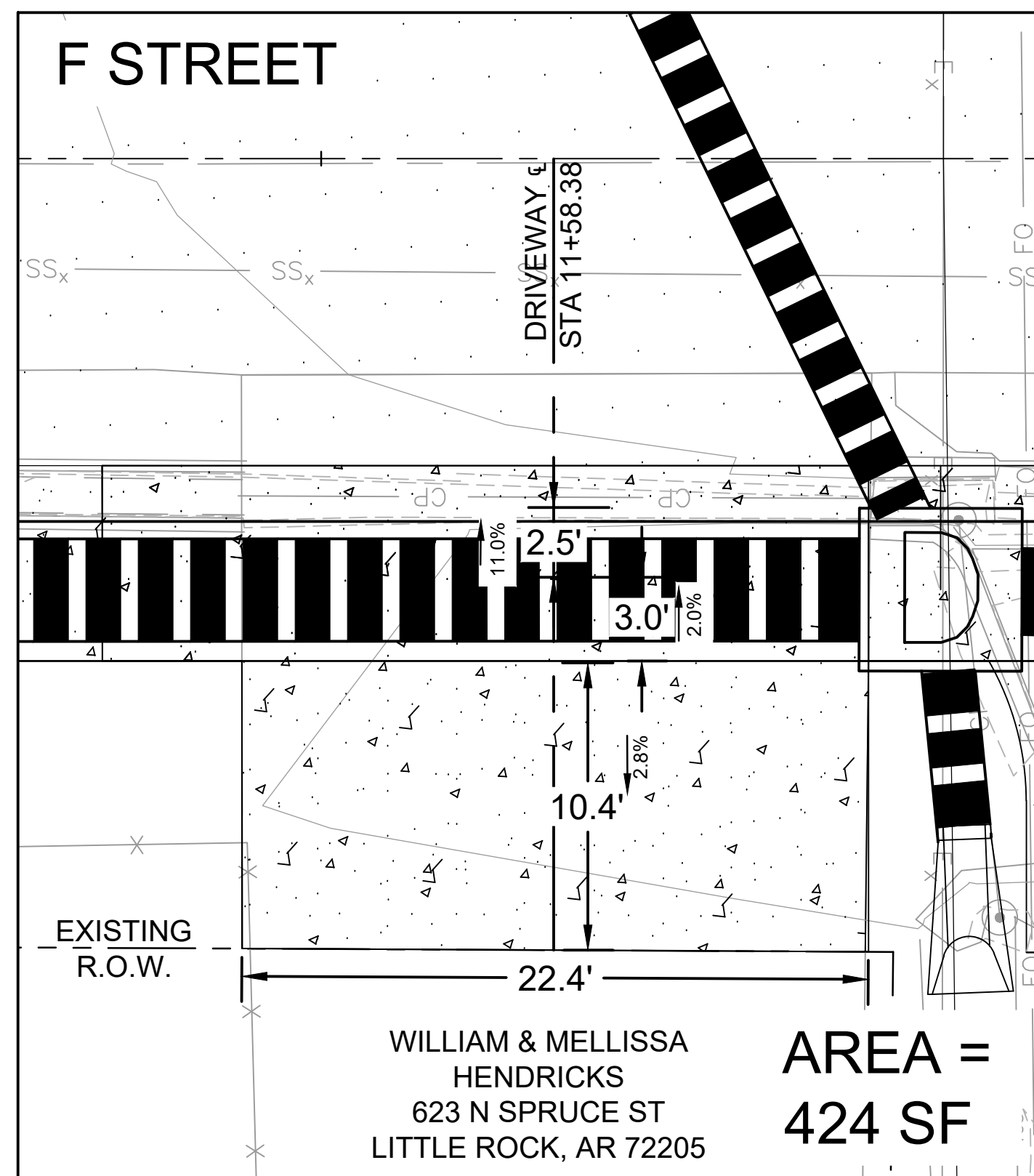
DRAWN BY
CV
DESIGNED
CV
CHECKED
JB
DATE
6/10/2024
SCALE
1" = 20' H, 1" = 5' V
PROJECT NO.
CLR #03-18-ST-56
SHEET NO.
C5



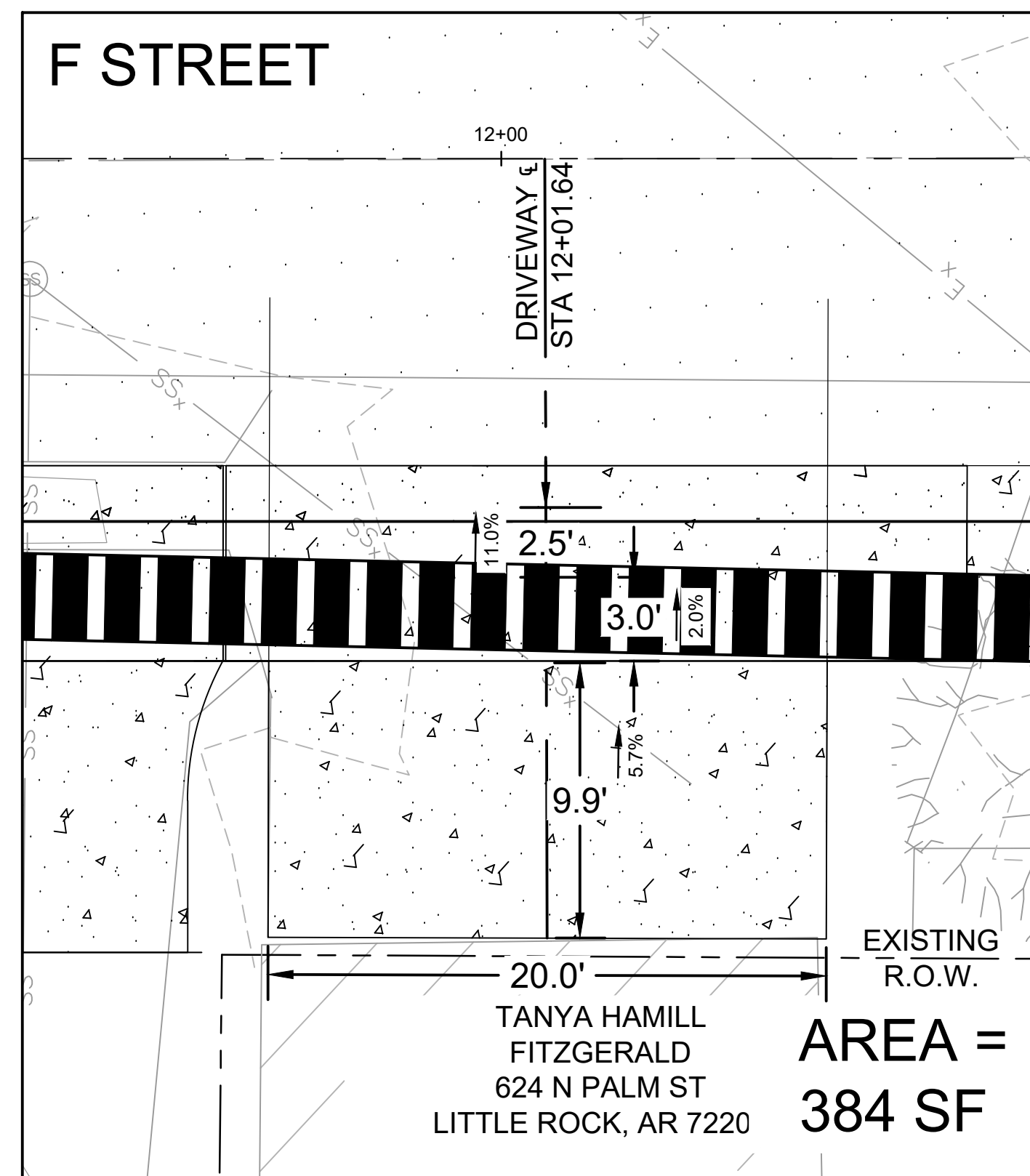
ALLEY TURNOUT AT
STA 11+80.82



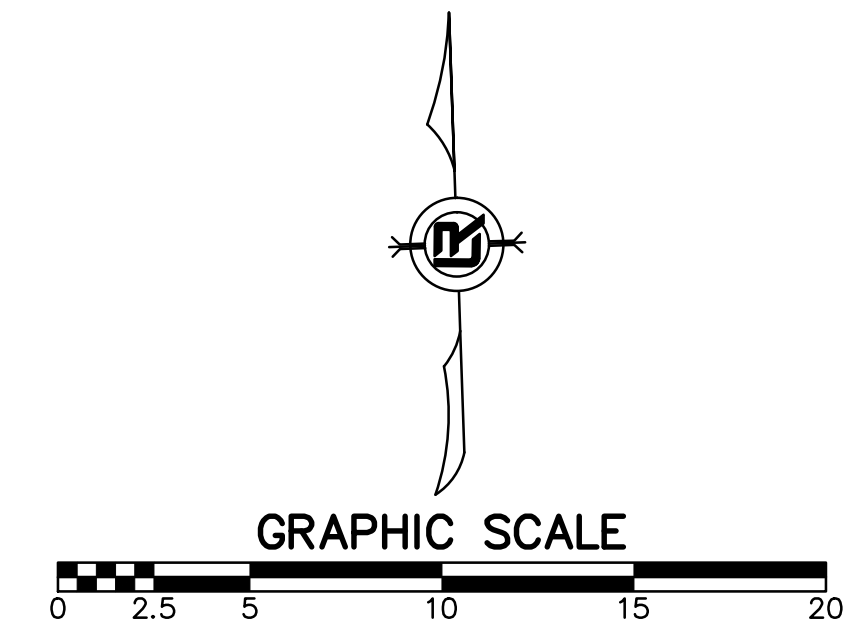
ALLEY TURNOUT AT
STA 11+82.99



DRIVEWAY AT
STA 11+58.38



DRIVEWAY AT
STA 12+01.64



NOTES:

1. DRIVEWAYS AND ALLEY TURNOUTS HAVE A 1.5" LIP AT THE FACE OF THE CURB.
2. ALLEY TURNOUTS SHALL BE CONSTRUCTED MONOLITHIC WITH THE CURB.
3. ALL DRIVEWAY GRADES SHALL BE ROUND WITH A 2' RADIUS.

90% PRELIMINARY DESIGN

FOR REVIEW ONLY

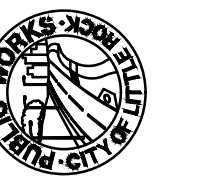
These documents are for Design Review and not intended for Construction, Bidding or Permit Purposes. They were prepared by, or under the supervision of:

CHRISTIAN VILLARREAL P.E.# 21648 6/9/2024
Date

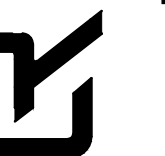
REVISIONS DATE

CITY OF LITTLE ROCK, ARKANSAS
"F" STREET (SPRUCE TO PALM) RECONSTRUCTION

DRIVEWAY DETAILS



DEPARTMENT OF PUBLIC WORKS
CIVIL ENGINEERING
701 W. MARKHAM
LITTLE ROCK, ARKANSAS 72201



DRAWN BY

CV

DESIGNED

CV

CHECKED

JB

DATE

6/9/2024

SCALE

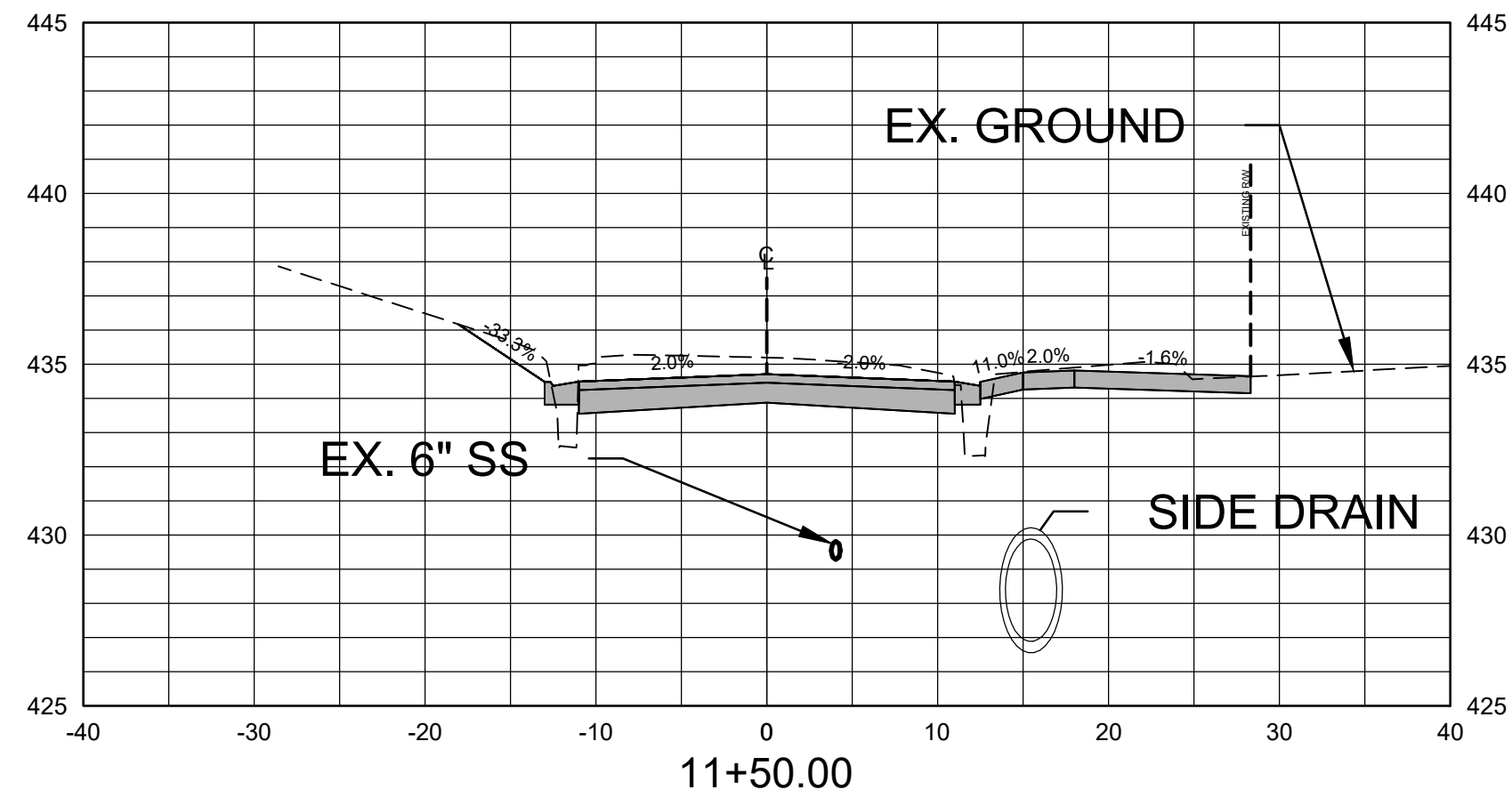
1" = 5'

PROJECT NO.

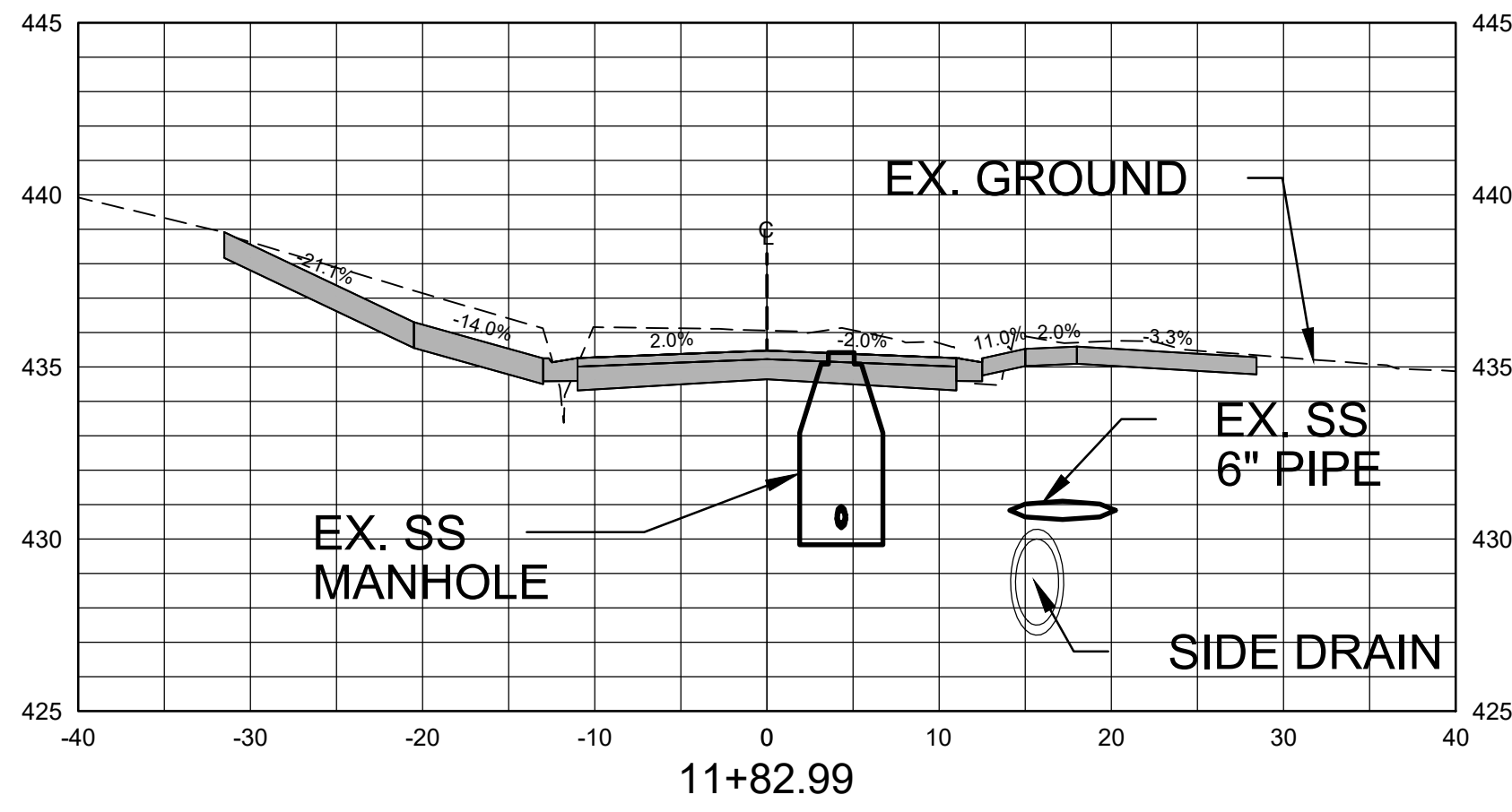
CLR # 03-18-ST-56

SHEET NO.

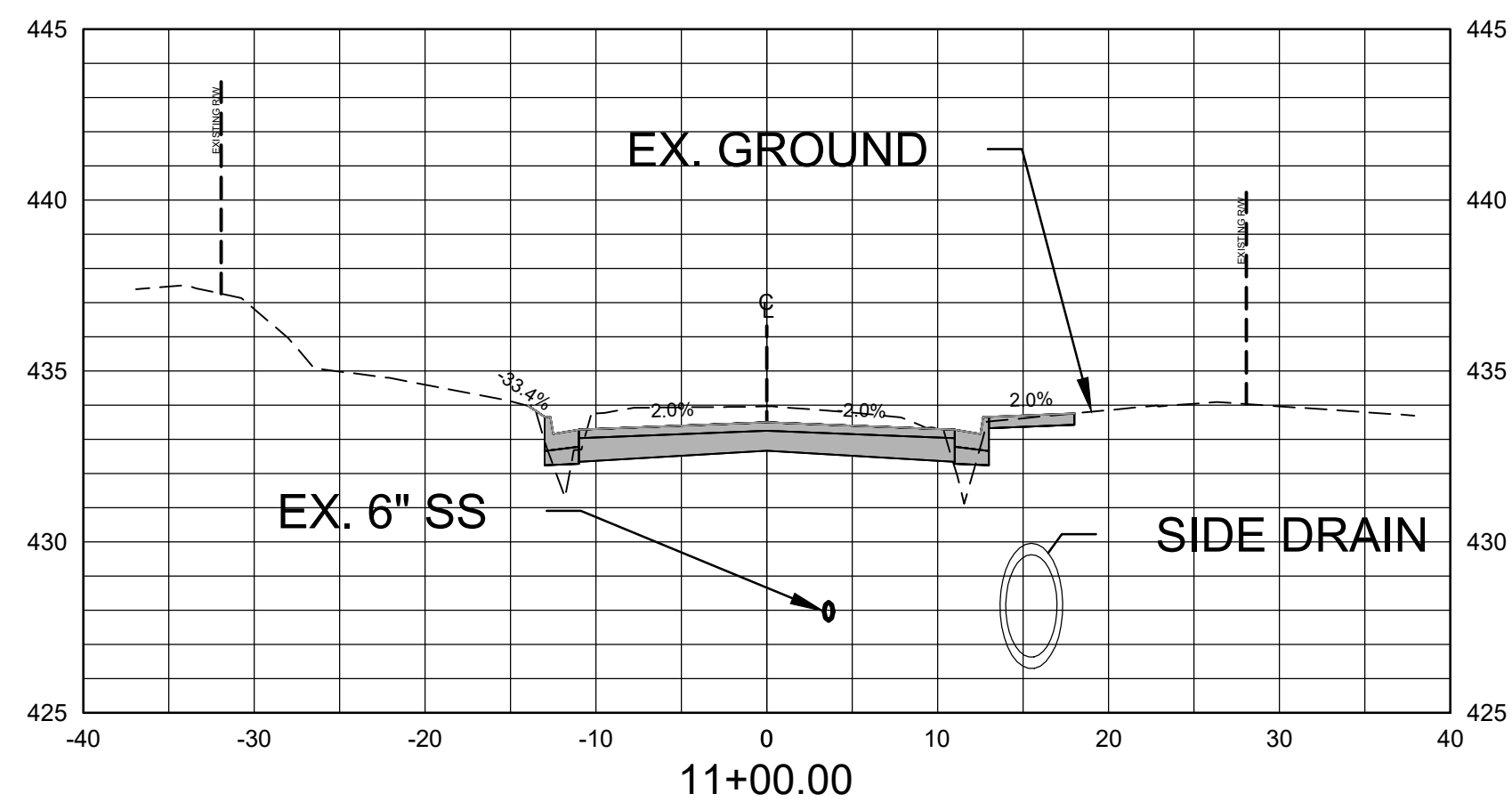
C6



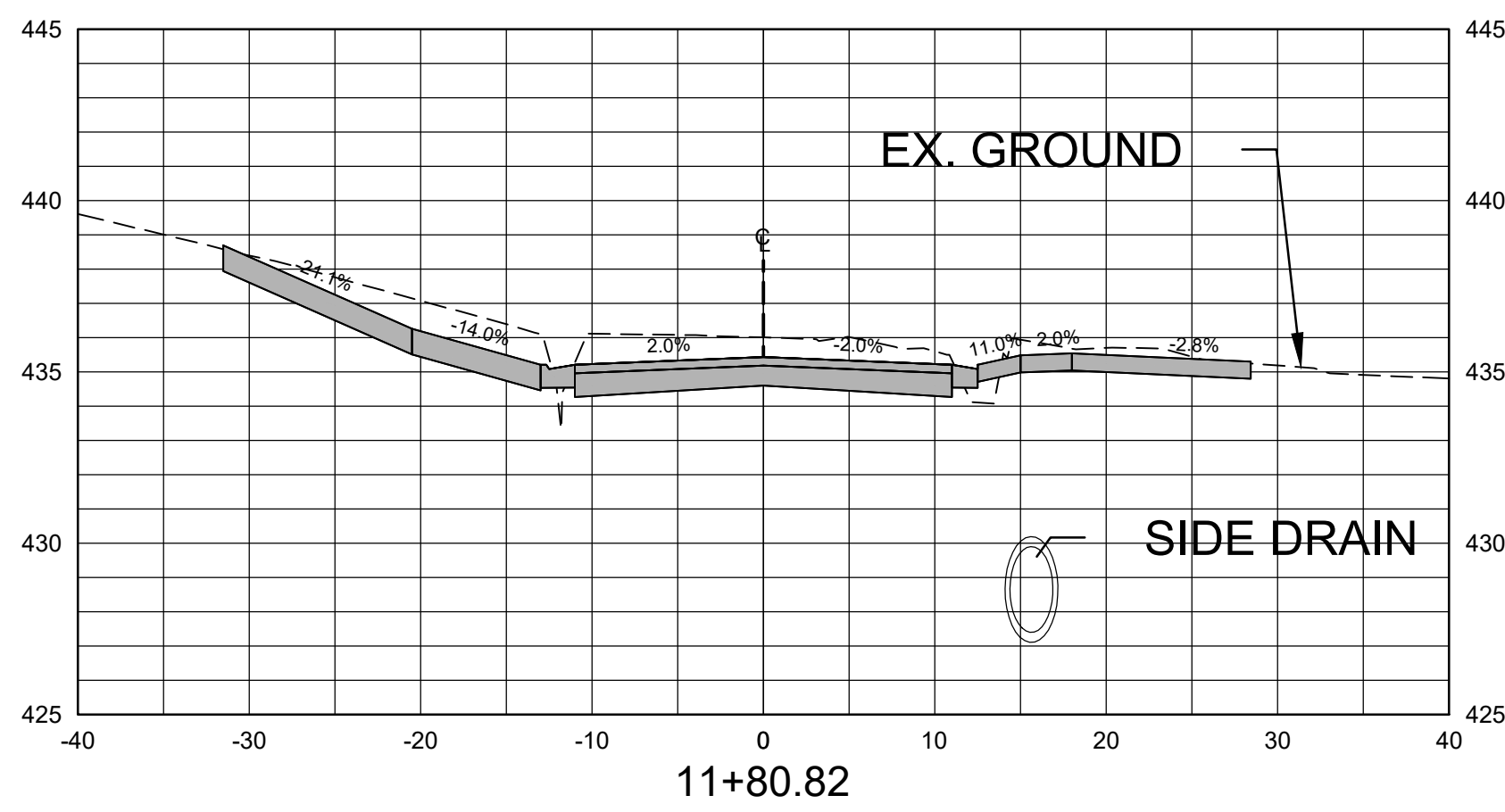
Total Volume at Station 11+50.00	
Cut Area	54.28
Fill Area	3.81
Cut Vol	79.16
Fill Vol	4.84
Cum Cut Vol	145.00
Cum Fill Vol	7.20
Net Vol	137.80



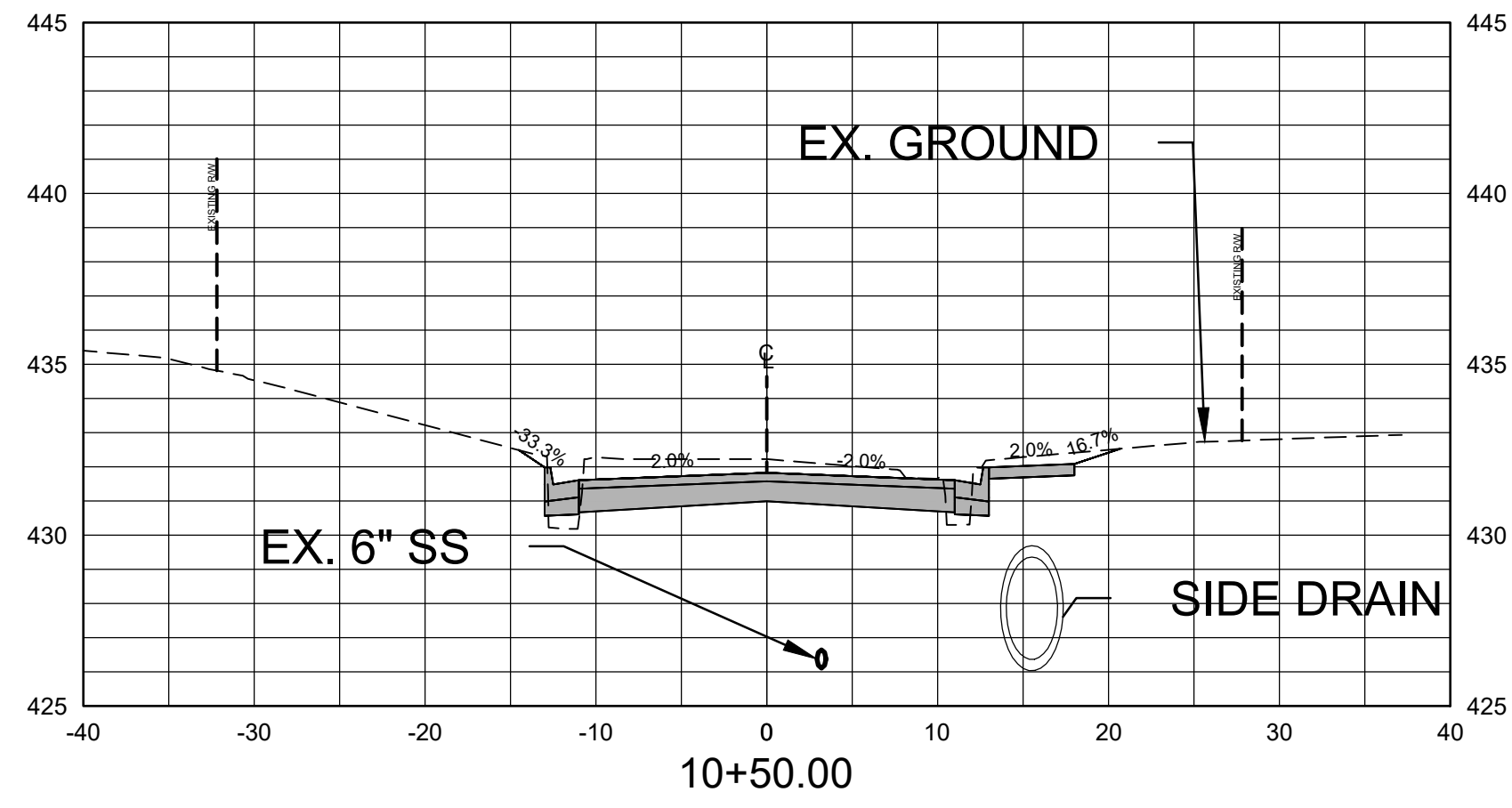
Total Volume at Station 11+82.99	
Cut Area	77.23
Fill Area	0.64
Cut Vol	5.99
Fill Vol	0.07
Cum Cut Vol	226.32
Cum Fill Vol	9.63
Net Vol	216.69



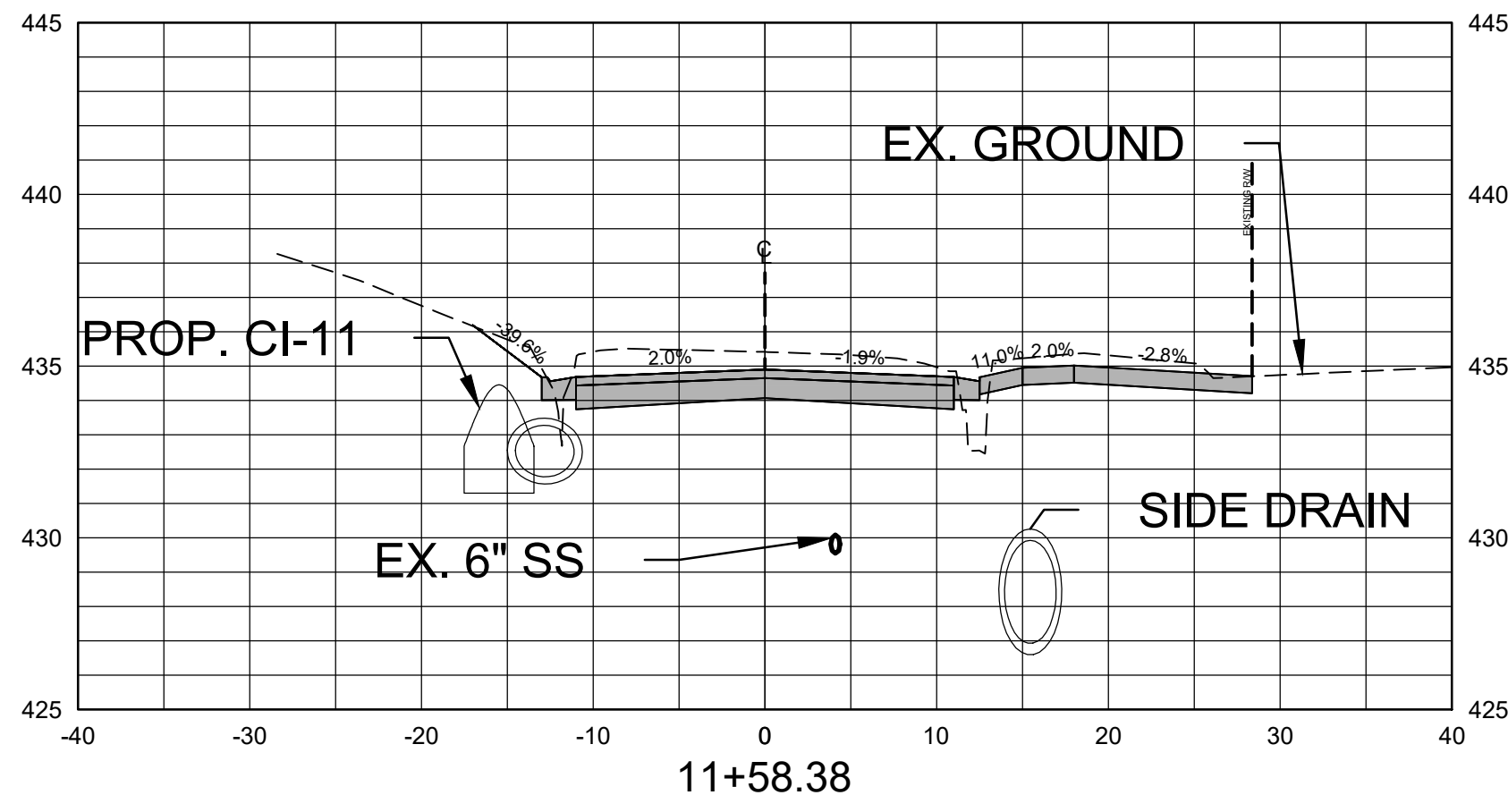
Total Volume at Station 11+00.00	
Cut Area	31.22
Fill Area	1.43
Cut Vol	65.84
Fill Vol	2.35
Cum Cut Vol	65.84
Cum Fill Vol	2.35
Net Vol	63.48



Total Volume at Station 11+80.82	
Cut Area	72.35
Fill Area	1.18
Cut Vol	56.89
Fill Vol	1.42
Cum Cut Vol	220.33
Cum Fill Vol	9.56
Net Vol	210.77



Total Volume at Station 10+50.00	
Cut Area	39.89
Fill Area	1.11
Cut Vol	0.00
Fill Vol	0.00
Cum Cut Vol	0.00
Cum Fill Vol	0.00
Net Vol	0.00



Total Volume at Station 11+58.38	
Cut Area	64.54
Fill Area	2.24
Cut Vol	18.45
Fill Vol	0.94
Cum Cut Vol	163.44
Cum Fill Vol	8.13
Net Vol	155.31

90% PRELIMINARY DESIGN

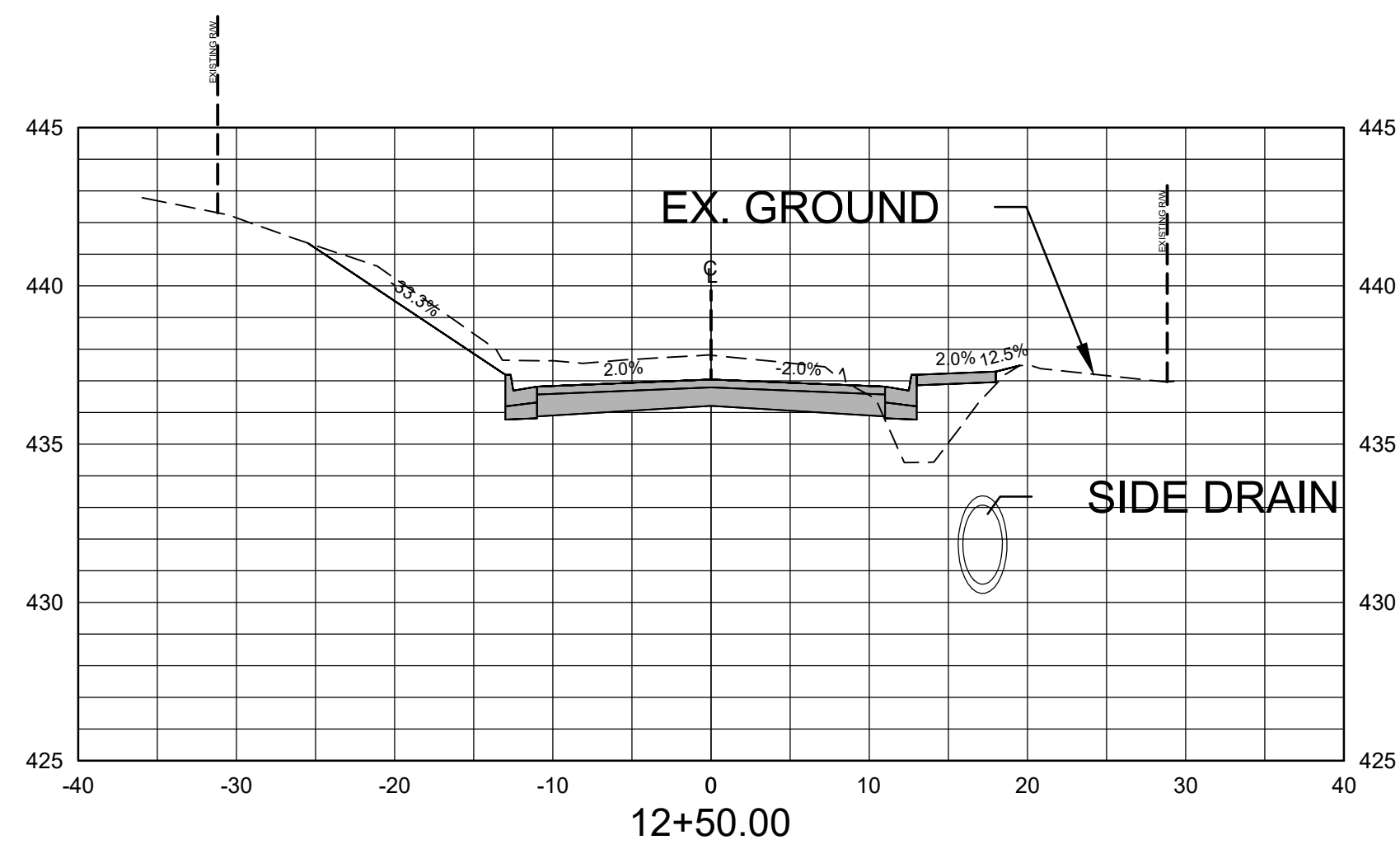
FOR REVIEW ONLY
 These documents are for Design Review and not intended for construction, Bidding or Permit Purposes. They were prepared by, or under the supervision of:
 CHRISTIAN VILLARREAL P.E.# 21648 6/9/2024
 Date

REVISIONS DATE

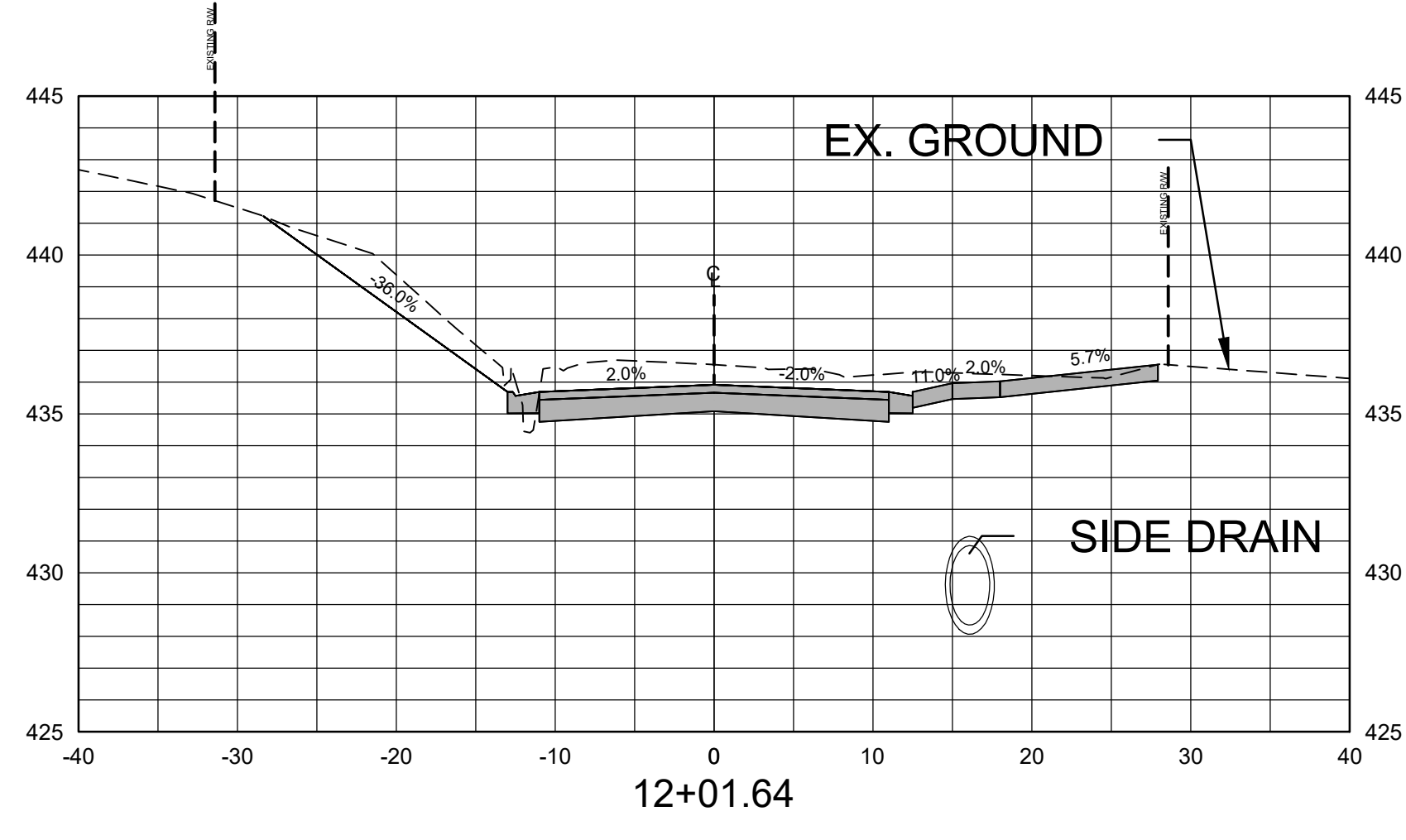
CITY OF LITTLE ROCK, ARKANSAS
 "F" STREET (SPRUCE TO PALM) RECONSTRUCTION
 CROSS SECTION

DEPARTMENT OF PUBLIC WORKS
 CIVIL ENGINEERING
 701 W. MARKHAM
 LITTLE ROCK, ARKANSAS 72201

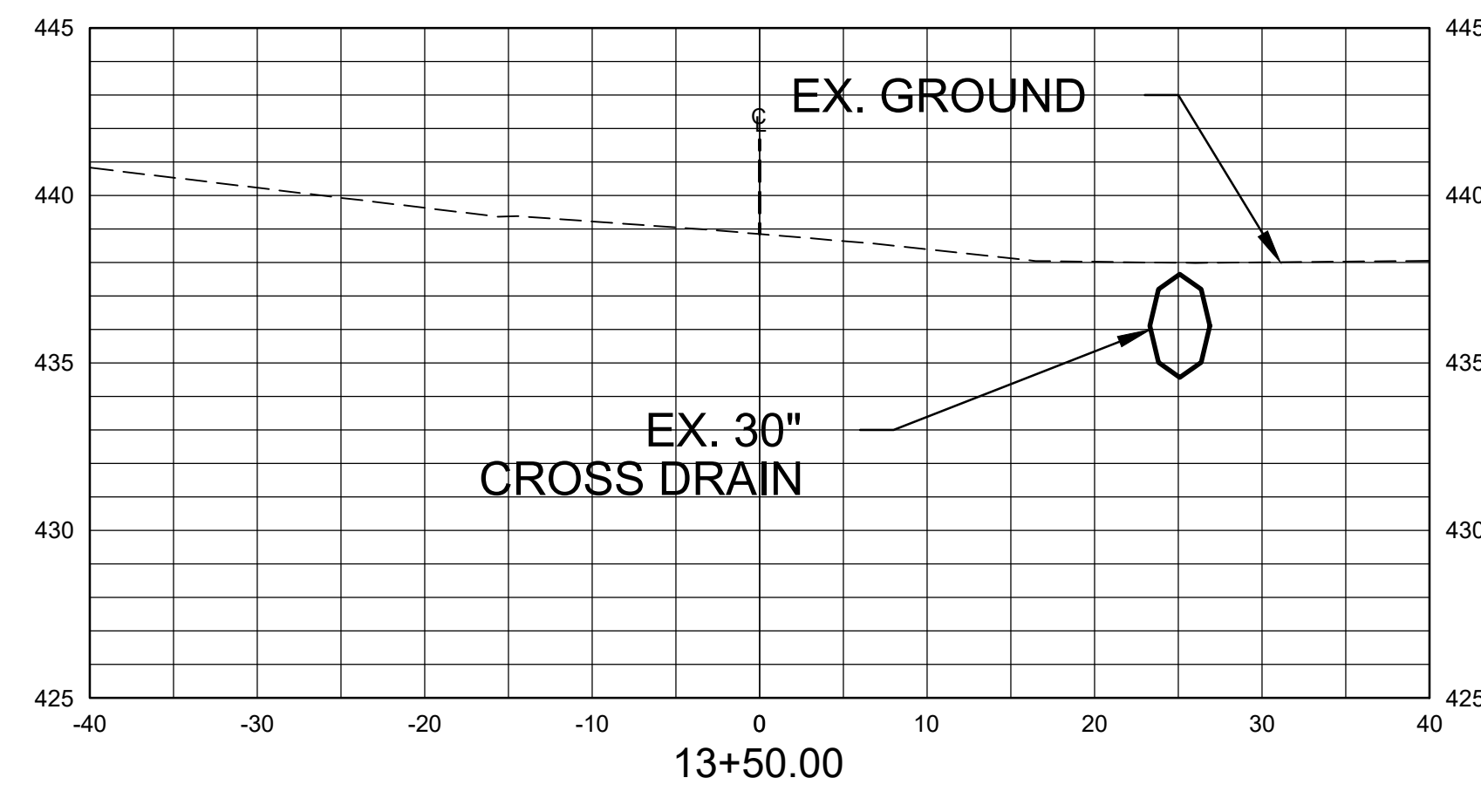
DRAWN BY
 CV
 DESIGNED
 CV
 CHECKED
 JB
 DATE
 6/9/2024
 SCALE
 1" = 10' H, 1" = 5V
 PROJECT NO.
 CLR # 03-18-ST-56
 SHEET NO.
 C7



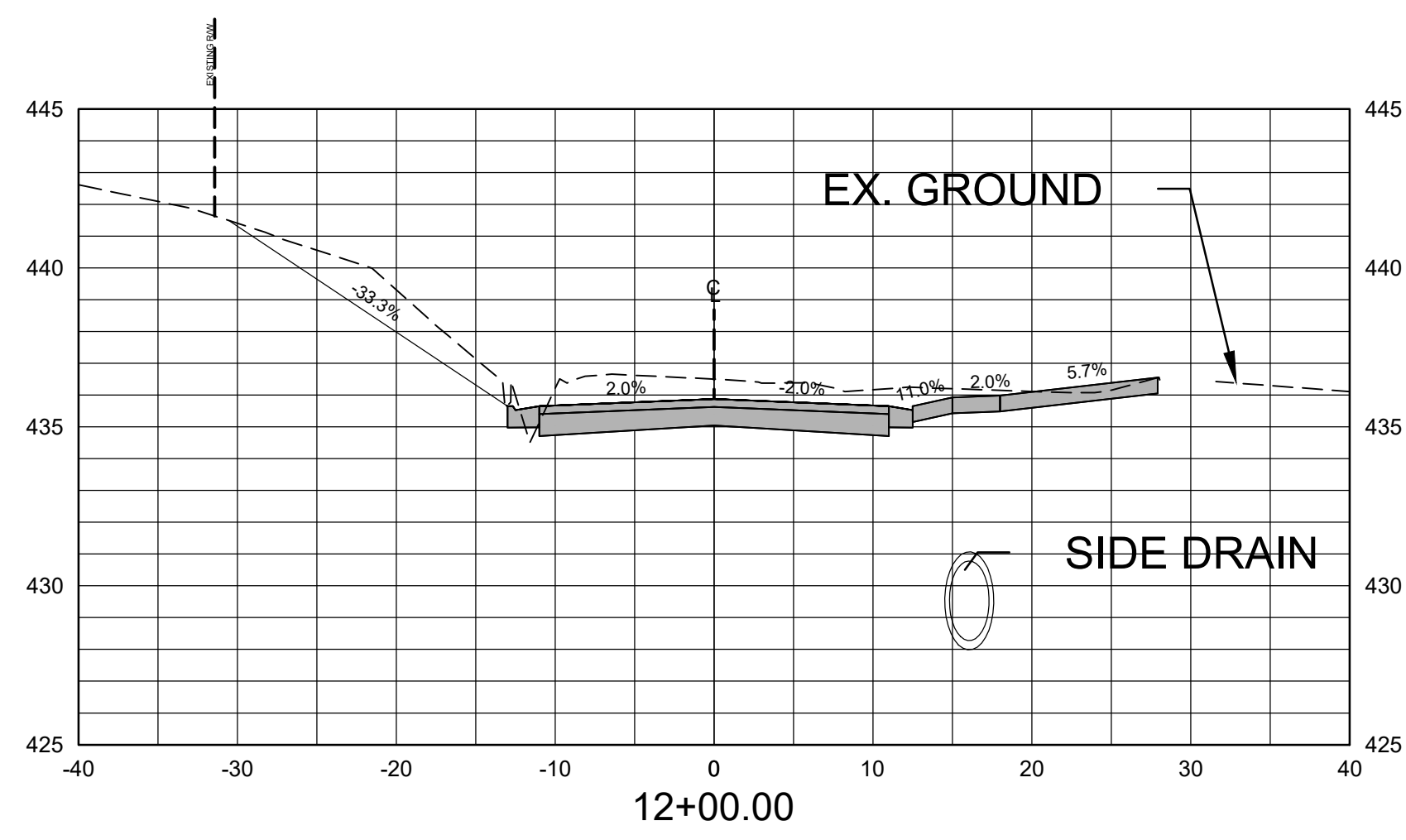
Total Volume at Station 12+50.00	
Cut Area	45.72
Fill Area	9.59
Cut Vol	119.61
Fill Vol	8.98
Cum Cut Vol	403.61
Cum Fill Vol	18.90
Net Vol	384.71



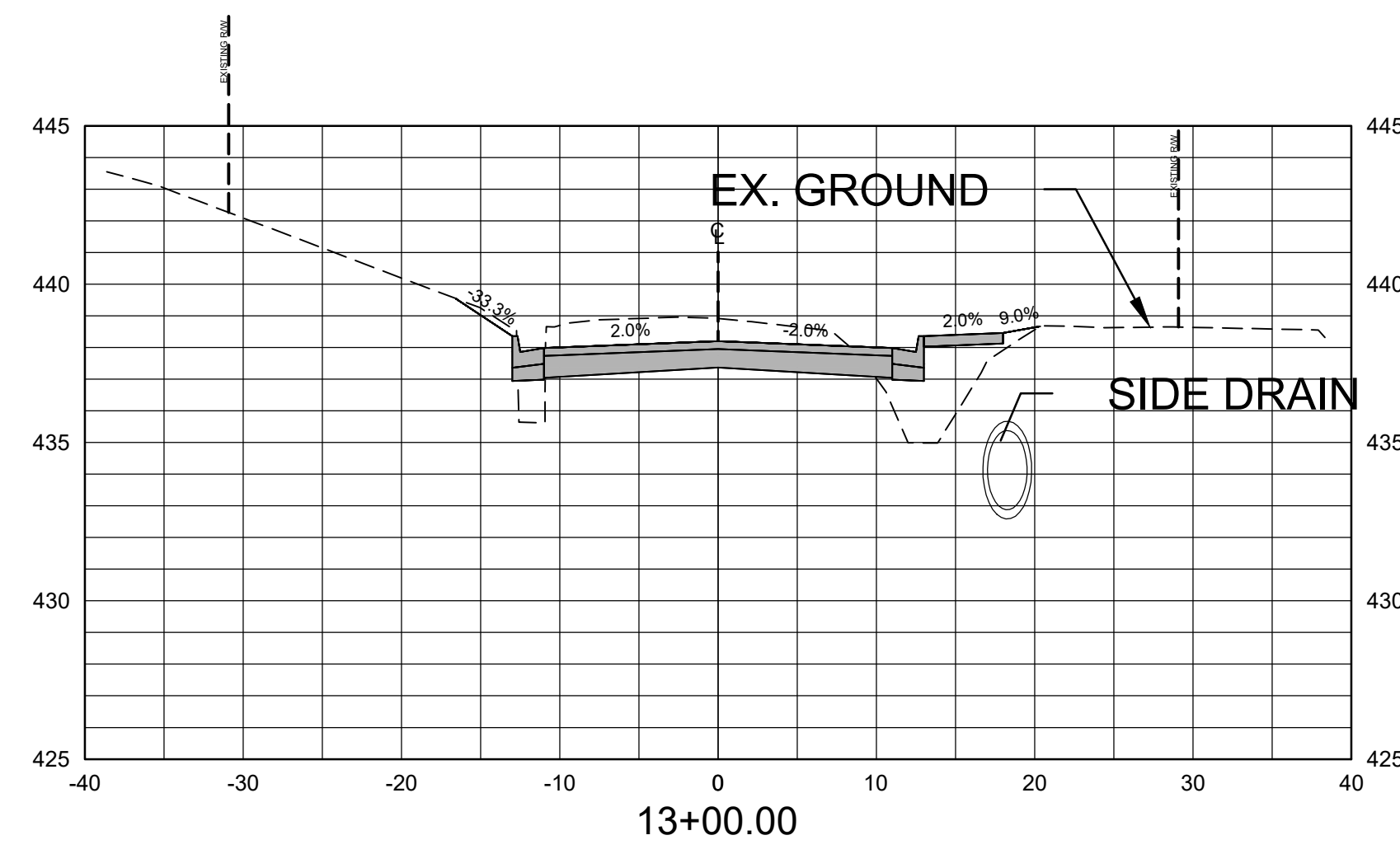
Total Volume at Station 12+01.64	
Cut Area	87.85
Fill Area	0.44
Cut Vol	5.38
Fill Vol	0.02
Cum Cut Vol	284.00
Cum Fill Vol	9.91
Net Vol	274.09



Total Volume at Station 13+50.00	
Cut Area	0.00
Fill Area	0.00
Cut Vol	52.21
Fill Vol	14.19
Cum Cut Vol	550.36
Cum Fill Vol	56.16
Net Vol	494.20



Total Volume at Station 12+00.00	
Cut Area	88.77
Fill Area	0.18
Cut Vol	52.30
Fill Vol	0.26
Cum Cut Vol	278.62
Cum Fill Vol	9.89
Net Vol	268.73



Total Volume at Station 13+00.00	
Cut Area	56.39
Fill Area	15.33
Cut Vol	94.54
Fill Vol	23.07
Cum Cut Vol	498.15
Cum Fill Vol	41.97
Net Vol	456.18

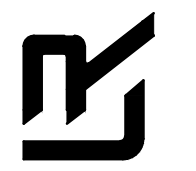
90% PRELIMINARY DESIGN

FOR REVIEW ONLY
 These documents are for Design Review and not intended for construction, Bidding or Permit Purposes. They were prepared by, or under the supervision of:
CHRISTIAN VILLARREAL P.E.# 21648 6/9/2024
 Date

REVISIONS	DATE

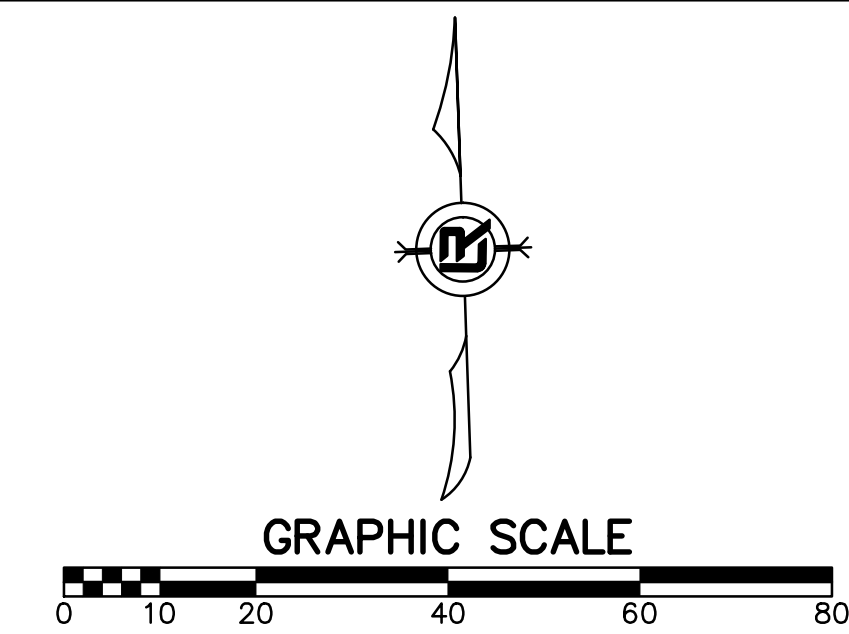
CITY OF LITTLE ROCK, ARKANSAS
"F" STREET (SPRUCE TO PALM) RECONSTRUCTION
 CROSS SECTION

DEPARTMENT OF PUBLIC WORKS
CIVIL ENGINEERING
 701 W. MARKHAM
 LITTLE ROCK, ARKANSAS 72201



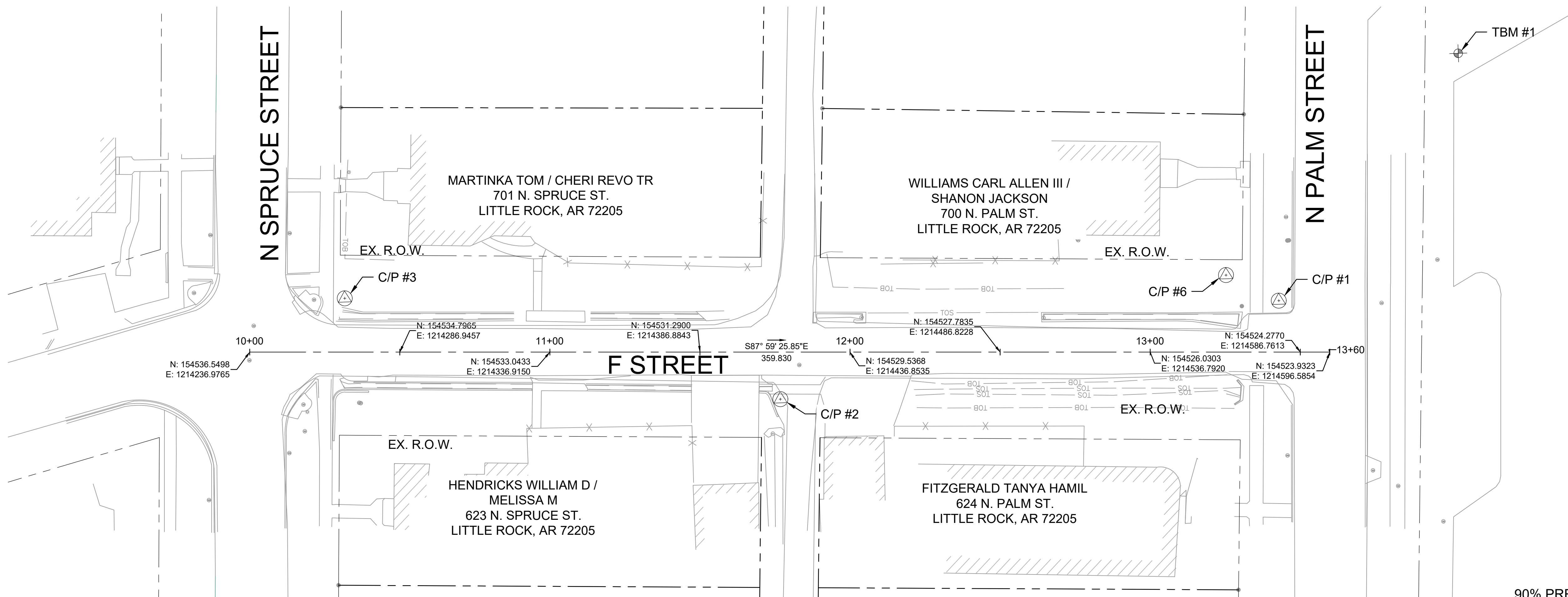
DRAWN BY
CV
DESIGNED
CV
CHECKED
JB
DATE
6/9/2024
SCALE
1" = 10' H, 1" = 5V
PROJECT NO.
CLR # 03-18-ST-56
SHEET NO.
C8

SURVEY CONTROL POINTS LARCH ROAD							
POINT	DESCRIPTION	NORTHING	EASTING	ELEVATION	BASELINE REFERENCE	BASELINE STATION	BASELINE OFFSET
C/P #1	60D NAIL ON THE NORTH SIDE OF "F" STREET	154541.6632	1214580.2110	439.80	F ST.	13+42.85	17.15 LT
C/P #2	PK NAIL ON THE SOUTH SIDE OF "F" STREET	154514.6677	1214413.1152	435.50	F ST.	11+76.80	15.69 RT
C/P #3	60D NAIL ON THE NORTH SIDE OF "F" STREET	154553.3372	1214269.2534	432.08	F ST.	10+31.67	17.91 LT
C/P #6	60D NAIL ON THE NORTH SIDE OF "F" STREET	154550.7794	1214562.9422	441.68	F ST.	13+25.27	25.65 LT
TBM 1	CHISELED SQUARE ON THE NW CORNER OF THE CONCRETE PAD EAST OF THE FENCE ON THE EAST SIDE OF PALM ST.	154621.9354	1214642.8476	446.22	F ST.	N/A	97.99 LT



REVISIONS	DATE

CITY OF LITTLE ROCK, ARKANSAS
 "F" STREET (SPRUCE TO PALM) RECONSTRUCTION
 PROJECT LAYOUT



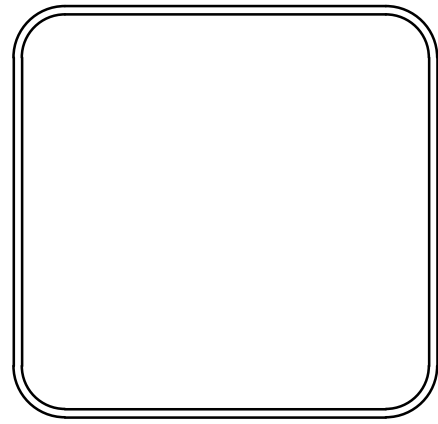
90% PRELIMINARY DESIGN

FOR REVIEW ONLY

These documents are for Design Review and not intended for Construction, Bidding or Permit Purposes. They were prepared by, or under the supervision of:

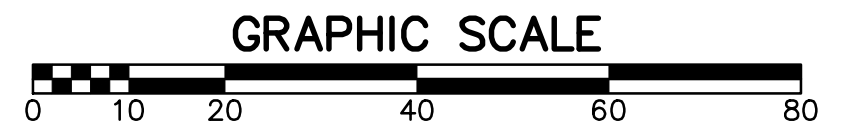
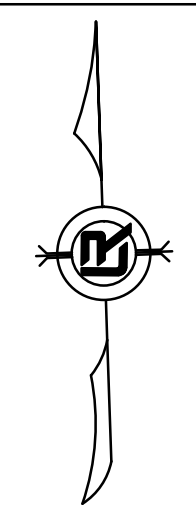
CHRISTIAN VILLARREAL P.E. # 21648 6/9/2024
 Date

DEPARTMENT OF PUBLIC WORKS
 CIVIL ENGINEERING
 701 W. MARKHAM
 LITTLE ROCK, ARKANSAS 72201

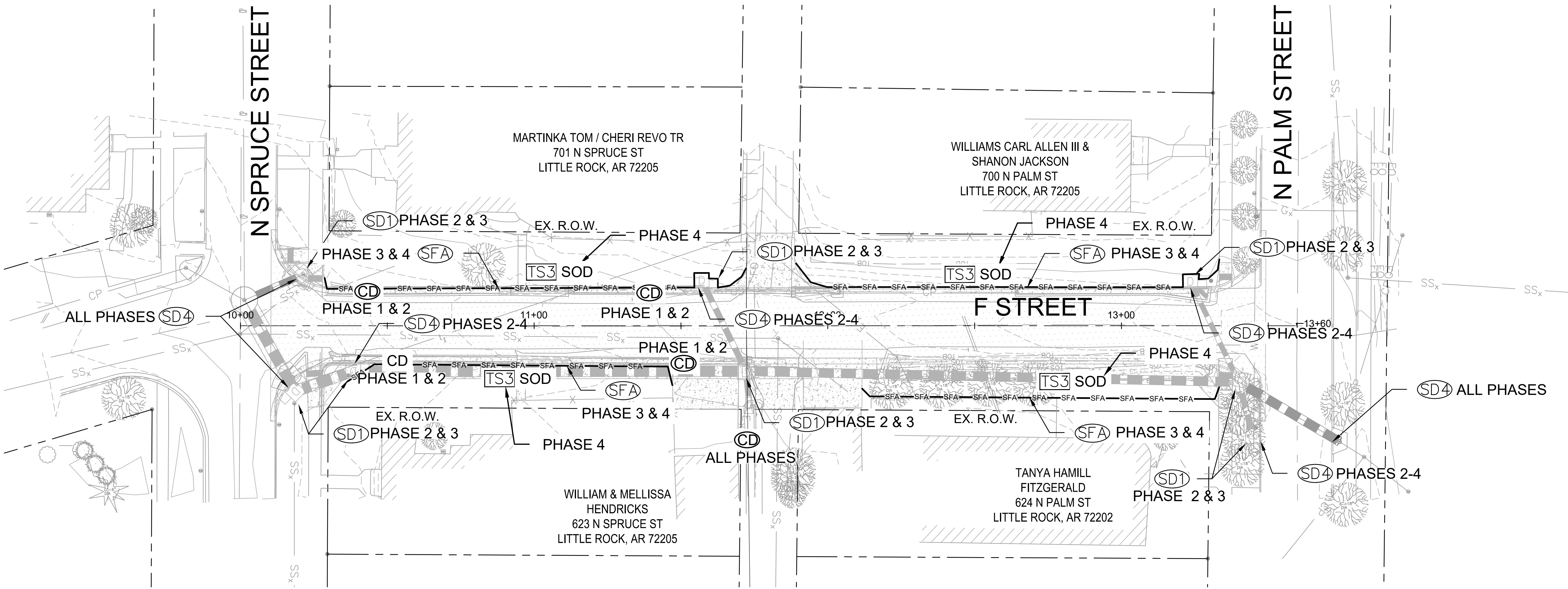


DRAWN BY
 CV
DESIGNED
 CV
CHECKED
 JB
DATE
 6/9/2024
SCALE
 1" = 20'
PROJECT NO.
 CLR # 03-18-ST-56
SHEET NO.
C9

REVISIONS	DATE



PHASING LEGEND
 PHASE 1 (INITIAL STRIP AND DEMOLITION)
 PHASE 2 (NEW DRAINAGE AND COMPACTED EMBANKMENT)
 PHASE 3 (NEW CURB, SIDEWALK, DRIVEWAY APRONS, ALLEY TURNOUTS AND FINAL GRADING)
 PHASE 4 (ASPHALT AND RESTORE DISTURBED AREAS WITH SOD)

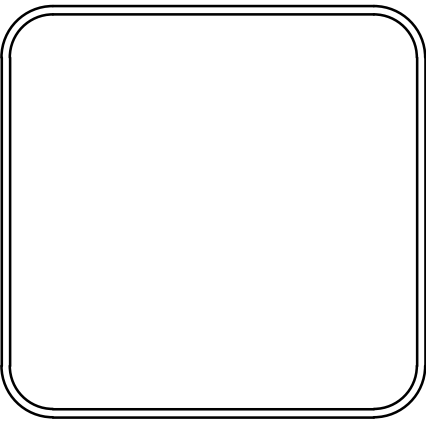


90% PRELIMINARY DESIGN

FOR REVIEW ONLY
 These documents are for Design Review and not intended for Construction, Bidding or Permit Purposes. They were prepared by, or under the supervision of:
 CHRISTIAN VILLARREAL P.E.# 21648 6/9/2024
 Date

CITY OF LITTLE ROCK, ARKANSAS
 "F" STREET (SPRUCE TO PALM) RECONSTRUCTION
 EROSION CONTROL

DEPARTMENT OF PUBLIC WORKS
 CIVIL ENGINEERING
 701 W. MARKHAM
 LITTLE ROCK, ARKANSAS 72201



DRAWN BY
 CV
 DESIGNED
 CV
 CHECKED
 JB
 DATE
 6/9/2024
 SCALE
 1" = 20'
 PROJECT NO.
 CLR # 03-18-ST-56
 SHEET NO.
C10