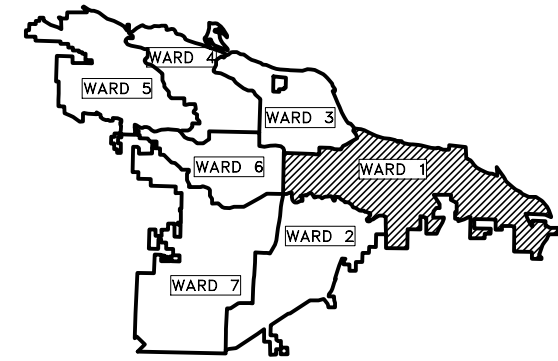


CLR PROJECT #01-22-ST-99

13TH STREET

LITTLE ROCK, ARKANSAS

W. 13TH STREET (FAIR PARK BLVD. TO S. FILLMORE ST.)

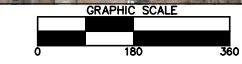
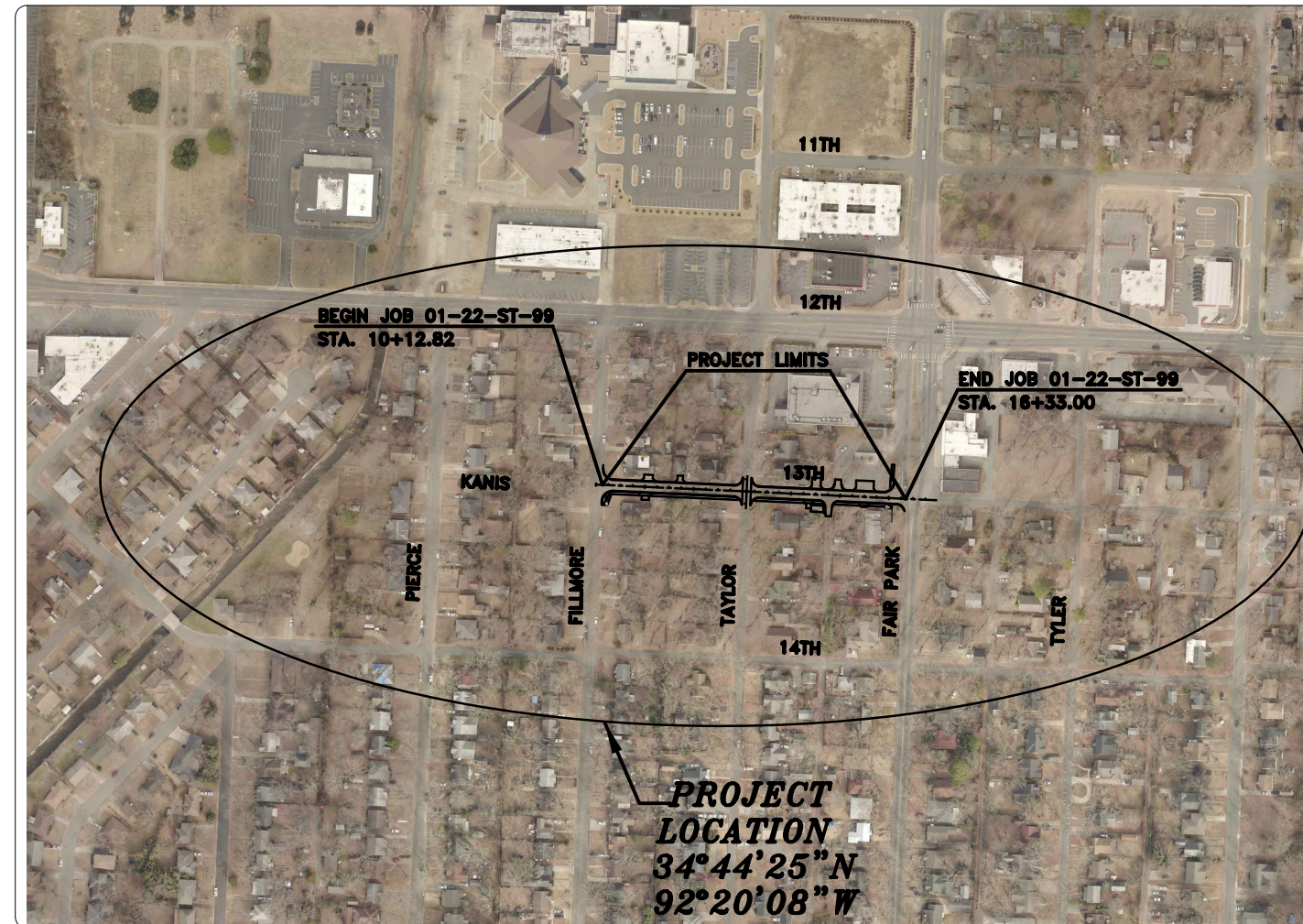


PROJECT LOCATION - WARD 1

REVISIONS	DATE

CITY OF LITTLE ROCK, ARKANSAS
13TH STREET
COVER SHEET

SHEET NO.	TITLE
C-01	TITLE SHEET
C-02	LEGEND, NOTES, AND QUANTITIES
C-03	TYPICAL SECTION SHEET
C-04 - C-05	TEMPORARY EROSION CONTROL SHEETS
C-06 - C-07	MAINTENANCE OF TRAFFIC SHEETS
C-08 - C-09	FIELD TIES / LAYOUT SHEETS
C-10 - C-11	PLAN AND PROFILE 13TH STREET SHEETS
C-12 - C-14	DRIVEWAY DETAIL SHEETS
C-15 - C-19	CROSS SECTIONS 13TH STREET



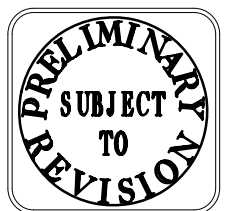
DEPARTMENT OF PUBLIC WORKS
CIVIL ENGINEERING
701 WEST MARKHAM STREET
LITTLE ROCK, ARKANSAS 72201



JACOBS™

Jacobs Engineering Group, Inc.
10816 Executive Center Dr., Suite 300
Little Rock, Arkansas 72211
Phone: 501.223.0515 Fax: 501.223.2470
www.jacobs.com

DEPARTMENT OF PUBLIC WORKS
CIVIL ENGINEERING
701 W. MARKHAM
LITTLE ROCK, ARKANSAS 72201



DRAWN BY	RFR
DESIGNED	RFR
CHECKED	BAP
DATE	03 / 20 / 24
SCALE	NTS
PROJECT NO.	01-22-ST-99
SHEET NO.	C-01

SUMMARY OF QUANTITIES


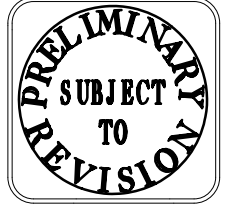
ITEM NUMBER	ITEM	QUANTITY	UNIT
2.03	SITE PREPARATION	1.00	LUMP SUM
3.01	UNCLASSIFIED EXCAVATION	296	CU. YD.
3.07	COMPACTED EMBANKMENT	89	CU. YD.
4.01	AGGREGATE BASE COURSE (CLASS 7)	172	TON
5.01	TACK COAT	212	GAL.
6.01	ASPHALT CONCRETE (HOT MIX, SURFACE COURSE)	275	TON
7.04	CONCRETE DRIVEWAYS (4" THICK, PRIVATE PROPERTY)	404.78	SQ. YD.
8.01	CONCRETE CURB AND GUTTER	1263	LIN. FT.
9.01	CONCRETE SIDEWALK	255	SQ. YD.
14.01	SOLID SODDING	433	SQ. YD.
16.01	MAINTENANCE OF TRAFFIC	1.00	LUMP SUM
18.02	MANHOLE RINGS AND COVERTS ADJUSTED TO GRADE	1	EACH
18.04	REPLACEMENT OF FENCES	343	LIN. FT.
18.09	ACCESS RAMPS	558	SQ. FT.
18.10	WATER FOR DUST CONTROL	100	GAL.
19.03	CLEANUP	1.00	LUMP SUM
24.01	MULCH COVER	0.50	ACRE
24.02	WATER	15.7	M. GAL.
24.03	TEMPORARY SEEDING	0.50	ACRE
24.04	SILT FENCE	725	LIN. FT.
24.05	TEMPORARY FENCING FOR TREE PROTECTION	204	LIN. FT.
24.06	SEDIMENT REMOVAL AND DISPOSAL	27	CU. YD.
27.01	COLD MILLING ASPHALT PAVEMENT	1342	SQ. YD.

EXISTING	PROPOSED
IRON ROD	PROPOSED CONTOUR
PK NAIL	PROPOSED SPOT ELEVATION
R.R. SPIKE	PROPOSED SPOT CURB ELEVATION
CONC. MONUMENT	STORM SEWER - PIPE
WATER VALVE	STORM SEWER - MITERED END SECTION
WATER METER	STORM SEWER - GRATE INLET
FIRE HYDRANT	STORM SEWER - JUNCTION BOX
GAS VALVE	STORM SEWER - FLARED END SECTION
CLEAN-OUT	STORM SEWER - HEADWALL
GUARD POST (BOLLARD)	STORM SEWER - SINGLE WING
SIGN POST	STORM SEWER - DOUBLE WING
BENCHMARK	STORM SEWER - AREA INLET
STORM SEWER MANHOLE	GRADE BREAK LINE
SANITARY SEWER MANHOLE	HIGH POINT
TELEPHONE MANHOLE	LOW POINT
ELECTRIC MANHOLE	CUT LINE
TELEPHONE BOX	FILL LINE
ELECTRIC BOX	SANITARY SEWER PIPE
CABLE BOX	SANITARY SEWER MANHOLE
UTILITY POLE	PROPOSED CURB
GUY WIRE	PROPOSED CONCRETE
LIGHT POLE	CONSTRUCTION - ENTRANCE/EXIT
POST OR POLE (TYPE AS NOTED)	CHECK DAM
MAILBOX	DIVERSION BERM
DECIDUOUS TREE	DOWNDRAIN STRUCTURE - TEMPORARY
EVERGREEN/CONIFEROUS TREE	ROCK DAM
BUSH	SEDIMENT BARRIER - SILT FENCE
PROPERTY LINE	SEDIMENT BARRIER - GRAVEL RING
SETBACK LINE	SEDIMENT BARRIER - BLOCK & GRAVEL
EASEMENT LINE	SEDIMENT BARRIER - BLOCK
CURB	TEMPORARY SEDIMENT BASIN
FENCE	SILT FENCE - TYPE A
OVERHEAD ELECTRIC	SILT FENCE - TYPE B
OVERHEAD TELEPHONE	SILT FENCE - TYPE C
OVERHEAD CABLE	STORM DRAIN OUTLET PROTECTION
UNDERGROUND TELEPHONE	SURFACE ROUGHENING
UNDERGROUND ELECTRIC	DISTURBED AREA STABILIZATION -TEMPORARY STABILIZATION
UNDERGROUND CABLE	DISTURBED AREA STABILIZATION -TEMPORARY GRASSING
WATER LINE	DISTURBED AREA STABILIZATION -PERMANENT GRASSING
SEWER LINE	MATTING/BLANKETS
GAS LINE	
STORM SEWER/CULVERT	
EDGE OF WOODS	
CONTOUR LINE	

REVISIONS	DATE

CITY OF LITTLE ROCK, ARKANSAS
13TH STREET
LEGEND AND QUANTITIES


DEPARTMENT OF PUBLIC WORKS
CIVIL ENGINEERING
701 W. MARKHAM
LITTLE ROCK, ARKANSAS 72201

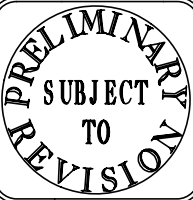



DRAWN BY	RFR
DESIGNED	RFR
CHECKED	BAP
DATE	03 / 20 / 24
SCALE	NTS
PROJECT NO.	01-22-ST-99
SHEET NO.	C-02

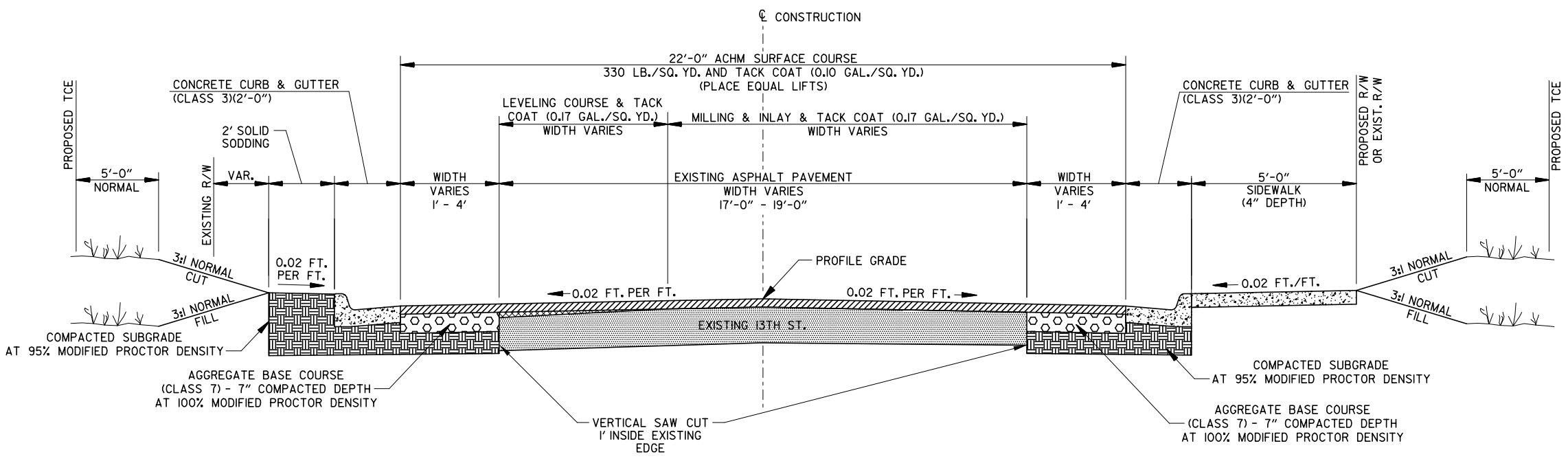
REVISIONS	DATE

CITY OF LITTLE ROCK, ARKANSAS
13TH STREET
TYPICAL SECTION


 DEPARTMENT OF PUBLIC WORKS
 CIVIL ENGINEERING
 701 W. MARKHAM
 LITTLE ROCK, ARKANSAS 72201



DRAWN BY RFR
DESIGNED RFR
CHECKED BAP
DATE 03 / 20 / 24
SCALE NTS
PROJECT NO. 01-22-ST-99
SHEET NO. C-03




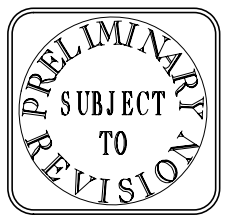
NOTE:
 1) REFER TO PW-22, PW-23, PW-29, PW-41, & PW-42 OF THE STANDARD DETAILS FOR ADDITIONAL INFORMATION.
 2) REFER TO PLAN SHEETS AND CROSS SECTION FOR DEVIATIONS.

T:\Job\CLR - 13th Street - 13th Street - 13th Street - 13th Street - Typical Section.dgn
 ...13th Street - Typical Section.dgn
 3/14/2024 11:57:55 AM

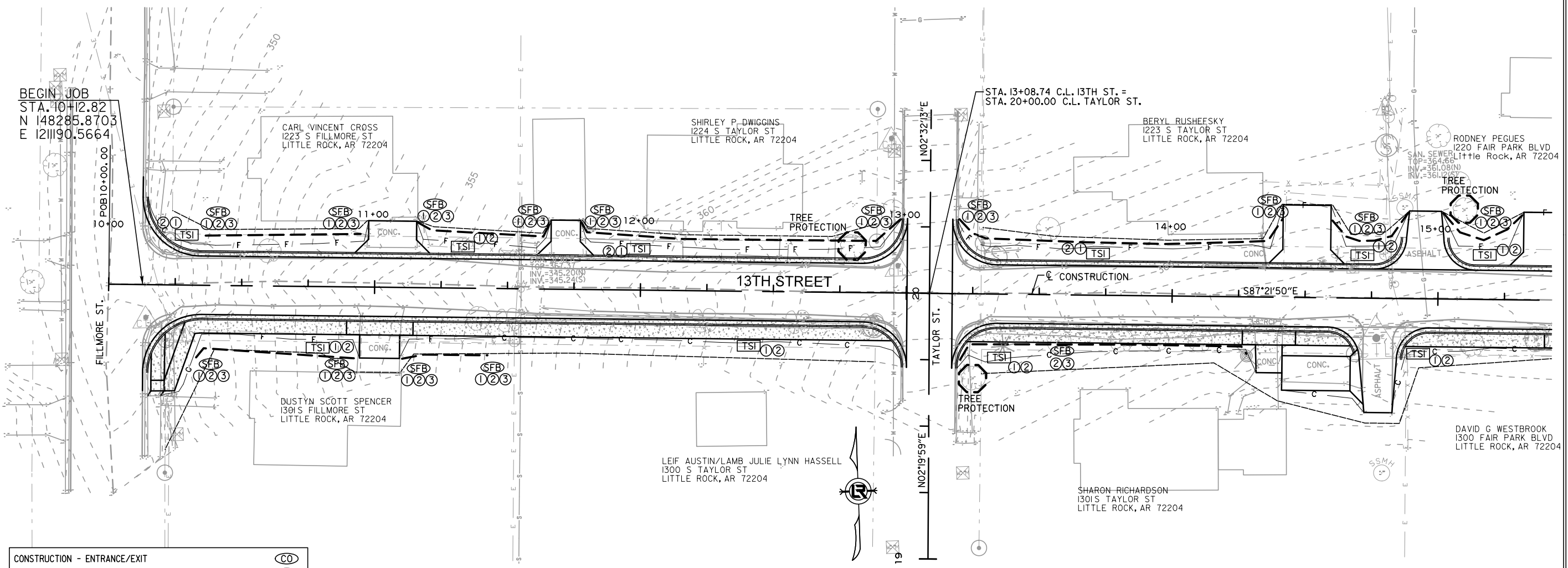
REVISIONS	DATE

CITY OF LITTLE ROCK, ARKANSAS
13TH STREET
TEMPORARY EROSION CONTROL PLAN
13TH STREET SHEET 1


 DEPARTMENT OF PUBLIC WORKS
 CIVIL ENGINEERING
 701 W. MARKHAM
 LITTLE ROCK, ARKANSAS 72201

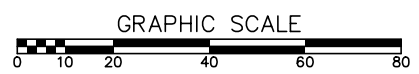

 PRELIMINARY
 SUBJECT
 TO
 REVISION

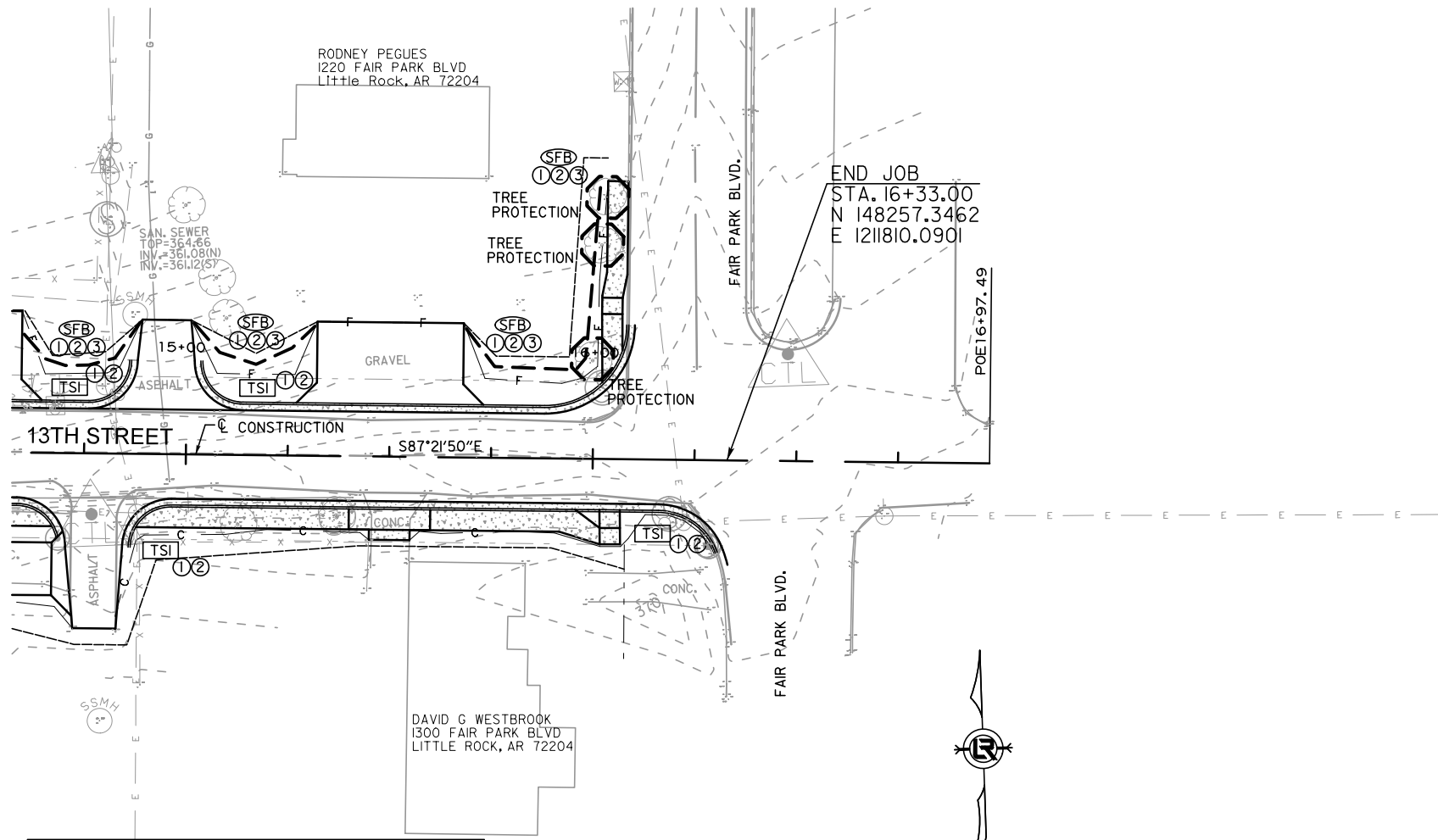
DRAWN BY
 RFR
 DESIGNED
 RFR
 CHECKED
 BAP
 DATE
 03 / 20 / 24
 SCALE
 1" =
 PROJECT NO.
 01-22-ST-99
 SHEET NO.
C-04



CONSTRUCTION - ENTRANCE/EXIT	(CO)
CHECK DAM	(CD)
DIVERSION BERM	(DI)
DOWNDRAIN STRUCTURE - TEMPORARY	(DN)
ROCK DAM	(RD)
SEDIMENT BARRIER - SILT FENCE	(SD1)
SEDIMENT BARRIER - GRAVEL RING	(SD2)
SEDIMENT BARRIER - BLOCK & GRAVEL	(SD3)
SEDIMENT BARRIER - BLOCK	(SD4)
TEMPORARY SEDIMENT BASIN	(SBI)
SILT FENCE - TYPE A	(SFA)
SILT FENCE - TYPE B	(SFB)
SILT FENCE - TYPE C	(SFC)
STORM DRAIN OUTLET PROTECTION	(ST)
SURFACE ROUGHENING	(SU)
DISTURBED AREA STABILIZATION - TEMPORARY STABILIZATION	(TS1)
DISTURBED AREA STABILIZATION - TEMPORARY GRASSING	(TS2)
DISTURBED AREA STABILIZATION - PERMANENT GRASSING	(TS3)
MATTING/BLANKETS	(Mb)

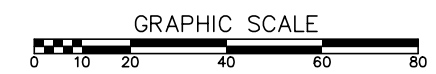
PHASING LEGEND
 ① PHASE 1 (INITIAL STRIP AND DEMOLITION)
 ② PHASE 2 (NEW DRAINAGE AND BASE COURSE IN PLACE)
 ③ PHASE 3 (PAVED, SOLID SODDING NOT YET INSTALLED)





CONSTRUCTION - ENTRANCE/EXIT	(CO)
CHECK DAM	(CD)
DIVERSION BERM	(DI)
DOWNDRAIN STRUCTURE - TEMPORARY	(DN)
ROCK DAM	(RD)
SEDIMENT BARRIER - SILT FENCE	(SD1)
SEDIMENT BARRIER - GRAVEL RING	(SD2)
SEDIMENT BARRIER - BLOCK & GRAVEL	(SD3)
SEDIMENT BARRIER - BLOCK	(SD4)
TEMPORARY SEDIMENT BASIN	(SBI)
SILT FENCE - TYPE A	(SFA)
SILT FENCE - TYPE B	(SFB)
SILT FENCE - TYPE C	(SFC)
STORM DRAIN OUTLET PROTECTION	(ST)
SURFACE ROUGHENING	(SU)
DISTURBED AREA STABILIZATION - TEMPORARY STABILIZATION	(TS1)
DISTURBED AREA STABILIZATION - TEMPORARY GRASSING	(TS2)
DISTURBED AREA STABILIZATION - PERMANENT GRASSING	(TS3)
MATTING/BLANKETS	(MB)

PHASING LEGEND
 ① PHASE 1 (INITIAL STRIP AND DEMOLITION)
 ② PHASE 2 (NEW DRAINAGE AND BASE COURSE IN PLACE)
 ③ PHASE 3 (PAVED, SOLID SODDING NOT YET INSTALLED)



REVISIONS	DATE

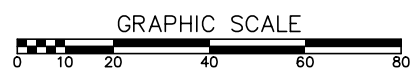
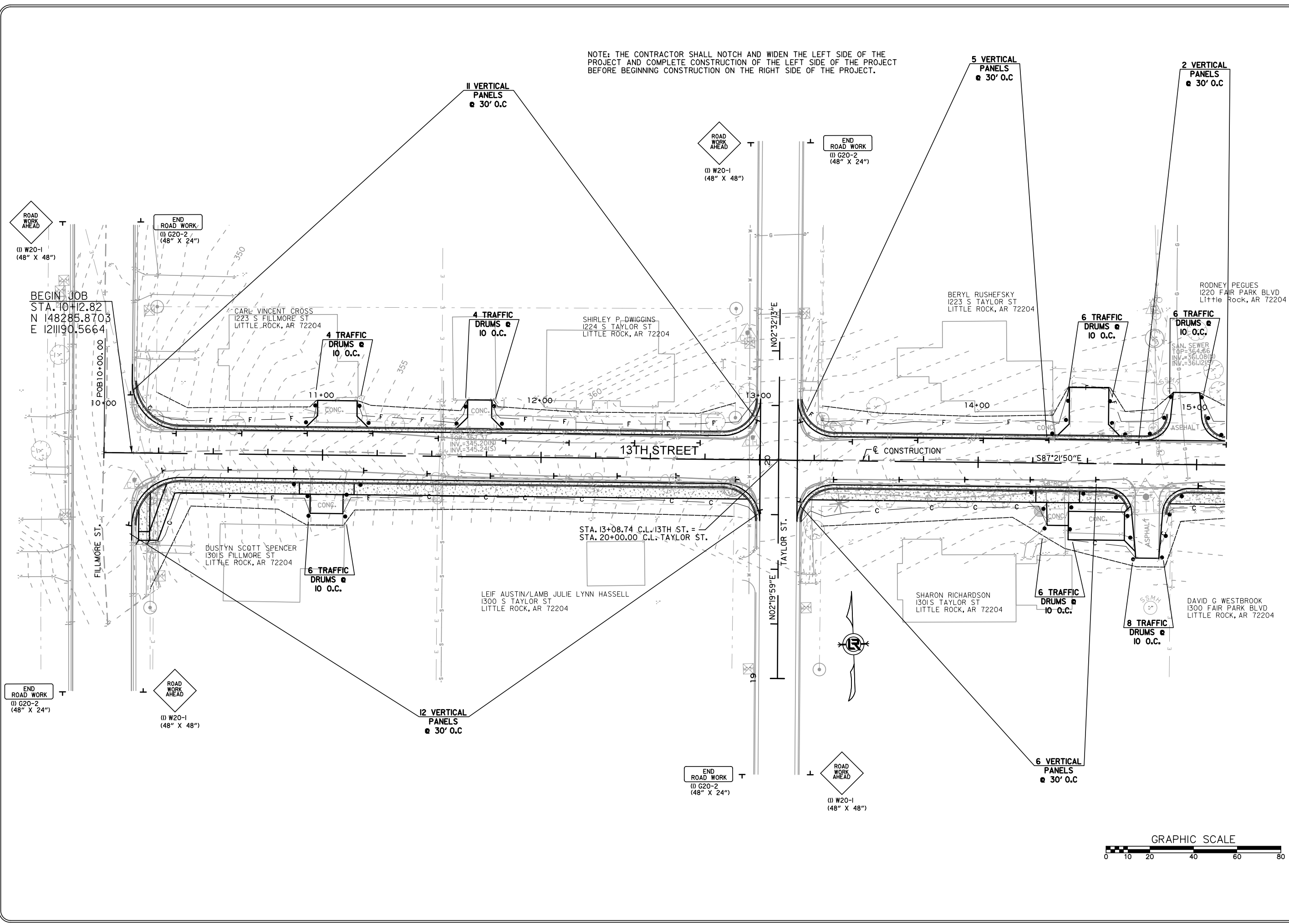
CITY OF LITTLE ROCK, ARKANSAS
 13TH STREET
 TEMPORARY EROSION CONTROL PLAN
 13TH STREET SHEET 2

DEPARTMENT OF PUBLIC WORKS
 CIVIL ENGINEERING
 701 W. MARKHAM
 LITTLE ROCK, ARKANSAS 72201

PRELIMINARY
 SUBJECT
 TO
 REVISION

DRAWN BY	RFR
DESIGNED	RFR
CHECKED	BAP
DATE	03 / 20 / 24
SCALE	1" =
PROJECT NO.	01-22-ST-99
SHEET NO.	C-05

NOTE: THE CONTRACTOR SHALL NOTCH AND WIDEN THE LEFT SIDE OF THE PROJECT AND COMPLETE CONSTRUCTION OF THE LEFT SIDE OF THE PROJECT BEFORE BEGINNING CONSTRUCTION ON THE RIGHT SIDE OF THE PROJECT.



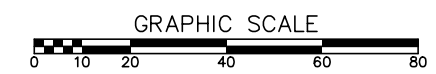
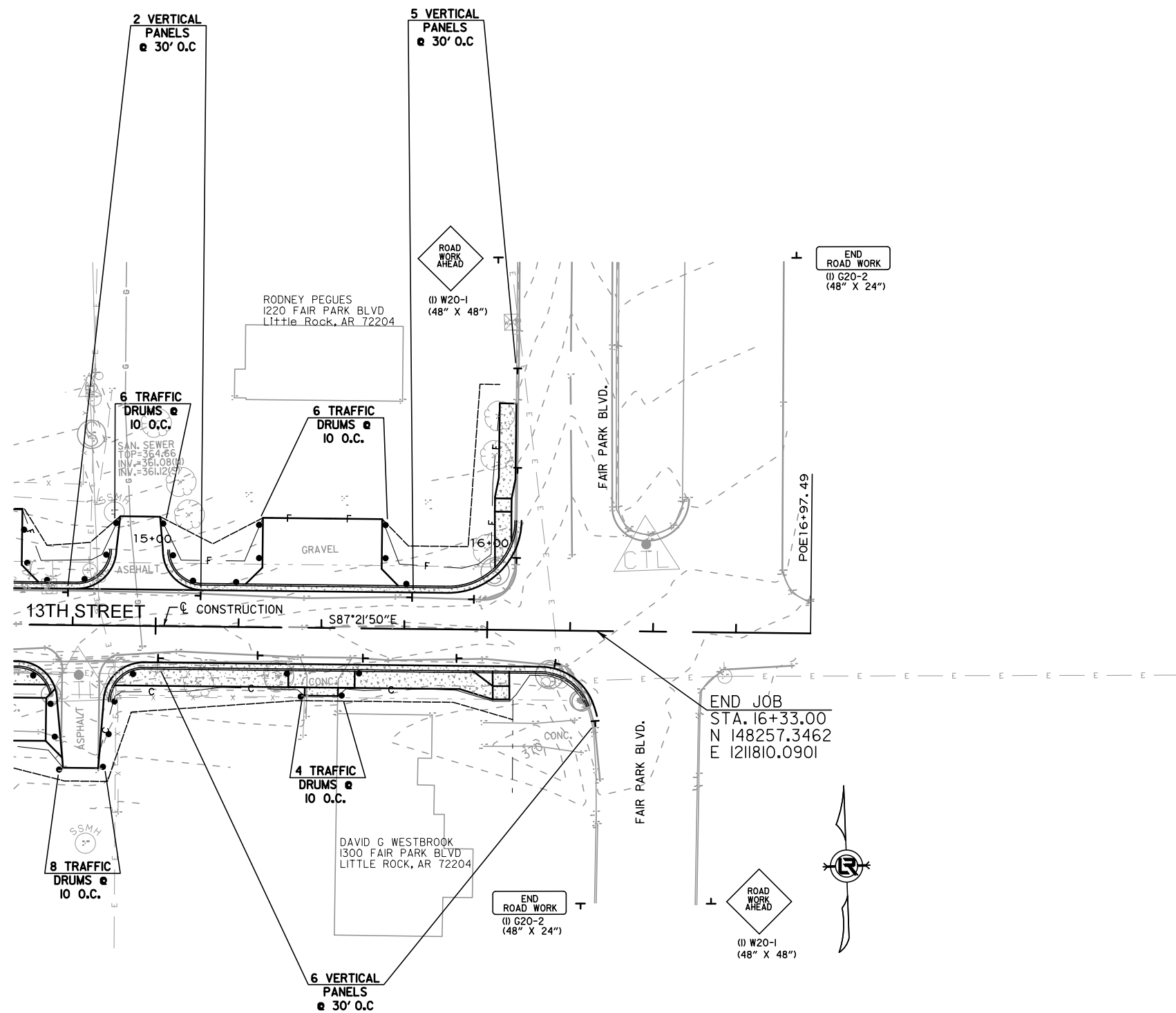
REVISIONS	DATE

CITY OF LITTLE ROCK, ARKANSAS
13TH STREET
MAINTENANCE OF TRAFFIC PLAN
13TH STREET SHEET 1

DEPARTMENT OF PUBLIC WORKS
CIVIL ENGINEERING
701 W. MARKHAM
LITTLE ROCK, ARKANSAS 72201

PRELIMINARY
SUBJECT
TO
REVISION

DRAWN BY
RFR
DESIGNED
RFR
CHECKED
BAP
DATE
03 / 20 / 24
SCALE
1" =
PROJECT NO.
01-22-ST-99
SHEET NO.
C-06



REVISIONS	DATE

CITY OF LITTLE ROCK, ARKANSAS
13TH STREET
MAINTENANCE OF TRAFFIC PLAN
13TH STREET SHEET 2

DEPARTMENT OF PUBLIC WORKS
CIVIL ENGINEERING
701 W. MARKHAM
LITTLE ROCK, ARKANSAS 72201

PRELIMINARY
SUBJECT
TO
REVISION

DRAWN BY
RFR
DESIGNED
RFR
CHECKED
BAP
DATE
03 / 20 / 24
SCALE
1" =
PROJECT NO.
01-22-ST-99
SHEET NO.
C-07

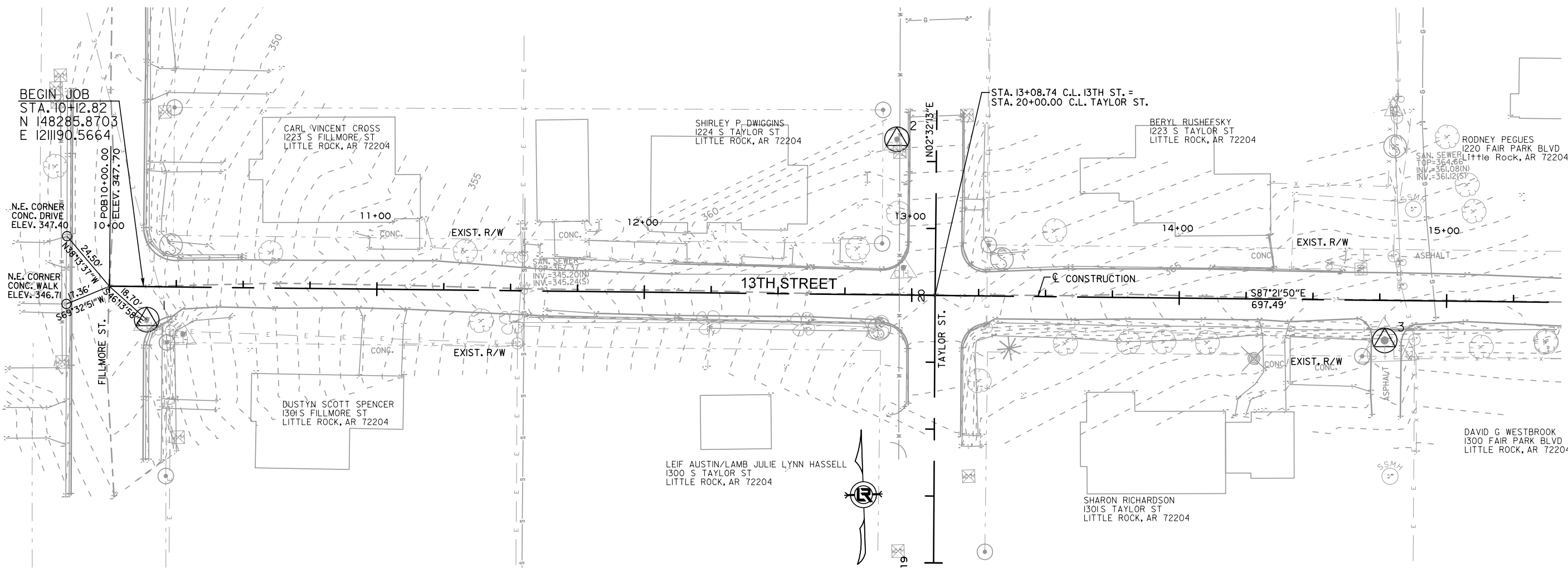
REVISIONS	DATE

CITY OF LITTLE ROCK, ARKANSAS
13TH STREET
FIELD TIES / LAYOUT SHEET
13TH STREET SHEET 1

DEPARTMENT OF PUBLIC WORKS
CIVIL ENGINEERING
701 W. MARKHAM
LITTLE ROCK, ARKANSAS 72201

PRELIMINARY
SUBJECT
TO
REVISION

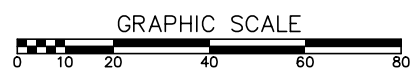
DRAWN BY
RFR
DESIGNED
RFR
CHECKED
BAP
DATE
03 / 20 / 24
SCALE
1" =
PROJECT NO.
01-22-ST-99
SHEET NO.
C - 08

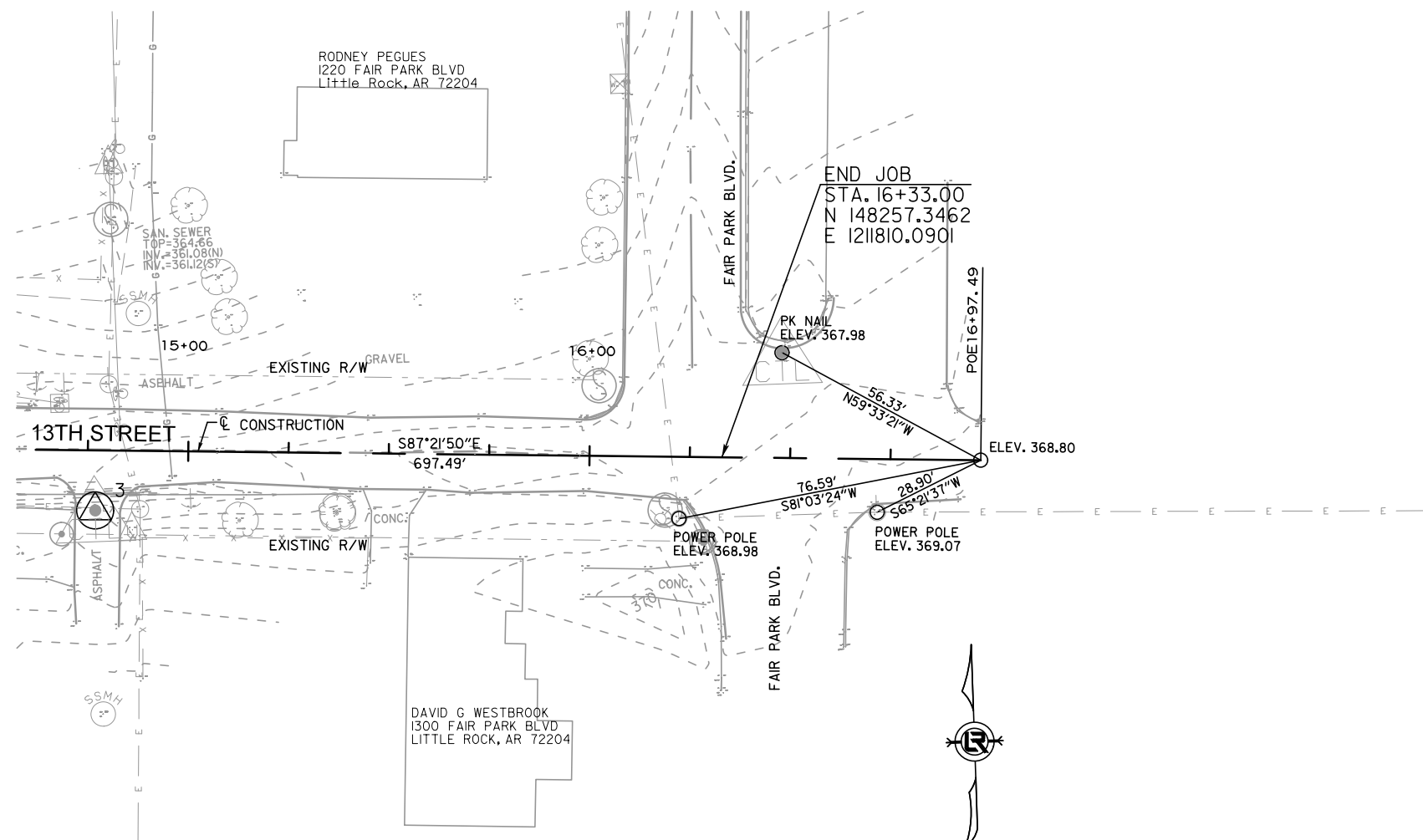


C.L. 13TH ST. COORDINATES			
STATION	TYPE	NORTHING	EASTING
10+00.00	P.O.B.	148286.4600	1211177.7600
16+97.49	P.O.E.	148254.3801	1211874.5111

SURVEY BENCHMARKS				
NO.	DESCRIPTION	NORTHING	EASTING	ELEVATION
1	PK NAIL	148273.5220	1211191.2670	347.460
2	60D NAIL	148331.0850	1211473.9510	360.160
3	PK NAIL	148249.5660	1211653.5620	367.700

- CONTROL POINT
- REFERENCE POINT

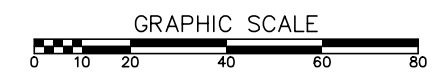




C.L. 13TH ST. COORDINATES			
STATION	TYPE	NORTHING	EASTING
10+00.00	P.O.B.	148286.4600	1211177.7600
16+97.49	P.O.E.	148254.3801	1211874.5111

SURVEY BENCHMARKS				
NO.	DESCRIPTION	NORTHING	EASTING	ELEVATION
3	PK NAIL	148249.5660	1211653.5620	367.700

- CONTROL POINT
- REFERENCE POINT



REVISIONS	DATE

CITY OF LITTLE ROCK, ARKANSAS
 13TH STREET
 FIELD TIES / LAYOUT SHEET
 13TH STREET SHEET 2

DEPARTMENT OF PUBLIC WORKS
 CIVIL ENGINEERING
 701 W. MARKHAM
 LITTLE ROCK, ARKANSAS 72201

PRELIMINARY
 SUBJECT
 TO
 REVISION

DRAWN BY
 RFR
 DESIGNED
 RFR
 CHECKED
 BAP
 DATE
 03 / 20 / 24
 SCALE
 1" =
 PROJECT NO.
 01-22-ST-99
 SHEET NO.
C-09

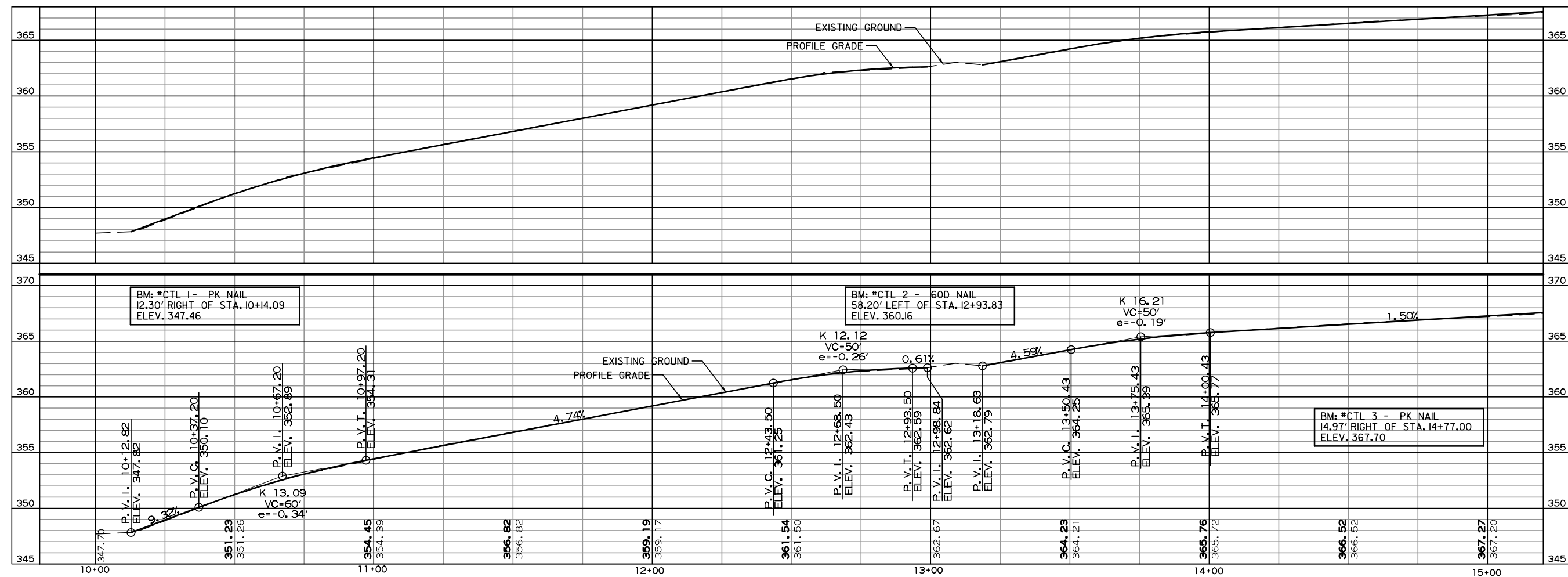
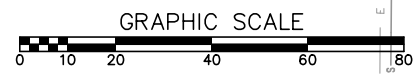
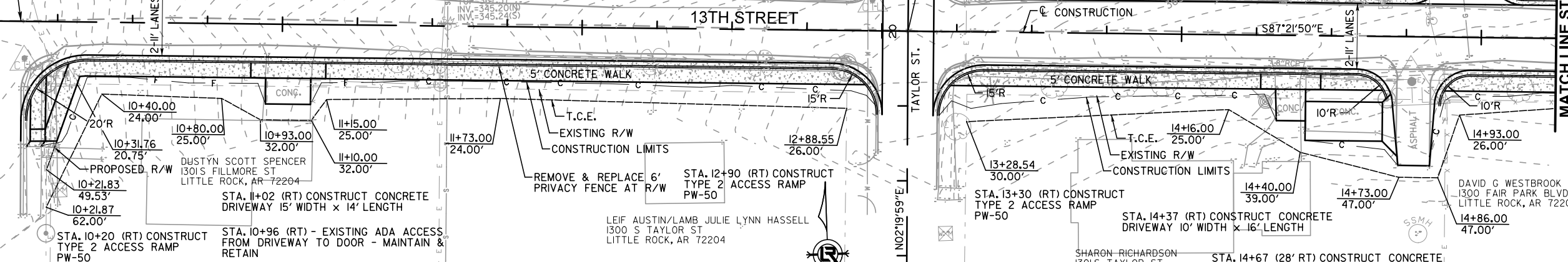
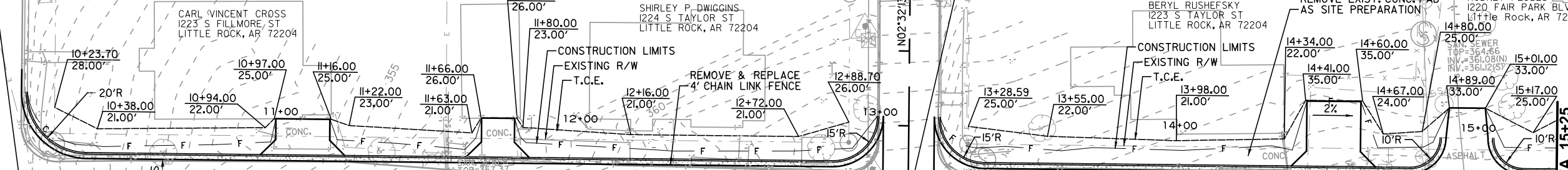
BEGIN JOB
 STA. 10+12.82
 N 148285.8703
 E 121190.5664

STA. 11+07 (LT) CONSTRUCT CONCRETE DRIVEWAY 18' WIDTH x 12' LENGTH

STA. 11+72 (LT) CONSTRUCT CONCRETE DRIVEWAY 11' WIDTH x 13' LENGTH

STA. 13+08.74 C.L. 13TH ST. = STA. 20+00.00 C.L. TAYLOR ST.

STA. 14+95 (LT) CONSTRUCT ASPHALT ALLEY 14' WIDTH x 20' LENGTH



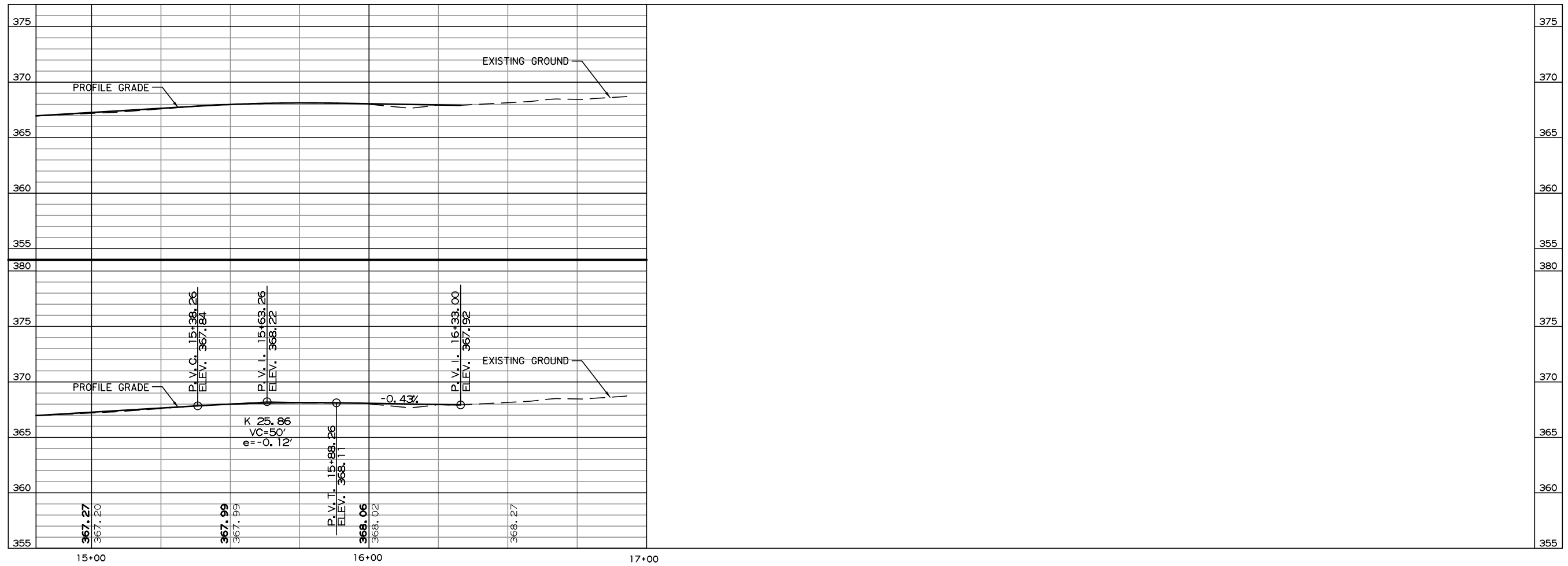
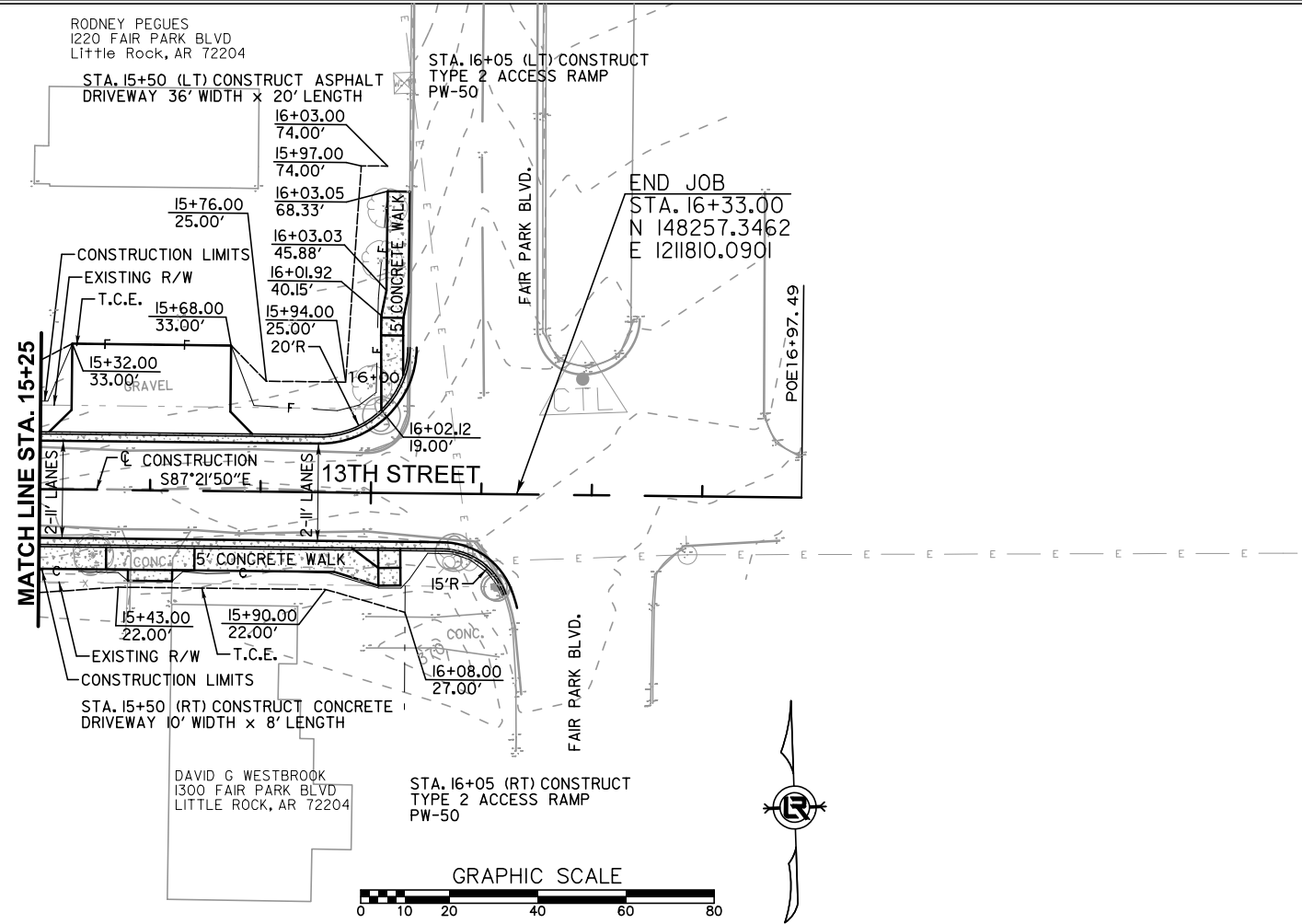
REVISIONS	DATE

CITY OF LITTLE ROCK, ARKANSAS
 13TH STREET
 PLAN & PROFILE
 13TH STREET SHEET 1

DEPARTMENT OF PUBLIC WORKS
 CIVIL ENGINEERING
 701 W. MARKHAM
 LITTLE ROCK, ARKANSAS 72201

PRELIMINARY
 SUBJECT
 TO
 REVISION



DRAWN BY
 RFR
 DESIGNED
 RFR
 CHECKED
 BAP
 DATE
 03 / 20 / 24
 SCALE
 1" = 40'
 PROJECT NO.
 01-22-ST-99
 SHEET NO.
 C-10



REVISIONS	DATE

CITY OF LITTLE ROCK, ARKANSAS
 13TH STREET
 PLAN & PROFILE
 13TH STREET SHEET 2

DEPARTMENT OF PUBLIC WORKS
 CIVIL ENGINEERING
 701 W. MARKHAM
 LITTLE ROCK, ARKANSAS 72201

PRELIMINARY
 SUBJECT
 TO
 REVISION

DRAWN BY	RFR
DESIGNED	RFR
CHECKED	BAP
DATE	03 / 20 / 24
SCALE	1" = 40'
PROJECT NO.	01-22-ST-99
SHEET NO.	C-11

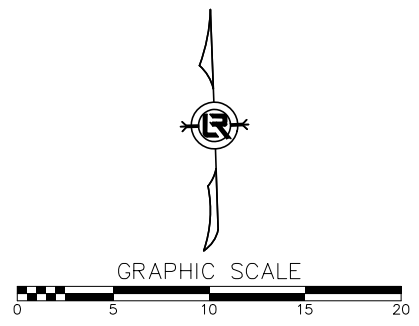
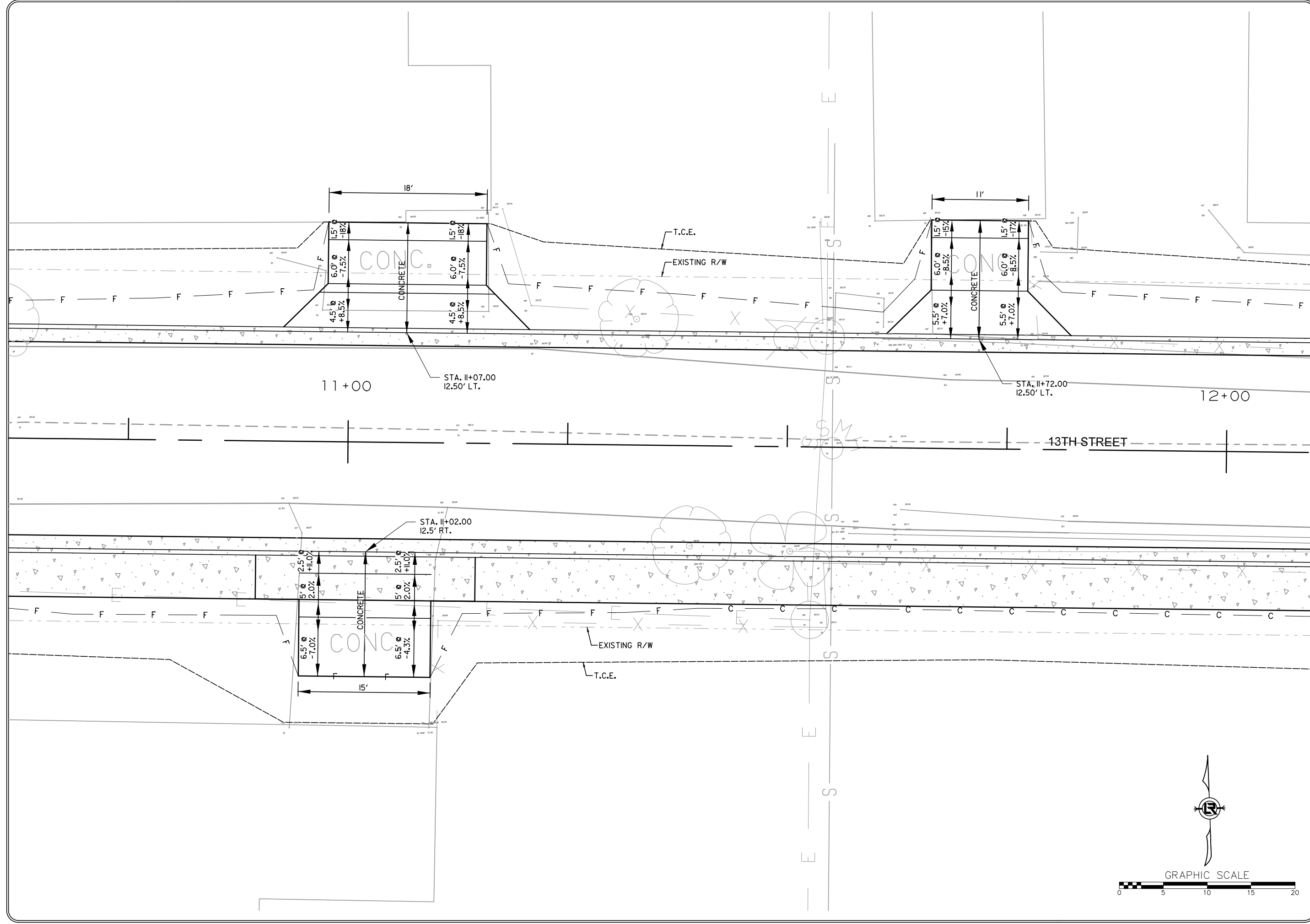
REVISIONS	DATE

CITY OF LITTLE ROCK, ARKANSAS
 13TH STREET
 DRIVEWAY DETAIL SHEET

DEPARTMENT OF PUBLIC WORKS
 CIVIL ENGINEERING
 701 W. MARKHAM
 LITTLE ROCK, ARKANSAS 72201

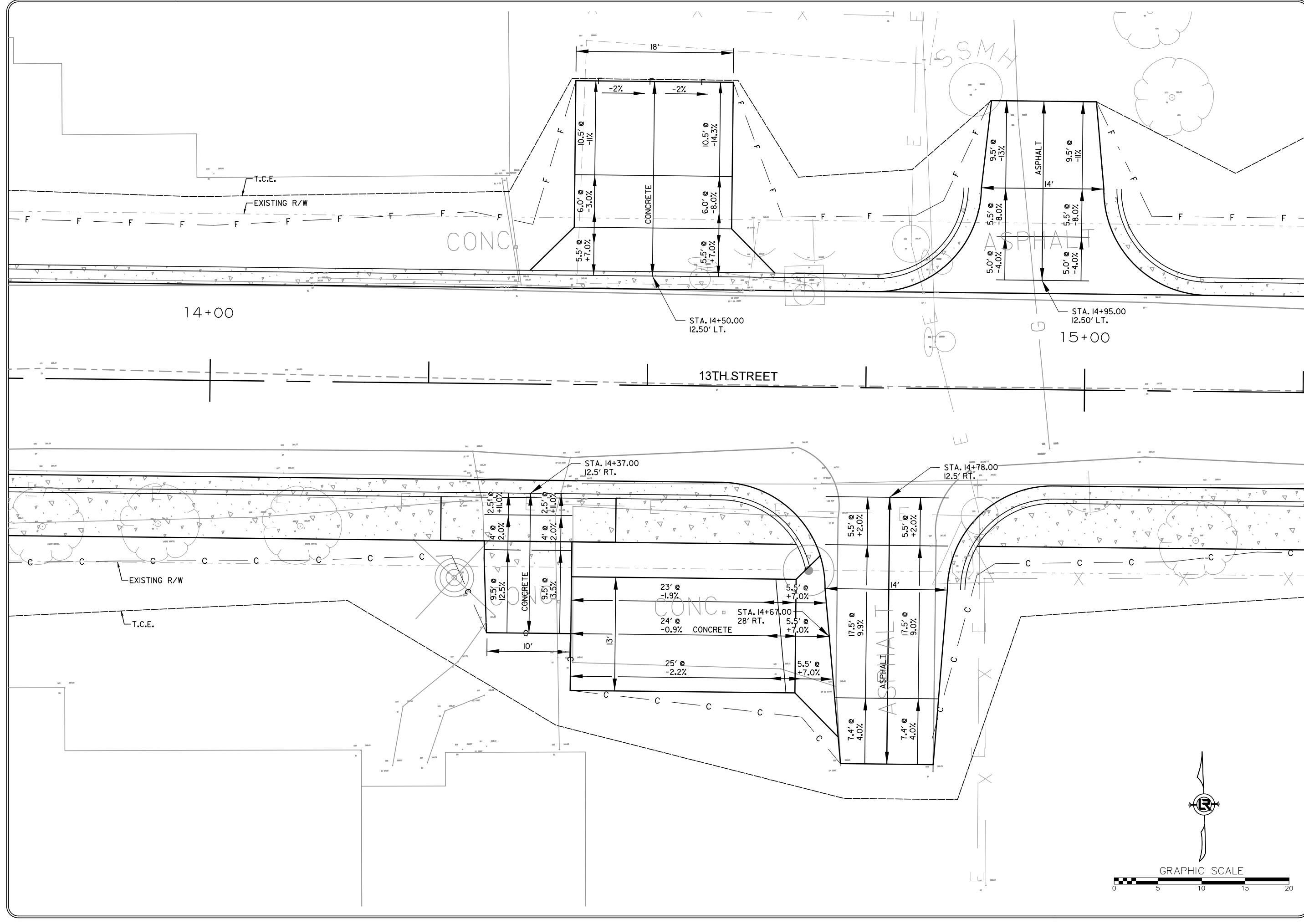
PRELIMINARY
 SUBJECT
 TO
 REVISION

DRAWN BY
 RFR
 DESIGNED
 RFR
 CHECKED
 BAP
 DATE
 03 / 20 / 24
 SCALE
 1" = 10'
 PROJECT NO.
 01-22-ST-99
 SHEET NO.
C-12



REVISIONS	DATE

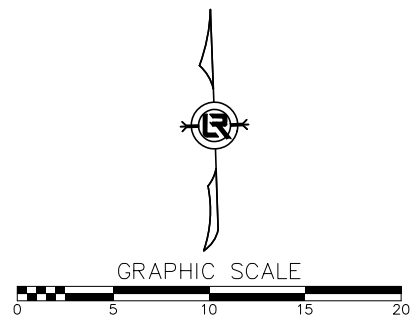
CITY OF LITTLE ROCK, ARKANSAS
 13TH STREET
 DRIVEWAY DETAIL SHEET



DEPARTMENT OF PUBLIC WORKS
 CIVIL ENGINEERING
 701 W. MARKHAM
 LITTLE ROCK, ARKANSAS 72201

PRELIMINARY
 SUBJECT
 TO
 REVISION

DRAWN BY
 RFR
 DESIGNED
 RFR
 CHECKED
 BAP
 DATE
 03 / 20 / 24
 SCALE
 1" = 10'
 PROJECT NO.
 01-22-ST-99
 SHEET NO.
 C-13



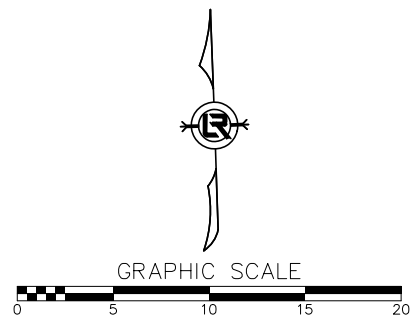
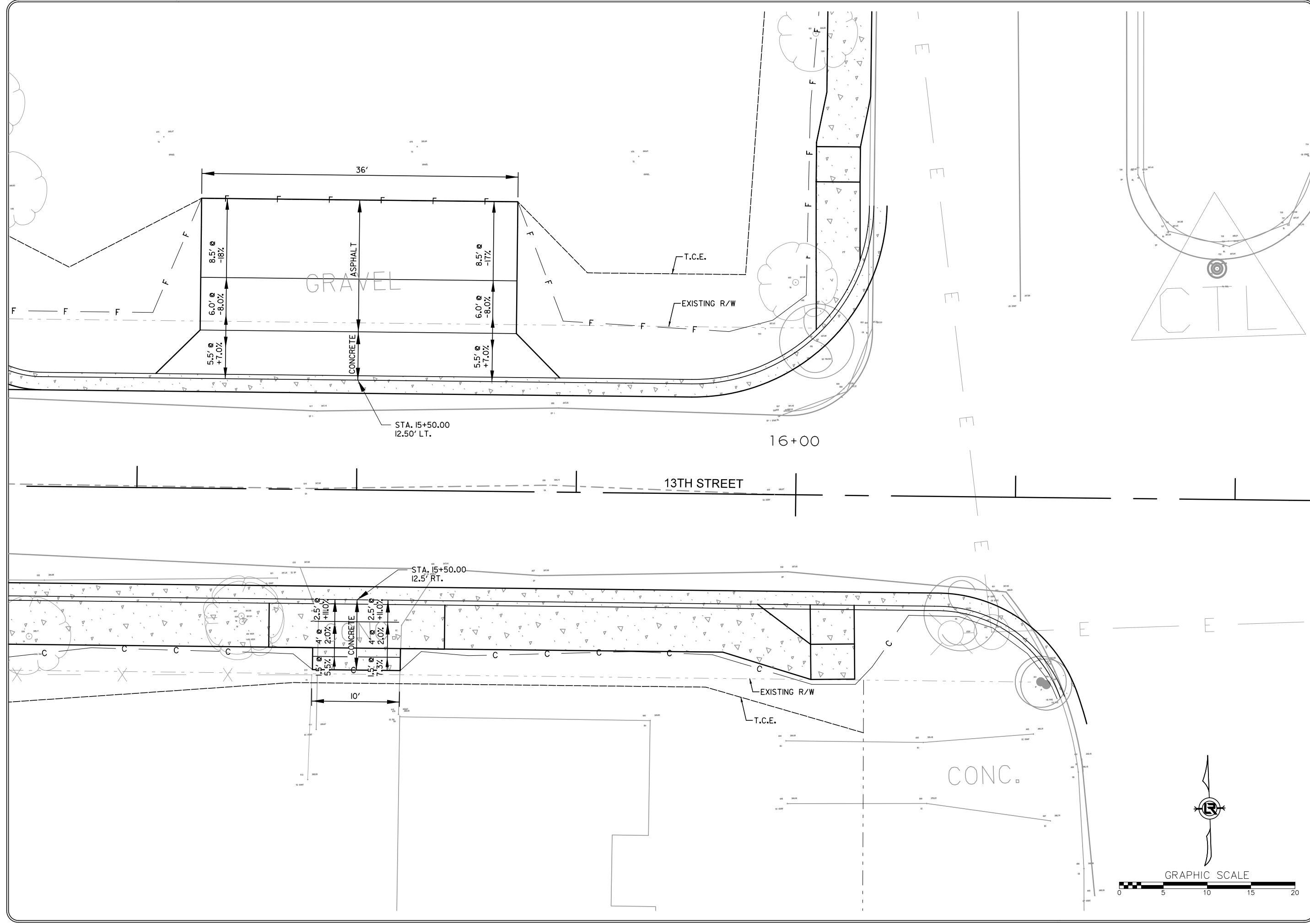
REVISIONS	DATE

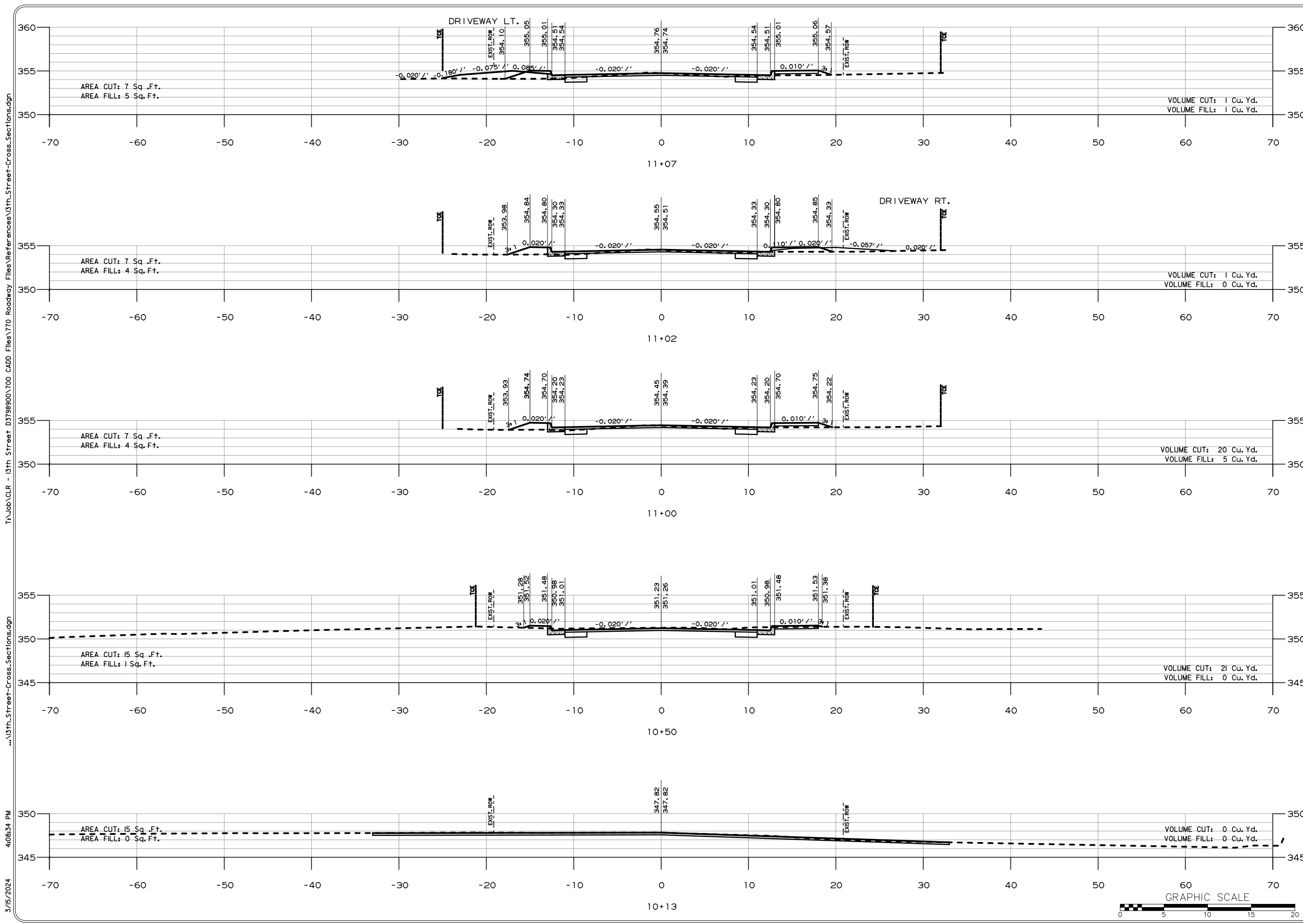
CITY OF LITTLE ROCK, ARKANSAS
 13TH STREET
 DRIVEWAY DETAIL SHEET

DEPARTMENT OF PUBLIC WORKS
 CIVIL ENGINEERING
 701 W. MARKHAM
 LITTLE ROCK, ARKANSAS 72201

PRELIMINARY
 SUBJECT
 TO
 REVISION

DRAWN BY
 RFR
 DESIGNED
 RFR
 CHECKED
 BAP
 DATE
 03 / 20 / 24
 SCALE
 1" = 10'
 PROJECT NO.
 01-22-ST-99
 SHEET NO.
C-14





REVISIONS	DATE

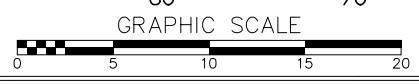
CITY OF LITTLE ROCK, ARKANSAS
 13TH STREET
 CROSS SECTIONS

DEPARTMENT OF PUBLIC WORKS
 CIVIL ENGINEERING
 701 W. MARKHAM
 LITTLE ROCK, ARKANSAS 72201

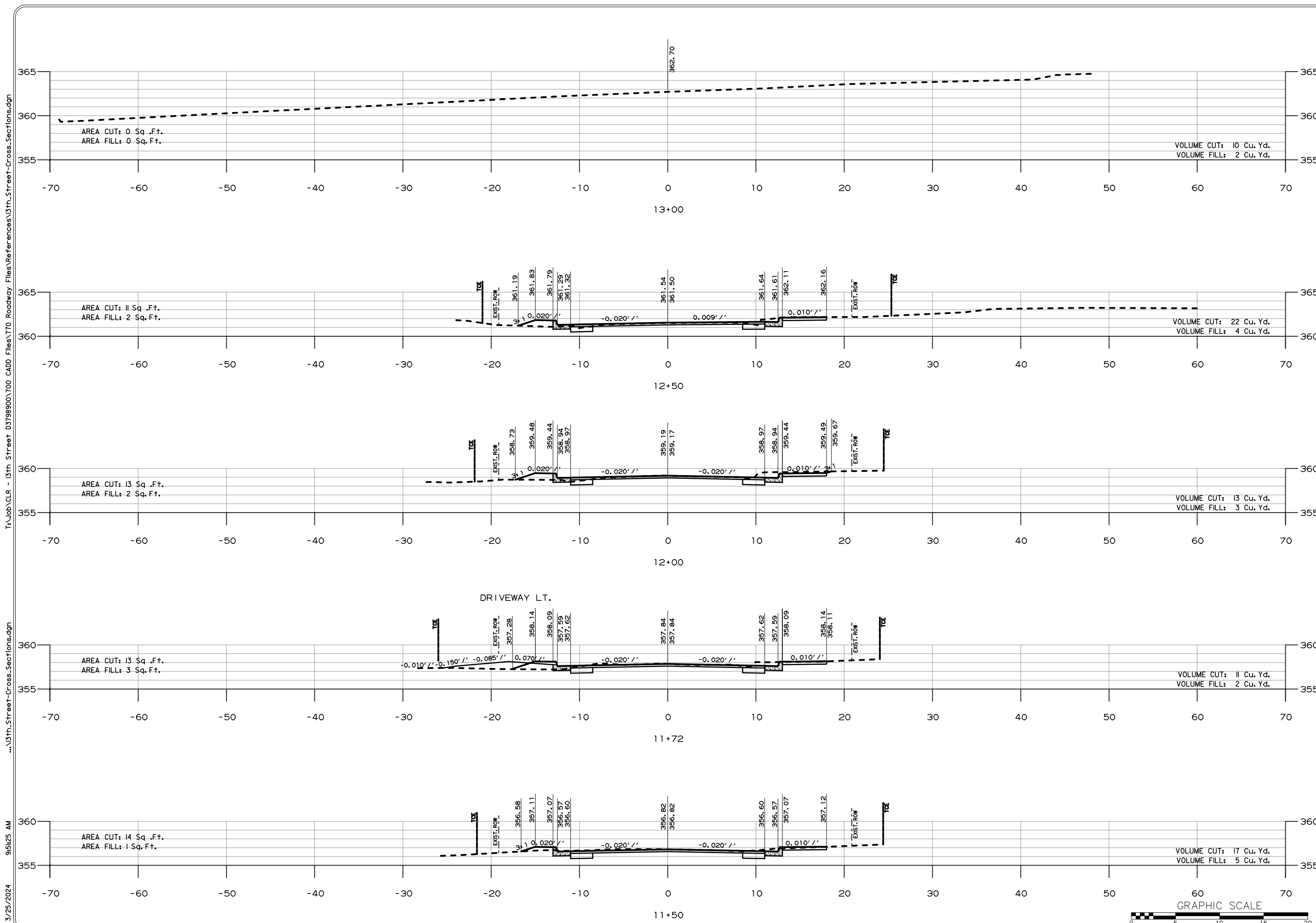
PRELIMINARY
 SUBJECT
 TO
REVISION

DRAWN BY
 RFR
 DESIGNED
 RFR
 CHECKED
 BAP
 DATE
 03 / 20 / 24
 SCALE

PROJECT NO.
 01-22-ST-99
 SHEET NO.
C-15



T:\Job\CLR - 13th Street - D3798900\700_CADD_Files\770_Roadway_Files\References\13th_Street-Cross-Sections.dgn
 ...\\13th_Street-Cross-Sections.dgn
 3/15/2024 4:08:34 PM



REVISIONS	DATE

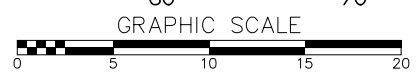
CITY OF LITTLE ROCK, ARKANSAS
 13TH STREET
 CROSS SECTIONS

DEPARTMENT OF PUBLIC WORKS
 CIVIL ENGINEERING
 701 W. MARKHAM
 LITTLE ROCK, ARKANSAS 72201

PRELIMINARY
 SUBJECT
 TO
REVISION

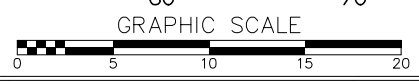
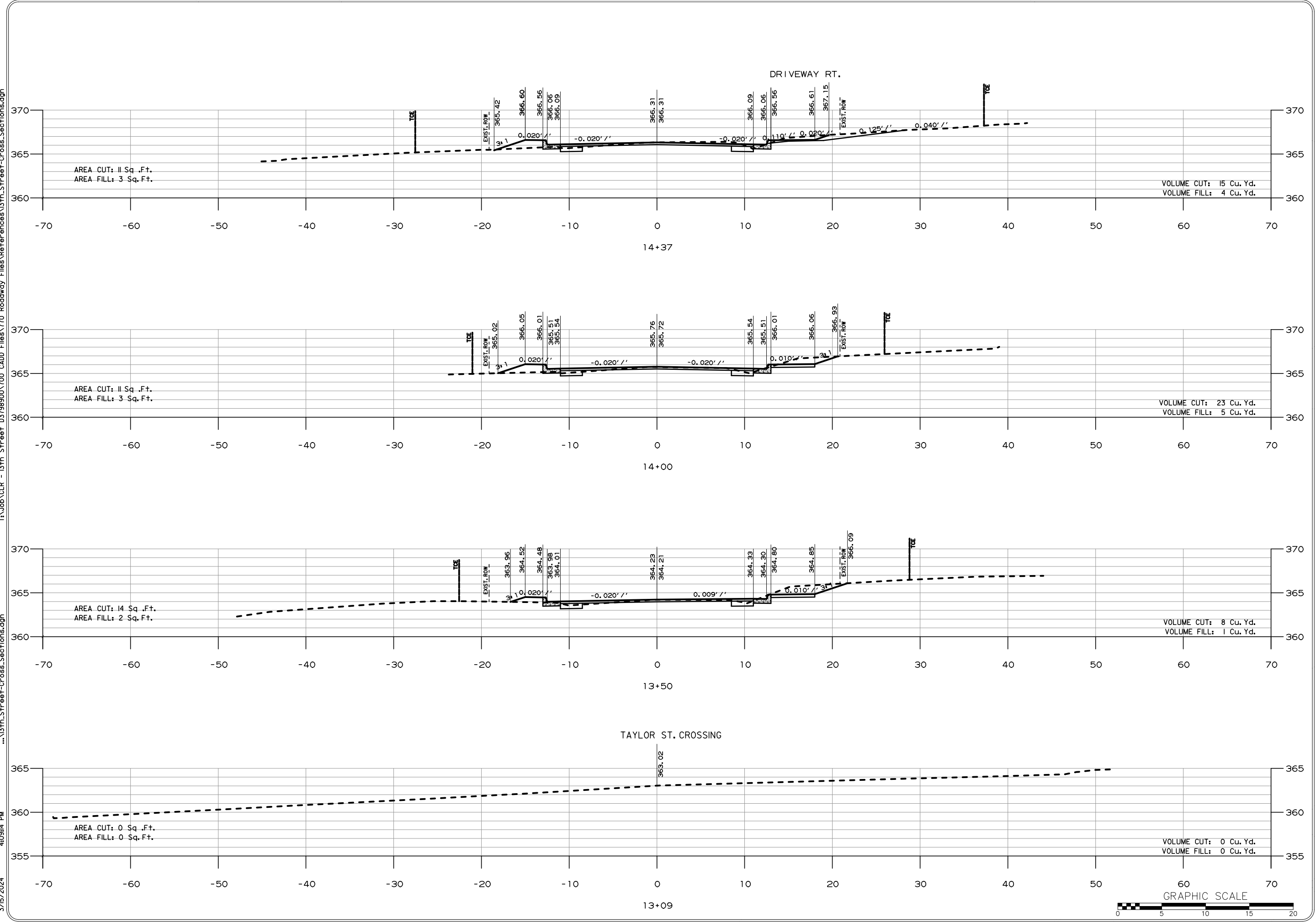
DRAWN BY
 RFR
 DESIGNED
 RFR
 CHECKED
 BAP
 DATE
 03 / 20 / 24
 SCALE

PROJECT NO.
 01-22-ST-99
 SHEET NO.
C-16




T:\Job\CLR - 13th Street - 13th Street Cross Sections.dgn
 CADD Files\770 Roadway Files\References\13th Street Cross Sections.dgn
 3/25/2024 9:54:25 AM

T:\job\CLR - 13th Street - 13th Street-Cross-Sections.dgn
... \13th-Street-Cross-Sections.dgn
4:09:14 PM
3/15/2024



REVISIONS	DATE

CITY OF LITTLE ROCK, ARKANSAS
13TH STREET
CROSS SECTIONS

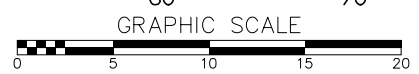
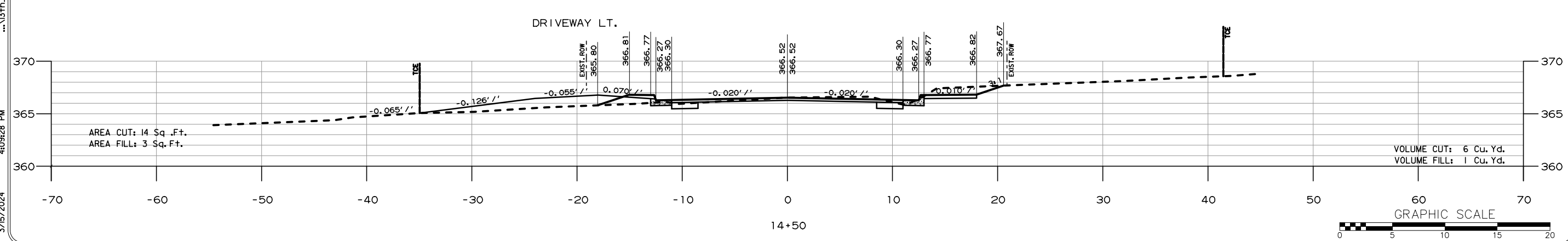
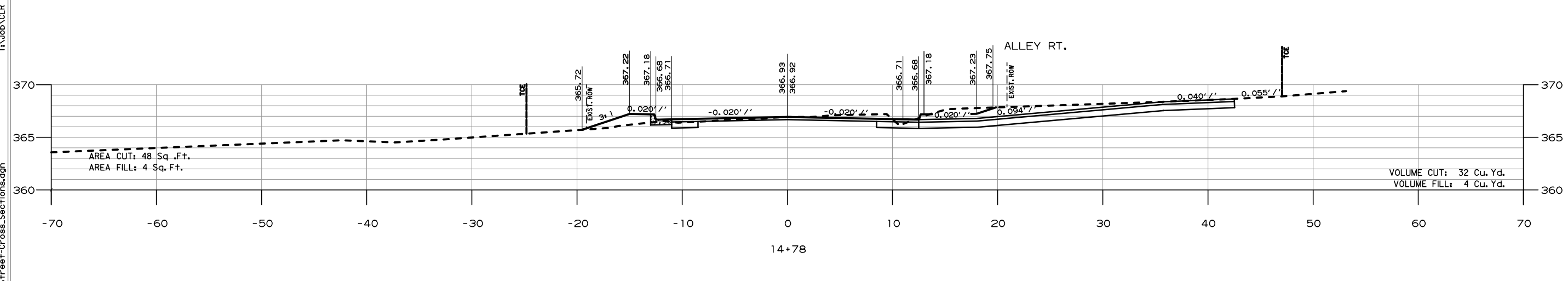
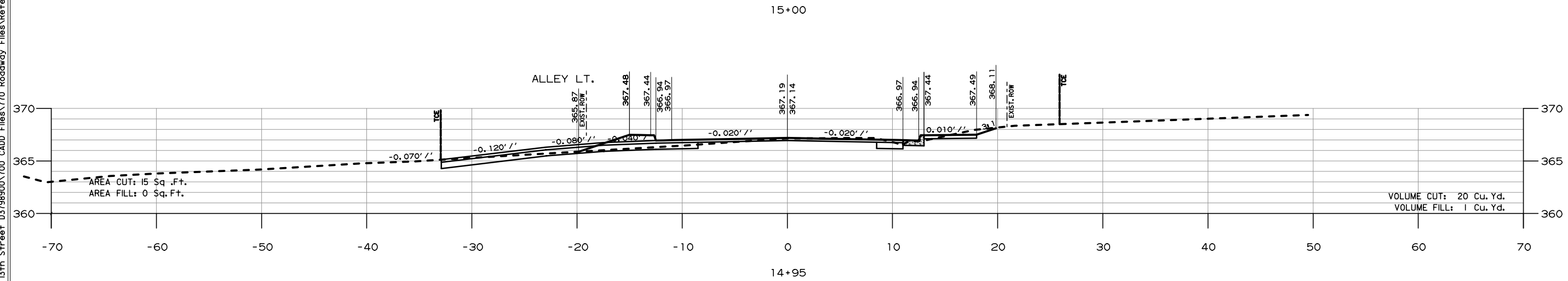
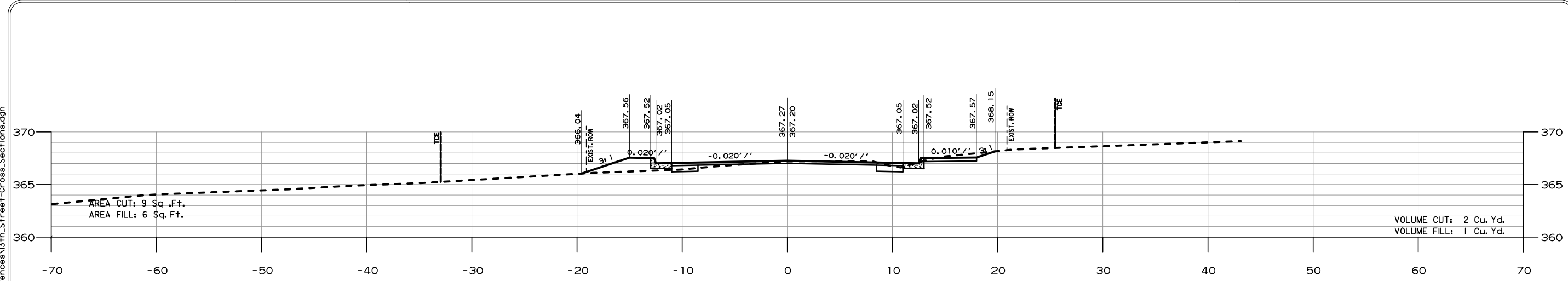


DEPARTMENT OF PUBLIC WORKS
CIVIL ENGINEERING
701 W. MARKHAM
LITTLE ROCK, ARKANSAS 72201

PRELIMINARY
SUBJECT
TO
REVISION

DRAWN BY
RFR
DESIGNED
RFR
CHECKED
BAP
DATE
03 / 20 / 24
SCALE
PROJECT NO.
01-22-ST-99
SHEET NO.
C-17

T:\job\CLR - 13th Street - Cross Sections.dgn
... \13th Street - Cross Sections.dgn
4:09:28 PM
3/15/2024



REVISIONS	DATE

CITY OF LITTLE ROCK, ARKANSAS
13TH STREET
CROSS SECTIONS

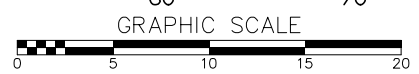
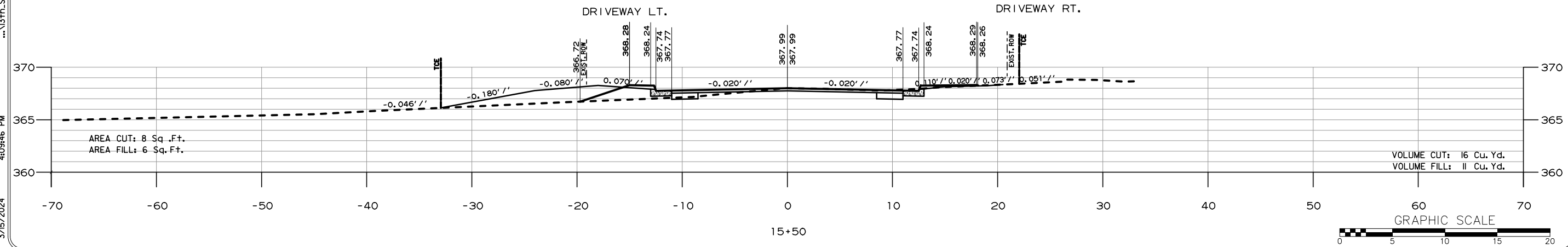
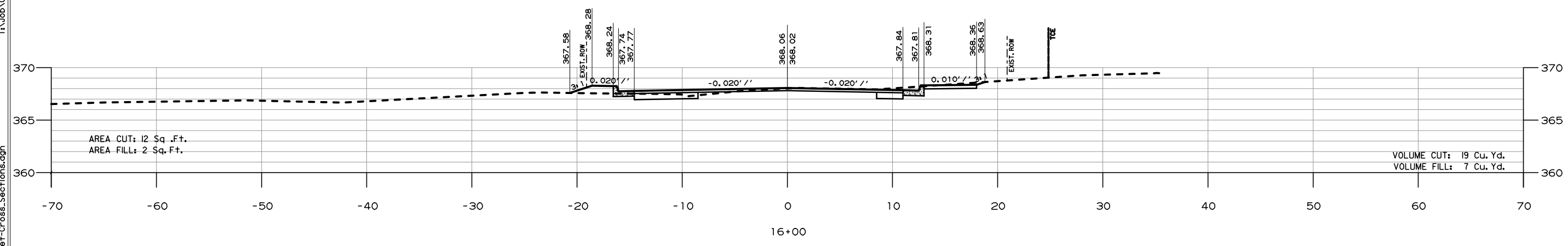
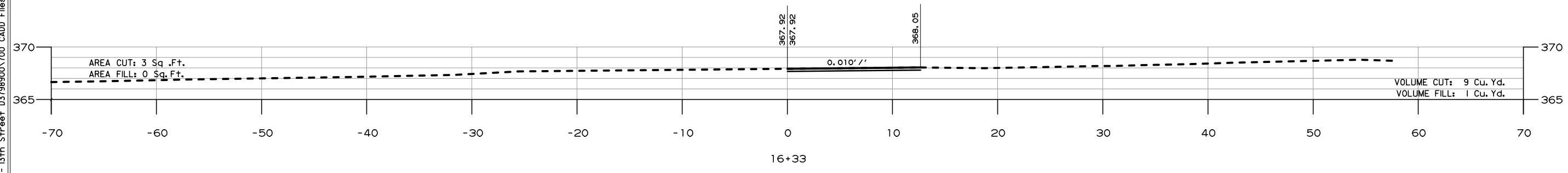
DEPARTMENT OF PUBLIC WORKS
CIVIL ENGINEERING
701 W. MARKHAM
LITTLE ROCK, ARKANSAS 72201

PRELIMINARY
SUBJECT
TO
REVISION

DRAWN BY
RFR
DESIGNED
RFR
CHECKED
BAP
DATE
03 / 20 / 24
SCALE

PROJECT NO.
01-22-ST-99
SHEET NO.
C-18

T:\Job\CLR - 13th Street - 13th Street-Cross-Sections.dgn
...\\13th-Street-Cross-Sections.dgn
4:09:46 PM
3/15/2024



REVISIONS	DATE

CITY OF LITTLE ROCK, ARKANSAS
13TH STREET
CROSS SECTIONS

DEPARTMENT OF PUBLIC WORKS
CIVIL ENGINEERING
701 W. MARKHAM
LITTLE ROCK, ARKANSAS 72201

PRELIMINARY
SUBJECT
TO
REVISION

DRAWN BY
RFR
DESIGNED
RFR
CHECKED
BAP
DATE
03 / 20 / 24
SCALE

PROJECT NO.
01-22-ST-99
SHEET NO.
C-19