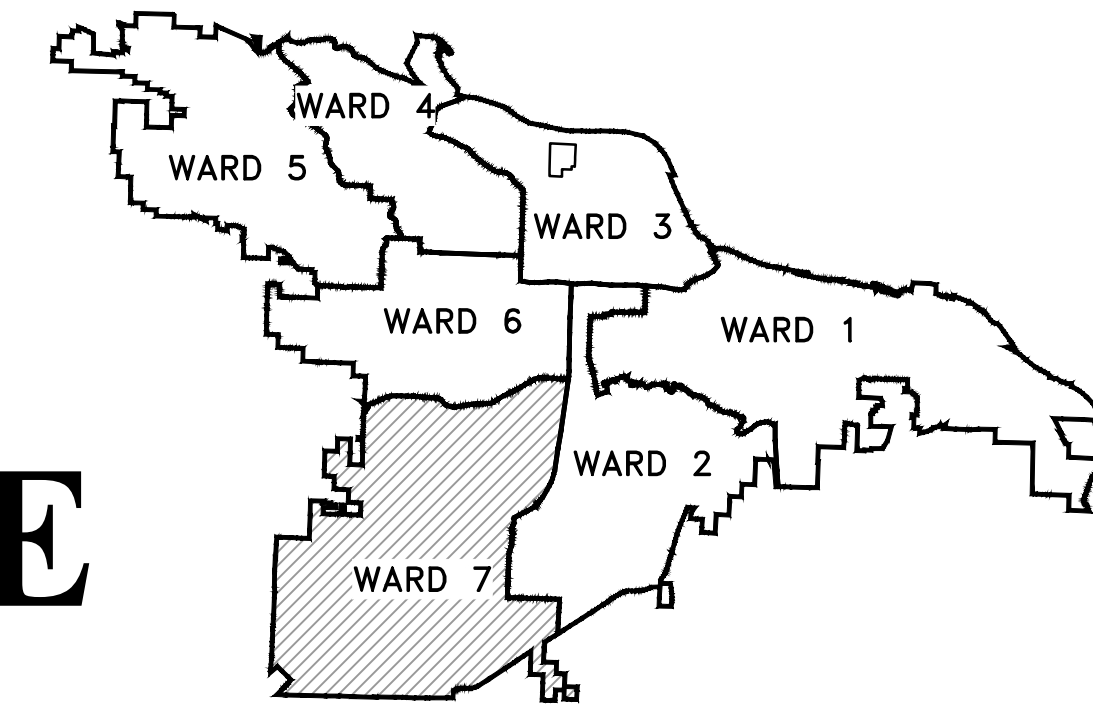
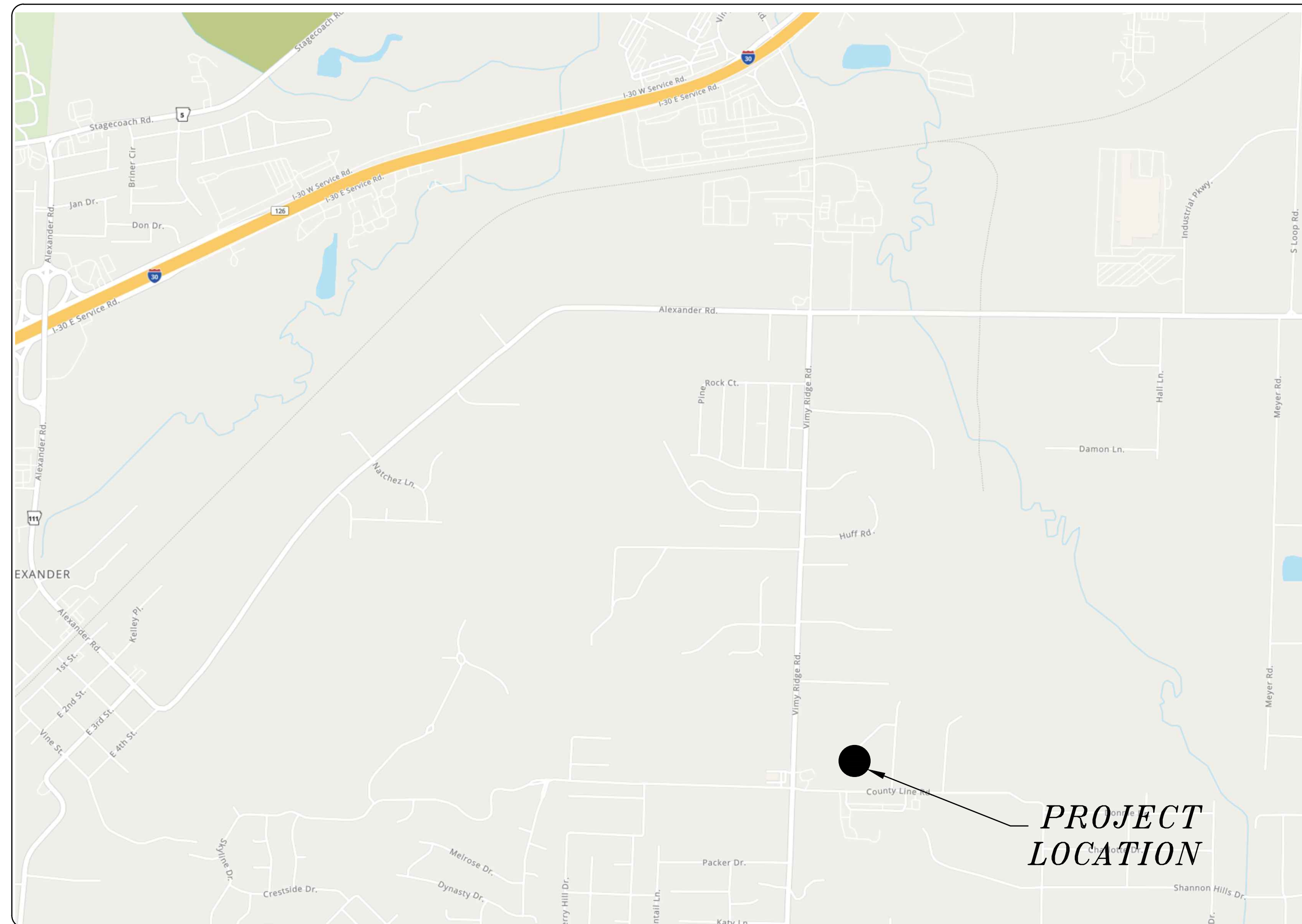


# IRISH ROSE CIRCLE DRAINAGE



PROJECT LOCATION – WARD 7

SHEET NO.	TITLE
C1	COVER SHEET
C2	GENERAL NOTES, LEGEND AND QUANTITIES
C3	EXISTING CONDITIONS
C4	PLAN VIEW
C5	MAINTENANCE OF TRAFFIC



**2022-2024  
BOND PROGRAM**

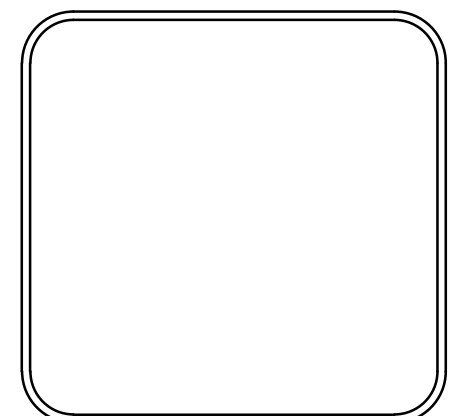
DEPARTMENT OF PUBLIC WORKS  
CIVIL ENGINEERING  
701 WEST MARKHAM STREET  
LITTLE ROCK, ARKANSAS 72201



REVISIONS	DATE

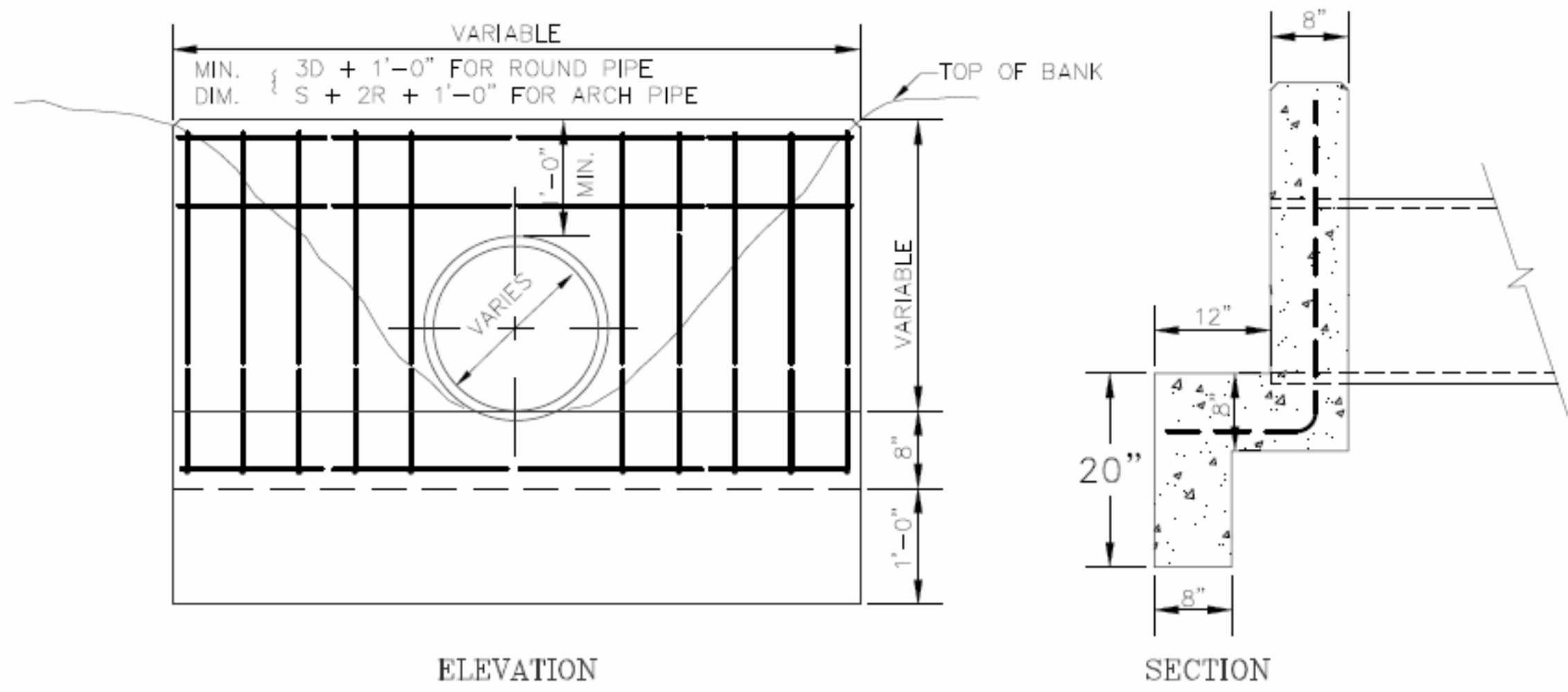
CITY OF LITTLE ROCK, ARKANSAS  
HEINKE ROD DRAINAGE  
COVER SHEET

DEPARTMENT OF PUBLIC WORKS  
CIVIL ENGINEERING  
701 W. MARKHAM  
LITTLE ROCK, ARKANSAS 72201



DRAWN BY	VH
DESIGNED	VH
CHECKED	DH
DATE	4-24-2024
SCALE	1"=1000'
PROJECT NO.	CLR #??
SHEET NO.	C1

CLR PROJECT 23-			
IRISH ROSE COURT DRAINAGE			
		24-Apr-24	
ITEM #	ITEM DESCRIPTION	UNIT	QUANTITY
2.01	SITE PREPARATION (INCLUDES MOBILIZATION)	LS	1
10.02A	AREA INLET - 4' BOX	EA	1
11.06	REINFORCED CONCRETE HEADWALL	CY	2
13.18S	STORM DRAIN PIPE, 18" (SIDE DRAIN)	LF	92
14.01	SOLID SODDING, BERMUDA (INCLUDES 4" OF TOPSOIL)	SY	195
16.01	MAINTENACE OF TRAFFIC	LS	1
19.01	FINAL CLEAN UP	LS	1
SP	ASBUILT	LS	1
<b>SUB-TOTAL</b>			
<b>10% CONTINGENCY</b>			
<b>GRAND-TOTAL</b>			



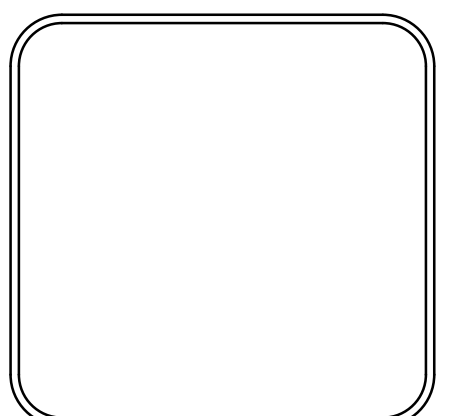
NOTE: 1. ALL REINFORCING STEEL TO BE #4 BARS @ 12" O.C.  
 2. ALL EXPOSED EDGES TO HAVE 3/4" CHAMFER.  
 STRAIGHT - HEADWALL DETAIL

EXISTING	PROPOSED
IRON ROD	PROPOSED CONTOUR
PK NAIL	PROPOSED SPOT ELEVATION
R.R. SPIKE	PROPOSED SPOT CURB ELEVATION
CONC. MONUMENT	STORM SEWER - PIPE
WATER VALVE	STORM SEWER - MITERED END SECTION
WATER METER	STORM SEWER - GRATE INLET
FIRE HYDRANT	STORM SEWER - JUNCTION BOX
GAS METER	STORM SEWER - FLARED END SECTION
GAS VALVE	STORM SEWER - HEADWALL
CLEAN-OUT	STORM SEWER - SINGLE WING
GUARD POST (BOLLARD)	STORM SEWER - DOUBLE WING
SIGN POST	STORM SEWER - AREA INLET
BENCHMARK	GRADE BREAK LINE
STORM SEWER MANHOLE	HIGH POINT
SANITARY SEWER MANHOLE	LOW POINT
TELEPHONE MANHOLE	CUT LINE
ELECTRIC MANHOLE	FILL LINE
TELEPHONE BOX	SANITARY SEWER PIPE
ELECTRIC BOX	SANITARY SEWER MANHOLE
CABLE BOX	PROPOSED CURB
UTILITY POLE	PROPOSED CONCRETE
GUY WIRE	CONSTRUCTION - ENTRANCE/EXIT
LIGHT POLE	CHECK DAM
POST OR POLE (TYPE AS NOTED)	DIVERSION BERM
MAILBOX	DOWNDRAIN STRUCTURE - TEMPORARY
DECIDUOUS TREE	ROCK DAM
EVERGREEN/CONIFEROUS TREE	SEDIMENT BARRIER - SILT FENCE
BUSH	SEDIMENT BARRIER - GRAVEL RING
PROPERTY LINE	SEDIMENT BARRIER - BLOCK & GRAVEL
SETBACK LINE	SEDIMENT BARRIER - BLOCK
EASEMENT LINE	TEMPORARY SEDIMENT BASIN
CURB	SILT FENCE - TYPE A
FENCE	SILT FENCE - TYPE B
OVERHEAD ELECTRIC	SILT FENCE - TYPE C
OVERHEAD TELEPHONE	STORM DRAIN OUTLET PROTECTION
OVERHEAD CABLE	SURFACE ROUGHENING
UNDERGROUND TELEPHONE	DISTURBED AREA STABILIZATION - TEMPORARY STABILIZATION
UNDERGROUND ELECTRIC	DISTURBED AREA STABILIZATION - TEMPORARY GRASSING
UNDERGROUND CABLE	DISTURBED AREA STABILIZATION - PERMANENT GRASSING
WATER LINE	MATting/BLANKETS
SEWER LINE	
GAS LINE	
STORM SEWER/CULVERT	
EDGE OF WOODS	
CONTOUR LINE	

REVISIONS	DATE

CITY OF LITTLE ROCK, ARKANSAS  
 44TH STREET IMPROVEMENTS  
 GENERAL NOTES, LEGEND AND QUANTITIES

DEPARTMENT OF PUBLIC WORKS  
 CIVIL ENGINEERING  
 701 W. MARKHAM  
 LITTLE ROCK, ARKANSAS 72201

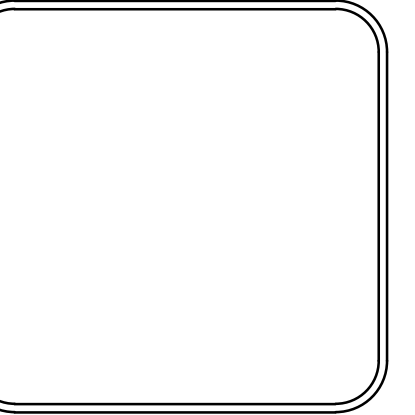
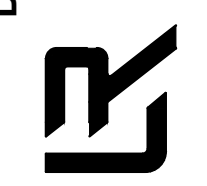


DRAWN BY  
 FV  
 DESIGNED  
 DH  
 CHECKED  
 VH  
 DATE  
 4-24-2024  
 SCALE  
 N.T.S  
 PROJECT NO.  
 SHEET NO.  
 C2

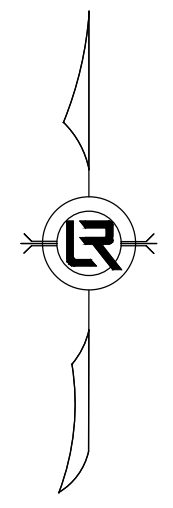
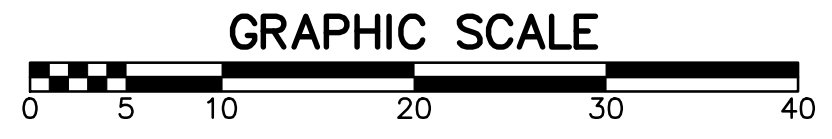
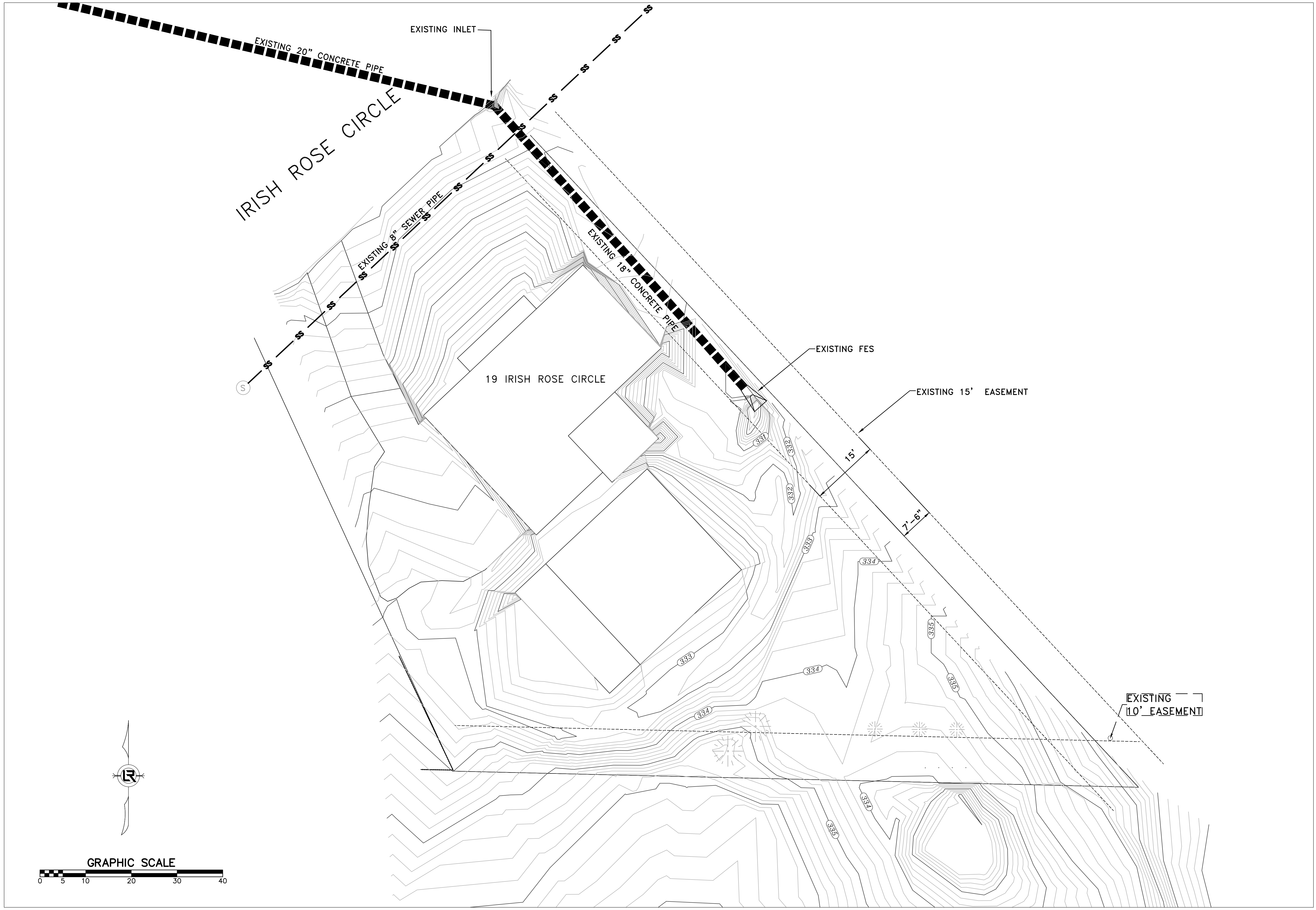
REVISIONS	DATE

CITY OF LITTLE ROCK, ARKANSAS  
 IRISH ROSE CIRCLE DRAINAGE  
 EXISTING CONDITIONS

DEPARTMENT OF PUBLIC WORKS  
 CIVIL ENGINEERING  
 701 W. MARKHAM  
 LITTLE ROCK, ARKANSAS 72201



DRAWN BY  
 VH  
 DESIGNED  
 VH  
 CHECKED  
 DH  
 DATE  
 4-24-2024  
 SCALE  
 1" = 10'  
 PROJECT NO.  
 SHEET NO.  
 C3



IRISH ROSE CIRCLE

19 IRISH ROSE CIRCLE

4FT AREA INLET  
WITH OPENINGS ON  
NORTHEAST AND SOUTHWEST  
RIM 330.40  
FL 329.27

MAINTAIN POSITIVE FLOW  
TO AREA INLET DURING  
FINAL GRADING.

92 LF OF 18" SIDE DRAIN

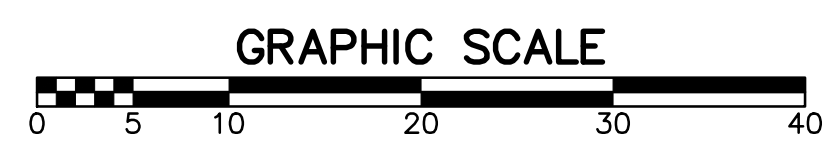
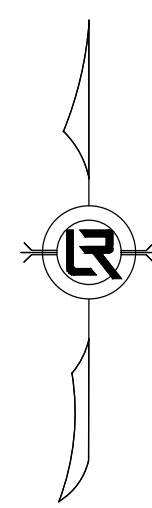
EXISTING 15' EASEMENT

TREES TO BE DEMO

3'X10' CONCRETE HEADWALL  
FL 331.90

EXISTING  
10' EASEMENT

MAINTAIN POSITIVE FLOW  
TO HEADWALL DURING  
FINAL GRADING.



REVISIONS	DATE

CITY OF LITTLE ROCK, ARKANSAS  
IRISH ROSE CIRCLE DRAINAGE

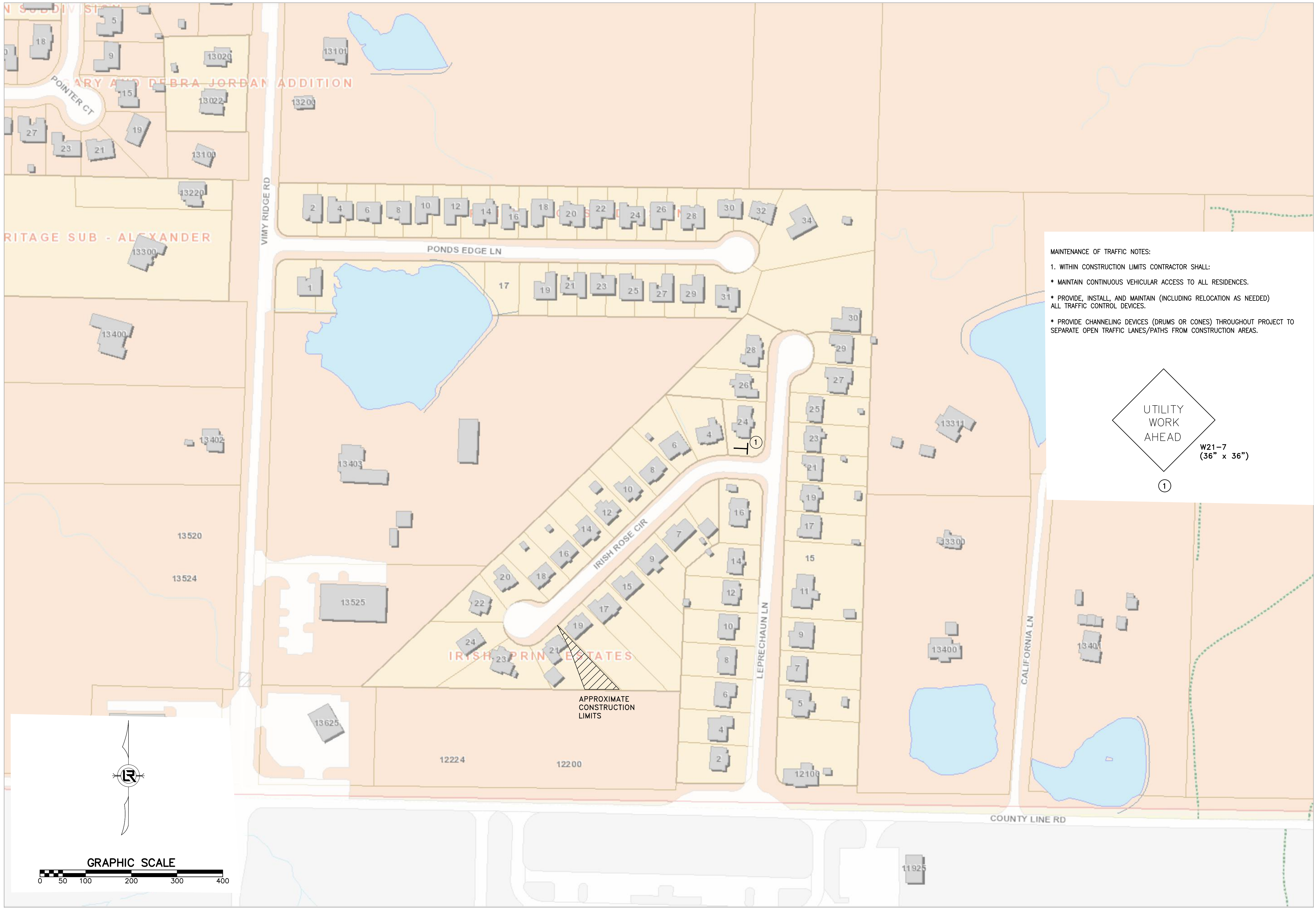
PLAN VIEW

DEPARTMENT OF PUBLIC WORKS  
CIVIL ENGINEERING  
701 W. MARKHAM  
LITTLE ROCK, ARKANSAS 72201

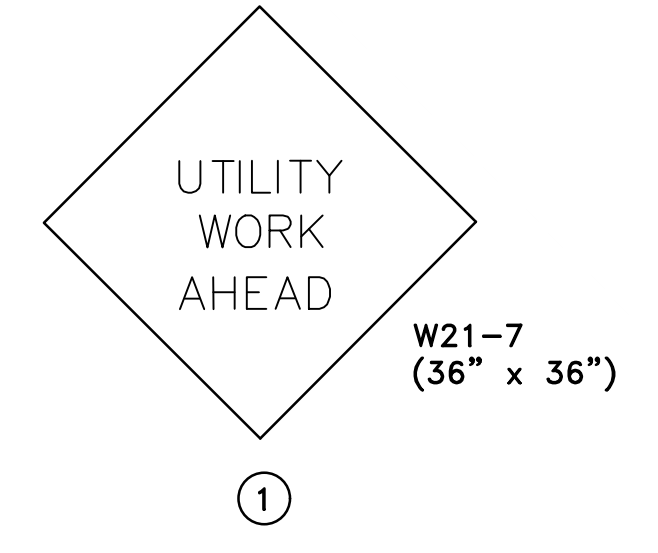


DRAWN BY  
VH  
DESIGNED  
VH  
CHECKED  
DH  
DATE  
4-24-2024  
SCALE  
1" = 10'  
PROJECT NO.

SHEET NO.  
C4



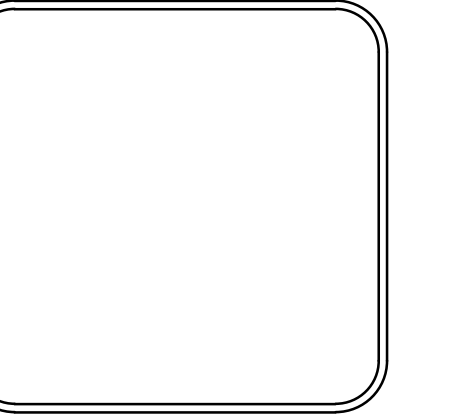
MAINTENANCE OF TRAFFIC NOTES:  
 1. WITHIN CONSTRUCTION LIMITS CONTRACTOR SHALL:  
 • MAINTAIN CONTINUOUS VEHICULAR ACCESS TO ALL RESIDENCES.  
 • PROVIDE, INSTALL, AND MAINTAIN (INCLUDING RELOCATION AS NEEDED) ALL TRAFFIC CONTROL DEVICES.  
 • PROVIDE CHANNELING DEVICES (DRUMS OR CONES) THROUGHOUT PROJECT TO SEPARATE OPEN TRAFFIC LANES/PATHS FROM CONSTRUCTION AREAS.



REVISIONS	DATE

CITY OF LITTLE ROCK, ARKANSAS  
 IRISH ROSE CIRCLE DRAINAGE  
 MAINTENANCE OF TRAFFIC

DEPARTMENT OF PUBLIC WORKS  
 CIVIL ENGINEERING  
 701 W. MARKHAM  
 LITTLE ROCK, ARKANSAS 72201



DRAWN BY  
 VH  
 DESIGNED  
 VH  
 CHECKED  
 DH  
 DATE  
 4-24-2024  
 SCALE  
 1" = 100'  
 PROJECT NO.  
 SHEET NO.  
 C5

