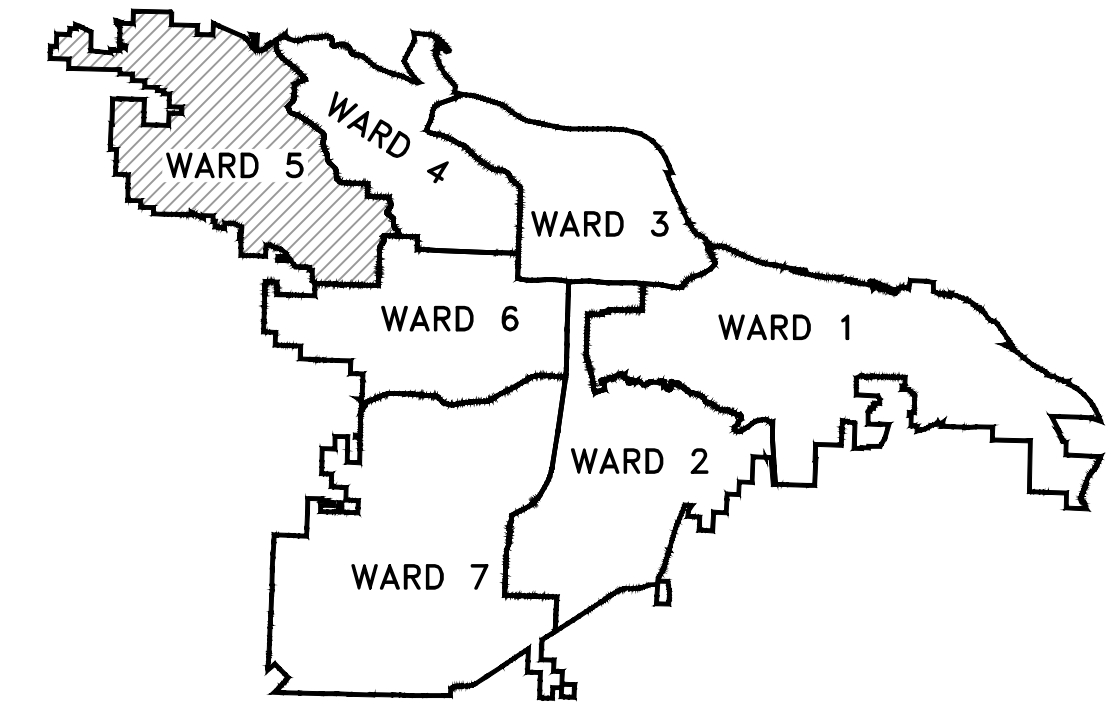
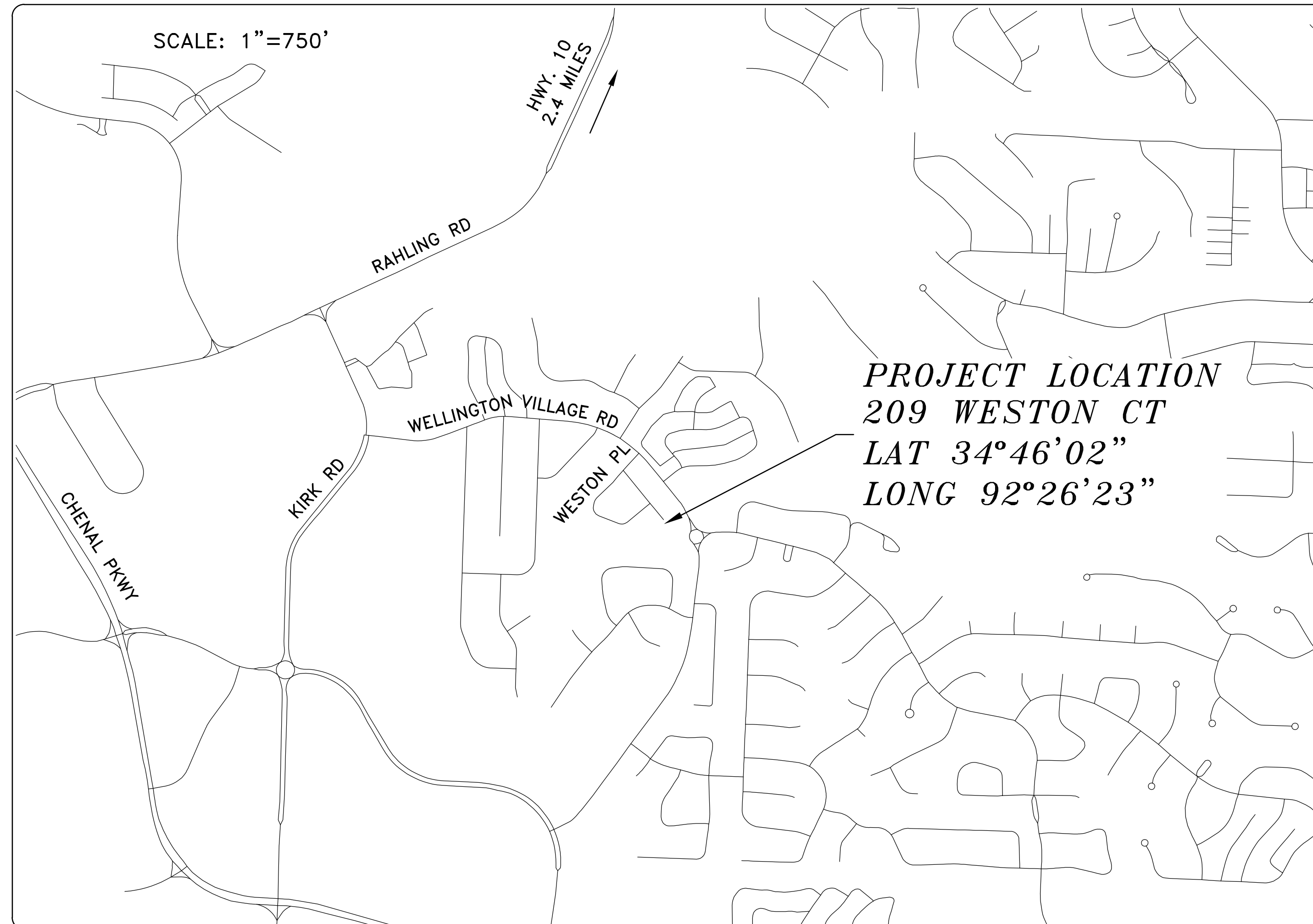
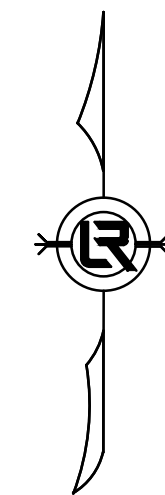


WESTON 209 DRAINAGE

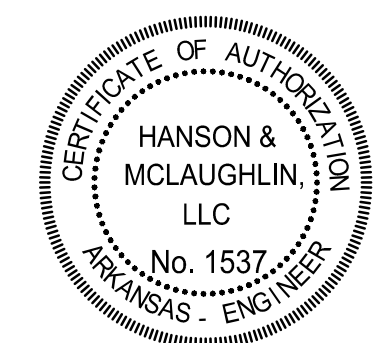


PROJECT LOCATION – WARD 5

SHEET NO.	TITLE
C1	COVER SHEET
C2	LEGEND AND QUANTITIES
C3	EXISTING CONDITIONS
C4	PLAN AND PROFILE
C5	EROSION CONTROL



**Know what's below.
Call before you dig.**



REVISIONS	DATE

WESTON 209 DRAINAGE
CITY OF LITTLE ROCK, ARKANSAS

COVER SHEET

DEPARTMENT OF PUBLIC WORKS
CIVIL ENGINEERING
701 W. MARKHAM
LITTLE ROCK, ARKANSAS 72201



DEPARTMENT OF PUBLIC WORKS
CIVIL ENGINEERING
701 WEST MARKHAM STREET
LITTLE ROCK, ARKANSAS 72201

HANSON & MCLAUGHLIN, LLC
320 EXECUTIVE COURT, SUITE 202
LITTLE ROCK, ARKANSAS 72205
(501) 716-2850

DRAWN BY
KMH
DESIGNED
KMH
CHECKED
FJS
DATE
2-28-2024
SCALE
N.T.S.
PROJECT NO.
05-22-DR-007
SHEET NO.

C1

CLR PROJECT 05-22-DR-007
 WESTON 209 DRAINAGE
 FEBRUARY 28, 2024

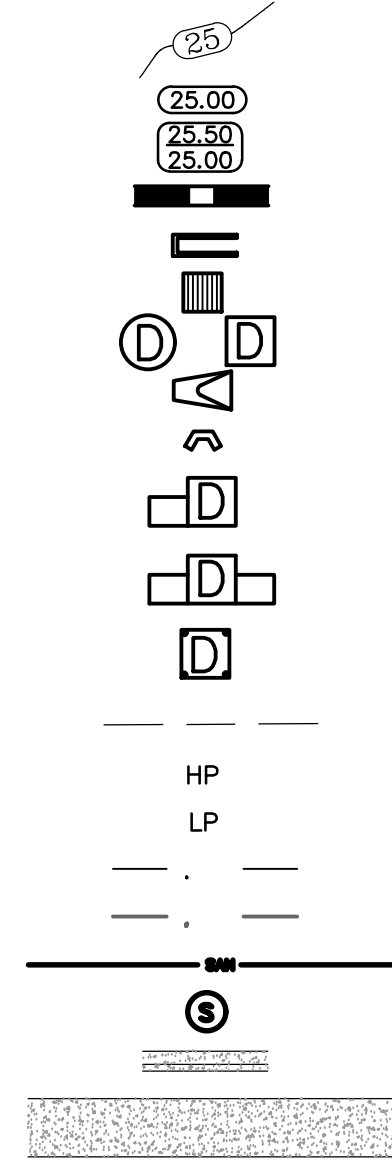
ITEM #	ITEM DESCRIPTION	UNIT	QUANTITY
2.01	Site Preparation (Incl. Mobilization)	LS	1
8.03	Concrete Curb and Gutter (Class 3)	LF	20
10.04	Curb Inlet - 4' Box	EA	1
10.07	Wing 3' Extension	EA	3
10.80	Rebuild Inlet Top	EA	1
13.18C	Storm Drain Pipe, 15", Cross Drain	LF	50
13.61	Tie Into Existing Junction Box	EA	1
14.01	Solid Sodding (Bermuda) Includes 4" Topsoil	SY	125
15.40	Repair Irrigation System	LS	1
16.01	Maintenance of Traffic	LS	1
17.01	Pavement Repairs	SY	32
18.55	Water for Dust Control	GAL	10,000
19.01	Final Clean-Up	LS	1
24.06	Sediment Barrier, Silt Fence (SD1)	EA	2
24.09	Sediment Barrier, Block (SD4)	EA	2
24.11	Silt Fence - Type A (SFA)	LF	100
24.12	Silt Fence - Type B (SFB)	LF	100
24.18	Disturbed Area Stabilization - Permanent Grassing (TS3)	AC	0.05
26.10	Trench & Excavation Safety	LS	1
SP-15	As-Built Drawings	LS	1

EXISTING

- IRON ROD ○ IR
- PK NAIL ○ PK
- R.R. SPIKE ○ RR(Sp)
- CONC. MONUMENT □ CM
- WATER VALVE ✕ WV
- WATER METER □ WM
- FIRE HYDRANT ◊ FH
- GAS METER □ GM
- GAS VALVE ⊗ GV
- CLEAN-OUT ○ CO
- GUARD POST (BOLLARD) ● GP
- SIGN POST —
- BENCHMARK —
- STORM SEWER MANHOLE (D)
- SANITARY SEWER MANHOLE (S)
- TELEPHONE MANHOLE (T)
- ELECTRIC MANHOLE (E)
- TELEPHONE BOX (TB)
- ELECTRIC BOX (EB)
- CABLE BOX (CB)
- UTILITY POLE (U)
- GUY WIRE (G)
- LIGHT POLE (L)
- POST OR POLE (TYPE AS NOTED) (P)
- MAILBOX (M)
- DECIDUOUS TREE (D)
- EVERGREEN/CONIFEROUS TREE (E)
- BUSH (B)
- PROPERTY LINE (---)
- SETBACK LINE (---)
- EASEMENT LINE (---)
- CURB (---)
- FENCE (--- X --- X ---)
- OVERHEAD UTILITY (---)
- UNDERGROUND TELEPHONE (---)
- UNDERGROUND ELECTRIC (---)
- WATER LINE (---)
- SEWER LINE (--- SAN ---)
- GAS LINE (---)
- STORM SEWER/CULVERT (--- 24" CMP/RCP/DIP ---)
- CONTOUR LINE (--- 650 ---)

PROPOSED

- CONTOUR (25)
- SPOT ELEVATION (25.00, 25.50, 25.00)
- SPOT CURB ELEVATION (25.00, 25.50, 25.00)
- STORM SEWER - PIPE
- STORM SEWER - MITERED END SECTION
- STORM SEWER - GRATE INLET
- STORM SEWER - JUNCTION BOX
- STORM SEWER - FLARED END SECTION
- STORM SEWER - HEADWALL
- STORM SEWER - INLET WITH SINGLE EXTENSION
- STORM SEWER - INLET WITH DOUBLE EXTENSION
- STORM SEWER - AREA INLET
- GRADE BREAK LINE
- HIGH POINT (HP)
- LOW POINT (LP)
- CUT LINE
- FILL LINE
- SANITARY SEWER PIPE
- SANITARY SEWER MANHOLE
- CURB
- CONCRETE
- CONSTRUCTION - ENTRANCE/EXIT
- CHECK DAM
- DIVERSION BERM
- DOWNDRAIN STRUCTURE - TEMPORARY
- ROCK DAM
- SEDIMENT BARRIER - SILT FENCE
- SEDIMENT BARRIER - GRAVEL RING
- SEDIMENT BARRIER - BLOCK & GRAVEL
- SEDIMENT BARRIER - BLOCK
- TEMPORARY SEDIMENT BASIN
- SILT FENCE - TYPE A
- SILT FENCE - TYPE B
- SILT FENCE - TYPE C
- STORM DRAIN OUTLET PROTECTION
- SURFACE ROUGHENING
- DISTURBED AREA STABILIZATION - TEMPORARY STABILIZATION (TS1)
- DISTURBED AREA STABILIZATION - TEMPORARY GRASSING (TS2)
- DISTURBED AREA STABILIZATION - PERMANENT GRASSING (TS3)
- MATTING/BLANKETS (Mb)



REVISIONS	DATE

WESTON 209 DRAINAGE
 CITY OF LITTLE ROCK, ARKANSAS
 LEGEND AND QUANTITIES

DEPARTMENT OF PUBLIC WORKS
 CIVIL ENGINEERING
 701 W. MARKHAM
 LITTLE ROCK, ARKANSAS 72201



DRAWN BY
KMH
 DESIGNED
KMH
 CHECKED
FJS
 DATE
2-28-2024
 SCALE
N.T.S.
 PROJECT NO.
05-22-DR-007
 SHEET NO.
C2

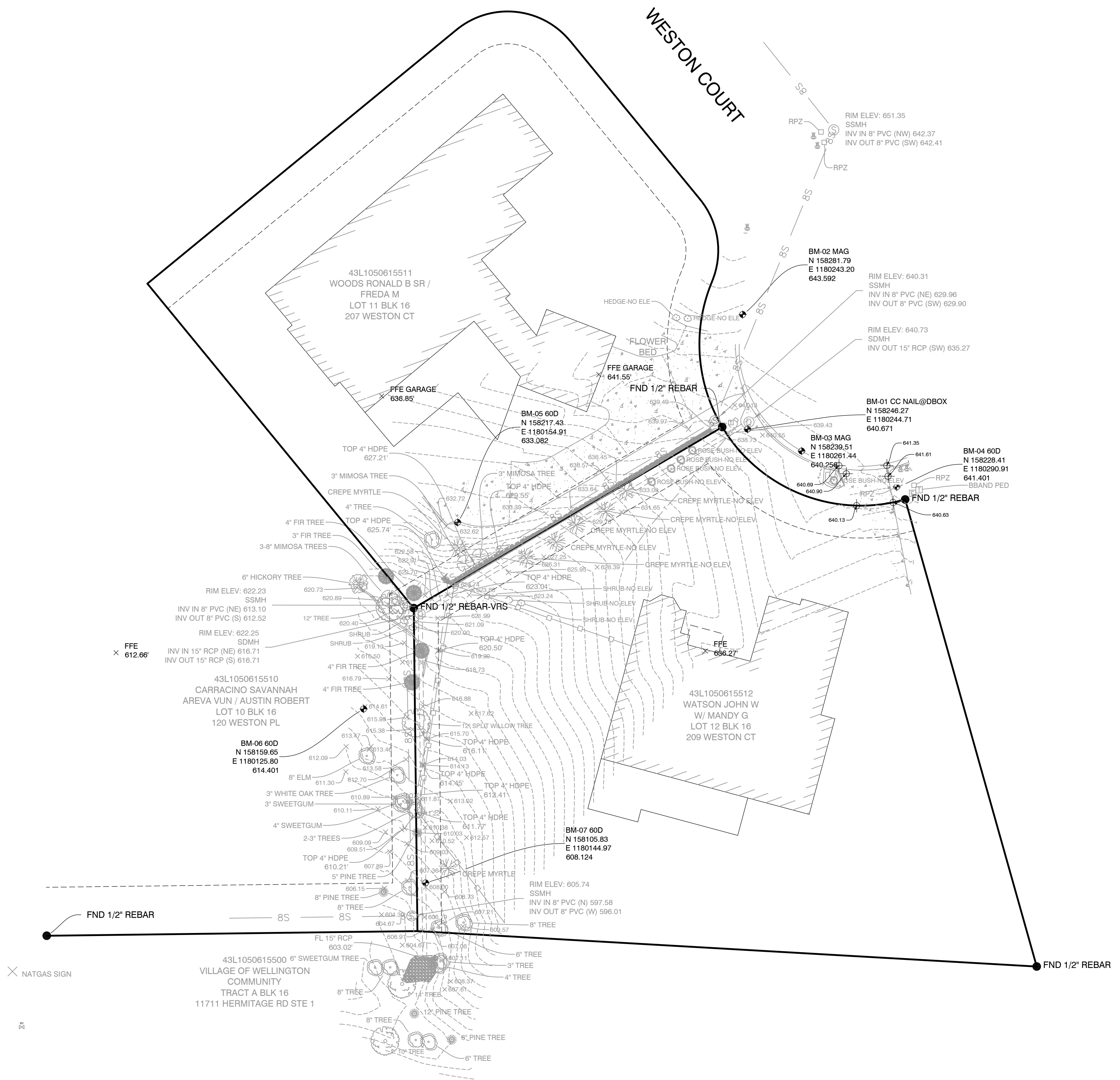
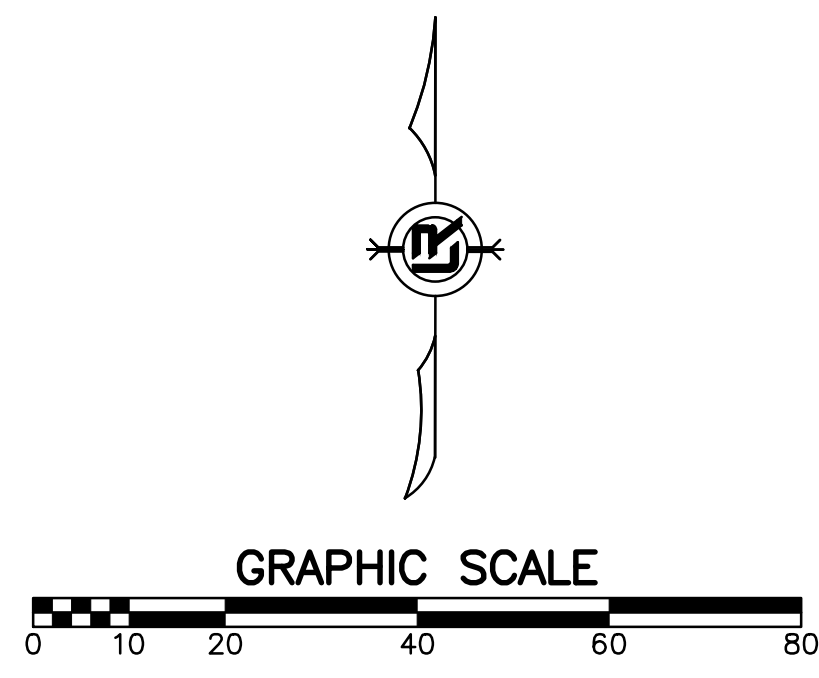
REVISIONS	DATE

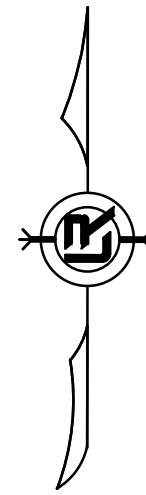
WESTON 209 DRAINAGE
CITY OF LITTLE ROCK, ARKANSAS
EXISTING CONDITIONS

DEPARTMENT OF PUBLIC WORKS
CIVIL ENGINEERING
701 W. MARKHAM
LITTLE ROCK, ARKANSAS 72201

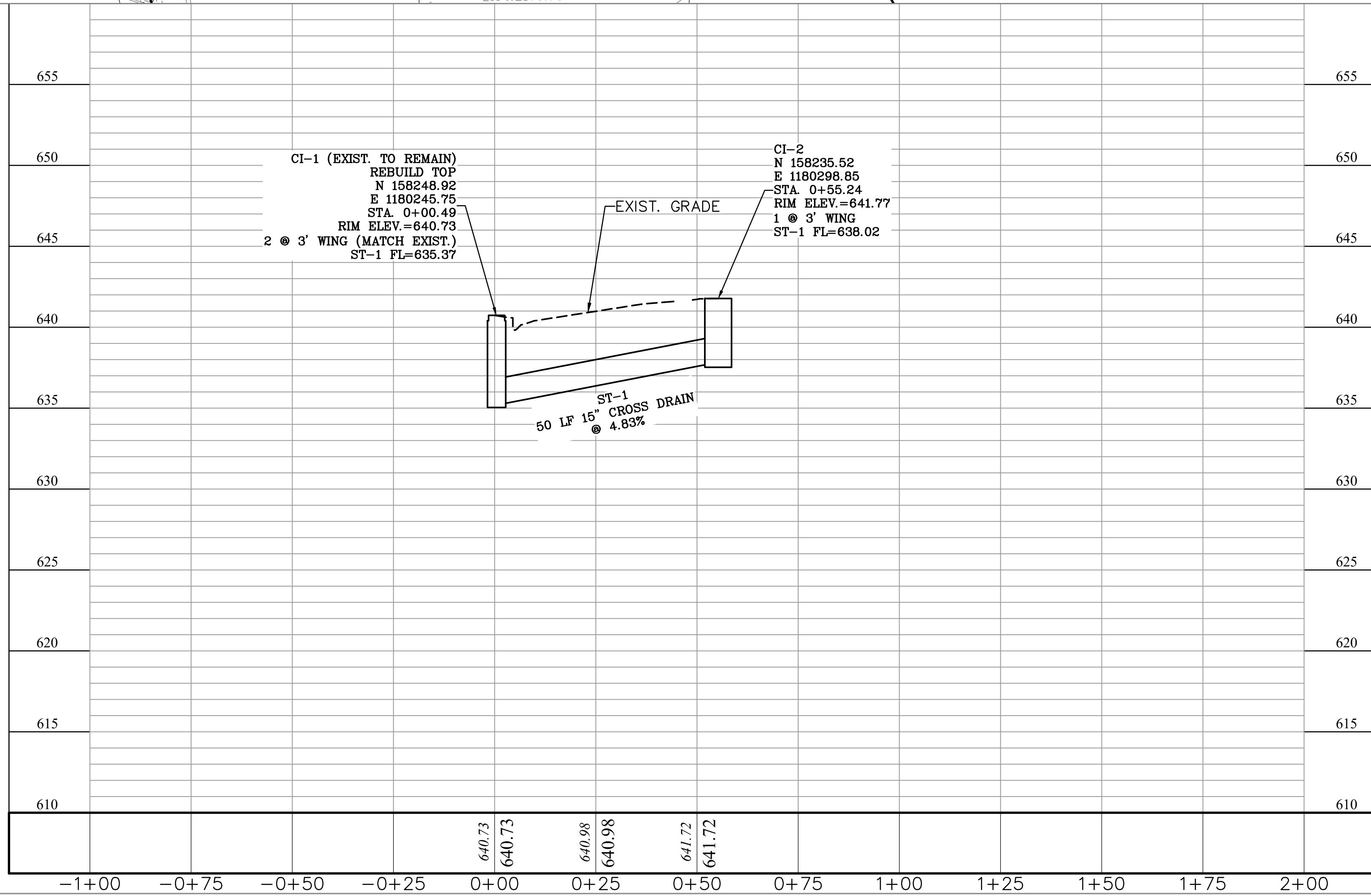
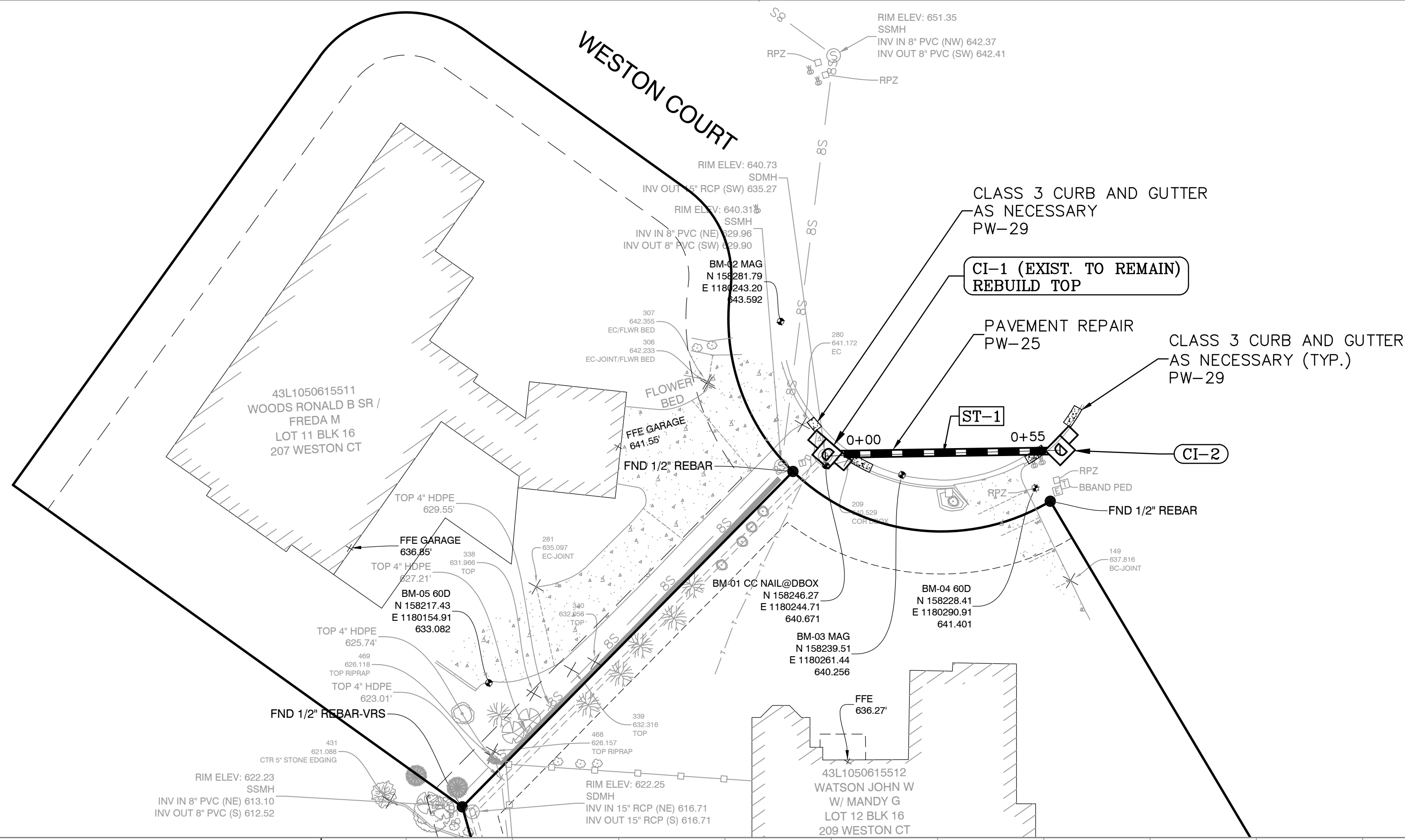
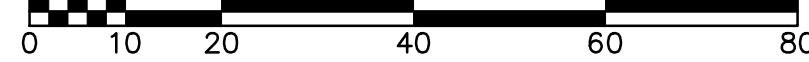


DRAWN BY
KMH
DESIGNED
KMH
CHECKED
FJS
DATE
2-28-2024
SCALE
1"=20'
PROJECT NO.
05-22-DR-007
SHEET NO.
C3





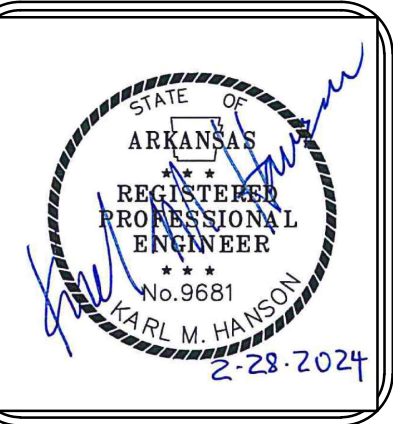
GRAPHIC SCALE



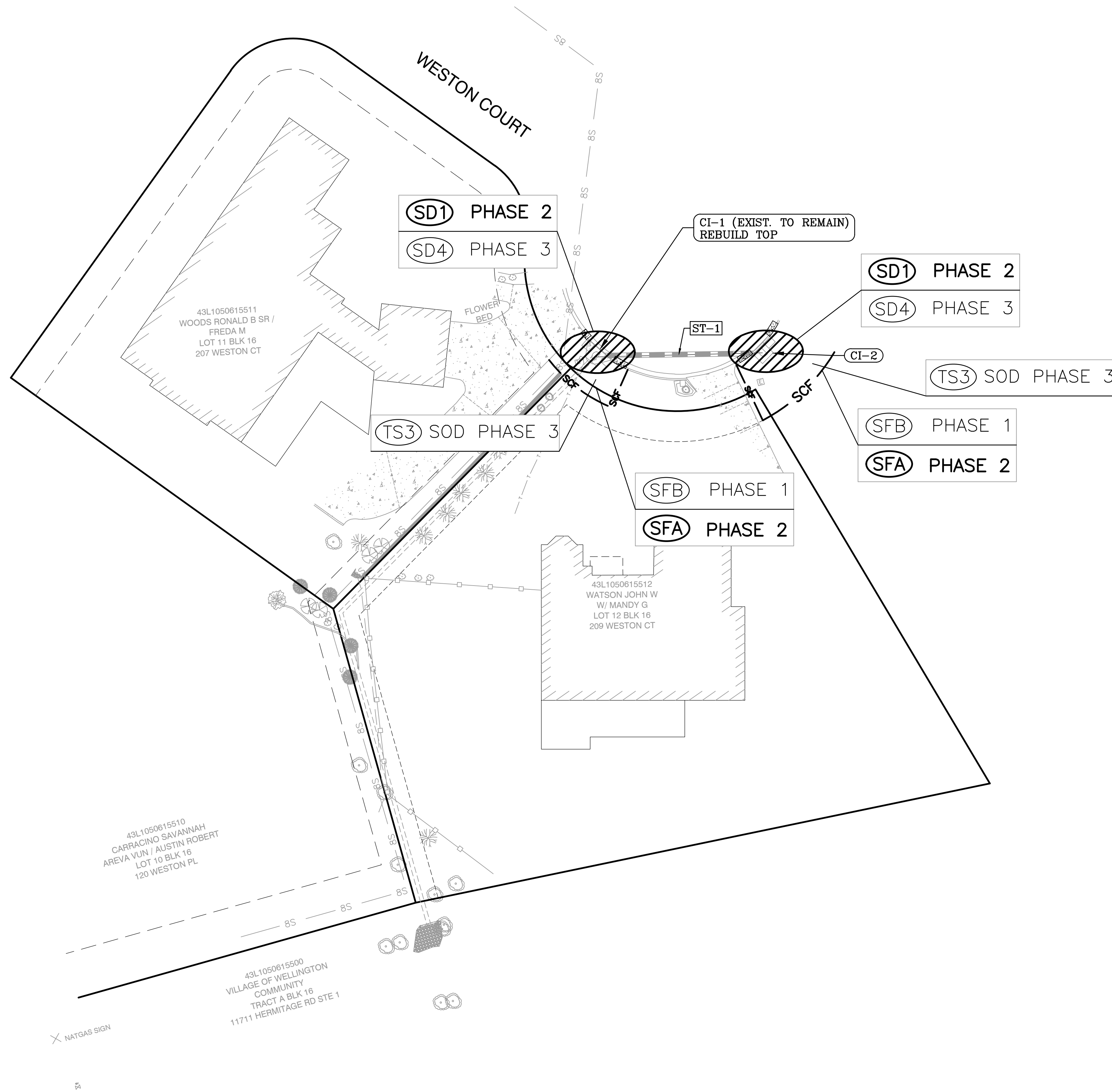
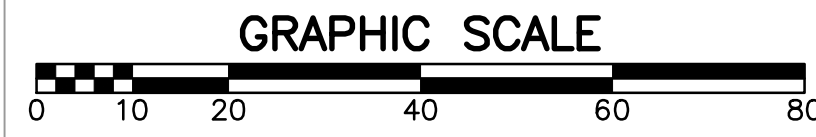
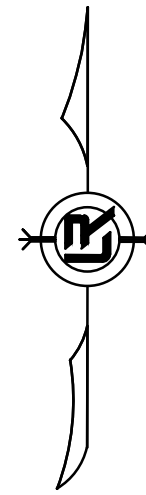
REVISIONS	DATE

WESTON 209 DRAINAGE
CITY OF LITTLE ROCK, ARKANSAS
PLAN AND PROFILE

DEPARTMENT OF PUBLIC WORKS
CIVIL ENGINEERING
701 W. MARKHAM
LITTLE ROCK, ARKANSAS 72201



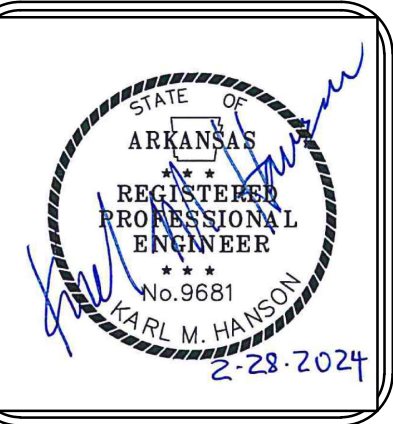
DRAWN BY
KMH
DESIGNED
KMH
CHECKED
FJS
DATE
2-28-2024
SCALE
1"=20'
PROJECT NO.
05-22-DR-007
SHEET NO.
C4



REVISIONS	DATE

WESTON 209 DRAINAGE
CITY OF LITTLE ROCK, ARKANSAS
EROSION CONTROL

DEPARTMENT OF PUBLIC WORKS
CIVIL ENGINEERING
701 W. MARKHAM
LITTLE ROCK, ARKANSAS 72201



DRAWN BY
KMH
DESIGNED
KMH
CHECKED
FJS
DATE
2-28-2024
SCALE
1"=20'
PROJECT NO.
05-22-DR-007
SHEET NO.
C5