

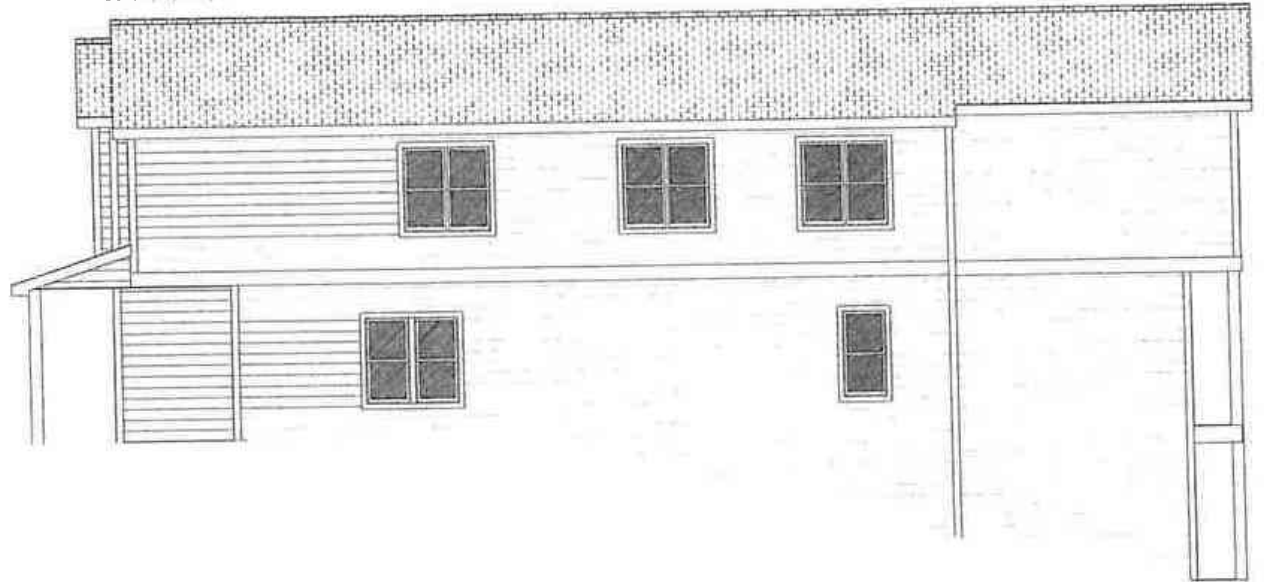
FRONT ELEVATION

SCALE: 3/16" = 1'



RIGHT SIDE ELEVATION

SCALE: 3/16" = 1'



Sketch Map City of Little Rock Planning & Development

Case No: Z-10021 Sketch 2 of 3

Name: E & Y Development LLC

Location: 117 Rice St.

Title: PD-R

