

RIGHT OF WAY SIGNS AND SYMBOLS

- SECTION CORNER
- QUARTER CORNER
- QUARTER QUARTER CORNER
- SECTION CENTER
- STATE LINE OR CITY LIMITS
- COUNTY LINE
- TOWNSHIP LINE
- QUARTER SECTION LINE
- PROPERTY LINE
- EXISTING R/W LINE
- PROPOSED R/W LINE
- EXISTING CONTROL OF ACCESS
- PROPOSED CONTROL OF ACCESS
- PROPOSED R/W & CONTROL OF ACCESS
- PROPOSED R/W DIMENSION
- EXISTING R/W DIMENSION
- PROPOSED R/W DIMENSION
- TEMPORARY & PERMANENT EASEMENT LINE
- EXISTING BRIDGE OR SEPARATION STRUCTURE
- PROPOSED BRIDGE OR SEPARATION STRUCTURE
- EXISTING CULVERT
- RAILROAD
- PAVED ROADS
- GRAVEL ROAD
- DRIVEWAY
- FENCE
- CONSTRUCTION LIMITS
- LEVEE
- TRAIL
- RESIDENTIAL & COMMERCIAL BUILDING
- HEDGE ROW
- SMALL STREAM
- LARGE STREAM
- POND OR LAKE
- ◇◇◇ TELEPHONE POLES
- POWER POLES
- TRANSMISSION LINES
- TREES
- DECIDUOUS WOODS
- EVERGREEN WOODS
- ▼ SET AHEAD R/W MONUMENT
- TEMPORARY EASEMENT POINT
- PERMANENT EASEMENT POINT
- EXISTING R/W POINT
- PROPERTY LINE POINT
- FOUND MONUMENT
- △ SURVEY CALCULATED POINT

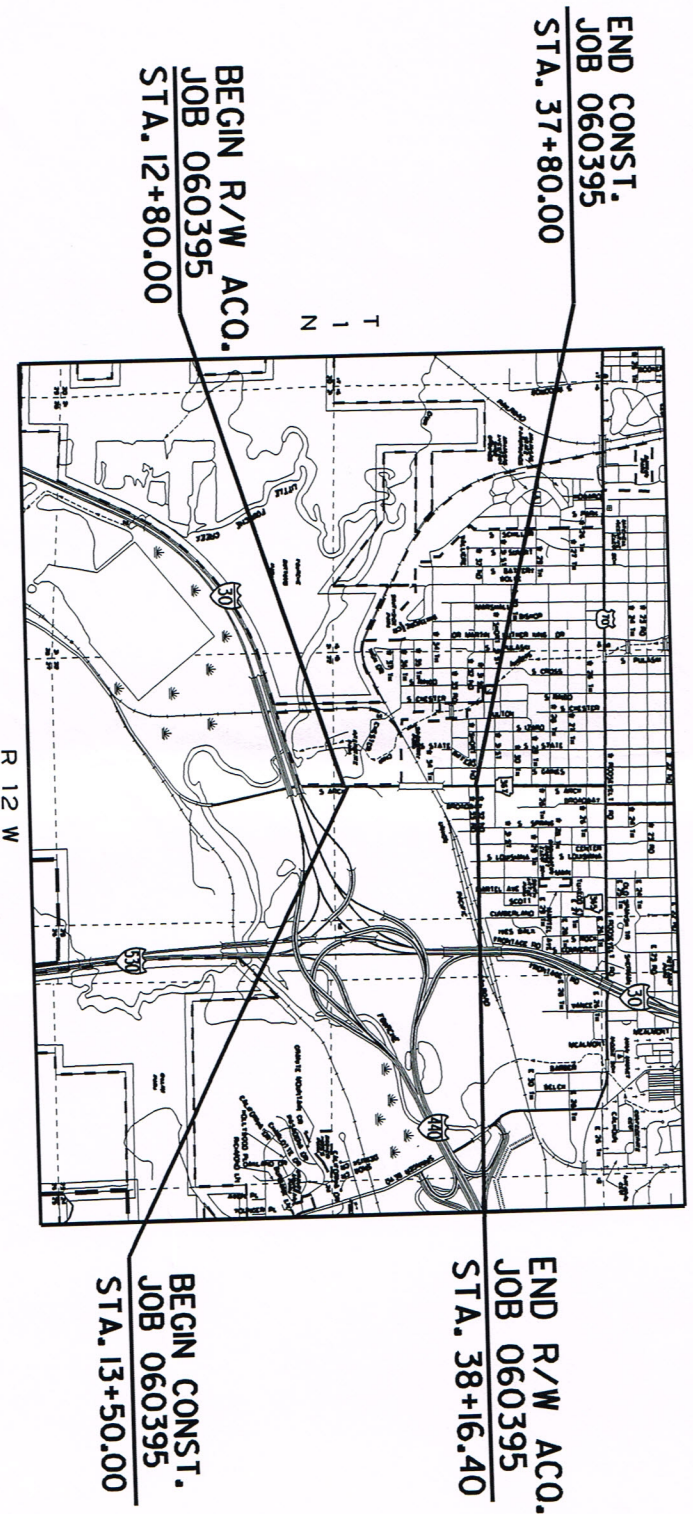
"THIS IS AN UNCONTROLLED ACCESS FACILITY"
 STATE OF ARKANSAS
 STATE HIGHWAY COMMISSION



**RIGHT OF WAY MAP
 PACIFIC RRR OVERPASS
 (ARCH ST.) (LR) (S)**

PULASKI COUNTY
 ROUTE 367 SECTION 13
 JOB 060395

LAYOUT
 NOT TO SCALE



MIDPOINT
 LAT: 34.12-53
 LONG: 092-16-50

SURVEY CONTROL COORDINATES
 Project Name: 060395
 Date: 10/02/2012
 Coordinate System: ARKANSAS STATE PLANE - SOUTH ZONE BASED ON GPS CONTROL.
 Units: U.S. SURVEY FOOT

Point Name	Northing	Easting	Elev	Feature	Description
1	2056355.1802	1227909.1774	247.98	CTL	5/8 REBAR W/2 CAP
2	2057044.1027	1227959.2951	267.41	CTL	5/8 REBAR W/2 CAP
3	2057203.4575	1227948.7546	242.05	CTL	5/8 REBAR W/2 CAP
4	2057859.3857	1228005.5719	252.37	CTL	5/8 REBAR W/2 CAP
5	2057984.6817	1227987.6013	252.61	CTL	5/8 REBAR W/2 CAP
6	2058384.3342	1228018.9846	243.34	CTL	5/8 REBAR W/2 CAP
7	2058789.9755	1228082.8923	243.02	CTL	5/8 REBAR W/2 CAP
8	2058963.9755	1228167.9350	250.34	CTL	5/8 REBAR W/2 CAP
9	2057205.2168	1227842.0306	276.22	GPS	AHTD GPS 600064
100	2062714.0917	1321121.4296	297.16	GPS	AHTD GPS 600077A
101	2062714.0917	1321121.4296	405.81	GPS	AHTD GPS 600077A
102	2070178.2724	1223009.8733	294.58	TBM	CHISELECTED SO 2 CAP TBM-901
901	2047281.5051	1225611.2848	270.70	TBM	5/8 REBAR W/2 CAP TBM-902
902	2049504.1583	1225611.2848	255.57	TBM	5/8 REBAR W/2 CAP TBM-905
903	2051722.5189	1227877.4425	247.74	TBM	5/8 REBAR W/2 CAP TBM-906
904	2055962.8483	1227877.4425	287.39	TBM	5/8 REBAR W/2 CAP TBM-907
905	2055962.8483	1227968.1419	287.39	TBM	5/8 REBAR W/2 CAP TBM-908
906	2055962.8483	1228139.8104	341.51	TBM	5/8 REBAR W/2 CAP TBM-909
907	2060379.3425	1225552.0363	301.85	TBM	5/8 REBAR W/2 CAP TBM-910
908	2060379.3425	1223132.9755	329.28	TBM	5/8 REBAR W/2 CAP TBM-911
909	2061943.3264	1222301.1866	329.79	TBM	5/8 REBAR W/2 CAP TBM-912
910	2064269.1567	1221411.0624	278.28	TBM	5/8 REBAR W/2 CAP TBM-913
911	2066192.0603	1221479.0119	286.65	TBM	5/8 REBAR W/2 CAP TBM-914
912	2068815.9356	1224323.6209	265.97	TBM	5/8 REBAR W/2 CAP TBM-915
913	2068815.9356	1224323.6209	265.26	TBM	5/8 REBAR W/2 CAP TBM-916
914	2040212.3969	1220316.3293	267.33	TBM	NGS-F 320 DISK IN STONE
9900	2044857.2962	1222251.1613	240.85	TBM	NGS-PAGIS 2023 DISK IN CONCRETE
9901	2068815.9356	1222251.1613	240.85	TBM	NGS-LITTLE ROCK FM
9903	2068815.9356	1222251.1613	240.85	TBM	NGS-LITTLE ROCK FM
9904	2071534.0111	1227252.6281	268.65	TBM	NGS MARK A 290

Note - Rebar and Cap - Standard - 5/8" Rebar with 2" Aluminum Cap stamped
 (other markings common to all caps), or as indicated in the point description of the individual points.
 ALL DISTANCES ARE GROUND. USE CAP = 1.0 FOR STAKEOUT FOR THIS PROJECT. A PROJECT CAP OF 0.9999736923 HAS BEEN USED TO COMPUTE THE ABOVE LISTED GROUND COORDINATES. THIS CAP IS INTENDED FOR USE WITHIN THE PROJECT LIMITS.
 GRID DISTANCE = GROUND DISTANCE X CAP
 GROUND COORDINATES ARE PROJECTED FROM AR. STATE PLANE GRID COORDINATES BY SCALING ALL X, Y, Z COORDINATE VALUES WITH THE INVERSE (1/CAP) OF THE COMBINED ADJUSTMENT FACTOR (CAP) ABOUT X+0, Y+0, Z+0.
 GRID COORDINATES ARE STORED UNDER FILE NAME: #060395g1.ctl
 HORIZONTAL DATUM: NAD 83 (1997) ELEVATIONS FOR POINTS 1-8, 100-102, AND 901-9904 WERE ESTABLISHED BY VERTICAL DATUM: NAVD 88 ELEVATIONS FROM NGSS BENCHMARKS.
 3-WIRE LEVEL TECHNIQUES FROM NGSS BENCHMARKS.
 POSITIONAL ACCURACY: PRIMARY CONTROL POINTS 1-91: 2.0CM, 20PPM
 HORIZONTAL-POSITIONAL ACCURACY IS THIRD ORDER, UNLESS SPECIFIED OTHERWISE AT A SPECIFIC POINT
 VERTICAL-POSITIONAL ACCURACY IS THIRD ORDER, UNLESS SPECIFIED OTHERWISE AT A SPECIFIC POINT

POSITIONAL ACCURACY:
 HORIZONTAL-POSITIONAL ACCURACY IS THIRD ORDER, UNLESS SPECIFIED OTHERWISE AT A SPECIFIC POINT
 VERTICAL-POSITIONAL ACCURACY IS THIRD ORDER, UNLESS SPECIFIED OTHERWISE AT A SPECIFIC POINT
 BASIS OF BEARING:
 ARKANSAS STATE PLANE GRID BEARINGS - 0302-SOUTH ZONE
 DETERMINED FROM GPS CONTROL POINTS: 600064 - 600064A, 600027A
 CONVERGENCE ANGLE LEFT AT PVI 4
 GRID AZIMUTH - ASTRONOMICAL AZIMUTH - CONVERGENCE ANGLE.
 PVI 4
 L1: 34-42-53.8 LG: 092-16-50.5
 GRID NORTHING: 2057805.1679 GRID EASTING: 1227973.2180
 GROUND NORTHING: 2057859.3857 GROUND EASTING: 1228005.5719

ALIGNMENT NAME: HWY 387

POINT	STATION	TYPE	NORTHING	EASTING
8000	10+00.00	POB	2056012.8748	1227917.3500
8001	14+32.72	PC	2056444.9373	1227941.2586
8002	15+14.14	PI	2056526.2284	1227945.7589
8003	15+95.38	PT	2056806.4862	1227959.4375
8004	18+20.38	PC	2056823.2870	1227987.2451
8005	19+03.47	PI	2056910.1955	1228011.2071
8006	19+86.37	PT	2056983.1690	1228015.6046
8007	31+83.27	PC	2056168.4184	1228077.8915
8008	32+45.83	PI	2056250.8577	1228082.2807
8009	33+28.20	PT	2056333.2531	1228077.1297
8010	35+53.20	PC	2056557.8181	1228083.1456
8011	36+34.36	PI	2056638.8194	1228058.1015
8012	37+15.34	PT	2056719.8720	1228062.2392
8013	39+91.80	POE	2056895.9850	1228076.3336

ALIGNMENT NAME: 3rd ST.

POINT	STATION	TYPE	NORTHING	EASTING
8020	6+11.20	POB	2056357.7040	1227688.2934
8021	10+00.00	POE	2056340.1798	1228076.6884

ALIGNMENT NAME: 34th ST.

POINT	STATION	TYPE	NORTHING	EASTING
8030	8+00.00	POB	2057988.4122	1227872.7288
8031	9+22.15	PC	2057986.2711	1227994.8636
8032	9+57.62	PI	2057985.6486	1228030.3208
8033	9+91.81	PT	2058010.8878	1228052.3379
8034	11+00.00	POE	2058057.4160	1228160.0135

ALIGNMENT NAME: DRIVEWAY 1

POINT	STATION	TYPE	NORTHING	EASTING
8040	10+00.00	POB	2056907.1088	1228008.4384
8041	10+59.88	PC	2056900.3422	1228067.9133
8042	11+31.08	PI	2056932.2941	1228138.6742
8043	11+83.78	PT	2056956.3830	1228169.7305
8044	12+00.00	POE	2056970.9786	1228176.8033

UNION PACIFIC RR OVERPASS
 (ARCH ST.) (LR) (S)
 ARKANSAS STATE HIGHWAY COMMISSION
 RIGHT OF WAY MAP
 PULASKI COUNTY
 JOB 060395
 SURVEY CONTROL SHEET

NO.	DATE	DESCRIPTION	BY	CHK'D
1	06/2013	REVISIONS		
2				
3				
4				
5				
6				
7				
8				
9				
10				

DESIGNED: JFC
 DRAWN: JFC
 CHECKED: JFC

LOT SCHEDULE

TRACT	BLOCK	LOT	SO. FT.	ACQ.	RESIDUAL
TWIN CEN ADDITION					
7X	2	11	6855	5081	1774
7X	2	12	6850	3501	3349
7X	2	13	6850	3333	3517
7X	2	14	6850	3164	3686
10X	2	PART OF 15	6350	1423	4927
10X	2	PART OF 16	6350	1558	4792
10X	2	PART OF 17	6850	3094	3756
12X	2	18	6850	2489	4361
12X	2	PART OF 20	2298	361	1937
18	2	PART OF 21	2284	292	1992
18	2	PART OF 21	4567	382	4185
19	2	PART OF 21	6850	346	6504
19	2	22	6850	346	6340
4	5	1	6340	-	17623
4	5	2	17623	-	17623
4	5	3	17623	-	17623
4	5	4	17623	-	17623
4	5	5	17623	-	17623
4	5	6	17623	-	17623
4	5	7	17623	-	17623
4	5	8	17623	-	17623
4	5	9	17623	-	17623
4	5	10	17623	-	17623
4	5	11	17623	2753	14870
4	5	12	17623	-	17623
4	5	13	17623	-	17623

CALLAWAY ADDITION					
6	5	4	6865	818	6047
6	5	5	6859	59	6800
6	5	6	6854	-	6854
6	5	2	6343	243	6100
26	1	PART OF 3	5839	73	5766
26	1	PART OF 3	1106	-	1106
29	1	PART OF 3	6932	-	6932
29	1	4	6850	1911	4939
15	1	7	6863	-	6863
15	1	8	6875	-	6875
15	1	9	6875	-	6875
15	1	10	6887	-	6887

EBENDALE ADDITION					
21X	9	PART OF 10	1450	-	1450
23	9	PART OF 10	1450	-	1450
21X	9	PART OF 11	1450	-	1450
23	9	PART OF 11	1450	-	1450
21X	9	PART OF 12	1450	811	639
23	9	PART OF 12	1450	671	779

UNION PACIFIC RR OVERPASS

(ARCH ST.) (LR) (S)

ARKANSAS STATE HIGHWAY COMMISSION

RIGHT OF WAY MAP

PULASKI COUNTY

JOB 060395 SHEET 3 OF 7

NO.	DATE	REVISIONS	DESCRIPTION	BY	CR'D	TRACT	OWNERSHIP	TITLE	PARCEL AREA IN ACRES	TO ACQUIRE	PARCEL AREA IN SQ. FT.	TO ACQUIRE	REMARKS	PAGE
12	10/6/14	Rev. Owner's RD Tr. 3	RA	RA	RA	8	ZEOLA DIXON	32	0.63	0.35	27,405	15,079		6
11	9/2/14	Rev. ATA Tr. 3 Added TCE 3E-2	RA	RA	RA	7X	CITY OF LITTLE ROCK	29	0.47	0.02	20,578	877		6
10	8/11/14	Deleted Tr. 30	RA	RA	RA	6	CITY OF LITTLE ROCK	34	UNABLE	-	UNABLE	-		5.6
9	6/30/14	Rev. ATA Tr. 3 TX & 10X	RA	RA	RA	5E	CHICAGO ROCK ISLAND & PACIFIC RR	36	5.00	0.47	217,816	20,376	TCE 4E-1-008 Ac.± or 3,429 Sq. Ft.±	5
8	2/28/14	TCE 30E-1	RA	RA	RA	4	CITY OF LITTLE ROCK	37 REV.	1916	0.72	834,585	314,38	TCE 3E-1-018 Ac.± or 7,905 Sq. Ft.± TCE 3E-2-004 Ac.± or 1,566 Sq. Ft.± TCE 3E-3-001 Ac.± or 361 Sq. Ft.±	5
7	2/27/14	Added Tr. 18R	RA	RA	RA	3	FRANK H. COX, JR. / INT. FRANK C. MCKINNEY 1/4	38	19.58	0.27	853,012	115,48		5
6	1/17/14	Added Tr. 12XR	RA	RA	RA	3	FRANK H. COX, JR. / INT. FRANK C. MCKINNEY 1/4	38	19.58	0.27	853,012	115,48		5
5	1/14/14	Added TCE Tr. 3 BE-1 & 19E-1	RA	RA	RA	3	FRANK H. COX, JR. / INT. FRANK C. MCKINNEY 1/4	38	19.58	0.27	853,012	115,48		5
4	12/20/13	Added Tr. 5 IIR & 16XR	RA	RA	RA	2	TRAYLOR CHILDRENS TRUST	35	32.33	0.13	1,408,251	5,567		5
3	12/11/13	Added Tr. 13R	RA	RA	RA	2	TRAYLOR CHILDRENS TRUST	35	32.33	0.13	1,408,251	5,567		5
2	11/11/13	Added Tr. 13R	RA	RA	RA	2	TRAYLOR CHILDRENS TRUST	35	32.33	0.13	1,408,251	5,567		5
1	9/16/13	Rev. Owner's RD Tr. 23 Rev. TP & Res. Tr. 21X	RA	RA	RA	1	CITY OF LITTLE ROCK	35	32.33	0.13	1,408,251	5,567		5
19			RA	RA	RA	19	HARRY BASSETT, SR. & PAULETTE BASSETT	22	0.11	0.02	4,582	653		7
20			RA	RA	RA	20	WILLIE & GEORGIE MARIE TAYLOR H/W	18	0.15	0.01	6,651	544		7
21			RA	RA	RA	21	MARY ALICE GIVENS	11	0.10	0.02	4,350	811		7
22			RA	RA	RA	22	LAWRENCE & RICHMOND JONES H/W	16	0.15	0.01	6,651	599		7
23			RA	RA	RA	23	ELIHU STEWART	9 Rev.	0.10	0.02	4,350	671		7
24			RA	RA	RA	24	CITY OF LITTLE ROCK	14	0.16	0.02	6,815	660		7
25			RA	RA	RA	25	DALEE INVESTMENT GROUP, INC	40	0.08	0.01	3,450	69		7
26			RA	RA	RA	26	THE ST. PAUL TEMPLE AFRICAN METHODIST EPISCOPAL ZION CHURCH	15	0.28	0.01	12,182	316		7
27			RA	RA	RA	27	HERMAN TACKER	13	0.16	0.01	6,964	465		7
28E			RA	RA	RA	28E	GREATER TRINITY CHURCH OF GOD IN CHRIST OF LITTLE ROCK	19	-	-	-	-	TCE 28E-1-003 Ac.± or 1,293 Sq. Ft.±	7
29E			RA	RA	RA	29E	JAMES L. CLARK	17	-	-	-	-	TCE 29E-1-003 Ac.± or 1,489 Sq. Ft.±	7
30			RA	RA	RA	30	DELETED	-	-	-	-	-	7	
13R			RA	RA	RA	13R	RONALD & VALERIE SETTLERS H/W	21	0.09	0.09	3,976	3,976		7
11XR			RA	RA	RA	11XR	CHARLES & DEBRA SWINSON H/W	23	0.07	0.07	3,117	3,117		7
16XR			RA	RA	RA	16XR	WILLIE BELL WILLIAMS	26	0.12	0.12	4,966	4,966		7
12XR			RA	RA	RA	12XR	CHRIS ABEAWEER REVOCABLE TRUST	28 REV.	0.18	0.18	8,117	8,117		7
18R			RA	RA	RA	18R	WILLIAM C. LLOYD	22	0.09	0.09	3,929	3,929		7

W/16 Cor.
Sec. 15, 22

E/16 Cor.
Sec. 15, 22

NO.	DATE	DESCRIPTION	BY	RA	RA
1	9/22/14	Rev. AT A & Res. Tr. 3, Added TCE	RA	RA	
		3E-2, 3E-3 & 4E-1			

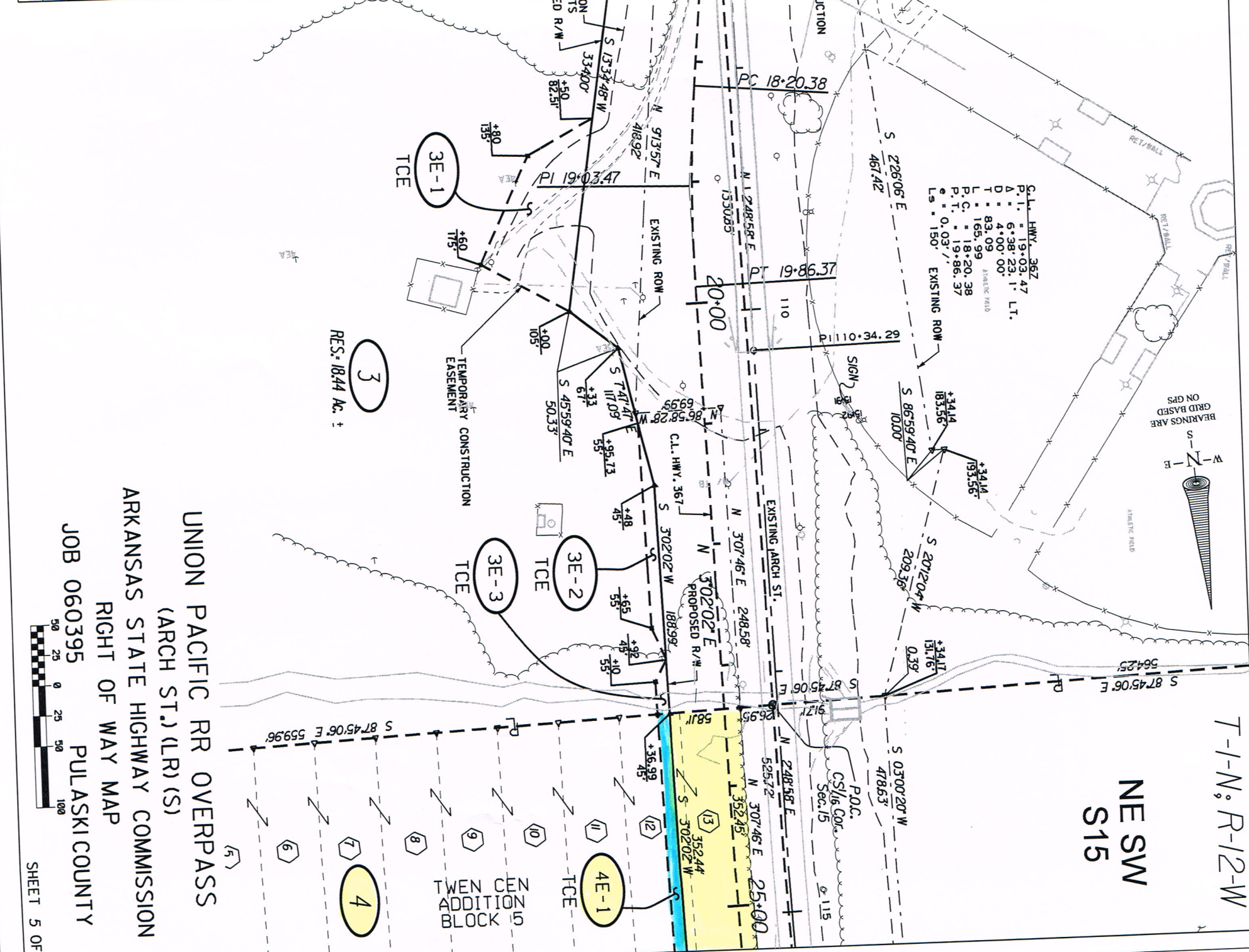
DESIGNED	DWY	REVIEWED	JFC

JOB NO.	HWY.	AUTHORITY	BOOK	PAGE	DATE
	367 (ARCH STJ)	STATE HIGHWAY AFFIDAVIT			5/6/2013
6236	367 (ARCH STJ)	ROW MAP & COURT ORDER	52	419	5/13/1940
	367 (ARCH STJ)	TWEN GEN ADDITION	76	474	2/25/1904
	367 (ARCH STJ)	CALLAWAY ADDITION	1	95	12/3/1908
	367 (ARCH STJ)	DEDICATION DEED	96	79892	11/19/1996
	367 (ARCH STJ)	THE CHANTANOGA ADDITION	76	381	8/1903
	367 (ARCH STJ)	EBENDALE ADDITION	76	479	1/9/1904

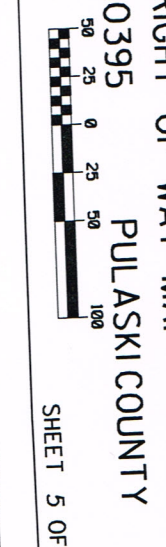
EXISTING RIGHT OF WAY AUTHORITY
THE EXISTING R/W SHOWN IS WITHIN THE LIMITS OF THE R/W COVERED BY THE FOLLOWING:

RES. 1931 Ac. ±

RES. 1844 Ac. ±



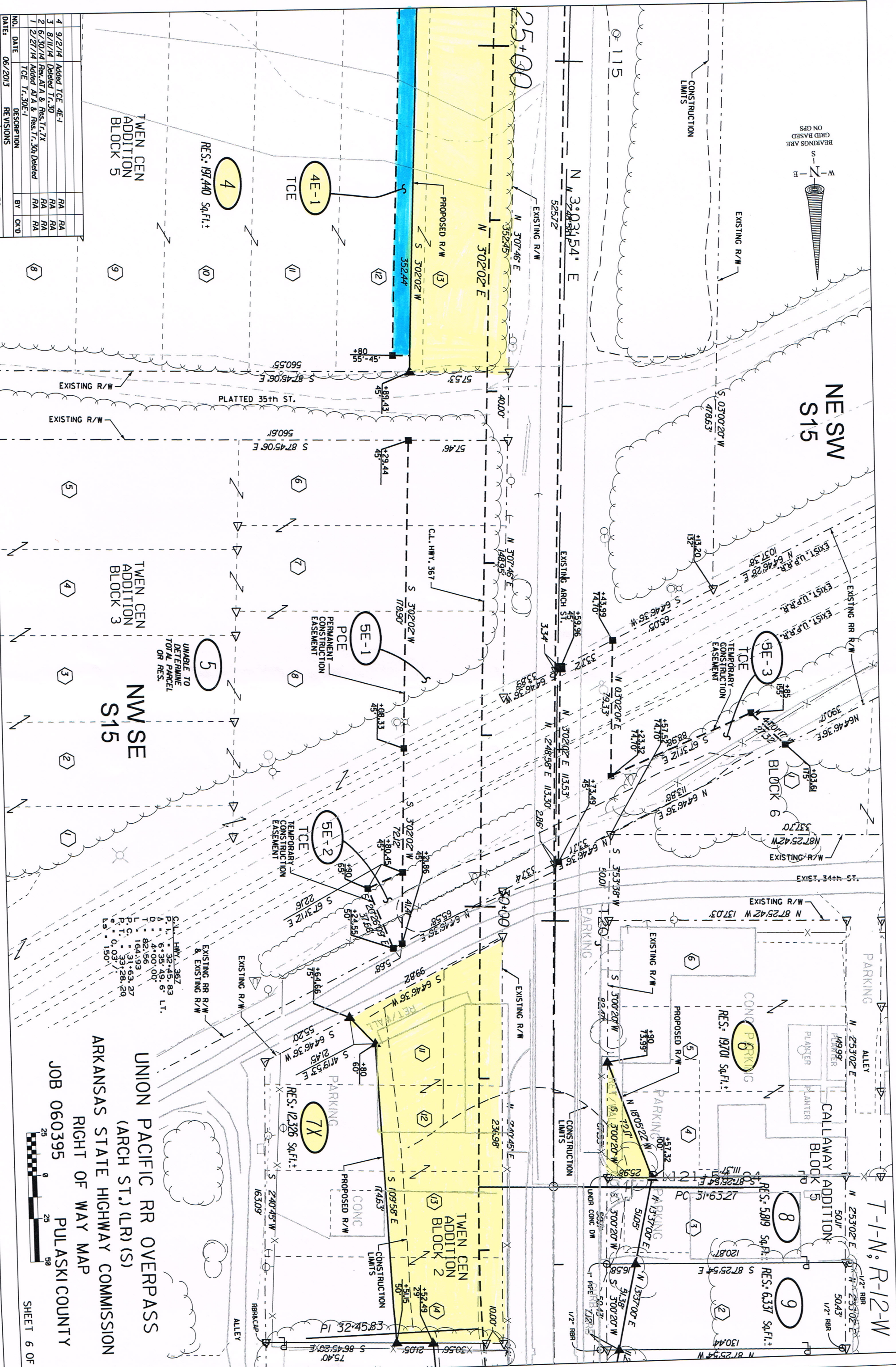
UNION PACIFIC RR OVERPASS
(ARCH ST.) (LR) (S)
ARKANSAS STATE HIGHWAY COMMISSION
RIGHT OF WAY MAP
JOB 060395
PULASKI COUNTY





NE SW
S15

T-1-N, R-12-W



NO.	DATE	DESCRIPTION	BY	CHK'D
4	9/2/14	Added TCE 4E-1	RA	RA
3	8/11/14	Deleted T.C. 30	RA	RA
2	6/30/14	Rev. A1A & Res. T.C. 7X	RA	RA
1	2/27/14	Added A1A & Res. T.C. 30 Deleted TCE T.C. 30E-1	RA	RA

NO.	DATE	DESCRIPTION	BY	CHK'D
1	06/20/13	TCE T.C. 30E-1	RA	RA

DESIGNED BY: DMY
REVIEWED BY: JFC

TWEN CEN ADDITION BLOCK 5

TWEN CEN ADDITION BLOCK 3

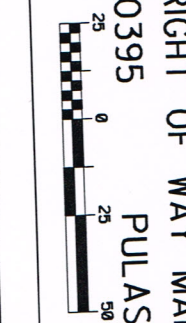
NW SE S15

UNABLE TO DETERMINE TOTAL PARCEL OR RES.

RES: 197,440 Sq. Ft. ±

RES: 19,701 Sq. Ft. ±
RES: 5,819 Sq. Ft. ±
RES: 6,337 Sq. Ft. ±
RES: 12,326 Sq. Ft. ±

UNION PACIFIC RR OVERPASS
(ARCH ST.) (LR) (S)
ARKANSAS STATE HIGHWAY COMMISSION
RIGHT OF WAY MAP
JOB 060395
PULASKI COUNTY
SHEET 6 OF 7



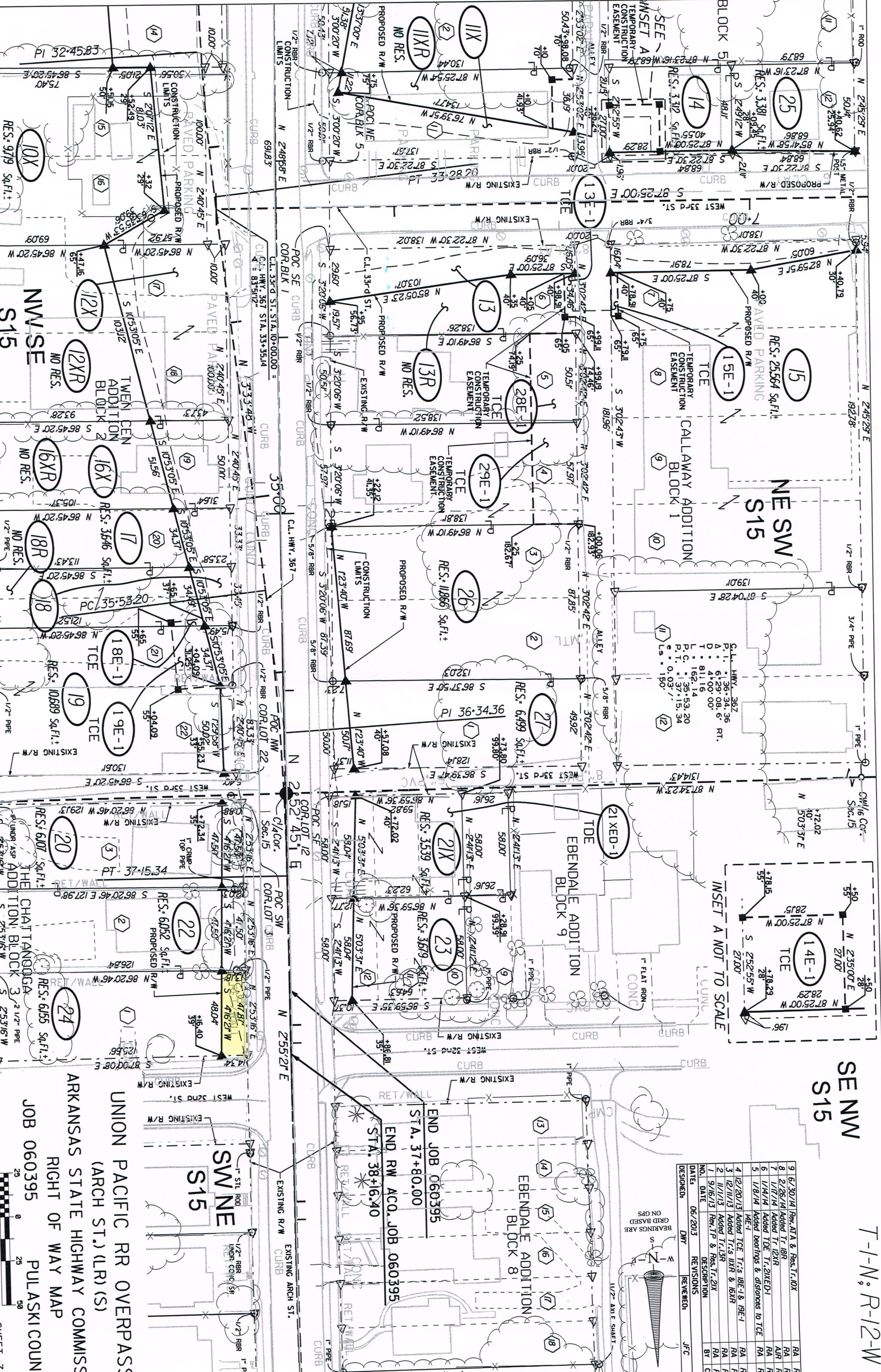
SE NW
S15

NE SW
S15

INSET A NOT TO SCALE

NO.	DATE	REVISIONS	BY	CHK'D
1	9/16/13	Rev. TP & Res. Tr. 21X	RA	RA
2	11/11/13	Added Tr. 13R	RA	RA
3	12/11/13	Added Tr. 13R & 16XR	RA	RA
4	12/20/13	Added TCE Tr. 18E-1 & 19E-1	RA	RA
5	1/8/14	Added bearings & distances to TCE	RA	RA
6	1/14/14	Added TDE Tr. 21XED-1	RA	RA
7	1/17/14	Added Tr. 12XR	RA	RA
8	2/26/14	Added Tr. 18R	RA	RA
9	6/30/14	Rev. ATA & Res. Tr. 10X	RA	RA

DESIGNED: DMY REVISIONS: JFC



UNION PACIFIC RR OVERPASS
(ARCH ST.) (LR) (S)
ARKANSAS STATE HIGHWAY COMMISSION
RIGHT OF WAY MAP
JOB 060395
PULASKI COUNTY