

2021-2025 City of Little Rock Consolidated Plan and Analysis of Impediments

Welcome to the
Public Input Meeting!



Why Prepare a Consolidated Plan?

In exchange for receiving HUD funds, recipients must prepare four things:

1. A Five-Year Consolidated Plan
2. Annual Action Plan
3. Performance and Evaluation Report
4. Analysis of Impediments to Fair Housing Choice



Purpose of the Five-Year Consolidated Plan

- Help us identify housing and community development needs, priorities and strategies
- Guide for City to prioritize how federal funds will be allocated to address these needs and activities over five years
- Develop Annual Action Plan for Year 1



Purpose of this Focus Group

- Review preliminary data
- Get your input and perspective on community needs
- Take the Surveys!



Entitlement Resources (2021)

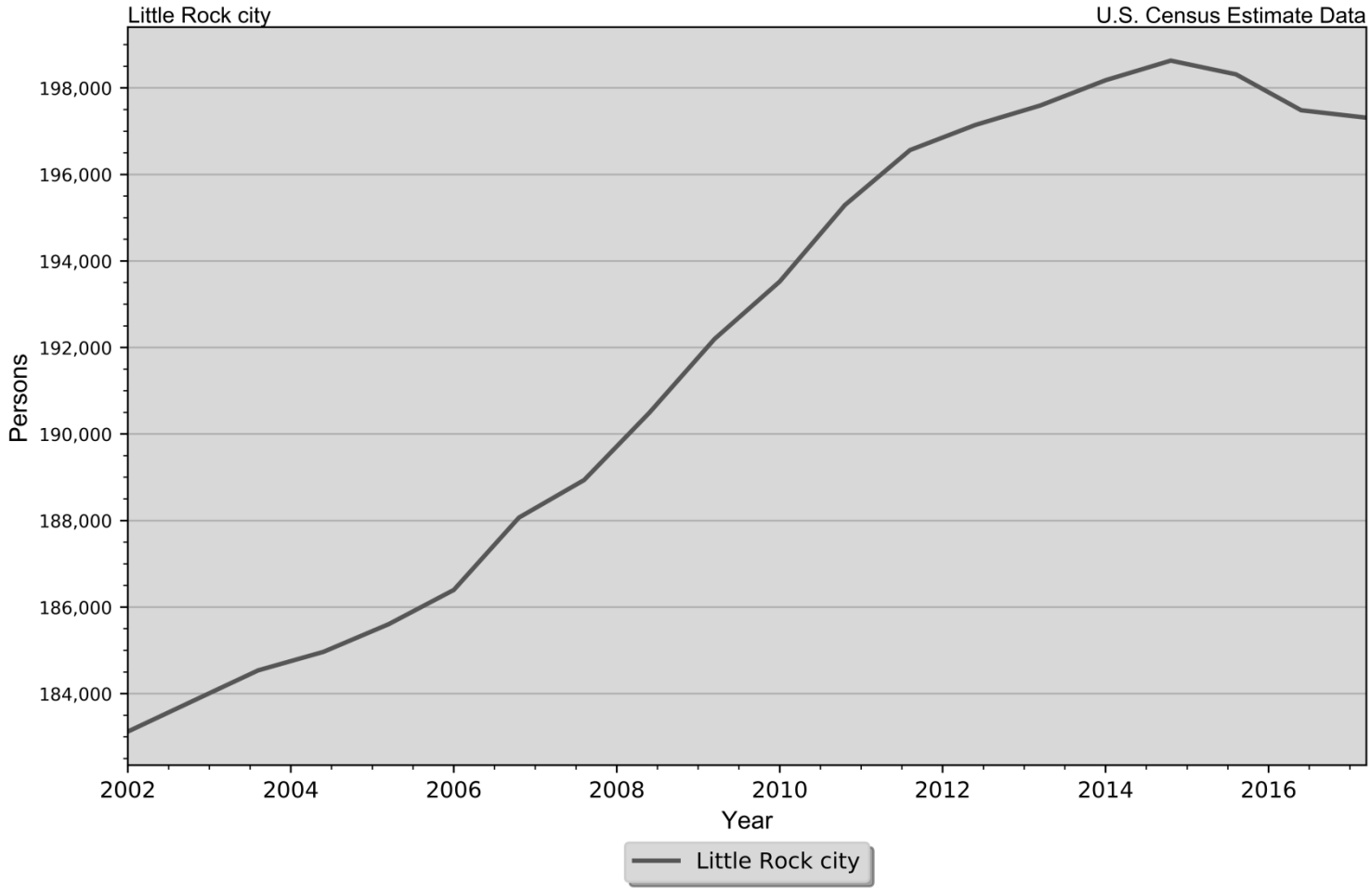
CDBG: \$1,531,059

HOME: \$738,126

HOPWA: \$626,624



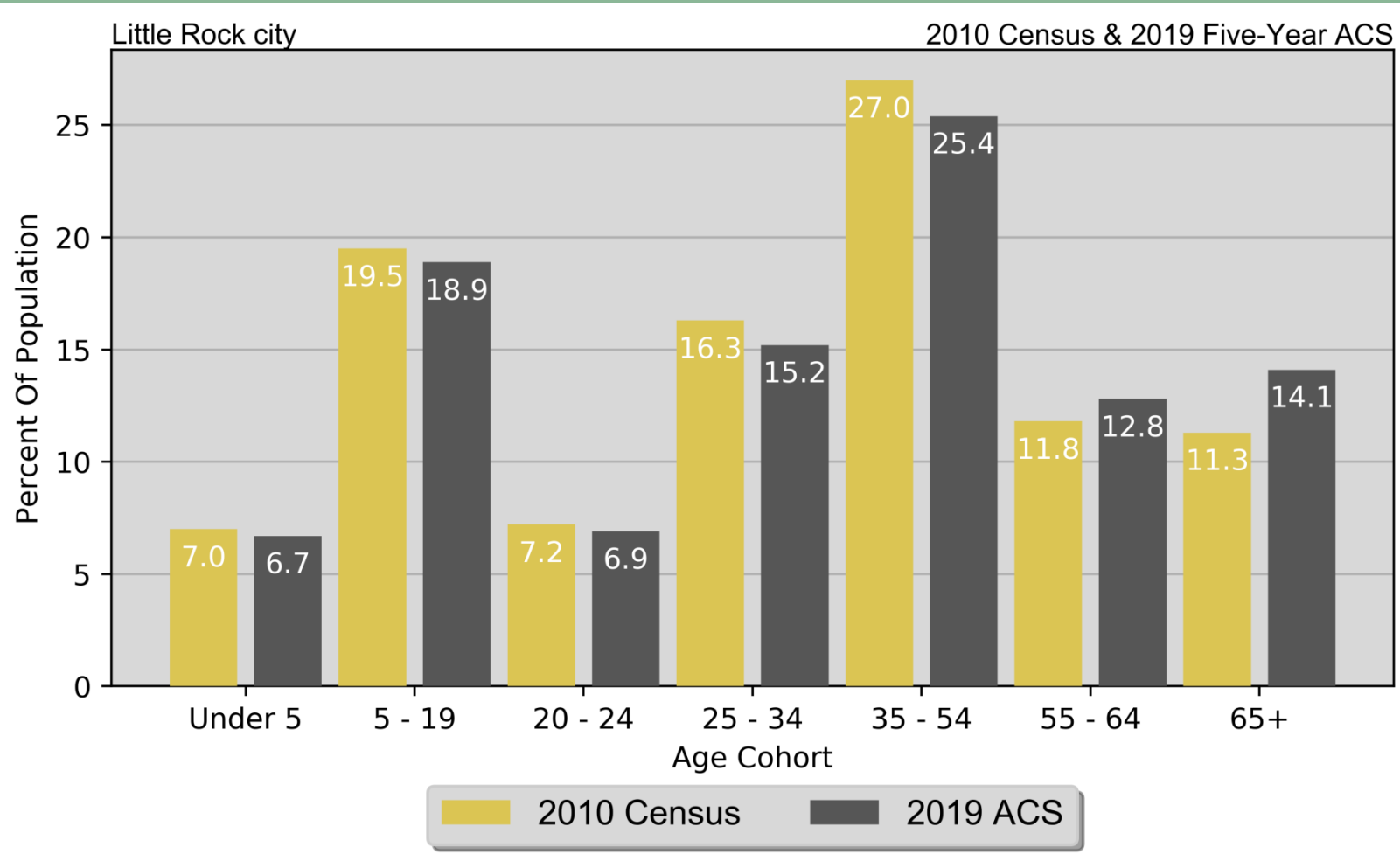
Demographics



Growing Population



Demographics



Aging Population

What Implications does that have on services and housing needs?



Demographics

Population by Race and Ethnicity
Little Rock
2010 Census & 2019 Five-Year ACS

Race	2010 Census		2019 Five-Year ACS	
	Population	% of Total	Population	% of Total
White	94,665	48.9%	99,550	50.3%
African American	81,889	42.3%	83,216	42.0%
American Indian / Alaskan Native	686	0.4%	612	0.3%
Asian	5,131	2.7%	6,530	3.3%
Native Hawaiian/ Pacific Islander	153	0.1%	101	0.1%
Other	7,626	3.9%	3,486	1.8%
Two or More Races	3,374	1.7%	4,463	2.3%
Total	193,524	100.0%	197,958	100.0%
Non-Hispanic	180,448	93.2%	183,255	92.6%
Hispanic	13,076	6.8%	14,703	7.4%

Not much change in racial and ethnic makeup



Demographics

Disability by Age
Little Rock
2019 Five-Year ACS Data

Age	Male		Female		Total	
	Disabled Population	Disability Rate	Disabled Population	Disability Rate	Disabled Population	Disability Rate
Under 5	53	0.8%	28	0.4%	81	0.6%
5 to 17	1,931	11.3%	684	4.3%	2,615	8.0%
18 to 34	1,541	6.5%	1,458	6.0%	2,999	6.3%
35 to 64	4,997	14.2%	6,082	15.2%	11,079	14.8%
65 to 74	2,025	28.3%	2,157	23.5%	4,182	25.6%
75 or Older	2,034	47.5%	3,314	52.9%	5,348	50.7%
Total	12,581	13.4%	13,723	13.4%	26,304	13.4%

Disability Rate

Over half of people over 75 have a disability



Homelessness

Homeless Count					
Little Rock / Central Arkansas CoC					
2015-2019 PIT Count					
Year	2015	2016	2017	2018	2019
Sheltered	491	469	456	531	493
Unsheltered	339	339	550	550	573
Total	830	808	1,006	1,081	1,066

Limitations in PIT
count



Economics

Households by Income
Little Rock
2010 & 2019 Five-Year ACS Data

Income	2010 Five-Year ACS		2019 Five-Year ACS	
	Households	% of Total	Households	% of Total
Less than \$15,000	11,852	14.9%	10,401	12.7%
\$15,000 to \$19,999	4,997	6.3%	4,136	5.0%
\$20,000 to \$24,999	4,567	5.7%	4,901	6.0%
\$25,000 to \$34,999	9,839	12.4%	8,512	10.4%
\$35,000 to \$49,999	12,825	16.1%	12,053	14.7%
\$50,000 to \$74,999	13,202	16.6%	13,547	16.5%
\$75,000 to \$99,999	8,149	10.3%	8,555	10.4%
\$100,000 or More	14,058	17.7%	19,882	24.3%
Total	79,489	100.0%	81,987	100.0%

Incomes are Rising

Households making at least \$100k a year increasing

But...



Economics

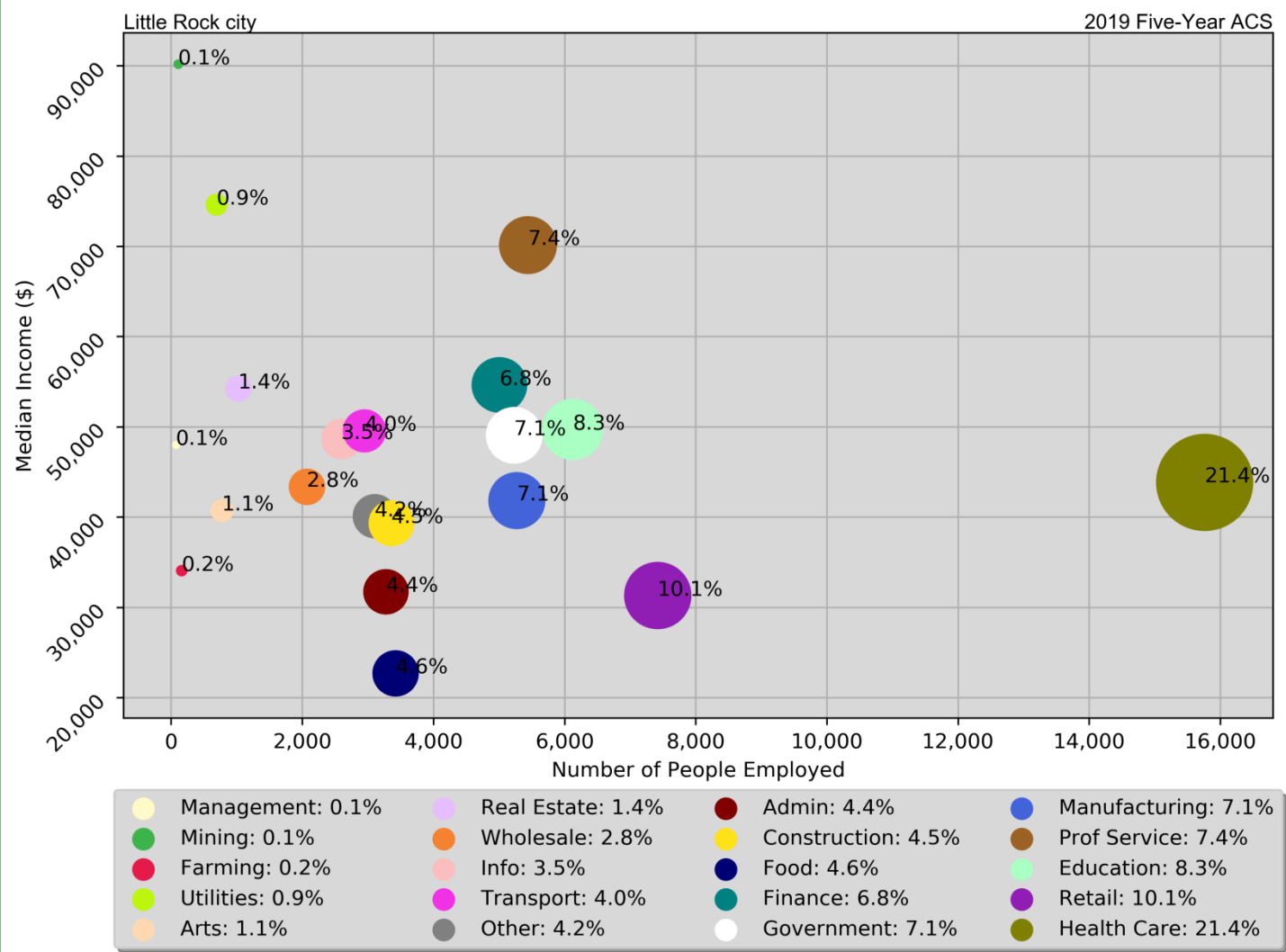
Poverty by Age Little Rock 2000 Census SF3 & 2019 Five-Year ACS Data				
Age	2000 Census		2019 Five-Year ACS	
	Persons in Poverty	% of Total	Persons in Poverty	% of Total
Under 6	3,537	13.8%	3,884	24.5%
6 to 17	5,994	23.4%	6,962	23.4%
18 to 64	14,237	55.6%	18,623	15.2%
65 or Older	1,853	7.2%	2,939	10.9%
Total	25,621	100.0%	32,408	100.0%
Poverty Rate	14.3%	.	16.6%	.

Poverty is increasing



Economics

Employment and Median Earnings by Industry Little Rock 2018 Five-Year ACS Data

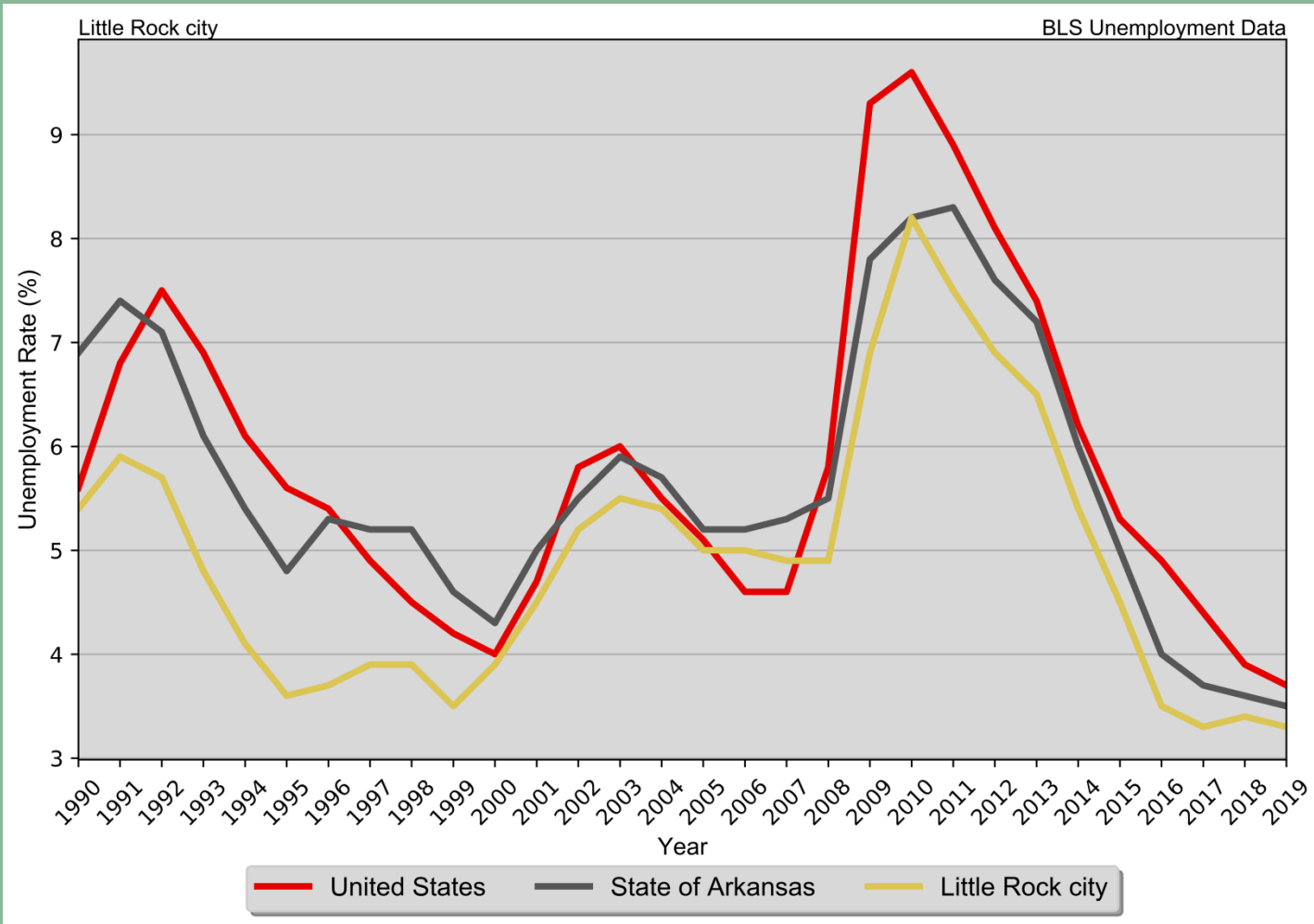


Majority of Workers are in moderately paid industries



Economics

Annual Unemployment Rate
Little Rock
1990 – 2019 BLS Data



Unemployment Falling

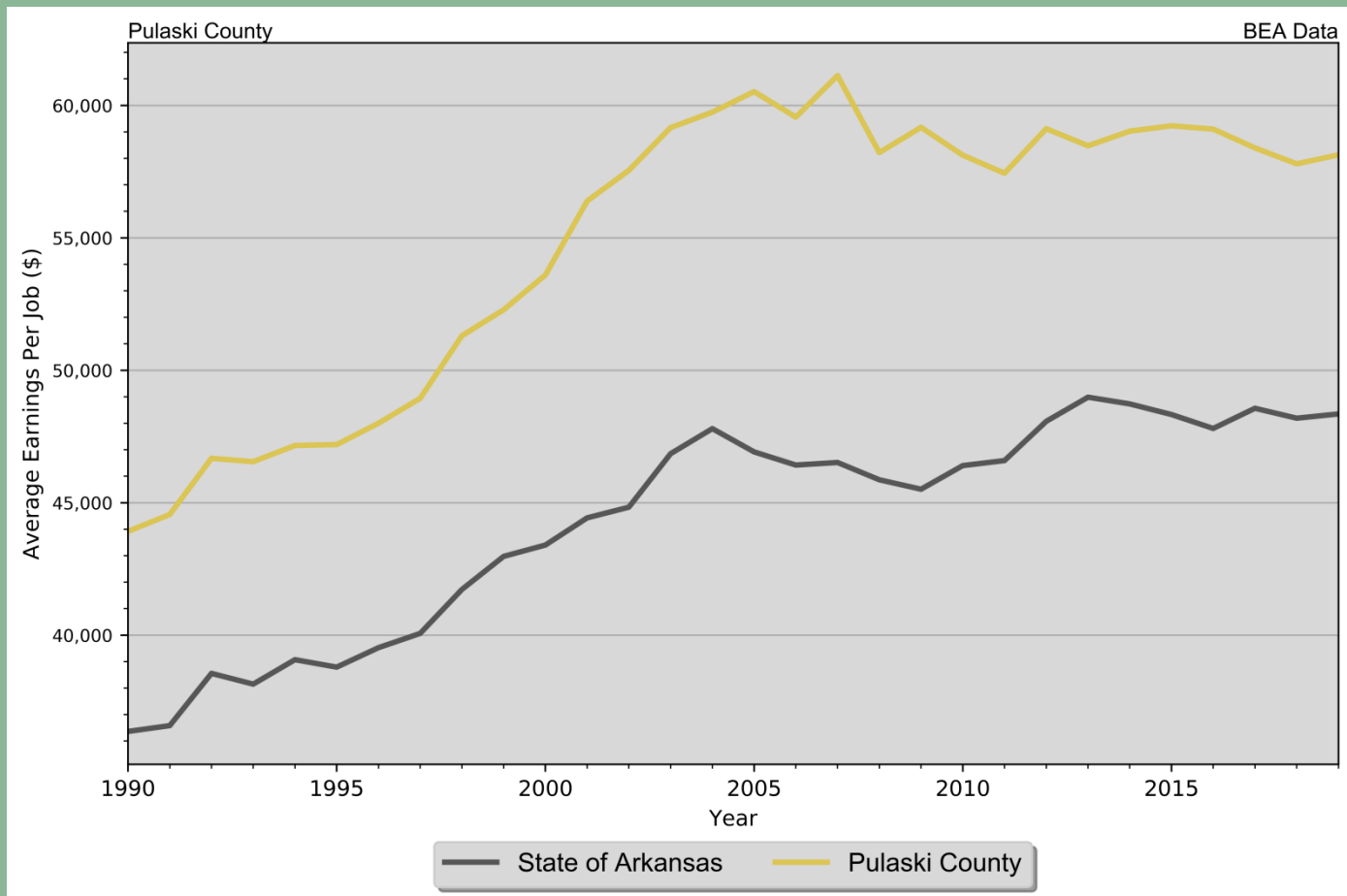
City of Little Rock staying below State and National trends

Impacts of COVID-19



Economics

Regional Trends in Real Average Earnings per Job
Pulaski County



Pulaski County
Earnings higher than
State trends



Housing

Housing Units by Type
Little Rock
2010 & 2019 Five-Year ACS Data

Unit Type	2010 Five-Year ACS		2019 Five-Year ACS	
	Units	% of Total	Units	% of Total
Single-Family	59,372	65.9%	61,792	64.1%
Duplex	2,404	2.7%	2,570	2.7%
Tri- or Four-Plex	3,814	4.2%	3,776	3.9%
Apartment	22,278	24.7%	26,627	27.6%
Mobile Home	2,218	2.5%	1,540	1.6%
Boat, RV, Van, Etc.	10	0%	34	0%
Total	90,096	100.0%	96,339	100.0%

Types of Housing Not
Changing Much

But an increase in
apartments



Housing

Housing Units by Tenure
Little Rock
2010 Census & 2019 Five-Year ACS Data

Tenure	2010 Census		2019 Five-Year ACS	
	Units	% of Total	Units	% of Total
Occupied Housing Units	82,018	89.8%	81,987	85.1%
Owner-Occupied	46,078	56.2%	45,355	55.3%
Renter-Occupied	35,940	43.8%	36,632	44.7%
Vacant Housing Units	9,270	10.2%	14,352	14.9%
Total Housing Units	91,288	100.0%	96,339	100.0%

Owner-occupied Units
Maintaining

Vacant Units Increasing



Housing

Households by Year Home Built

Little Rock

2010 & 2019 Five-Year ACS Data

Year Built	2010 Five-Year ACS		2019 Five-Year ACS	
	Households	% of Total	Households	% of Total
1939 or Earlier	6,312	7.9%	5,625	6.9%
1940 to 1949	4,045	5.1%	3,818	4.7%
1950 to 1959	8,490	10.7%	7,967	9.7%
1960 to 1969	12,552	15.8%	12,195	14.9%
1970 to 1979	18,029	22.7%	16,095	19.6%
1980 to 1989	13,704	17.2%	11,693	14.3%
1990 to 1999	8,411	10.6%	9,630	11.7%
2000 to 2009	7,946	10.0%	9,776	11.9%
2010 or Later	.	.	5,188	6.3%
Total	79,489	100.0%	81,987	100.0%

Majority of Units build
between 1960 and
1990



Housing

Disposition of Vacant Housing Units
Little Rock
2010 Census & 2019 Five-Year ACS Data

Disposition	2010 Census		2019 Five-Year ACS	
	Units	% of Total	Units	% of Total
For Rent	4,475	48.3%	6,024	42.0%
For Sale	1,279	13.8%	1,276	8.9%
Rented Not Occupied	147	1.6%	475	3.3%
Sold Not Occupied	252	2.7%	299	2.1%
For Seasonal, Recreational, or Occasional Use	533	5.7%	891	6.2%
For Migrant Workers	3	0%	0	0%
Other Vacant	2,581	27.8%	5,387	37.5%
Total	9,270	100.0%	14,352	100.0%

“Other” vacant units
are increasing



Housing Problems*

Households are considered to have housing problems if they have one of more of the four problems:

1. Housing unit lacks complete kitchen facilities;
2. Housing unit lacks complete plumbing facilities;
3. Household is overcrowded; and
4. Household is cost burdened.

*As defined by HUD

Cost Burdened
defined as spending
more than 30% of
household income on
housing



Housing Problems

Households with Incomplete Plumbing Facilities

Little Rock

2010 and 2018 Five-Year ACS Data

Households	2010 Five-Year ACS	2019 Five-Year ACS
With Complete Plumbing Facilities	79,263	81,642
Lacking Complete Plumbing Facilities	226	345
Total Households	79,489	81,987
Percent Lacking	0.3%	0.4%

Households with Incomplete Kitchen Facilities

Little Rock

2010 and 2018 Five-Year ACS Data

Households	2010 Five-Year ACS	2019 Five-Year ACS
With Complete Kitchen Facilities	79,003	81,277
Lacking Complete Kitchen Facilities	486	710
Total Households	79,489	81,987
Percent Lacking	0.6%	0.9%

Small Percentage of households lacking kitchen or plumbing facilities



Housing Problems

Overcrowding and Severe Overcrowding

Little Rock

2010 & 2019 Five-Year ACS Data

Data Source	No Overcrowding		Overcrowding		Severe Overcrowding		Total
	Households	% of Total	Households	% of Total	Households	% of Total	
Owner							
2010 Five-Year ACS	45,024	99.2%	276	0.6%	67	0.1%	45,367
2019 Five-Year ACS	44,922	99.0%	336	0.7%	97	0.2%	45,355
Renter							
2010 Five-Year ACS	32,720	95.9%	1,031	3%	371	1.1%	34,122
2019 Five-Year ACS	35,055	95.7%	1,042	2.8%	535	1.5%	36,632
Total							
2010 Five-Year ACS	77,744	97.8%	1,307	1.6%	438	0.6%	79,489
2019 Five-Year ACS	79,977	97.5%	1,378	1.7%	632	0.8%	81,987

Small Percentage of households experiencing overcrowding, but it is increasing



Housing Problems

Cost Burden and Severe Cost Burden by Tenure

Little Rock city

2010 & 2019 Five-Year ACS Data

Data Source	Less Than 30%		31%-50%		Above 50%		Not Computed		Total
	Households	% of Total	Households	% of Total	Households	% of Total	Households	% of Total	
Owner With a Mortgage									
2010 ACS	22,394	70.9%	5,857	18.5%	3,208	10.2%	139	0.4%	31,598
2019 ACS	22,228	74.7%	4,368	14.7%	2,906	9.8%	272.0	0.9%	29,774
Owner Without a Mortgage									
2010 ACS	11,903	86.4%	955	6.9%	794	5.8%	117	0.8%	13,769
2019 ACS	13,371	85.8%	897.0	5.8%	1,072	6.9%	241.0	1.5%	15,581
Renter									
2010 ACS	15,556	45.6%	8,018	23.5%	8,380	24.6%	2,168	6.4%	34,122
2019 ACS	17,922	48.9%	8,472	23.1%	8,091	22.1%	2,147	5.9%	36,632
Total									
2010 ACS	49,853	62.7%	14,830	18.7%	12,382	15.6%	2,424	3.0%	79,489
2019 ACS	53,521	65.3%	13,737	16.8%	12,069	14.7%	2,660	3.2%	81,987

31.5% of households are cost burdened

45.2% of renters are cost-burdened



Housing Problems

Percent of Total Households with Housing Problems by Income and Race

Little Rock

2012–2016 HUD CHAS Data

Income	Non-Hispanic by Race						Hispanic (Any Race)	Total
	White	African American	Asian	American Indian / Alaskan Native	Pacific Islander	Other Race		
	With Housing Problems							
\$0 to \$20,880	70.0%	76.8%	49.0%	33.3%	0%	75.4%	79.6%	74.3%
\$20,881 to \$34,800	66.7%	79.6%	87.5%	0%	0%	100.0%	62.1%	73.9%
\$34,801 to \$55,680	52.8%	43.9%	59.7%	0%	0%	53.2%	52.0%	48.2%
\$55,681 to \$69,600	22.1%	15.8%	47.5%	0%	0%	14.8%	13.4%	19.3%
Above \$69,600	7.1%	5.0%	15.1%	0%	0%	4.7%	12.4%	6.9%
Total	24.7%	43.0%	29.0%	16.7%	0%	37.0%	43.5%	33.1%

African American and Hispanic households experience higher rates of housing problems

Lower income households experience higher rates of housing problems



Community Input – Priority Needs

Funds benefiting Low-to-moderate income households and neighborhoods

- **CDBG funds: public services, infrastructure, public facilities, etc.**
- **HOME funds: rental and homeowner housing; new and rehabilitation**



Community Input – Public Services

- What groups of people at most in need?
- What types services do households need in Little Rock?



Community Input - Housing

- What are the housing needs in the community?
- What challenges are households facing in accessing housing?
- What types of affordable housing are needed?
- New or rehabilitated housing?



Community Input - Housing

- What barriers do you see for developing affordable housing?
- How can the City encourage more affordable housing?



Community Input

- Other comments?



Next Steps

- Continuing to Collect Data and Public Input
- Draft for Public Review
- Final Plan
- Adoption of final plan



Consolidated Plan

Contact:

Beverly Arbor

Community Development Planner

barbor@littlerock.gov

